

MUNBYN
ITP02 Portable
Thermal Printer



MUNBYN ITP02 Portable Thermal Printer User Manual

[Home](#) » [MUNBYN](#) » MUNBYN ITP02 Portable Thermal Printer User Manual 

Contents

- [1 MUNBYN ITP02 Portable Thermal Printer](#)
- [2 Product Information](#)
- [3 Product Usage Instructions](#)
- [4 FAQ](#)
- [5 Product Introduction](#)
- [6 Set Up The Printer](#)
- [7 Pro Tips](#)
- [8 Specifications](#)
- [9 FCC STATEMENT](#)
- [10 Tech Support](#)
- [11 Documents / Resources](#)
 - [11.1 References](#)

MUNBYN

MUNBYN ITP02 Portable Thermal Printer



Product Information

Specifications

- **Model:** ITP02
- **Power Source:** Type-C Charge Port
- **Features:** On/Off Button, Paper Feed Direction Control, Paper Output Slot
- **Compatibility:** Type-C (Mac)

Product Usage Instructions

- To turn on the device, press the On/Off button. To turn it off, press and hold the same button until the device powers down.
- Use the controls provided to adjust the paper feed direction according to your requirements. Ensure proper alignment for smooth operation.
- Connect the Type-C charge port to a compatible power source using the provided cable. The device will indicate when it is charging and when the battery is low.
- After processing, the paper will be output through the designated slot. Make sure to remove the paper promptly for continuous operation.

FAQ

- **Q:** What should I do if the device shows a “No paper placed” error?
- **A:** Check if the paper is correctly loaded in the input tray and adjust as needed. Ensure the paper meets the device’s specifications for size and type.
- **Q:** How do I know when the battery is low?
- **A:** The device will indicate a low battery status either through a visual alert or a notification on the display. Connect it to a power source for charging.

Product Introduction

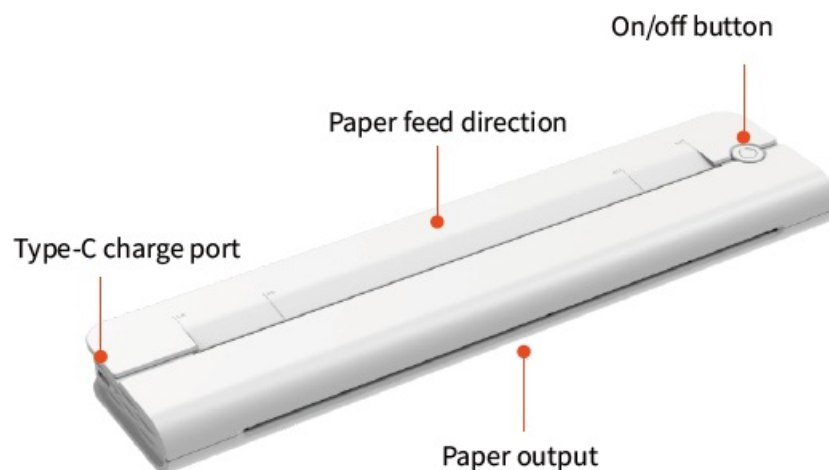
What's in the package?



- **A:** Printer
- **B:** USB Flash Drive
- **C:** USB Cable
- **D:** User Manual
- **E:** Quick Tips
- **F:** Type-C (mac)

If the contents are missing or damaged, please contact us.

Product Features



Set Up The Printer

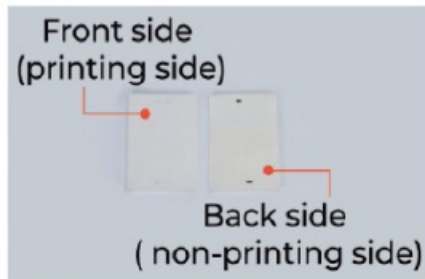
Recommend:

- Watch the short setup video at: <https://munbyn.biz/ltpoz> video

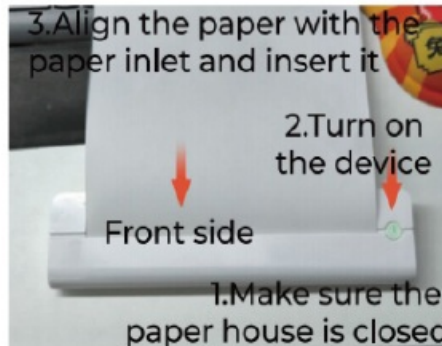
Quick printer connection



1 Unpack



2 Take out Paper



3 Loading Paper



4 Tear Paper

3

Bluetooth connection for Smartphone/Tablet

- The printer is suitable for bluetooth of mobile phones and tablets, but not compatible with bluetooth on computers, the printer cannot be connected directly via the Bluetooth of the device, it needs to be connected using the Munbyn Print APP.

Connect the printer through the Munbyn Print APP

- Search "Munbyn Print" on the App Store or Google Play to get the App or scan the QR code below to download



- Scan the QR code tutorial below to set it up



- If your mobile needs a PIN password, please enter “0000”.

Note

Due to the mobile phone system requirements, the app needs to access your location services information, you'll get a notification requesting permission. You need to enable GPS and confirm authorization (Android only).

USB connection for Laptop/PC

- Follow step (2.1 Quick printer connection) to connect the computer and printer using the USB cable.
- Download the printer driver from the following URL or insert the USB flash drive into your computer, and follow the steps (2.4.1-2.4.2) to complete the installation.

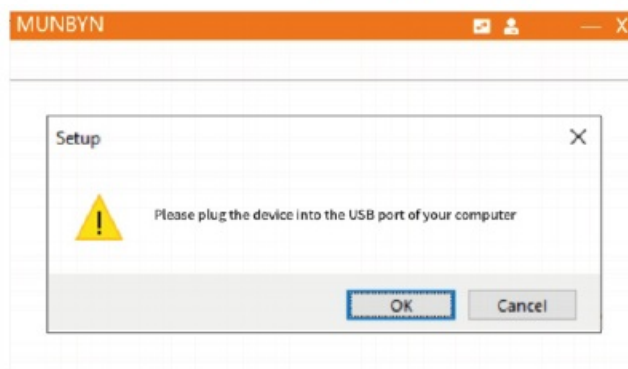
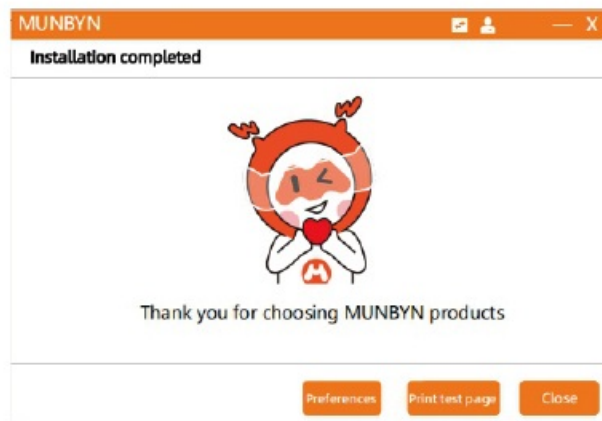
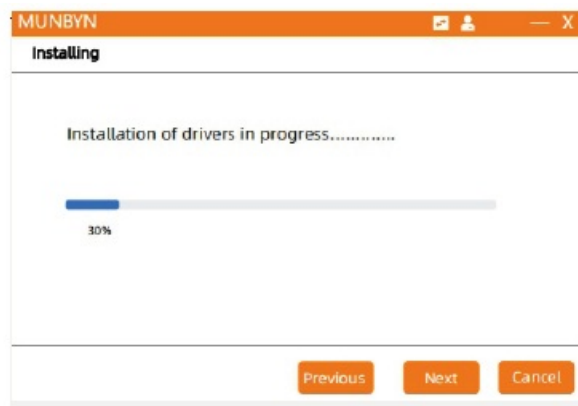
Note: For the latest driver, please visit: <https://munbyn.biz/130BD>

Windows Driver Installation

Downloaded software from the web address or insert the USB flash drive into your computer, open the driver installation package, Click on the .exe file for Windows computers. and follow the steps below to install

1. Run the “ITP02-Windows-Driver.exe” installer. Then follow the installation prompts until you see the message “Driver installation is complete”.
2. When printing the required documents, select the printer to print.

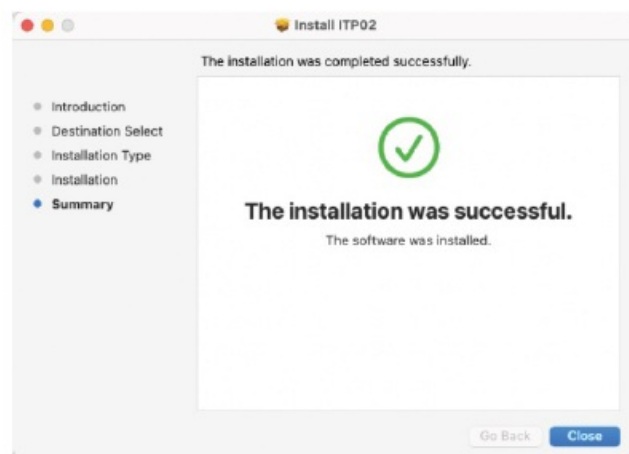
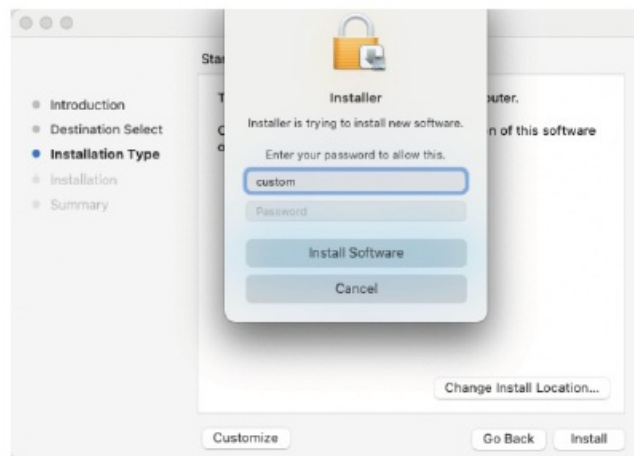
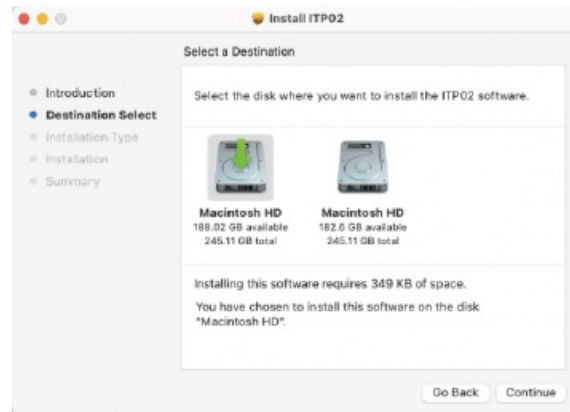
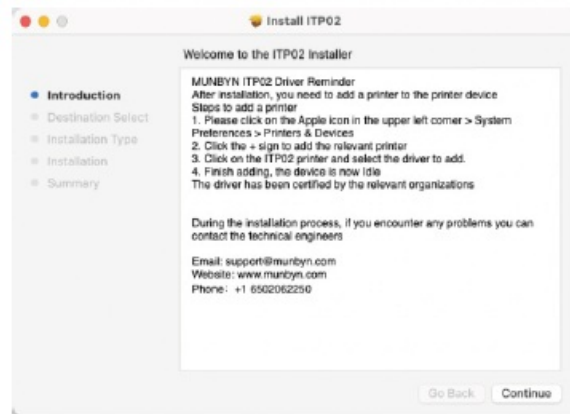




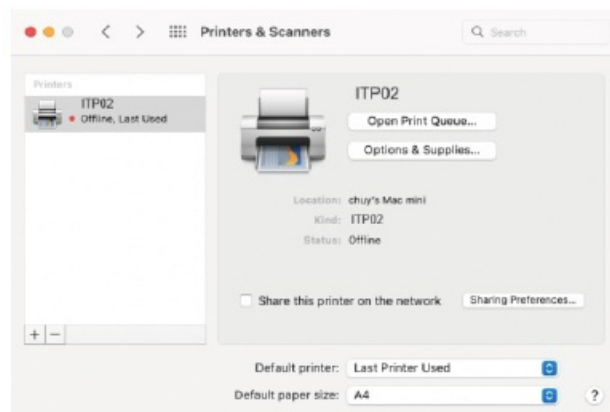
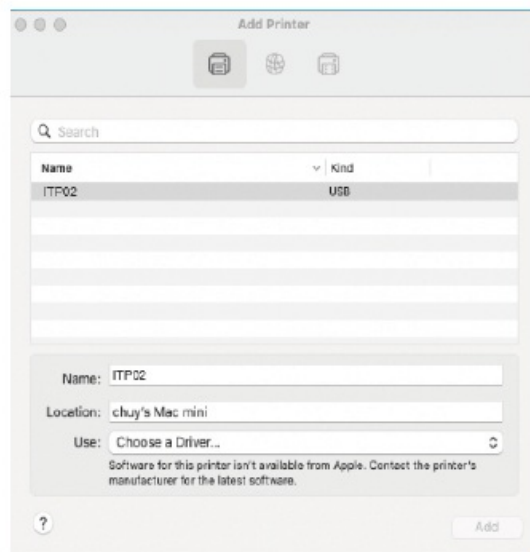
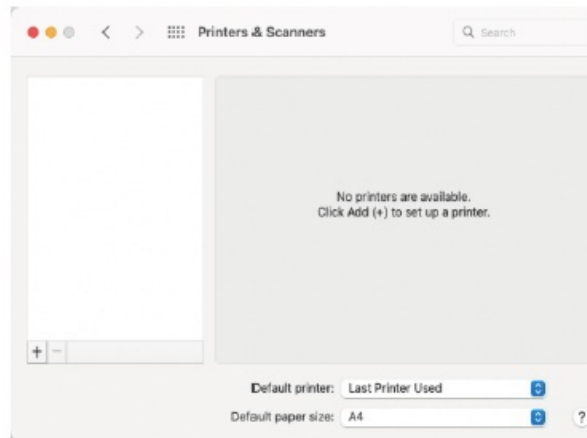
Tips: Please ensure that the printer is continuously plugged into the computer, if this window pops up means that the printer is not properly connected to the computer

Mac Driver Installation

Downloaded software from the web address or insert the USB flash drive into the computer, open the driver installation package, click the .dmg file of the Mac computer, and follow the steps below to install



Note: After installing the driver, you need to add the printer to the Mac system printer and scanner service



Pro Tips

- Anytime you change your printer, run the automatic label identification.
- Press the feeder button on the printer to skip a blank label.
- To run a self-test, press and hold the feeder button until you hear two short beeps.
- To ensure your printing quality, please use MUNBYN labels. If you use other brands' label paper, please run "automatic label identification" before printing.
- Regularly clean the printer head
- If the paper is jammed and the red light flashes, run Automatic label identification.
- Insert Munbyn into the same USB port on your computer every time.
- This will avoid creating duplicate copies of the printer in your operating system.

FAQ

- FAQ file, please visit: <https://munbyn.biz/130B-FAQ>

LED Status

Light	Description	Troubleshoot
Green	Bluetooth connected	
Red	No paper placed	
	Cover is not closed	Check that the cover is completely closed
Flashing Green	Charging	
Flashing Red (every 2 seconds)	Low battery	

Feeder Button Instruction

Printer status	Feeder button	Function
Standby	Press and hold on until you hear one beep	Automatic label identification
Standby	Press and hold on until you hear five beeps	Reset Printer

Specifications

Method	Direct Thermal
Resolution	203 dpi
Max Printing Speed	15 mm/s
Paper Width	208.0 mm
Paper Thickness	0.06-0.25 mm
Power Adapter	5V / 2 A
Printing Life	TPH 50Km
Operating Environment	Temperature: 0 to 45 °C Humidity: 10-90% (non condensing)
Storage Environment	Temperature: -10 to 50 °C Humidity: 10-80% (non condensing)
Connection	Bluetooth / USB
Weight	1.76 lbs/0.8kg
Dimensions	272x65x25mm(L*W*H)

Safety Notices

- The printer head can become very hot after printing labels. Do not touch the printer head
- Do not bend the power cord excessively or place objects on the cord.
- Do not use the printer if you find any irregularities as these could result in fire or electrocution.
- Keep the printer out of reach of children.
- Use only approved accessories and do not try to disassemble, or repair the unit by yourself.
- Keep the printer away from water and other objects that could penetrate the components.
- Please unplug the printer when it is not in use for long periods.

FCC STATEMENT

ISED RSS Warning/ISED RF Exposure Statement

ISED RSS Warning

This device complies with Innovation, Science and Economic Development Canada licence-exempt RSS standard(s). Operation is subject to the following two conditions:

1. this device may not cause interference, and
2. this device must accept any interference, including interference that may cause undesired operation of the device.

ISED RF exposure statement

This equipment complies with ISED radiation exposure limits set forth for an uncontrolled environment.

This device complies with part 15 of the FCC Rules. Operation is subject to the following two conditions:

1. This device may not cause harmful interference, and
2. This device must accept any interference received, including interference that may cause undesired operation.

Changes or modifications not expressly approved by the party responsible for compliance could void the user's authority to operate the equipment.

This equipment has been tested and found to comply with the limits for a Class B digital device, according to Part 15 of the FCC Rules. These limits are designed to provide reasonable protection against harmful interference in a residential installation. This equipment generates uses and can radiate radio frequency energy and, if not installed and used under the instructions, may cause harmful interference to radio communications. However, there is no guarantee that interference will not occur in a particular installation. Suppose this equipment does cause harmful interference to radio or television reception, which can be determined by turning the equipment off and on. In that case, the user is encouraged to try to correct the interference by one or more of the following measures:

- Reorient or relocate the receiving antenna.
- Increase the separation between the equipment and the receiver.
- Connect the equipment to an outlet on a circuit different from that to which the receiver is connected.
- Consult the dealer or an experienced radio/TV technician for help

This equipment complies with FCC radiation exposure limits set forth for an uncontrolled environment.

Tech Support

- E-mail: support@munbyn.com
- Whatsapp: +86 1335 295 0490
- Phone: +1 650 206 2250
- Skype: munbyn
- Support Time: Monday to Friday 24 hours.

Support Time: Monday to Friday 24 hours.

MUNBYN provides 24-month warranty and lifetime free service.

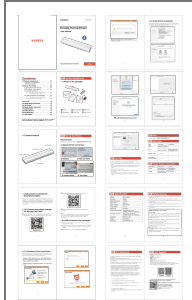
If you encounter any issues with the product, please contact the MUNBYN team to promptly receive troubleshooting tips or a replacement.



- You can access the link below or scan the QR code to download user manuals in other languages
- Other Languages: munbyn.biz/130bminorlang



Documents / Resources



[MUNBYN ITP02 Portable Thermal Printer](#) [pdf] User Manual
2A5LY-ITP02, 2A5LYITP02, itp02, ITP02 Portable Thermal Printer, ITP02, Portable Thermal Printer, Thermal Printer, Printer

References

- [User Manual](#)

Manuals+, Privacy Policy

This website is an independent publication and is neither affiliated with nor endorsed by any of the trademark owners. The "Bluetooth®" word mark and logos are registered trademarks owned by Bluetooth SIG, Inc. The "Wi-Fi®" word mark and logos are registered trademarks owned by the Wi-Fi Alliance. Any use of these marks on this website does not imply any affiliation with or endorsement.