



# MULTITECH MTCDD Conduit Programmable Gateway for the Internet User Guide

[Home](#) » [MULTITECH](#) » MULTITECH MTCDD Conduit Programmable Gateway for the Internet User Guide 

## Contents

- [1 MULTITECH MTCDD Conduit Programmable Gateway for the Internet](#)
- [2 Introduction](#)
- [3 Package Contents](#)
- [4 To install or replace the SIM Card:](#)
- [5 Installing the SD Card](#)
- [6 Documents / Resources](#)
  - [6.1 References](#)



**MULTITECH MTCDD Conduit Programmable Gateway for the Internet**



## Introduction

- Conduit® is a programmable gateway that uses an open Linux development environment to enable machine-to-machine (M2M) connectivity using various wireless interfaces. It also provides an online application store as a platform for developers to provision and manage their gateway and associated sensors and devices.

## Package Contents

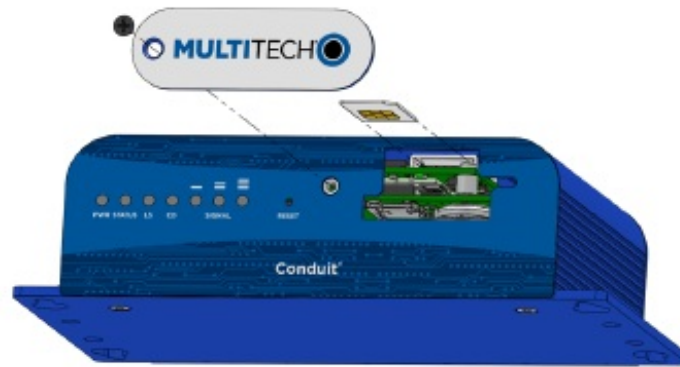
Conduit	1 - MTCDDT-Conduit
Power Supply	1 - 100-240V 9V-1.7A Power Supply with removable blades
	1 - NAM blade/plug
	1 - EURO blade/plug
	1 - UK blade/plug
Cables	1 - Micro USB Cable
	1 - Ethernet Cable RJ45 6-ft.
Antennas	Varies with Conduit Model
Customer Notices	Quick Start Guide
	Registration Card

## Installing the SIM Card

You need:

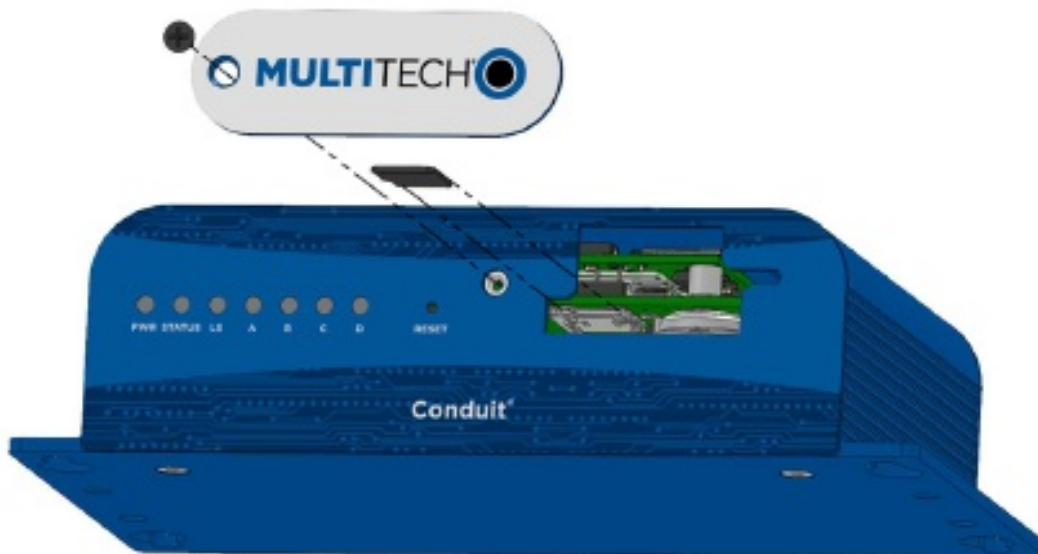
- Phillips screwdriver
- Mini SIM card (2FF form factor)

**To install or replace the SIM Card:**



1. Disconnect power to the device, if it is connected.
2. At the front of the device housing, remove the screw that secures the nameplate to the housing and remove the nameplate.
3. At the upper right side of the opening, locate the SIM and its sleeve. If a SIM card is installed and needs to be removed, slide it out of the sleeve.
4. Gently push the new or replacement SIM card into the sleeve face up with the cut corner to the right and the SIM contacts facing toward the interior of the housing.
5. Reattach the nameplate to the housing using the screw removed in step 2.

## Installing the SD Card



### You need:

- Phillips screwdriver
- SD memory card

To install or replace the SIM Card:

1. Disconnect power to the device, if it is connected.
2. At the front of the device housing, remove the screw that secures the nameplate to the housing and remove the nameplate.
3. Locate the SD card at the left side of the opening on the underside of the PC board. If an SD card is already

- installed, gently push on the card to release it from its setting and remove it from the housing with your fingers.
4. With the new SD card contacts facing up and toward the interior of the housing, gently push the card into the slot to secure it in place.
  5. Reattach the nameplate to the housing using the screw removed in step 2.

#### AEP model LEDs



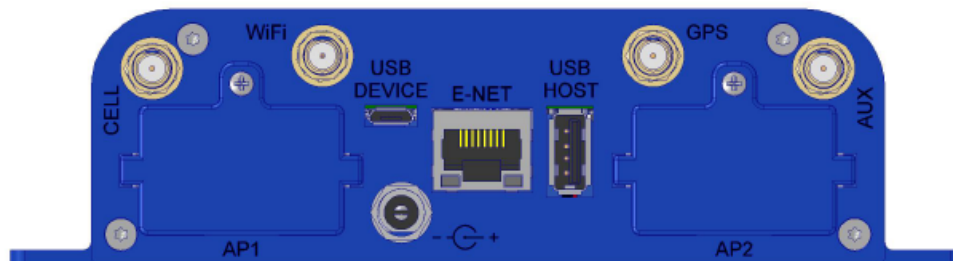
Label	Name	Description
PWR	Power	Solid (constant green) if unit is on, indicating that power is present.
STATUS	Power Status	Default Condition: LED blinks when mLinux is fully loaded.
LS	Link Status	Varies with radio model.
CD	Carrier Detect	This LED is on when a cellular data connection is made. Present on the Conduit Application model only.
Signal	Signal Strength	These 3 LEDs display the strength of the cellular signal. Present on the Conduit Application model only.


#### mLinux model LEDs



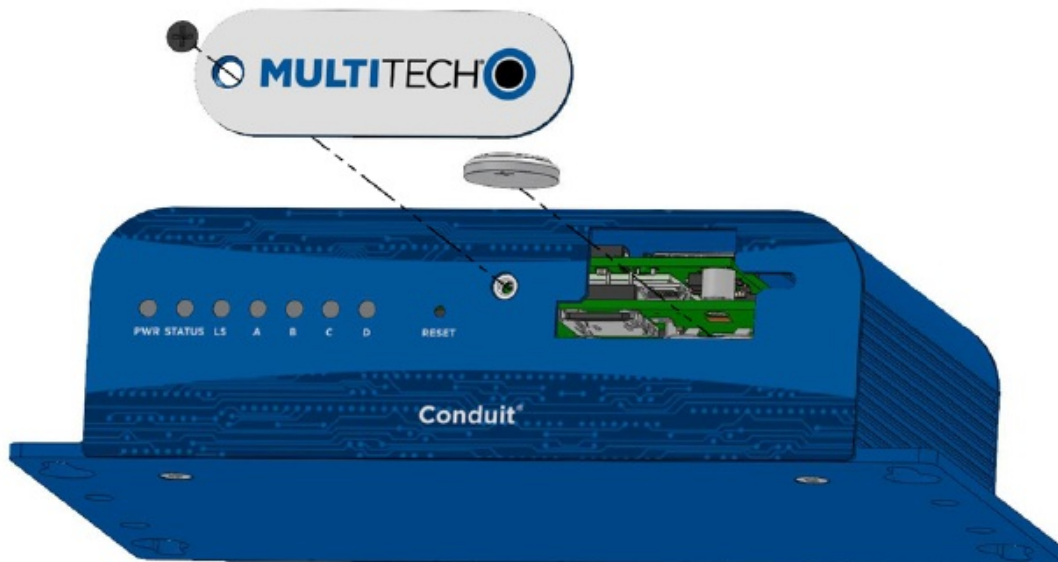
Label	Name	Description
PWR	Power	Solid (constant green) if unit is on, indicating that power is present.
STATUS	Power Status	Default condition: LED blinks when mLinux is fully loaded.
LS	Link Status	Varies with radio model.
A-B-C-D	--	These 4 LEDs are user-specified. Present on the Conduit mLinux model only.

**Back Panel Connectors (varies with model)**



Label	Description
CELL, AUX	Cellular antenna inputs. CELL: Primary AUX: Rx Diversity/MIMO
AP1, AP2	Slots for MultiTech accessory cards.
USB DEVICE	User-defined, high-speed 480 Mbps, standard USB 2.0 Micro B Connector.
E-NET	RJ-45 receptacle for standard Ethernet 10/100 Base-T.  <b>Caution:</b> Ethernet ports and command ports are not designed to be connected to a public telecommunication network.  <b>Caution:</b> Les ports Ethernet et de commande ne sont pas conçus pour être raccordés à un réseau de télécommunications public.
USB HOST	High-speed, standard USB 2.0 Type A connector. 500mA maximum current draw.
POWER 	9.32 VDC power receptacle for provided power cord.

## Replacing the Battery



#### **You need:**

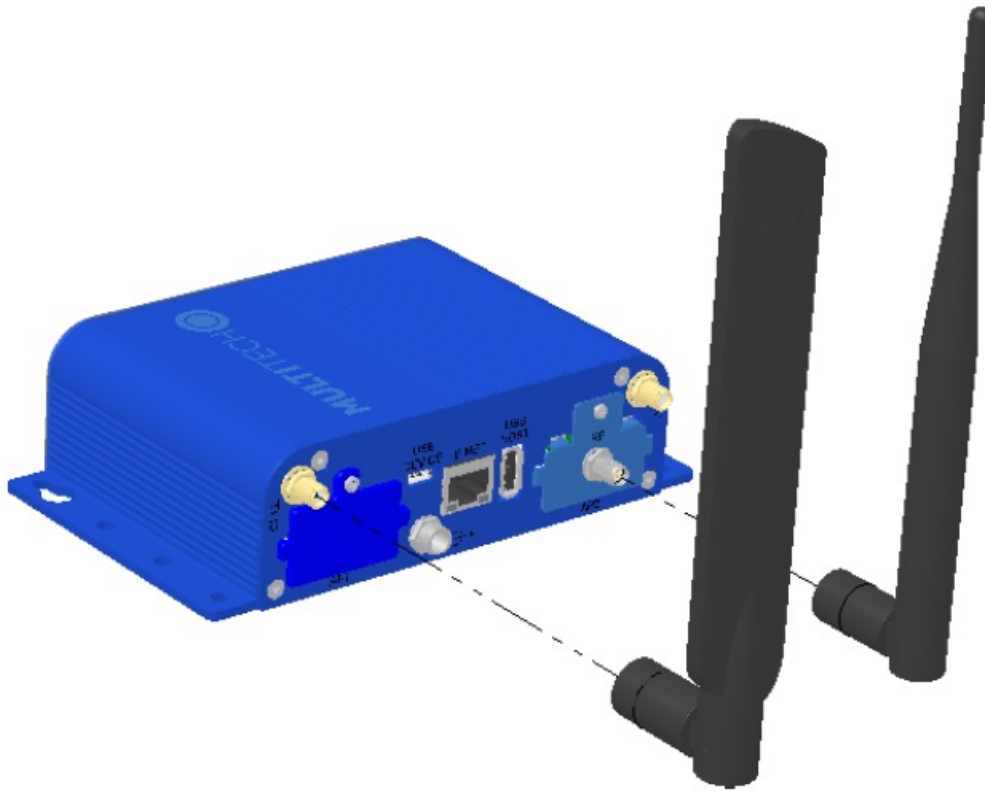
- Phillips screwdriver
- Non-metal tweezers or similar object
- CR1632 standard coin lithium battery

The battery is located in the device housing. To install or replace the battery:

1. Disconnect power to the device, if it is connected.
2. At the front of the device housing, remove the screw that secures the nameplate to the housing and remove the nameplate.
3. The battery holder is located at the right side of the opening on the underside of the PC board. Use non-metal tweezers as necessary to remove an existing battery.
4. Orient the new battery so that the positive (+) pole is facing down.  
Use your fingers or non-metal tweezers to insert the battery into the holder.
5. Reattach the MultiTech nameplate to the housing using the screw removed in step 2.

#### **Attaching the Antenna**





1. Attach the cellular antenna to the connector in the upper corner of the device.
2. If you have a LoRa accessory card, attach the LoRa antenna to the connector located on that card.

### Additional Information

For more details on the Conduit®, refer to the latest hardware and software information, including quick start guides, on the appropriate product page: <https://www.multitech.com/brands/multiconnect-conduit> MultiTech declares that this device is in compliance with the essential requirements and other relevant provisions of Directive 2014/53/EU. The declaration of conformity may be requested at <https://support.multitech.com>.

### Conduit® Quick Start

**Document Number:** 82101453L

### Copyright and Trademark

This publication may not be reproduced, in whole or in part, without the specific and express prior written permission signed by an executive officer of Multi-Tech Systems, Inc. All rights reserved. Copyright © 2019 by Multi-Tech Systems, Inc.

Multi-Tech Systems, Inc. makes no representations or warranties, whether express, implied or by estoppels, with respect to the content, information, material and recommendations herein and specifically disclaims any implied warranties of merchantability, fitness for any particular purpose and non-infringement. Multi-Tech Systems, Inc. reserves the right to revise this publication without obligation to notify any person or organization of such revisions or changes.

MultiTech, Conduit, and the MultiTech logo are registered trademarks of Multi-Tech Systems, Inc. All other brand and product names are trademarks or registered trademarks of their respective companies.

### Multi-Tech Systems, Inc

- 2205 Woodale Drive, Mounds View, Minnesota 55112 U.S.A.
- **Phone:** 763-785-3500 or 800-328-9717



- **Fax:** 763-785-9874

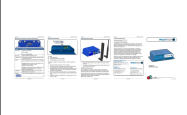
## Support Support Portal

- <https://support.multitech.com>
- **Europe, the Middle East, and Africa**
- [support@multitech.co.uk](mailto:support@multitech.co.uk)
- +(44) 118 959 7774

## Knowledge Base

- <http://www.multitech.com/kb.go>
  - **U.S., Canada, all others**
  - [support@multitech.com](mailto:support@multitech.com)
  - (800) 972-2439 or (763) 717-5863
  - **Business Hours:** M-F, 8 am to 5 pm CT
- 

## Documents / Resources

	<a href="#">MULTITECH MTCDT Conduit Programmable Gateway for the Internet</a> [pdf] User Guide MTCDT Conduit Programmable Gateway for the Internet, MTCDT, Conduit Programmable Gateway for the Internet, Programmable Gateway for the Internet, Gateway for the Internet, Internet
---	--

## References

- [User Manual](#)

[Manuals+](#), [Privacy Policy](#)

This website is an independent publication and is neither affiliated with nor endorsed by any of the trademark owners. The "Bluetooth®" word mark and logos are registered trademarks owned by Bluetooth SIG, Inc. The "Wi-Fi®" word mark and logos are registered trademarks owned by the Wi-Fi Alliance. Any use of these marks on this website does not imply any affiliation with or endorsement.