



Multilaser PC403A 2.4Ghz Wireless Keyboard and Wireless Mouse User Manual

[Home](#) » [Multilaser](#) » Multilaser PC403A 2.4Ghz Wireless Keyboard and Wireless Mouse User Manual 

Contents

- [1 Multilaser PC403A 2.4Ghz Wireless Keyboard and Wireless Mouse](#)
- [2 Product Information](#)
- [3 Product Usage Instructions](#)
- [4 Packing List](#)
- [5 Operation Guides](#)
- [6 Functions of Combination Keys](#)
- [7 Solution to Connection Failures](#)
- [8 FCC Statement](#)
- [9 Documents / Resources](#)

MULTILASER

Multilaser PC403A 2.4Ghz Wireless Keyboard and Wireless Mouse



Product Information

- **Manufacturer:** Dongguan Yuzhenrong Trading Co., Ltd.
- **Address:** Room 204 No.74 Humen Xinlian 9th Street Humen Village Humen Town Dongguan City Guangdong, China
- **Keyboard Name:** 2.4Ghz Wireless keyboard
- **Keyboard Model:** PC403A

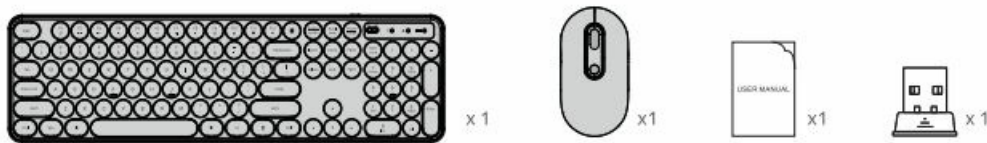
- **Mouse Name:** 2.4Ghz Wireless mouse
- **Mouse Model:** PC403A-1

Product Usage Instructions

1. Make sure the keyboard and mouse are powered on.
2. Ensure that the keyboard and mouse are within the range of the wireless connection.
3. Connect the wireless receiver to your computer's USB port.
4. Wait for the computer to detect and install the necessary drivers for the keyboard and mouse.
5. Once the drivers are installed, you can start using the keyboard and mouse.
6. To use the keyboard, type as you normally would on a regular keyboard.
7. To use the mouse, move it around on a flat surface to control the cursor on your computer screen.
8. For troubleshooting or further instructions, refer to the product manual or contact customer support.

- **Keyboard Name:**2.4Ghz Wireless keyboard
- **Keyboard:** PC403A
- **Mouse Name:**2.4Ghz Wireless mouse
- **Mouse:** PC403A-1

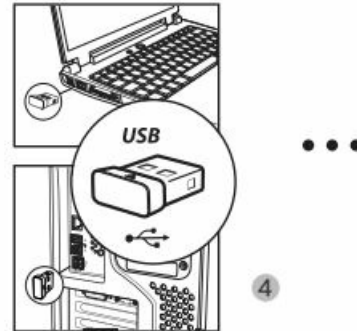
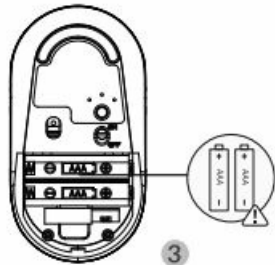
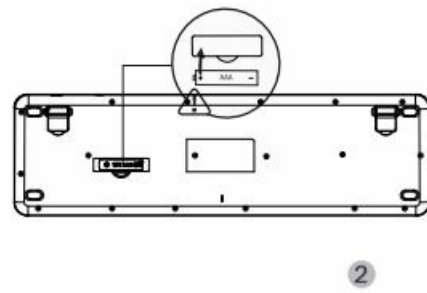
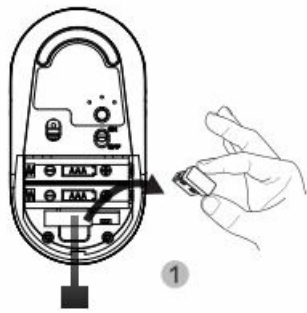
Packing List



- Keyboard x1
- Mouse x1
- USB receiver x1 (in the mouse battery compartment)
- User manual x1

Operation Guides

- 1.



- Fetch the wireless keyboard and mouse. Take out the USB receiver from the mouse battery compartment.
2. Insert one 1.5V AAA battery into the keyboard according to the positive and negative sign. And turn on the power switch.
3. Insert two 1.5V AAA batteries into the mouse according to the positive and negative sign. And turn on the power switch.
4. Plug the receiver into the USB port of your computer.
5. When the computer installs driver automatically, they start to serve.

Functions of Combination Keys

- FN+F1= audio on
- FN+F2= volume down
- FN+F3= volume up
- FN+F4= mute
- FN+F5= previous track
- FN+F6= next track
- FN+F7= play / pause
- FN+F8= stop
- FN+F9= homepage
- FN+F10= email
- FN+F11= my computer
- FN+F12= favorites

Features

1. The mouse and keyboard share a common receiver. And the receiver is in the battery compartment at the bottom of the mouse.
2. Adjustable mouse DPI levels: 800-1200-1600 (default setting is 1200).
3. It has automatic Sleep mode and Wake up mode. When the mouse hasn't been used for 10 min, it will enter

sleep mode. Press any button to wake up the mouse. If it will be unused for a long time, turn off the power switch to save power.

4. Compatibilities: Windows XP /VISTA / 7 / 8 / 10; Mac (Functions of combination keys are not available).

Considerations

1. Use 1.5V AAA battery only. To prevent from damage to internal elements, avoid using excessive-voltage batteries. If the product will be unused for a long time, take out the battery to prevent from corrosion.
2. The product adopts the 2.4GHz wireless transmission with a 10-meter transmission distance. The distance may be shortened for big obstructions and low battery.
3. For the first use, the product may fail to work (connection error etc.) for it has been unused for a long time. Try pairing again.

Solution to Connection Failures

Keyboard

1. Take out the battery from the keyboard and receiver from the computer.
2. Reinstall battery into the keyboard. And plug the receiver into the USB port of the computer.
3. Turn on the power switch of the keyboard, which should be within 20cm away from the receiver. Press and hold “ESC” and “K” keys together to pair again.

Mouse

1. Take out the battery from the mouse and the receiver from the computer.
2. Reinstall battery into the mouse. And plug the receiver into the USB port of the computer.
3. Turn on the power switch of the mouse, which should be within 20cm away from the receiver. Press and hold the Right button and Scroll button together to pair again.

Note:

If the above solution doesn't help, repeat the above procedures to pair again. If it still can't work contact our service team to work for you.

Correct disposal of this product

(Waste Electrical & Electronic Equipment) This Marking shown on the product or its literature, indicate that it should not be disposed with other household wastes at the end of its working life. To prevent possible harm to the environment or human health from uncontrolled waste disposal, please separate this from other types of wastes and recycle it responsibly to promote the sustainable reuse of material resources. Household user should contact either the retailer where they purchased this product, or their local government office, for details of where and how they can take this item for environmentally safe recycling. Business users should contact their supplier and check the terms and conditions of the purchase contract. This product should not be mixed with other commercial wastes for disposal.

FCC Statement

Any Changes or modifications not expressly approved by the party responsible for compliance could void the user's authority to operate the equipment. This device complies with part 15 of the FCC Rules.

Operation is subject to the following two conditions:

1. This device may not cause harmful interference, and
2. this device must accept any interference received, including interference that may cause undesired operation.


Note: This equipment has been tested and found to comply with the limits for a Class B digital device, pursuant to part 15 of the FCC Rules. These limits are designed to provide reasonable protection against harmful interference in a residential installation. This equipment generates, uses and can radiate radio frequency energy and, if not installed and used in accordance with the instructions, may cause harmful interference to radio communications. However, there is no guarantee that interference will not occur in a particular installation. If this equipment does cause harmful interference to radio or television reception, which can be determined by turning the equipment off and on, the user is encouraged to try to correct the interference by one or more of the following measures:

- Reorient or relocate the receiving antenna.
- Increase the separation between the equipment and receiver.
- Connect the equipment into an outlet on a circuit different from that to which the receiver is connected.
- Consult the dealer or an experienced radio/TV technician for help.

FCC Radiation Exposure Statement

This equipment complies with FCC radiation exposure limits set forth for an uncontrolled environment.

Documents / Resources

	Multilaser PC403A 2.4Ghz Wireless Keyboard and Wireless Mouse [pdf] User Manual PC403A, PC403A-1, PC403A 2.4Ghz Wireless Keyboard and Wireless Mouse, 2.4Ghz Wireless Keyboard and Wireless Mouse, Wireless Keyboard and Wireless Mouse, Keyboard and Wireless Mouse, Wireless Mouse, Mouse
---	--