



# Multi IR MIR-TE200 WiFi Temperature and Humidity Detector User Manual

[Home](#) » [Multi IR](#) » Multi IR MIR-TE200 WiFi Temperature and Humidity Detector User Manual 



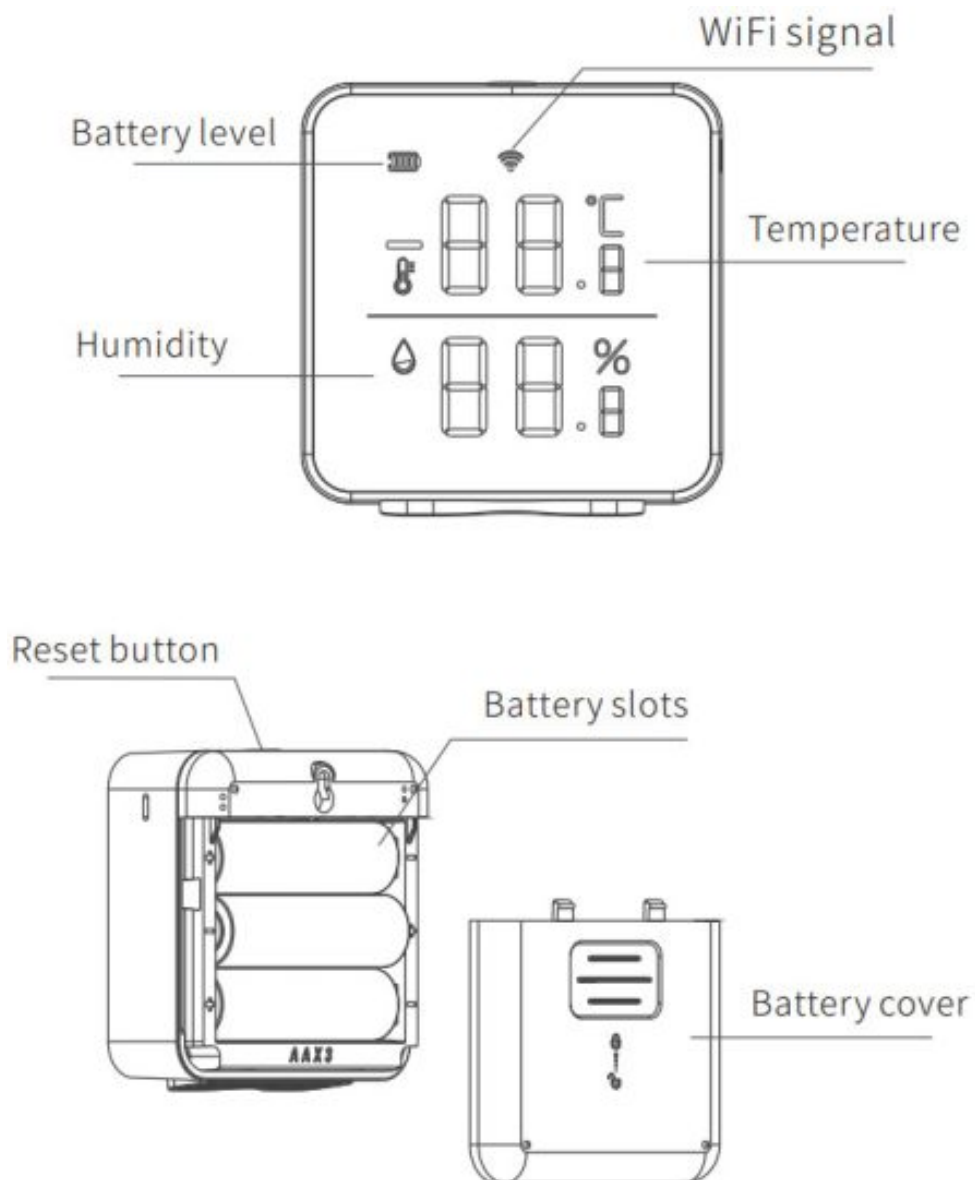
MIR TE200 WiFi Temperature and Humidity Detector  
User Manual



## Contents

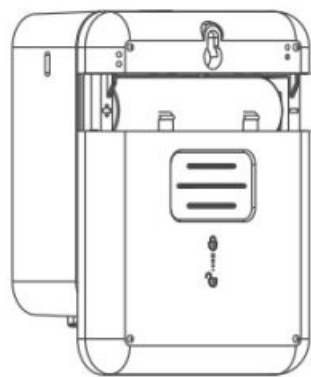
- 1 [Product Description](#)
- 2 [Network Setting](#)
- 3 [Installation Instructions](#)
- 4 [App Download](#)
- 5 [Network Setting](#)
- 6 [Attention:](#)
- 7 [Technical Parameters](#)
- 8 [Toxic or Hazardous Substances or Elements Warranty Certificate of this Product](#)
- 9 [Warranty Certificate](#)
- 10 [User Form](#)
- 11 [Vendor Form](#)
- 12 [Documents / Resources](#)
- 13 [Related Posts](#)

## Product Description

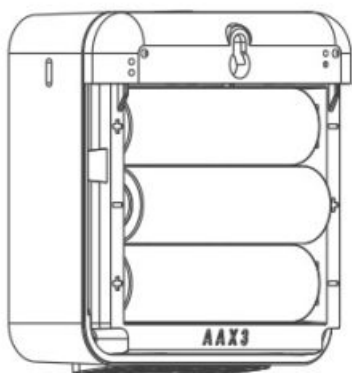


## Network Setting

1. Power on the product.

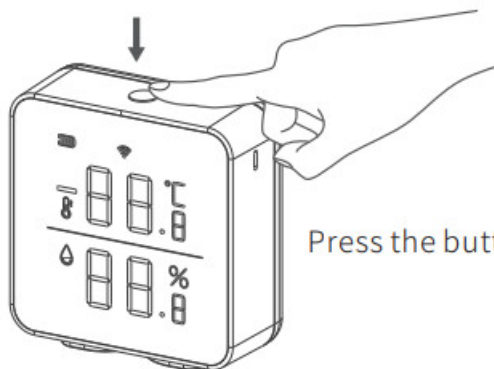


↓ Slide down the rear cover to open.



← Put in 3\*AA batteries.

2. Press the reset button for 5s, the signal icon flashes, the detector is the in-network setting status.



Press the button for 5s.

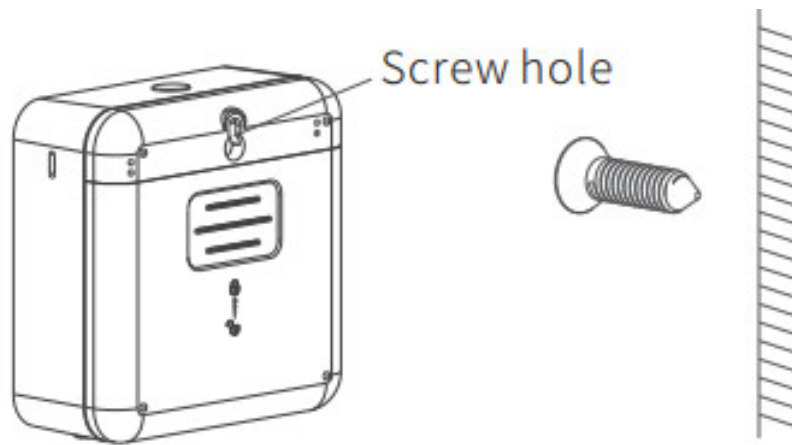


#### Network setting note:

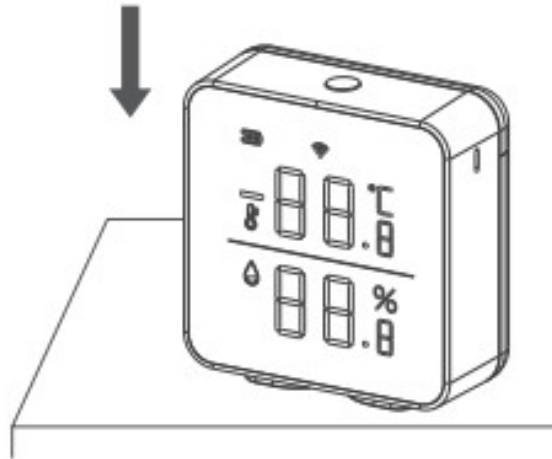
- Press the button for 5s-10s, when the signal icon flashes, release the button for the network setting. It will last for the 60s for the network setting, and the signal icon keeps on flashing pressing for more than 10s, the network setting is canceled.
- If succeeds, the signal icon is on; If not, the signal icon disappears. the setting is canceled.

### Installation Instructions

**Method 1:** fix one screw to the wall, align the device screw hole to the screw.



**Method 2:** Put the detector in a suitable place.



## App Download

1. Search for “Smart Life” in APP Store or Google Play Store. Or, scan the below QR code to download the APP.

Scan to download Smart Life APP



<https://smartapp.tuya.com/smartlife>

Scan to download Smart Life APP

## Network Setting

1. Power on the WiFi device;
2. Make sure the network indicator flash(if not, long-press the reset button until the indicator flashes).
3. On the App homepage, click “+” on the top right corner; Click “Security&Sensors” on the left side of the page, and select the right WiFi sensor type to add a device;
4. If successfully added, the device will be on the “My home” list.

## Attention:

1. When the detecting environment changes rapidly, such as moving from outdoor to indoor, then the device needs about 20 minutes to detect a new environment.
2. If the device is handheld, human body temperature will affect the detector readings.
3. Make sure that the air hole is not blocked.

## Technical Parameters

Wireless Technology	WiFi
Working Voltage	DC 4.5V (3*AA battery)
Transmission Frequency	2.4GHz
Low power indication	Yes
Working Temperature and Humidity	-10°C ~ +55°C 0% ~100% RH
Wireless distance	70m (Open air) /Indoor 20m
Size	64 x 64 x 28mm

## Toxic or Hazardous Substances or Elements Warranty Certificate of this Product

Component Name	Toxic or Hazardous Substances or Elements					
	Lead (FS)	Mercury (Hg)	Cadmium (Cd)	Hexavalent chromium (Cr (VI))	Polybrominated biphenyls (PBBs)	Polybrominated diphenyl ethers (PBDEs)
LED	0	0	0	0	0	0
PCB	0	0	0	0	0	0
Cover and other components	0	0	0	0	0	0

This table comp with Sift 11364.

**Q:** indicates that the toxic or hazardous substance amount contained M all homogeneous materials of a component does not exceed that stipulated in GB/T 26572

**X:** Indicates that the toxic or hazardous substance amount contained in at least one of the homogeneous mater



ials of a component exceeds that stipulated in GB/T26572.

## Warranty Certificate

### Warranty policy:

1. If the product has quality problems within 7 days of the payment date, you can apply for a refund based on the invoice price or to replace it with the same model or have it repaired.
2. If the product has quality problems within 15 days of the payment date, you can apply to replace the product with the same model or have it repaired.
3. If the product has quality problems within 12 months of the payment date, you can apply to have it repaired.

What is not covered under this warranty:

1. The product owner has no warranty certificate or the warranty service has expired.
2. Damage caused by improper use, maintenance, or storage
3. Damage caused by disassembly and repair without Tuya's authorization
4. Damage caused by force Majeure
5. Normal discoloration and depreciation after the product has been used

## User Form

User information (Specify real information. Tuya promises to use the information only for after-sales services.)

Name\_\_\_\_\_

Phone number\_\_\_\_\_

Email\_\_\_\_\_

Zipcode\_\_\_\_\_

Address\_\_\_\_\_

Product information

Name\_\_\_\_\_

Model\_\_\_\_\_

Color\_\_\_\_\_

Product SN\_\_\_\_\_

Service Return ☐ Replace ☐ Repair ☐

Fault symptoms\_\_\_\_\_

Handling date\_\_\_\_\_

Maintenance personnel signature\_\_\_\_\_

## Vendor Form

User information (Specify real information. Tuya promises to use the information only for after-sales services.)

Name\_\_\_\_\_

Phone number\_\_\_\_\_

Email\_\_\_\_\_

Zipcode\_\_\_\_\_

Address\_\_\_\_\_

Product information

Name\_\_\_\_\_

Model\_\_\_\_\_

Color\_\_\_\_\_

Product SN\_\_\_\_\_

Service Return ☐ Replace ☐ Repair ☐

Fault symptoms\_\_\_\_\_

Handling date\_\_\_\_\_

Maintenance personnel signature\_\_\_\_\_

**Caution:**

This device complies with Part 15 of the FCC rules and Industry Canada license-exempt RSS standard(s). Operation is subject to the following two conditions:

1. this device may not cause harmful interference, and
2. this device must accept any interference received, including interference that may cause undesired operation.

The manufacturer is not responsible for any radio or TV interference caused by unauthorized modifications or changes to this equipment. Such modifications or change could void the user’s authority to operate the equipment.

This radio transmitter (identify the device by certification number or model number if Category II) has been approved by Industry Canada to operate with the antenna types listed below with the maximum permissible gain indicated. Antenna types not included in this list, having a gain greater than the maximum gain indicated for that type, are strictly prohibited for use with this device.


This equipment has been tested and found to comply with the limits for a Class B digital device, pursuant to part 15 of the FCC Rules. These limits are designed to provide reasonable protection against harmful interference in a residential installation.

This equipment generates, uses, and can radiate radio frequency energy and, if not installed and used in accordance with the instructions, may cause harmful interference to radio communications. However, there is no guarantee that interference will not occur in a particular installation. If this equipment does cause harmful interference to radio or television reception, which can be determined by turning the equipment off and on, the user is encouraged to try to correct the interference by one or more of the following measures:

- Reorient or relocate the receiving antenna.
- Increase the separation between the equipment and receiver.
- Connect the equipment into an outlet on a circuit different from that to which the receiver is connected.
- Consult the dealer or an experienced radio/TV technician for help.

The device has been evaluated to meet general RF exposure requirements. To maintain compliance with FCC’s RF exposure guidelines, this equipment should be installed and operated with a minimum distance of 20cm between the radiator and your body.

**Documents / Resources**

	<a href="#">Multi IR MIR-TE200 WiFi Temperature and Humidity Detector</a> [pdf] User Manual MIR-TE200, MIRTE200, 2AUJ3MIR-TE200, 2AUJ3MIRTE200, MIR-TE200 WiFi Temperature and Humidity Detector, WiFi Temperature and Humidity Detector
---	---