



Multi IR 07040287 WiFi PIR Motion Sensor User Manual

[Home](#) » [Multi IR](#) » Multi IR 07040287 WiFi PIR Motion Sensor User Manual 

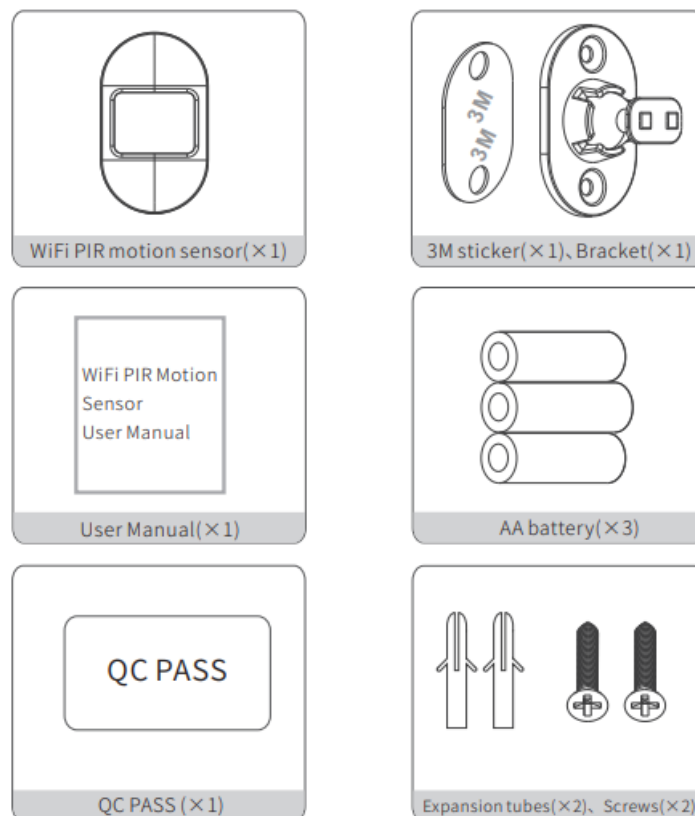
WiFi PIR Motion Sensor User Manual



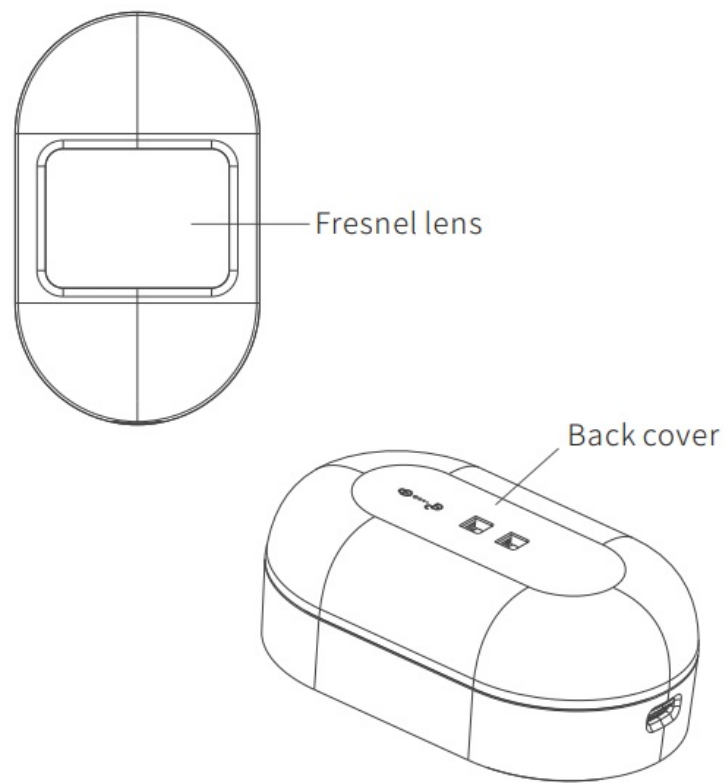
Contents

- 1 Packing List
- 2 Product Description
- 3 Network Setting
- 4 Installation Instructions
- 5 App Download
- 6 Technical Parameters
- 7 Toxic or Hazardous Substances or Elements of this Product
- 8 Warranty Certificate
- 9 User Form
- 10 Vendor Form
- 11 Documents / Resources
- 12 Related Posts

Packing List

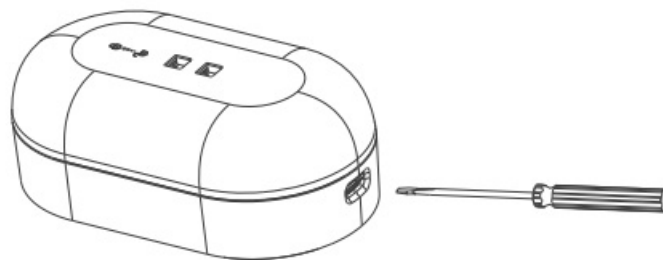


Product Description

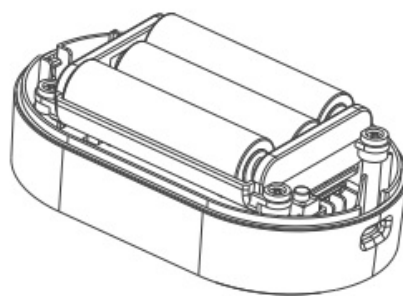


Network Setting

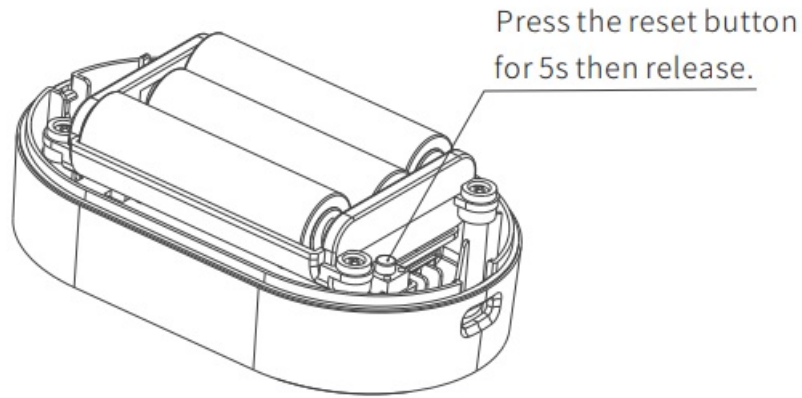
1. Power on the product.



Open the back cover with screw driver



- Power on the device with 3*AA batteries, the red indicator flashes slowly for one minute.
2. Press the reset button for 5S and release, the green LED will flash for the network setting.



Distribution network hint:• Press the button for 5s-10s, the red LED is on for 5 sec then turns off.

Release the button for the network setting, the green LED flashes during networking.

- The green LED will be on for 5s then turns off to indicate the network setting succeeds. If fails, the green LED is off.

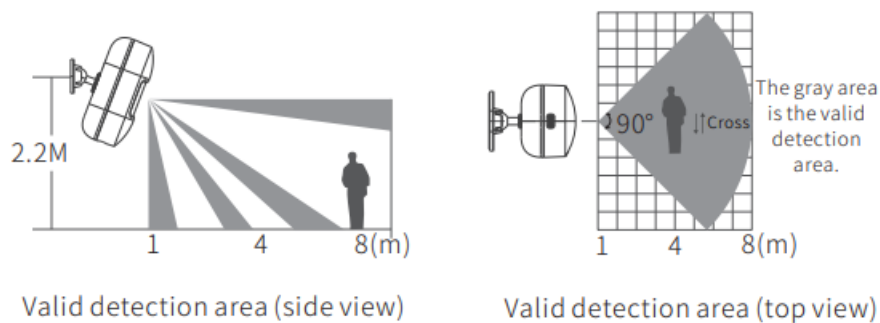
3. Installation Instructions:

- (1) After powered on, the product will enter the self-checking state and the red LED will flash for the 60s.
- (2) After self-checking, the product enters test mode for 5 minutes. When it detects a human motion, the red LED flashes and sends an alarm signal.
- (3) During working status, press the set button, the red LED flashes once, then enter testing mode.
- (4) After testing mode, the detector enters working mode and has no motion status. When human motion is detected, the red LED is on and sends an alarm signal. After the alarm, if continuous motion is detected, it won't send an alarm signal. Until no motion is detected for 1 minute, it restores to no motion status and working mode.

Installation Instructions

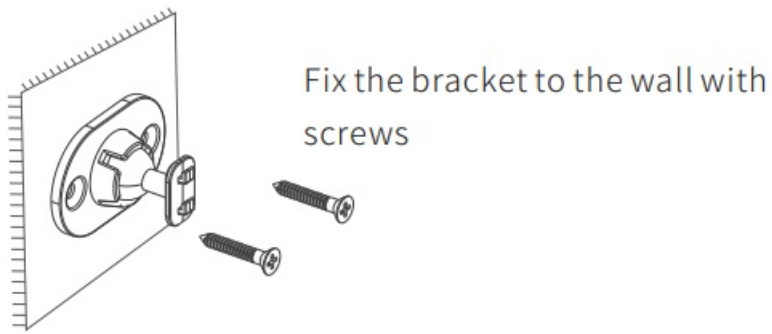
1. Installation position:

Install the product where persons may be detected to cross. It is recommended that the product be about 2.2m above the ground, as shown in the following figure.

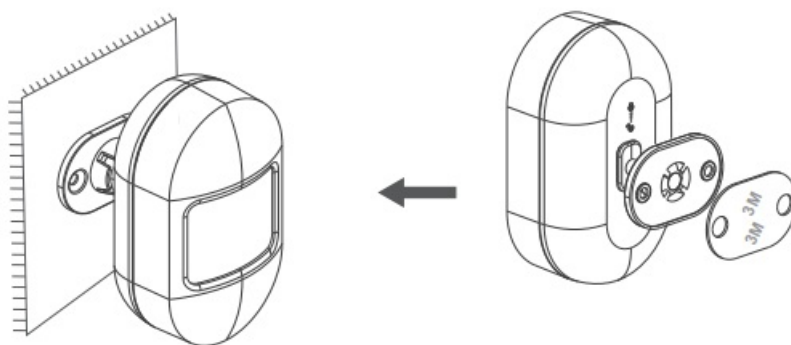
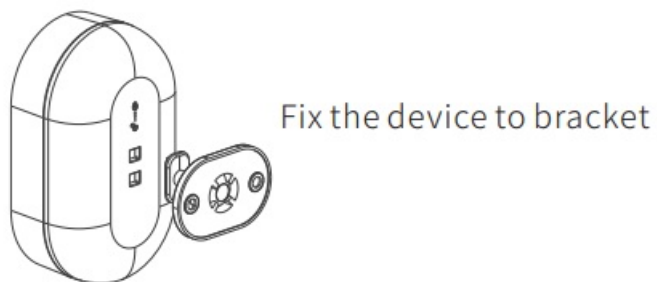


2. Wall-mounted type

- (1) Using screws:



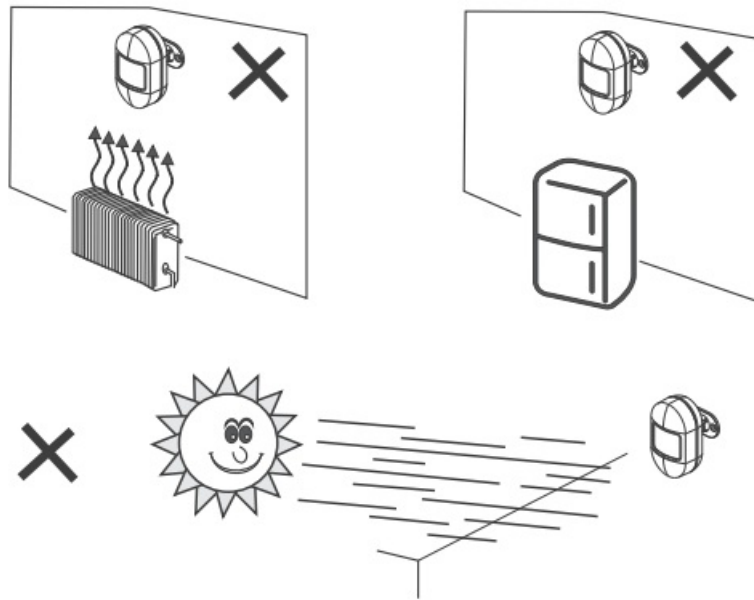
(2)M sticker installation:



Stick to a suitable place with a 3M sticker.

3. Notice:

- Make sure no obstacles in the detection area.
- Wireless distance will be weakened if there are blocks (such as walls) between the device and the WiFi router.
- Install the product away from objects that may cause temperature changes, such as the air conditioner, fan, refrigerator, and oven. Do not expose the product to the sun.



App Download

1. Search for “Smart Life” in APP Store or Google Play Store. Or, scan the below QR code to download the APP.



Scan to download
Smart Life APP

<https://smartapp.tuya.com/smartlife>


Network Setting

1. Power on the WiFi device;
2. Make sure the network indicator flash(if not, long-press the reset button until the indicator flashes.)
3. On the App homepage, click “+” on the top right corner; Click “Security&Sensors” on the left side of the page, and select the right WiFi sensor type to add a device;
4. If successfully added, the device will be on the “My home” list.

Technical Parameters

| | |
|------------------------|---|
| Wireless Technology | WiFi |
| Working Voltage | DC 4.5V (3*AA battery) |
| Transmission Frequency | 2.4GHz |
| Working Temperature | -10°C~, +55°C |
| Low power indication | Yes |
| Detecting range | 8m |
| Detection angle | 90° |
| Installation height | 2.2m |
| Size | 95.0 x 56.0x 42.0-53.0 (with bracket)mm |

Toxic or Hazardous Substances or Elements of this Product

| Component Name | Toxic or Hazardous Substances or Elements | | | | | |
|---|---|--------------|--------------|-------------------------------|---------------------------------|--|
| | Lead (Pb) | Mercury (Hg) | Cadmium (Cd) | Hexavalent chromium (Cr (VI)) | Polybrominated biphenyls (PBBs) | Polybrominated diphenyl ethers (PBDEs) |
| LED | 0 | 0 | 0 | 0 | 0 | 0 |
| PCB | 0 | 0 | 0 | 0 | 0 | 0 |
| Cover and other components | 0 | 0 | 0 | 0 | 0 | 0 |
| <p>This table complies with SJ/T 11364.</p> <p>0: indicates that the toxic or hazardous substance amount contained in all homogeneous materials of a component does not exceed that stipulated in GB/T 26572.</p> <p>X: Indicates that the toxic or hazardous substance amount contained in at least one of the homogeneous materials of a component exceeds that stipulated in GB/T 26572.</p> <div style="text-align: center;">  </div> | | | | | | |

Warranty Certificate

Warranty policy:

1. If the product has quality problems within 7 days of the payment date, you can apply for a refund based on the invoice price or to replace with the same model or have it.
2. If the product has quality problems within 15 days of the payment date, you can apply to replace the product with the same model or have it repaired.
3. If the product has quality problems within 12 months of the payment date, you can apply to have it

What is not covered under this warranty:

1. The product owner has no warranty certificate or the warranty service has expired.
2. Damage caused by improper use, maintenance, or storage
3. Damage caused by disassembly and repair without Tuya's authorization
4. Damage caused by force majeure
5. Normal discoloration and depreciation after the product has been used

User Form

User information (Specify real information. Tuya promises to use the information only for after-sales services.)

Name _____
Phone number _____
Email _____
Zipcode _____
Address _____
Product information _____
Name _____
Model _____
Color _____
Product SN _____

Service
Return ☐
Replace ☐
Repair ☐

Fault symptoms _____
Handling date _____
Maintenance personnel signature _____

Vendor Form

User information (Specify real information. Tuya promises to use the information only for after-sales services.)

Name _____
Phone number _____
Email _____
Zipcode _____
Address _____
Product information _____
Name _____
Model _____
Color _____
Product SN _____

Service
Return ☐
Replace ☐
Repair ☐

Fault symptoms _____
Handling date _____
Maintenance personnel signature _____

Caution:

This device complies with Part 15 of the FCC rules and Industry Canada license-exempt RSS standard(s).
Operation is subject to the following two conditions:

1. this device may not cause harmful interference, and
2. this device must accept any interference received, including interference that may cause undesired operation.

The manufacturer is not responsible for any radio or TV interference caused by unauthorized modifications or changes to this equipment. Such modifications or changes could void the user's authority to operate the equipment.

This radio transmitter (identify the device by certification number or model number if Category II) has been approved by Industry Canada to operate with the antenna types listed below with the maximum permissible gain indicated. Antenna types not included in this list, having a gain greater than the maximum gain indicated for that type, are strictly prohibited for use with this device.

This equipment has been tested and found to comply with the limits for a Class B digital device, pursuant to part 15 of the FCC Rules. These limits are designed to provide reasonable protection against harmful interference in a residential installation.

This equipment generates, uses, and can radiate radio frequency energy and, if not installed and used in accordance with the instructions, may cause harmful interference to radio communications. However, there is no guarantee that interference will not occur in a particular installation. If this equipment does cause harmful interference to radio or television reception, which can be determined by turning the equipment off and on, the user is encouraged to try to correct the interference by one or more of the following measures:

- Reorient or relocate the receiving antenna.
- Increase the separation between the equipment and receiver.
- Connect the equipment into an outlet on a circuit different from that to which the receiver is connected.
- Consult the dealer or an experienced radio/TV technician for help.

The device has been evaluated to meet general RF exposure requirements.

To maintain compliance with FCC's RF exposure guidelines, this equipment should be installed and operated with a minimum distance of 20cm between the radiator and your body.

Caution:

This device complies with Part 15 of the FCC rules and Industry Canada license-exempt RSS standard(s). Operation is subject to the following two conditions: (1) this device may not cause harmful interference, and (2) this device must accept any interference received, including interference that may cause undesired operation.

The manufacturer is not responsible for any radio or TV interference caused by unauthorized modifications or changes to this equipment. Such modifications or changes could void the user's authority to operate the equipment.

This radio transmitter (identify the device by certification number or model number if Category II) has been approved by Industry Canada to operate with the antenna types listed below with the maximum permissible gain indicated. Antenna types not included in this list, having a gain greater than the maximum gain indicated for that type, are strictly prohibited for use with this device.


This equipment has been tested and found to comply with the limits for a Class B digital device, pursuant to part 15 of the FCC Rules. These limits are designed to provide reasonable protection against harmful interference in a residential installation. This equipment generates, uses, and can radiate radio frequency energy and, if not installed and used in accordance with the instructions, may cause harmful interference to radio communications. However, there is no guarantee that interference will not occur in a particular installation. If this equipment does cause harmful interference to radio or television reception, which can be determined by turning the equipment off and on, the user is encouraged to try to correct the interference by one or more of the following measures:

- Reorient or relocate the receiving antenna.
- Increase the separation between the equipment and receiver.
- Connect the equipment into an outlet on a circuit different from that to which the receiver is connected.
- Consult the dealer or an experienced radio/TV technician for help.

The device has been evaluated to meet general RF exposure requirements.

To maintain compliance with FCC's RF exposure guidelines, this equipment should be installed and operated with a minimum distance of 20cm between the radiator and your body.

Documents / Resources

| | |
|---|---|
|  | Multi IR 07040287 WiFi PIR Motion Sensor [pdf] User Manual MIR-IR300, MIRIR300, 2AUJ3MIR-IR300, 2AUJ3MIRIR300, MIR-IR300 WiFi PIR Motion Detec tor, 07040287 WiFi PIR Motion Sensor, 07040287, WiFi PIR Motion Sensor |
|---|---|

Manuals+.