



## MUL TECHNOLOGIES MARC 3 Series Promat DX User Guide

[Home](#) » [MUL TECHNOLOGIES](#) » MUL TECHNOLOGIES MARC 3 Series Promat DX User Guide 

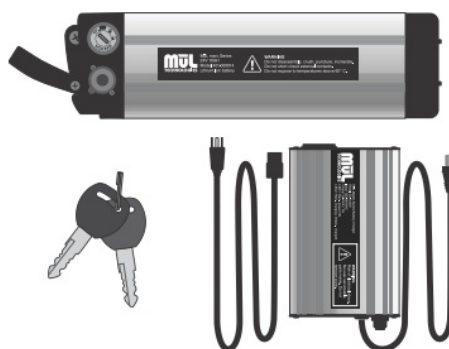


### MARC 3 Series Quick Start Guide

#### Contents

- [1 MARC 3 Series Promat DX](#)
- [2 Verify emergency stop button is not activated \(pressed in\).](#)
- [3 Program your first locations.](#)
- [4 Documents / Resources](#)
- [5 Related Posts](#)

### MARC 3 Series Promat DX

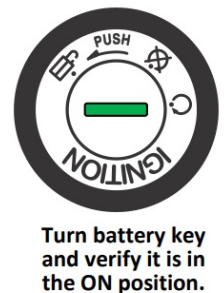
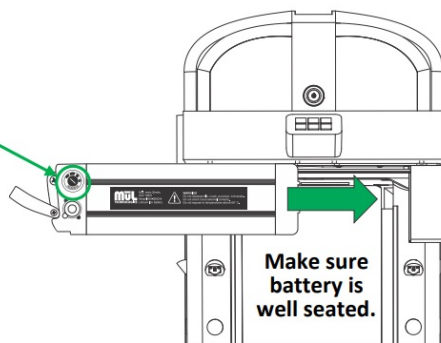
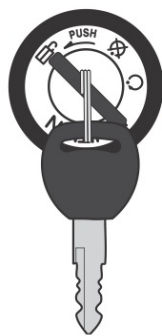
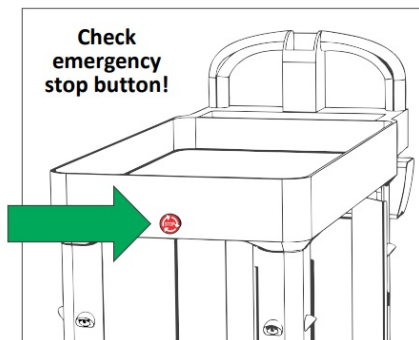
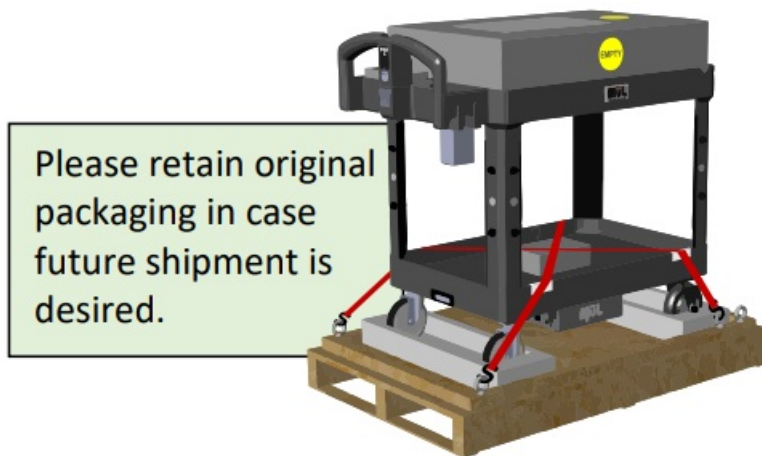


Verify emergency stop button is not activated (pressed in).

**Rotate the button clockwise to reset.**

Insert battery by sliding onto rails and pushing until fully seated.

Insert key into battery and turn to “On” position. Press the Power button above the EZ-Go Navigation panel. LEDs will be yellow whilebooting – wait approximately 2-3 minutes for unit to complete booting – until “Cart ready” is heard and LEDs begin pulsing green.

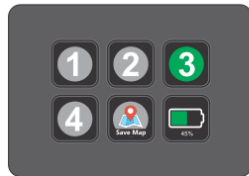


## Program your first locations.

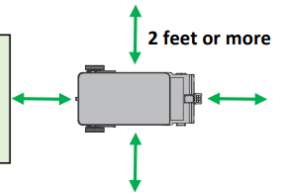
**Note** that you may have a 15-button EZ-Go Navigation Panel (Premium models) or a 6-button EZ-Go Navigation panel (Value models). Instructions use the 6-button, but the programming process is the same for both variations.



Press and hold any un-programmed station button (grey) for 3 seconds until you hear the double-beep sound. Station button will turn green, indicating programming completed.



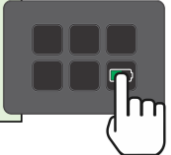
**TIP: For best results, program destinations more than 2 feet from any stationary objects.**



Manually move the cart to a second location you wish to program. Press and hold any un-programmed station button (grey) for 3 seconds until you hear the double-beep sound.



**TIP: If you don't see station icons on your screen, press the battery level button to return to programmable station buttons.**



That's it! You have programmed MARC and can put him to work. Press the station button for each programmed key (in our example 1 and 3) and MARC will travel to the destination programmed for that button.

**For more detailed instructions for using MARC 3 Series in Active Map Mode and Fixed Map Mode, please refer to the User Guide.**



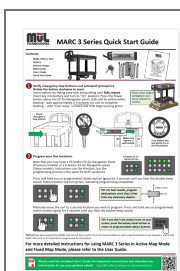
Please read the included User's Guide for important instructions and intended use information to use your product safely! Use QR code to access in documentation.



<https://www.multechnologies.com/documentation>

Revision 210806A

## Documents / Resources



**MUL TECHNOLOGIES MARC 3 Series Promat DX** [pdf] User Guide  
MARC 3 Series Promat DX, MARC 3 Series, Promat DX