




MUDSTUFF 59154
Side Panel Trim



MUDSTUFF 59154 Side Panel Trim Instruction Manual

[Home](#) » [MUDSTUFF](#) » MUDSTUFF 59154 Side Panel Trim Instruction Manual 

Contents

- [1 MUDSTUFF 59154 Side Panel Trim](#)
- [2 Product Information](#)
- [3 Product Usage Instructions](#)
- [4 Tools Required](#)
- [5 Documents / Resources](#)
 - [5.1 References](#)
- [6 Related Posts](#)



MUDSTUFF 59154 Side Panel Trim



Product Information

Specifications:

- Product Name: MUD-UK Side Panels
- Tools Required: Stanley craft knife, de-burring tool, half-round file
- Fitting Time: 1-4 hours

Product Usage Instructions

Preparation:

1. Read through the instructions carefully before starting the fitting process.
2. Gather the necessary tools: Stanley craft knife, de-burring tool, half-round file.

Fitting Process:

1. Remove the plastic cap from the seat-belt bracket to expose the seat-belt fastener.
2. Clean the hardtop side panels thoroughly for better adhesion of foam pads.
3. Fix self-adhesive pads in place on the hardtop side panels.
4. Trim the self-adhesive pad that fits within the front side panel as needed.
5. Trim back the plastic according to the cut lines if your vehicle has a standard full-height loadspace bulkhead.
6. Locate a 12v feed behind the rear right-hand corner panel for LED Lamp power source.
7. Ensure the side panel trim slides behind the headlining, watching out for any wiring behind it.
8. Drill fixing holes for storage net countersunk screw fasteners.
9. Slide the panel into the vehicle, hooking the cutout over the bulkhead and sliding upwards.
10. Ensure the panel sits snug on top of the internal roof gutter lip.
11. Peel back the door seal rubber and fit the trim panel around the front corner of the door opening.

FAQ (Frequently Asked Questions)

1. Q: What tools are required for fitting the MUD-UK Side Panels?

A: You will need a Stanley craft knife, de-burring tool, and a half-round file for the fitting process.

2. Q: How long does it take to fit the side panels?

A: The estimated fitting time is 1-4 hours depending on the options selected.

3. Q: Can I trim the plastic if needed for a better fit?

A: Yes, you can trim the plastic with a sharp knife to achieve a snug and flush fit.

Thank you for purchasing MUD-UK Side Panels

Tools Required

- Sharp knife
- Drill
- 2.5mm drill bit
- File
- 5.5mm drill bit

- Small Hammer
- Pozidrive/Philips headed screwdriver
- Bradawl

This kit will contain the following

- 2 x MUD-UK Side Panels
- 4 x Self adhesive foam pads
- A selection of two different size plastic fixings
- 1 x MUD-UK logo badge

Estimated fitting time 1-5 -4 hrs depending on options selected

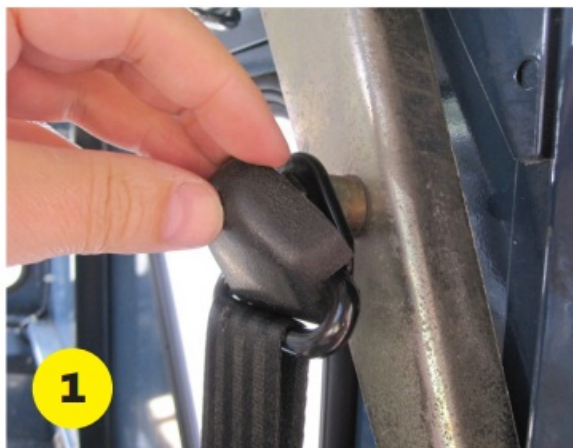
There may be some trimming of the plastic moulding required in order to fit this product.

We recommend a 'Stanley' type craft knife or de-burring tool for plastic trimming. A half-round file would be useful too. Read through these instructions first before attempting the trim fitting. If you are in any doubt about any element of these instructions, contact MUD-UK or refer to a professional installer.

- Remove the plastic cap from the seat-belt bracket to expose the seat-belt fastener.

Early Style Cap

•



Remove the plastic cap from the seat-belt bracket to expose the seat-belt fastener.

Late Style Cap

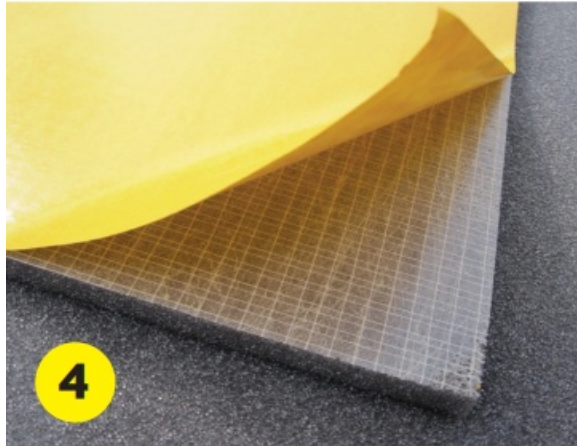
•



Remove seat-belt bolt with 11/16 or 17mm spanner or socket.



- Thoroughly clean the hardtop side panels so that the self adhesive foam pads will stick. Peel away the backing.



- Fix self-adhesive pads in place on the hardtop side panels.



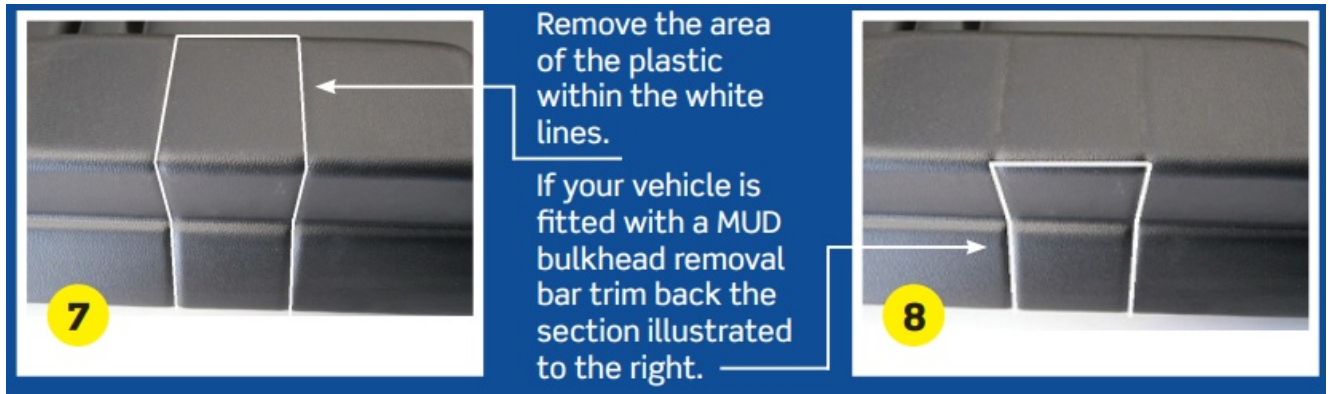
- The self-adhesive pad that fits within the front side panel will need reducing in length by approximately 10mm. Cut to size before removing the backing

•



On a vehicle with a standard full height loadspace bulkhead-trim back the plastic as illustrated on the right.

Follow the cut lines moulded into the plastic.



- Try to achieve as snug fit as possible around the bulkhead. A file is useful for tidying up the cut edges of the plastic.



- Use a 2.5mm drill to drill the fixing holes for the storage net countersunk screw fasteners.



- MUD Fitting TIP! Locate a 12v feed behind the rear right hand corner panel to use as a power source for LED Lamps.



- Slide the panel into the vehicle. Hook the cut out over the bulkhead and slide panel upwards. You may have to bend the panel to manoeuvre it around the door pillar.



- Ensure the side panel trim slides behind the headlining. Watch out for any wiring behind the headlining.



- The panels are a tight squeeze over the spot welds in the rear corner.



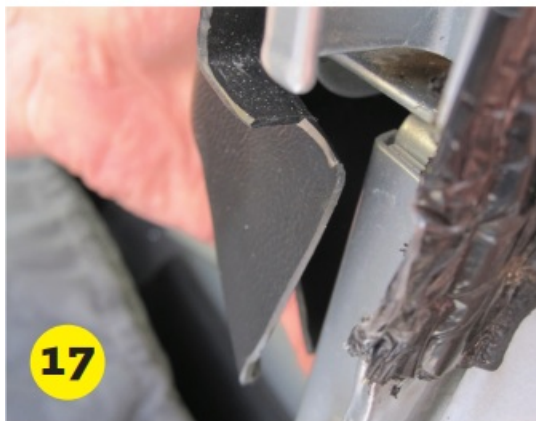
- Gently prise the panel over the spot welds.



- The panel needs to sit down snug on top of the internal roof gutter lip.



- Peel back the door seal rubber and ensure the trim panel fits around the front corner of the door opening.



- Trim the plastic with a sharp knife if necessary to achieve a snug, flush fit.



- Replace the door seal rubber.



- Locate the recessed indicator marks for the fixing positions and drill fixing holes using a 5.5mm drill bit.



- Use the small fir tree fasteners for the upper gutter rail fixings.



- A gentle tap with a hammer may be needed to push the fastener fully home.



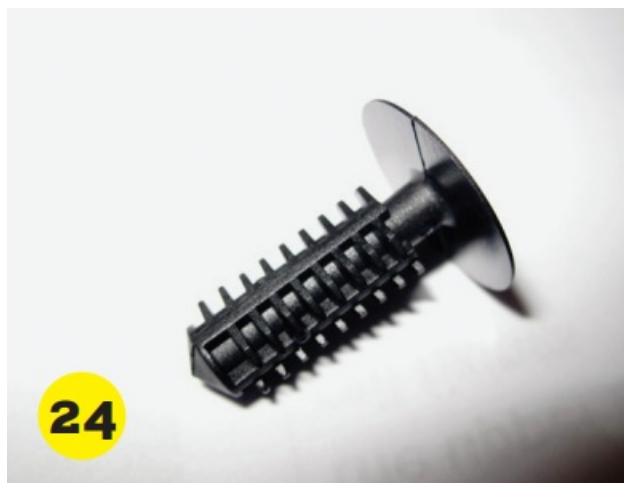
- Ensure the trim is pushed up snug against the body capping before drilling the lower fixing holes.



- You will find it easier to drill a small pilot hole for the lower fixings first before drilling the 5.5mm fixing holes.



- The large fir-tree fasteners are used in the lower section of the trim.



- The large fir-tree fasteners can be fixed in place with a gentle tap with a hammer.



- Drill the front fasteners in place into the B pillar on the hardtop using a 5.5mm drill bit.



- Fix into place using the smaller screw/rivet fasteners. These fasteners can also be tapped into place with a hammer.



- Replace the seatbelt fixing and trim cap.



JOB DONE!



If you have a Land Rover Dog Guard fitted additional trimming of the plastic is required as illustrated below.



Tel: +44 (0) 1422 881951
Email: mud@mudstuff.co.uk
Web: www.mudstuff.co.uk

Documents / Resources



[MUDSTUFF 59154 Side Panel Trim](#) [pdf] Instruction Manual
59154, 59154 Side Panel Trim, Side Panel Trim, Panel Trim, Trim

References

- [M MUD-UK](#)
- [User Manual](#)

[Manuals+](#), [Privacy Policy](#)

This website is an independent publication and is neither affiliated with nor endorsed by any of the trademark owners. The "Bluetooth®" word mark and logos are registered trademarks owned by Bluetooth SIG, Inc. The "Wi-Fi®" word mark and logos are registered trademarks owned by the Wi-Fi Alliance. Any use of these marks on this website does not imply any affiliation with or endorsement.