



MTI Baths MBISC6036 Integral Skirted Rectangular Tub Instructions

[Home](#) » [MTI Baths](#) » MTI Baths MBISC6036 Integral Skirted Rectangular Tub Instructions 

Contents

- [1 MTI Baths MBISC6036 Integral Skirted Rectangular Tub](#)
- [2 PRODUCT OVERVIEW](#)
- [3 Package List](#)
- [4 Options](#)
- [5 Accessories.](#)
- [6 Documents / Resources](#)
- [7 Related Posts](#)



MTI Baths MBISC6036 Integral Skirted Rectangular Tub



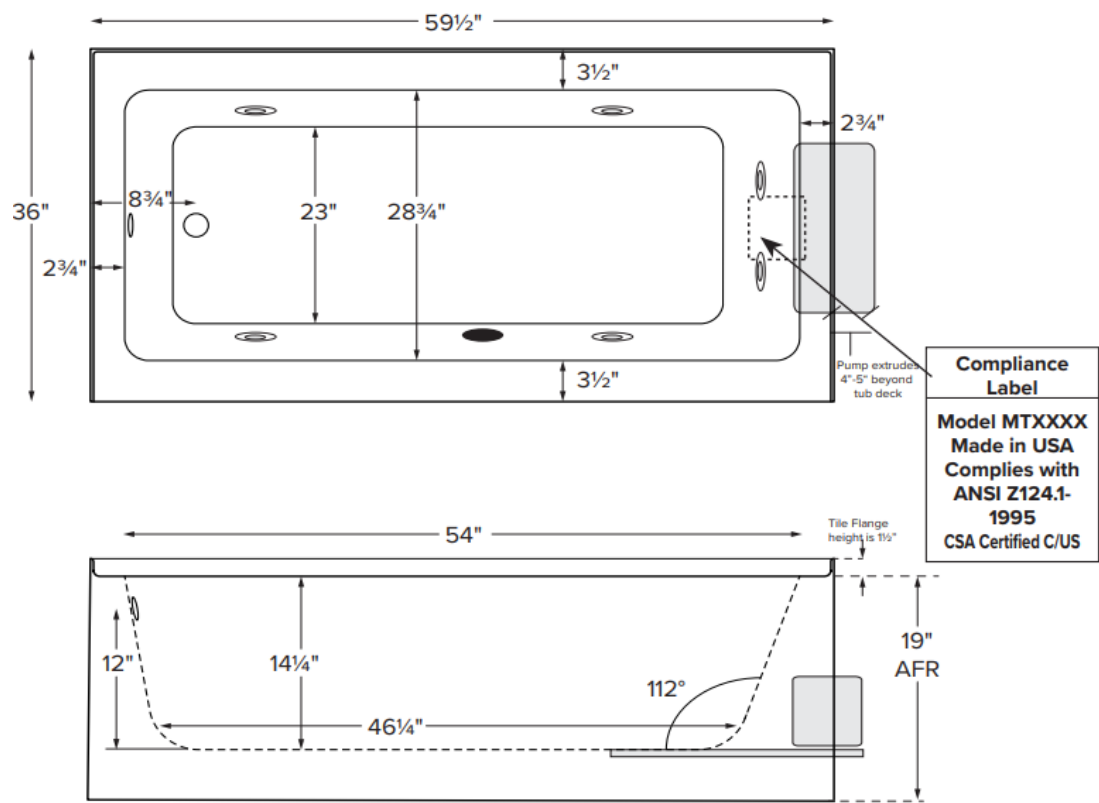
PRODUCT OVERVIEW

- **Installation:** Alcove
- **Material:** Acrylic
- **Plumbed Weight:** 135 lbs / 61 kg
- **Soaker Weight:** 115 lbs / 52 kg
- **Average Fill:** 41 gal to above jet level
- **Maximum Fill:** 51 gal to overflow

Package List

Package	Package Content	Part #
Soaker	Soaking bath – No jets. Integral front skirt, 3-sided integral tile flange and textured bottom.	MBSISC6036A
Air Bath	12 air jets, heated air blower, pre-leveled foam base, textured bottom, integral front skirt and 3-sided tile flange. pre-leveled foam base increases overall tub height 2"-3"	MBAISC6036A
Whirlpool	6 point-massage jets, 1-bhp pump, integral front skirt, 3-sided integral tile flange and textured bottom.	MBWISC6036A

Shown with Whirlpool Package



Important Ordering and Installation Information

- Before ordering or installing, consider access to equipment.
- Integral flat front skirt is not removable.
- Must specify left- or right-hand drain when ordering.
- Use proper bedding compound to fully level and support the tub.
- Tubs equipped with an air system or factory installed pre-leveled foam base are designed to install directly onto a flat level subfloor.
- Location of all therapy components is predetermined and cannot be changed.
- Suction and control locations may vary.
- Options listed cannot be combined with Designer Collection options.
 - Before discarding tub crate, check for accessories that may be packaged inside.
 - All product measurements are +1/2".
 - Specifications and configurations are subject to change without notice.
 - Measurements herein supersede all others published prior to publication date below.

Options

Must be ordered at time of purchase.

- **Standard** White (no charge)
- **Color Upgrade:** Biscuit (MTISCOLOR)
- **Quick Ship / Priority**
 - Soaker & Whirlpool (QSHIPMTIS)
 - Airbath (QSHIPMTISA)
- **Inline Heater**
 - For Whirlpool (HTRMTIS) uses existing pump
 - For Soaker & Air Bath (MBHTISOAK) heater with recirculating pump

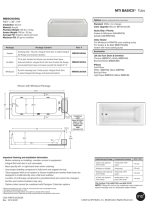
Accessories.

- **Lift and Turn Drain & Overflow**
 - Chrome (MBWOC), White (MBWOW),
 - Brushed Nickel (MBWOBN)
- **Pillows**
 - Soft Pillow
 - White (MBPSW) Black (MBPSB)
 - Roll-Up Pillow
 - Light Aqua (MBPRUC) Black (MBRUB)

Hydrotherapy Package	Components Included	GFCI / 110V
Soaker with Optional Inline Heater	½-bhp pump, inline heater	1-15 amp
Whirlpool or Air Bath	1-bhp pump	1-15 amp
Whirlpool with Optional Inline Heater	1-bhp pump, inline heater	1-20 amp
Air Bath with Optional Inline Heater	heated blower, ½-bhp pump, inline heater	2-15 amp

NOTE: Filling this tub to the maximum may require an above average size or dedicated water heater.

Documents / Resources

	<p>MTI Baths MBISC6036 Integral Skirted Rectangular Tub [pdf] Instructions MBISC6036, Integral Skirted Rectangular Tub, Skirted Rectangular Tub, Integral Rectangular Tub, Rectangular Tub, Tub</p>
---	--