



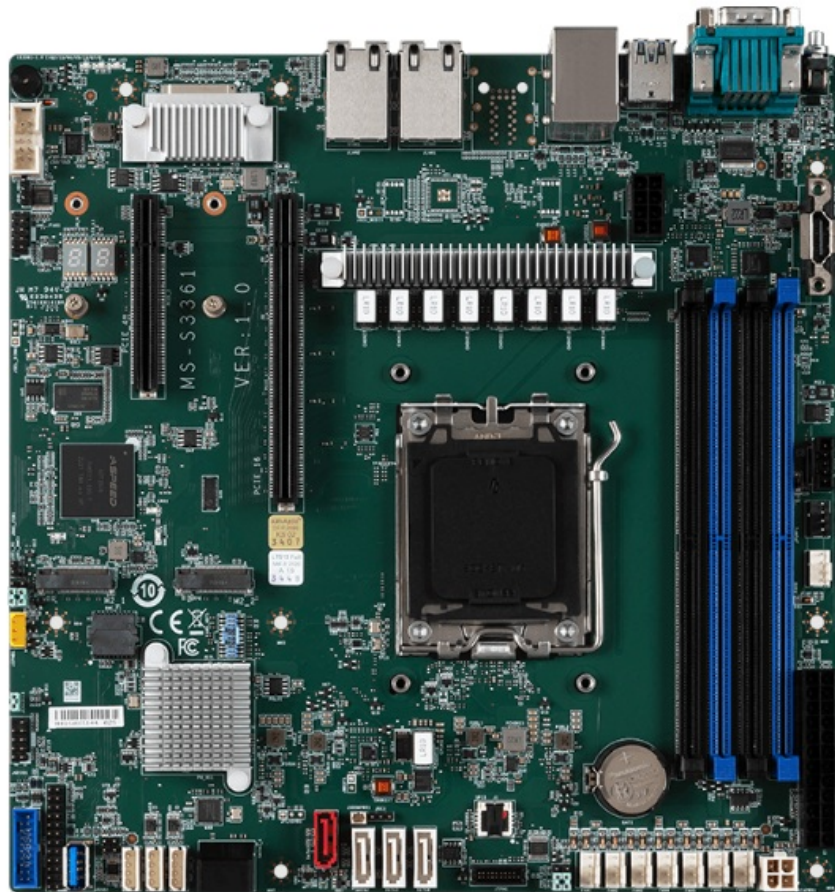
[Home](#) » [MSI](#) » **msi S1102, D3051 CPU Single AMD Ryzen Processor User Guide** 

Contents [[hide](#)]

- [1 msi S1102, D3051 CPU Single AMD Ryzen Processor](#)
- [2 DIMENSION](#)
- [3 Front Panel Header](#)
- [4 CPU and Cooler Installation](#)
- [5 Connectors, Jumpers and LED Indicators](#)
- [6 Recommended Memory Population](#)
- [7 FAQ](#)
- [8 Documents / Resources](#)
 - [8.1 References](#)



msi S1102, D3051 CPU Single AMD Ryzen Processor

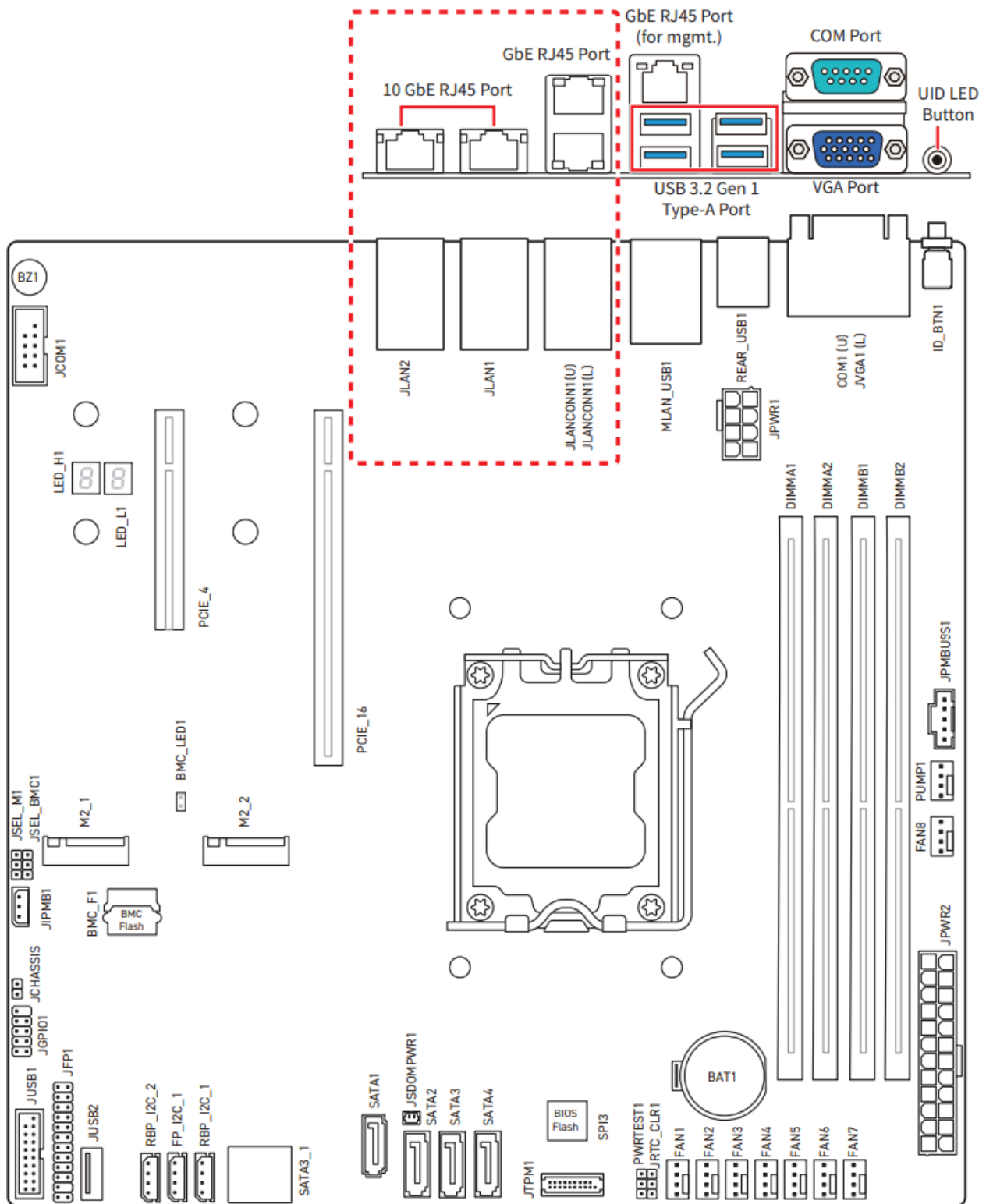


Specifications:

- CPU: Single AMD Ryzen™ 7000/9000 Series and EPYCTM 4004/4005 Series Processor
- Memory: DDR5 ECC/non-ECC UDIMMs, supporting speeds up to 5600 MT/s (1DPC) and 3600 MT/s (2DPC)
- Connectors: Various connectors including JPWR1, JPWR2, JSDOMPWR1, SATA1~4, SATA3_1, M2_1~2, PCIE_1, PCIE_2, FAN1~8, PUMP1, JFP1, JTPM1, JGPIO1, JPMBUS1, etc.

DIMENSION

LAN ports in the red dashed area vary with SKUs; please refer to the specifications for more details.



CPU

Single AMD Ryzen™ 7000/9000 Series and EPYC™ 4004/4005 Series Processor

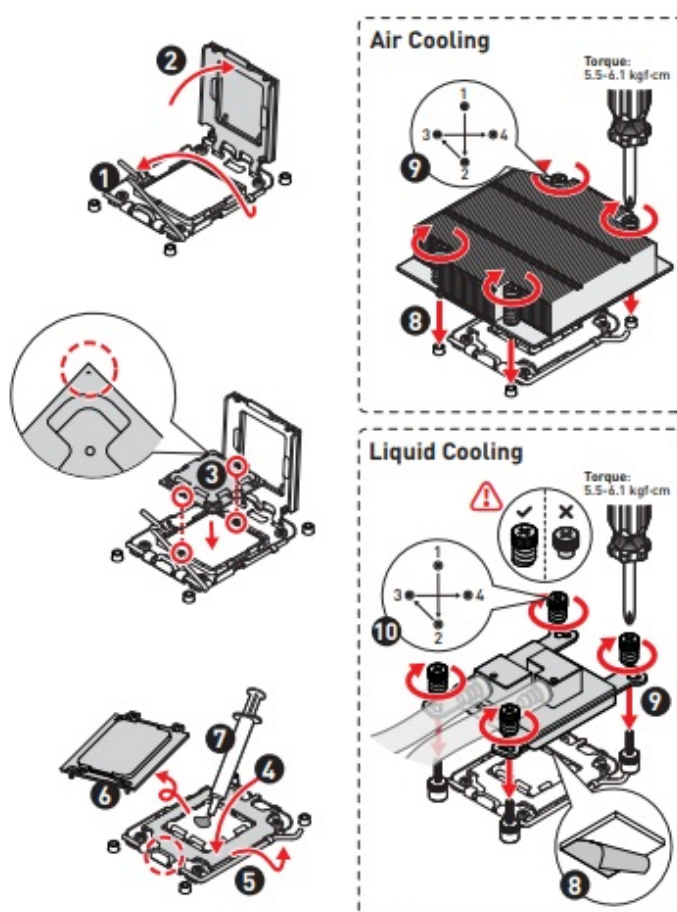
Front Panel Header

JFP1								2	1	23	24
1	PWR_LED+	2	FP_PWR	13	PWR_BTN_GND	14	NIC#1_ACT_LED-				
3	No pin	4	SYS_ID_LED+	15	RST_BTN	16	SMB_SDA				
5	PWR_LED-	6	SYS_ID_LED-	17	RST_BTN_GND	18	SMB_SCL				
7	HDD_ACT_LED+	8	SYS_FAULT_LED1-	19	SYS_ID_BTN	20	CHASSIS_INTRUSION				
9	HDD_ACT_LED-	10	SYS_FAULT_LED2-	21	WIRE_TEMP_SENSOR	22	NIC#2_ACT_LED+				
11	PWR_BTN	12	NIC#1_ACT_LED+	23	NMI_BTN	24	NIC#2_ACT_LED-				

Important

The server board is equipped with one or two types of NIC chips for different SKUs. The first type, NIC#1, is controlled by Intel® I210-AT and manages 1GbE RJ45 ports (JLANCONN1). The second type, NIC#2, is controlled by Intel® X710-AT2 and manages 10GbE RJ45 ports (JLAN1~2).

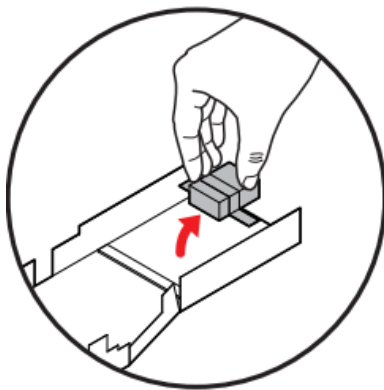
CPU and Cooler Installation



Important

- For proper operation of the liquid cooler, replace non-spring screws with spring screws.
- Following the S1102-01 heatsink installation, remove the polystyrene cube on the

backside of the air duct before proceeding with air duct installation.



Connectors, Jumpers and LED Indicators

Name	Description
JPWR1	8-pin 12V power connector
JPWR2	24-pin main power connector
JSDOMPWR1	2-pin SATA DOM power connector
SATA1~4	SATA 3.0 6Gb/s ports
SATA3_1	SATA 2.0 3Gb/s ports
M2_1~2	M.2 slots (M Key, PCIe 4.0, 22110/ 2280)
PCIE_1	PCIe 5.0 x 16 slot (Gen 5 x 16 signal from CPU)
PCIE_2	PCIe 4.0 x 8 slot (Gen 4 x 4 signal from CPU)

Name	Description
FAN1~8, PUMP1	Fan connectors
JFP1	Front panel header
JTPM1	SPI TPM header

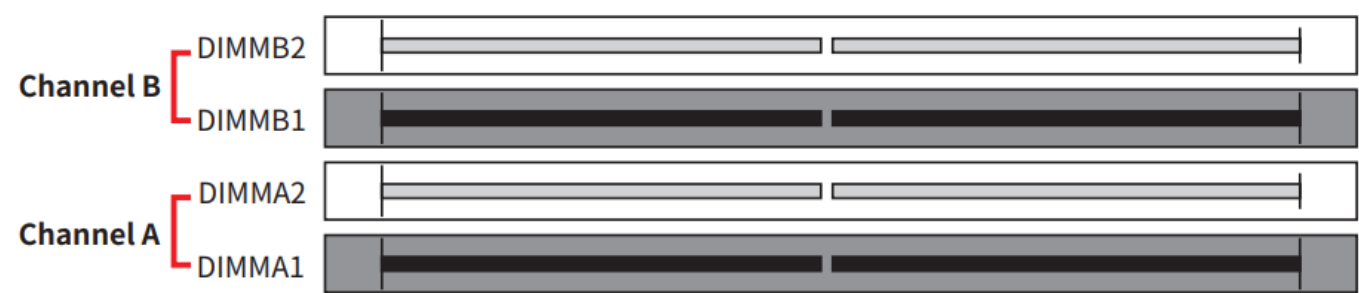
JGPIO1	GPIO header
JPMBUS1	PM Bus header
JCHASSIS1	Chassis intrusion header
JIPMB1	IPMB header
FP_I2C_1, RBP_I2C_1~2	I2C headers
JCOM1	COM port header
JUSB1	USB 3.2 Gen 1 header
JUSB2	USB 3.2 Gen 1 Type-A port
MLAN_USB1	GbE RJ45 port (for mgmt.) (upper, on rear side)
	USB 3.2 Gen 1 Type-A ports (lower, on rear side)
REAR_USB1	USB 3.2 Gen 1 Type-A ports (on rear side)
JLAN1~2*	10 GbE RJ45 ports (on rear side)
JLANCONN1 (U, L)*	GbE RJ45 ports (on rear side)
COM1	COM port (on rear side)
JVGA1	VGA port (on rear side)
JSEL_M1	M2_1 / PCIE_2 select jumper (default set to pin 1-2, M2_1 enabled)
JSEL_BMC1	BMC select jumper (default pin 1-2, using CPU)
PWRTEST1	Power test jumper (default pin 1-2, normal)
JRTC_CLR1	CMOS clear jumper (default pin 1-2 normal)
BMC_LED1	BMC Heartbeat LED

LED_H1, LED_L1	Port 80 Debug LEDs
----------------	--------------------

*LAN ports vary with SKUs, please refer to the specifications for more details.

Memory

The server board offers compatibility with DDR5 ECC/ non-ECC UDIMMs, supporting memory speeds up to 5600 MT/s (1DPC) and 3600 MT/s (2DPC).



Recommended Memory Population

Quantity of DIMMs		1	2		3	4
Channel B	DIMMB2		V	V	V	V
	DIMMB1			V	V	V
Channel A	DIMMA2	V	V	V	V	V
	DIMMA1			V	V	V
"V" indicates a populated DIMM slot.						

Important

- Only support UDIMM.
- Paired memory installation for Max performance.
- There should be at least 1 DDR5 DIMM populated.
- If only 1 DIMM is populated in a channel, then populate it in the DIMMA2 slot.
- Populate the same DIMM type in each channel, specifically: 1. Use the same DIMM size; 2. Use the same number of ranks per DIMM.
- We don't suggest other memory installation.

FAQ


- **Q: What type of memory does the server board support?**

A: The server board supports DDR5 ECC/non-ECC UDIMMs with memory speeds up to 5600 MT/s (1DPC) and 3600 MT/s (2DPC).

• **Q: How should I populate the memory slots for optimal performance?**

A: Populate the memory slots according to the recommended memory population guidelines provided in the manual. Ensure paired memory installation for maximum performance and follow the guidelines for DIMM placement.

Documents / Resources

	msi S1102, D3051 CPU Single AMD Ryzen Processor [pdf] User Guide S1102-01, S336-S1102-D3051-v2.0-QG, S1102 D3051 CPU Single AMD Ryzen Processor, S1102 D3051, CPU Single AMD Ryzen Processor, Single AMD Ryzen Processor, AMD Ryzen Processor, Ryzen Processor, Processor
---	---

References

- [User Manual](#)

MSI
AMD Ryzen Processor, CPU Single AMD Ryzen Processor, MSi, Processor, Ryzen Processor, S1102 D3051, S1102 D3051 CPU Single AMD Ryzen Processor, S1102-01, S336-S1102-D3051-v2.0-QG, Single AMD Ryzen Processor

Leave a comment

Your email address will not be published. Required fields are marked *

Comment *

Name

Email

Website

☐ Save my name, email, and website in this browser for the next time I comment.

Post Comment

Search:

e.g. whirlpool wrf535swhz

Search

[Manuals+](#) | [Upload](#) | [Deep Search](#) | [Privacy Policy](#) | [@manuals.plus](#) | [YouTube](#)

This website is an independent publication and is neither affiliated with nor endorsed by any of the trademark owners. The "Bluetooth®" word mark and logos are registered trademarks owned by Bluetooth SIG, Inc. The "Wi-Fi®" word mark and logos are registered trademarks owned by the Wi-Fi Alliance. Any use of these marks on this website does not imply any affiliation with or endorsement.