



MSI GTX1050 (V809-2404R) Ti 4GB GDDR5 Graphics Card Quick User Guide

[Home](#) » [Support](#) » MSI GTX1050 (V809-2404R) Ti 4GB GDDR5 Graphics Card Quick User Guide 

Contents

- [1 MSI GTX1050 \(V809-2404R\) Ti 4GB GDDR5 Graphics Card](#)
- [2 Package Contents](#)
- [3 System Requirements](#)
- [4 Auxiliary Tools](#)
- [5 Hardware Installation](#)
- [6 Software Installation](#)
- [7 FAQ's](#)
- [8 Related Posts](#)



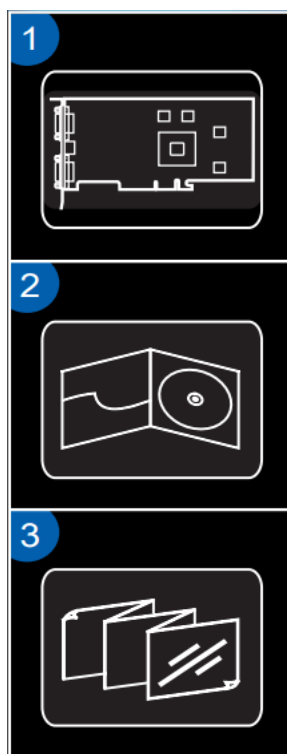
MSI GTX1050 (V809-2404R) Ti 4GB GDDR5 Graphics Card



Package Contents

(Consult your agent if anything is missing or damaged.)

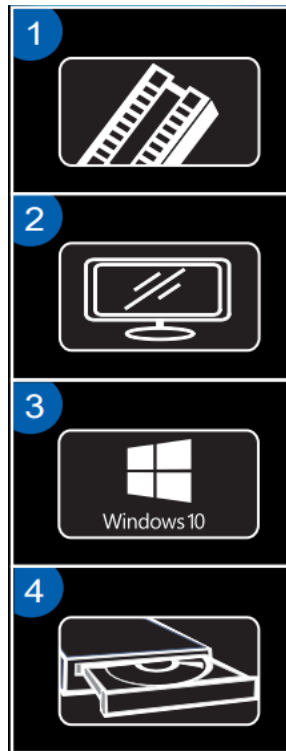
1. Graphics Card
2. Driver CD
3. User's Manual (depends on the product)



System Requirements

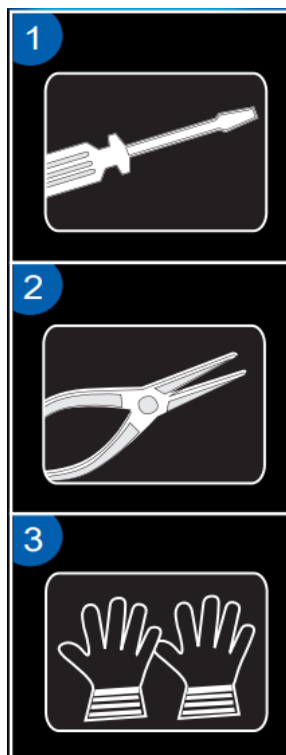
1. **Expansion Slot:** Motherboard with one or above PCI Express x16 slot

2. **Monitor:** With an input connector equivalent to the output connector of your graphics card.
3. **Operation System:** Windows® 7 or later (depends on the product)
4. Optical Drive device



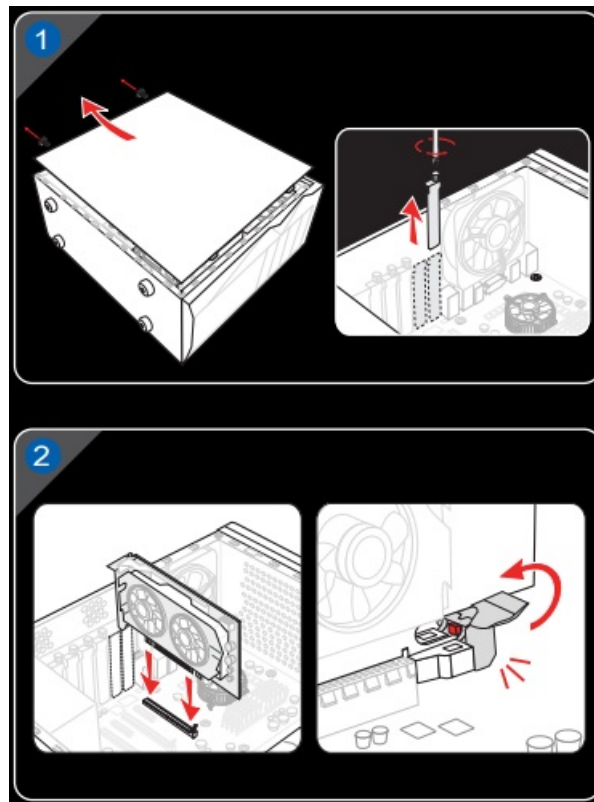
Auxiliary Tools

1. **Cross-screwdriver:** This can be used to do most of the installation. Choosing one with a magnetic head would be better.
2. **Pliers:** This can be used as an auxiliary tool to pull out the power connectors or remove the brackets.
3. **Rubber gloves:** This can prevent you from being incised and suffering the static charge.

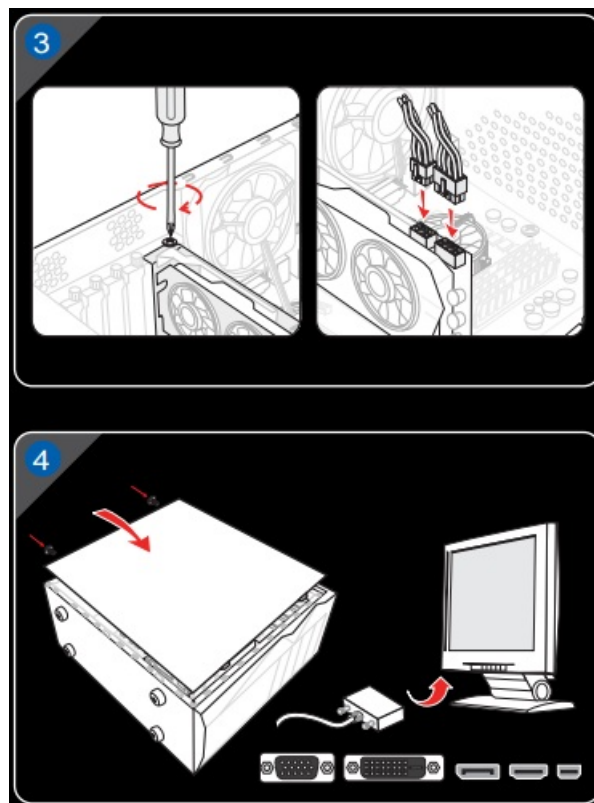


Hardware Installation

1. Turn off the power and remove the case of your computer. Remove the bracket which may obstruct your Graphics card.
2. Put the card directly over the PCI EXPRESS slot and press one end of the card into the slot first. Gently but firmly press the other end until it is fully seated in the slot. Secure the card with a bracket screw.



3. Connect to 6/8-pin power connectors (if any).
4. Replace the case and connect the output and the monitor with the display cable.



Software Installation

1. Turn on your computer.

2. Insert the Driver CD into the optical drive device. The Autorun program will start the Setup program, and the setup screen will be shown as Step 3. If, on your computer, the Autorun program does not execute automatically, please Enable the auto-detect function of the optical drive device from the Control panel. Or find and run the setup.exe file manually from the Driver CD.
3. Click NVIDIA®/AMD® drivers. The program will find a proper driver for your Graphics card.
4. After restarting the computer, you can install the optional software from the Driver CD provided such as Microsoft DirectX, Adobe® Acrobat Reader, or related links.
 - Insert the Driver CD into the optical drive device, and start the Setup program.
 - Choose the Utility tab on the setup screen.
 - Click the software button that you want to install, then follow the on-screen instructions to complete the installation.
5. Since our products are under continual improvement, there may be a later version of the driver and BIOS for your purchase. Simply click to select the linkage and browse the website as you usually do.
 - Insert the Driver CD into the optical drive device, and start the Setup program.
 - Choose the Website tab on the setup screen.
 - Click the corresponding button to launch your browser and access the website.

FAQ's

What are the key specifications of the MSI GTX1050 Ti 4GB graphics card?

The MSI GTX1050 Ti 4GB graphics card features 4GB of GDDR5 video memory, a base clock speed of around 1290MHz, a boost clock speed of approximately 1392MHz, and 768 CUDA cores. It also supports DirectX 12 and has a maximum resolution of 7680x4320 pixels.

Is the GTX1050 Ti compatible with my computer?

The GTX1050 Ti is compatible with most modern computers that have a PCIe x16 slot available for installing the graphics card. It is important to ensure that your power supply has sufficient wattage and the necessary PCIe power connectors to support the card.

Does the MSI GTX1050 Ti require external power?

No, the MSI GTX1050 Ti graphics card does not require external power. It draws power directly from the PCIe x16 slot on the motherboard, making it convenient for systems with limited power supply connections.

Can the GTX1050 Ti handle gaming at 1080p resolution?

Yes, the GTX1050 Ti is capable of handling gaming at 1080p resolution. It is suitable for playing many modern games at medium to high settings, depending on the specific game's requirements.

Does the GTX1050 Ti support multiple monitors?

Yes, the GTX1050 Ti supports multiple monitors. It typically has multiple display outputs, including DisplayPort, HDMI, and DVI ports, allowing you to connect multiple monitors simultaneously.

Does the MSI GTX1050 Ti support virtual reality (VR) gaming?

While the GTX1050 Ti can handle some VR games and experiences, it may not provide the optimal performance required for high-end VR gaming. It is better suited for entry-level VR applications.

What power supply requirements does the GTX1050 Ti have?

The power supply requirements for the GTX1050 Ti are relatively low compared to more powerful graphics cards. It typically requires a minimum of a 300W power supply with at least one available PCIe power connector.

Is the MSI GTX1050 Ti compatible with my operating system?

The MSI GTX1050 Ti is compatible with various operating systems, including Windows 10, Windows 8/8.1, and Windows 7. It is also compatible with Linux-based operating systems.

Can I overclock the GTX1050 Ti for better performance?

Yes, the GTX1050 Ti can be overclocked to achieve better performance. However, the amount of overclocking potential may vary between individual graphics cards, and it is essential to follow proper overclocking procedures and ensure adequate cooling.

Does the GTX1050 Ti support hardware acceleration for video encoding/decoding?

Yes, the GTX1050 Ti supports hardware acceleration for video encoding and decoding. It utilizes technologies such as NVIDIA NVENC and NVDEC to offload video processing tasks from the CPU, resulting in improved performance and efficiency in applications that utilize these capabilities.

Does the MSI GTX1050 Ti require any specific drivers or software?

Yes, to ensure optimal performance and compatibility, it is recommended to install the latest NVIDIA graphics drivers for the GTX1050 Ti. These drivers can be downloaded from the NVIDIA website.

Does the GTX1050 Ti support multi-GPU configurations?

No, the GTX1050 Ti does not support multi-GPU configurations such as NVIDIA SLI. If you require multi-GPU capabilities, you would need to consider higher-end graphics card models.

Download The PDF Link: [MSI GTX1050 \(V809-2404R\) Ti 4GB GDDR5 Graphics Card Quick User Guide](#)