



msi Mag Coreliquid 360r V2 Liquid CPU Cooler User Guide

[Home](#) » [MSI](#) » msi Mag Coreliquid 360r V2 Liquid CPU Cooler User Guide 

Contents

- [1 msi Mag Coreliquid 360r V2 Liquid CPU Cooler](#)
- [2 Packing Contents](#)
- [3 Installation](#)
- [4 Connection](#)
- [5 Download](#)
- [6 Software user guide](#)
- [7 CE Conformity](#)
- [8 FCC-B Radio Frequency Interference Statement](#)
- [9 WEEE Statement](#)
- [10 Green Product Features](#)
- [11 Environmental Policy](#)
- [12 Copyright and Trademarks Notice](#)
- [13 Technical Support](#)
- [14 Documents / Resources](#)
 - [14.1 References](#)
- [15 Related Posts](#)

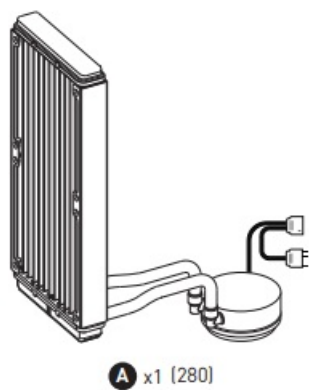
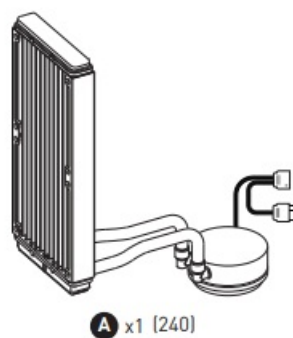
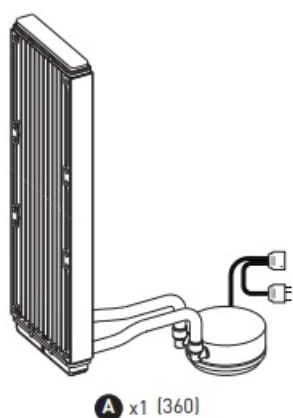


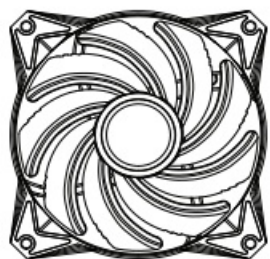
msi Mag Coreliquid 360r V2 Liquid CPU Cooler



The warranty term differs from one region to another. If you would like to verify the warranty term of the product bought, please kindly contact our local offices.

Packing Contents

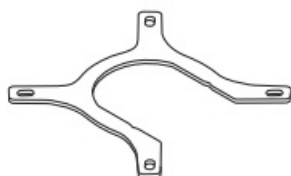




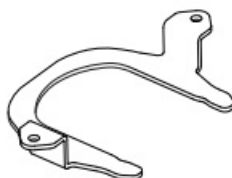
B x3 [360]
x2 [240]



B x2 [280]



C x1



D x1



E x1 [360]



F x1



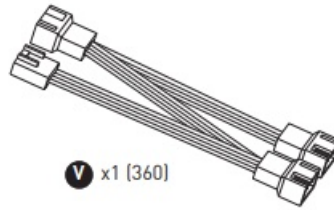
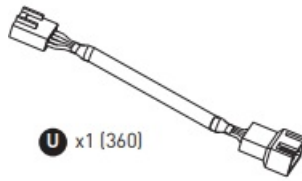
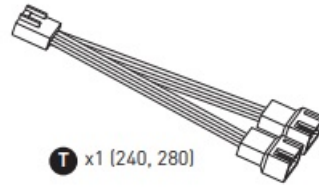
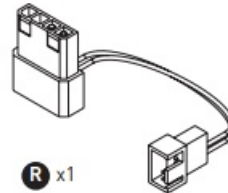
G x1



H x8 [240, 280]
x12 [360]

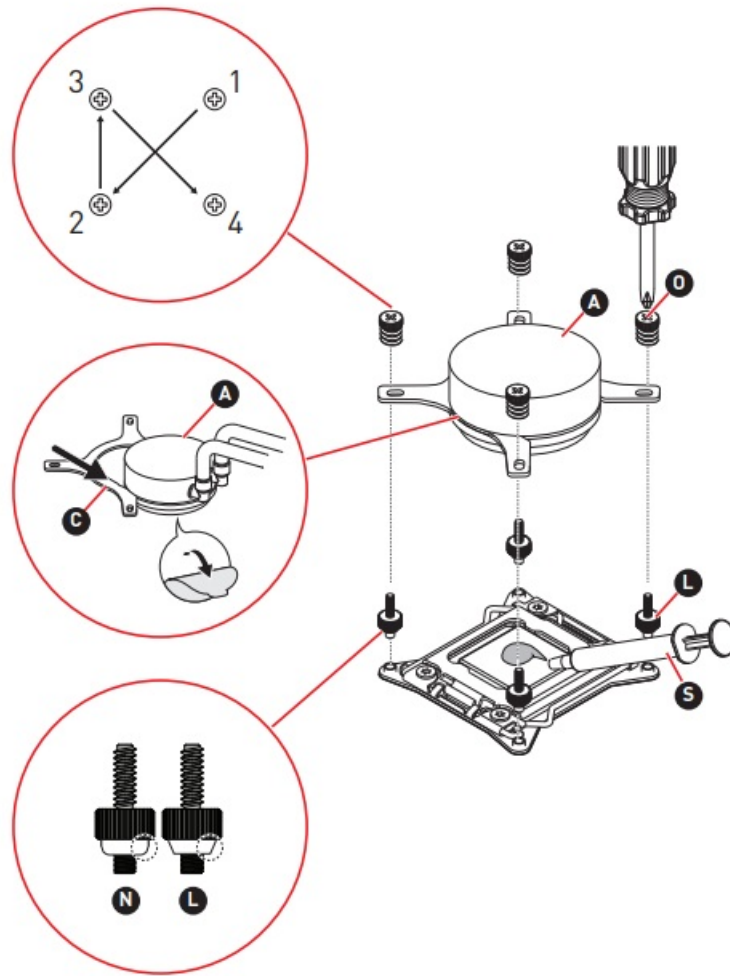


I x8 [240, 280]
x12 [360]

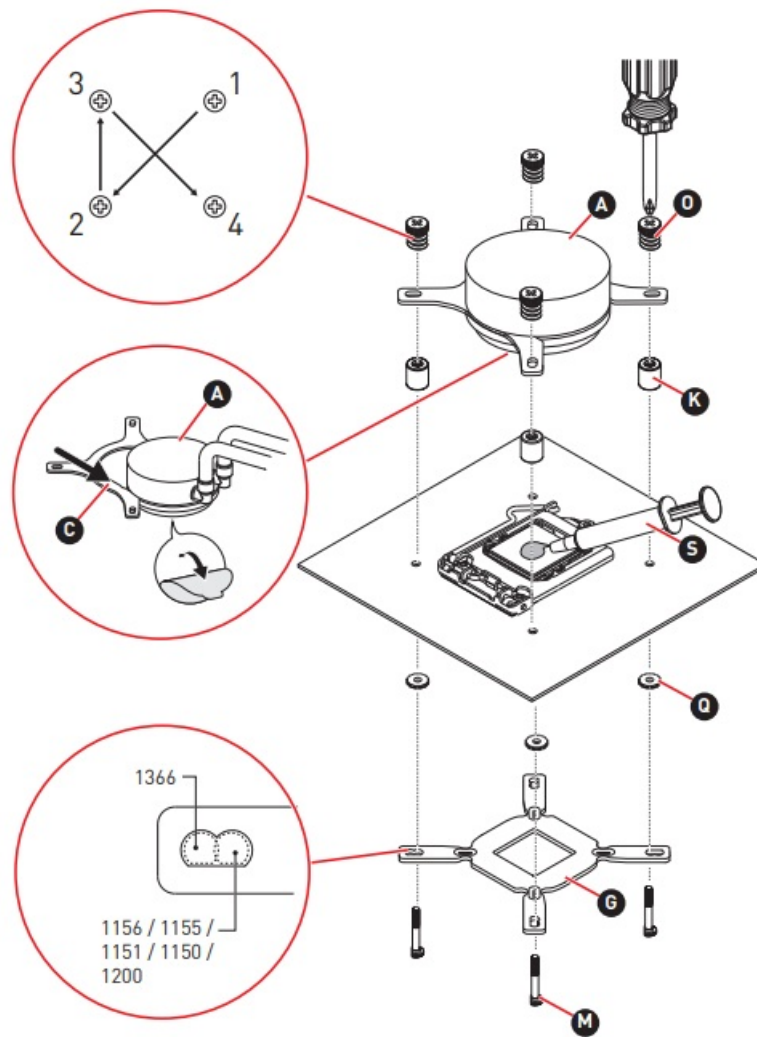


Installation

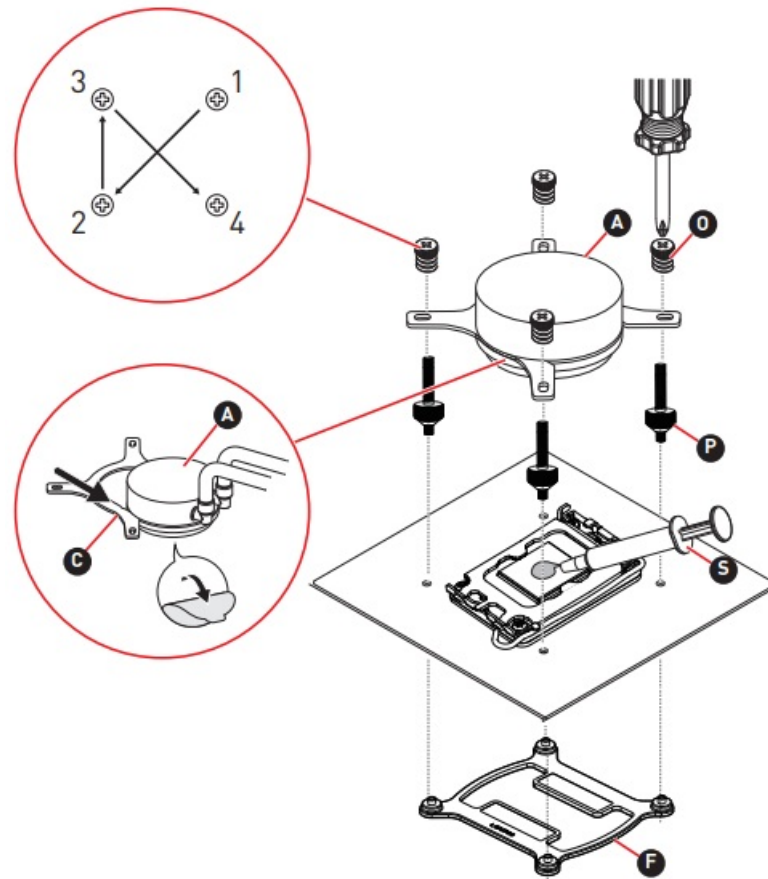
Intel 2066 \ 2011 CPU



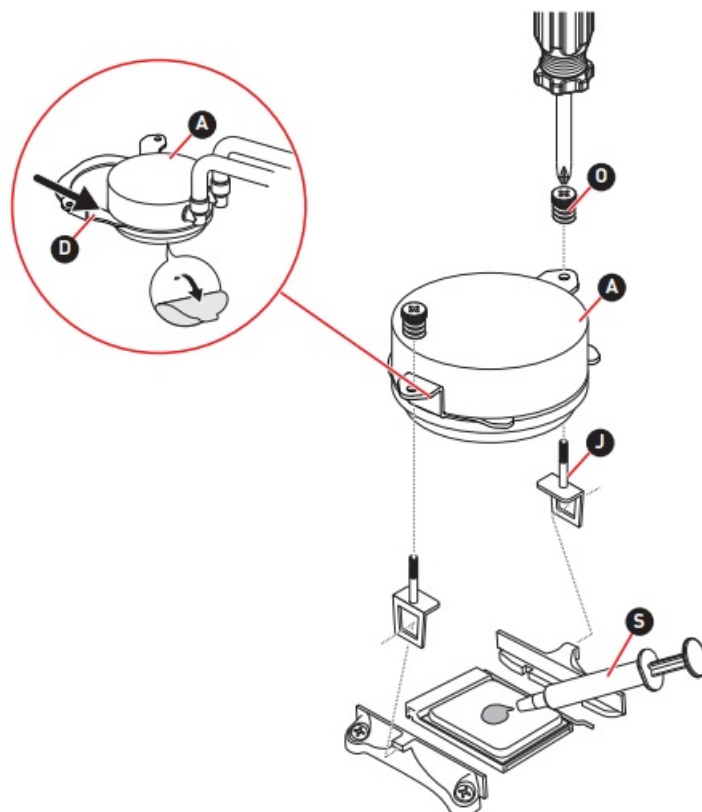
Intel 1156 \ 1155 \ 1151 \ 1150 \ 1200 \ 1366 CPU

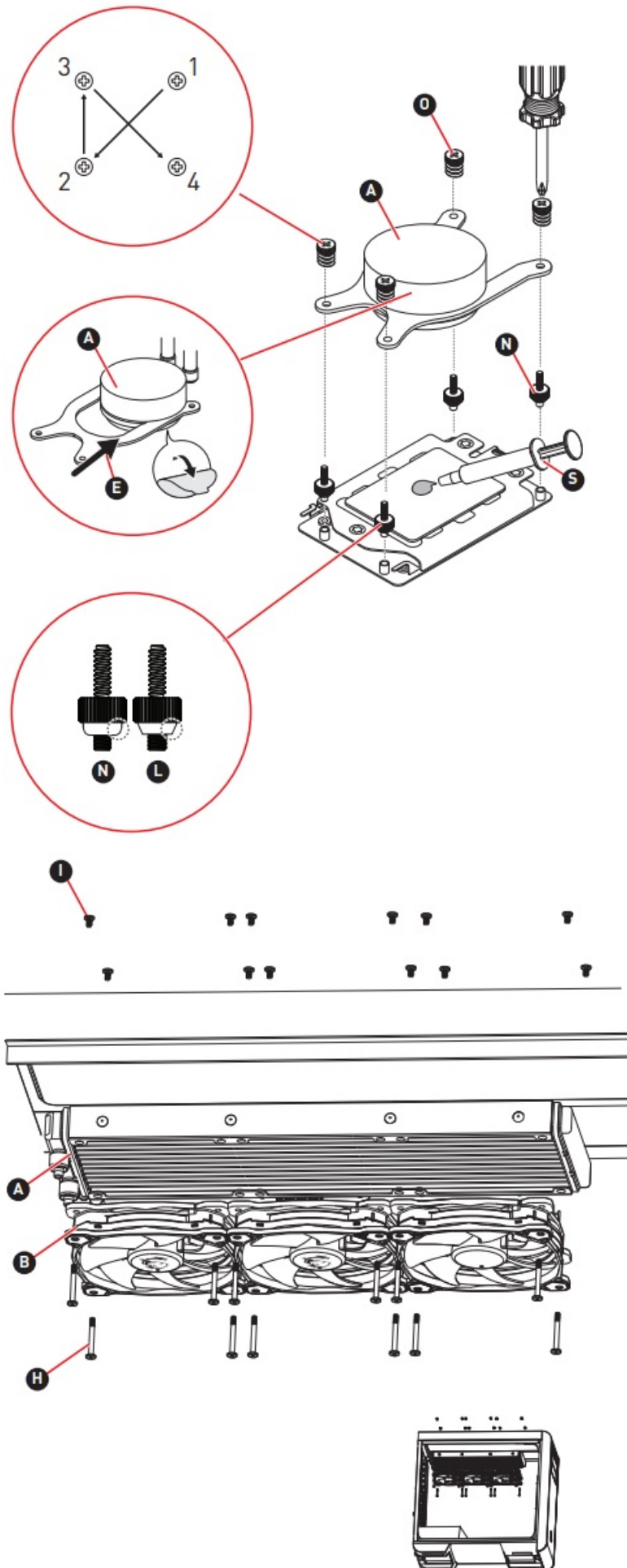


Intel 1700 CPU

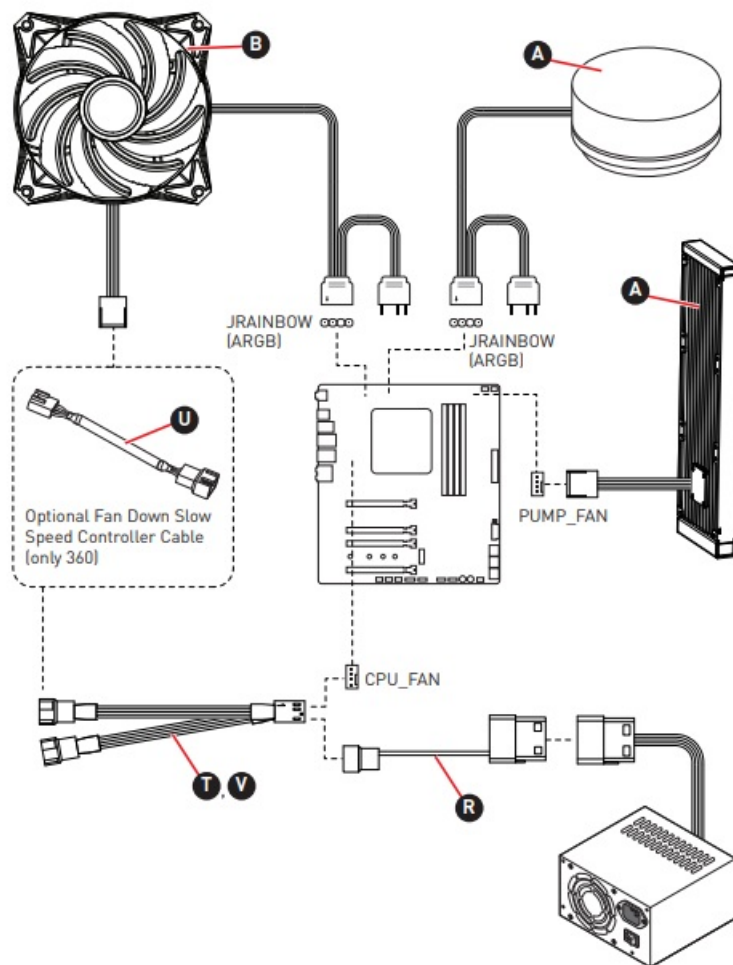


AMD AM4 \ AM3 CPU





Connection



Download

<https://msi.gm/DC-manual>

Software user guide

<http://download.msi.com/manual/mb/MSICENTER.pdf>

CE Conformity

Products bearing the CE marking comply with one or more of the following EU Directives as may be applicable:

- RED 2014/53/EU; Low Voltage Directive 2014/35/EU; EMC Directive 2014/30/EU; RoHS Directive 2011/65/EU.
- Compliance with these directives is assessed using applicable European Harmonized Standards.
- The point of contact for regulatory matters is MSI,
- MSI-NL Eindhoven 5706 5692 ER Son.

FCC-B Radio Frequency Interference Statement

This equipment has been tested and found to comply with the limits for a Class B digital device, pursuant to Part 15 of the FCC Rules. These limits are designed to provide reasonable protection against harmful interference in a

residential installation. This equipment generates, uses and can radiate radio frequency energy and, if not installed and used in accordance with the instruction manual, may cause harmful interference to radio communications. However, there is no guarantee that interference will not occur in a particular installation. If this equipment does cause harmful interference to radio or television reception, which can be determined by turning the equipment off and on, the user is encouraged to try to correct the interference by one or more of the measures listed below:

- Reorient or relocate the receiving antenna.
- Increase the separation between the equipment and receiver.
- Connect the equipment into an outlet on a circuit different from that to which the receiver is connected.
- Consult the dealer or an experienced radio\television technician for help.

Notice 1

The changes or modifications not expressly approved by the party responsible for compliance could void the user's authority to operate the equipment.

Notice 2

Shielded interface cables and AC power cord, if any, must be used in order to comply with the emission limits. This device complies with Part 15 of the FCC Rules. Operation is subject to the following two conditions:

1. This device may not cause harmful interference, and
2. This device must accept any interference received, including interference that may cause undesired operation.

MSI Computer Corp.

901 Canada Court, City of Industry, CA 91748, USA
(626) 913-0828 www.msi.com

Chemical Substances Information

In compliance with chemical substances regulations, such as the EU REACH Regulation (Regulation EC No. 1907/2006 of the European Parliament and the Council), MSI provides the information of chemical substances in products at:

https://storage-asset.msi.com/html/popup/csr/evmtprtt_pcm.html

WEEE Statement

To protect the global environment and as an environmentalist, MSI must remind you that... Under the European Union ("EU") Directive on Waste Electrical and Electronic Equipment, Directive 2002/96/EC, which takes effect on August 13, 2005, products of "electrical and electronic equipment" cannot be discarded as municipal wastes anymore, and manufacturers of covered electronic equipment will be obligated to take back such products at the end of their useful life. MSI will comply with the product take-back requirements at the end of life of MSI-branded products that are sold into the EU. You can return these products to local collection points.

Green Product Features

- Reduced energy consumption during use and stand-by
- Limited use of substances harmful to the environment and health
- Easily dismantled and recycled
- Reduced use of natural resources by encouraging recycling
- Extended product lifetime through easy upgrades
- Reduced solid waste production through take-back policy

Environmental Policy

- The product has been designed to enable proper reuse of parts and recycling and should not be thrown away at its end of life.
- Users should contact the local authorized point of collection for recycling and disposing of their end-of-life products.
- Visit the MSI website and locate a nearby distributor for further recycling information.
- Users may also reach us at gpcontdev@msi.com for information regarding proper




Copyright and Trademarks Notice

Copyright © Micro-Star Int’l Co., Ltd. All rights reserved. The MSI logo used is a registered trademark of Micro-Star Int’l Co., Ltd. All other marks and names mentioned may be trademarks of their respective owners. No warranty as to accuracy or completeness is expressed or implied. MSI reserves the right to make changes to this document without prior notice.

Technical Support

If a problem arises with your product and no solution can be obtained from the user’s manual, please contact your place of purchase or local distributor. Alternatively, please visit <https://www.msi.com/support/> for further guidance.

Documents / Resources

 <small>LIQUID CPU COOLER</small> MAG CORELIQUID 360R V2 MAG CORELIQUID 280R V2 MAG CORELIQUID 240R V2 MAG CORELIQUID 240R V2 WHITE <small>User Guide</small>	msi Mag Coreliquid 360r V2 Liquid CPU Cooler [pdf] User Guide Mag Coreliquid 360r V2 Liquid CPU Cooler, Mag Coreliquid 360r V2, Liquid CPU Cooler
 <small>LIQUID CPU COOLER</small> MAG CORELIQUID 360R V2 MAG CORELIQUID 280R V2 MAG CORELIQUID 240R V2 MAG CORELIQUID 360R V2 WHITE MAG CORELIQUID 240R V2 WHITE <small>User Guide</small>	msi Mag Coreliquid 360r V2 Liquid CPU Cooler [pdf] User Guide Mag Coreliquid 360r V2 Liquid CPU Cooler, Mag Coreliquid 360r V2, Liquid CPU Cooler, Cooler
 <small>LIQUID CPU COOLER</small> MAG CORELIQUID 360R V2 MAG CORELIQUID 280R V2 MAG CORELIQUID 240R V2 MAG CORELIQUID 360R V2 WHITE MAG CORELIQUID 240R V2 WHITE <small>User Guide</small>	msi MAG CORELIQUID 360R V2 Liquid CPU Cooler [pdf] User Guide MAG CORELIQUID 360R V2, MAG CORELIQUID 280R V2, MAG CORELIQUID 240R V2, MAG CORELIQUID 360R V2 WHITE, MAG CORELIQUID 240R V2 WHITE, MAG CORELIQUID 360R V2 Liquid CPU Cooler, Liquid CPU Cooler, CPU Cooler, Cooler

References

-  [MSI.GM](https://www.msi.com)

-  [MSI - Redirect](#)

[Manuals+](#), [home](#) [privacy](#)