

msi™

D4040 CPU
Single AMD EPYC
8004 Series
Processors



msi D4040 CPU Single AMD EPYC 8004 Series Processors User Guide

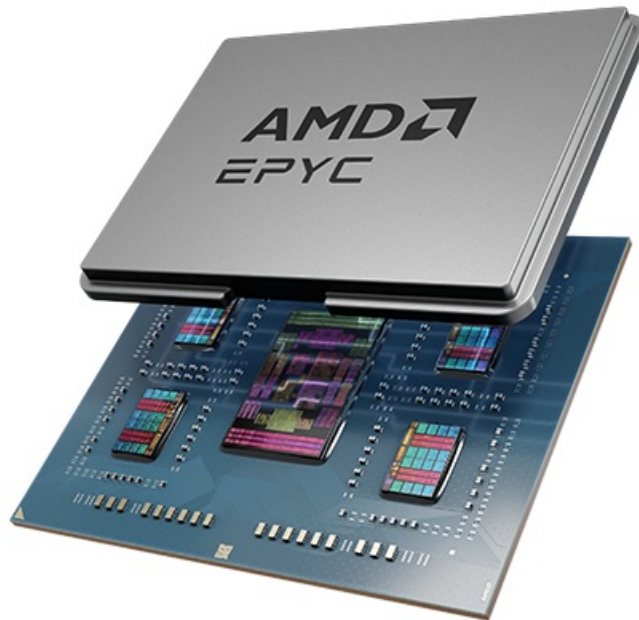
[Home](#) » [MSI](#) » msi D4040 CPU Single AMD EPYC 8004 Series Processors User Guide 

Contents

- [1 msi D4040 CPU Single AMD EPYC 8004 Series Processors](#)
- [2 Specifications](#)
- [3 Product Usage Instructions](#)
- [4 FAQs](#)
- [5 OVERVIEW](#)
- [6 Front Panel Header](#)
- [7 CPU and Heatsink Installation](#)
- [8 Connecting the Power Connectors](#)
- [9 Documents / Resources](#)
 - [9.1 References](#)
- [10 Related Posts](#)

msi™

msi D4040 CPU Single AMD EPYC 8004 Series Processors



Specifications

- CPU: Single AMD EPYCTM 8004 series processors, TDP up to 225W
- Memory: Supports DDR5 RDIMMs with memory speeds up to 4800 MT/s (1DPC)

Product Usage Instructions

1. CPU and Heatsink Installation:

Follow the manufacturer's instructions to properly install the CPU and heatsink on the server board.

2. Memory Installation:

The server board supports DDR5 RDIMMs. Make sure to populate at least one DDR5 DIMM. Follow the memory installation guidelines provided in the user manual.

3. Connecting Power Connectors:

Connect the power connectors JATX1 and JATX2 as indicated in the user manual to ensure proper power supply to the server board.

4. Connectors, Jumpers, and LED Indicators:

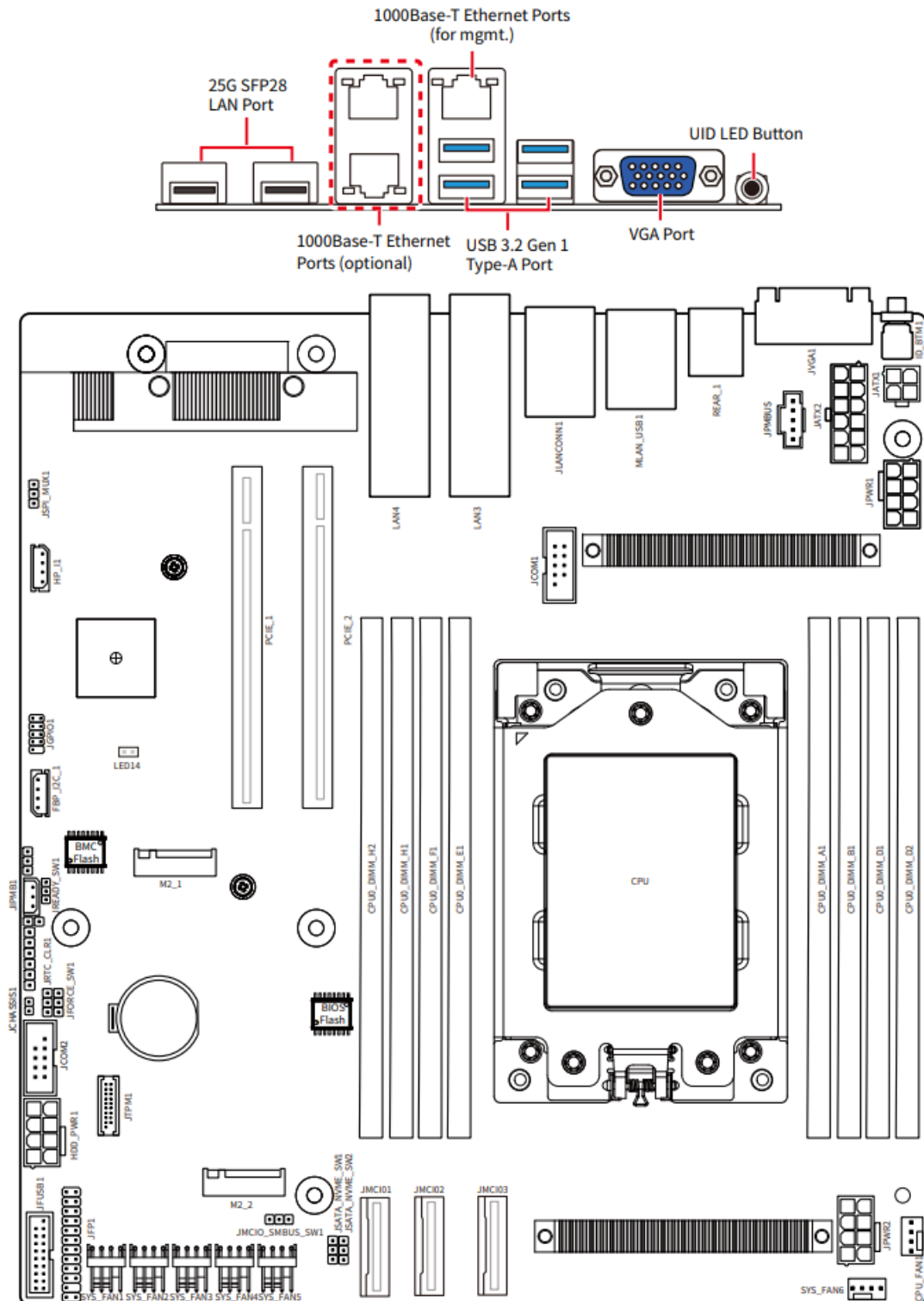
Refer to the user manual for detailed information on connecting various connectors, jumpers, and LED indicators on the server board.

FAQs

- **Q: What type of processors does the server board support?**
 - A: The server board supports Single AMD EPYCTM 8004 series processors with a TDP of up to 225W.
- **Q: What type of memory is compatible with the server board?**
 - A: The server board supports DDR5 RDIMMs with memory speeds up to 4800 MT/s (1DPC).

- **Q: How many DDR5 DIMMs should be populated on the server board?**
 - A: At least one DDR5 DIMM should be populated on the server board.

OVERVIEW



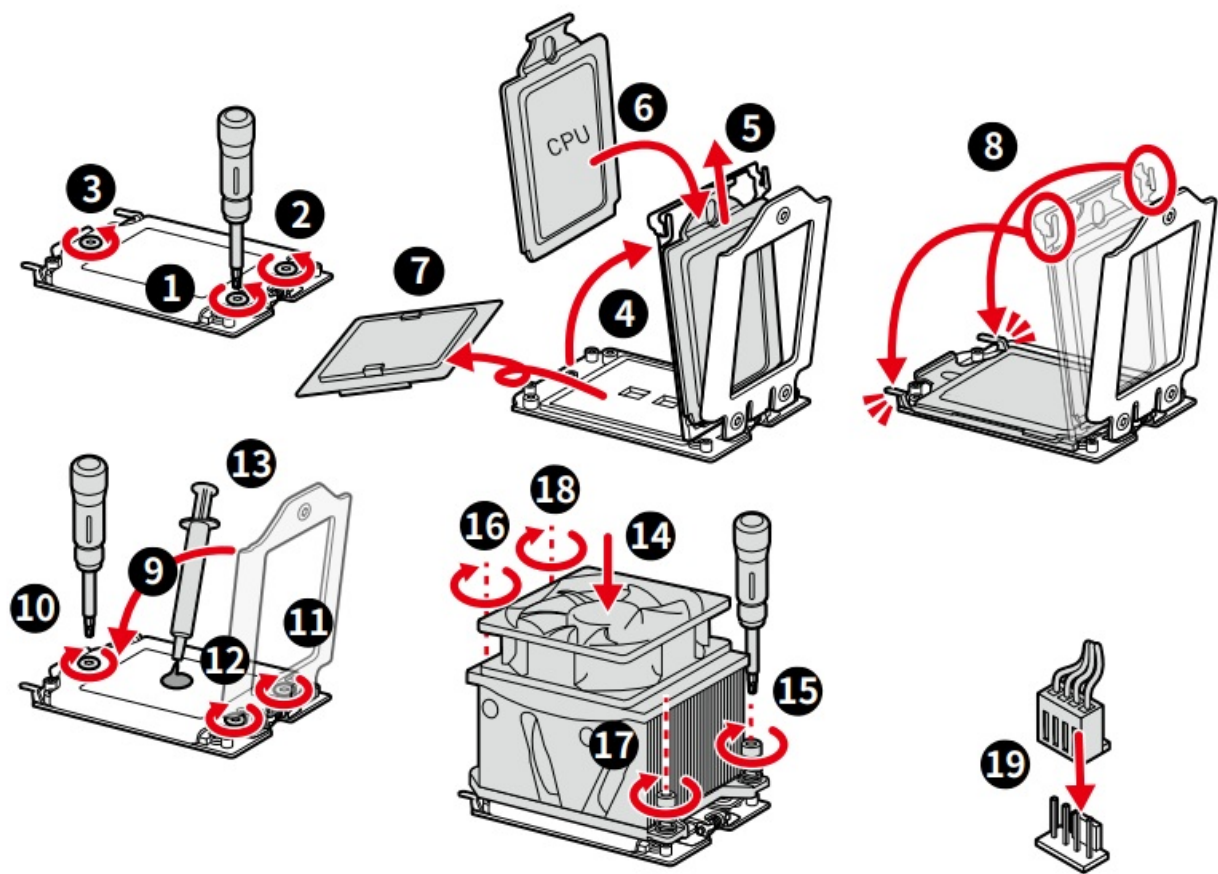
CPU

Single AMD EPYC™ 8004 series processors, TDP up to 225W.

Front Panel Header

JFP1							
2		1		24		23	
1	P3V3	2	P3V3_AUX	3	No Pin	4	UID_LED+
5	FP_PWR_LED_B_N	6	FP_ID_LED_N	7	P3V3	8	SYS_ERR_LED_L
9	LED_HDD_ACTIVITY_N	10	SYS_FLT_LED_L	11	FP_PWR_BTN_N	12	NIC1_LED+
13	GND	14	FP_LNK_ACT_NIC1_LED_N	15	FP_RST_BTN_N	16	BMC_SMB_FP_DAT
17	GND	18	BMC_SMB_FP_CLK	19	FP_ID_BTN_N	20	FP_INTRUDER_N
21	GND	22	P3V3_AUX	23	FP_NMI_BTN_N	24	FP_LNK_ACT_NIC2_LED_N

CPU and Heatsink Installation



Connectors, Jumpers and LED Indicators

Name	Description
JMCIO1~3	MCIO 8i Connectors
M2_1, M2_2	M.2 Slots (M Key, PCIe 5.0 x4, 2280)
PCIE_1, PCIE_2	PCIe Expansion Slots
JPWR1~2	8-Pin ATX Power Connectors
HDD_PWR1	8-Pin HDD BP Power Connector
JATX1	4-Pin Power Connector
JATX2	12-Pin Power Connector
SYS_FAN1~6	Fan Connectors
CPU_FAN1	CPU Pump Connector
JFUSB1	USB 3.2 Gen 1 Header
JFP1	Front Panel Header
JTPM1	SPI TPM Header
JGPIO1	GPIO Header
JPMBUS1	PMBus Header
JIPMB1	IPMB Header
FBP_I2C_1, HP_I1	I2C Headers
JCHASSIS1	Chassis Intrusion Header
JCOM1~2	COM Port Headers
BAT1	CMOS Battery
JSPI_MUX1	BIOS select jumper (default pin 1-2, SYS BIOS ROM & control by BMC)
JREADY_SW1	BMC ready jumper (default pin 1-2)
JRTC_CLR1	CMOS clear jumper (default pin 1-2, normal)
JFORCE_SW1	CPLD power-on jumper (default pin 1-2, normal)
JMCIO_SMBUS_SW1	JMCIO2 /3 SMBUS to CPU HP SMBUS/SGPIO (default pin 1-2)
JSATA_NVME_SW1	JMCIO2 SATA/ NVMe signal select jumper (default pin 1-2, SATA)
JSATA_NVME_SW2	JMCIO3 SATA/ NVMe signal select jumper (default pin 1-2, SATA)
LED14	BMC Heartbeat LED

Memory

The server board supports DDR5 RDIMMs with memory speeds up to 4800 MT/s (1DPC

H2

H1

F1

E1

A1

B1

D1

D2

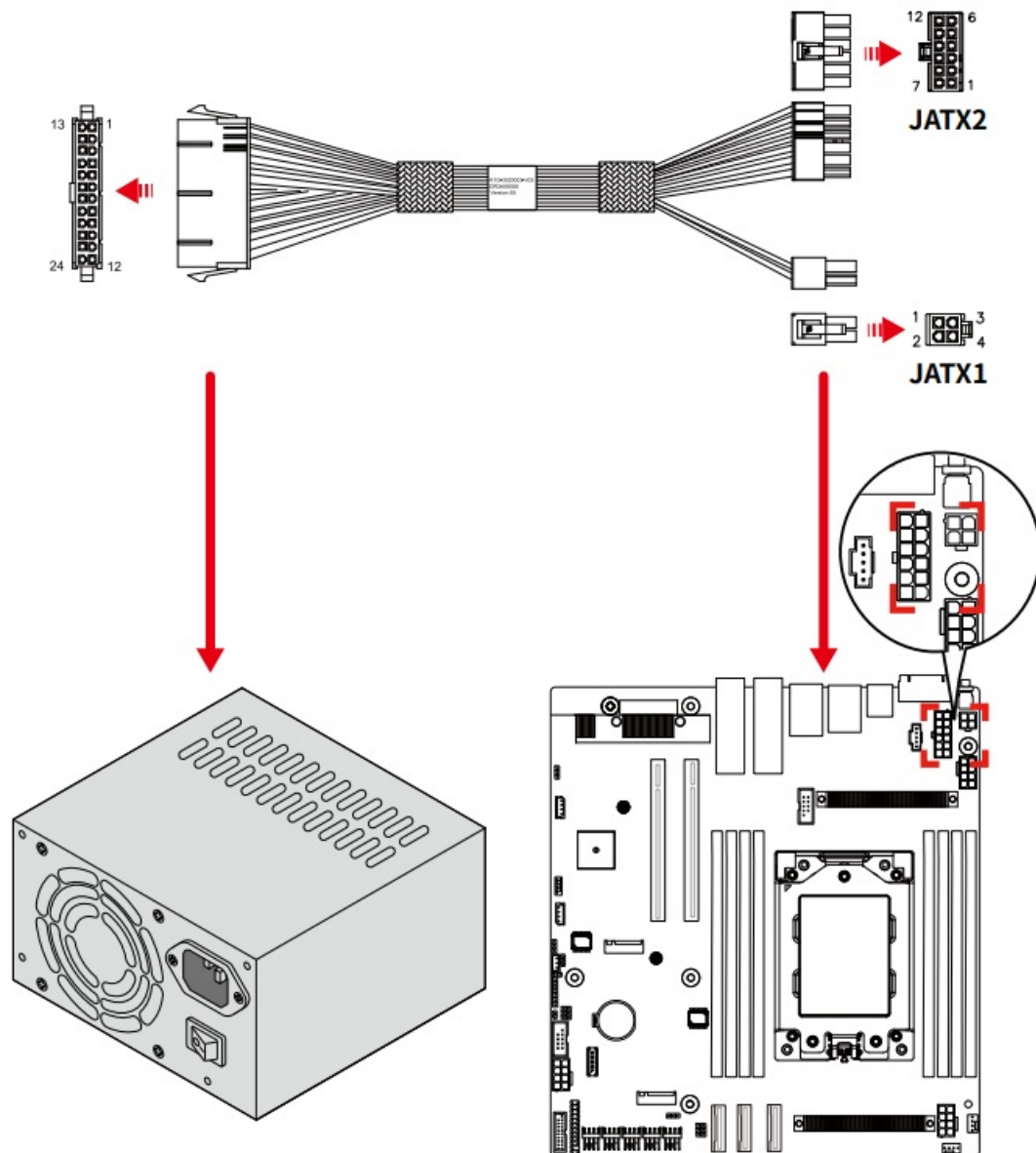
AMD®

EPYC™

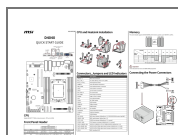
Channel \ Qty. of DDR5	H2	H1	F1	E1	C P U	A1	B1	D1	D2
8	V	V	V	V		V	V	V	V
6	V		V	V		V	V		V
4	V			V		V	V		V
2				V		V	V		
1						V			
“V” indicates DIMMs are populated with DDR5 .									

Important There should be at least one DDR5 DIMM populated.

Connecting the Power Connectors



Documents / Resources



[msi D4040 CPU Single AMD EPYC 8004 Series Processors](#) [pdf] User Guide
S3672X1, D4040 CPU Single AMD EPYC 8004 Series Processors, D4040, CPU Single AMD EPYC 8004 Series Processors, Single AMD EPYC 8004 Series Processors, AMD EPYC 8004 Series Processors, 8004 Series Processors, Processors

References

- [User Manual](#)

[Manuals+](#), [Privacy Policy](#)

This website is an independent publication and is neither affiliated with nor endorsed by any of the trademark owners. The "Bluetooth®" word mark and logos are registered trademarks owned by Bluetooth SIG, Inc. The "Wi-Fi®" word mark and logos are registered trademarks owned by the Wi-Fi Alliance. Any use of these marks on this website does not imply any affiliation with or endorsement.