



**Contents** [ [hide](#) ]

- [1 msi CG480 AI Server](#)
- [2 Specifications](#)
- [3 OVERVIEW](#)
- [4 Install CPU and Heatsink](#)
- [5 Memory](#)
- [6 Install PCIe Add-in Card](#)
- [7 FAQs](#)
- [8 Documents / Resources](#)
  - [8.1 References](#)



## msi CG480 AI Server

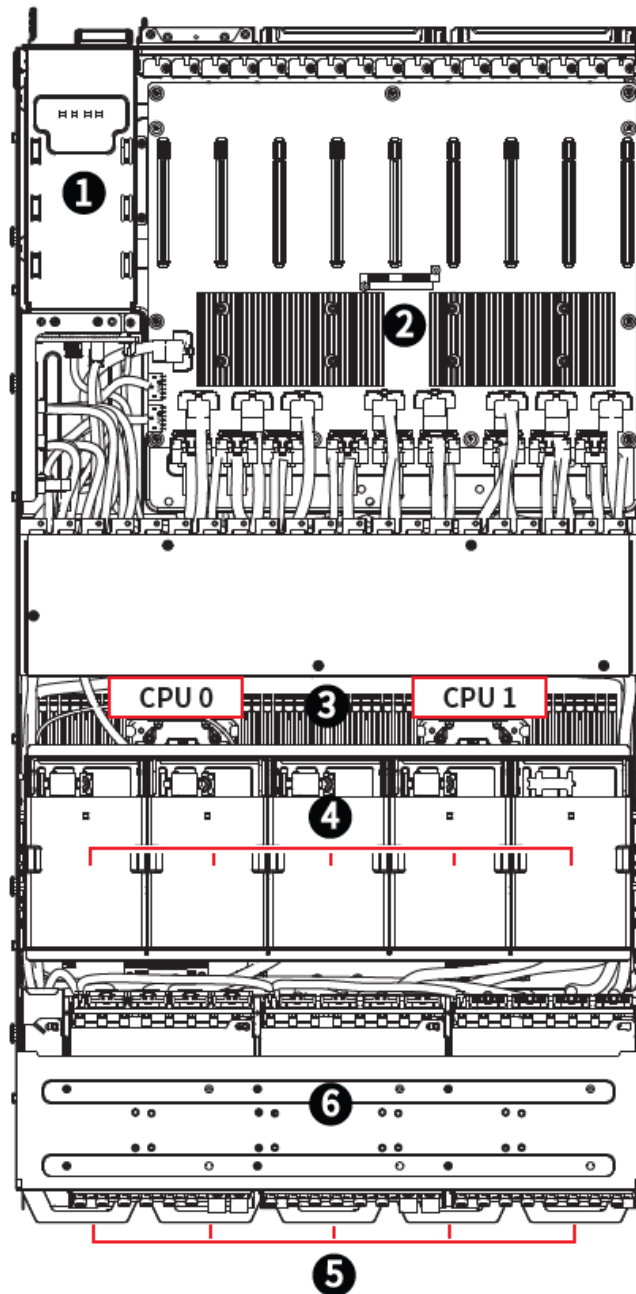


## Specifications

- **Model:** CG480-S5063
- **CPU Package Type:**
  - **Thin Package:** Granite Rapids- SP XCC
  - **Thick Package:** Granite Rapids- SP HCC/ LCC, Sierra Forest- SP
- **Memory Support:**
  - 32 DDR5 DIMM slots
  - Compatible with RDIMMs and MRDIMMs
  - **Max Frequency:** 6400 MT/s (1DPC), 5200 MT/s (2DPC), 8000 MT/s (only support 1DPC)
  - **Max Capacity per DIMM:** 256GB (RDIMM), 64GB (MRDIMM)

## OVERVIEW

### Top View



No.	Description	No.	Description
1	(3+1) 3200W CRPS PSU	4	5 x 8080 Hot-Swap System Fans (upper, for GPU)
2	PCIe Switch Board	5	5 x 8080 Hot-Swap System Fans (bottom, for CPU)
3	Motherboard	6	20 x Hot-Swap E1.S drive bays (PCIe 5.0 x4 NVMe)

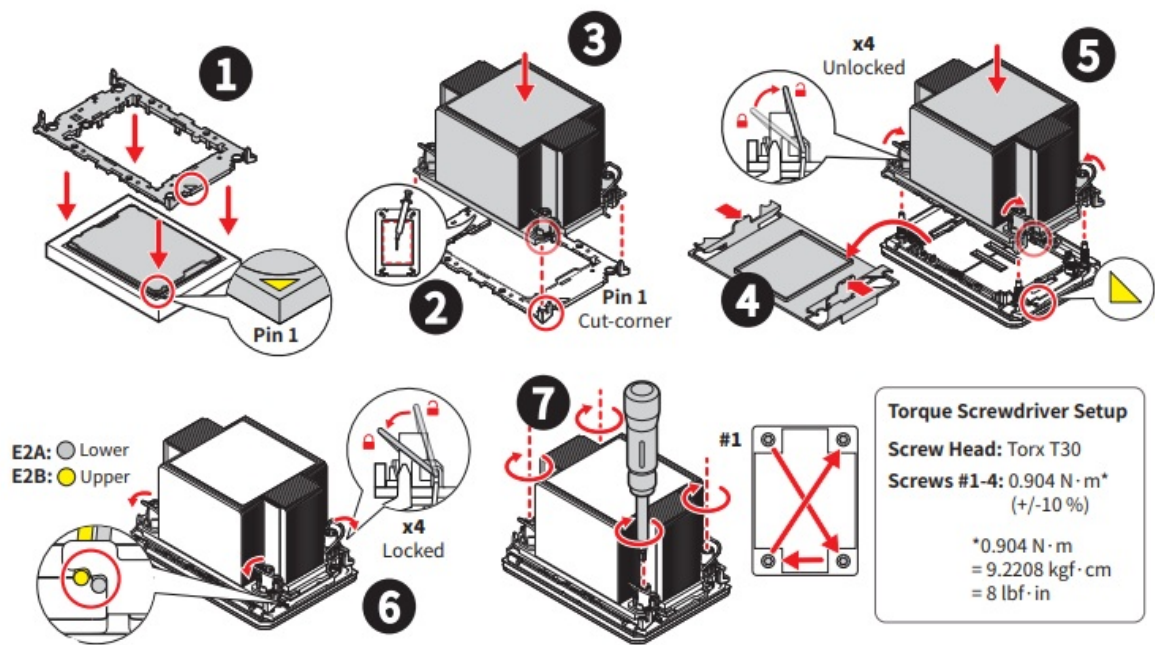
## CPU and GPU

- **CPU:** Dual Intel® Xeon® 6700E- series, 6500P-series and 6700P-series processors, TDP up to 350W.
- **GPU:** Max eight double wide PCIe GPU cards, TDP up to 600W.

## ⚠ Safety Precautions

- **Power Off Before Servicing:** Always power off the server and unplug the power cord before installing or removing components.
- **ESD Protection Required:** Use an ESD wrist strap or anti-static mat when handling internal components to prevent electrostatic discharge damage.

Install CPU and Heatsink



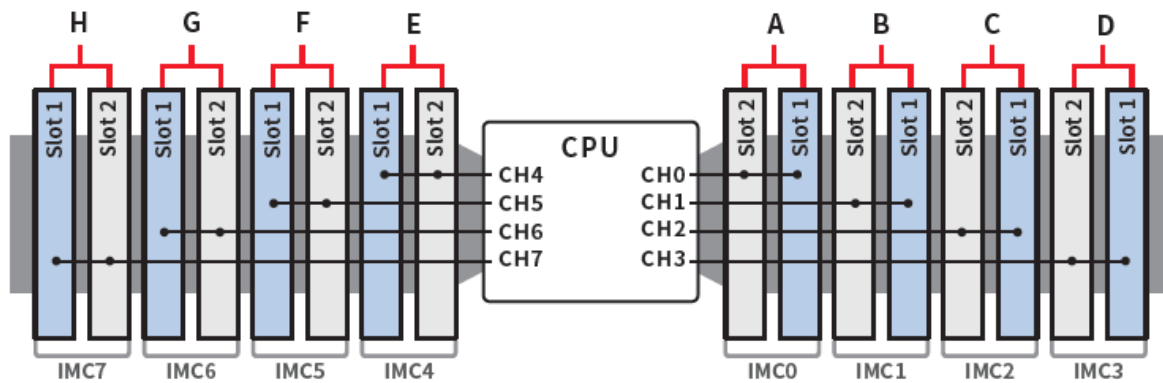
**Important** Please refer to the following table for the corresponding CPU carrier.

CPU Package Type	Thin Package	Thick Package
CPU Package Name	<ul style="list-style-type: none"><li>• Granite Rapids- SP XCC</li></ul>	<ul style="list-style-type: none"><li>• Granite Rapids- SP HCC/ LCC</li><li>• Sierra Forest- SP</li></ul>
CPU Carrier Code	E2A	E2B

Memory

The server board supports 32 DDR5 DIMM slots, compatible with RDIMMs and MRDIMMs.

DIMM Type	Max Frequency	Max Capacity per DIMM
RDIMM	6400 MT/s (1DPC), 5200 MT/s (2DPC)	256GB
MRDIMM	8000 MT/s (only support 1DPC)	64GB



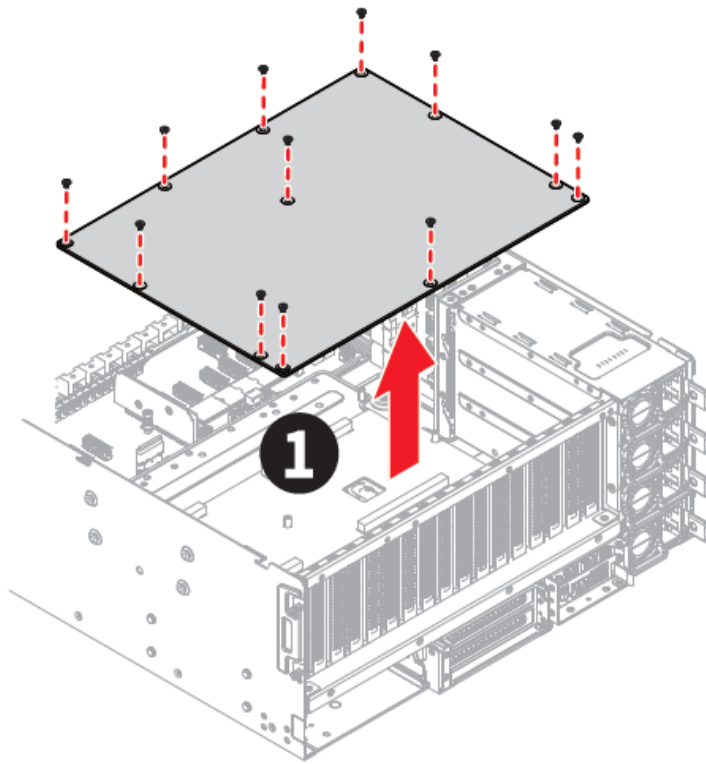
IMC#	IMC7		IMC6		IMC5		IMC4		C P U	IMC0		IMC1		IMC2		IMC3	
Channel	H		G		F		E			A		B		C		D	
	Chan 7		Chan 6		Chan 5		Chan 4			Chan 0		Chan 1		Chan 2		Chan 3	
DDR5 Qty.	H1	H2	G1	G2	F1	F2	E1	E2		A2	A1	B2	B1	C2	C1	D2	D1
1											V						
4			V				V				V						
	V				V							V					V
8	V		V		V		V				V		V		V		V
			V	V			V	V		V	V			V	V		
	V	V			V	V						V	V			V	V
12	V		V	V	V		V	V		V	V		V	V			V
16	V	V	V	V	V	V	V	V		V	V	V	V	V	V	V	V
“V” indicates DIMMs are populated with <b>DDR5</b> .																	

## Important

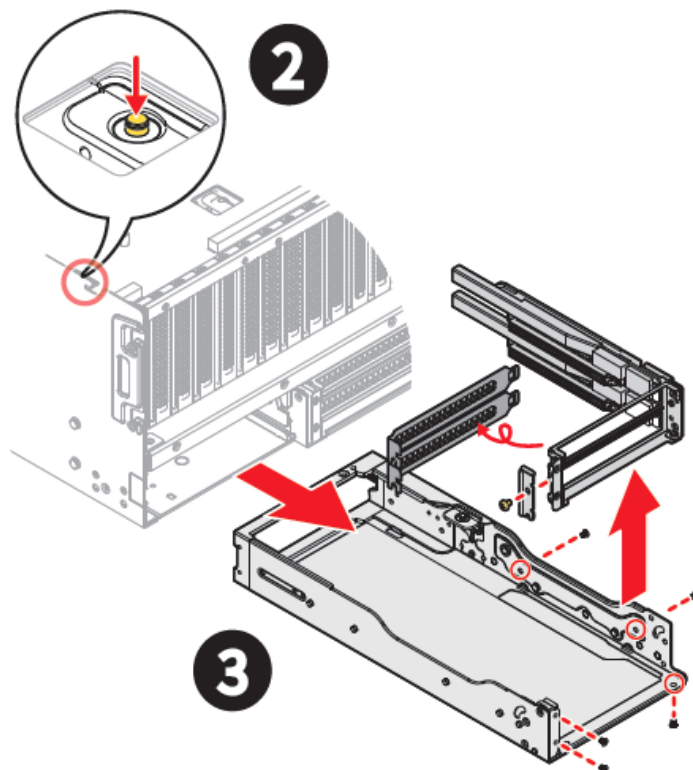
- There should be at least one DDR5 DIMM per socket.
- DDR5 memory configurations requires same DIMM types, ranks, speeds, and densities.
- Mixing vendors, non-3DS/3DS RDIMMs, 9×4 RDIMMs, or x8/x4 DIMMs is not allowed.
- Mixing DIMMs with different operating frequencies is not validated. When frequencies differ, the system defaults to the lowest common speed.

## Install PCIe Add-in Card

1. Disconnect all cables from the PCIe switch board and disconnect the CAM riser from the motherboard, then remove the board from the system.

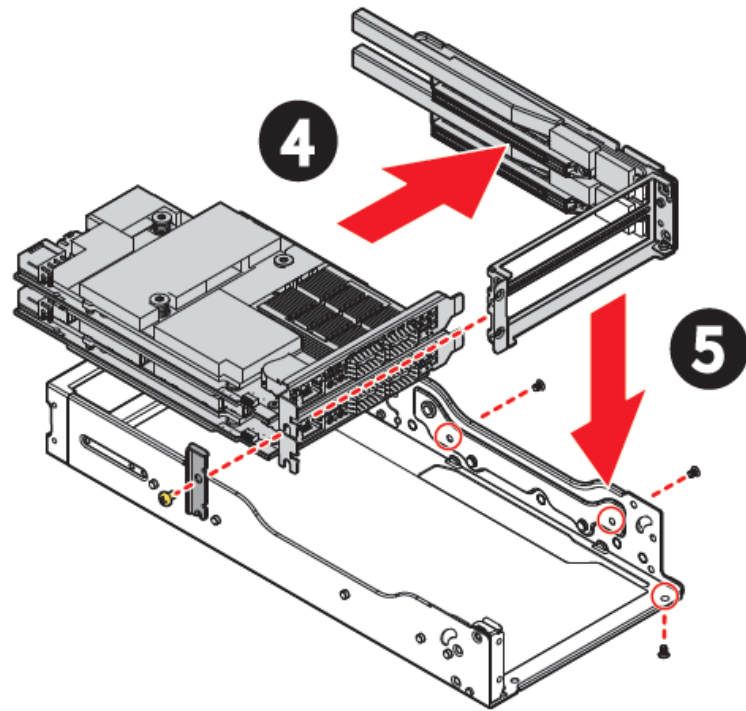


2. Unscrew the rear-side screw and slide out the PCIe tray by pressing the release switch.
3. Remove the fixing panel, filler panels, and PCIe bracket from the tray.

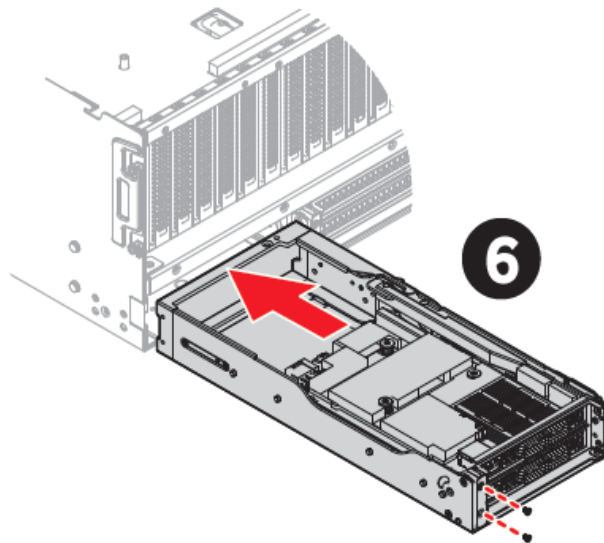


4. Insert the PCIe card into the connector and secure with fixing panel and screw.
5. Reattach the PCIe bracket and press down firmly until it clicks — the auto-lock plunger will engage.

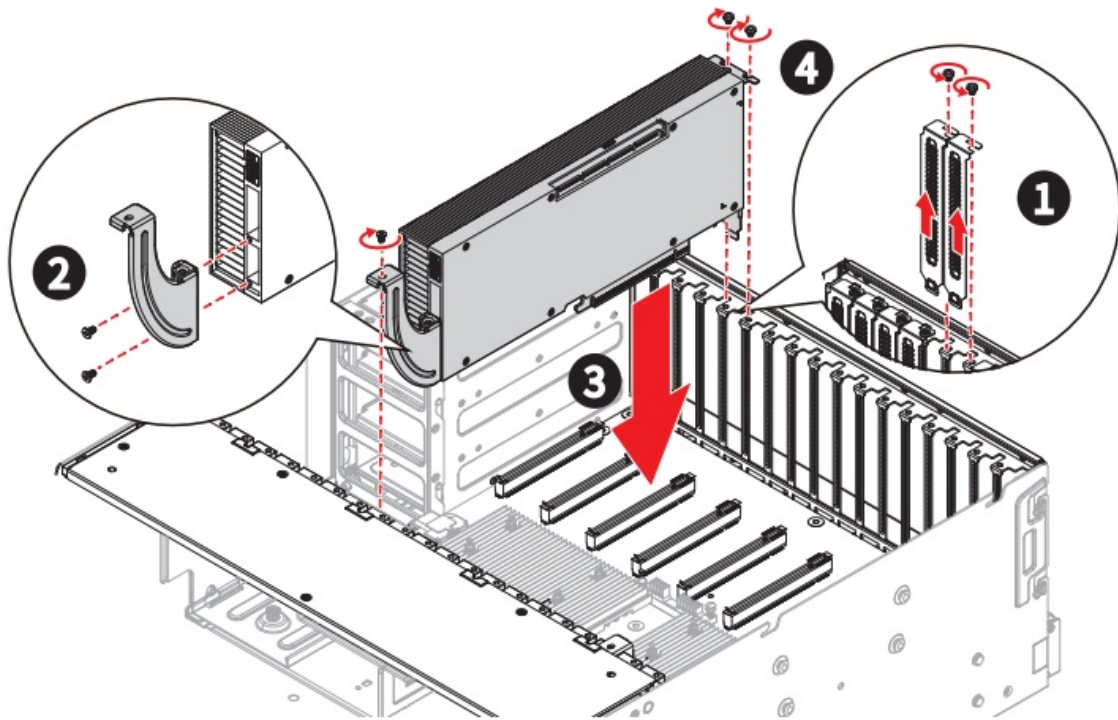




6. Reinstall the PCIe assembly into the chassis.
7. Reinstall the PCIe switch board and reconnect cables.
  - Refer to the User Guide for proper cable routing instructions.



- Install GPU Card
8. Loosen the screws on the riser bracket to remove the filler panels.
  9. Attach the mounting bracket to the GPU card by tightening the screws.
  10. Align the GPU card with the connector, and insert it until it is fully seated.
  11. Tighten the screws to securely fix the PCIe add-in card in place.



## FAQs

- **Q: What precautions should I take when handling internal components?**
  - **A:** Always power off the server and unplug the power cord before installing or removing components. Use an ESD wrist strap or anti-static mat to prevent electrostatic discharge damage.

## Documents / Resources

	<a href="#">msi CG480 AI Server [pdf]</a> User Guide G52-S4052X1, S405-CG480-S5063, CG480 AI Server, CG480, AI Server , Server
--	--

## References

- [User Manual](#)

💡 Ai server, CG480, CG480 AI Server, G52-S4052X1, MSi, S405-CG480-S5063,

📁 MSI Server

---

## Leave a comment



Your email address will not be published. Required fields are marked \*

Comment \*

Name

Email

Website

☐ Save my name, email, and website in this browser for the next time I comment.

**Post Comment**

**Search:**

**Search**

[Manuals+](#) | [Upload](#) | [Deep Search](#) | [Privacy Policy](#) | [@manuals.plus](#) | [YouTube](#)

This website is an independent publication and is neither affiliated with nor endorsed by any of the trademark owners. The "Bluetooth®" word mark and logos are registered trademarks owned by Bluetooth SIG, Inc. The "Wi-Fi®" word mark and logos are registered trademarks owned by the Wi-Fi Alliance. Any use of these marks on this website does not imply any affiliation with or endorsement.