

MSG MS005 Test Bench Upgrade Kit



MSG MS005 Test Bench Upgrade Kit Instruction Manual

[Home](#) » [MSG](#) » MSG MS005 Test Bench Upgrade Kit Instruction Manual 

Contents

- [1 MSG MS005 Test Bench Upgrade Kit](#)
- [2 Product Information](#)
- [3 Product Usage Instructions](#)
- [4 INTRODUCTION](#)
- [5 COMPONENTS](#)
- [6 OPERATION SEQUENCE](#)
- [7 Contacts](#)
- [8 Documents / Resources](#)
 - [8.1 References](#)
- [9 Related Posts](#)



MSG MS005 Test Bench Upgrade Kit



Product Information

Specifications

- **Product Name:** KIT005-48V
- **Manufacturer:** MSG Equipment
- **Compatibility:** MS005 test bench for testing 48V belt starter generators (BSG)
- **Features:**
 - Upgrade kit for testing 48V belt starter generators
 - Allows testing in both generator and starter modes of operation
 - Data reading from the control unit of the 48V starter-generator using a diagnostic scanner

Product Usage Instructions

Introduction

Thank you for choosing the KIT005-48V upgrade kit by MSG Equipment. This kit is designed to enhance the functionality of the MS005 test bench for testing 48V belt starter generators.

Upgrade Steps

1. Mounting the 48V power supply unit.
2. Connecting the power supply unit to the electrical system of the bench.
3. Updating the bench's software and activating the 48V starter-generator testing function.

Components Included in the Kit

- 48V power supply unit with a set of wires
- Mounting bracket for the power supply unit
- M6 nut (2 pcs)
- M4x20 screw (2 pcs)
- MS-33401 cable for diagnostics of belt starter-generators 48V AUDI
- 48V AUDI alternator mount kit
- Installation instructions (card with QR code)

Frequently Asked Questions (FAQ)

Q: Can this kit be used with other test benches?

A: No, this kit is designed to upgrade the MS005 test bench for testing 48V belt starter generators.

Q: Is professional installation required for this upgrade?

A: While professional installation is recommended, users with technical knowledge can also perform the upgrade following the provided instructions carefully.

INTRODUCTION

- Thank you for choosing the product of MSG Equipment.
- The KIT005-48V kit is designed to upgrade the MS005 bench that lacks the mode for testing 48V belt starter generators (MS005 benches manufactured before September 2023).

The installation of the kit allows the MS005 bench to:

1. Test belt starter-generators in both generator and starter modes of operation.
2. Read data from the control unit of the 48V starter generator using a diagnostic scanner.

Before performing the installation works, carefully study this instruction.

Upgrade steps include:

1. Mounting the 48V power supply unit.
2. Connecting the 48V power supply unit to the electrical system of the bench.
3. Updating the bench's software and activating the 48V starter-generator testing function.

COMPONENTS

The kit includes:

Item name	Number of pcs
48V power supply unit with a set of wires	1
Mounting bracket for the power supply unit	2
M6 nut	2
M4x20 screw	2
MS-33401 – cable for diagnostics of belt starter-generators 48 V AUDI	1
48 V AUDI alternator mount kit	
Installation instructions (card with QR code)	1

OPERATION SEQUENCE

Mounting the RSP-3000-48 power supply unit into the bench.



1. Disconnect the bench from the 400V power supply.
2. Remove the rear panel by unscrewing the screws around the perimeter.



Figure 1. Dismountable panel of the bench enclosure

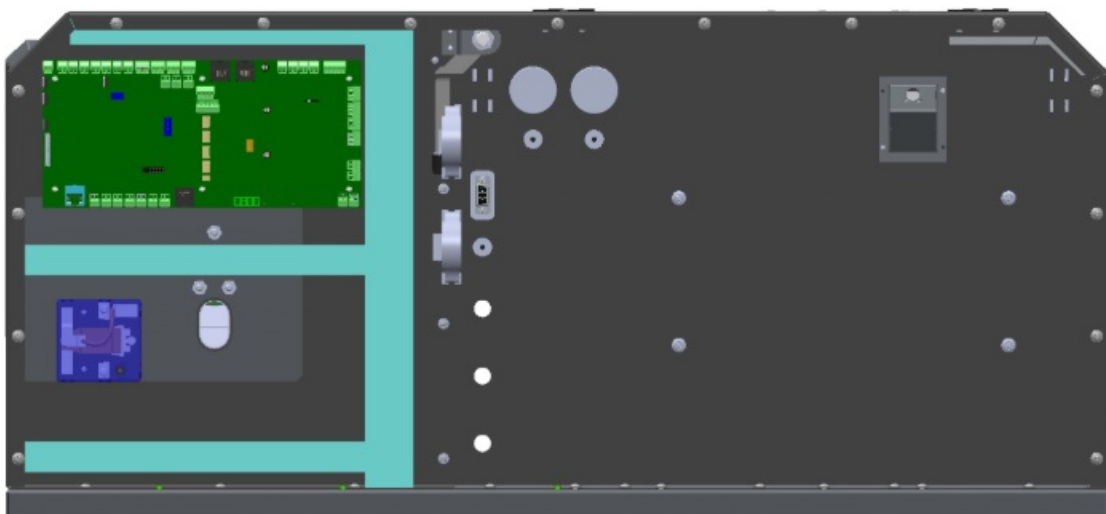


Figure 2. Bench enclosure after removing the rear panel

3. Install mounting brackets for securing the power supply unit.

- Attach the brackets to the inner partition of the housing using M6 nuts.

When installing, position the brackets to the extreme holes according to Figure 3.

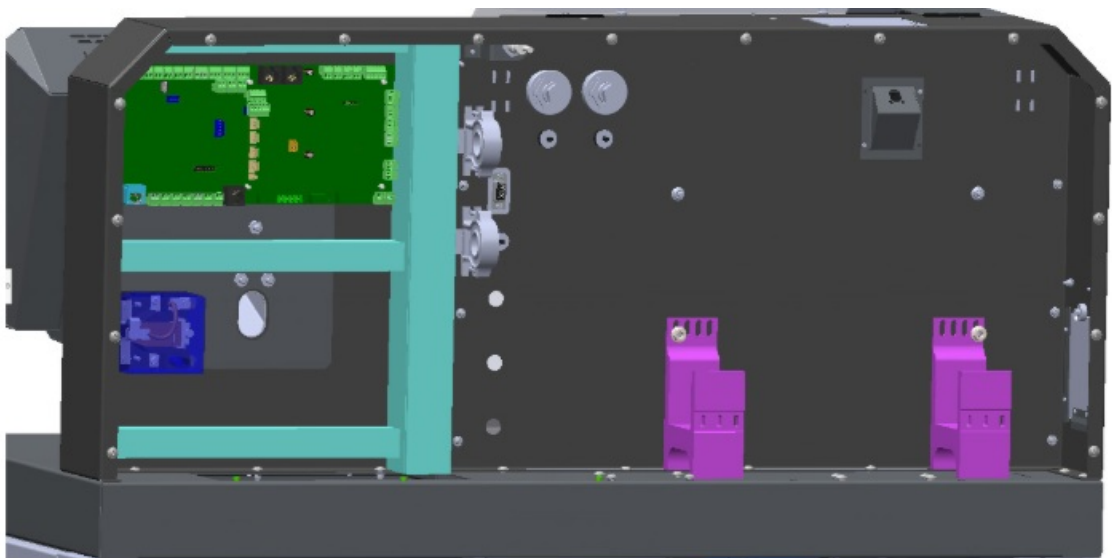


Figure 3. Mounting the brackets

4. Install the RSP-3000-48 power supply unit on the brackets (see Figure 4). When installing, position the power supply unit so the wires are on the left side.

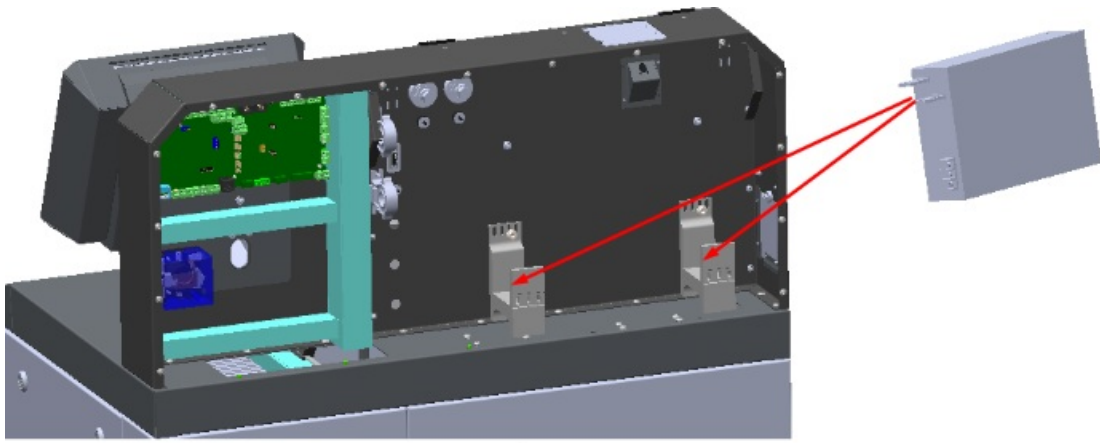


Figure 4

5. Secure the power supply unit to the brackets using screws (see Figure 5).

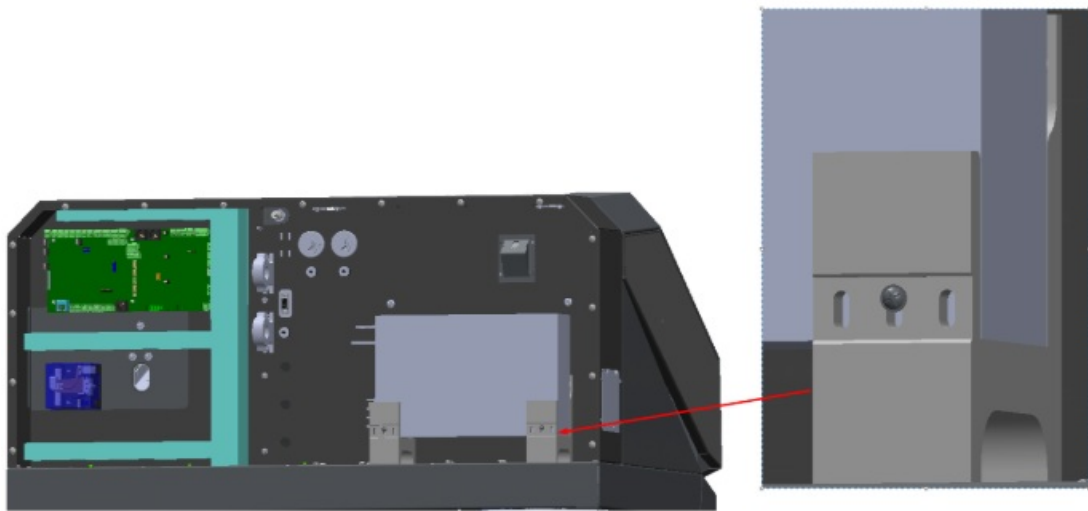


Figure 5. Фиксация блока питания

Connecting the RSP-3000-48 power supply unit to the bench's electrical system

Three sets of wires are connected to the RSP-3000-48 power supply unit (see Figure 6):

1. Power supply wires of the power supply unit.
2. Control wires for the power supply unit.
3. Power supply output wires.

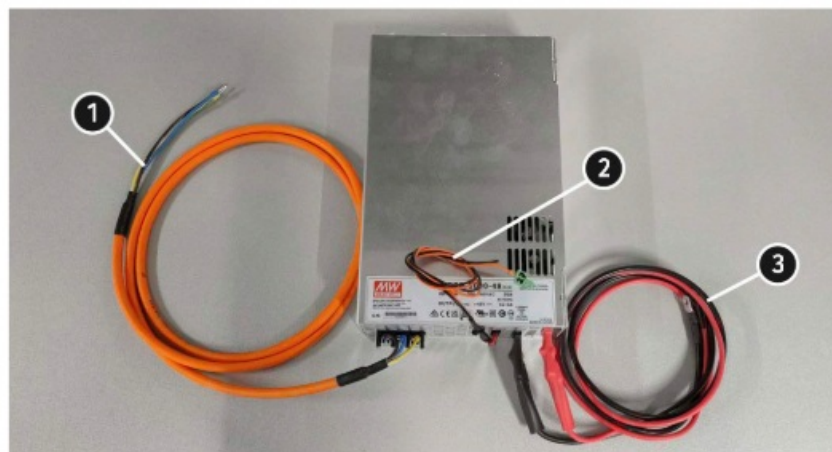


Figure 6

1. Open the right side panel of the bench.



Figure 7

2. Connect the black wire of the power supply output (item 3, Fig. 6) to the minus copper bar, see Fig. 8.

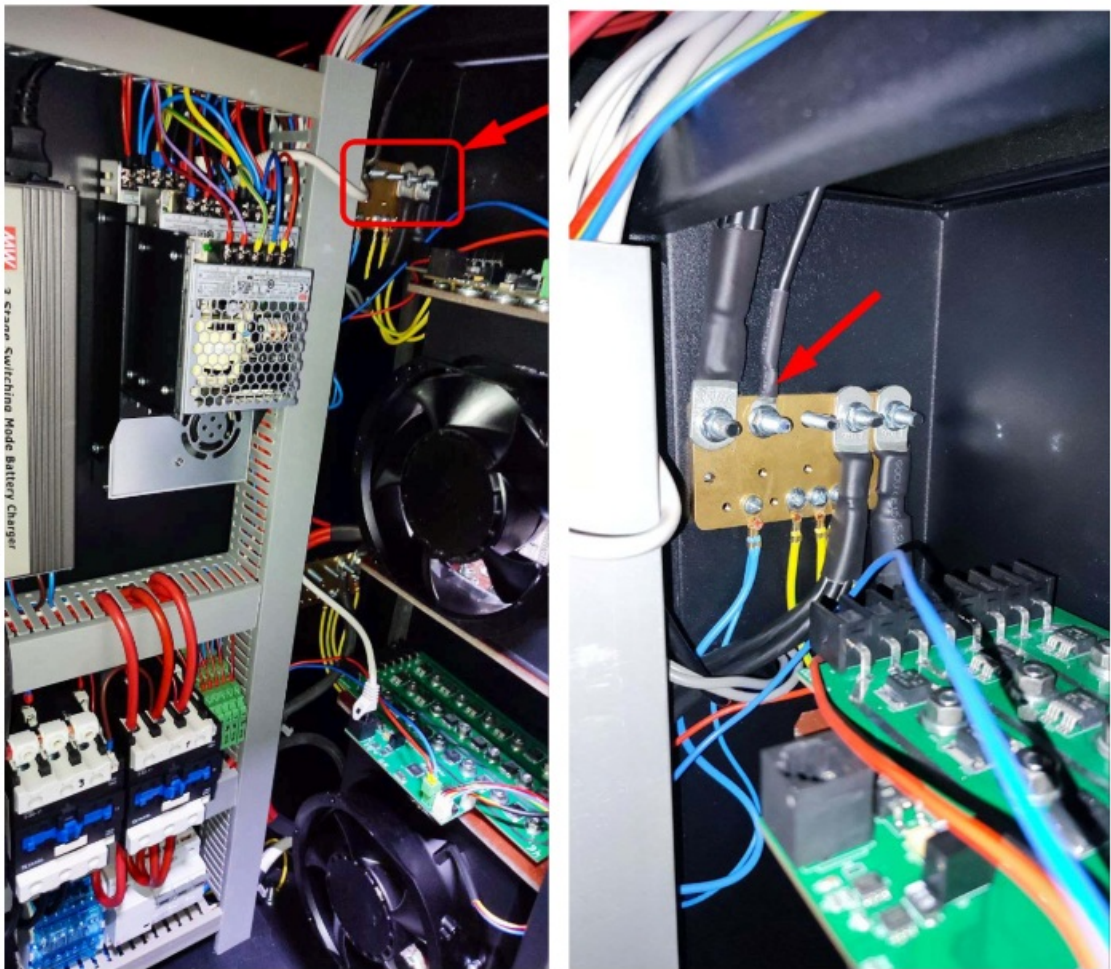


Figure 8

3. Connect the red wire of the power supply output (pos. 3, fig. 6) to the load block (see fig. 9).

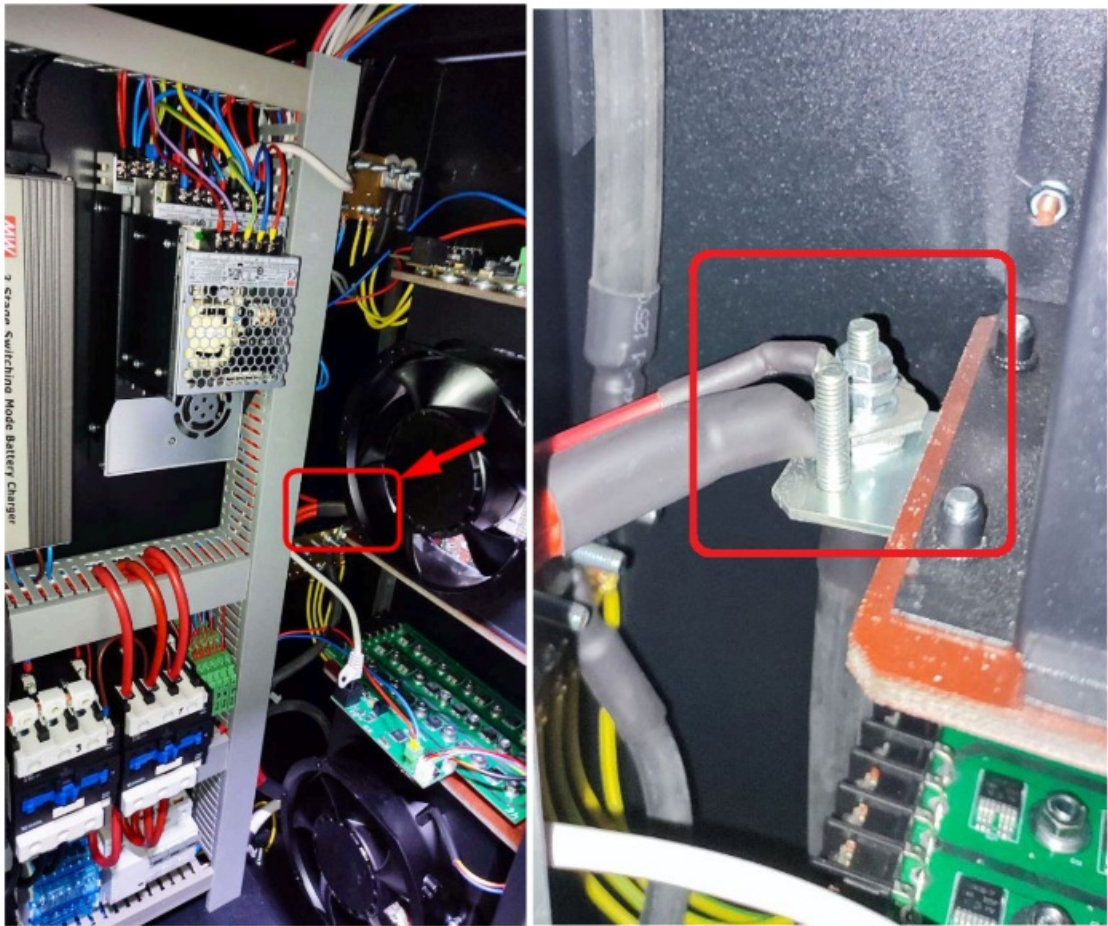


Figure 9

4. Connect the power supply wires of the power supply unit (pos. 1, fig. 6) to the power terminal block (see fig. 10).



Figure 10

- Remove the blue transparent cover of the terminal block.
- Connect the wires to the locations shown in the diagram 11. The places where wires of the corresponding color should be connected are highlighted.

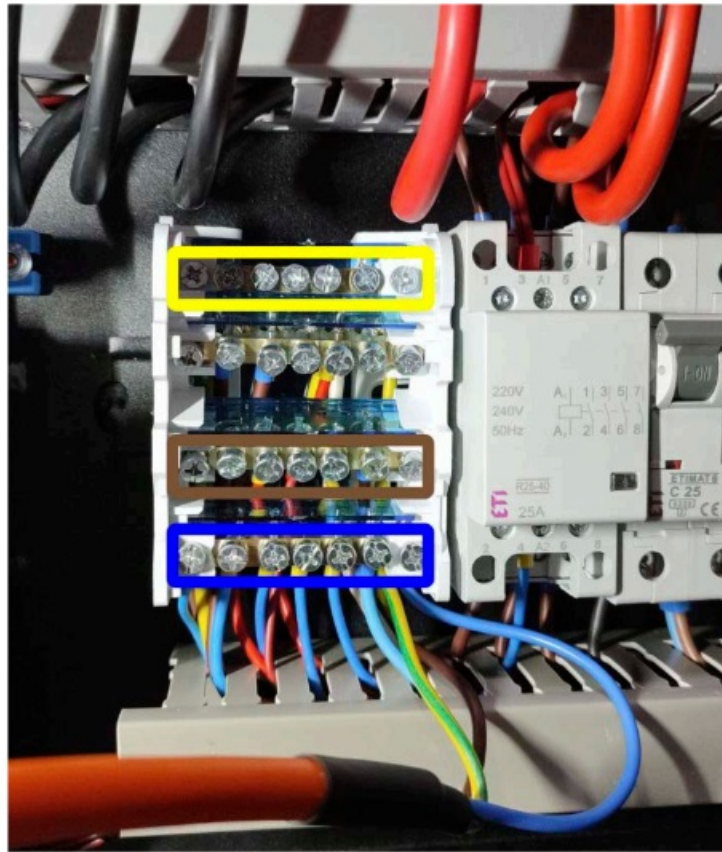


Figure 11

- After connecting the wires, replace the cover of the terminal block.
5. Connect the control wires for the power supply unit (pos. 2, fig. 6) to the main board as shown in Figure 12.
 12. The wire with the connector in position 1 and the black wire in position 2.

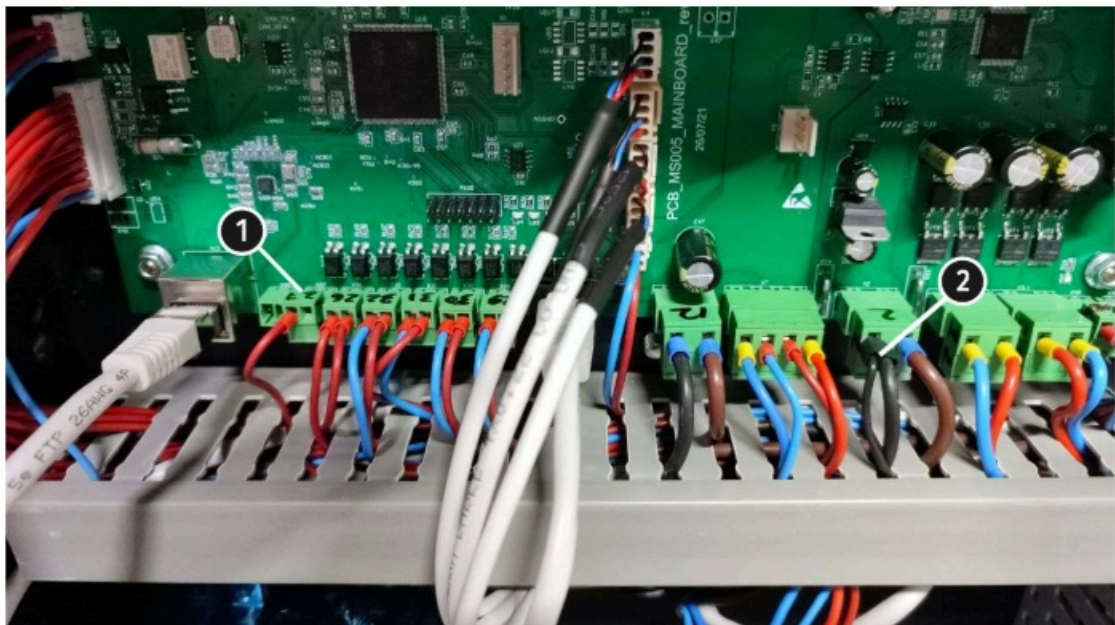


Figure 12

6. After connecting the wires, close the side door and screw the rear panel back into place.

Updating the bench's software and activating the new function – 48V belt starter-generator diagnostics

1. Turn on the bench. When the bench is turned on and connected to the internet, the software will be updated.
2. To activate the 48V function, go to the settings menu, and in the "General" tab, enter the command in the "Promo code" field: MSG48VACTIVE. Press "Enter" to accept the command.

Contacts

MSG Equipment SALES DEPARTMENT

- +38 073 529 64 26
- +38 067 888 19 34
- E-mail: sales@servicems.eu
- Website: servicems.eu


REPRESENTATIVE OFFICE IN POLAND STS Sp. z o.o

- ul. Familijna 27,
- Warszawa 03-197
- +48 833 13 19 70
- +48 886 89 30 56
- E-mail: sales@servicems.eu
- Website: msgequipment.pl

TECHNICAL SUPPORT

- +38 067 434 42 94
- E-mail: support@servicems.eu

Documents / Resources

 <p>MSG KIT005-48V MS005 TEST BENCH UPGRADE KIT FOR TESTING 48V AND 120V POWER SUPPLIES (MS005)</p> <p>INSTALLATION INSTRUCTIONS FOR THE MS005 TEST BENCH UPGRADE KIT FOR TESTING 48V AND 120V POWER SUPPLIES (MS005)</p>	<p>MSG MS005 Test Bench Upgrade Kit [pdf] Instruction Manual KIT005-48V, MS005 Test Bench Upgrade Kit, MS005, Test Bench Upgrade Kit, Bench Upgrade Kit, Upgrade Kit, Kit</p>
--	---

References

- [User Manual](#)

[Manuals+](#), [Privacy Policy](#)

This website is an independent publication and is neither affiliated with nor endorsed by any of the trademark owners. The "Bluetooth®" word mark and logos are registered trademarks owned by Bluetooth SIG, Inc. The "Wi-Fi®" word mark and logos are registered trademarks owned by the Wi-Fi Alliance. Any use of these marks on this website does not imply any affiliation with or endorsement.