



mrSafe SS03 Smart Home Socket Set Instruction Manual

[Home](#) » [mrSafe](#) » mrSafe SS03 Smart Home Socket Set Instruction Manual 

Contents

- 1 mrSafe SS03 Smart Home Socket Set
- 2 Getting Started
 - 2.1 Installing the app
 - 2.2 Starting the app and registering
 - 2.3 Installing the BASE socket
 - 2.4 Adding an EXTRA socket to your BASE socket
 - 2.5 Operating the socket
- 3 Socket options
- 4 Adding timers
- 5 Scenes
- 6 Support
- 7 Warranty
- 8 Documents / Resources
 - 8.1 References
- 9 Related Posts



mrSafe SS03 Smart Home Socket Set

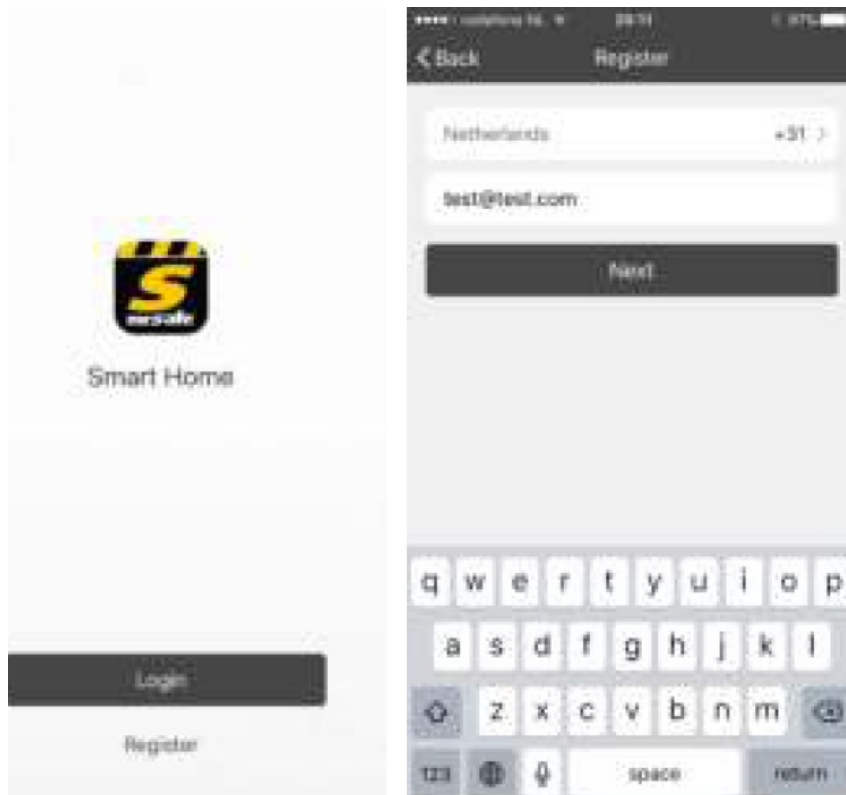


Getting Started

Installing the app

Go to the Apple App store or Google Play Store and search for “mrsafe”. If you are using an iPad you need to make sure that you have set the search for “apps for iPhone and iPad”. If you cannot find the App on the Google Play Store, you can download it for Android devices on www.mrsafe.eu. Download the mrsafe smart home app onto your device.

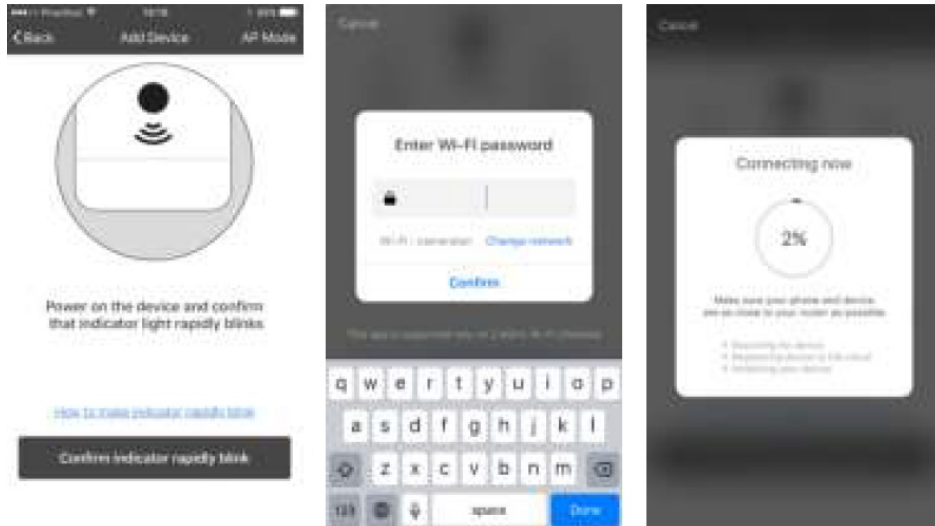
Starting the app and registering



When you are using the app for the first time, you need to setup an account. Tap “Register” to enter the registration page. The system will automatically recognize your country / area, or you can select it yourself. Enter your mobile phone number and/or your e-mail address, type in a password and tap “Next”. If you have entered your phone number you will receive a verification code by SMS. If you chose to register by e-mail address, you will receive a mail with the verification code. Use the link in the e-mail or the code of the SMS to verify your account. Tap “Confirm” to complete the registration. The app will remember your account after registration.

Installing the BASE socket

The Mr Safe Home Socket consists of 3 devices. 1 is marked with BASE on the product label. Insert this BASE socket in a wall power socket close to your Wi-Fi router. The WHITE LED on the BASE socket will light up. Start by making sure your smartphone is connected to your Wi-Fi Router and that both the socket and your smartphone are in the proximity of your Wi-Fi router. Open the app and press the “+” button in the upper right corner to add a device. When the white LED is flashing 2x per second, then click “confirm indication rapidly blinking”. Otherwise, press the button of the BASE socket for 6 seconds. The white LED on the BASE socket will now flash 2x/second (if the flashing is different, press the button again for 6 seconds) When the white LED is flashing correctly you can press the button in the app “confirm indicator rapidly blink”. The app will search for the new BASE socket. After it is found, you will have to enter your Wi-Fi password of the modem/router and you can enter or change the name and click done to finalize the installation.



Adding an EXTRA socket to your BASE socket

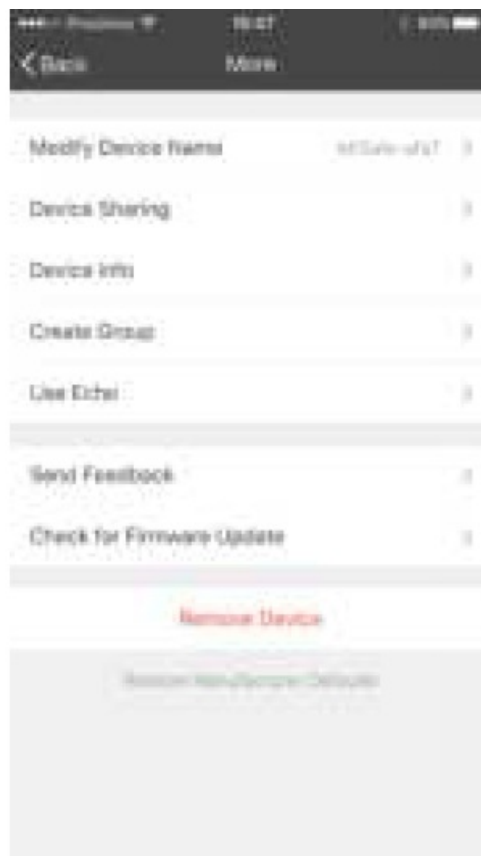
You can add an extra socket to your BASE socket by selecting the BASE socket in the app. Plug in the extra socket close to the base socket. Tap the Base socket in the app and press “+” add to add an extra socket. Press the button on the extra socket for 5 seconds and press “next” in the app to confirm. The base socket will now search for the extra socket. You can change the name and tap “save” to add the extra socket.



Operating the socket

From the app you can turn the smart sockets on or off by pressing the GREEN (=ON) or GREY (=OFF) button in the app

Socket options



To enter the options menu for the sockets, select the socket and press the “...” in the upper right corner. Here you can change the name of the device, share the device with family members, create groups and delete the device.

Change the name of the device

To change the name of the device, go to the options menu of the socket (as described above) and press “Change device name”. You can now input the desired name.

Sharing devices with your family

You can share devices with your family members so they can also control the smart sockets. Press “share device” and then “add” to add a family member. You will have to input their phone number or email-address and confirm.

Device info



Here you can verify details and info of your device.

Adding sockets to a group

You can group the sockets, so that when you turn them on or off they all execute the command with just one tap.

To group sockets press “...” in the upper right corner to enter the socket menu. Press “Create group” to select the sockets you want to group and press confirm to create the group.

Send feedback and search for firmware update

You can send feedback about the device to the manufacturer by pressing “send feedback” and leaving your note. It may take up a few days before an answer is returned.

From time to time the manufacturer will update the firmware for this device. You can manually check for new firmware by pressing “Search for new firmware” and installing it.



Deleting a device

Here you can also delete a device by pressing “Delete device”

Adding timers

You can add timers to your devices by double pressing the device in the list.

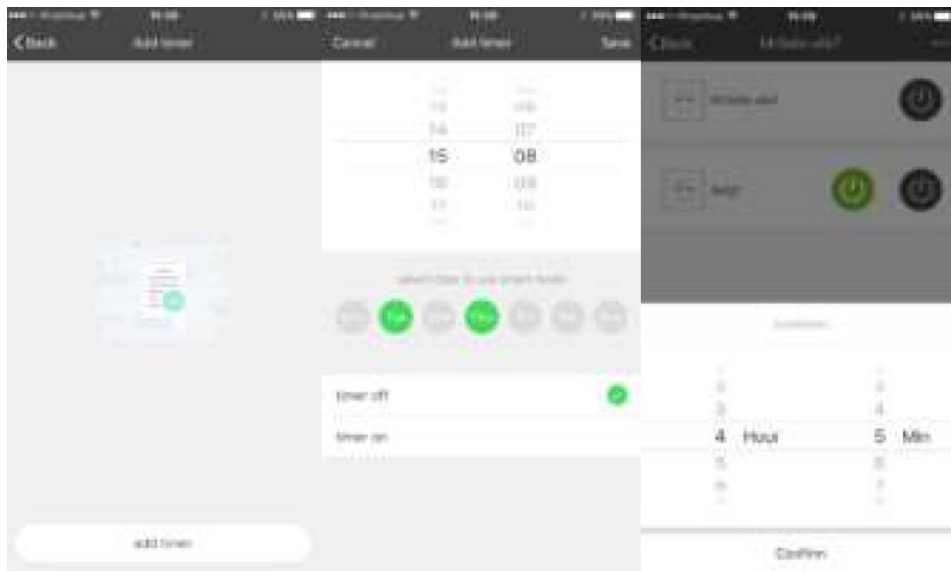
You can add a:

- **Planning timer**

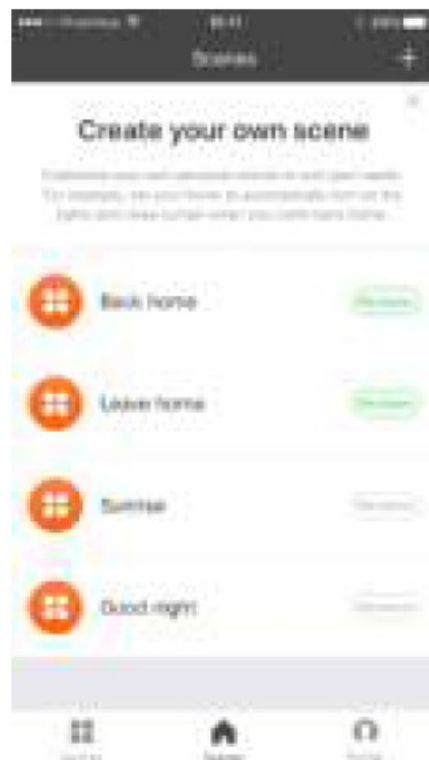
Select the planning timer if you want your socket to go ON/OFF at certain times on certain days. Press “Add Timer” in the lower right corner and press “add timer” to add your timer. You can choose the days and hours the device has to go ON/OFF.

- **Countdown timer**

Select the countdown timer if you want the device to go ON/OFF after a countdown time. Press “Countdown” in the lower middle to select the countdown for the device.

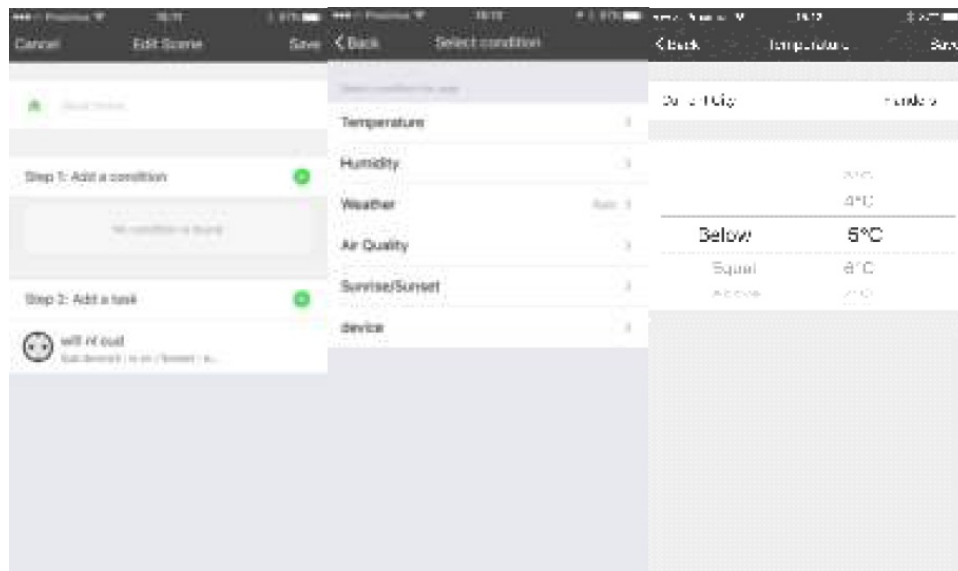


Scenes



You can add personalized scenes to your device, for example to turn on all devices when the sun sets, or by rainfall etc. Press “Scenes” in the app to get started with the 4 presets. If you want to add your own customized scene, press “+” in the upper right corner. Optionally, you can add a condition to the scene by selecting temperature, humidity, weather, air quality, sunrise/sunset,* ... The app will ask you to select your location and a certain condition such as temperature below/above x°C, weather conditions etc. Tap “add task” to select the device and the command to execute (ON/OFF, ...)

- (availability may differ per region)



Support

For all questions and additional information concerning this product, please contact support@mrsafe.eu

Warranty

Copyright © mr Safe®. mr Safe® is a registered trademark of TE-Group NV. The mr Safe® brand stands for superior quality products and excellent customer service. Therefore mr Safe® warrants this product to be free from defects in materials and workmanship for a period of two (2) years from the original purchase date of the product.

Disclaimer

Copyright © 2017 TE GROUP NV

These terms and conditions give the rights to use certain features on your device. You must agree to these terms and conditions before using the device. Your use of the device confirms or constitutes your agreement to be bound by these terms and conditions. If you do not agree to these terms and conditions, you may return your device to the point of purchase within 7 or 14 days from the purchase date. These terms and conditions do not replace any terms, disclaimers or conditions which were provided with your purchase. All such terms, conditions and disclaimers remain in full force. You must have a valid age to use and confirm the terms and conditions, at least 14 years, depending on the country. You are not allowed to analyze, modify, engineer or tamper with the software or hardware of the device and connected software or hardware.

TE Group has the right to make any change without prior notice to the hardware, software and the agreements, including those terms and conditions

All rights reserved.


TE Group will respect your privacy and the privacy laws. TE Group will not be liable to you or any other party for any damage or loss or interruption or other problem due to the or relating to the (use of) the device.

Warranty will be according to the warranty laws, and never exceed the amount of the purchase of the device. The software is provided 'AS IS' and gives you the non-exclusive, non-transferrable right to use on 1 device under license. The software is not sold.

For warranty disclaimer: see www.mrsafe.eu and the user manual provided with the product.

For any warranty issue, you can contact support@mrsafe.eu

Documents / Resources

	<p>mrSafe SS03 Smart Home Socket Set [pdf] Instruction Manual</p> <p>SS03, Smart Home Socket Set, SS03 Smart Home Socket Set, Home Socket Set, Socket Set</p>
---	---

References

-  [Mr Safe – State-of-the-art safety solutions](#)