



MRCOOL Mini-Stat WiFi Thermostat User Manual

[Home](#) » [MrCOOL](#) » MRCOOL Mini-Stat WiFi Thermostat User Manual 

Contents

- [1 MRCOOL Mini-Stat WiFi Thermostat](#)
- [2 Product Information: MRCOOL Mini-Stat](#)
- [3 Product Usage Instructions: MRCOOL Mini-Stat](#)
- [4 MOUNTING & PLACEMENT](#)
- [5 GETTING HELP](#)
- [6 APP INSTALLATION – iOS / ANDROID](#)
- [7 REGISTRATION PROCESS FOR iOS/ANDROID](#)
- [8 BLUETOOTH ICON](#)
- [9 MRCOOL MINI-STAT – LOCAL CONTROL OPTIONS](#)
- [10 TROUBLESHOOTING SECTION](#)
- [11 LIMITED PRODUCT WARRANTY FOR END USERS](#)
- [12 Documents / Resources](#)
 - [12.1 References](#)
- [13 Related Posts](#)



MRCOOL Mini-Stat WiFi Thermostat

MRCOOL-Mini-Stat-WiFi-Thermostat-product-image

Product Information: MRCOOL Mini-Stat

The MRCOOL Mini-Stat is a smart thermostat designed for controlling air conditioners. It features on-device controls that do not require internet or Bluetooth connectivity. The Mini-Stat has two transmitters located on the front to send IR signals to the air conditioner. It can be connected to a smartphone app, called MRCOOL SmartHVAC, through Bluetooth for enhanced functionality.

Product Usage Instructions: MRCOOL Mini-Stat

Powering Up

To power up the MRCOOL Mini-Stat, ensure it is not exposed to excessive sunlight or heat sources. Connect the device to a power source.

Plug & Play On-Device Controls

The Mini-Stat features on-device controls that can be used without internet or Bluetooth connectivity. Use these controls to adjust settings and operate the air conditioner.

IR Signals – MRCOOL Mini-Stat

The Mini-Stat has two transmitters on the front that send IR signals to the air conditioner. Ensure that the IR signal reaches your air conditioner from either of these transmitters for proper functionality.

Getting Help

If you require assistance with the MRCOOL Mini-Stat or the smartphone app, you can contact support via email at support@cielowigle.com or call +1 (425) 529-5775 (9:00AM – 9:00PM EST, Mon-Fri). For air conditioner and other support, call +1 (270) 366-0457 (7:30AM – 4:30PM CST, Mon-Fri).

Registration Process for iOS/Android

Follow these steps to connect the MRCOOL Mini-Stat to your mobile device using the MRCOOL SmartHVAC app:

1. Ensure Bluetooth is turned on in your phone's settings before starting the registration process.
2. Insert batteries into the Mini-Stat and power it up.
3. On the MRCOOL SmartHVAC app, tap the "Add Device" button on the home screen.
4. Select "MRCOOL Mini-Stat" from the list of devices.
5. Follow the on-screen instructions to connect and configure the Mini-Stat.
6. Customize the Mini-Stat with a name of your choice.
7. Tap "Done" to complete the configuration process.

Once the device is added and configured, it will appear on your home screen in the app. You can access the device settings by tapping on its icon. If prompted, update the device firmware to enhance battery life. Repeat this step for any other installed Mini-Stats to ensure they have the latest updates.

Bluetooth Icon

The Bluetooth icon at the top of the app indicates the connection status:

- If the Bluetooth icon is blue, the Mini-Stat is connected to the app.
- If the Bluetooth icon is grey, the Mini-Stat is not connected to the app.

If we encounter any issues connecting the Mini-Stat to the app, refer to the troubleshooting section on page 9 of the user manual.

MOUNTING & PLACEMENT

MRCOOL Mini-Stat can be wall mounted using the wall mounting kit. Please mount the Mini-Stat on a wall in the AC's line of sight and power it up.

For optimal placement and control:

- Place the MRCOOL Mini-Stat within 16 feet (5 meters) and in the line of sight of your MRCOOL air conditioner or heat pump.
- To avoid deviated sensor readings, do not place the MRCOOL Mini-Stat where it may be exposed to excessive sunlight or other heat sources.

POWERING UP

The MRCOOL Mini-Stat can be powered up using two AA batteries (provided inside the box).

Note: It is strongly advised that only the recommended batteries be used to power up the MRCOOL Mini-Stat.

1C. PLUG & PLAY ON-DEVICE CONTROLS

- Simply power up your MRCOOL Mini-Stat.
- Start controlling your AC using the on-device buttons of MRCOOL Mini-Stat.

Note: These on-device controls do not require any internet or Bluetooth connectivity

IR SIGNALS – MRCOOL MINI-STAT

The MRCOOL Mini-Stat has two transmitters to send IR signals to the air conditioner. Both are located on the front of the MRCOOL Mini-Stat.

Important: Please ensure that the IR signal reaches your air conditioner from either of these transmitters.



GETTING HELP

MRCOOL Mini-Stat & Smartphone App Support

- support@cielowigle.com+1 (425) 529-5775
- (9:00AM – 9:00PM EST, Mon-Fri)

Air Conditioner & All Other Support

- +1 (270) 366-0457
- (7:30AM – 4:30PM CST, Mon-Fri)

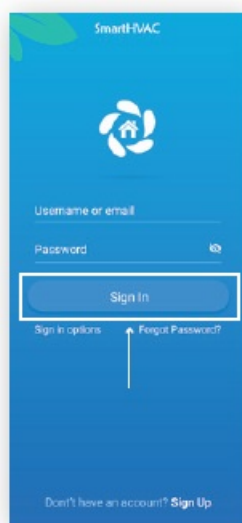
APP INSTALLATION – iOS / ANDROID

- Go to the App Store / Play Store.
- In the 'Search' section type 'MRCOOL SmartHVAC'.
- Once 'MRCOOL SmartHVAC' App is displayed, tap the 'GET' button.
- Open the App after installation is complete.



MRCOOL SmartHVAC App

- You can either create a new user account or login as an existing user.
- As an existing user, enter username and password and tap the 'Sign In' button.
- If you are a new user, tap the 'Sign Up' button and fill in the information.

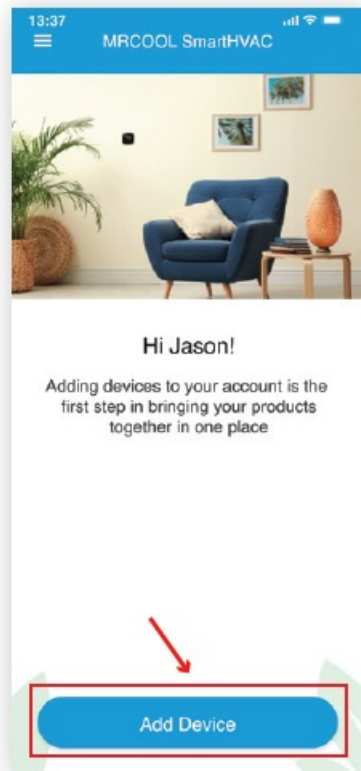


Login Screen

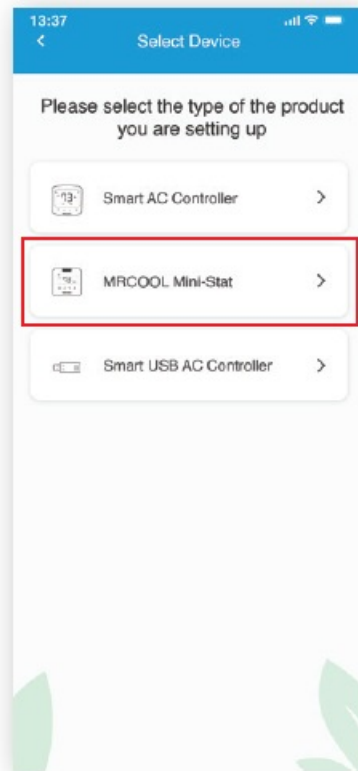
REGISTRATION PROCESS FOR iOS/ANDROID

Registration process is meant to connect the MRCOOL Mini-Stat to your mobile's Bluetooth through the 'MRCOOL SmartHVAC' App.

- After successful login, you are at the home screen. Tap the 'Add Device' button as shown in the red box.
Note: Please turn on the Bluetooth on your phone before starting the registration process to ensure seamless registration. You may disable it later.
- Select 'MRCOOL Mini-Stat' from the list of devices.

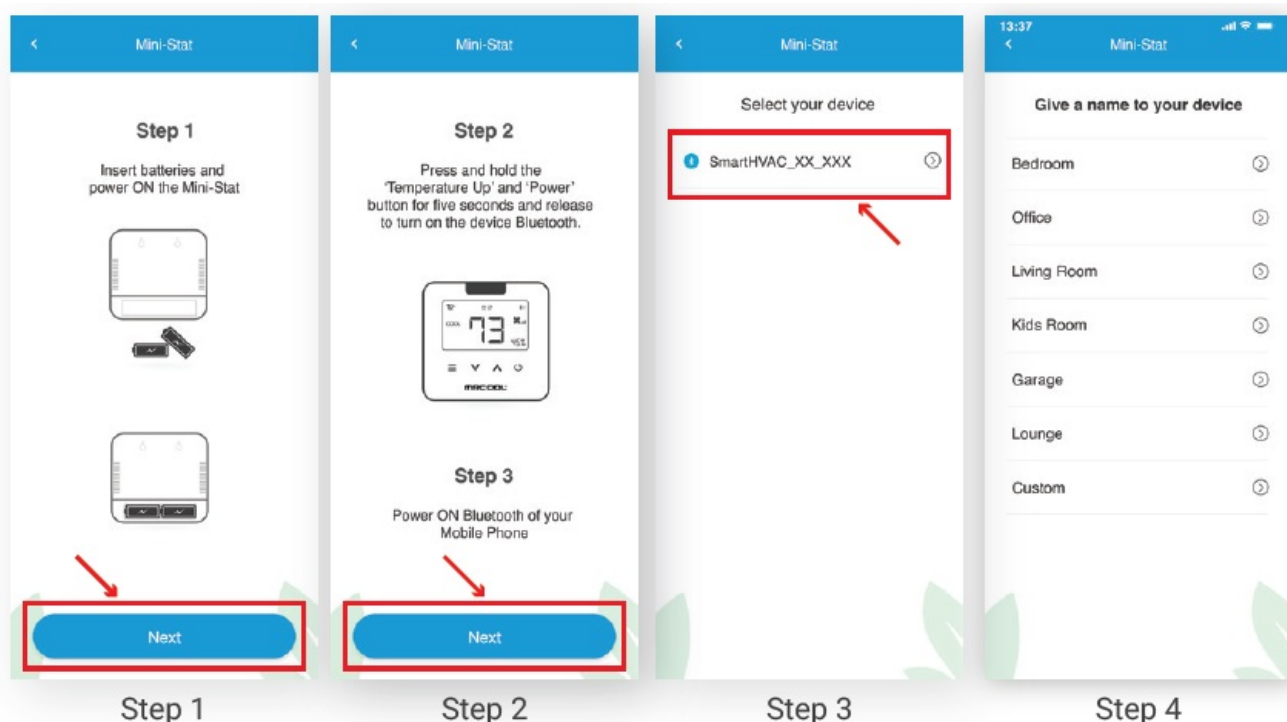


i

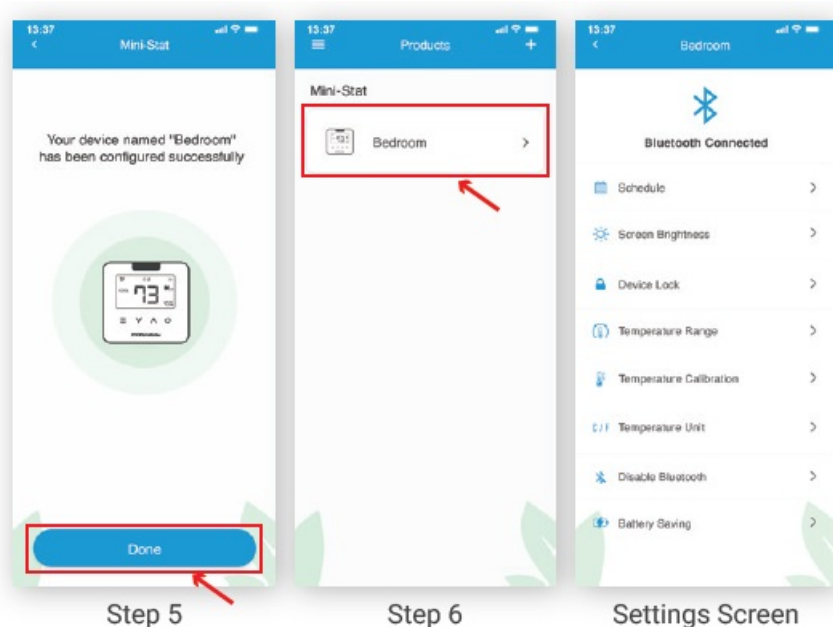


ii

- **Step 1:** Insert batteries and Power-up the MRCOOL Mini-Stat. Tap on “Next” in the app.
- **Step 2:** Press and hold the ‘Temperature Up’ and ‘Power’ button for five seconds and release to turn on the device Bluetooth.
The Bluetooth icon will appear on the screen of the device.
Tap on “Next” in the app.
- **Step 3:** On the ‘MRCOOL SmartHVAC’ App, tap on the Bluetooth ID for the MRCOOL Mini-Stat (SmartHVAC_XX_XXX).
Note: In case of multiple active MRCOOL Mini-Stat devices, the ‘MRCOOL SmartHVAC’ App will list down all MRCOOL Mini-Stat devices which are currently in broadcast mode. Select the appropriate device.
- **Step 4:** Customize your MRCOOL Mini-Stat with a name of your choice (for example, Bedroom, Lounge, Office, etc.).

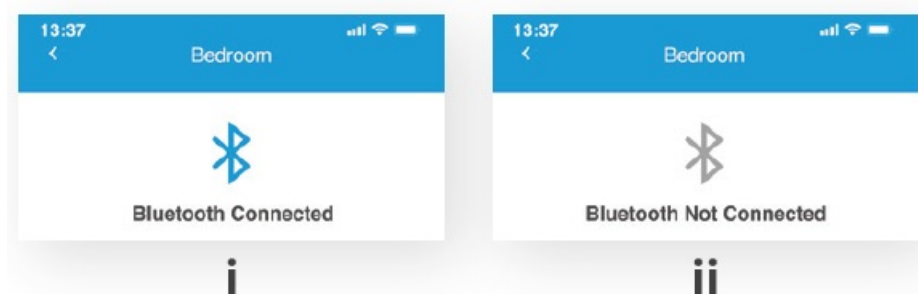


- **Step 5:** Your MRCOOL Mini-Stat has been configured successfully. Tap on 'Done'. Step 6: After successful configuration, your device will appear on your home screen. Tip: Tap on your device to enter the 'Settings' menu. From the 'Settings' screen, you can change the device settings according to your preferences. **IMPORTANT:** Once the device has been added and the device icon is clicked, you may be prompted with a message to update the device firmware. Follow the instructions given. This update is to enhance the battery life of the Mini-Stat. Follow this step with any other Mini-Stats that have already been installed to ensure they have the latest updates.

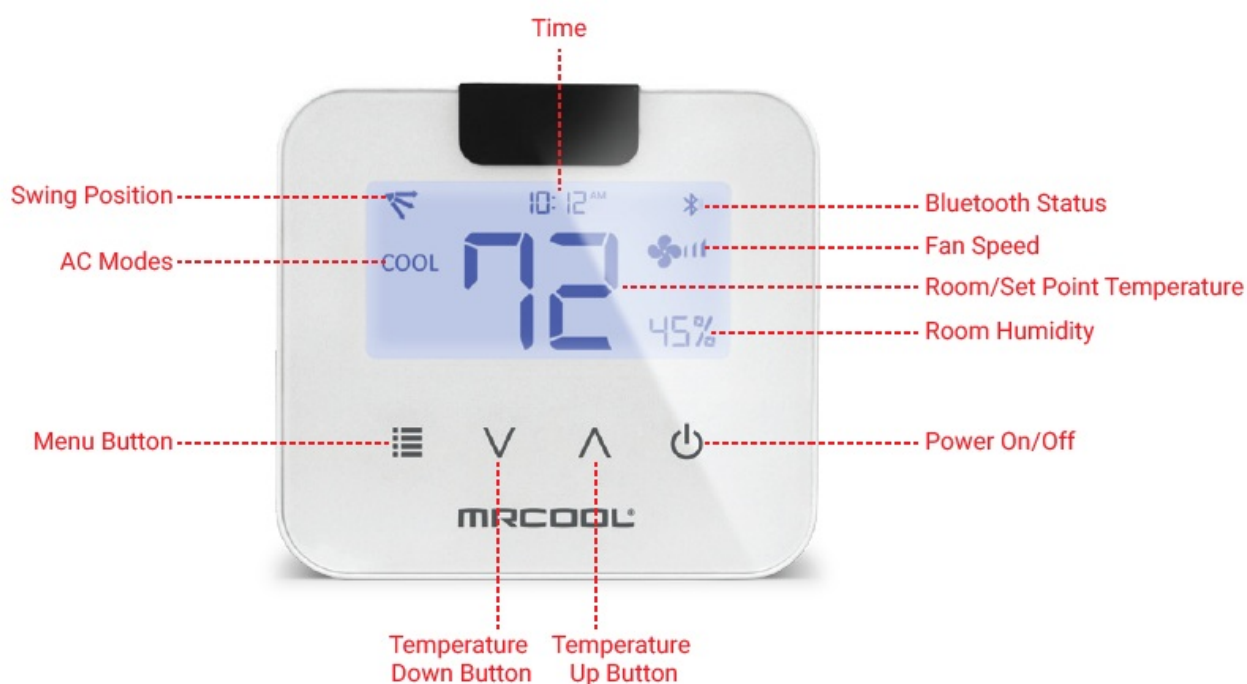


BLUETOOTH ICON

- **Bluetooth icon at the top is blue** – MRCOOL Mini-Stat is connected to the App.
- **Bluetooth icon at the top is grey** – MRCOOL Mini-Stat is not connected to the App. To connect MRCOOL Mini-Stat to the App, go to troubleshooting section at page 9.



MRCOOL MINI-STAT – LOCAL CONTROL OPTIONS



Adjusting the temperature of your AC:

Use the up or down arrows to set the temperature of your choice.

Changing the mode of your AC:

Touch the menu button once. The mode icon will start blinking. Use the up or down arrows to select the mode (e.g. Cool, Heat etc.). Your selected mode is set.

Changing the fan speed:

Touch the menu button twice. The fan speed icon will start blinking. Use the up or down arrows to change the fan speed. Your selected fan speed is set.

Adjusting the swing position:

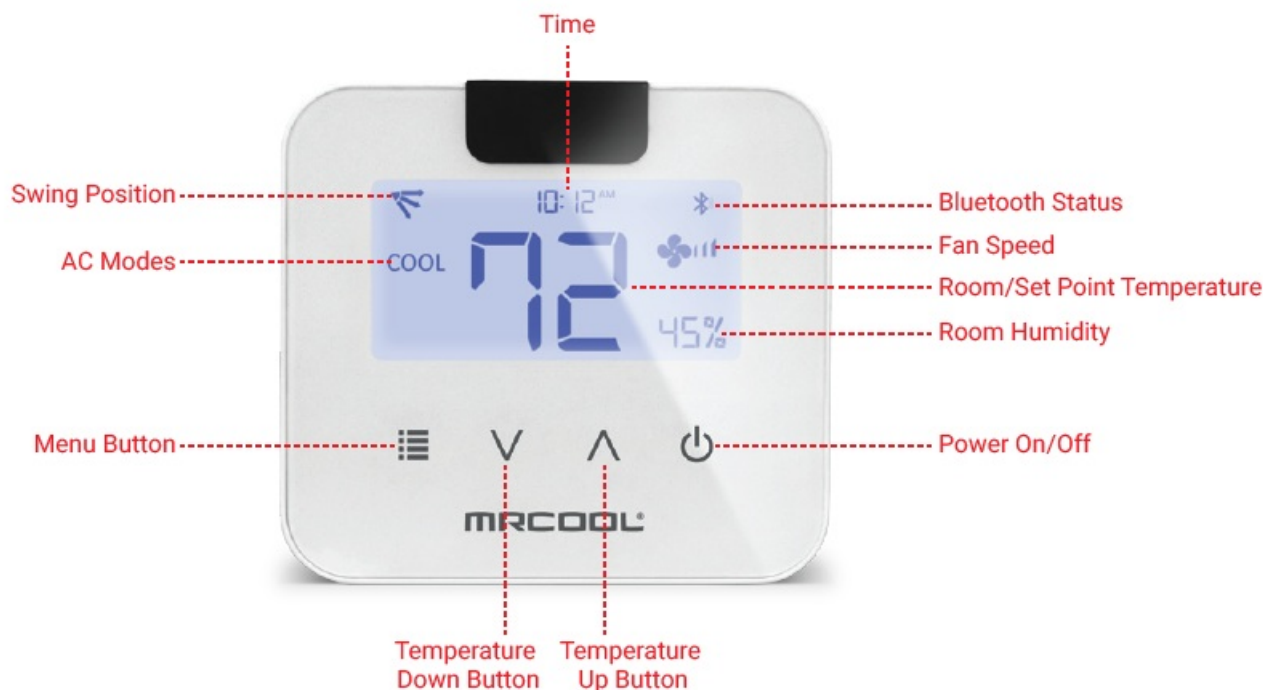
Touch the menu button thrice. The swing position icon will start blinking.

Press the 'Temperature Up' arrow to turn 'auto swing' on or off.

Press the 'Temperature Down' arrow to switch between the different swing positions.

Enabling/Disabling Bluetooth of MRCOOL Mini-Stat:

Press and hold the 'Temperature Up' and 'Power' Button for five seconds and release to turn on/off the device Bluetooth.



Lock/Unlock MRCOOL Mini-Stat Screen:

Press and hold the 'Temperature Up' and 'Temperature Down' Buttons for five seconds and release.

Switch between Fahrenheit and Celsius:

Press and hold the 'Temperature Down' and 'Power' Buttons for five seconds and release.

Freeze Protection (FP) Mode:

Press and hold the 'Menu' and 'Temperature Down' Buttons for five seconds and release.

UV/Fresh Mode:

Press and hold the 'Power' Button for five seconds and release.

Turbo Mode:

Press and hold the 'Temperature Up' Button for five seconds and release.

MRCOOL AC Display Light (LED) On/Off :

Press and hold the 'Temperature Down' Button for five seconds and release. MRCOOL AC Sleep Mode:

Press and hold the 'Menu' Button for five seconds and release.

TROUBLESHOOTING SECTION

- Case 1:** No Bluetooth icon on device/Bluetooth icon on 'MRCOOL SmartHVAC' App is grey – Device Bluetooth is turned off.
 Simultaneously hold the 'Temperature Up' and 'Power' button on the MRCOOL Mini-Stat for five seconds to power on the Bluetooth.
 The Bluetooth icon will appear on the screen of the device.
- Case 2:** Bluetooth icon on device/Bluetooth icon on 'MRCOOL SmartHVAC' App is grey (❌) – Device is in broadcast (AP) mode and not connected to the 'MRCOOL SmartHVAC' App. Please complete registration process as per section 3 of this manual.
- Case 3:** Bluetooth icon with broadcast symbols – Device Bluetooth is connected with smartphone. (❌)

Note: The Bluetooth on MRCOOL Mini-Stat will automatically turn off after 15 minutes of inactivity. To turn it back on, refer to Case 1.

The device will now automatically connect to your 'MRCOOL SmartHVAC' App.



Case 1



Case 2



Case 3

LIMITED PRODUCT WARRANTY FOR END USERS

1. MRCOOL warrants to the owner of the enclosed MRCOOL Mini-Stat that the MRCOOL Mini-Stat contained in this box ("Product") will be free from defects in materials and workmanship for a period of one (1) years from the date of delivery, following the original retail purchase (the "Warranty Period").
2. If the Product fails to conform to this Limited Warranty during the Warranty Period, MRCOOL. will, at its sole discretion, either repair or replace any defective Product or component.
3. Repair or replacement may be made with a new or refurbished product or components, at MRCOOL.'s sole discretion.
4. If the Product or a component incorporated within it is no longer available, MRCOOL. may replace the Product with a similar product of similar function, at MRCOOL.'s sole discretion. This is your sole and exclusive remedy for breach of this Limited Warranty.
5. Any Product that has either been repaired or replaced under this Limited Warranty will be covered by the terms of this Limited Warranty for the longer of ninety (90) days from the date of delivery or the remaining Warranty Period. This Limited Warranty is non-transferable from the original purchaser to subsequent owners and the Warranty Period will not be extended in duration or expanded in coverage for any such transfer.
6. **WARRANTY CONDITIONS; HOW TO GET SERVICE IF YOU WANT TO CLAIM UNDER THIS LIMITED WARRANTY**

Before being able to claim under this Limited Warranty, the owner of the Product must (a) notify MRCOOL. of the intention to claim by visiting our website during the Warranty Period and providing a description of the alleged failure, and (b) comply with MRCOOL.'s return shipping instructions.

7. WHAT THIS LIMITED WARRANTY DOES NOT COVER

This warranty does not cover the following (collectively "Ineligible Products"): Products marked as "sample" or sold "AS IS"; or Products that have been subject to: (a) modifications, alterations, tampering, or improper maintenance or repairs; (b) handling, storage, installation, testing, or use not in accordance with the User's Guide or other instructions provided by MRCOOL ; (c) abuse or misuse of the Product; (d) breakdowns, fluctuations, or interruptions in electric power or the telecommunications network; or (e) Acts of God, including

lightning, flood, tornado, earthquake, or hurricane. This warranty does not cover consumable parts, unless damage is due to defects in materials or workmanship of the Product, or software (even if packaged or sold with the product). Unauthorized use of the Product or software can impair the Product 's performance and may invalidate this Limited Warranty.

8. DISCLAIMER OF WARRANTIES

EXCEPT AS STATED ABOVE IN THIS LIMITED WARRANTY, AND TO THE MAXIMUM EXTENT PERMITTED BY APPLICABLE LAW, MRCOOL. DISCLAIMS ALL EXPRESS, IMPLIED, AND STATUTORY WARRANTIES AND CONDITIONS WITH RESPECT TO THE PRODUCT, INCLUDING THE IMPLIED WARRANTIES OF MERCHANTABILITY, AND FITNESS FOR A PARTICULAR PURPOSE. TO THE MAXIMUM EXTENT PERMITTED BY APPLICABLE LAW. MRCOOL. ALSO LIMITS THE DURATION OF ANY IMPLIED WARRANTIES OR CONDITIONS TO THE DURATION OF THIS LIMITED WARRANTY.

9. LIMITATION OF DAMAGES

IN ADDITION TO THE ABOVE WARRANTY DISCLAIMERS, IN NO EVENT WILL MRCOOL. BE LIABLE FOR ANY CONSEQUENTIAL, INCIDENTAL, EXEMPLARY, OR SPECIAL DAMAGES, INCLUDING ANY DAMAGES FOR LOST DATA OR LOST PROFITS, ARISING FROM OR RELATING TO THIS LIMITED WARRANTY OR THE PRODUCT, AND MRCOOL.'S TOTAL CUMULATIVE LIABILITY ARISING FROM OR RELATED TO THIS LIMITED WARRANTY OR THE PRODUCT WILL NOT EXCEED THE ORIGINAL PRICE OF THE PRODUCT.

10. LIMITATION OF LIABILITY

MRCOOL ONLINE SERVICES ("SERVICES") PROVIDE YOU INFORMATION ("PRODUCT INFORMATION") REGARDING YOUR MRCOOL.'S PRODUCTS OR OTHER PERIPHERALS CONNECTED TO YOUR PRODUCTS ("PRODUCT PERIPHERALS"). THE TYPE OF PRODUCT PERIPHERALS THAT MAY BE CONNECTED TO YOUR PRODUCT MAY CHANGE FROM TIME TO TIME WITHOUT LIMITING THE GENERALITY OF THE DISCLAIMERS ABOVE. ALL PRODUCT INFORMATION IS PROVIDED FOR YOUR CONVENIENCE, "AS IS", AND "AS AVAILABLE". MRCOOL. DOES NOT REPRESENT, WARRANT, OR GUARANTEE THAT PRODUCT INFORMATION WILL BE AVAILABLE, ACCURATE, OR RELIABLE OR THAT PRODUCT INFORMATION OR USE OF THE SERVICES OR PRODUCT WILL PROVIDE SAFETY IN YOUR HOME. YOU USE ALL PRODUCT INFORMATION, THE SERVICES, AND THE PRODUCT AT YOUR OWN DISCRETION AND RISK.

YOU WILL BE SOLELY RESPONSIBLE FOR, AND MRCOOL. DISCLAIMS ANY ASSOCIATED DAMAGES, INCLUDING TO YOUR WIRING, FIXTURES, ELECTRICITY, HOME, PRODUCT, PRODUCT PERIPHERALS, COMPUTER, MOBILE DEVICE, AND ALL OTHER ITEMS AND PETS IN YOUR HOME, RESULTING FROM YOUR USE OF THE PRODUCT INFORMATION, SERVICES, OR PRODUCT. PRODUCT INFORMATION PROVIDED IS NOT INTENDED AS A SUBSTITUTE FOR DIRECT MEANS OF OBTAINING THE INFORMATION. IN ADDITION TO THE ABOVE, IN NO EVENT WILL MRCOOL BE LIABLE FOR ANY CONSEQUENTIAL, INCIDENTAL, EXEMPLARY, ACCIDENTAL, OR SPECIAL DAMAGES, INCLUDING ANY DAMAGES ARISING DUE TO THE USAGE OF PRODUCT OR PRODUCT PERIPHERALS.

11. VARIATIONS THAT MIGHT APPLY TO THIS LIMITED WARRANTY

Some jurisdictions do not allow limitations on how long an implied warranty lasts or exclusions/limitations on incidental or consequential damages, so some of the limitations set out above may not apply to you.

Supplier

MRCOOL

48 Remington Way, Hickory, KY 42051 www.mrcool.com

Technical Specifications

MRCOOL Mini-Stat for Air Conditioners & Heat Pumps Model: MS101WA

Operating Voltage: 3.3V DC

Processor: ARM 32bit

Contains FCC ID: 2ABN2-RSBR02ABR

This device is compatible with part 15 of the FCC Rules.

Operation is subjected to the following two conditions:

1. This device may not cause harmful interference, and
2. This device must accept any interference received, including interference that may cause undesired operation.

For any queries, visit: www.mrcool.com

Documents / Resources



[MRCOOL Mini-Stat WiFi Thermostat](#) [pdf] User Manual

Mini-Stat WiFi Thermostat, Mini-Stat, WiFi Thermostat, Thermostat

References

- [MRCOOL – Comfort Made Simple](#)