



MPOWHC5 Bluetooth Headset User Manual

[Home](#) » [MPow](#) » MPOWHC5 Bluetooth Headset User Manual 



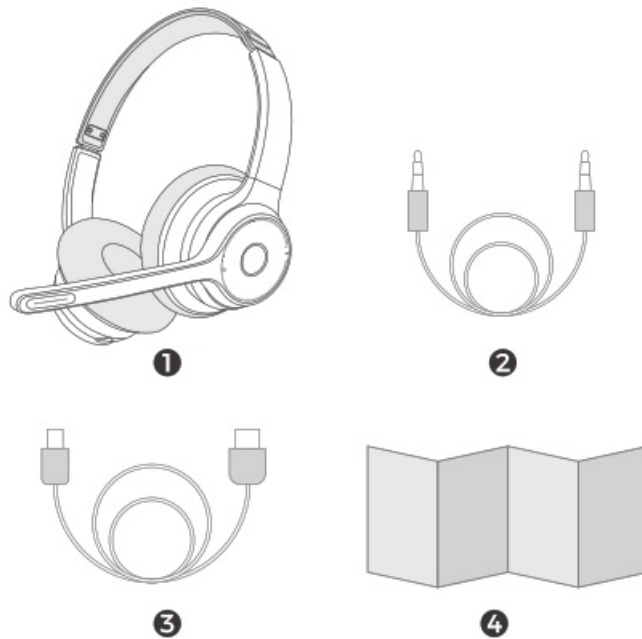
Bluetooth Headset User Manual



Contents

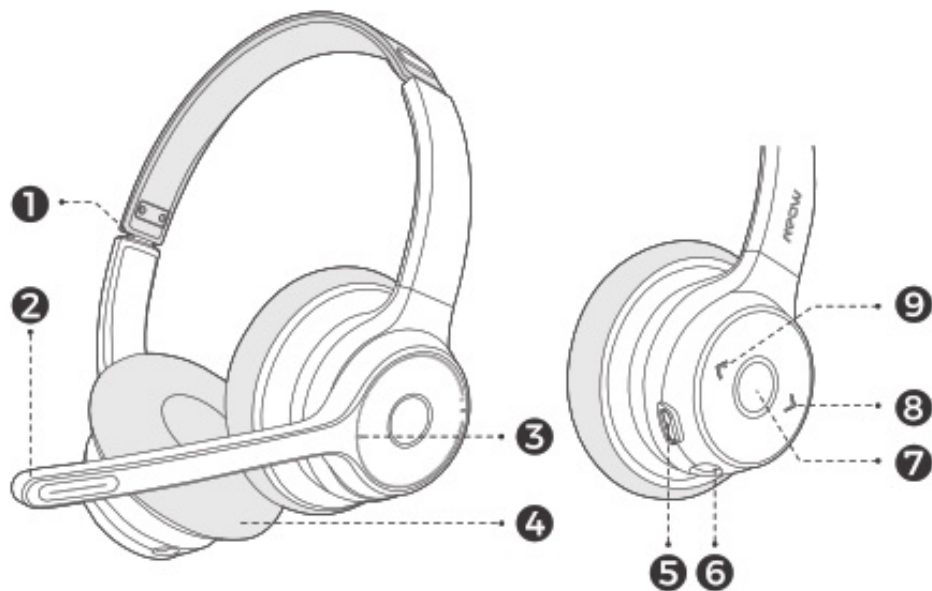
- 1 Package
- 2 Diagram
- 3 Specification
- 4 Function Button
- 5 Charging
- 6 Connection With Two Devices
- 7 Call/Music Setting on PC
- 8 Documents / Resources
- 9 Related Posts

Package



- Headset 1
- 3.5mm Audio Cable
- Micro USB Cable
- User Manual.1

Diagram

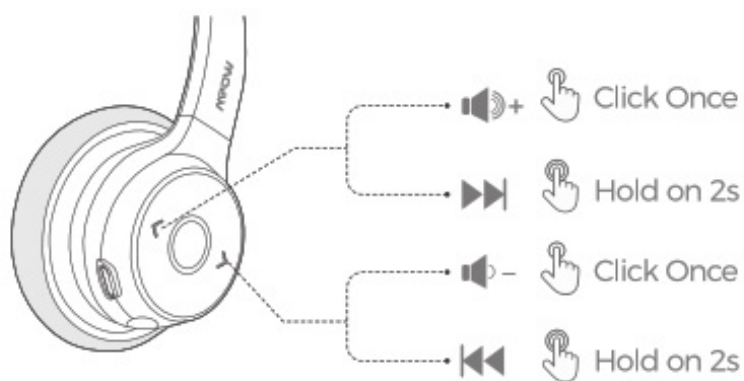
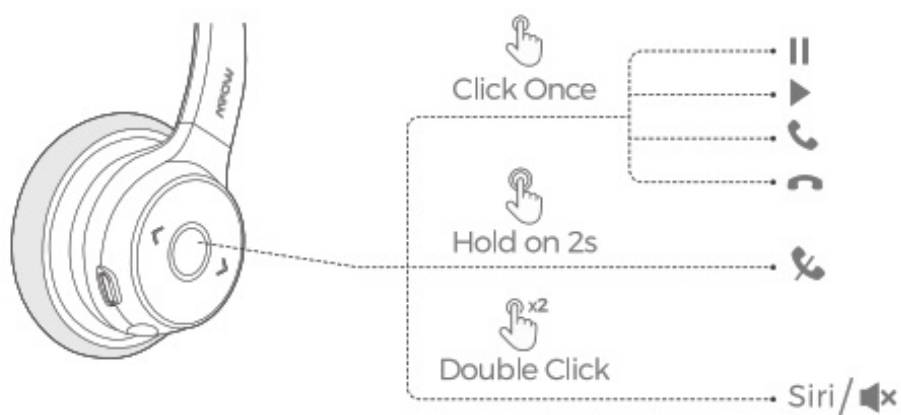
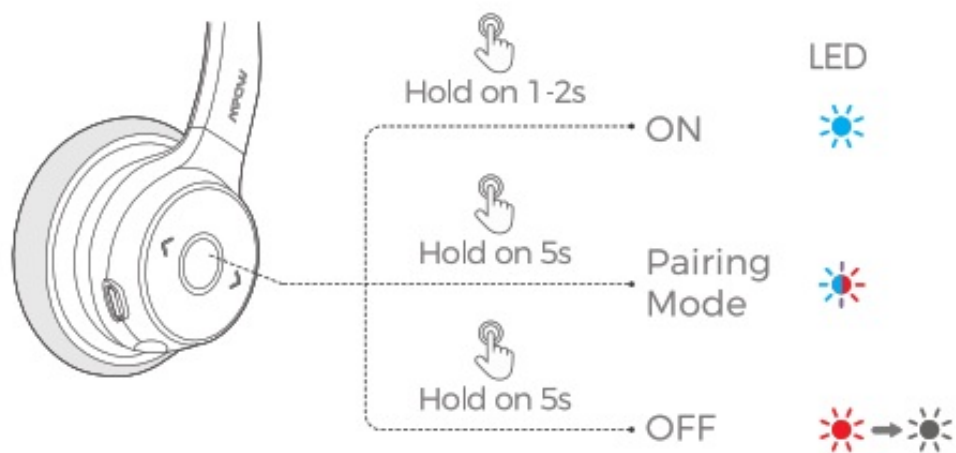


1. Adjustable Headband
2. MIC
3. MIC
4. Comfortable Earpad
5. Micro USB Charging Interface
6. 3.5mm Audio Port
7. MFB
8. Previous Track /Volume -
9. Next Track /Volume +

Specification

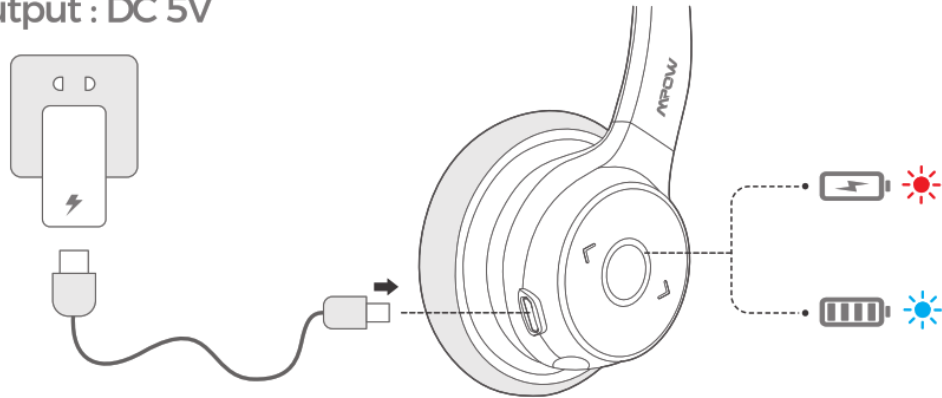
Speaker Sensitivity 126±3dB	MIC Sensitivity -38± 3dB
Standby Time 200H+	Talking Time 22H
Charging Time 1.5-2H	Battery Capacity 230mAh
Charging Input 5V =180mA	

Function Button

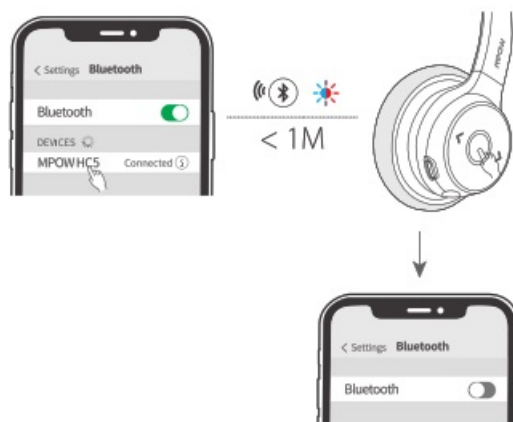


Charging

Output : DC 5V



Connection With Two Devices



1. Pair with your first device.
2. Turn off the Bluetooth of the first device
3. Hold on the MFB for 5s to enter into pairing mode and pair with your second device. The blue light will flash slowly after successfully connected.
4. Turn on the Bluetooth of the first device, and manually connect "MPOW HC5" in the paired list After the connection is successful, your headset is connected to the two Bluetooth devices at the same time (If the first device is the 105. then you need to manually connect If it is Android. it can be automatically connected.)

Call/Music Setting on PC

1. If you want to make calls on the Windows system with this headset please follow the steps below and make sure you've connected to the headset successfully.
After pairing the headset to your PC. enter the Control Panel — Sound —Set Bluetooth Hands-free Audio as the default audio device Set Bluetooth Audio Input Device as the default microphone device Once the default device has been set correctly. please confirm that the default device of the calling software you use also have been set correctly (if there is no sound for the first time use, double-click the MFB to activate the headset).
2. If you want to listen to music on the Windows system with this headset please follow the steps below and make sure you've connected to the headset successfully. After pairing the headset to your PC, enter the Control Panel —Sound—Set Bluetooth Audio Renderer as the default audio device Set Bluetooth Audio Input Device as the default microphone device

Q&A

1. How to Pair if Failed? In standby mode, hold the MFB and Volume+ button simultaneously for 5s to clear the pairing record. Then hold on to the MFB until the blue and red indicator lights flash alternatively to pair again.

2. Any Password Needed when Pairing?

If needed, please try 0000 or 8888, 1111, 1234.

3. HOW Can I Charge My Headset?

You can charge it via a USB cable.

4. How to Restart the Headset if Failed?

Try to charge it via USB cable and then restart it

FCC Statement

Any changes or modifications not expressly approved by the party responsible for compliance could void the user's authority to operate the equipment. This device complies with part 15 of the FCC Rules. Operation is subject to the following two conditions: (1) This device may not cause harmful interference. and (2) this device must accept any interference received, including interference that may cause undesired operation.


FCC Radiation Exposure Statement

This equipment complies with FCC radiation exposure limits set forth for an uncontrolled environment.

This equipment has been tested and found to comply with the limits for a Class B digital device, pursuant to part 15 of the FCC Rules. These limits are designed to provide reasonable protection against harmful interference in a residential installation. This equipment generates, uses, and can radiate radio frequency energy. If not installed and used in accordance with the instructions, may cause harmful interference to radio communications. However, there is no guarantee that interference will not occur in a particular installation. If this equipment does cause harmful interference to radio or television reception, which can be determined by turning the equipment off and on, the user is encouraged to try to correct the interference by one or more of the following measures:

- Reorient or relocate the receiving antenna.
- Increase the separation between the equipment and receiver.
- Connect the equipment into an outlet on a circuit different from that to which the receiver is connected.
- Consult the dealer or an experienced radio/TV technician for help.

Documents / Resources

	MPOW MPOWHC5 Bluetooth Headset [pdf] User Manual BH359A, 2AMH2-BH359A, 2AMH2BH359A, MPOWHC5, Bluetooth Headset, MPOWHC5 Bluetooth Headset, Headset
---	--