



MPOW R9 Bluetooth Speaker User Manual

[Home](#) » [MPow](#) » MPOW R9 Bluetooth Speaker User Manual 

MPOW SOUNDHOT R9 BLUETOOTH SPEAKER



Contents

- [1 Package List](#)
- [2 Specification](#)
- [3 Diagram](#)
- [4 Power ON/OFF](#)
- [5 Pairing](#)
- [6 Music](#)
- [7 Phone](#)
- [8 Charging](#)
- [9 Switch Between 2 Bluetooth Devices](#)
- [10 Tws Connection](#)
- [11 Party cast Mode](#)
- [12 Related Posts](#)

Package List

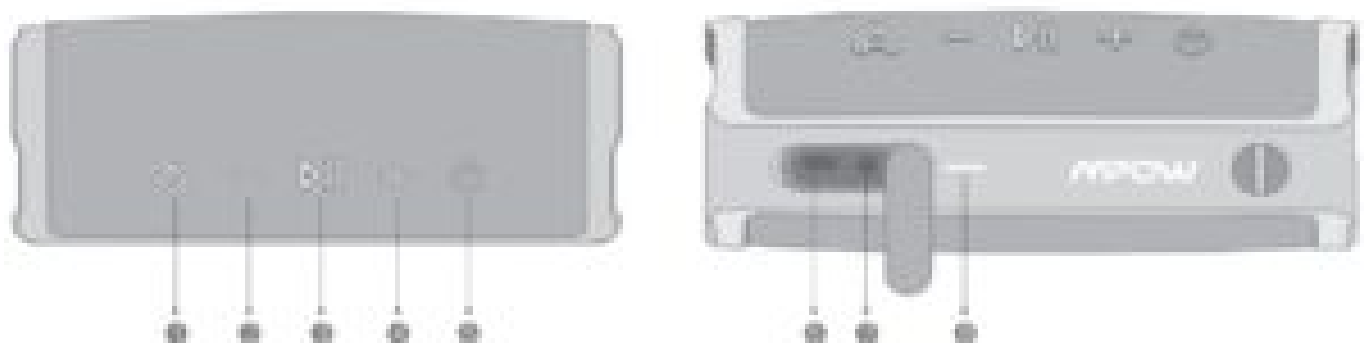


1. Mpow Bluetooth speaker
2. Thank-you card
3. Charging cable
4. User manual

Specification

Rating Name	Bluetooth Version	Signal Distance	Compatible Protocol	Input
Mpow Soundhub D9	V5.0	100 R(30m)	A2DP/WiFi/BT/HSP	5V=2A

Diagram



1. Bluetooth/IW5,Broadcast Button
2. Volume-/ Previous track

3. Pause/Play
4. Volume+/Next track
5. Power button
6. Type-C charging port
7. Aux-In Port
8. Power/Bluetooth indicator light

Power ON/OFF



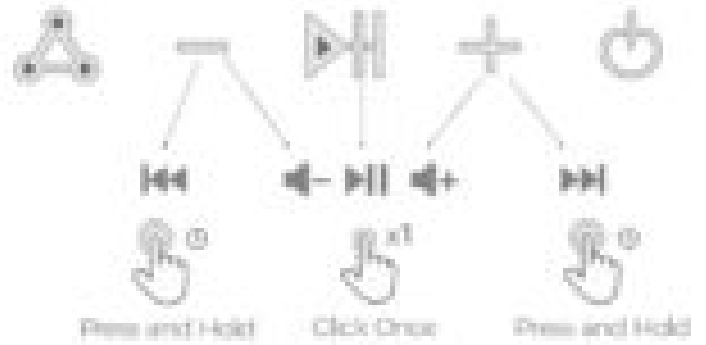
Pairing



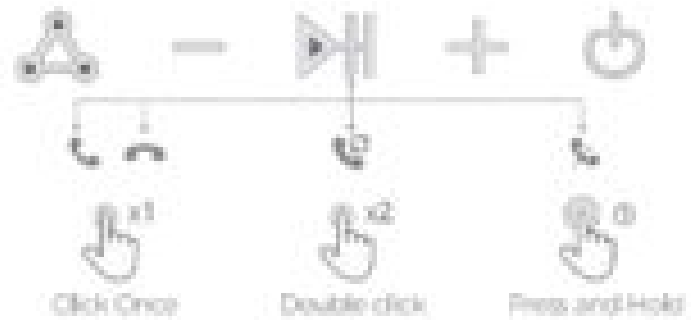
Bluetooth
< 3.3ft (1m)



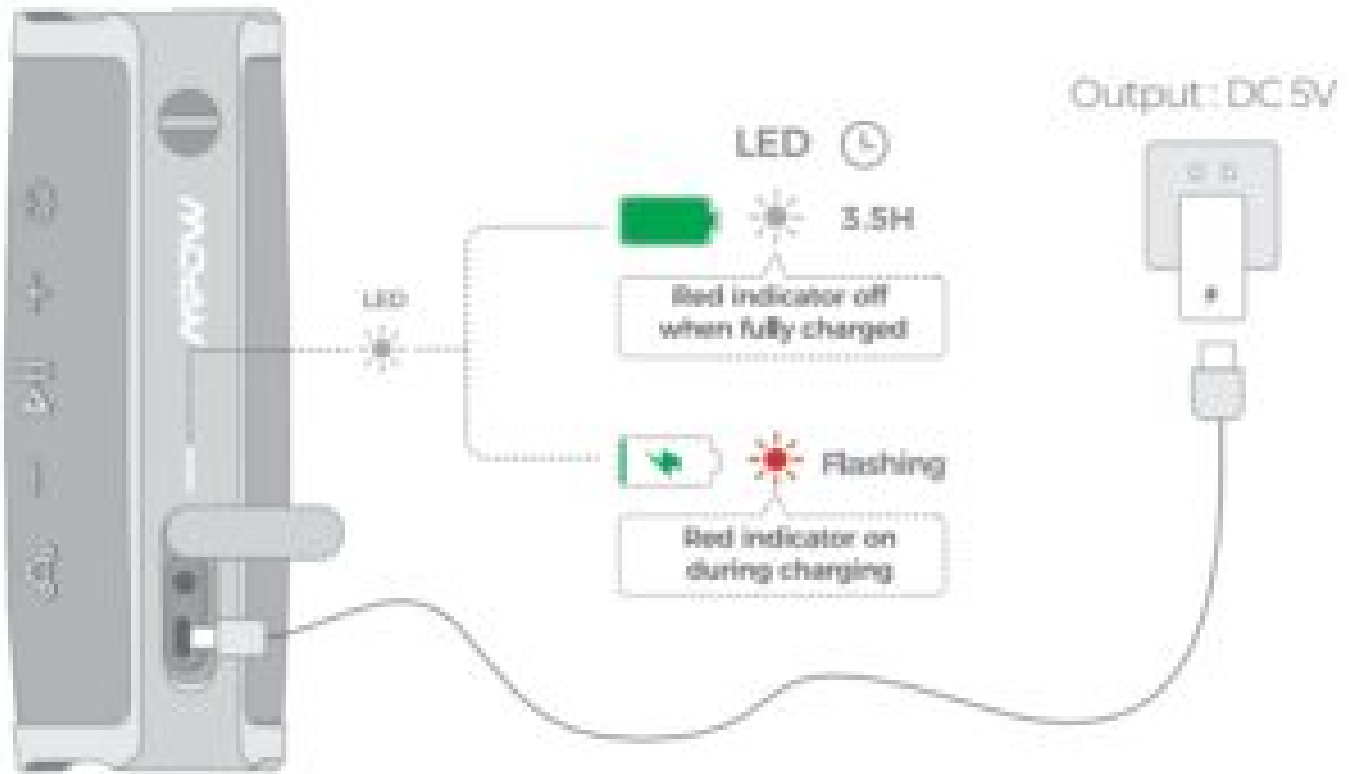
Music



Phone

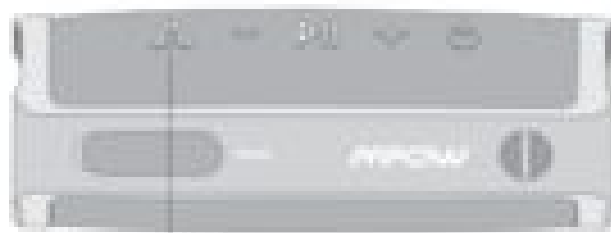


Charging



Switch Between 2 Bluetooth Devices

Step 1



Phone A



Step 2



+ 3.5h (1m)

Phone B



Twos Connection



Speaker 1



Speaker 2



Speaker 1



Speaker 2

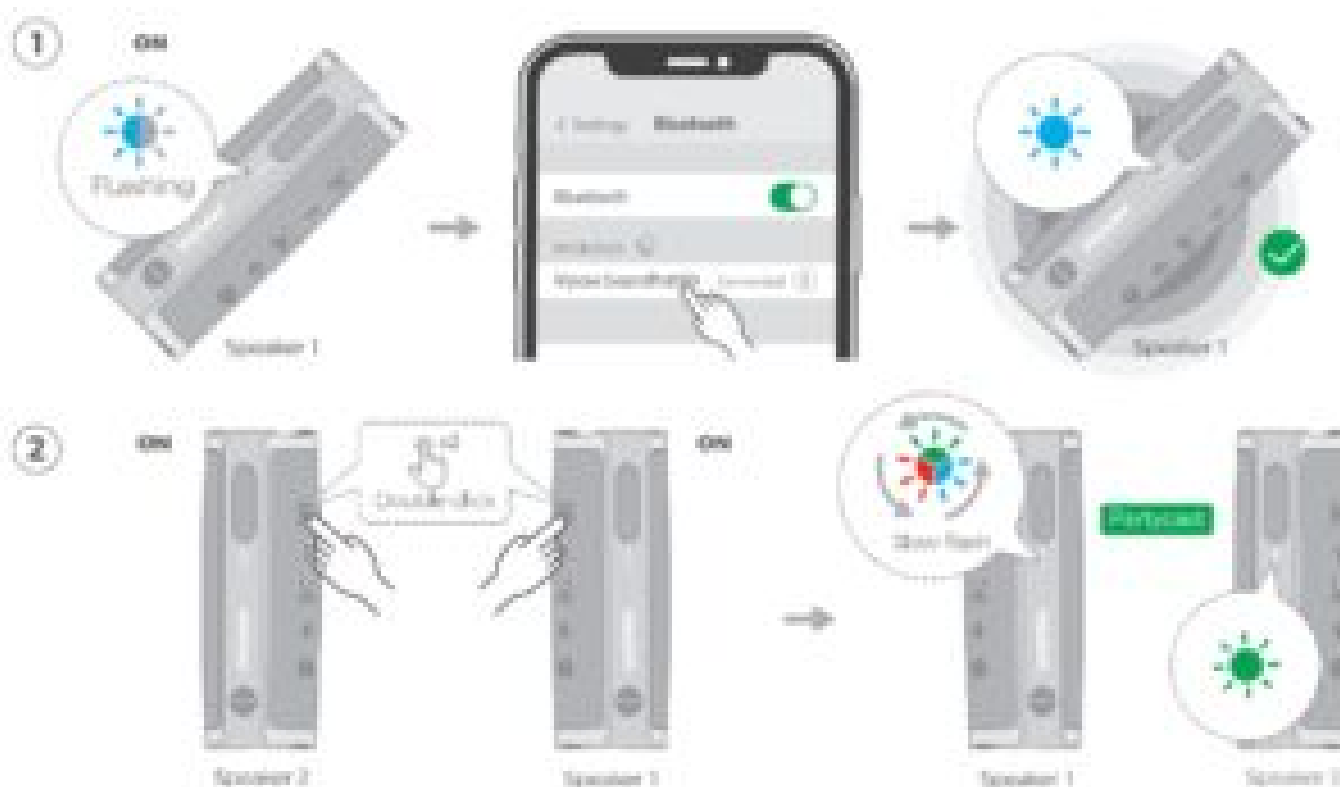


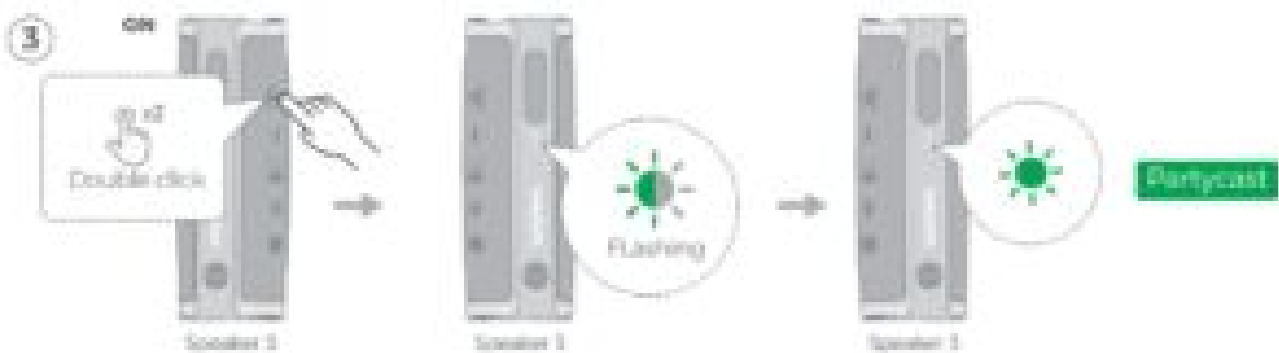
Note: Click the  button on either speaker to turn off TWS mode.



1. Turn on 2 Mpcm sound hot R9 speakers. entering pairing mode with blue indicators flashing,
2. Click the A button on both speakers simultaneously to start TWS pairing.
3. TWS connection is completed with the blue indicators of both speakers staying on
4. Search and connect Mpow Soundhot R9 on the phone to finish the Bluetooth pairing and have 2-channel stereo sound.

Note: Click the A button on either speaker to turn off TWS mode.

Party cast Mode





1. Turn on Speaker 1, entering pairing mode with blue indicator flashing: Connect Mpow Soundhot R9 (Speaker 1) on the phone with blue indicator staying still. (Speaker 1 is the dominant speaker)
2. Turn on Speaker 2 and click twice the  button simultaneously on both Speaker 1 and 2. The Party Cast mode would be turned on with the green red and blue indicators of Speaker 1 flashing alternately while the green light of speaker 2 stays still.
3. Turn on Speaker 3, and click twice the  button with its green indicator flashing; The Party Cast mode would be turned on while the green light of Speaker 3 stays still.
4. Repeat the last step to add more speakers (up to 100), and enjoy Part-cast mode.

Note:

The first connected speaker is the dominant one and its 3-color indicators flash on Party Cast mode. Other speakers would shutdown if the dominant Speaker 1 is turned off. PartyCast mode does not support auto - reconnecting which requires you to add the other speaker manually every time.

MPOW R9 Bluetooth Speaker User Manual – [Optimized PDF](#)

MPOW R9 Bluetooth Speaker User Manual – [Original PDF](#)