



Mpow MX3 User Manual

[Home](#) » [MPow](#) » Mpow MX3 User Manual 





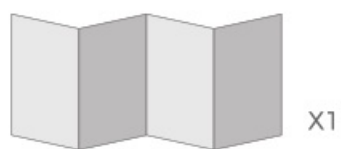
MPOW MX3

TRUE WIRELESS EARBUDS

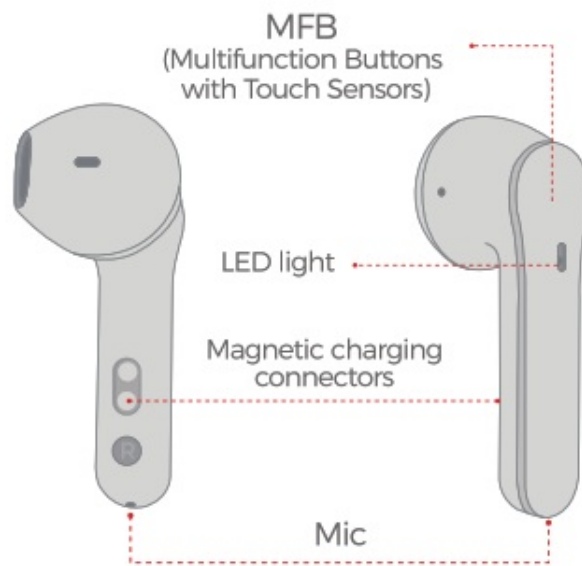
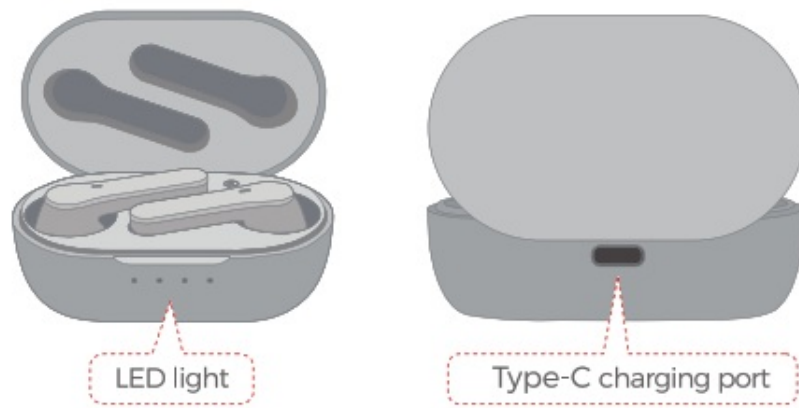
Contents

- 1 [PACKING LIST](#)
- 2 [DIAGRAM](#)
- 3 [POWER ON](#)
- 4 [POWER OFF](#)
- 5 [PAIRING](#)
- 6 [MUSIC](#)
- 7 [INCOMING CALL](#)
- 8 [MUSIC & INCOMING CALL & Siri](#)
- 9 [RESET](#)
- 10 [CHARGING](#)
- 11 [CORRECT DISPOSAL OF THIS PRODUCT](#)
- 12 [FCC STATEMENT](#)
- 13 [Documents / Resources](#)
- 14 [Related Posts](#)

PACKING LIST

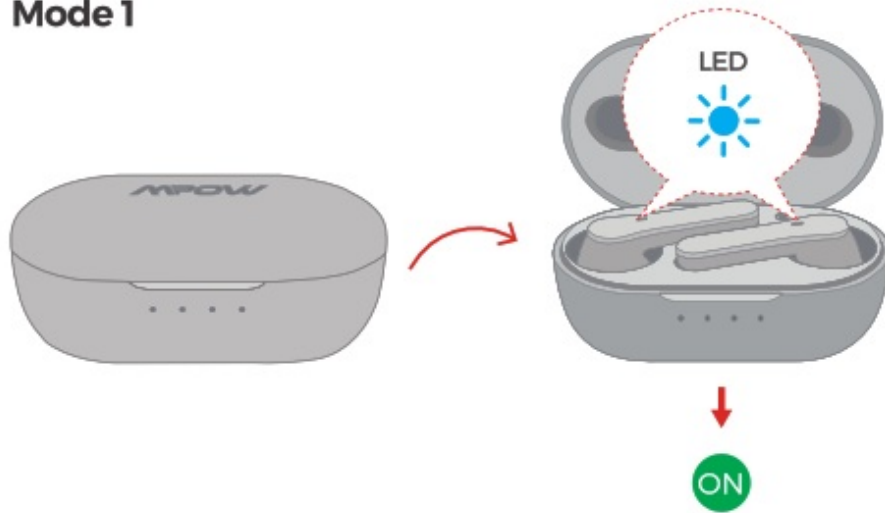


DIAGRAM

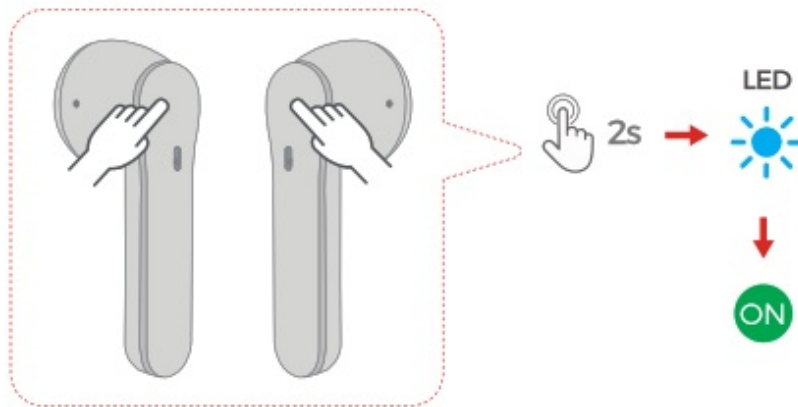


POWER ON

Mode 1



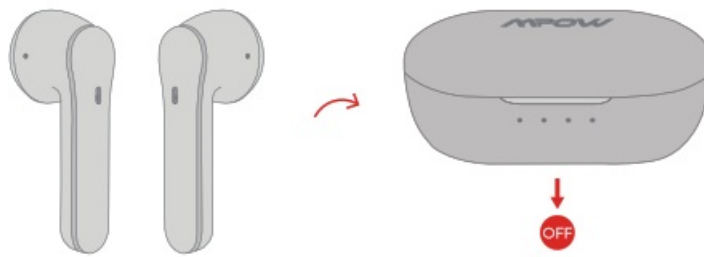
Mode 2



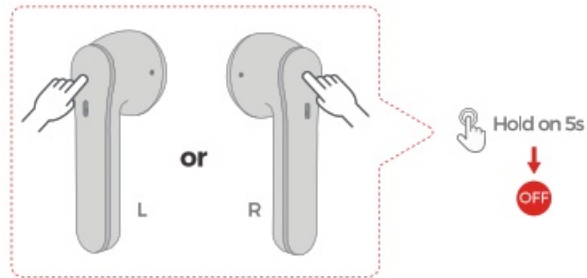
1. The earphones automatically turn on (with blue LED light flashing) and start pairing when you open the charging case.
2. In the shutdown status and when the earphones are not in the charging case, simultaneously press and hold the MFB of both earbuds for 2 seconds to power on (with the blue LED light flashing).

POWER OFF

Mode 1

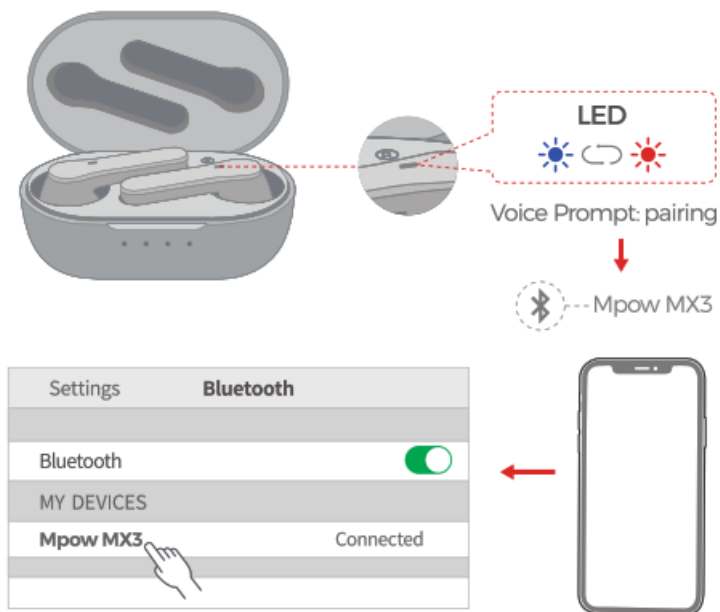


Mode 2



1. Put the earphones back in the charging case and close the case to turn them off.
2. If the earphones are not in the charging case just press and hold the MFB of either earbud for 5 seconds to power them off. (Mode 2 cannot be conducted during music playing or calling.)

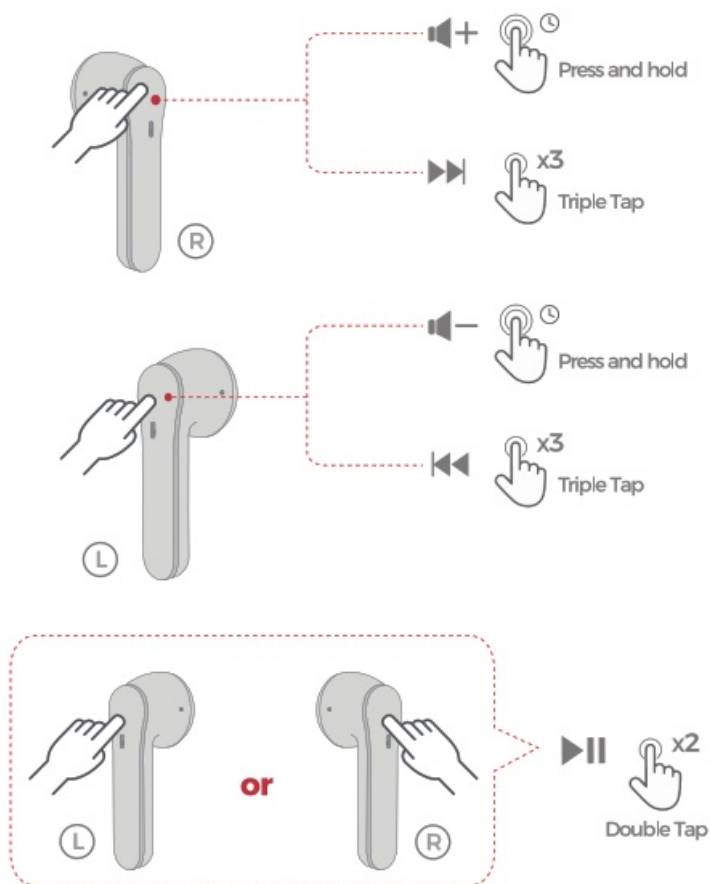
PAIRING



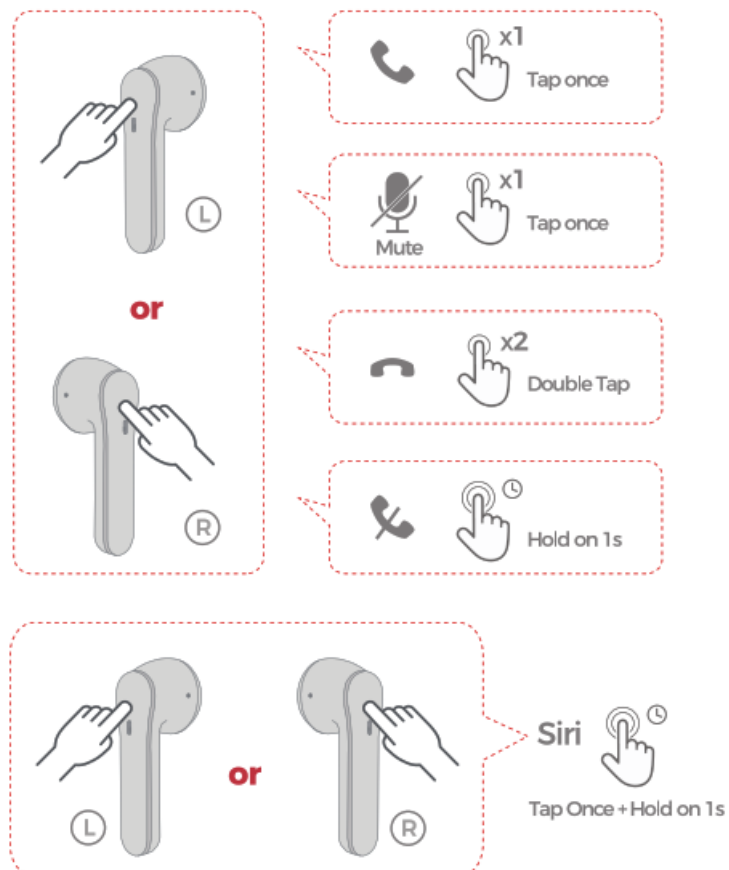
Open the charging case. they will automatically enter the pairing mode in which the LED light flashes blue and red alternately and then select "Mpow MX3".

Note The earbud will reconnect to the paired device by priority. If you want to pair to the second smartphone. please disconnect Bluetooth on the paired smartphone.

MUSIC



INCOMING CALL



MUSIC & INCOMING CALL & Siri

Volume Up / Down

Volume+: Press and hold the MFB button of Right earbud to turn up the volume increasingly.

Volume-: Press and hold the MFB button of Left earbud to turn down the volume decreasingly.

Next / Previous Track

Next Track Triple-tap the MFB of Right earbud.

Previous Track Triple-tap the MFB of Left earbud.

Play / Pause

Double-tap the MFB of either earbud.

Answer

Tap the MFB of either earbud once.

Mute

When you are having a phone call, you can tap either earbud once to mute or unmute the earbud's microphone.

Hang up

Double-tap the MFB of either earbud.

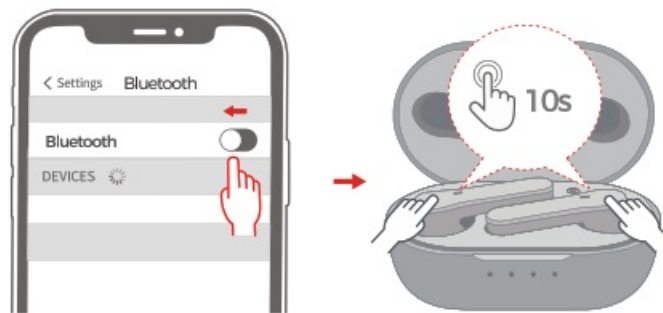
Reject

Press and hold the MFB of either earbud for 1 second.

Activate Siri

When in standby and music mode, firstly tap the MS of either earbud once, and then instantly press and hold the earbud for 1 second.

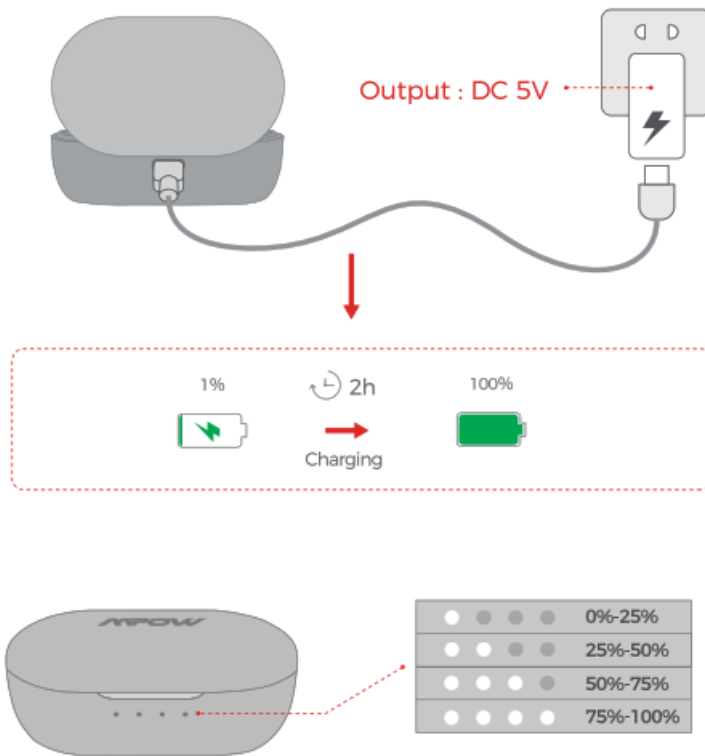
RESET



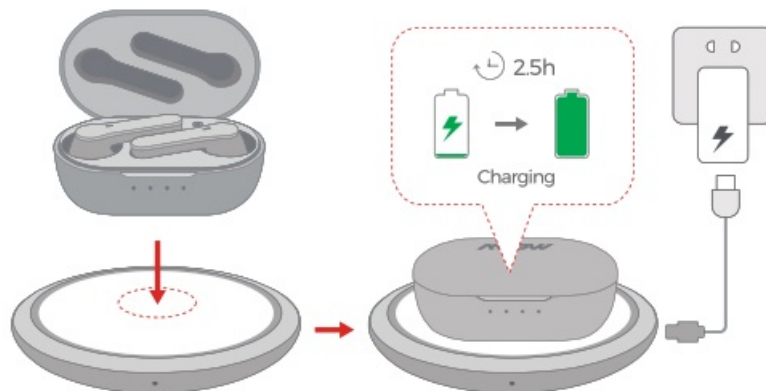
1. Make sure Bluetooth is turned off in your device
2. When both earbuds are in the charging case, simultaneously press and hold both earbuds for 10 seconds to clear paired devices.
3. The earbud's light will flash red and blue simultaneously, which means successful resetting.

CHARGING

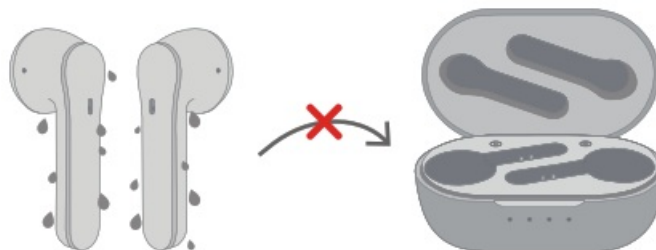
Model1: Wired Charging



Mode2: Wireless Charging



Note: wireless charger is sold separately.




Do not put the earbuds in the charging case when the earbuds are wet

CORRECT DISPOSAL OF THIS PRODUCT



(Waste Electrical& Electronic Equipment) This Marking shown on the product or its literature indicates that it should not be disposed of with other household wastes at the end of its working life.

 To prevent possible harm to the environment or human health from uncontrolled waste disposal. please separate this from other types of wastes and recycle it responsibly to promote the sustainable reuse of material resources. Household users should contact either the retailer where they purchased this product or their local government office. for details of where and how they can take this item for environmentally safe recycling.

Business users should contact their supplier and check the terms and conditions of the purchase contract This product should not be mixed with other commercial wastes for disposal.

FCC STATEMENT

Any changes or modifications not expressly approved by the party responsible for compliance could void the user's authority to operate the equipment

This device complies with part 15 of the FCC Rules. Operation is subject to the following two conditions:


(1) This device may not cause harmful interference. and

(2) this device must accept any interference received, including interference that may cause undesired operation.

FCC Radiation Exposure Statement:

This equipment complies with FCC radiation exposure limits set forth for an uncontrolled environment

Documents / Resources

	MPOW Mpow MX3 [pdf] User Manual Mpow MX3, BH480B
--	---