



Mpow Multi-Angle Dashboard Car Mount MPCA139AB User Manual

[Home](#) » [MPow](#) » Mpow Multi-Angle Dashboard Car Mount MPCA139AB User Manual 

USER MANUAL

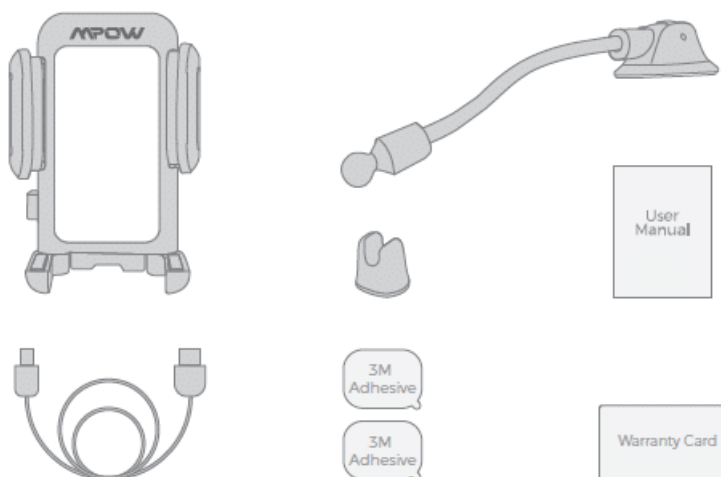


Mpow Multi-Angle Dashboard Car Mount
Model: MPCA139AB

Contents

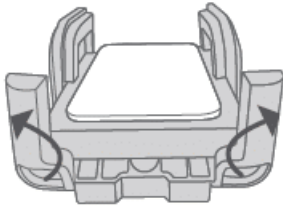
- 1 Package
- 2 Operation
- 3 Installation and Removal
- 4 Notification
 - 4.1 Related Posts

Package

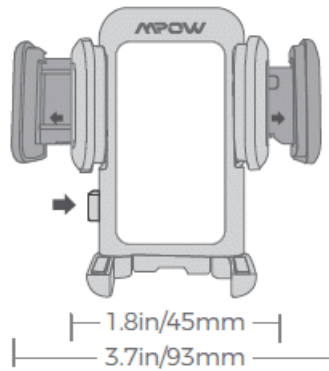


Operation

① Unfold the Support Feet

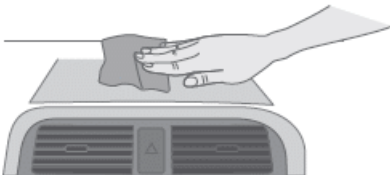


② One-touch Release

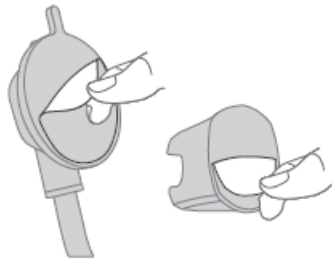


Installation and Removal

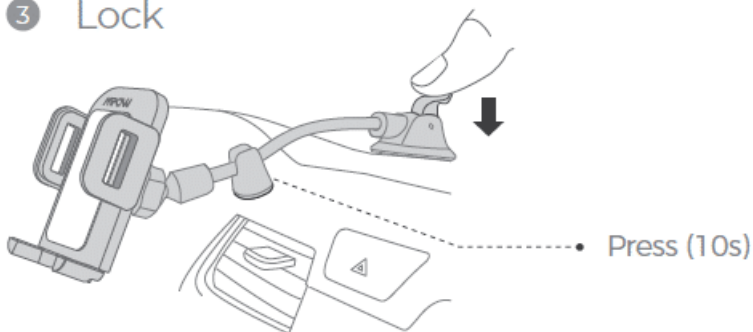
① Clean



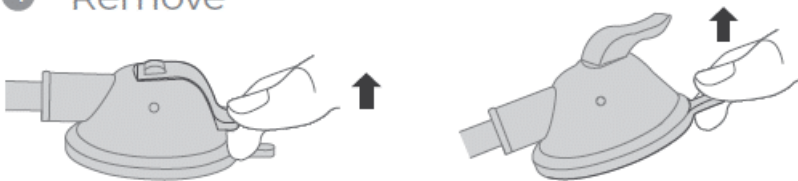
② Tear off



③ Lock



④ Remove



Notification

1. Not recommended to install the mount on rough, dirty and curved surfaces.
2. Do not expose it to direct sunlight for long time, as high temperature will weaken the suction cup.
3. To renew the stickiness of the suction cup, just rinse it with water and let it air dry.
4. The preferable installation area for the stabilizer should be close to the phone holder for maximum stability.

Optimized PDF

[Mpow-Multi-Angle-Dashboard-Car-Mount-MPCA139AB-Manual-Original](#)

Download

Questions about your Manual? Post in the comments!

[Manuals+](#).