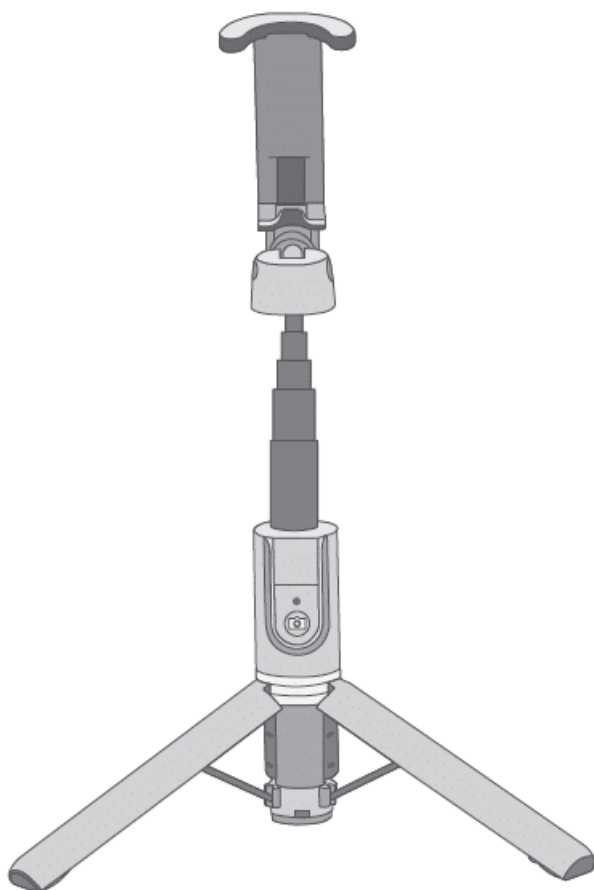


Mpow isnap x2 Selfie Stick Tripod PA197A User Manual

[Home](#) » [MPow](#) » Mpow isnap x2 Selfie Stick Tripod PA197A User Manual

USER MANUAL

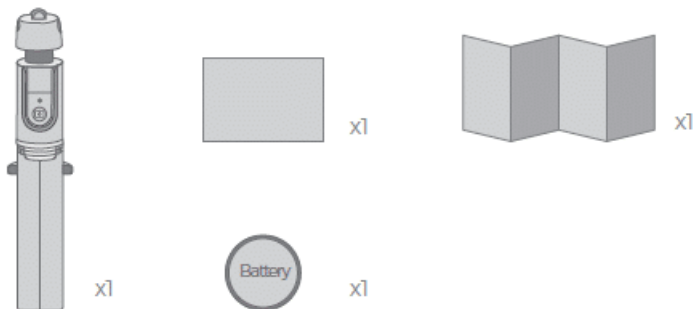


**Selfie Stick Tripod
Mpow isnap x2**

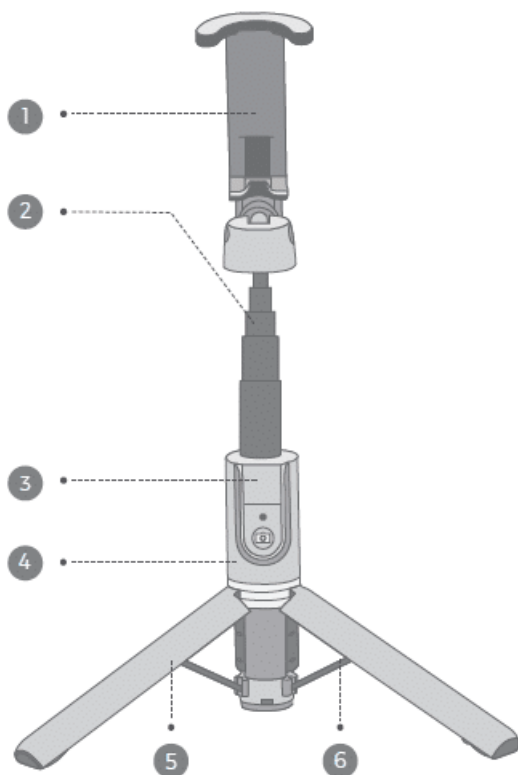
Contents [[hide](#)]

- 1 Package
- 2 Diagram
- 3 Pairing
- 4 Operation
- 5 Battery Replacement
- 6 Tips:
- 7 Related Posts

Package



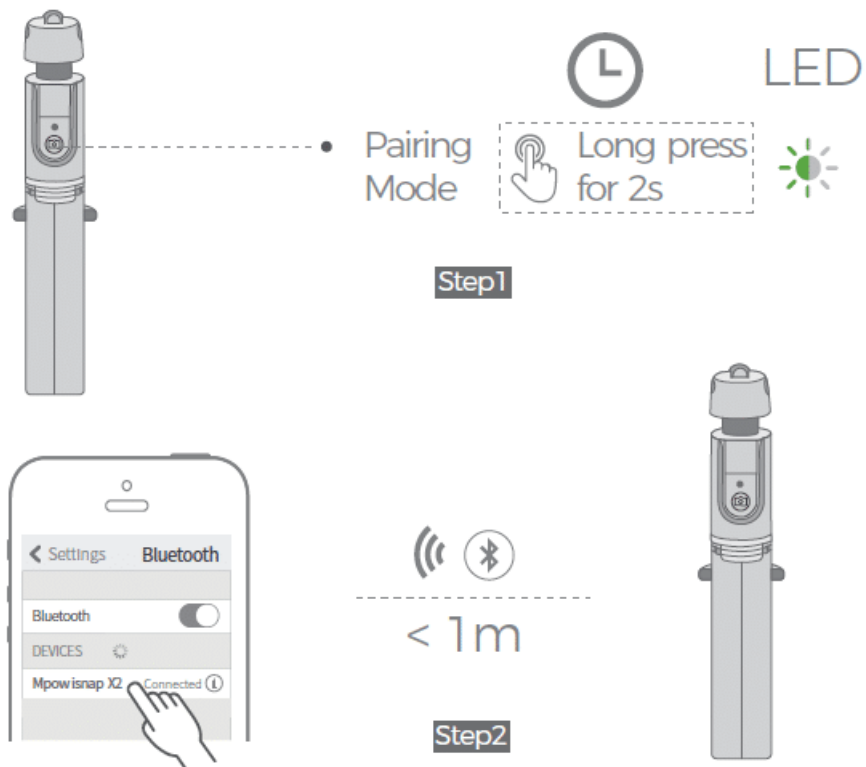
Diagram



- 1. Phone Holder
- 2. Aluminum Alloy Rod
- 3. Remote Control
- 4. Handle

5. Tripod
6. Support Frame

Pairing

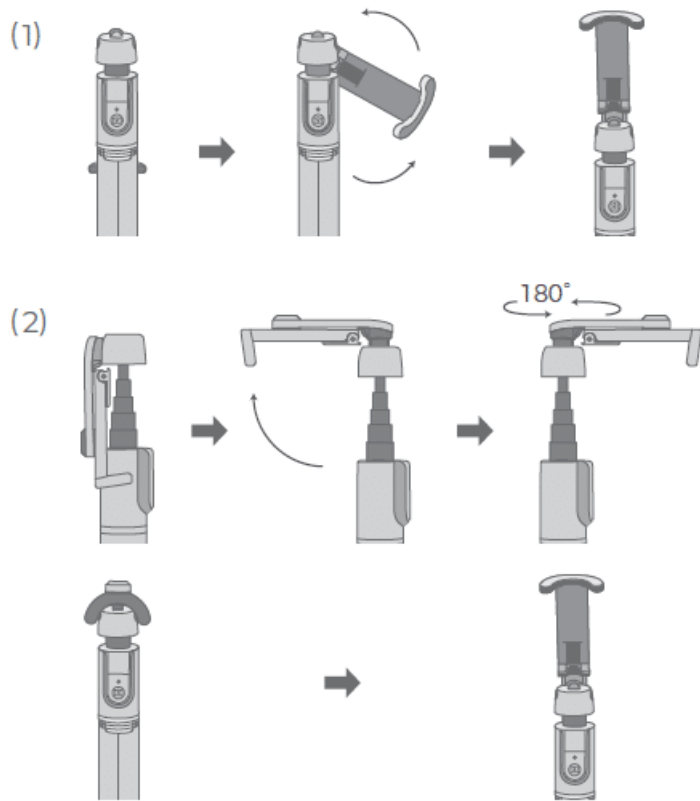


Long press the camera key for 2s until the green light flashes. Turn on the wireless function on your phone and select "Mpow isnap X2", the green light off if paired successfully.

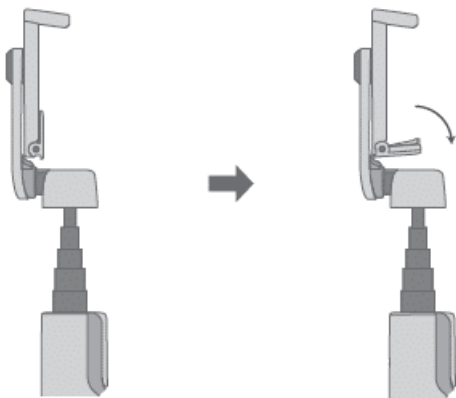
Tips: Long press the camera key for another 2s to turn it off.

Operation

1 Use the Phone Holder

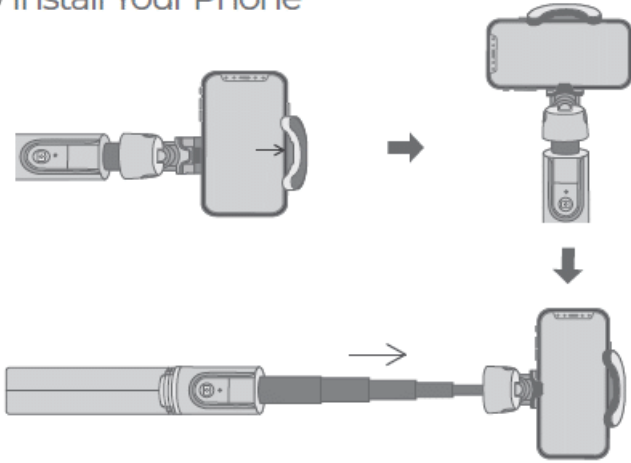


Rotate the phone holder 180° to the front of the selfie stick



Unfold the folded side of the phone holder

2 Install Your Phone

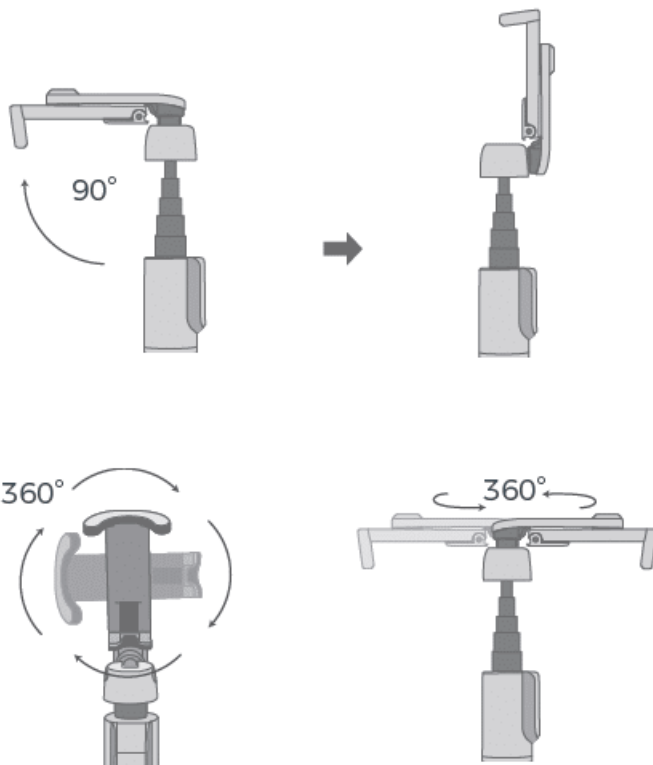


(1) Tightly push the clip to the right to mount your phone and make sure it is securely clamped.

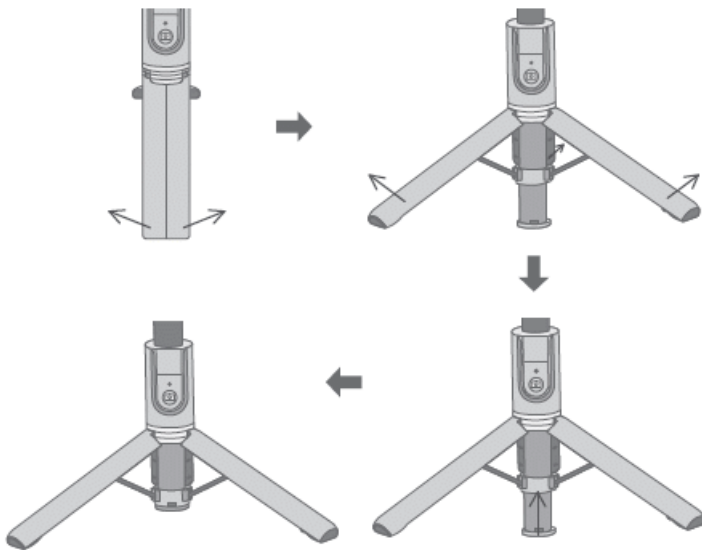
Tips: Please avoid blocking the side button of your phone.

(2) Extend the Rod.

3 Adjust the Angle



4 Unfold and Fix the Tripod



Unfold the tripod and push the center column upward until the tripod is fully expanded and stable. Place it on the flat surface to take photos.

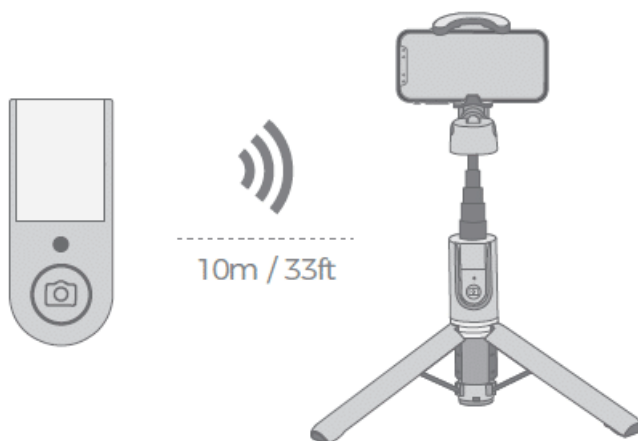
5 Remove the Remote Control



Push the remote control up to take it out

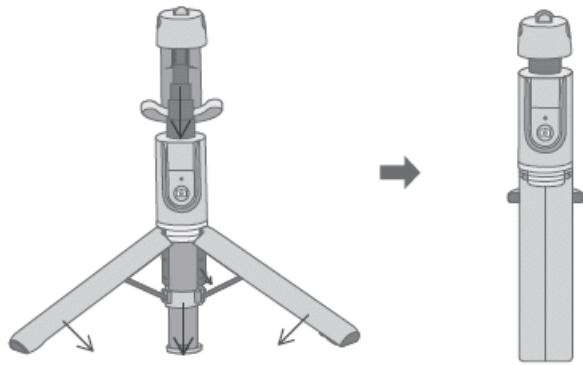
Tips: Remove the insulating strip before use

6 Take Pictures with the Remote Control

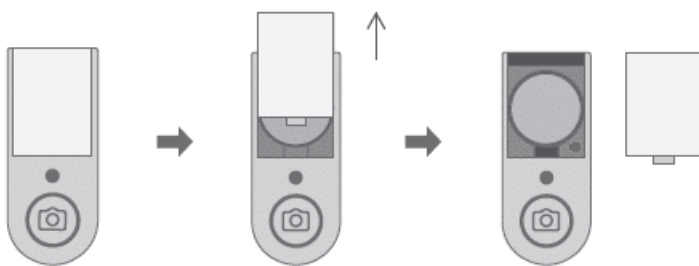


Tips: Please make sure you've set your phone's volume button as the shutter.

7 Fold the Selfie Stick Tripod



Battery Replacement



When the power is low due to long-term use, tightly push the battery cover of the upper part of the remote control upward to replace the new button battery

Tips:

1. The remote control will automatically sleep and the light turns off after 2mins if without any operation, just click the camera key to wake it up.
2. The remote control will automatically off after 30mins if without any operation, and you need to press the camera key for 2 seconds to turn it on.

[Mpow-isnap-x2-Selfie-Stick-Tripod-PA197A-Manual-Optimized](#)

Optimized PDF

[Mpow-isnap-x2-Selfie-Stick-Tripod-PA197A-Manual-Original](#)

Download

Questions about your Manual? Post in the comments!