



MPOW BH359B HC5 Plus Bluetooth Headset User Manual

[Home](#) » [MPow](#) » MPOW BH359B HC5 Plus Bluetooth Headset User Manual

MPOW BH359B HC5 Plus Bluetooth Headset User Manual



Contents [[hide](#)

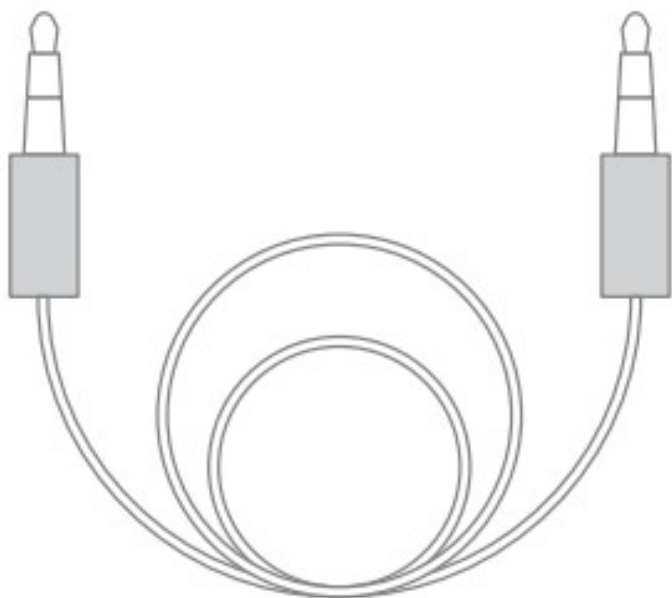
- [1 Package](#)
- [2 Diagram](#)
- [3 Specifications](#)
- [4 Function Button](#)
- [5 Charging](#)
- [6 How to Connect](#)
- [7 How to Pair](#)
- [8 Call/Music Setting on PC](#)
- [9 Question Answer](#)
- [10 Warranty Information](#)
- [11 Documents / Resources](#)
- [12 Related Posts](#)

Package

1. Headset x 1



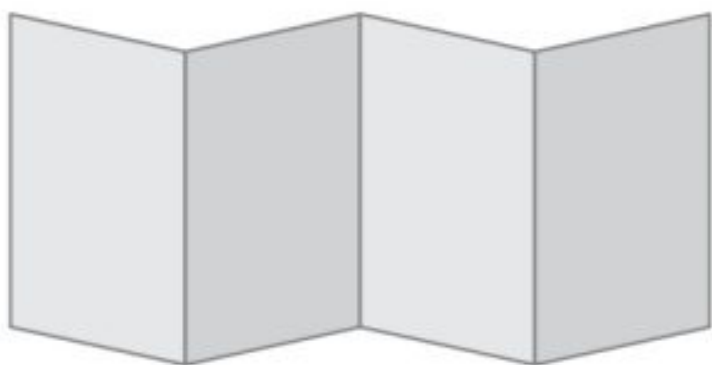
2. 3.5 mm Audio Cable x 1



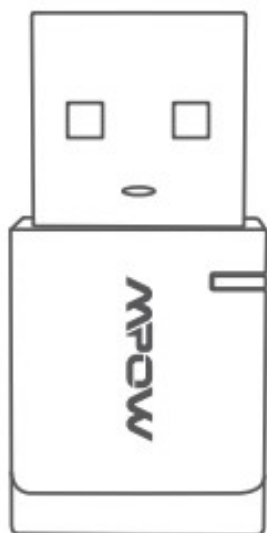
3. Micro USB Cable x 1



4. User Manual x 1

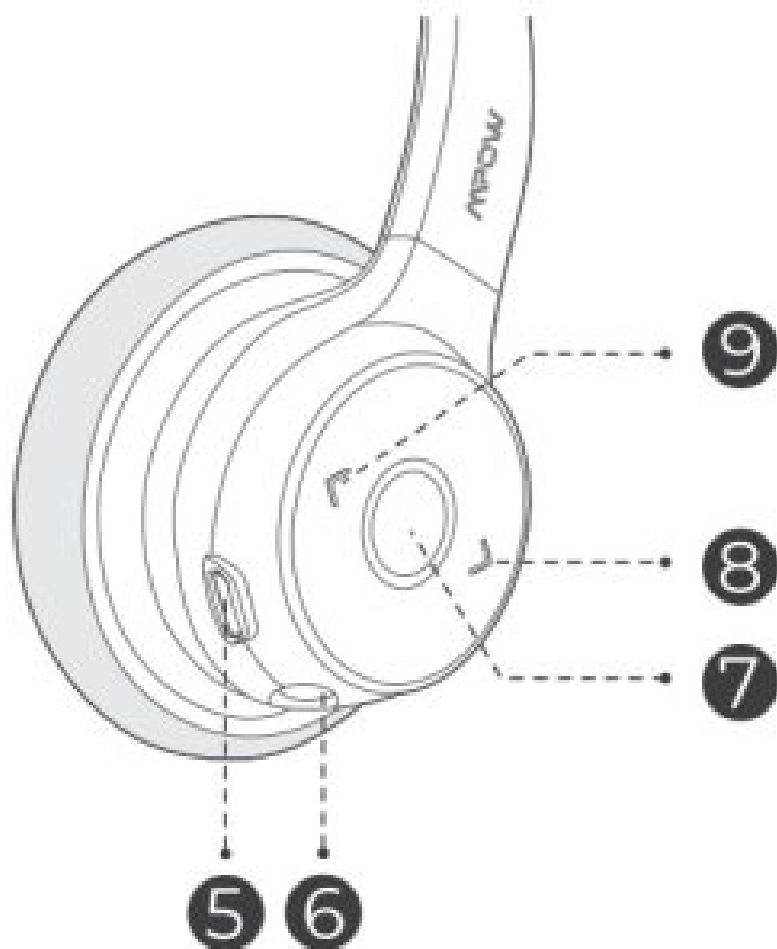


5. Adapter x 1



Diagram



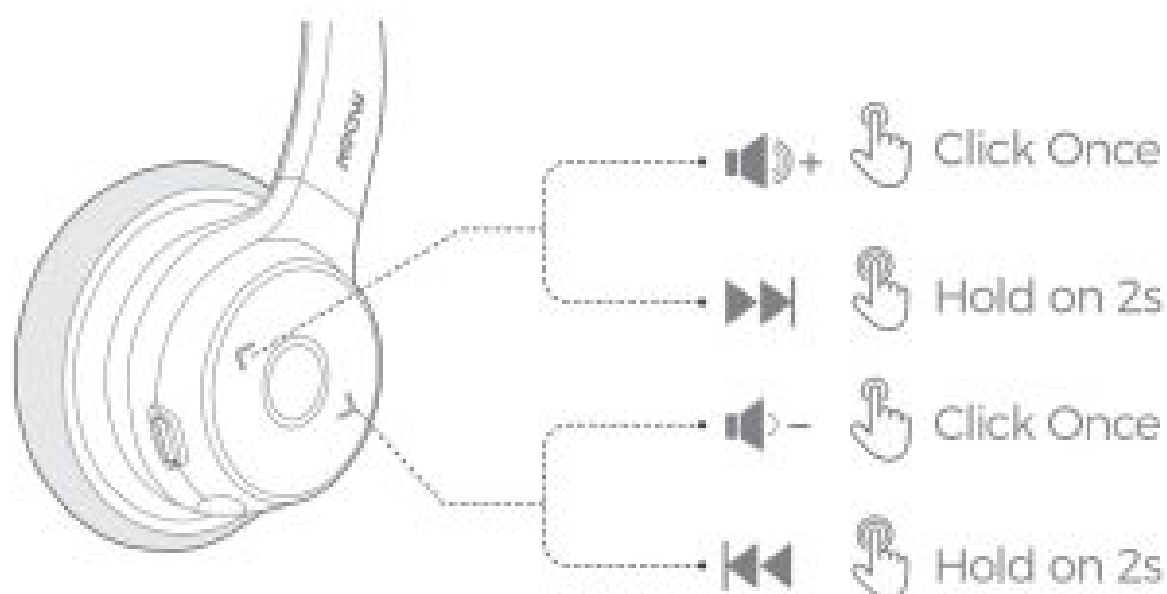
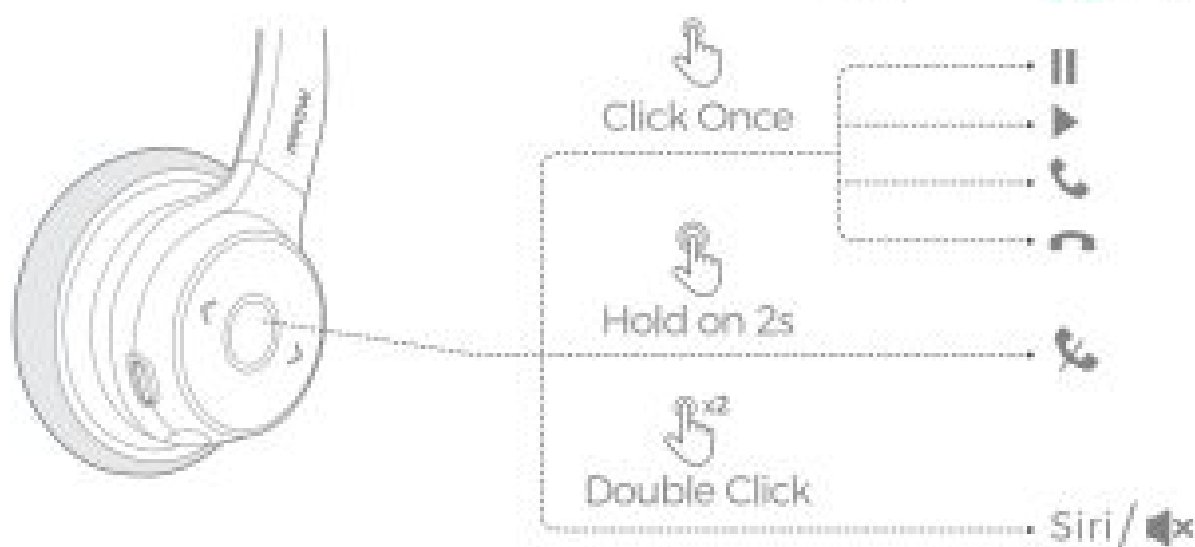
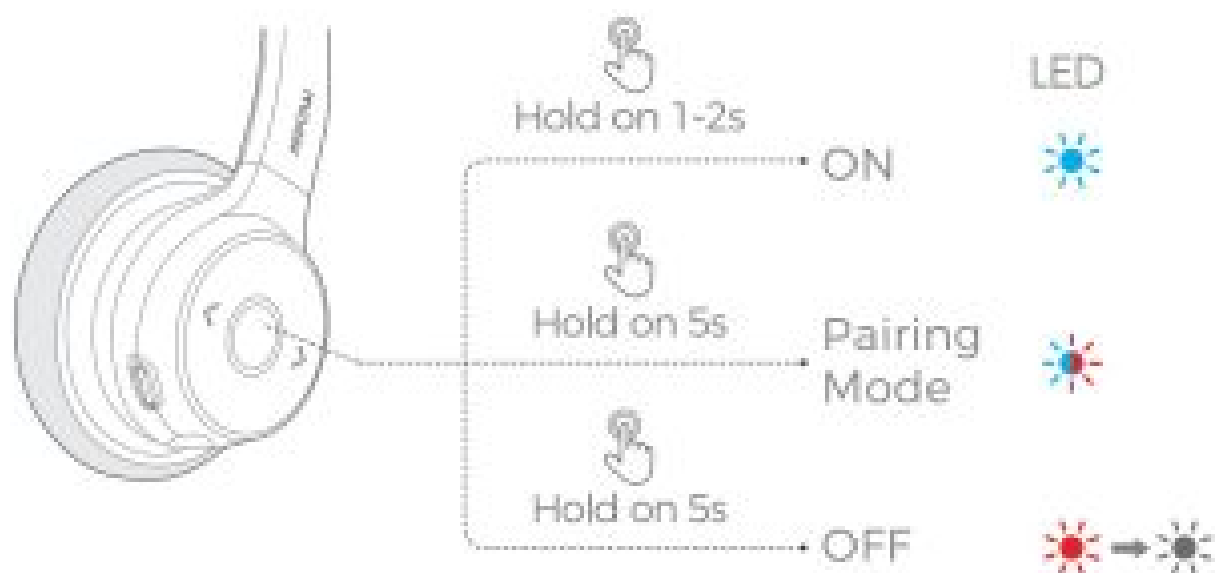


1. **Adjustable Headband**
2. **MIC**
3. **MIC**
4. **Comfortable Earpad**
5. **Micro USB Charging Interface**
6. **3.5mm Audio Port**
7. **MFB**
8. **Previous Track /Volume-**
9. **Next Track /Volume**

Specifications

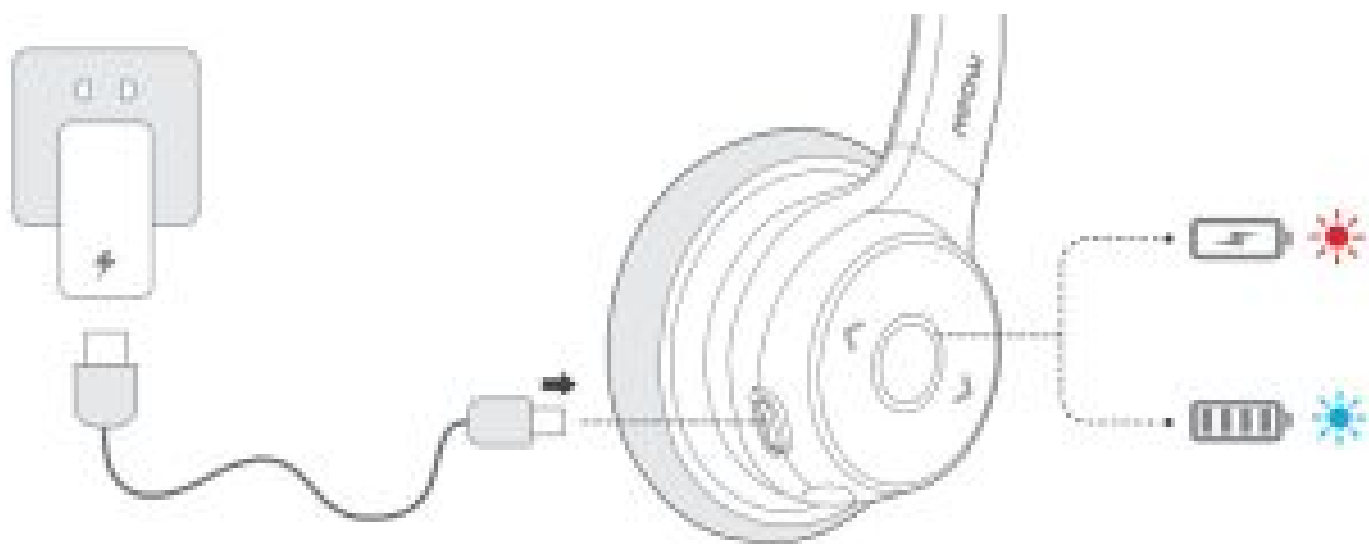
- **Standby Time:** 200H+
- **Charging Time:** 15-2H
- **Charging Input:** 5V —180mA
- **MIC Sensitivity:** -38±3dB
- **Talking Time:** 22H
- **Battery Capacity:** 230mAh
- **Bluetooth Version:** V5.0

Function Button

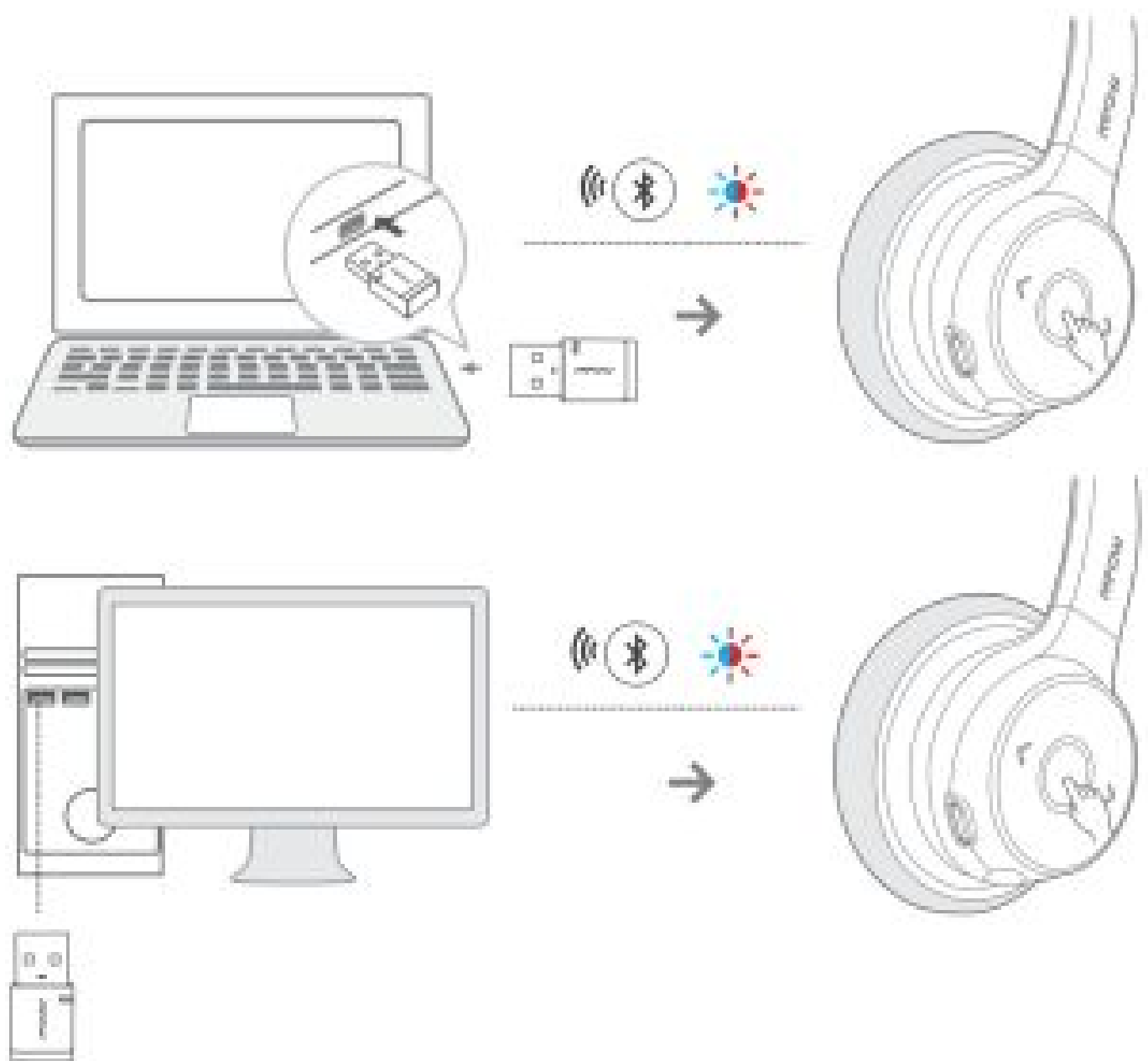


Charging

Output: DC 5V



How to Connect



How to Pair



Call/Music Setting on PC

1. If you want to make calls on Windows system with this headset, please follow the steps below and make sure you've connected to the headset successfully.
Plug the adapter into the computer, the red and blue lights flash alternately; the computer device name is displayed as Mpow HC5 Adapter. Turn on the headset to pairing mode, the headset is automatically connected to the computer through the adapter
Enter the Control Panel — Sound —Set Bluetooth Hands-free Audio as the default audio device Set Bluetooth Audio Input Device as the default microphone device
2. If you want to listen to music on Windows system with this headset, please follow the steps below and make sure you've connected to the headset successfully. Plug the adapter into the computer, the red and blue lights flash alternately; the computer device name is displayed as Mpow HC5 Adapter. Turn on the headset to pairing mode, the headset is automatically connected to the computer through the adapter. Enter the Control Panel — Sound —Set Bluetooth Audio Renderer as the default audio device Set Bluetooth Audio Input Device as the default microphone device

Question Answer

1. How to Pair if Failed?

In standby mode, hold the MFB and Volume+ button simultaneously for 4s to clear the pairing record. Then hold on the MFB until blue and red indicator light flashes alternatively to pair again.

2. Any Password Needed when Paring?

If needed. please try 0000 or 8888. 1111. 1234.

3. How Can I Charge My Headset?

You can charge it via the USB cable.

4. How to Restart the Headset if Failed?

Try to charge it via USB cable and then restart it


Warranty Information

Warranty & Support: Mpow offers a 45-day money back & 24-month worry-free guarantee. After-service Email: support@xmpow.com Mpow Customer Service **Phone:1-844-869-3583**

FCC Statement

Any Changes or modifications not expressly approved by the party responsible for compliance could void the users authority to operate the equipment This device complies with part 15 of the FCC Rules. Operation is subject to the following two conditions: (1 }Ibis device may not cause harmful interference, and (2) this device must accept any interference received, including interference that may cause undesired operation. FCC Radiation Exposure Statement: This equipment complies with FCC radiation exposure limits set forth for an uncontrolled environment

Documents / Resources

	MPOW BH359B HC5 Plus Bluetooth Headset [pdf] User Manual BH359B, HC5 Plus Bluetooth Headset, Bluetooth Headset, Headset, BH359B HC5 Plus Blueto oth Headset
---	---