

Contents [[hide](#)]

[1 MOZA R Series Multi-Function Stalks](#)

[2 Installation](#)

[3 Packing details](#)

[4 FAQs](#)

[5 Documents / Resources](#)

[5.1 References](#)



MOZA R Series Multi-Function Stalks



Specifications

- Product Name: Multi-function Stalks
- Compatibility: R3, R5, R9, R12, R16, R21 bases
- Warranty: 2 years

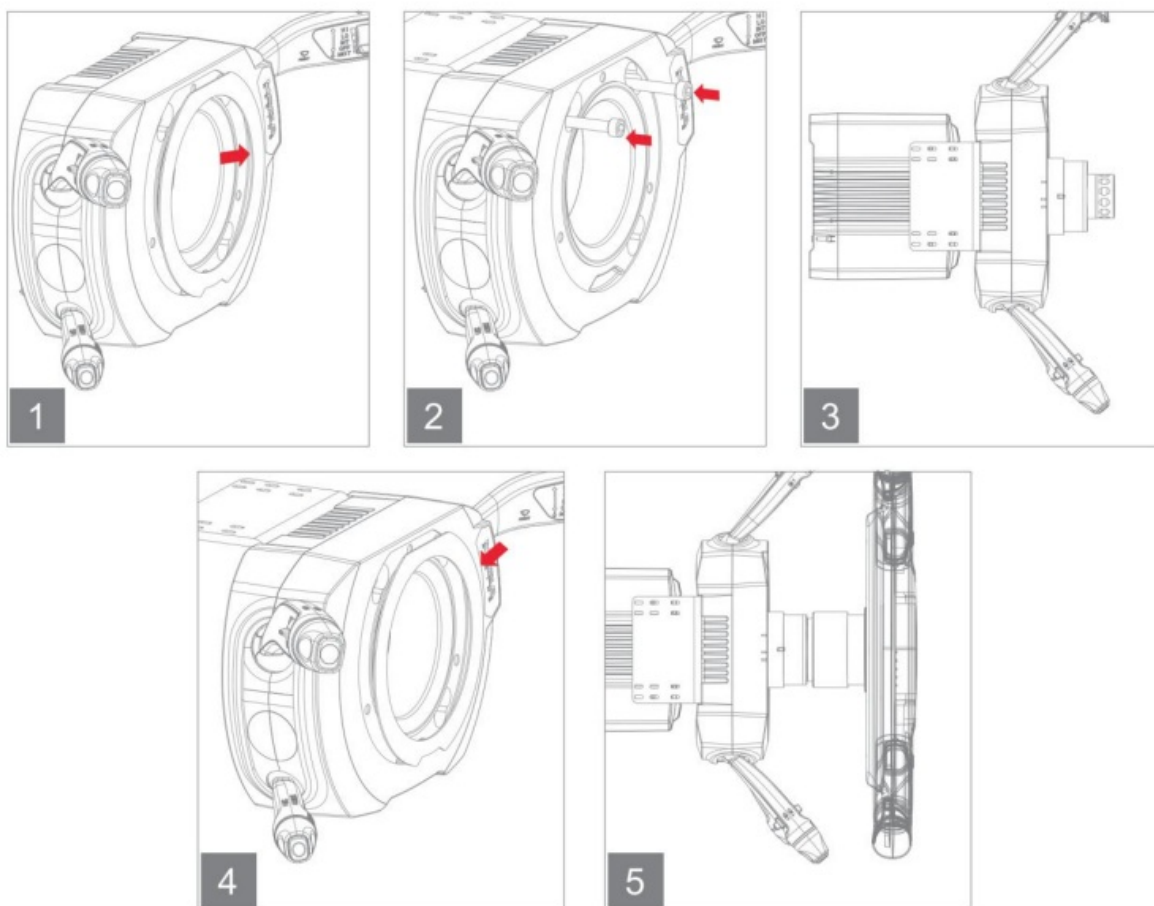
Dear customer,

Thank you for purchasing our product. Please read the following instructions carefully before first use and keep this user manual for future reference. Pay particular attention to the safety instructions. If you have any questions or comments about the device, please visit our customer support page: www.alza.cz/EN/kontakt.

Installation

Installation Method 1:

This method is suitable for R3, R5, R9, and R12 bases.

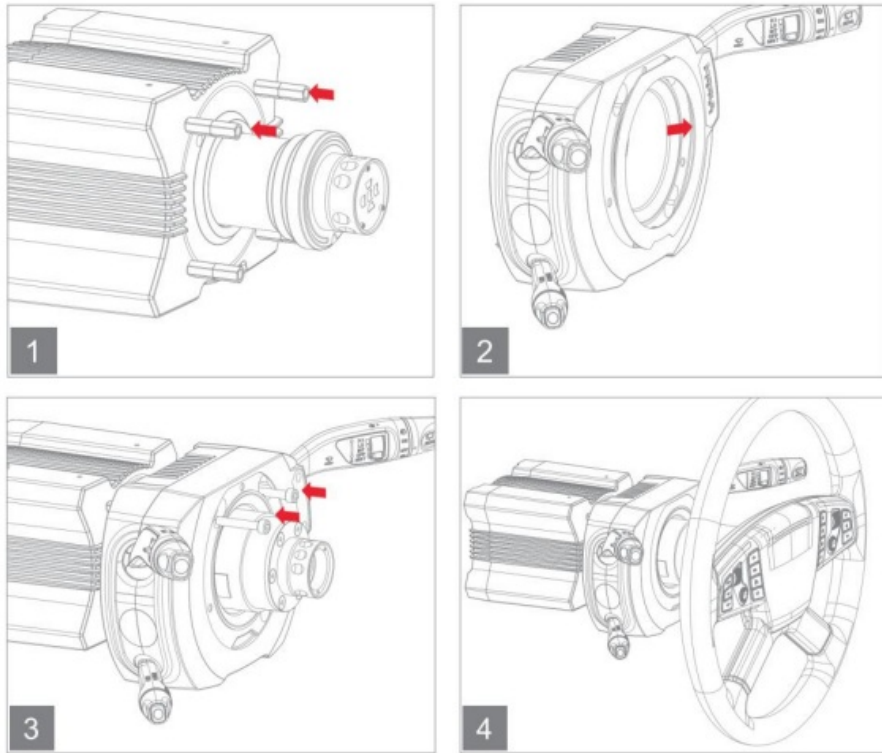


1. Open the magnetic decorative plate using the latch.
2. Loosely attach the stalks to the mounting plate using the provided screws. Use M8 screws for the R3 base, and M6 screws for all other MOZA bases.
3. Insert the extension rod into the base.
4. Align the assembly with the base and secure it using M3 screws, making sure both

screws are aligned.

5. Check the alignment between the stalks and the extension rod. If slightly off, adjust and tighten the screws. If aligned, snap the magnetic cover back into place.
6. Attach the steering wheel and you're ready to race.

Installation Method 2:



This method is recommended for bases with four front-facing fixed holes, such as later versions of R9, R12, R16, and R21. It provides better centering.

Note: The older versions of the R16 and R21 bases without front mount holes require an additional adapter bracket.

1. Stack two M6/M8 stand off studs from the accessories kit and use the 8-10 external hex wrench provided to secure 4 of them to the base (fig.1). Tighten thoroughly to ensure the four studs are well-aligned.
2. Connect the extension rod assembly onto the base (fig.2).
3. Open the magnetic decorative plate using the latch (fig.3). Secure the stalks to the studs with the M6/M8 screws from the accessories kit (fig.4).
4. Cover with the magnetic decorative plate and attach the steering wheel (fig.5).

Note: The extension rod comes with a self-centring block that automatically cancels the turn signal when the steering wheel returns to the centre. If this feature is not needed, you can remove the block. A spare self-centering block is included in the accessory package.

Packing details

- Multi-Function Stalks
- Extension Rod Assembly
- Type-C Data Cable
- Self-Centering Block
- Mounting Plate
- Hex Wrench
- External Hex Wrench
- M4/M3 Screws
- Screws and Studs (M8/M6)
- 3M Double-sided Tape

Warranty Conditions

A new product purchased in the Alza.cz sales network is guaranteed for 2 years. If you need repair or other services during the warranty period, contact the product seller directly, you must provide the original proof of purchase with the date of purchase.

The following are considered to be a conflict with the warranty conditions, for which the claimed claim may not be recognized:

- Using the product for any purpose other than that for which the product is intended or failing to follow the instructions for maintenance, operation, and service of the product.
- Damage to the product by a natural disaster, the intervention of an unauthorized person or mechanically through the fault of the buyer (e.g., during transport, cleaning by inappropriate means, etc.).
- Natural wear and aging of consumables or components during use (such as batteries, etc.).
- Exposure to adverse external influences, such as sunlight and other radiation or electromagnetic fields, fluid intrusion, object intrusion, mains overvoltage, electrostatic discharge voltage (including lightning), faulty supply or input voltage and inappropriate

polarity of this voltage, chemical processes such as used power supplies, etc.

- If anyone has made modifications, modifications, alterations to the design or adaptation to change or extend the functions of the product compared to the purchased design or use of non-original components.

EU Declaration of Conformity

This equipment is in compliance with the essential requirements and other relevant provisions of EU directives.

WEEE

This product must not be disposed of as normal household waste in accordance with the EU Directive on Waste Electrical and Electronic Equipment (WEEE – 2012/19/EU).

Instead, it shall be returned to the place of purchase or handed over to a public collection point for the recyclable waste. By ensuring this product is disposed of correctly, you will help prevent potential negative consequences for the environment and human health, which could otherwise be caused by inappropriate waste handling of this product. Contact your local authority or the nearest collection point for further details. Improper disposal of this type of waste may result in fines in accordance with national regulations.



FAQS

Q: What should I do if my product needs repair during the warranty period?

A: Contact the product seller directly and provide the original proof of purchase with the date of purchase.

Documents / Resources



[MOZA R Series Multi Function Stalks \[pdf\]](#) User Manual

R3, R5, R9, R12, R16, R21, R Series Multi Function Stalks, R Series, Multi Function Stalks, Function Stalks, Stalks

References

- [User Manual](#)

Moza

Function Stalks, Moza, Multi Function Stalks, R Series Multi Function Stalks, R-SERIES, R12, R16, R21, R3, R5, R9, Stalks

Leave a comment

Your email address will not be published. Required fields are marked *

Comment *

Name

Email

Website

☐ Save my name, email, and website in this browser for the next time I comment.

[Post Comment](#)

Search:

[Search](#)

[Manuals+](#) | [Upload](#) | [Deep Search](#) | [Privacy Policy](#) | [@manuals.plus](#) | [YouTube](#)

This website is an independent publication and is neither affiliated with nor endorsed by any of the trademark owners. The "Bluetooth®" word mark and logos are registered trademarks owned by Bluetooth SIG, Inc. The "Wi-Fi®" word mark and logos are registered trademarks owned by the Wi-Fi Alliance. Any use of these marks on this website does not imply any affiliation with or endorsement.