



MOZA FLIGHT MH16 High Performance Simulators User Manual

[Home](#) » [MOZA FLIGHT](#) » MOZA FLIGHT MH16 High Performance Simulators User Manual 

MOZA FLIGHT MH16 High Performance Simulators



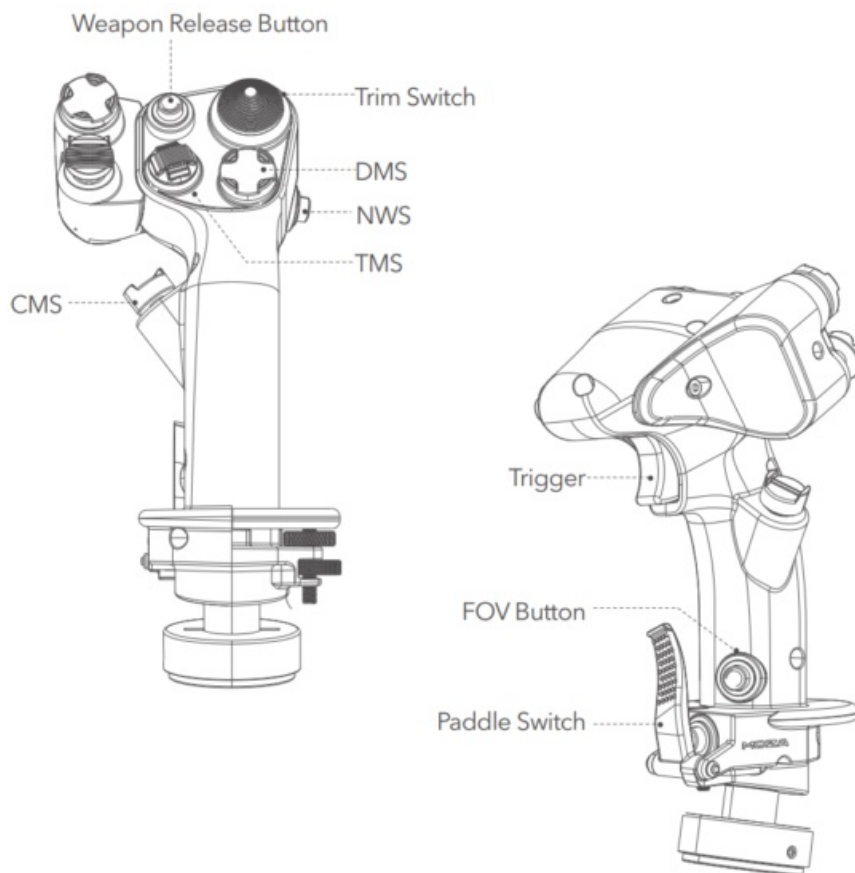
Contents

- [1 Product Introduction](#)
- [2 Buttons](#)
- [3 User Guide](#)
- [4 Software Guide](#)
- [5 Specs](#)
- [6 Precautions](#)
- [7 Documents / Resources](#)
- [7.1 References](#)

Product Introduction

- Aluminum Alloy Construction
- Classic Design
- Detachable Modular Components
- 30 Input Signals
- ALPS Switches
- Open Ecosystem

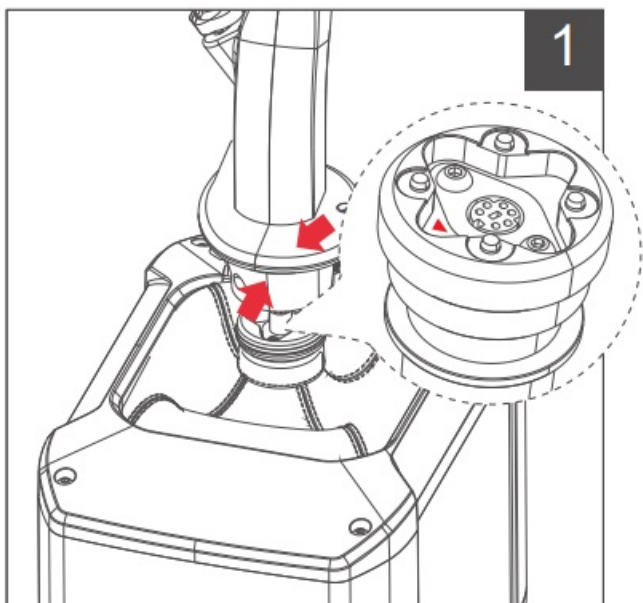
Buttons



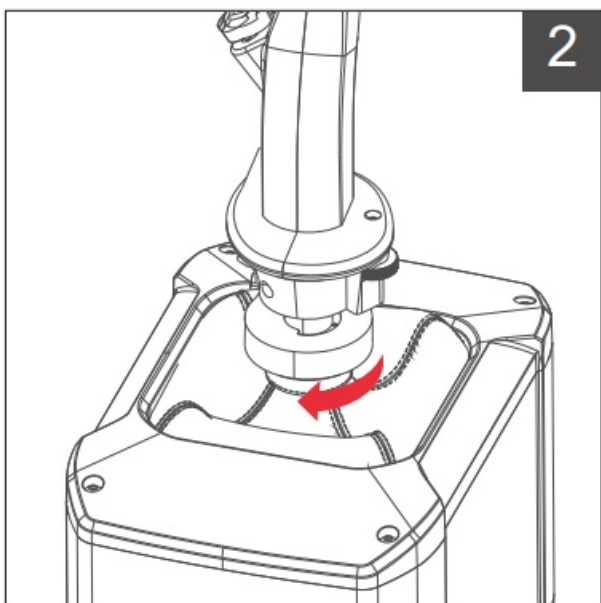
User Guide

Connecting the Base

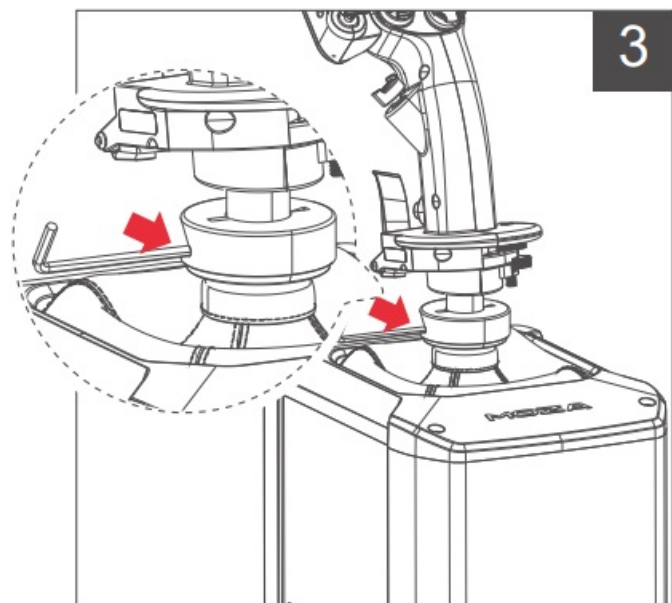
1. Pull out the connection cable from the flight stick. Connect the flight stick to the aviation base connector in the direction indicated by the forward facing arrow.



2. Tighten the nut ring on the flight stick by turning it clockwise.

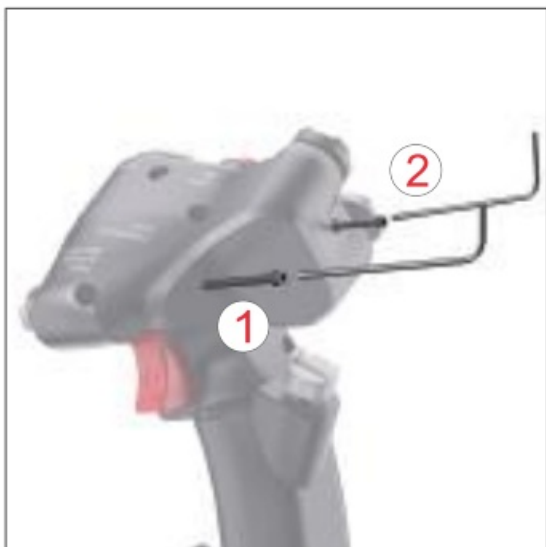


3. Use the provided wrench to secure the connection.



Installing and Removing the Side Modules

1. To remove the side-mounted component, use the included wrench 1 to unscrew the M3 screw at position 1, then use wrench 2 to unscrew the M2 screw at position 2.



2. To install the side module, align the pogo pins on the module with the corresponding slots and tighten the screws using the wrench. After powering on the flight stick, check if the light in the lower-left corner of the side module is on to ensure a proper power connection.



Adjusting the Hand Rest

1. Remove the protective cover from the hand rest screws.



2. Turn the lower screw counterclockwise to adjust the hand rest height to your preference.

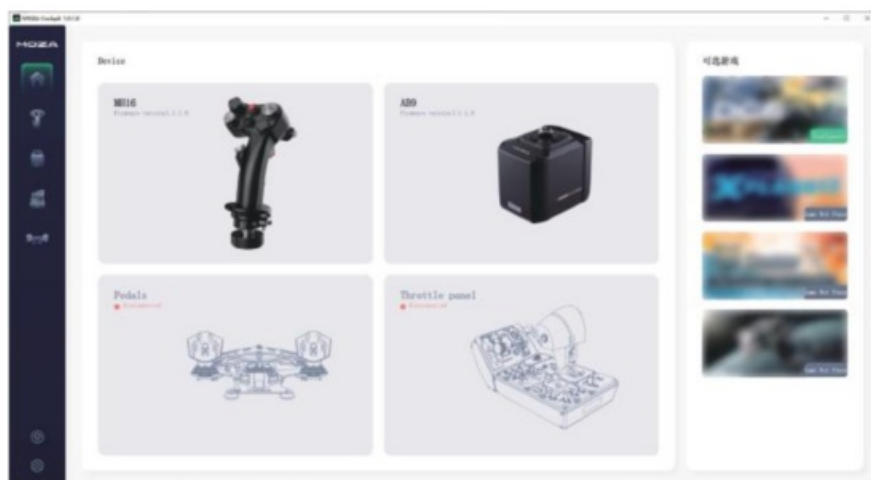


3. Turn the upper nut clockwise to secure the hand rest in place, then reattach the protective cover.

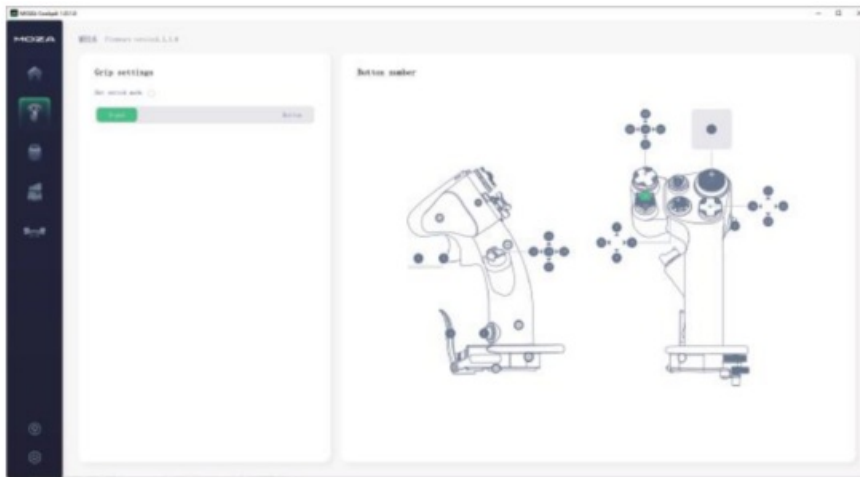


Software Guide

Check the status of all connected devices (base, flight stick, throttle, rudder pedals, etc.) and launch games direct from the MOZA software.



The flight stick features two modes: D-pad mode, providing 30 signals, and hat switch mode, offering 26 signals. The hat switch can be mapped as a joystick (axis) or assigned to any button signals.



Specs

- **Platform:** PC
- **Main Body Material:** Aluminum alloy
- **Rated Voltage:** 3.3V
- **Rated Current:** 5A
- **Connector:** 5-pin aviation connector
- **Z-axis Module:** Optional
- **Size:** 99×213.5×132mm

Precautions

- Do not unscrew the nuts by hand to avoid injury.
- Do not expose the device to liquids or humidity as it may cause fire or electric shock.
- Avoid using the device in direct sunlight.
- Do not use MOZA flight sim gear with the MOZA racing gear.
- Recommended indoor temperature: 5°C ~ 35°C.
- For your safety and well-being, please monitor your gaming time and take breaks as needed.
- The device is not suitable for children under the age of 6, small accessories may pose a choking hazard!
- Children under 13 should have adult supervision.
- It is strictly forbidden to disassemble the equipment by yourself, failure to adhere to this will result in loss of warranty.
- The equipment must be connected with the factory-supplied power supply to ensure the electrical safety and the protection of user rights and interests.
- In order to ensure user safety, parts repair or replacement can only be carried out by officially authorized repair centers.
- Non-standard power supplies are strictly prohibited even if data such as related voltages match.
- Use only AC power provided by a standard wall outlet to avoid damage to the product.
- Do not expose the device to heat sources.
- Unplug the power cord of the device if it will not be used for a long time.
- If you find any abnormality, please stop using it immediately and seek help from MOZA representatives or

authorized repair centers.


- Stay tuned to our official website and social media platforms for the latest product updates.



Quick Guide



Documents / Resources

	<p>MOZA FLIGHT MH16 High Performance Simulators [pdf] User Manual MH16 High Performance Simulators, MH16, High Performance Simulators, Performance Simulators, Simulators</p>
---	---

References

- [User Manual](#)

Manuals+. Privacy Policy

This website is an independent publication and is neither affiliated with nor endorsed by any of the trademark owners. The "Bluetooth®" word mark and logos are registered trademarks owned by Bluetooth SIG, Inc. The "Wi-Fi®" word mark and logos are registered trademarks owned by the Wi-Fi Alliance. Any use of these marks on this website does not imply any affiliation with or endorsement.