



# MOXA P16-1MP-M12 IP Camera Installation Guide

[Home](#) » [MOXA](#) » MOXA P16-1MP-M12 IP Camera Installation Guide 



VPort P16-1MP-M12 Series  
Quick Installation Guide  
Moxa IP Camera  
Version 2.1, January 2021

Technical Support Contact Information [www.moxa.com/support](http://www.moxa.com/support)

## Contents

- [1 Overview](#)
- [2 Package Checklist](#)
- [3 Features](#)
- [4 Product Description of the VPort P16-1MP-M12](#)
- [5 Hardware Installation](#)
- [6 Software Installation](#)
- [7 Wiring Requirements](#)
- [8 Dimensions \(unit = mm \(inch\)\)](#)
- [9 Specifications](#)
- [10 Documents / Resources](#)
- [11 Related Posts](#)

## Overview

The rugged VPort P16-1MP-M12 cameras provide an HD (720P, 1280 x 720) video image, and feature an H.264/MJPEG IP dome, giving them the versatility and ruggedness to excel in many different installations and environments for mobile IP video surveillance applications. In addition, the cameras are compliant with mandatory sections of EN 50155, covering operating temperature, power input voltage, surge, ESD, and vibration, as well as conformal coating and power insulation, making them suitable for a variety of industrial applications, and feature vandal-proofing (EN 62262 IK10), a -25 to 55°C or -40 to 70°C (T models) operating temperature, a rugged M12

Ethernet port, PoE power inputs, IP66 rain and dust protection, and day & night image capability.

## Package Checklist

Moxa's VPort P16-1MP-M12 is shipped with the following items. If any of these items is missing or damaged, please contact your customer service representative for assistance.

- 1 VPort P16-1MP-M12 (lens included)

Model	Lens	Temperature		Conformal coating
		-25 to 55°C	-40 to 70°C	
VPort P16-1MP-M12-CAM36	3.6 mm	√		
VPort P16-1MP-M12-CAM80	8.0 mm	√		
VPort P16-1MP-M12-CAM36-T	3.6 mm			
VPort P16-1MP-M12-CAM80-T	8.0 mm			
VPort P16-1MP-M12-CAM36-CT	3.6 mm	√		√
VPort P16-1MP-M12-CAM80-CT	8.0 mm	√		√
VPort P16-1MP-M12-CAM36-CT-T	3.6 mm		√	√
VPort P16-1MP-M12-CAM80-CT-T	8.0 mm		√	√

- Screw handle accessory package

Torx screw driver for attaching/detaching the upper case	4 sets of nut, gasket, and spring washer for mounting the camera	4 Nylock screws (10 mm) for mounting the top cover on the ceiling in a flush mount installation
		

4 Nylock screws (40 mm) for mounting the VPort P16 on the ceiling in a panel mount installation	Sticker for camera mounting positions
	

- Quick Installation Guide
- Warranty card

**NOTE** Check the model name on the VPort's side label to determine if the model name is correct for your order.  
**NOTE** This product must be installed in compliance with your local laws and regulations.

## Features

- 1/2.7" HD progressive CMOS image sensor
- High image quality with WDR (wide dynamic range) and DNR (Digital Noise Reduction) supported
- Minimum illumination is up to 0.2 lux (color)
- Supports MJPEG and H.264 Dual Codecs
- Supports ONVIF Profile S for multiple video stream profiles
- Video stream up to 30 frames/sec at WXGA (1280 x 800) resolution
- Supports video quality configuration with fixed bit rate (CBR) and fixed quality (VBR)
- Video latency under 200 ms
- DynaStream™ for network efficiency with dynamic frame rate change
- WXGA/720P/SVGA/ Full D1/ 4CIF/ VGA/ CIF resolution
- TCP, UDP, and HTTP network transmission modes
- Supports DHCP OPT66/67 for automatic configuration from TFTP server, making it easy to batch configure several units
- Supports RTSP streaming
- Support multicast (IGMP) video streaming
- Supports SNMP (V1/V2C/V3) for network system integration and management
- Supports QoS (ToS) for transmission priority
- Built-in web server for easy configuration
- Accessible IP filtering · UPnP supported
- Complies with all EN 50155 mandatory test items\*

**\*This product is suitable for rolling stock railway applications, as defined by the EN 50155 standard.**

**For a more detailed statement, click here: [www.moxa.com/doc/specs/EN\\_50155\\_Compliance.pdf](http://www.moxa.com/doc/specs/EN_50155_Compliance.pdf)**

- 1 10/100BaseT(X) port with M12 D-code connector
- IP66 rain and dust protection, with dehumidifying membrane
- PoE (Power-over-Ethernet, IEEE 802.3af) supported
- EN 62262 IK10 level vandal resistance
- -25 to 55°C (EN 50155, Class T1), or -40 to 70°C (EN 50155, Class TX) operating temperature for rolling stock environments
- CE, FCC, UL 60950-1
- Built-in tamper alarm and Video Motion Detection (VMD)
- Pre, Trigger, and post snapshot images supported
- Sequential snapshot images supported
- Supports SMTP and FTP for alarm message transmission
- Supports HTTP event server
- 5-year warranty

**NOTE** The VPort P16-1MP-M12 is designed for onboard environments, and should be used inside the car or train.

## Product Description of the VPort P16-1MP-M12

### Appearance



- **Mounting screw (panel mount):** 4 nylock M4 screws (40 mm) are included with the accessory to mount the VPort P16 on the wall or ceiling; the external length is about 20 mm after installation. The 4 mounting screws can work with the 4 sets of nut, gasket, and spring washer, or can be screwed directly into the screw holes.  
**NOTE** If the length of the mounting screws is insufficient for your installation environment, you may use longer M4 screws (not provided with the product), or contact your Moxa sales representative for customization service.
- **Top cover mounting screws:** 4 Nylock screws (10 mm) are included with the accessory for flush mounting the top cover on the ceiling.
- **Top cover:** The top cover can be removed for tuning the camera lens position.
- **Lens:** The VPort P16-1MP-M12 can be used with 2 different lenses with different focal lengths: 3.6 mm and 8 mm (Complete model names include “-CAMxxxxxx”. See page 2 for details).
- **Dome cover:** The VPort P16-1MP-M12 comes with a vandal-proof PC dome cover, which complies with EN

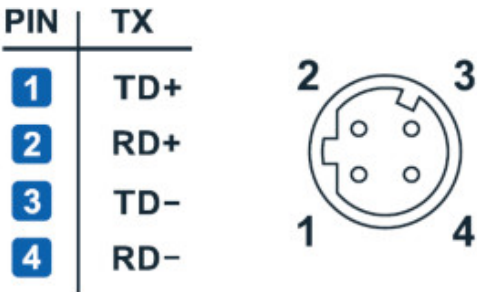
62262 (IEC 62262) class IK10.

**NOTE** The color of the dome cover can be customized based on your installation environment. Contact your Moxa sales representative for information about this customization service. However, keep in mind that the dome cover will decrease the amount of light that can be transmitted into the lens. The darker the dome cover, the greater the decrease of light transmittance.





**Bottom View**



- **PoE & Ethernet M12 connector:** A 4-pin M12 D-code connector for both PoE power supply (Mode A) and Auto MDI/MDI-X Ethernet connection.



**NOTE** To connect the VPort 16-M12 series to the network, use an Ethernet cable with a D-code M12 connector and an M12 PoE switch or RJ45 PoE switch.

M12 D-code to M12 D-code cable	M12 PoE Switch (e.g., TN-5508-4PoE)
	
M12 D-code and RJ45 cable	RJ45 PoE switch (e.g., EDS-P510)
	

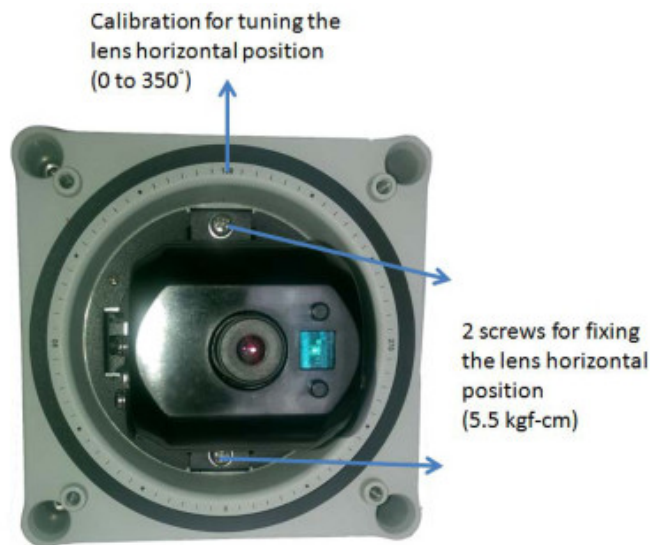
**NOTE** The power input rating of the VPort P16-1MP-M12 is 48V/0.35A, and the maximum power consumption is about 5 W.

**NOTE** The equipment is designed for installation inside a building, and is not intended to be exposed to the outdoors.

- Reset button: Loosen the screw and use a pointed stick, such as a toothpick, to push in the reset button to reboot to factory defaults.
  - Reboot: press the button once and then release.
  - Factory default: press and hold the button for at least 90 seconds.

**Top View without top cover and dome cover**

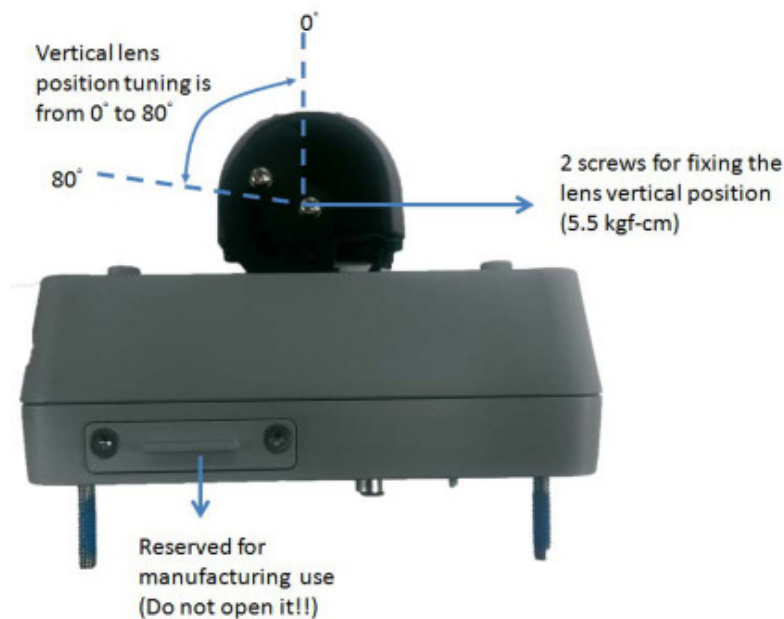
-



**Calibration for tuning the horizontal lens position (0 to 350°):** After tuning the horizontal lens position, mark the position with this calibration for future replacement or mass installations.

- **2 screws for fixing the horizontal lens position:** There are 2 screws for fixing the horizontal lens position. A 5.5 kgf-cm torque is required for onboard environments.

#### Side view without top cover and dome cover



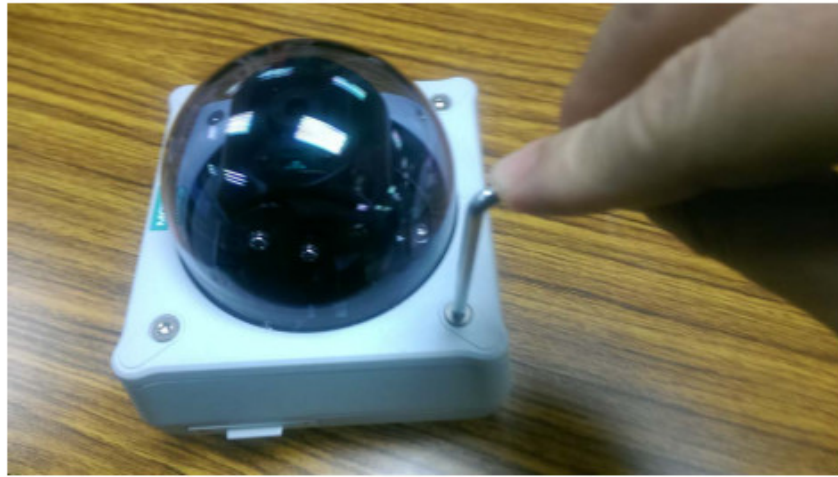
- **2 screws for fixing the vertical lens position:** There are 2 screws for fixing the vertical lens position. The vertical lens position can be tuned from 0° to 80°. A 5.5 kgf-cm torque is required for onboard environments. –

6 –

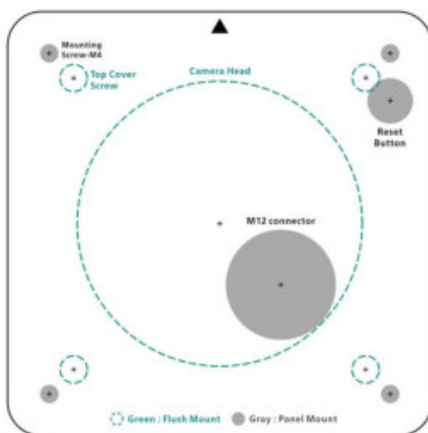
#### Hardware Installation

**Step 1: Open and remove the upper case.** Use the security Torx to loosen the screws on the top of the camera casing.





**Step 2: Use the installation sticker for drilling the holes (gray color for panel mounting, green color for flush mounting).**



**Step 3: Place the VPort P16 over the holes**

#### **Panel Mount**

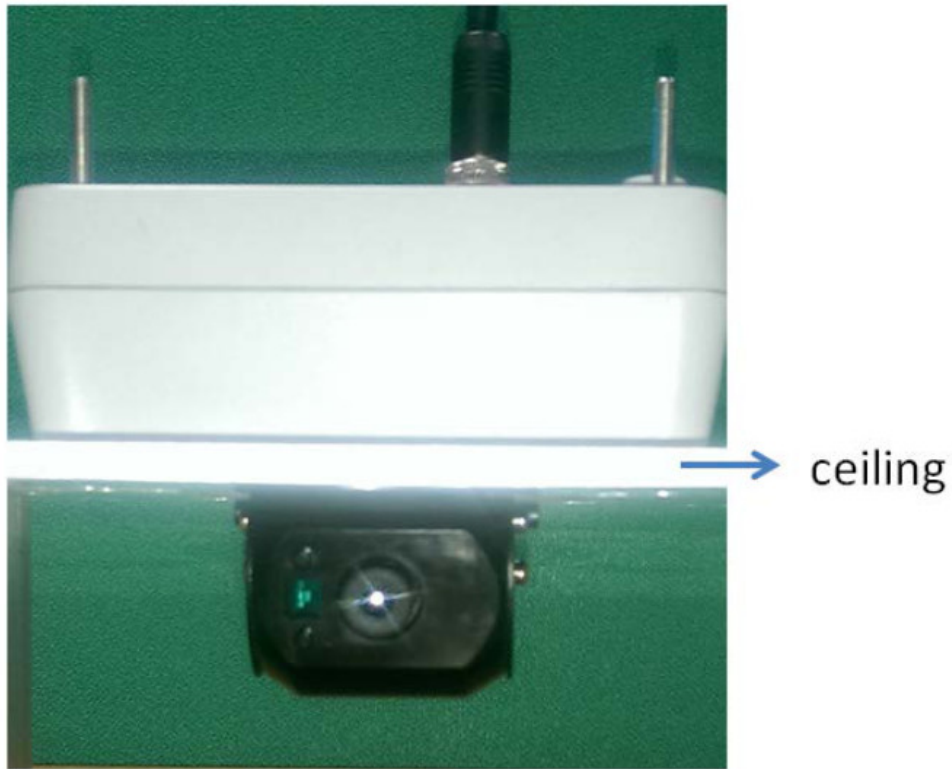
Screw the hex nuts, gaskets, and washers to fix the camera, and then connect the M12 Ethernet cable.



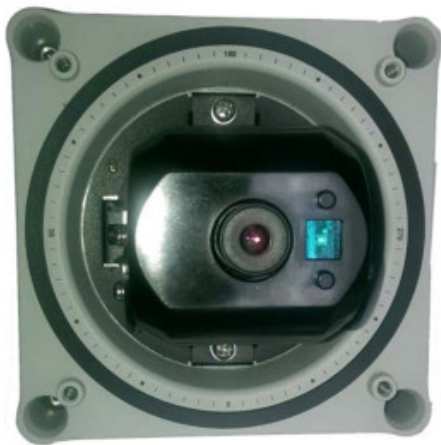
#### **Flush Mount**

Position the camera lens over the hole, and hide the VPort P16's body above the ceiling.





**Step 4:** Loosen the screws that fix the horizontal and vertical lens positions. Next, tune the camera lens position, and connect to the VPort P16's web console to view the video image. After the lens position is correct, fix the screws (5.5 kgf-cm torque is required).



**Step 5:** Fix the top cover to complete the installation.

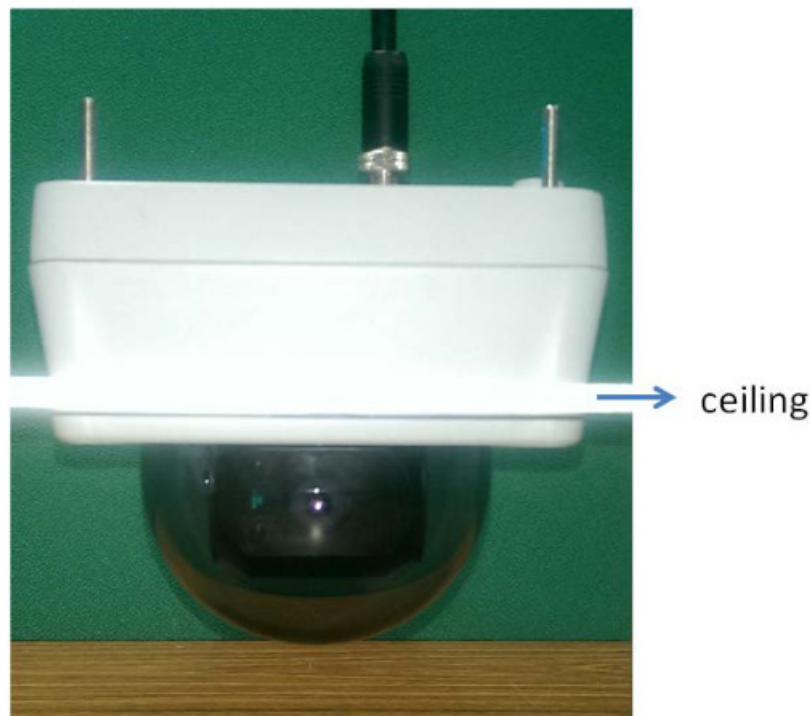
#### **Panel Mount**

Re-screw the 4 top cover screws.



### Flush Mount

Screw the 4 flush mount top screws (provided with the accessory) on the top cover.



**NOTE** Because of the anti-vibration design, for onboard environments 8 kgf-cm torque is required for all mounting screws.

**NOTE** The Nylock screws are designed to be used 2 or 3 times only. We recommend using new Nylock screws if the existing screws have been loosened and retightened 2 times.

**NOTE** The 4 flush mount top cover screws can fix the VPort P16's top cover to ceilings that are 5 mm or less thick. You can provide the M4 screws yourself, or contact Moxa for special support if you require longer top screws.

## Software Installation


### Step 1: Configure the VPort P16's IP address

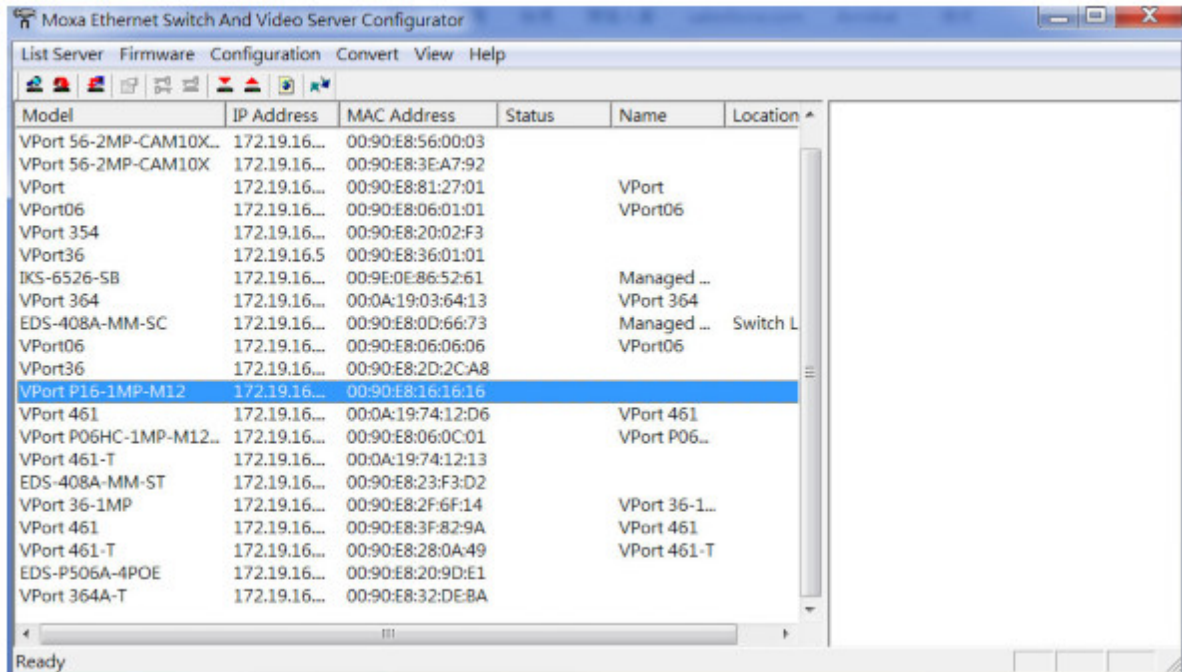
When the VPort P16 is first powered on, the POST (Power On Self Test) will run for a few moments (about 40 seconds). The network environment determines how the IP address is assigned.

### Network Environment with DHCP Server

For this network environment, the unit's IP address will be assigned by the network's DHCP server. Refer to the DHCP server's IP address table to determine the unit's assigned IP address. You may also use the Moxa VPort and EtherDevice Configurator Utility (edscfgui.exe), as described below:

## Using the Moxa VPort and EtherDevice Configurator Utility (edscfgui.exe)

1. Run the **edscfgui.exe** program to search for the VPort. After the utility's window opens, you may also click on the **Search** button  to initiate a search.
2. When the search has concluded, the Model Name, MAC address, IP address, serial port, and HTTP port of the VPort will be listed in the utility's window.



3. Double click the selected VPort, or use the IE web browser to access the VPort's web-based manager (web server).

### Non DHCP Server Network Environments

If your VPort P16 is connected to a network that does not have a DHCP server, then you will need to configure the IP address manually. The default IP address of the VPort 16-M12 is 192.168.127.100 and the default subnet mask is 255.255.255.0. Note that you may need to change your computer's IP address and subnet mask so that the computer is on the same subnet as the VPort.

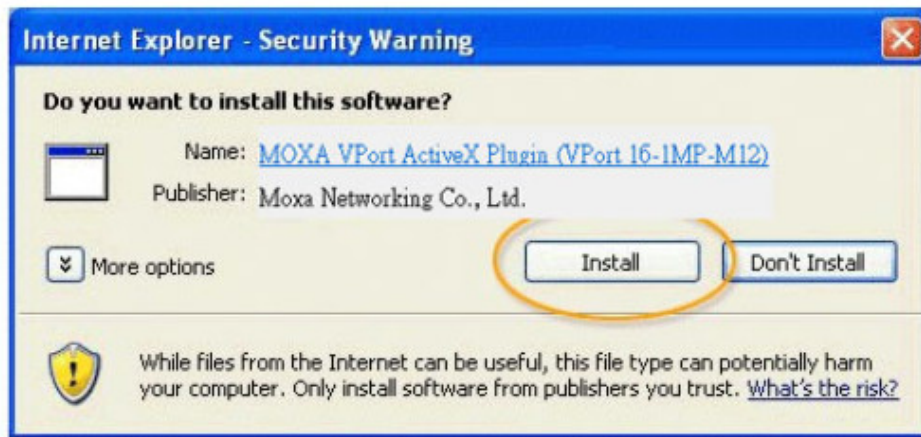
To change the IP address of the VPort manually, access the VPort's web server, and then navigate to the →**System Configuration** → **Network General** page to configure the IP address and other network settings. Check the **Use fixed IP address** to ensure that the IP address you assign is not deleted each time the VPort is restarted.

#### Step 2: Accessing the VPort P16's web-based manager

Type the IP address in the web browser's address input box and then press enter.

#### Step 3: Install the ActiveX Control Plug-in

A security warning message will appear the first time you access the VPort's web-based manager. The message is related to installing the VPort ActiveX Control component on your PC or notebook. Click Yes to install this plug-in to enable the IE web browser for viewing video images.

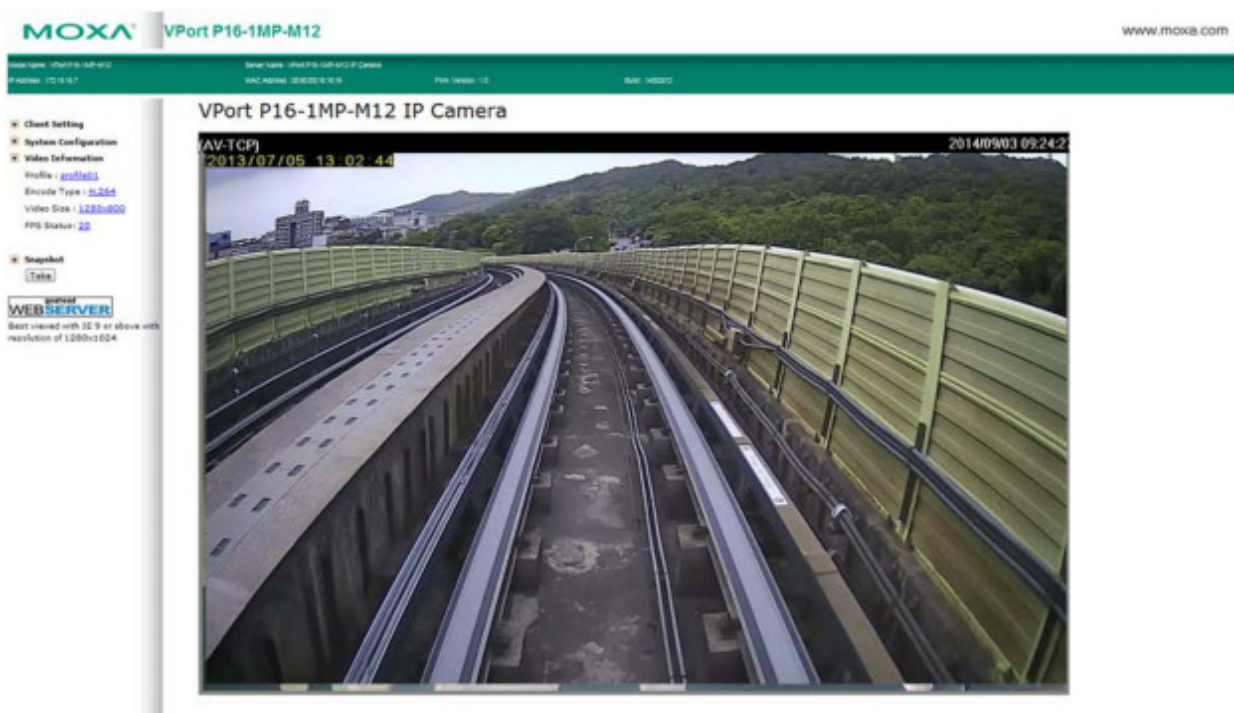


**NOTE** For Windows XP SP2 or above operating systems, the ActiveX Control component will be blocked for system security reasons. In this case, the VPort's security warning message window may not appear. Users should unlock the ActiveX control blocked function or disable the security configuration to enable the installation of the VPort's ActiveX Control component.

#### Step 4: Access the homepage of VPort P16's web-based manager.

After installing the ActiveX Control component, the homepage of the VPort 16's web-based manager will appear. Check the following items to make sure the system was installed properly:

1. Video Images
2. Video Information



#### Step 5: Access the VPort's system configuration.

Click on **System Configuration** to access the overview of the system configuration to change the configuration. **Model Name, Server Name, IP Address, MAC Address** and **Firmware Version** appear in the green bar near the top of the page. Use this information to check the system information and installation. For details of each configuration, check the user's manual on the Moxa website.



VPort P16-1MP-M12

www.moxa.com

Model Name: VPort P16-1MP-M12  
IP Address: 172.18.18.7

Server Name: VPort P16-1MP-M12 IP Camera  
MAC Address: 00:90:ED:10:10:10  
Firm. Version: 1.0  
Build: 14032012

Home  
Main Menu  
Overview  
Profiles  
System  
Network  
Video  
Streaming  
Event  
Actions  
Test (Reserved)

Best viewed with IE 9 or above with resolution of 1280x1024

### System Configuration

Welcome to the System Configuration pages. A brief description of each configuration group is given below. Click on a plus sign in the left pane to expand a group, and then click on the name of the page you would like to open.

Category	Item	Description and Content
Profiles	Configuration	Configure ONVIF Profile settings
	General	Setting Host Name and Date/Time
	Account	Administrator, User and Demo Account Privileges Management
	System Log	System Log and operation information
	System Parameter	System parameters information and Import/Export function
System	Firmware Upgrade	Remote Firmware Upgrade
	Factory Default	Reset to Factory Default
	Reboot	Device will reboot for restarting system
	General	The IP network settings of this VPort
	DDNS	Configure DDNS
Network	Universal PnP	Enable UPnP function
	ToS	Configure ToS(Type of Service)
	Accessible IP	Set up a list to control the access permission of clients by checking their IP address
	SNMP	Configure the SNMP settings
	Modbus/TCP	Enable Modbus/TCP function
	Telnet	Configure Telnet
	LLDP	Configure LLDP
	Image Setting	Configure the information of video image
	Camera Setting	Configure the attributes of video image
	Privacy Mask	Configure the Privacy Mask settings
Video	Video Encoder	Set up the Encode Standard(MPEG or H.264), Size (Resolution), FPS, Quality and Multicast settings
	OSD	Configure OSD settings

## Wiring Requirements



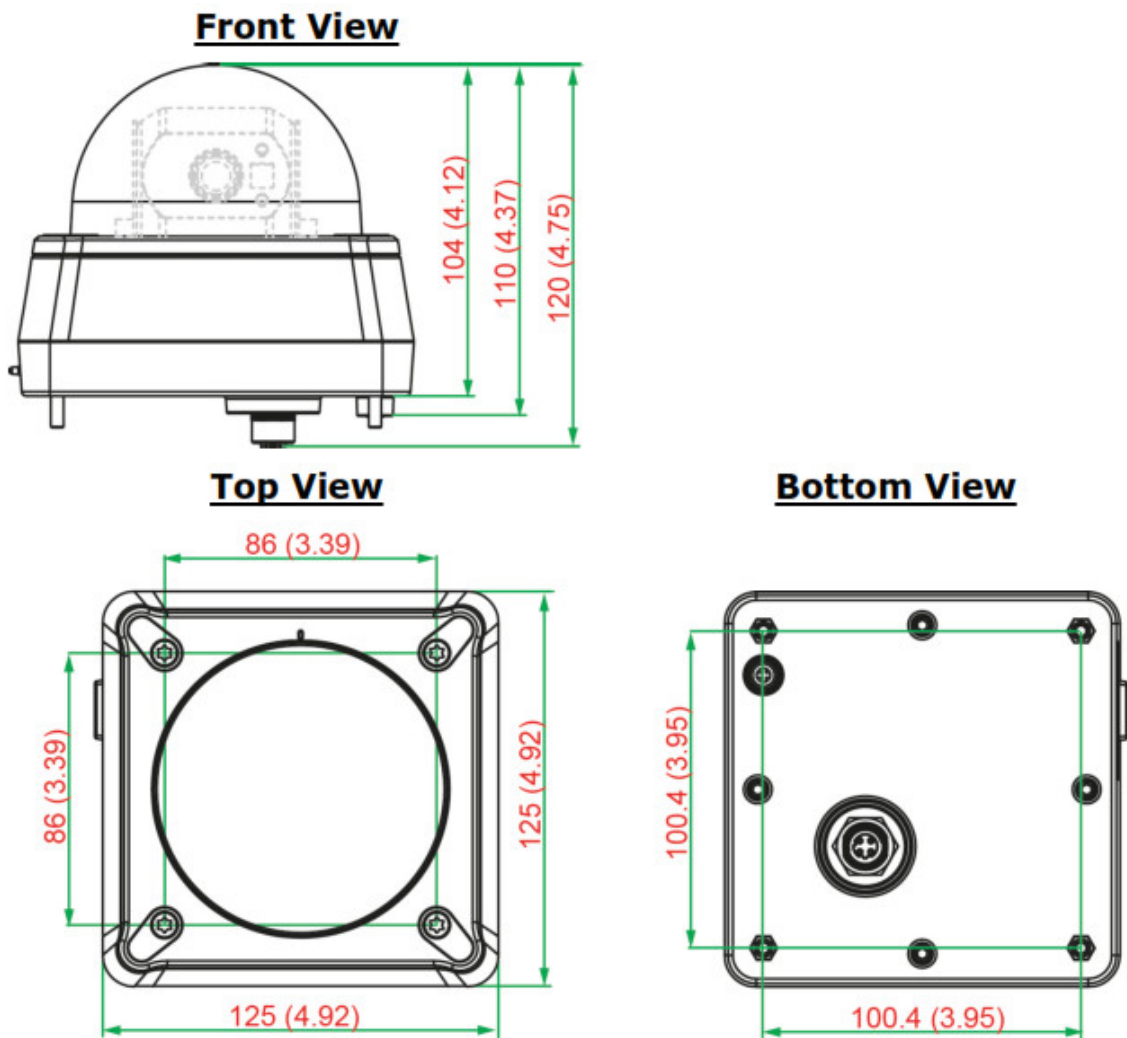
### ATTENTION Safety First!

Be sure to disconnect the power cord before installing and/or wiring your Moxa VPort P16-1MP-M12. Calculate the maximum possible current in each power wire and common wire. Observe all electrical codes dictating the maximum current allowable for each wire size. If the current goes above the maximum ratings, the wiring could overheat, causing serious damage to your equipment.

You should also pay attention to the following:

- Use separate paths to route wiring for power and devices. If power wiring and device wiring paths must cross, make sure the wires are perpendicular at the intersection point.
- You can use the type of signal transmitted through a wire to determine which wires should be kept separate. The rule of thumb is that wiring that shares similar electrical characteristics can be bundled together.
- Keep input wiring and output wiring separated.
- It is strongly advised that you label wiring to all devices in the system when necessary.

## Dimensions (unit = mm (inch))



## Specifications

Input Current	0.35 A @ 48 VDC
Operating Temperature	Standard Models: -25 to 55°C (-13 to 131°F) Wide Temp. Models: -40 to 70°C (-40 to 158°F)
Storage Temperature	-40 to 85°C (-40 to 185°F)

**MOXA®**

© 2021 Moxa Inc. All rights reserved.

P/N: 1802000161012



## Documents / Resources

VPort P16-1MP-M12 Series  
Quick Installation Guide

Moxa IP Camera

Version 2.1, January 2021

Technical Support Contact Information  
[www.moxa.com/support](http://www.moxa.com/support)

**MOXA**

© 2021 Moxa Inc. All rights reserved.

PDF GENERATED BY  
MOXA PDF GENERATOR

[MOXA P16-1MP-M12 IP Camera](#) [pdf] Installation Guide  
P16-1MP-M12, P16-1MP-M12 IP Camera, P16-1MP-M12, IP Camera