



MOXA MXview ToGo Apps Installation Guide

[Home](#) » [MOXA](#) » MOXA MXview ToGo Apps Installation Guide 

Contents

- 1 MXview ToGo Apps**
 - 1.1 Overview
 - 1.2 MXview ToGo Requirements
 - 1.3 MXview Server Requirements
 - 1.4 Installation
 - 1.5 Logging Out
 - 1.6 1. Dashboard
 - 1.7 2. Network
 - 1.8 3. Event
 - 1.9 4. Scan
 - 1.10 5. Settings
 - 1.11 6. Network Topology
- 2 Documents / Resources**
 - 2.1 References
- 3 Related Posts**

MXview ToGo Apps

Quick Installation Guide Version 2.0, January 2021

Technical Support Contact Information www.moxa.com/support



© 2021 Moxa Inc. All rights reserved.

P/N: 18020000000C1 *18020000000C1*

Overview

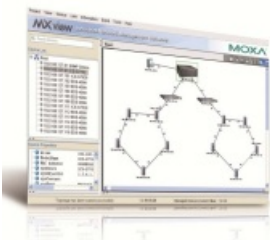
MXview ToGo allows you to use your mobile devices to monitor network devices that are managed by Moxa's MXview industrial network management software. With MXview ToGo, you can view network status and system events anytime, anywhere. When your MXview server is connected to the Internet, you can receive real-time notifications on your mobile devices. MXview ToGo enables you to respond to abnormal network events the moment they occur and helps to minimize msystem downtime



MXview ToGo Requirements

Device	Operating System	Storage
iPhone	iOS 8.0 or later	20 MB
Android phone/tablet	Android 4.0.3 or later	20 MB

MXview Server Requirements



- MXview version 2.6 or later
- Internet connection for push notifications

Installation

1. Install and configure MXview on a server in your network. For more information, see the documentation that comes with MXview.
2. On your mobile device, download and install MXview ToGo from the Apple App Store or Google Play.

Logging In



On the Login page, enter the following information and click Log In to log in to MXview ToGo and connect to your MXview server.

- IP address of your MXview server
- Username
- Password

Tip: To try MXview ToGo without connecting to an MXview server, enable Demo Mode.

Logging Out

To log out of MXview ToGo and disconnect from your MXview server, tap **More > Settings > Log Out**.

MXview ToGo Functions

In this section, we describe the functionality provided by the five buttons at the bottom of the MXview ToGo panel:

1. Dashboard
2. Network
3. Event
4. Scan
5. More
 - Settings
 - Network Topology

1. Dashboard



The Dashboard page displays the number of monitored devices for the following network statuses:

- Normal: Devices are operating normally.

- Warning: Devices are operating but with warning status.
- Critical: Devices are operating with critical issues or may not be operating. Immediate attention is required.

Tap a number to view devices with a Warning or Critical status.

2. Network



The Network page displays network groups and devices on your MXview network.


To view detailed device information, tap a device.


Swipe left to view detailed information pages for a device.

• Device Status



The Device Status page displays basic device information (such as IP address and firmware version).

To locate a device, tap .

To contact the administrator of a managed device, tap . NOTE You can set the administrator contact information on each device.

• Event List



You can view the latest 100 event logs for a device on the Event List page.

To view detailed log information, tap an event.

• Device Properties



The Device Properties page displays detailed device information on the MXview server.

• Device Port



The Device Port page displays the name and status of each port on a device.

• Port Status



You can access the Port Status page to view:

Whether a port is up or down

The information of its neighboring devices

• Port Properties



The Port Properties page displays detailed port information (such as the port number and speed).

3. Event



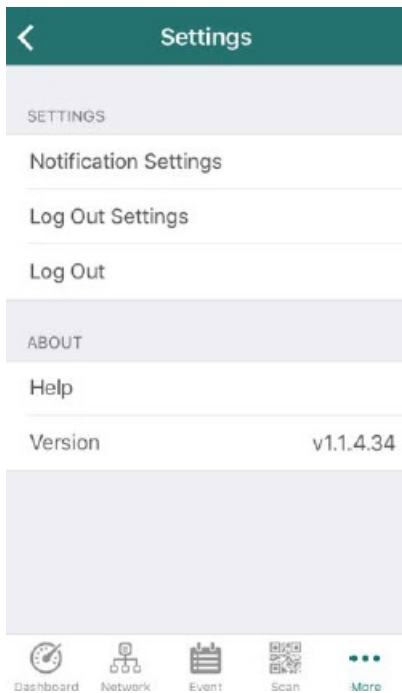
The Event List page displays the latest 100 event logs for all devices on the MXview server.

4. Scan



To view the status of a device on MXview ToGo, use the Scan page to scan the QR code on a Moxa device managed by the MXview server. The Device Status page is displayed.

5. Settings

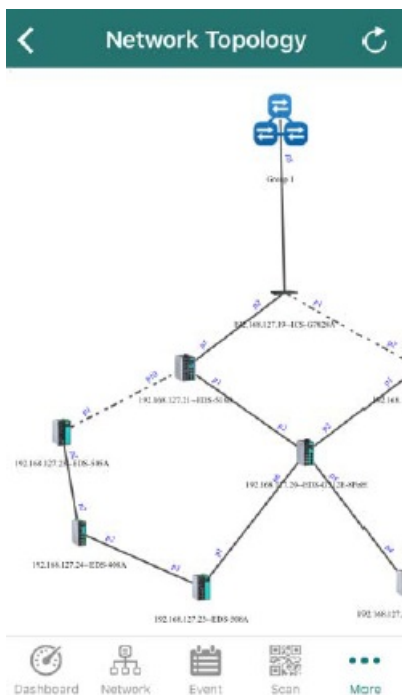


Use the Settings page to configure notification and logout settings.

Notification Settings: Enter your email address, which you can use to configure push notifications on the MXview server.

Log Out Settings: Configure the default session inactivity timeout (between 10 to 60 minutes).

6. Network Topology



You can see whole network topology with physical connections which are identical to the topology in MXview server. By double-tapping on the screen, you can easily zoom in on the topology. By tapping on the devices, you can check the device's detailed information.

Documents / Resources

<div><div>MXview ToGo</div><div>Quick Installation Guide</div><div>Version 2.0, January 2021</div><div>Technical Support Contact Information www.moxa.com/support</div><div> © 2021 Moxa Inc. All rights reserved.</div><div><small>PDF GENERATED BY MOXA</small> <small>MOXA INC. 2021 01 20 10:00:00</small></div></div>	<div><div>MOXA MXview ToGo Apps [pdf] Installation Guide</div><div>MXview ToGo Apps, MXview ToGo, Apps</div></div>
---	--

References

- [Moxa - Support](#)