



MOXA MXconfig Series Industrial Network Configuration Tool Owner's Manual

[Home](#) » [MOXA](#) » MOXA MXconfig Series Industrial Network Configuration Tool Owner's Manual 

MOXA MXconfig Series Industrial Network Configuration Tool Owner's Manual



Features and Benefits

- Mass managed function configuration increases deployment efficiency and reduces setup time
- Mass configuration duplication reduces installation costs
- Link sequence detection eliminates manual setting errors
- Configuration overview and documentation for easy status review and management
- Three user privilege levels enhance security and management flexibility

Contents

- [1 Introduction](#)
- [2 Specifications](#)
- [3 Documents / Resources](#)
 - [3.1 References](#)
- [4 Related Posts](#)

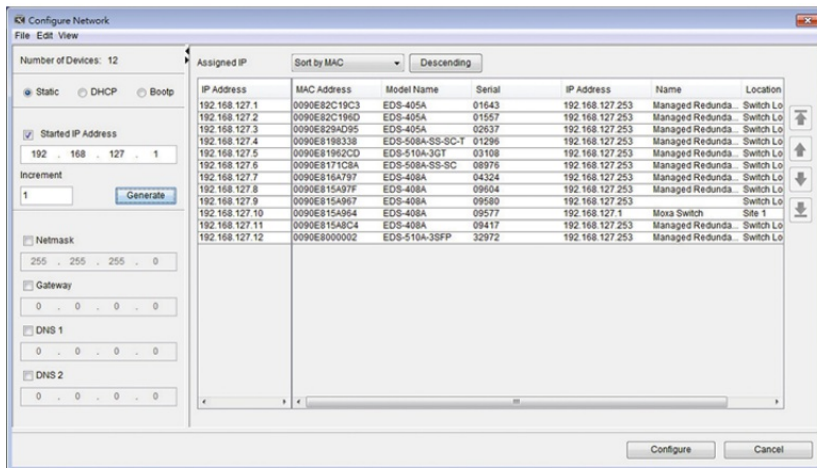
Introduction

Moxa's MXconfig is a comprehensive Windows-based utility that is used to install, configure, and maintain multiple Moxa devices on industrial networks. This suite of useful tools helps users set the IP addresses of multiple devices with one click, configure the redundant protocols and VLAN settings, modify multiple network configurations of multiple Moxa devices, upload firmware to multiple devices, export or import configuration files, copy configuration settings across devices, easily link to web and Telnet consoles, and test device connectivity. MXconfig gives device installers and control engineers a powerful and easy way to mass configure devices, and it effectively reduces the setup and maintenance cost.

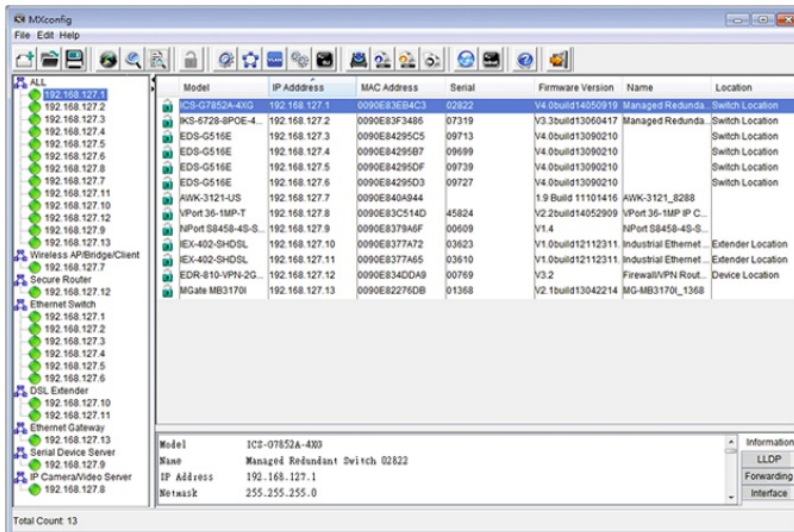
Device Discovery and Fast Group Configuration

- Easy broadcast search of the network for all supported Moxa managed Ethernet devices
- Mass network setting (such as IP addresses, gateway, and DNS) deployment reduces setup time
- Deployment of mass managed functions increases configuration efficiency
- Security wizard for convenient setup of security-related parameters
- Multiple grouping for easy classification
- User-friendly port selection panel provides physical port descriptions
- VLAN Quick-Add Panel speeds up setup time
- Deploy multiple devices with one click using CLI execution

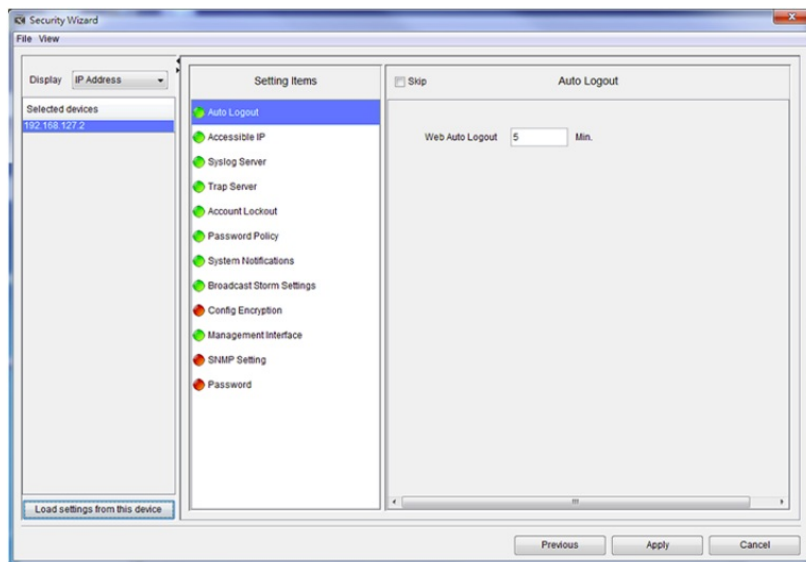
Network Setting



Multiple Grouping



Security Wizard



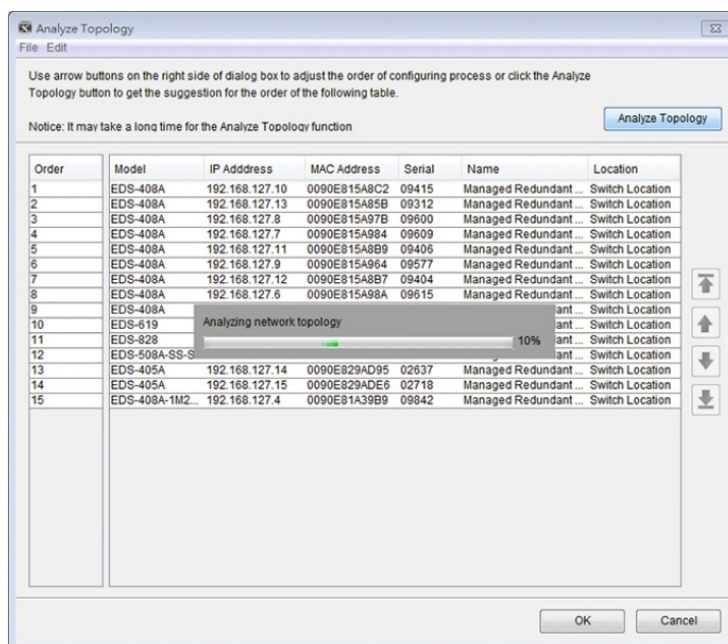
Fast Configuration Deployment

- Quick configuration: copies a specific setting to multiple devices and changes IP addresses with one click

Link Sequence Detection

- Link sequence detection eliminates manual configuration errors and avoids disconnections, especially when configuring redundancy protocols, VLAN settings, or firmware upgrades for a network in a daisy-chain topology (line topology).
- Link Sequence IP setting (LSIP) prioritizes devices and configures IP addresses by link sequence to enhance deployment efficiency, especially in a daisy-chain topology (line topology).

Analyze Topology



Unlock Devices and User Privileges

- Mass device unlocking and password file export for quick unlocks.
- Three user privilege levels to enhance management flexibility and security: Admin, Supervisor, and Operator.²

Configuration Overview and Documentation

- Useful mass status overview and configuration check for each managed function.
- Generate reports on each managed function for multiple devices in the network.²

Status Overview

Status of Communication Redundancy

File Edit

Devices

RSTP

Turbo Ring

Turbo Ring V2

Turbo Chain

IP	Active Protocol	Ring 1 Enable	Ring 1 Master	Ring 1 Port	Ring 1 Broken	Ring 2 Enable	Ring 2 Master	Ring 2 Port	Ring 2 Broken	Coupling Mode	Coupling Port
192.168.127.1	Turbo Ring V2	Enable	no	1 forwarding	normal	Disable	no	1 notRedundant	N/A	Dual Homing	1 notRedundant
192.168.127.2	Turbo Ring V2	Enable	no	2 forwarding	normal	Disable	no	1 notRedundant	N/A	Dual Homing	1 notRedundant
192.168.127.3	Turbo Ring V2	Enable	no	1 forwarding	normal	Disable	no	1 notRedundant	N/A	Dual Homing	1 notRedundant
192.168.127.4	Turbo Ring V2	Enable	no	2 forwarding	normal	Disable	no	1 notRedundant	N/A	Dual Homing	1 notRedundant
192.168.127.5	Turbo Ring V2	Enable	no	1 forwarding	normal	Disable	no	1 notRedundant	N/A	Dual Homing	1 notRedundant
192.168.127.6	Turbo Ring V2	Enable	no	2 forwarding	normal	Disable	no	1 notRedundant	N/A	Dual Homing	1 notRedundant
192.168.127.7	Turbo Ring V2	Enable	no	1 forwarding	normal	Disable	no	1 notRedundant	N/A	Dual Homing	1 notRedundant
192.168.127.8	Turbo Ring V2	Enable	no	2 forwarding	normal	Disable	no	1 notRedundant	N/A	Dual Homing	1 notRedundant
192.168.127.9	Turbo Ring V2	Enable	no	1 forwarding	normal	Disable	no	1 notRedundant	N/A	Dual Homing	1 notRedundant
192.168.127.10	Turbo Ring V2	Enable	no	2 forwarding	normal	Disable	no	1 notRedundant	N/A	Dual Homing	1 notRedundant
192.168.127.11	Turbo Ring V2	Enable	no	1 forwarding	normal	Disable	no	1 notRedundant	N/A	Dual Homing	1 notRedundant
192.168.127.12	Turbo Ring V2	Enable	no	2 forwarding	normal	Disable	no	1 notRedundant	N/A	Dual Homing	1 notRedundant
192.168.127.13	Turbo Ring V2	Enable	yes	1 forwarding	normal	Disable	no	1 notRedundant	N/A	Dual Homing	1 notRedundant
192.168.127.14	Turbo Ring V2	Enable	no	2 blocking	normal	Disable	no	1 notRedundant	N/A	Dual Homing	1 notRedundant
192.168.127.15	Turbo Ring V2	Enable	no	1 forwarding	normal	Disable	no	1 notRedundant	N/A	Dual Homing	1 notRedundant
192.168.127.16	Turbo Ring V2	Enable	no	2 forwarding	normal	Disable	no	1 notRedundant	N/A	Dual Homing	1 notRedundant

Progress

All Finished! 100%

Close

File Expert

	A	B	C	D	E	F	G	H	I	J	K	L	M
1	IP	Active Protocol	Ring 1 Enable	Ring 1 Master	Ring 1 Port	Ring 1 Broken	Ring 2 Enable	Ring 2 Master	Ring 2 Port	Ring 2 Broken	Coupling Enable	Coupling Mode	Coupling Port
2	192.168.127.1	Turbo Ring V2	Enable	no	1 forwarding	normal	Disable	no	1 notRedundant	N/A	Disable	Dual Homing	1 notRedundant
3	192.168.127.2	Turbo Ring V2	Enable	no	2 forwarding	normal	Disable	no	1 notRedundant	N/A	Disable	Dual Homing	1 notRedundant
4	192.168.127.3	Turbo Ring V2	Enable	no	1 forwarding	normal	Disable	no	1 notRedundant	N/A	Disable	Dual Homing	1 notRedundant
5	192.168.127.4	Turbo Ring V2	Enable	no	2 forwarding	normal	Disable	no	1 notRedundant	N/A	Disable	Dual Homing	1 notRedundant
6	192.168.127.5	Turbo Ring V2	Enable	no	1 forwarding	normal	Disable	no	1 notRedundant	N/A	Disable	Dual Homing	1 notRedundant
7	192.168.127.6	Turbo Ring V2	Enable	no	2 forwarding	normal	Disable	no	1 notRedundant	N/A	Disable	Dual Homing	1 notRedundant
8	192.168.127.7	Turbo Ring V2	Enable	no	1 forwarding	normal	Disable	no	1 notRedundant	N/A	Disable	Dual Homing	1 notRedundant
9	192.168.127.8	Turbo Ring V2	Enable	no	2 forwarding	normal	Disable	no	1 notRedundant	N/A	Disable	Dual Homing	1 notRedundant
10	192.168.127.9	Turbo Ring V2	Enable	no	1 forwarding	normal	Disable	no	1 notRedundant	N/A	Disable	Dual Homing	1 notRedundant
11	192.168.127.10	Turbo Ring V2	Enable	yes	1 forwarding	normal	Disable	no	1 notRedundant	N/A	Disable	Dual Homing	1 notRedundant
12					2 blocking	normal	Disable	no	1 notRedundant	N/A	Disable	Dual Homing	1 notRedundant

Specifications

Hardware Requirements

RAM: 2 GB

Hardware Disk Space:10 GB

OS :Windows 7 (32/64-bit), Windows 10 (32-64-bit), Windows Server 2012 (32/64-bit)

CPU: 2 GHz or faster dual-core CPU

Supported Devices

AWK Products	MXconfig Java Version:AWK-1121 Series (v1.4 or higher) AWK-1127 Series (v1.4 or higher) AWK-1131A Series (v1.11 or higher) AWK-1137C Series (v1.3 or higher) AWK-3121 Series (v1.10 or higher)AWK-3121-SSC-RTG Series (v1.4 or higher) AWK-3121-M12-RTG Series (v1.4 or higher) AWK-3131 Series (v1.2 or higher)AWK-3131-M12-RCC Series (v1.0 or higher) AWK-3131A Series (v1.3 or higher)AWK-3131A-RTG Series (v1.8 or higher) AWK-4121 Series (v1.10 or higher) AWK-4131 Series (v1.2 or higher)AWK-4131A Series (v1.3 or higher) AWK-5222 Series (v1.7 or higher) AWK-5232 Series (v1.3 or higher) AWK-6222 Series (v1.7 or higher) AWK-6232 Series (v1.3 or higher)
EDR Products	MXconfig Java Version:EDR-810 Series (v3.2 or higher) EDR-G902 Series (v4.2 or higher) EDR-G903 Series (v4.2 or higher) MXconfig Non-Java Version: EDR-810 Series (v3.2 or higher) EDR-G902 Series (v4.2 or higher) EDR-G903 Series (v4.2 or higher)EDR-G9010 Series (v1.0 or higher)
EDS Products	MXconfig Java Version:EDS-405A/408A Series (v3.1 or higher) EDS-405A/408A-EIP Series (v3.1 or higher) EDS-405A/408A-PN Series (v3.1 or higher) EDS-405A-PTP Series (v3.3 or higher)EDS-505A/508A/516A Series (v3.1 or higher) EDS-510A Series (v3.1 or higher) EDS-518A Series (v3.1 or higher)EDS-510E/518E Series (v4.0 or higher) EDS-528E Series (v5.0 or higher)EDS-G508E/G512E/G516E Series (v4.0 or higher) EDS-G512E-8PoE Series (v4.0 or higher)EDS-608/611/616/619 Series (v3.1 or higher) EDS-728 Series (v3.1 or higher)EDS-828 Series (v3.1 or higher) EDS-G509 Series (v3.1 or higher) EDS-P510 Series (v3.1 or higher)EDS-P510A-8PoE Series (v3.1 or higher) EDS-P506A-4PoE Series (v3.1 or higher) EDS-P506E-4PoE Series (v5.5 or higher) MXconfig Non-Java Version:EDS-405A/408A Series (v3.1 or higher) EDS-405A/408A-EIP Series (v3.1 or higher) EDS-405A/408A-PN Series (v3.1 or higher) EDS-405A-PTP Series (v3.3 or higher)EDS-505A/508A/516A Series (v3.1 or higher) EDS-510A Series (v3.1 or higher)EDS-518A Series (v3.1 or higher)EDS-510E/518E Series (v4.0 or higher) EDS-528E Series (v5.0 or higher)EDS-G508E/G512E/G516E Series (v4.0 or higher) EDS-G512E-8PoE Series (v4.0 or higher)EDS-608/611/616/619 Series (v3.1 or higher) EDS-728 Series (v3.1 or higher)EDS-828 Series (v3.1 or higher) EDS-G509 Series (v3.1 or higher) EDS-P510 Series (v3.1 or higher)EDS-P510A-8PoE Series (v3.1 or higher) EDS-P506A-4PoE Series (v3.1 or higher) EDS-P506E-4PoE Series (v5.5 or higher)
ICS Products	MXconfig Java Version:ICS-G7526/G7528 Series (v3.1 or higher) ICS-G7826/G7828 Series (v3.1 or higher)ICS-G7748/G7750/G7752 Series (v3.1 or higher) ICS-G7848/G7850/G7852 Series (v3.1 or higher) ICS-G7526A/G7528A Series (v4.0 or higher)ICS-G7826A/G7828A Series (v4.0 or higher)ICS-G7748A/G7750A/G7752A Series (v4.0 or higher) ICS-G7848A/G7850A/G7852A Series (v4.0 or higher) MXconfig Non-Java Version:ICS-G7826/G7828 Series (v3.1 or higher)ICS-G7748/G7750/G7752 Series (v3.1 or higher) ICS-G7848/G7850/G7852 Series (v3.1 or higher) ICS-G7526A/G7528A Series (v4.0 or higher)ICS-G7826A/G7828A Series (v4.0 or higher)ICS-G7748A/G7750A/G7752A Series (v4.0 or higher) ICS-G7848A/G7850A/G7852A Series (v4.0 or higher)

IEX Products	MXconfig Java Version:IEX-402 Series (v1.0 or higher) IEX-408E Series (v4.0 or higher) MXconfig Non-Java Version: IEX-402 Series (v1.0 or higher) IEX-408E Series (v4.0 or higher)
IKS Products	MXconfig Java Version:IKS-G6524 Series (v3.1 or higher) IKS-G6824 Series (v3.1 or higher)IKS-6726A/6728A Series (v4.0 or higher) IKS-G6524A Series (v4.0 or higher)IKS-G6824A Series (v4.0 or higher)IKS-6728A-8PoE Series (v4.0 or higher) MXconfig Non-Java Version:IKS-G6524 Series (v3.1 or higher) IKS-G6824 Series (v3.1 or higher)IKS-6726A/6728A Series (v4.0 or higher) IKS-G6524A Series (v4.0 or higher)IKS-G6824A Series (v4.0 or higher)IKS-6728A-8PoE Series (v4.0 or higher)
ioLogik Products	MXconfig Java Version:ioLogik E1200 Series (v3.2 or higher)
ioThinx Products	MXconfig Java Version:ioThinx 4510 Series (v1.3 or higher)
MDS Products	MXconfig Java Version:MDS-G4012 Series (v1.1 or higher) MDS-G4020 Series (v1.1 or higher) MDS-G4028 Series (v1.1 or higher) MXconfig Non-Java Version:MDS-G4012 Series (v1.1 or higher) MDS-G4020 Series (v1.1 or higher) MDS-G4028 Series (v1.1 or higher) MDS-G4012-L3 Series (v2.0 or higher) MDS-G4020-L3 Series (v2.0 or higher) MDS-G4028-L3 Series (v2.0 or higher)
MGate Products	MXconfig Java Version:MGate MB3170/MB3270 Series (v4.2 or higher) MGate MB3180 Series (v2.2 or higher)MGate MB3280 Series (v4.1 or higher) MGate MB3480 Series (v3.2 or higher) MGate MB3660 Series (v2.5 or higher) MGate EIP3170 Series (v2.0 or higher) MGate EIP3270 Series (v2.0 or higher) MGate 5101-PBM-MN Series (v2.2 or higher) MGate 5102-PBM-PN Series (v2.3 or higher) MGate 5103 Series (v2.2 or higher)
	MGate 5105-MB-EIP Series (v4.3 or higher) MGate 5108 Series (v2.4 or higher)MGate 5208 Series (v2.4 or higher) MGate 5109 Series (v2.3 or higher) MGate 5111 Series (v1.3 or higher) MGate 5114 Series (v1.3 or higher) MGate 5118 Series (v2.2 or higher) MGate 5217 Series (v1.0 or higher)
NPort Products	MXconfig Java Version:NPort S8000 Series (v1.3 or higher) NPort S9000 Series (v1.0 or higher) NPort 5110 Series (v3.8 or higher) NPort 5130/5150 Series (v3.8 or higher)NPort 5000AI-M12 Series (v1.4 or higher) NPort 5200 Series (v2.10 or higher) NPort 5400 Series (v3.13 or higher) NPort 5600 Series (v3.9 or higher)NPort 5100A Series (v1.5 or higher) NPort 5200A Series (v1.5 or higher)NPort 5610-8-DT/5610-8-DT-J/5650-8-DT/5650I-8-DT/5650-8-DT-J Series (v2.6 or higher)NPort 5610-8-DTL/5650-8-DTL/5650I-8-DTL Series (v1.5 or higher) NPort IA5000 Series (v1.6 or higher)NPort IA5150A/IA5150AI/IA5250A/IA5250AI Series (v1.4 or higher) NPort IA5450A/IA5450AI Series (v1.6 or higher)NPort 6000 Series (v1.21 or higher)

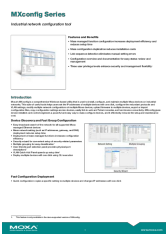
PT Products	MXconfig Java Version:PT-7528 Series (v3.1 or higher) PT-7710 Series (v3.1 or higher) PT-7728 Series (v3.1 or higher)PT-7828/7828-PTP Series (v3.1 or higher) PT-G7509 Series (v3.1 or higher)PT-508/510 Series (v3.1 or higher) PT-G7728 Series (v5.4 or higher) PT-G7828 Series (v5.4 or higher) MXconfig Non-Java Version:PT-7528 Series (v3.1 or higher) PT-7710 Series (v3.1 or higher) PT-7728 Series (v3.1 or higher)PT-7828/7828-PTP Series (v3.1 or higher) PT-G7509 Series (v3.1 or higher)PT-508/510 Series (v3.1 or higher) PT-G7728 Series (v5.4 or higher) PT-G7828 Series (v5.4 or higher)
SDS Products	MXconfig Non-Java Version: SDS-3008 Series (v2.1 or higher) SDS-3016 Series (v2.1 or higher)
TAP Products	MXconfig Java Version:TAP-213 Series (v1.2 or higher) TAP-323 Series (v1.8 or higher)
TN Products	MXconfig Java Version:TN-4500A Series (v3.5 or higher)TN-5508/5510 Series (v3.1 or higher) TN-5516/5518 Series (v3.1 or higher) TN-5916 Series (v1.2 or higher) MXconfig Non-Java Version:TN-4500A Series (v3.5 or higher) TN-4908 Series (v1.0 or higher)TN-5508/5510 Series (v3.1 or higher) TN-5516/5518 Series (v3.1 or higher) TN-5916 Series (v1.2 or higher)TN-G6500 Series (v5.0 or higher)
VPort Products	MXconfig Java Version:VPort 26A-1MP Series (v1.2 or higher) VPort 36-1MP Series (v1.1 or higher)VPort P06-1MP-M12 Series (v2.2 or higher)
WAC Products	MXconfig Java Version:WAC-1001 Series (v2.1 or higher) WAC-2004 Series (v1.6 or higher)

© Moxa Inc. All rights reserved. Updated Jan 09, 2023.

This document and any portion thereof may not be reproduced or used in any manner whatsoever without the express written permission of Moxa Inc. Product specifications subject to change without notice. Visit our website for the most up-to-date product information.



Documents / Resources

	MOXA MXconfig Series Industrial Network Configuration Tool [pdf] Owner's Manual AWK-1121 Series, AWK-1127 Series, AWK-1131A Series, AWK-1137C Series, AWK-3121 Series, AWK-3121-SSC-RTG Series, AWK-3121-M12-RTG Series, AWK-3131 Series, AWK-3131-M12-RCC Series, AWK-3131A Series, AWK-3131A-RTG Series, AWK-4121 Series, AWK-4131 Series, AWK-4131A Series, AWK-5222 Series, AWK-5232 Series, AWK-6222 Series, AWK-6232 Series, EDR-810 Series, EDR-G902 Series, EDR-G903 Series, EDR-G9010 Series., MXconfig Series Industrial Network Configuration Tool, MXconfig Series Network Configuration Tool, Industrial Network Configuration Tool, Network Configuration Tool, Industrial Network Configuration, Network Configuration, Industrial Configuration, Configuration
---	---

References

- [M Moxa - Your Trusted Partner in Automation](#)

