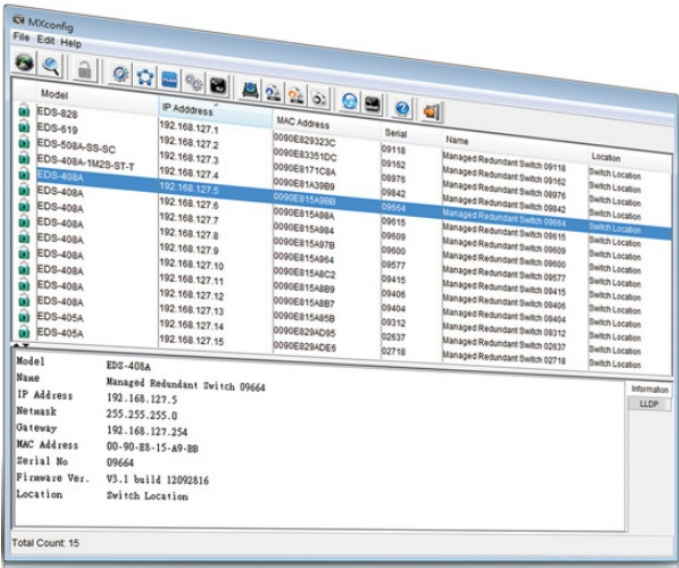


MOXA MXconfig Series Configuration Software Tool Owner’s Manual

[Home](#) » [MOXA](#) » MOXA MXconfig Series Configuration Software Tool Owner’s Manual 

MOXA MXconfig Series Configuration Software Tool Owner’s Manual



Contents

- [1 MXconfig Series \(non-Java version\) Release Notes](#)
- [2 Applicable Products](#)
- [3 Supported Operating Systems](#)
- [4 New Features](#)
- [5 Enhancements](#)
- [6 Bugs Fixed](#)
- [7 Applicable Products](#)
- [8 Supported Operating Systems](#)
- [9 New Features](#)
- [10 Enhancements](#)
- [11 Bugs Fixed](#)
- [12 Applicable Products](#)
- [13 Supported Operating Systems](#)
- [14 New Features](#)
- [15 Enhancements](#)
- [16 Bugs Fixed](#)
- [17 Applicable Products](#)
- [18 Supported Operating Systems](#)
- [19 New Features](#)
- [20 Bugs Fixed](#)
- [21 Applicable Products](#)
- [22 Supported Operating Systems](#)
- [23 New Features](#)
- [24 Applicable Products](#)
- [25 Supported Operating Systems](#)
- [26 New Features](#)
- [27 Enhancements](#)
- [28 Applicable Products](#)
- [29 Supported Operating Systems](#)
- [30 New Features](#)
- [31 Applicable Products](#)
- [32 Supported Operating Systems](#)
- [33 New Features](#)
- [34 Applicable Products](#)
- [35 Supported Operating Systems](#)
- [36 New Features](#)
- [37 Documents / Resources](#)
 - [37.1 References](#)
- [38 Related Posts](#)

MXconfig Series (non-Java version) Release Notes

Version: v3.3.0	Build: 24040918
Release Date: May 07, 2024	

Applicable Products

AWK-1151C Series, AWK-3252A Series, AWK-4252A Series, EDR-8010 Series, EDR-810 Series, EDRG9010 Series, EDR-G902 Series, EDR-G903 Series, EDS-4008 Series, EDS-4009 Series, EDS-405A Series, EDS-408A Series, EDS-505A Series, EDS-508A Series, EDS-510A Series, EDS-510E Series, EDS-516A Series, EDS-518A Series, EDS-518E Series, EDS-528E Series, EDS-608 Series, EDS-611 Series, EDS-616 Series, EDS-619 Series, EDS-G4008 Series, EDS-G4012 Series, EDS-G4014 Series, EDS-G508E Series, EDS-G509 Series, EDS-G512E

Series, EDS-G516E Series, EDS-P506E Series, EDS-P510 Series, EDS-P510A Series, ICS-G7526A Series, ICS-G7528A Series, ICS-G7748A Series, ICS-G7750A Series, ICS-G7752A Series, ICS-G7826A Series, ICS-G7828A Series, ICS-G7848A Series, ICS-G7850A Series, ICS-G7852A Series, IKS-6726A Series, IKS-6728A Series, IKS-G6524A Series, IKS-G6824A Series, MDS-G4012 Series, MDS-G4012-L3 Series, MDS-G4020 Series, MDS-G4020-L3 Series, MDS-G4028 Series, MDS-G4028-L3 Series, OnCell G4302-LTE4 Series, PT-508 Series, PT510 Series, PT-7528 Series, PT-G510 Series, PT-G7728 Series, PT-G7828 Series, SDS-3008 Series, SDS-3016 Series, TN-4500A Series, TN-4900 Series, TN-G4500 Series, TN-G6500 Series

Supported Operating Systems

Windows 10, Windows 11, Windows 7, Windows Server 2016, Windows Server 2019

New Features

- Added support for additional devices: EDR-8010 Series.

Enhancements

- MX config can now be executed without administrator privileges.

Bugs Fixed

- If an error occurs during the execution of the SNMP Configuration function for TN-5500A Series devices, the operation will fail, but MXconfig will display a success message.
- After successfully modifying the SNMP settings for TN-5500A Series devices, rebooting the devices will cause their SNMP settings to revert to the default values.
- If the Email Warning function is executed with an invalid Mail Server IP/Name value, the operation will fail, but MXconfig will display a success message.

Changes

N/A

Notes

N/A

Version: v3.2.0	Build: 23082910
Release Date: Aug 31, 2023	

Applicable Products

AWK-1151C Series, AWK-3252A Series, AWK-4252A Series, EDR-810 Series, EDR-G9010 Series, EDR-G902 Series, EDR-G903 Series, EDS-4008 Series, EDS-4009 Series, EDS-405A Series, EDS408A Series, EDS-505A Series, EDS-508A Series, EDS-510A Series, EDS-510E Series, EDS-516A Series, EDS-518A Series, EDS-518E Series, EDS-528E Series, EDS-608 Series, EDS-611 Series, EDS616 Series, EDS-619 Series, EDS-G4008 Series, EDS-G4012 Series, EDS-G4014 Series, EDS-G508E Series, EDS-G509 Series, EDS-G512E Series, EDS-G516E Series, EDS-P510 Series, EDS-P510A Series, ICS-G7526A Series, ICS-G7528A Series, ICS-G7748A Series, ICS-G7750A Series, ICS-G7752A Series, ICS-G7826A Series, ICS-G7828A Series, ICS-G7848A Series, ICS-G7850A Series, ICS-G7852A Series, IEX-402 Series, IKS-6726A Series, IKS-6728A Series, IKS-G6524A Series, IKS-G6824A Series, MDS-G4012 Series, MDS-G4012-L3 Series, MDS-G4020 Series, MDS-

G4020-L3 Series, MDS-G4028 Series, MDS-G4028-L3 Series, OnCell G4302-LTE4 Series, PT-508 Series, PT-510 Series, PT-7528 Series, PT-7710 Series, PT-7728 Series, PT-7828 Series, PT-G7728 Series, PT-G7828 Series, SDS3008 Series, SDS-3016 Series, TN-4500A Series, TN-4900 Series, TN-5900 Series, TN-G4500 Series, TN-G6500 Series

Supported Operating Systems

Windows 10, Windows 11, Windows 7, Windows Server 2016, Windows Server 2019

New Features

- Added support for additional devices: AWK-1151C Series, AWK-3252A Series, AWK-4252A Series, On Cell G4302-LTE4 Series, PT-G510 Series.
- Added support for Windows 11.
- Added the Search Configuration function to Preference.

Enhancements

- Added a sorting function to the Analyze Topology function.
- Users can now use the Enter key or click the OK button in the Unlock Devices window.

Bugs Fixed

- If the device has multiple network interfaces, the incorrect network access interface is shown in the Broadcast search.

Changes

N/A

Notes

N/A

Version: v3.1.10	Build: 22092118
Release Date: Nov 23, 2022	

Applicable Products

AWK-3252A Series, EDR-810 Series, EDR-G9010 Series, EDR-G902 Series, EDR-G903 Series, EDS4008 Series, EDS-4009 Series, EDS-4012 Series, EDS-4014 Series, EDS-405A Series, EDS-408A Series, EDS-505A Series, EDS-508A Series, EDS-510A Series, EDS-510E Series, EDS-516A Series, EDS-518A Series, EDS-518E Series, EDS-528E Series, EDS-608 Series, EDS-611 Series, EDS-616 Series, EDS-619 Series, EDS-G4008 Series, EDS-G4012 Series, EDS-G4014 Series, EDS-G508E Series, EDS-G509 Series, EDS-G512E Series, EDS-G516E Series, EDS-P506E Series, EDS-P510 Series, EDS-P510A Series, ICS-G7526A Series, ICS-G7528A Series, ICS-G7748A Series, ICS-G7750A Series, ICS-G7752A Series, ICS-G7826A Series, ICS-G7828A Series, ICS-G7848A Series, ICS-G7850A Series, ICS-G7852A Series, IKS-6726A Series, IKS-6728A Series, IKS-G6524A Series, IKS-G6824A Series, MDS-G4012 Series, MDS-G4012-L3 Series, MDS-G4020 Series, MDS-G4020-L3 Series, MDSG4028 Series, MDS-G4028-L3 Series, PT-508 Series, PT-510 Series, PT-7528 Series, PT-7710 Series, PT-7728 Series, PT-7828 Series, PT-G7728 Series, PT-G7828 Series, SDS-3008 Series, SDS-3016 Series, TN-4500A Series, TN-4900 Series, TN-G4500 Series, TN-G6500 Series

Supported Operating Systems

Windows 10, Windows 7, Windows Server 2016, Windows Server 2019

New Features

- Added support for SNMPv3 with AES-128 encryption.

Enhancements

- Improved the search results display of the “IP Search” and “IP List Search” functions.
- MXconfig can now automatically initialise SNMP agents for switches that use the eCoS system.

Bugs Fixed

- MXconfig may crash when using the “Broadcast Search” function.

Changes

N/A

Notes

N/A

Version: v3.1.8	Build: 22033021
Release Date: May 09, 2022	

Applicable Products

AWK-3252A, EDR-810, EDR-G902, EDR-G903, EDR-G9010, EDR-G9010-HV, EDS-405A/408A, EDS-405A/408AEIP, EDS-405A/408A-PN, EDS-405A-PTP, EDS-505A/508A/516A, EDS-510A, EDS-518A, EDS-510E/518E, EDS-528E, EDS-G508E/G512E/G516E, EDS-G512E-8PoE, EDS-608/611/616/619, EDS-G509, EDS-P510, EDS-P510A-8PoE, EDS-P506A-4PoE, EDS-P506E-4PoE, EDS-4008 Series, EDS-4009 Series, EDS-4012 Series, EDS-4014 Series, EDS-G4008 Series, EDS-G4012 Series, EDSG4014 Series, ICS-G7526/G7528, ICSG7826/G7828, ICSG7748/G7750/G7752, ICSG7848/G7850/G7852, ICS-G7526A/G7528A, ICSG7826A/G7828A, ICSG7748A/G7750A/G7752A, ICSG7848A/G7850A/G7852A, IKS-6726/6728, IKSG6524, IKS-G6824, IKS-6728-8PoE, IKS-6726A/6728A, IKS-G6524A, IKS-G6824A, IKS-6728A-8PoE, MDS-G4012, MDS-G4020, MDS-G4028, MDS-G4012-L3, MDS-G4020-L3, MDS-G4028-L3, PT-G7728, PT-G7828, PT-7528, PT-7710, PT-7728, PT7828/7828-PTP, PT-508/510, SDS-3008, SDS-3016, TN-4516A/4524A/4528A, TN-4900 Series, TN-5916, TNG6512 8PoE/G4516-8PoE

Supported Operating Systems

Windows 10, Windows 7, Windows Server 2016, Windows Server 2019

New Features

- Supports AWK-3252A Series with Login Token function.
- Supports EDS-4000 and EDS-G4000 Series.

Enhancements

N/A

Bugs Fixed

- Users cannot select the country when the AWK-3252A Series is executing the initiation process.
- When executing the Broadcast Search function, MXconfig will crash sometimes.

Changes

N/A

Notes

N/A

Version: v3.1.6	Build: 22010518
Release Date: Jan 06, 2022	

Applicable Products

EDR-810, EDR-G902, EDR-G903, EDR-G9010, EDR-G9010-HV, EDS-405A/408A, EDS-405A/408AEIP, EDS405A/408A-PN, EDS-405A-PTP, EDS-505A/508A/516A, EDS-510A, EDS-518A, EDS510E/518E, EDS528E, EDS-G508E/G512E/G516E, EDS-G512E-8PoE, EDS-608/611/616/619, EDSG509, EDS-P510, EDS-P510A-8PoE, EDS-P506A-4PoE, EDS-P506E-4PoE, ICS-G7526/G7528, ICSG7826/G7828, ICSG7748/G7750/G7752, ICS-G7848/G7850/G7852, ICS-G7526A/G7528A, ICSG7826A/G7828A, ICSG7748A/G7750A/G7752A, ICS-G7848A/G7850A/G7852A, IKS-6726/6728, IKS-G6524, IKS-G6824, IKS-6728-8PoE, IKS-6726A/6728A, IKS-G6524A, IKS-G6824A, IKS-6728A-8PoE, MDS-G4012, MDS-G4020, MDS-G4028, MDS-G4012-L3, MDS-G4020-L3, MDS-G4028-L3, PT-G7728, PT-G7828, PT-7528, PT-7710, PT-7728, PT7828/7828-PTP, PT-508/510, SDS-3008, SDS-3016, TN4516A/4524A/4528A, TN-4908, TN-5916, TN-G6512-8PoE/G4516- 8PoE

Supported Operating Systems

Windows 10, Windows 7, Windows Server 2016, Windows Server 2019

New Features

- Added the product version and build date to the About section.
- Supports limited functions on the AWK-3252A Series (MXconfig baseline excludes Security Wizard and Login Token).
- Supports LM-7000H-2GPFR module on PT-G7728 platform.
- Supports new devices: SDS-3008 Series, SDS-3016 Series.

Enhancements

N/A

Bugs Fixed

- The Time Setting function on the switches did not update.

Changes

N/A

Notes

N/A

Version: v3.1.4	Build: 21111519
Release Date: Nov 19, 2021	

Applicable Products

EDR-810, EDR-G902, EDR-G903, EDR-G9010, EDR-G9010-HV, EDS-405A/408A, EDS-405A/408AEIP, EDS405A/408A-PN, EDS-405A-PTP, EDS-505A/508A/516A, EDS-510A, EDS-518A, EDS510E/518E, EDS528E, EDS-G508E/G512E/G516E, EDS-G512E-8PoE, EDS-608/611/616/619, EDSG509, EDS-P510, EDS-P510A-8PoE, EDS-P506A-4PoE, EDS-P506E-4PoE, ICS-G7526/G7528, ICSG7826/G7828, ICSG7748/G7750/G7752, ICS-G7848/G7850/G7852, ICS-G7526A/G7528A, ICSG7826A/G7828A, ICSG7748A/G7750A/G7752A, ICS-G7848A/G7850A/G7852A, IKS-6726/6728, IKSG6524, IKS-G6824, IKS-6728-8PoE, IKS-6726A/6728A, IKS-G6524A, IKS-G6824A, IKS-6728A-8PoE, MDS-G4012-L3, MDS-G4020-L3, MDS-G4028-L3, PT-G7728, PT-G7828, PT-7528, PT-7710, PT-7728, PT7828/7828-PTP, PT-508/510, TN-4516A/4524A/4528A, TN-4908, TN-5916, TN-G6512-8PoE/G4516- 8PoE, MDS-G4000-10G-cvf

Supported Operating Systems

Windows 10, Windows 7, Windows Server 2016, Windows Server 2019

New Features

- Added support for MXnos v3.0 which includes the Security Wizard function.
- Added support for the SNMP init function. (Can enable SNMP for MXnos and EDR devices. The SNMP Agent is disabled by default.)
- Added support for new devices: EDR-G9010 Series.

Enhancements

- The efficiency of upgrading the EDS-G4000 firmware has been enhanced.

Bugs Fixed

- The SNMP Configuration function in the Preference section was working incorrectly. (Buildcode:
- The Preference folder path of the MXconfig software on the local machine was incorrect which may cause MXconfig to be unstable. (Buildcode: 21111519)

Changes

- For v3.1.4 and later, when you install or uninstall the MXconfig software package, MXconfig will remove the following files to ensure the settings are correct: PREFERENCES_SHARP.properties, SNMP_SETTING_SHARP.properties.

Notes

N/A

Version: v3.1.2	Build: 21062514
Release Date: Jun 30, 2021	

Applicable Products

EDR-810, EDR-G902, EDR-G903, EDR-G9010, EDS-405A/408A, EDS-405A/408A-EIP, EDS405A/408A-PN, EDS-405A-PTP, EDS-505A/508A/516A, EDS-510A, EDS-518A, EDS-510E/518E, EDS528E, EDS G508E/G512E/G516E, EDS-G512E-8PoE, EDS-608/611/616/619, EDS-G509, EDS-P510, EDS-P510A-8PoE, EDS-P506A-4PoE, EDS-P506E-4PoE, ICS-G7526/G7528, ICS-G7826/G7828, ICSG7748/G7750/ G7752, ICS-G7848/G7850/G7852, ICS-G7526A/G7528A, ICS-G7826A/G7828A, ICSG7748A/G7750A/G7752A, ICS-G7848A/G7850A/G7852A, IKS-6726/6728, IKS-G6524, IKS-G6824, IKS-6728-8PoE, IKS-6726A/6728A, IKS-G6524A, IKS-G6824A, IKS-6728A-8PoE, MDS-G4012-L3, MDS-G4020-L3, MDS-G4028-L3 Series, PT-G7728, PT-G7828, PT-7528, PT-7710, PT-7728, PT7828/7828-PTP, PT-508/510, TN-4516A/4524A/4528A, TN-4908, TN-5916, TN-G6512-8PoE/G4516- 8PoE, MDS-G4000-10G-cvf

Supported Operating Systems

Windows 10, Windows 7, Windows Server 2016, Windows Server 2019

New Features

- Supports CLI for MXnos switches.
- Supports the device locator function for MXnos switches.
- The password for MXnos switches can now be changed.

Enhancements

N/A

Bugs Fixed

N/A

Changes

- Support new devices: EDR-G9010 Series, TN-4908 Series, MDS-G4012-L3 Series, MDS-G4020-L3 Series, MDS-G4028-L3 Series

Notes

N/A

Version: v3.1	Build: 21042814
Release Date: Apr 30, 2021	

Applicable Products

EDR-810, EDR-G902, EDR-G903, EDS-405A/408A, EDS-405A/408A-EIP, EDS-405A/408A-PN, EDS405A-PTP, EDS-505A/508A/516A, EDS-510A, EDS-518A, EDS-510E/518E, EDS-528E, EDSG508E/G512E/G516E, EDS-G512E-8PoE, EDS-608/611/616/619, EDS-G509, EDS-P510, EDS P510A8PoE, EDS-P506A-4PoE, EDS-P506E-4PoE, ICS-G7526/G7528, ICS-G7826/G7828, ICSG7748/G7750/G7752, ICS-G7848/G7850/G7852, ICS-G7526A/G7528A, ICS-G7826A/G7828A, ICSG7748A/G7750A/G7752A, ICS-G7848A/G7850A/G7852A, IKS-6726/6728, IKS-G6524, IKS-G6824, IKS-6728-8PoE, IKS-6726A/6728A, IKS-G6524A, IKS-G6824A, IKS-6728A-8PoE, MDS-G4000, PTG7728, PT-G7828, PT-7528, PT-7710, PT-7728, PT-7828/7828-PTP, PT-508/510, TN4516A/4524A/4528A, TN 5916, TN-G6512-8PoE/G4516-8PoE

Supported Operating Systems

Windows 10, Windows 7, Windows Server 2016, Windows Server 2019

New Features

A Java license is no longer required.

Enhancements

N/A

Bugs Fixed

N/A

Changes

The following devices are now supported: TN-4516A/4524A/4528A, TN-G6512-8PoE/G4516-8PoE, MDS-G4000-10G-cvf.

Notes

N/A

Version: v3.0	Build: 20122819
Release Date: Jan 01, 2021	

Applicable Products

EDR-810, EDR-G902, EDR-G903, EDS-405A/408A, EDS-405A/408A-EIP, EDS-405A/408A-PN, EDS405A-PTP, EDS-505A/508A/516A, EDS-510A, EDS-518A, EDS-510E/518E, EDS-528E, EDSG508E/G512E/G516E, EDS-G512E-8PoE, EDS-608/611/616/619, EDS-G509, EDS-P510, EDS P510A8PoE, EDS-P506A-4PoE, EDS-P506E-4PoE, ICS-G7526/G7528, ICS-G7826/G7828, ICSG7748/G7750/G7752, ICS-G7848/G7850/G7852, ICS-G7526A/G7528A, ICS-G7826A/G7828A, ICSG7748A/G7750A/G7752A, ICS-G7848A/G7850A/G7852A, IKS-6726/6728, IKS-G6524, IKS-G6824, IKS-6728-8PoE, IKS-6726A/6728A, IKS-G6524A, IKS-G6824A, IKS-6728A-8PoE, PT-G7728, PTG7828, PT-7528, PT-7710, PT-7728, PT-7828/7828-PTP, PT-508/510, TN-5916, MDS-G4000

Supported Operating Systems

Windows 10, Windows 7, Windows Server 2016, Windows Server 2019

New Features

- A Java license is no longer required.

Enhancements

N/A

Bugs Fixed

N/A

Changes

Only the following features are included:

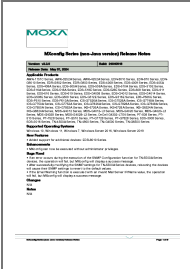
- **Device Search:** Broadcast Search, Specific IP Search, IP List Search
- **System File Update:** Upgrade Firmware, Export Configuration, Import Configuration, Copy Configuration
- Network Settings, Password Settings, Device Locator, Device Console, Telnet Console, Connectivity Test, Unlock Device, Security Wizard, Execute CLI, Reboot, Factory Default
- **Multiple Setting:** Accessible IP, Account Lockout, Auth Server Settings, Auto Logout, Broadcast Storm Protection, Configuration Encryption, Day Light Saving, GVRP, IGMP Snooping, Industrial Protocol, LLDP Setting, Line Swap Fast Recovery, Management Interface, NTP, Password, Password Policy, SNMP Configuration, Syslog, System Notification, Telnet Console Setting, Time, Trap Configuration
- **Preference:** SNMP Configuration, Management Interface
- Link Sequence Detection

Notes

N/A



Documents / Resources

	<p>MOXA MXconfig Series Configuration Software Tool [pdf] Owner's Manual MXconfig Series Configuration Software Tool, MXconfig Series, Configuration Software Tool, Software Tool, Tool</p>
---	---

References

- [User Manual](#)

[Manuals+](#), [Privacy Policy](#)

This website is an independent publication and is neither affiliated with nor endorsed by any of the trademark owners. The "Bluetooth®" word mark and logos are registered trademarks owned by Bluetooth SIG, Inc. The "Wi-Fi®" word mark and logos are registered trademarks owned by the Wi-Fi Alliance. Any use of these marks on this website does not imply any affiliation with or endorsement.