

[Skip to content](#)

## **Manuals+**

User Manuals Simplified.



# **moulinex LM42X Powelix Super Fast Blender Instructions**

[Home](#) » [moulinex](#) » moulinex LM42X Powelix Super  
Fast Blender Instructions

**moulinex LM42X Powelix Super Fast Blender  
Instructions**



Read safety instructions and booklet carefully before using for the first time.  
These instructions only apply to the XL Chopper

**Contents** [hide](#)

[1 Maintenance](#)

[2 What's in the box](#)

[3 Installation](#)

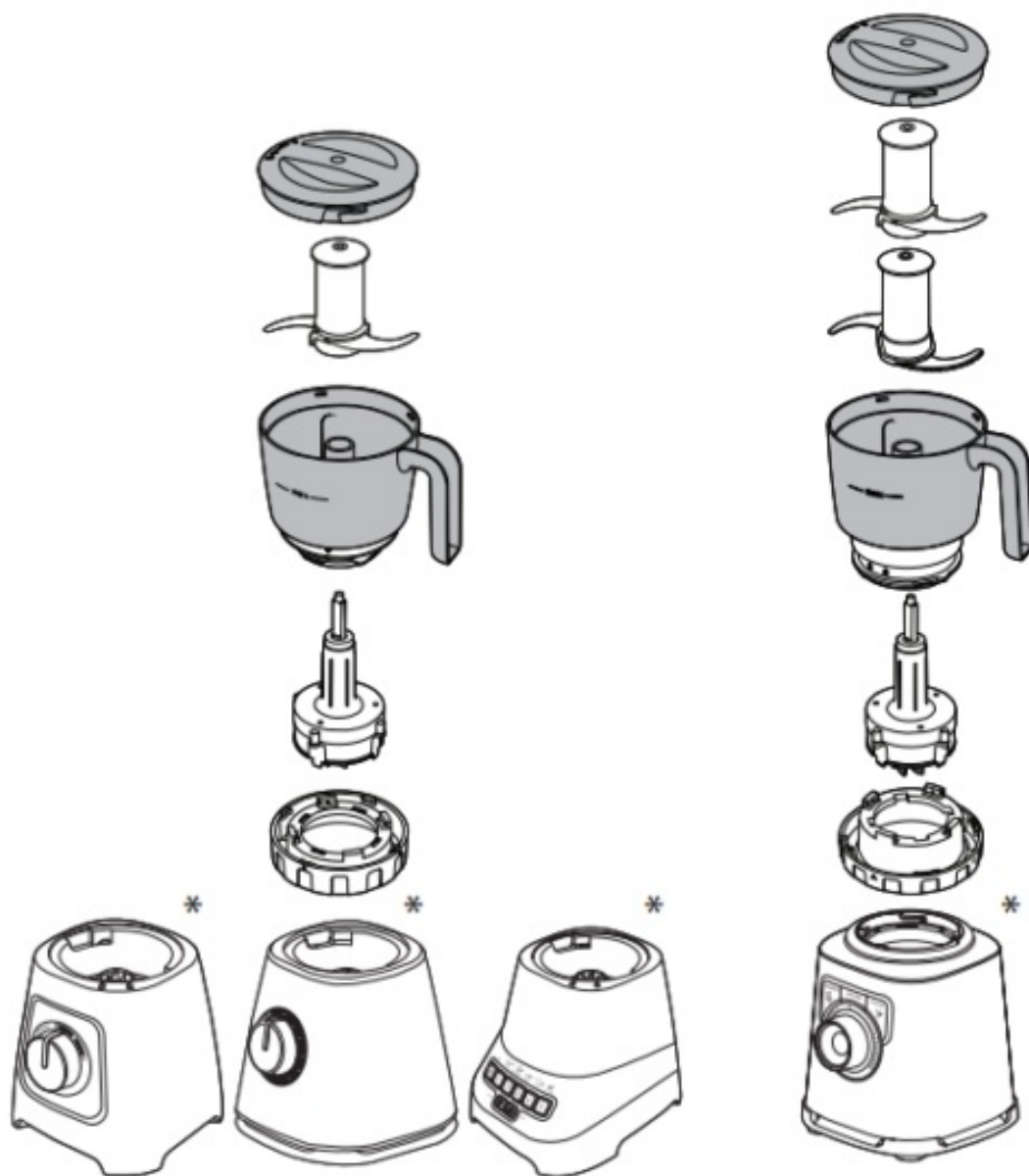
[4 Safety instructions](#)

[5 USAGE](#)

[6 Documents / Resources](#)

[7 Related Posts](#)

## **Maintenance**

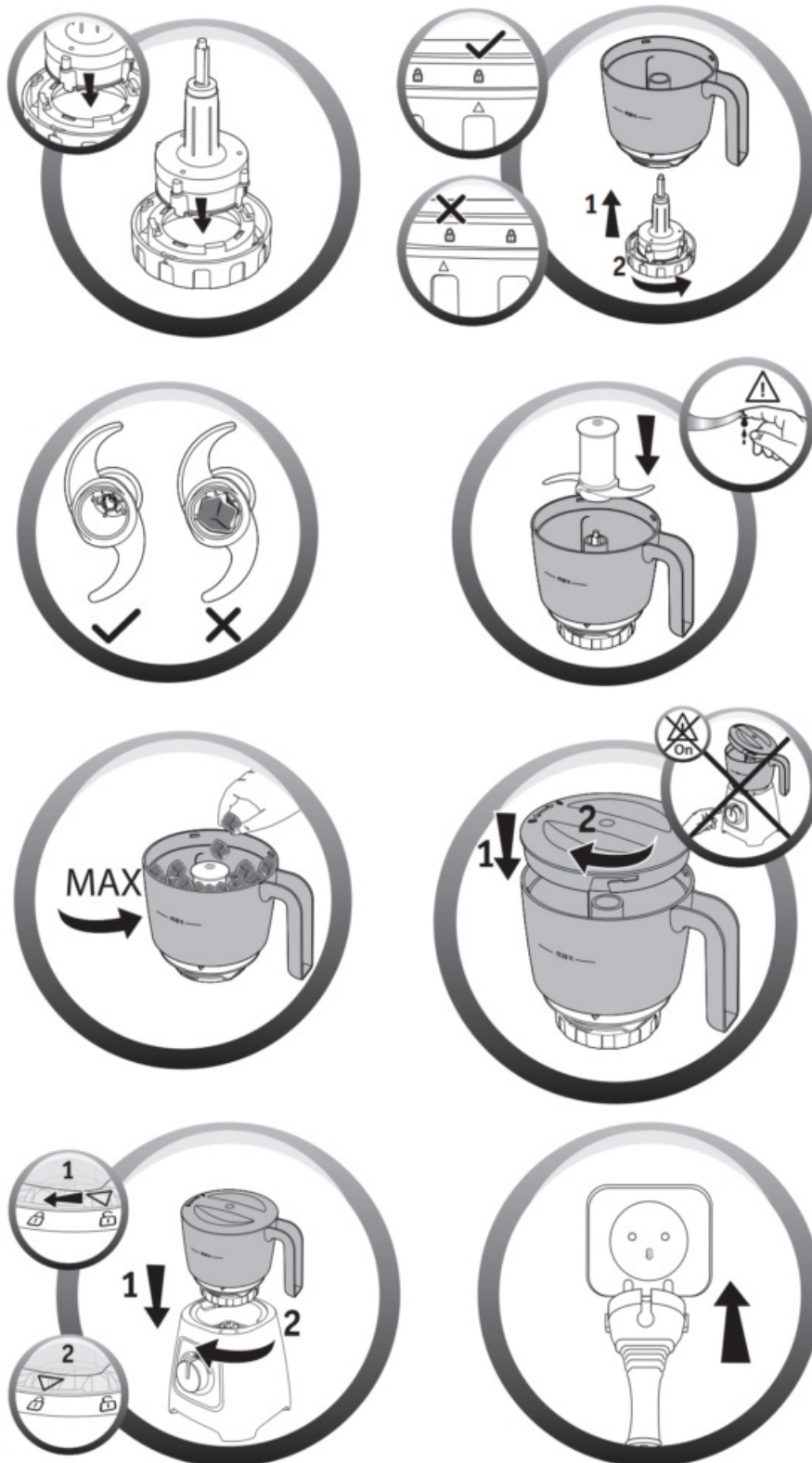


Depending on model

What's in the box

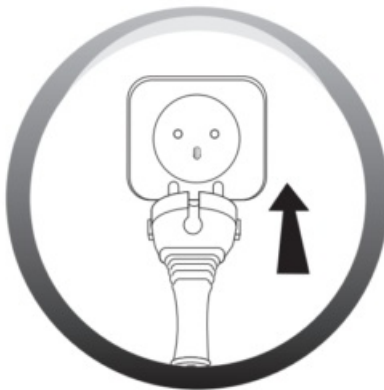
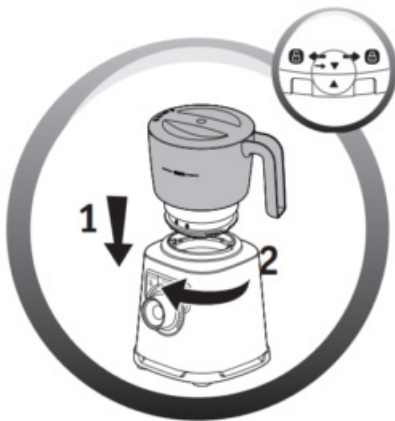
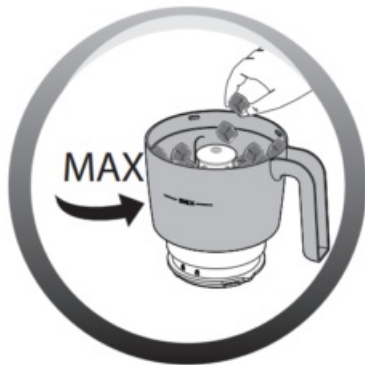
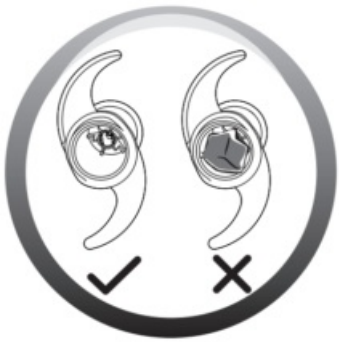



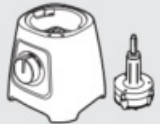
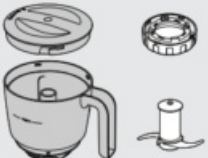
Installation



## Safety instructions





			
	✗	✗	✓
	✓	✓	✓



## USAGE

		0,5L		
		20g	12s	<i>pulse</i>
	8	200g	x7	<i>pulse</i>
		150g	5s	<i>pulse</i>
	4	50g	30s	MAX/5*
		200g	20s	MAX/5*
		150g	40s	MAX/5*
	2	300g	15s	MAX/5*
		300g	15s	MAX/5*
		300g	30s	<i>pulse</i>
		300g	30s	<i>pulse</i>
	*  2 x 2,5 x 4cm	x8 MAX	12s	<i>pulse</i>



\*



If your appliance does not work, check it is properly connected to the mains and the power cord is in good condition. Your appliance still does not work? Contact an approved service centre (see the service booklet).

## Documents / Resources



[moulinex LM42X Powelix Super Fast Blender](#) [pdf] Instructions  
LM42X, LM42X127, Powelix Super Fast Blender

[Manuals+](#),

- [home](#)
- [privacy](#)