

MOTOROLA SOLUTIONS MXP7000 Tetra and LTE Android Portable Device



MOTOROLA SOLUTIONS MXP7000 Tetra and LTE Android Portable Device Installation Guide

[Home](#) » [Motorola Solutions](#) » MOTOROLA SOLUTIONS MXP7000 Tetra and LTE Android Portable Device Installation Guide 

Contents

- [1 MOTOROLA SOLUTIONS MXP7000 Tetra and LTE Android Portable Device](#)
- [2 Specifications](#)
- [3 Product Usage Instructions](#)
- [4 Knowing Your Radio](#)
- [5 Getting Started](#)
- [6 Indication](#)
- [7 FAQ](#)
- [8 Documents / Resources](#)
 - [8.1 References](#)



MOTOROLA SOLUTIONS MXP7000 Tetra and LTE Android Portable Device



Specifications

- Submersible with battery and antenna attached (IP67 standard compliant)
- Front Camera, Rear Camera with Flash
- Front Microphone, Rear Microphone
- Touch Screen Display, LTE/Device Status LED, TETRA Status LED
- Power Button, Push-To-Talk Button, Emergency Button
- USB-C Connector, GCAI-Mini Connector
- Lithium-Ion Battery

Product Usage Instructions

Attaching the Antenna

1. Insert the threaded base of the antenna into the antenna terminal on top of your radio.
2. Turn the antenna clockwise until it is tight.

Installing the Battery

1. Insert the battery into the compartment until the contacts align and the battery hooks in place.
2. Speak into the top microphone and listen through the speaker.

Removing the Battery

1. Slide the Battery Latch to the right and hold it until you can lift the battery out.
2. Lift the battery from the top and pull it upwards to disengage it from the hooks.
3. Remove the battery from the compartment.

Inserting MicroSD and SIM Cards

1. Remove the battery.
2. Flip open the MicroSD/TETRA SIM/LTE SIM card door using the finger scoop area.
3. Slide the cardholder and insert the card with gold contacts facing down.

Turning the Radio On/Off

1. To turn it on, press and hold the Power button for 3 seconds.
2. To turn it off, press and hold the Power button until the power menu appears, then tap the Power off button.

Knowing Your Radio



1. Antenna
2. LTE/Device Status LED
3. TETRA Status LED
4. Front Camera
5. Front Microphone
6. Ambient Light Sensor (ALS)
7. Earpiece Speaker
8. Touch Screen Display
9. Front Speaker and Microphone
10. Rotary Knob
11. Emergency Button
12. Rear Microphone Rear Camera with Flash
13. Battery Latch
14. Lithium-Ion Battery
15. Lanyard Hole



16. Power Button and Screen Lock/Unlock
17. GCAI-Mini Connector
18. Push-To-Talk Button (PTT)
19. One Touch Button 1
20. One Touch Button 2
21. USB-C Connector
22. Charging Contacts

Getting Started

Looking After Your Radio

- Never leave your radio or battery in extreme temperatures (over +85°C). For example, behind a windscreen in

direct sunlight.

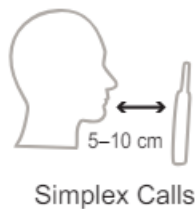
- The radio is submersible (compliant with the IP67 standard), but only with the battery and antenna attached.
- To clean your radio, use a moistened or antistatic cloth. Ensure that no contamination is on the gore port membrane which is the area labelled as VENT on the back of the radio chassis.

Optimal Audio Performance

The radio has three microphones:

- A top front microphone for Simplex group, dispatcher, or private calls.
- A top back microphone for optional noise cancellation.
- A bottom microphone for Duplex, telephone-like calls.

1. When using high audio, hold your radio vertically with the top microphone 5–10 cm away from your mouth.
2. Speak into the top microphone.
3. Listen through the speaker.



1. When using low audio, hold your radio as you would a telephone.
2. Speak into the bottom microphone.
3. Listen through the earpiece.

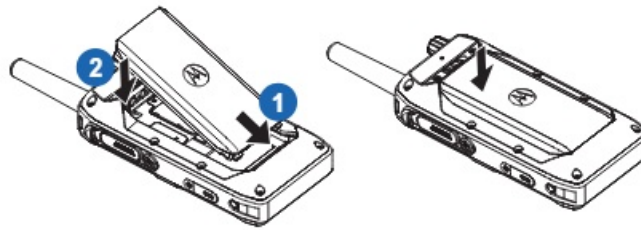


Attaching the Antenna

1. Insert the threaded base of the antenna into the antenna terminal on top of your radio.
2. Turn the antenna clockwise until it is tight.

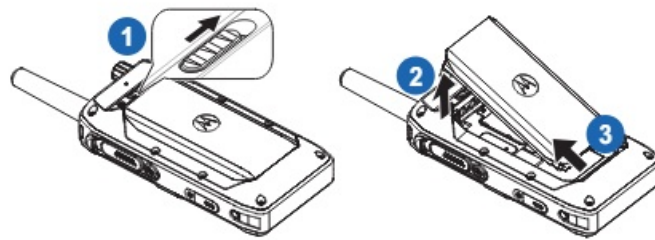


Installing the Battery



1. Insert the battery into the compartment until the contacts align and the battery hooks in place.
2. Press down on the battery until it clicks in place.

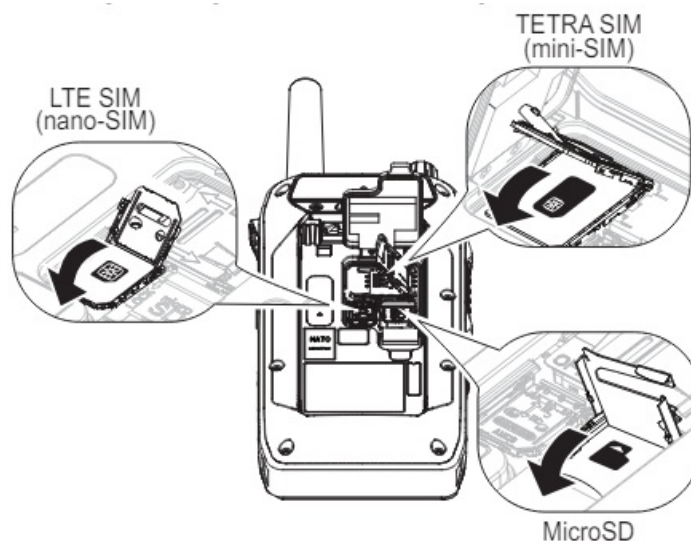
Removing the Battery



1. Slide the Battery Latch to the right and hold it until you can lift the battery out.
2. Lift the battery from the top and pull the battery upwards to disengage it from the battery hooks.
3. Remove the battery from the compartment.

Inserting the MicroSD and SIM Cards

1. Remove the battery.
2. Flip open the MicroSD/TETRA SIM/LTE SIM card door using the finger scoop area.
3. Slide the MicroSD/TETRA SIM/LTE SIM card holder then flip it open.
4. Insert the MicroSD/TETRA SIM/LTE SIM card into the card holder ensuring that the gold contact area is facing down.



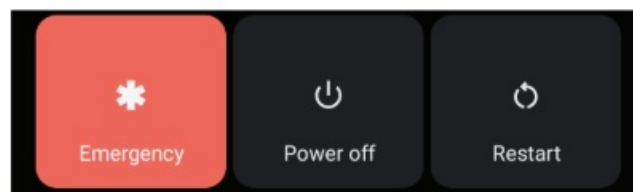
5. Close the MicroSD/TETRA SIM/LTE SIM card holder and slide it into the lock position.
6. Close the MicroSD/TETRA SIM/LTE SIM door.
7. Install the battery.

Turning the Radio On

- Press and hold the Power button for 3 seconds to turn on the radio.


Turning the Radio Off

- Press and hold the Power button until the Power Menu appears.
- Tap the Power off button to turn off the radio.



Indication

Transmit and Receive Indicator

Call State	Lightbar Color	Lightbar Indicator	
		Group Call	Broadcast Call
Available or Idle	Gray or light blue		
Receiving	Amber		
Receiving hangtime	Amber		
Transmitting	Green		Not applicable
Transmitting hangtime	Green		Not applicable

Indication	LTE/Device LED	TETRA LED
Solid green	Battery is fully charged when connected to USB/MUC/SUC	<ul style="list-style-type: none"> In use Repeating call
Blinking green	Battery is > 90%	<ul style="list-style-type: none"> TMO Service Idle Switching modes TMO to DMO
Solid red	Battery is charging	Out of service
Blinking red	Not applicable	<ul style="list-style-type: none"> Connecting to a network Switching modes from DMO to TMO
Slow blinking red	Battery is very low (<15%)	Not applicable
Fast blinking red	<ul style="list-style-type: none"> Charging error Too high or too low battery charging temp Invalid battery 	Not applicable
Solid orange	Not applicable	<ul style="list-style-type: none"> Radio is powering on Transmit inhibit mode in service Channel busy in DMO Radio interference in DMO
Blinking orange	Not applicable	Incoming private
Blinking blue	<ul style="list-style-type: none"> New app notification New SMS/MMS New email Missed call 	Not applicable
No indication	<ul style="list-style-type: none"> Radio not charging No new notification Radio powered off 	Radio powered off

- **More Information on the Radio**

Visit the Motorola Solutions Web site at: <http://www.motorolasolutions.com/>

- **Learning Experience Portal**

User documentation is available at: <https://learning.motorolasolutions.com/>

- **Open Source Software Legal Notices**

Available in Integrated Terminal Management (ITM)

This document is copyright-protected. Duplications for the use of Motorola Solutions products are permitted to an appropriate extent. Duplications for other purposes, changes, additions or other processing of this document are not permitted. Only this electronically-saved document is considered to be the original. Duplications are considered merely copies. Motorola Solutions, Inc., and its subsidiaries and affiliates do not vouch for the correctness of such kinds of copies.

MOTOROLA, MOTO, MOTOROLA SOLUTIONS and the Stylized M Logo are trademarks or registered trademarks of Motorola Trademark Holdings, LLC and are used under license. The Bluetooth® word mark and logos are registered trademarks owned by the Bluetooth SIG, Inc. and are used under license. All other trademarks are the property of their respective owners.

© 2023 Motorola Solutions, Inc. All rights reserved.

www.motorolasolutions.com

FAQ

- **Q: Is the radio submersible?**

- A: Yes, it is submersible with the battery and antenna attached, compliant with IP67 standards.

- **Q: How do I clean the radio?**

- A: Use a moistened or antistatic cloth to clean the radio.

- **Q: How do I ensure optimal audio performance?**

- A: Hold the radio properly for low audio and speak into the correct microphone for simplex and duplex calls.

Documents / Resources

	MOTOROLA SOLUTIONS MXP7000 Tetra and LTE Android Portable Device [pdf] Installation Guide MXP7000 Tetra and LTE Android Portable Device, MXP7000, Tetra and LTE Android Portable Device, Android Portable Device, Portable Device, Device
---	--

References

- [Anatel — Agência Nacional de Telecomunicações](#)
- [User Manual](#)

[Manuals+](#), [Privacy Policy](#)

This website is an independent publication and is neither affiliated with nor endorsed by any of the trademark owners. The "Bluetooth®" word mark and logos are registered trademarks owned by Bluetooth SIG, Inc. The "Wi-Fi®" word mark and logos are registered trademarks owned by the Wi-Fi Alliance. Any use of these marks on this website does not imply any affiliation with or endorsement.