



Motorola Solutions MXM7000  
INTL Mobile Solution



# Motorola Solutions MXM7000 INTL Mobile Solution User Guide

[Home](#) » [Motorola Solutions](#) » **Motorola Solutions MXM7000 INTL Mobile Solution User Guide** 

## Contents

- [1 Motorola Solutions MXM7000 INTL Mobile Solution](#)
- [2 Specifications](#)
- [3 Getting Started](#)
- [4 Attaching the Antenna](#)
- [5 Inserting Cards](#)
- [6 Turning On/Off](#)
- [7 Inserting TETRA SIM Card:](#)
- [8 FAQs](#)
- [9 Documents / Resources](#)
  - [9.1 References](#)



**Motorola Solutions MXM7000 INTL Mobile Solution**



## Specifications

- IP Rating: IP54
- Connectors: RJ45, USB-A, Micro SD Card Slot, LTE SIM Card Slot, GCAI MMP Dust Cover, RJ50, 12 V Power Connector, Trunnion Mounting Point, TETRA UHF Connector C, 26-Pin Accessory Connector, RS232 (9 SubD)
- Display: TouchScreen
- Buttons: Power Button, Emergency Button, Programmable Buttons, Rotary Knob

## Getting Started

1. Clean the radio with a moistened or antistatic cloth.
2. Ensure the VENT membrane on the control head is clean.

## Attaching the Antenna

1. Connect the LTE Main, LTE DIV, and GNSS cables to the control head.
2. Connect the TETRA cable to LPF connector A or B and then to the transceiver TETRA UHF Connector C.
3. Secure all connections by locking the cables.

## Inserting Cards

1. Insert an LTE SIM or microSD card into the respective slots with gold contacts facing downwards.
2. Close the card holder door securely.

## Turning On/Off

### To Turn On:

- Press and hold the Power button for three seconds.

### To Turn Off:

- Press and hold the Power button and tap the Power off icon.

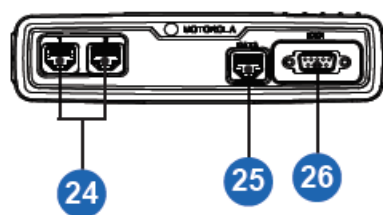
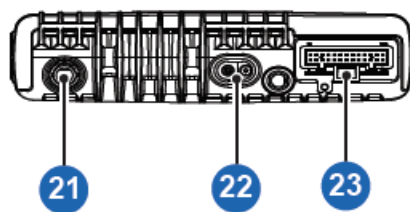
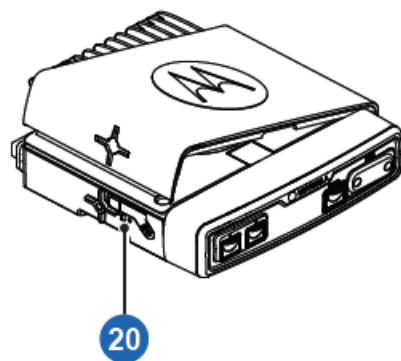
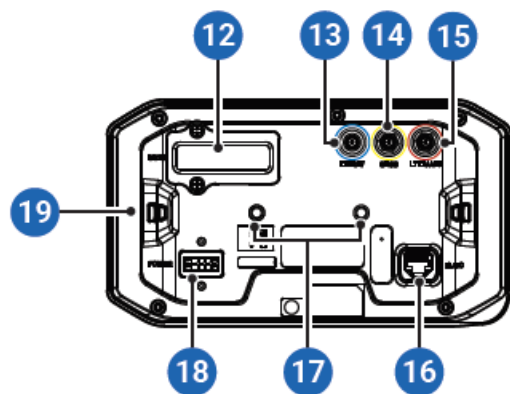
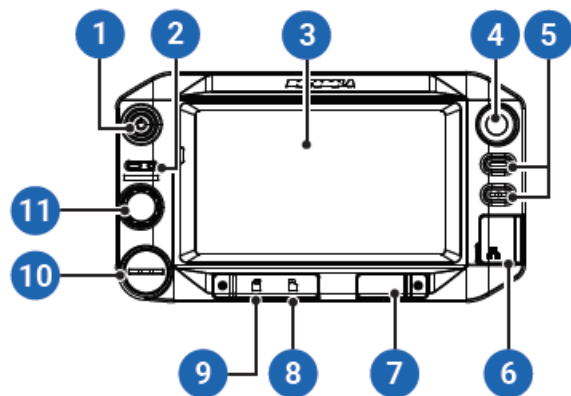
### **Inserting TETRA SIM Card:**

1. Open the TETRA SIM card holder door on the transceiver.
2. Insert the TETRA SIM card with gold contacts facing downwards.
3. Close the TETRA SIM card holder door securely.

### **More Information:**

- [Motorola Solutions Website](#)
- [User Documentation Portal](#)

1. Power Button and Screen Lock/Unlock
2. TETRA and LTE LEDS
3. TouchScreen Display
4. Emergency Button
5. Programmable Buttons
6. RJ45 Connector
7. USB-A Port
8. Micro SD Card Slot
9. LTE SIM Card Slot
10. GCAI MMP Dust Cover
11. Rotary Knob
12. Dust Cover
13. LTE Div
14. GNSS
15. LTE Main
16. RJ50 Connector
17. RAM Ball Mounting
18. 12 V Power Connector
19. Trunnion Mounting Point
20. Internal TETRA SIM Card Slot
21. TETRA UHF Connector C
22. 12 V Power Connector
23. 26-Pin Accessory Connector
24. RJ50 Connector (for Control Head)
25. RJ50 Connector (for External TETRA SIM Reader)
26. RS232 (9 SubD)

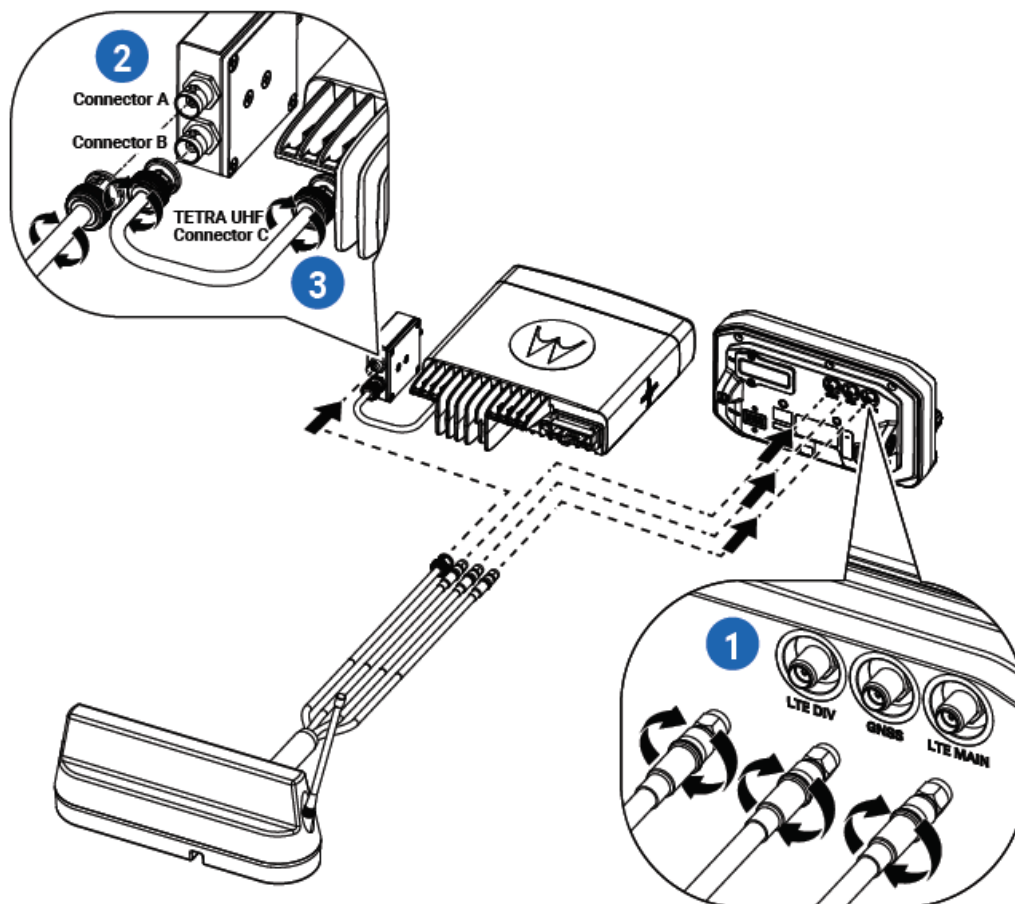


## Looking After Your Radio

- Never leave your control head in extreme temperatures (over +85 °C), such as behind a windscreen in direct sunlight.
- The control head is protected against dust and water sprays (compliant with the IP54 rating).
- To clean your radio, use a moistened or antistatic cloth.
- Ensure the gore port membrane on the back of the control head, labeled VENT, is kept clean.

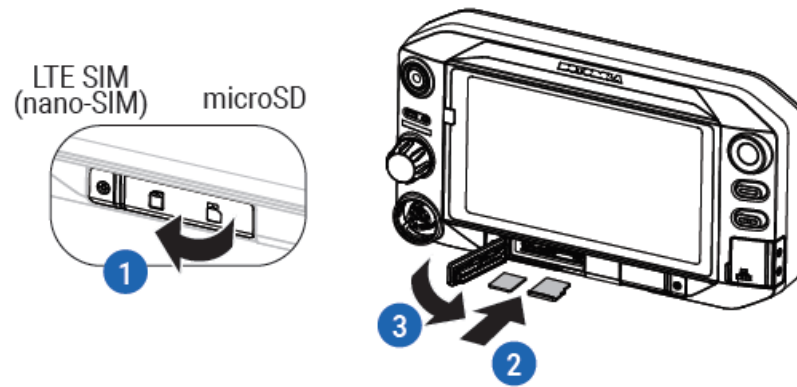
## Attaching the Antenna

1. Connect the LTE Main, LTE DIV, and GNSS cables of the external antenna to the control head. Turn the connector sleeve on each cable to lock the cables to the control head.
2. Connect the TETRA cable of the external antenna to the Low Pass Filter (LPF) connector A or B.
3. Connect a coaxial cable from LPF connector A or B to the transceiver TETRA UHF Connector C.
4. Turn the connector head of the cable to lock the cable to the LPF



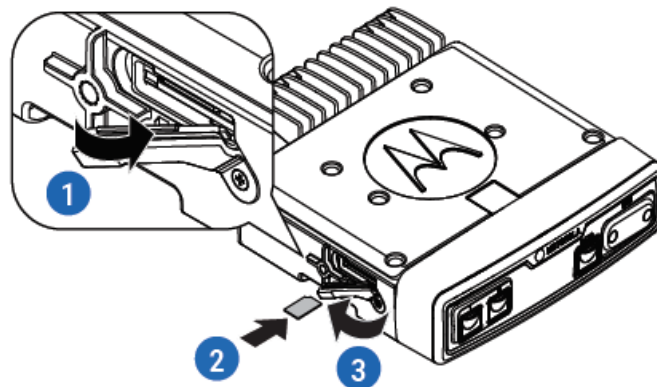
## Inserting the LTE SIM and MicroSD Cards

1. Open the card holder door on the control head.
2. Insert the LTE SIM or microSD card into the correct slot. Ensure that the gold contact area is facing downwards.
3. Close the card holder door.



### Inserting the TETRA SIM card

1. Open the TETRA SIM card holder door on the transceiver.
2. Insert the TETRA SIM card into the card slot. Ensure that the gold contact area is facing downwards.
3. Close the TETRA SIM card holder door.

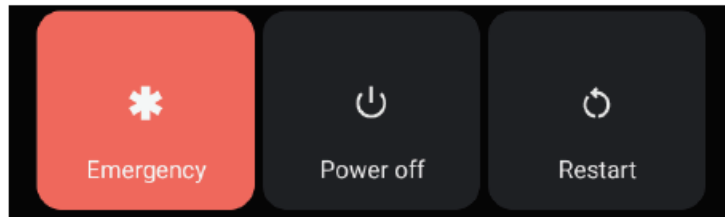


### Turning Your Radio On

1. Press and hold the Power button for three seconds to turn on your radio.

### Turning Your Radio Off

1. Press and hold the Power button.
2. Tap the Power off icon to turn off your radio.



## TETRA Transmit and Receive Indicator

### TETRA Transmit and Receive Indicator

Call State	Lightbar Color	Lightbar Indicator	
		Group Call	Broadcast Call
Available or Idle	Gray or light blue	◀ H DMO Folder DM01	◀ H DMO Folder DM01
Receiving	Amber	◀ H DMO Folder DM01 905	L ◀ <b>Broadcast</b> Emergency Call 905
Receiving hangtime	Amber	◀ H DMO Folder DM01	L ◀ <b>Broadcast</b> Emergency Call
Transmitting	Green	◀ H DMO Folder DM01 Talking	Not applicable
Transmitting hangtime	Green	◀ H DMO Folder DM01	Not applicable

## LTE LED and TETRA LED Status Indication

Indication	LTE LED	TETRA LED
Solid green	Not applicable	In use Repeating call
Blinking green	Not applicable	TMO service idle Switching modes TMO to DMO
Solid red	Not applicable	Out of service
Blinking red	Not applicable	Connecting to a network Switching modes from DMO to TMO
Solid orange	Not applicable	Radio is turning on Transmit inhibit mode in service Channel busy in DMO Radio interference in DMO
Blinking orange	Not applicable	Incoming private
Blinking blue	New app notification New SMS/MS New email Missed call	Not applicable
No indication	No new notification. The radio was powered off.	The radio is turned off

### More Information on Your Radio

- Visit the Motorola Solutions website at:
  - <https://www.motorolasolutions.com/>
- Learning Experience Portal
- User documentation available at:
  - <https://learning.motorolasolutions.com/>
- Open Source Software Legal Notices
- Available in Integrated Terminal Management (iTM)
- [www.motorolasolutions.com](https://www.motorolasolutions.com)

### Motorola solution

- This document is copyright protected. Duplications for the use of Motorola Solutions products are permitted to an appropriate extent. Duplications for other purposes, changes, additions, or other processing of this document are not permitted. Only this electronically saved document is considered to be the original. Duplications are considered merely copies. Motorola Solutions, Inc. and its subsidiaries and affiliates do not vouch for the correctness of such kinds of copies.
- MOTOROLA, MOTO, MOTOROLA SOLUTIONS, and the Stylized M Logo are trademarks or registered



trademarks of Motorola Trademark Holdings, LLC and are used under license. The Bluetooth® word mark and logos are registered trademarks owned by the

- Bluetooth SIG, Inc. and are used under license. All other trademarks are the property of their respective owners.
- © 2024 Motorola Solutions, Inc. All rights reserved.

## FAQs

**Q: What do the different lightbar colors and indicators signify?**

**A:**


- Group Call: Gray or light blue
- Broadcast Call: Amber
- Receiving: Amber
- Transmitting: Green
- LTE LED Status: Solid green (Connected), Blinking green (Connecting), Solid red (Error), Blinking red (Disconnecting), Solid orange (Standby), Blinking orange (Data Transfer), Blinking blue (Activity)

## Documents / Resources



[Motorola Solutions MXM7000 INTL Mobile Solution](#) [pdf] User Guide  
MXM7000 INTL Mobile Solution, MXM7000, INTL Mobile Solution, Mobile Solution, Solution

## References

-  [Anatel — Agência Nacional de Telecomunicações](#)
- [User Manual](#)

[Manuals+](#), [Privacy Policy](#)

This website is an independent publication and is neither affiliated with nor endorsed by any of the trademark owners. The "Bluetooth®" word mark and logos are registered trademarks owned by Bluetooth SIG, Inc. The "Wi-Fi®" word mark and logos are registered trademarks owned by the Wi-Fi Alliance. Any use of these marks on this website does not imply any affiliation with or endorsement.