

Motic Swift BTX5-8 Detachable Tablet for Trinocular Microscopes



Motic Swift BTX5-8 Detachable Tablet for Trinocular Microscopes User Manual

[Home](#) » [Motic Swift](#) » Motic Swift BTX5-8 Detachable Tablet for Trinocular Microscopes User Manual 

Contents

- [1 Motic Swift BTX5-8 Detachable Tablet for Trinocular Microscopes](#)
- [2 Product Information](#)
- [3 Product Usage Instructions](#)
- [4 Introduction](#)
- [5 Camera Registration](#)
- [6 Linking the MotiCam X5 to a network \(Wired using RJ-45\)](#)
- [7 MOTICAM X5 Information:](#)
- [8 Documents / Resources](#)
 - [8.1 References](#)
- [9 Related Posts](#)



Motic Swift BTX5-8 Detachable Tablet for Trinocular Microscopes



Product Information

Specifications

- Product Name: D-Moticam BTI
- Type: Microscope Tablet / Camera
- Compatible Devices: Android or iOS tablets with a screen size not smaller than 7 inches
- Camera Modes: 2.4GHz and 5GHz
- Password for Default Network: 12345678

Product Usage Instructions

Camera Registration

Make sure to register your device on the Motic Images website using the SSID signal provided on the camera label.

MotiConnect Quick Start

1. Click on MotiConnect App Icon on the main tablet screen.
2. In the app, click on Camera Device, then choose Motic WiFi Camera to view the live image.

Using WiFi Devices

For optimal performance, use tablets with a screen size not smaller than 7 inches. The camera can operate in 2.4GHz mode on Channel 1 or 6. To switch to 5GHz mode, change the Channel to 149 or 157.

Calibration

1. Ensure you have the calibration slide with four dark round circles corresponding to each objective on your microscope.
2. Click on Create Calibration and follow the software prompts to capture and save calibration parameters.
3. When changing the objective magnification, ensure to select the same magnification number in the software without recalibrating.

FAQ

- **How do I access my Moticam X5 from different devices?**

To access your Moticam X5 from any device connected to the network, find the IP address assigned to your camera on your router's settings. You can enter this IP address in a browser or use compatible software like Motic Images Plus 3.0 or MotiConnect.

- **What should I do if my camera disconnects from 2.4GHz devices when switching to 5GHz mode?**

If your camera disconnects from 2.4GHz devices after switching to 5GHz mode, locate the camera on your available WiFi devices using the new SSID and Password provided. Ensure to follow the setup instructions for your specific router brand.

D-Moticam BTI

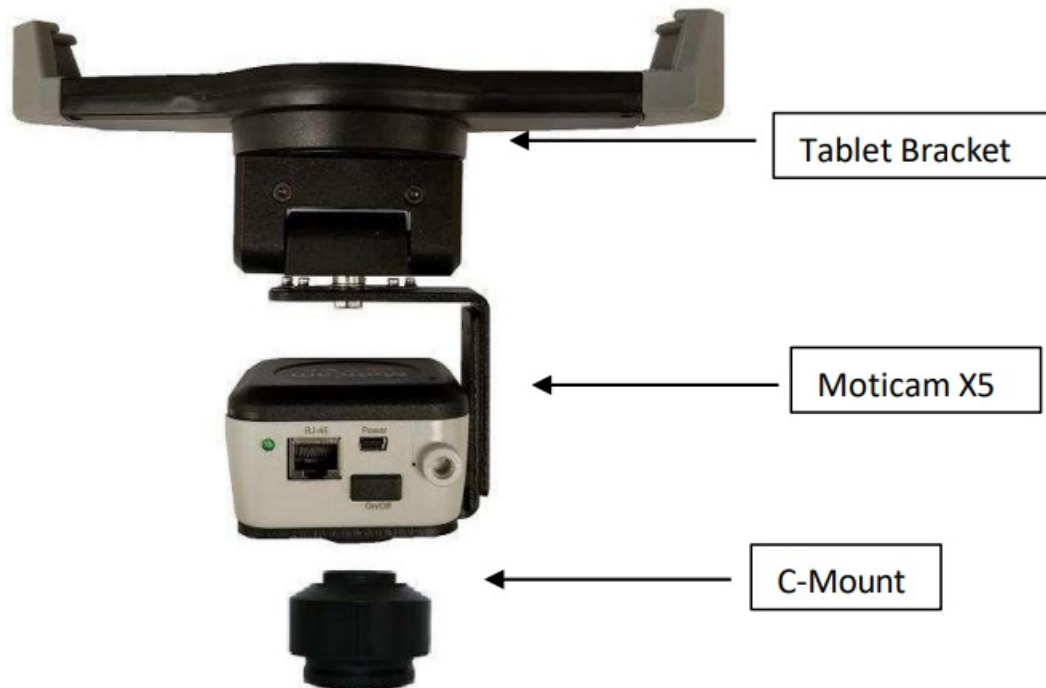
Microscope Tablet / Camera
Use and Care Manual

Introduction

Thank you for purchasing the D-Moticam BTX5-8 / BTX5-10/BTI8/BTI10 Tablet-Camera system. The BTI provides an effective method of attaching a camera system to any c-mount trinocular microscope using a 0.5x c-mount adapter. The image from the microscope can be viewed on the provided tablet or via WiFi to any WiFi enabled device.

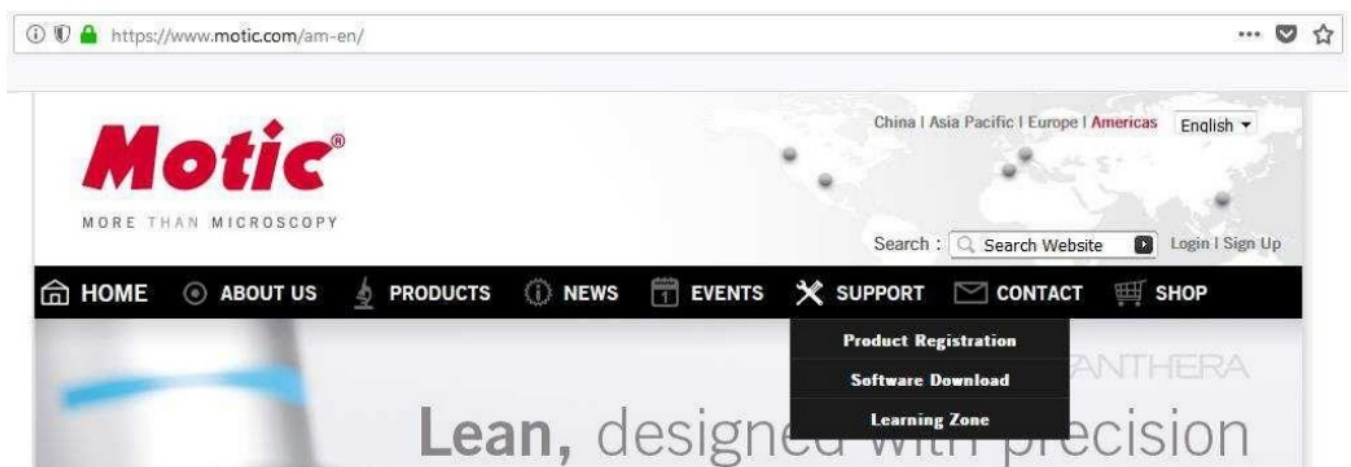
The camera portion of the BTI houses a WiFi transmission antenna. WiFi allows any WiFi enabled device to view, measure and annotate the microscope image through the available MotiConnect application. The MotiConnect app can be downloaded through Google's PlayStore or Apple's AppStore.

Tablet Bracket Quick Assembly



Camera Registration

It is important to make sure you have registered your device on the Motic Images website:



Connect to the Moticam X5 WiFi signal – Quick Start

1. First plug the power supply.
2. You will notice a Blue LED start to blink. During this time, the Moticam X5 will establish a WiFi network.
3. The Moticam X5 camera can support up to 5ea devices at one time.
4. Once the camera establishes its network, you will see the camera on WiFi list of available devices.
5. By default the Moticam X5 operates at 2.4 GHz. Instructions for switching it to 5 GHz can be found further below.
6. The Moticam X5's SSID signal is printed on a label on the camera. To log onto your camera, simply connect your included tablet to that signal. The password for the network by default is 12345678.

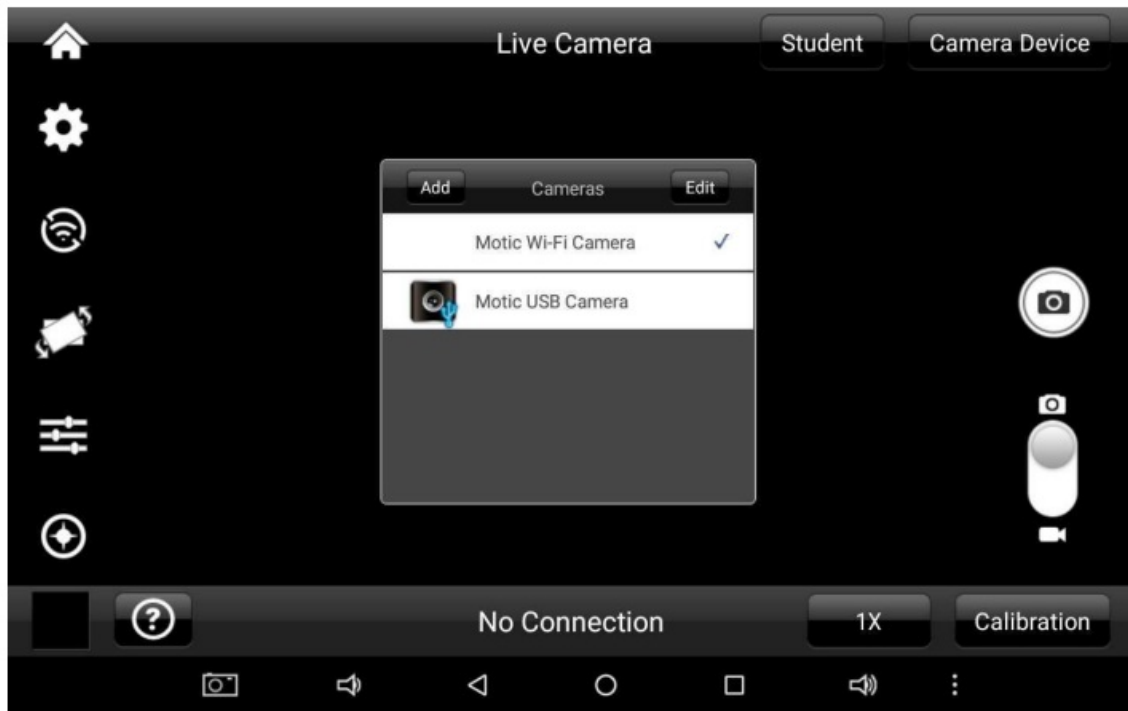


MotiConnect Quick Start

1. From the main tablet screen, click on MotiConnect App Icon



2. Secondly, from the MotiConnect app, click on Camera Device. From here click on Motic WiFi Camera. This will open the WiFi camera live image. You can begin viewing.



Using a WiFi device that operates with Android or IOS

1. For best performance, we recommend to use WiFi devices, such as tablets, with a screen not smaller than 7 inches. For iOS devices we suggest using iOS 5 or higher while for Android Devices we suggest using Version 4.0 or Higher.
2. To operate and use the camera on your tablet, please download our free App called MotiConnect. For iPad you can find this on the AppStore, for Android devices you can find this on Google Play.

Use the Moticam X5 on your WiFi or Network enabled computer

The Moticam X5 can also be used with Motic Images Plus software. See links our website to download the software

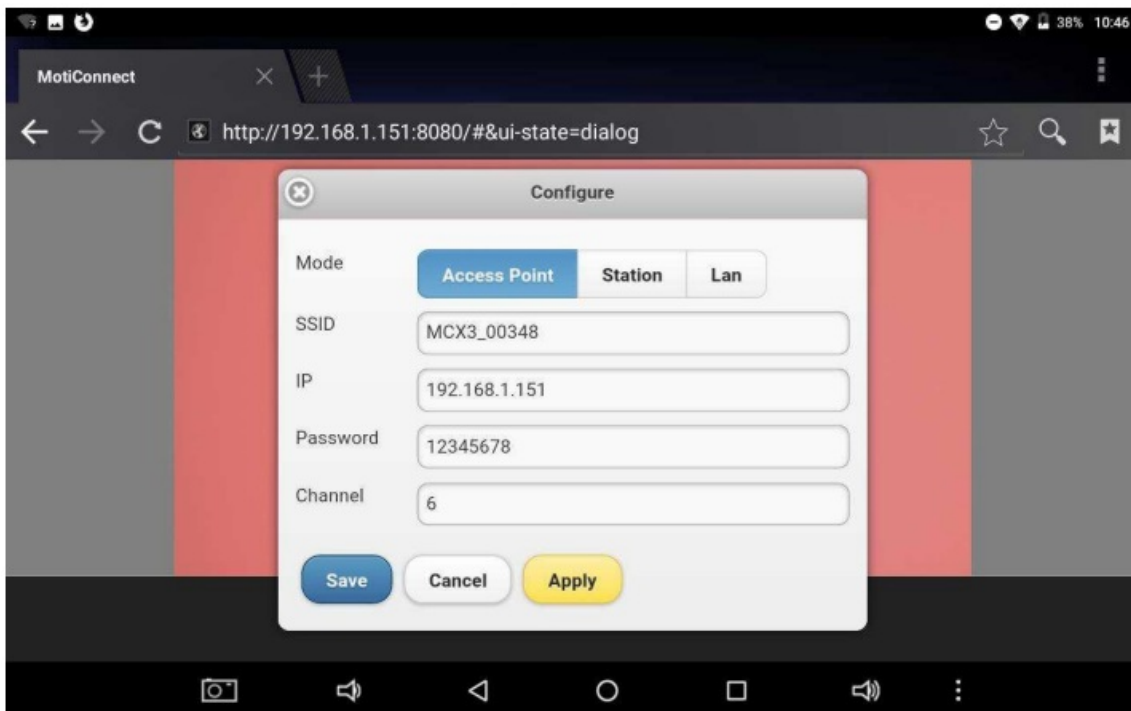
To view the camera in our product's MI Devices interface, simply log your computer onto the Moticam X5 WiFi signal, by selecting this WiFi connection and entering the password. Then open the MI Devices interface by clicking on the camera icon within Motic Images Plus and select Moticam X5 from the drop down menu. Then click

on Open.

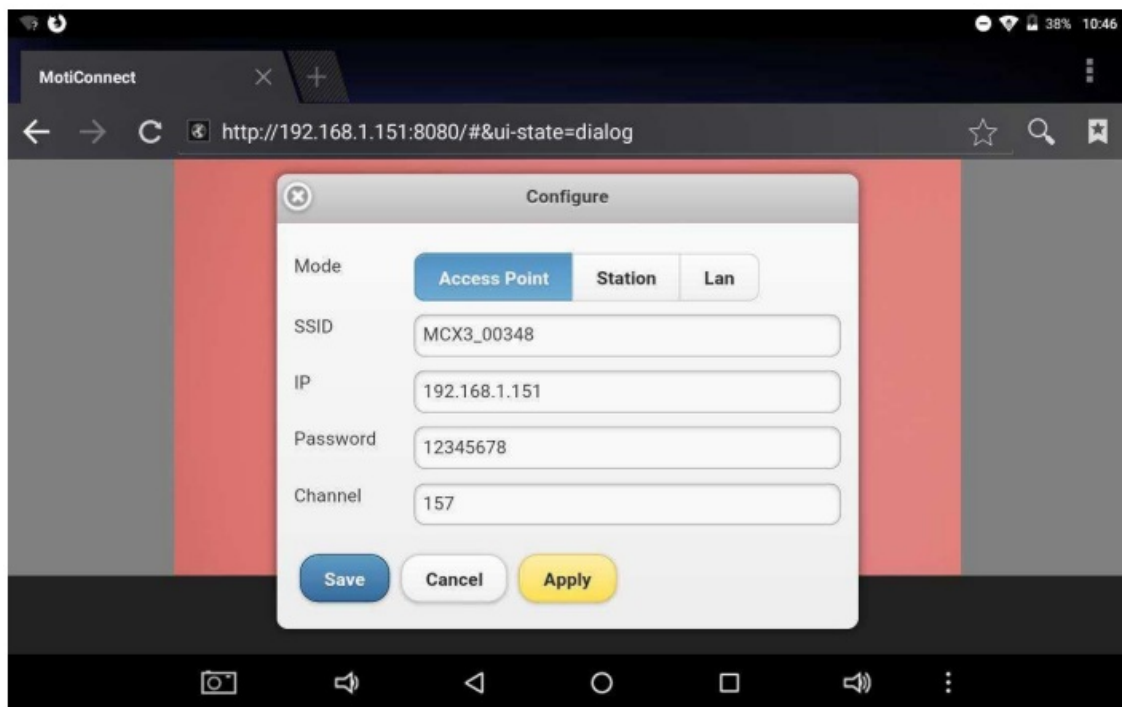
Switching the Moticam X5 between 2.4 GHz and 5 GHz

First, always make sure you have installed the latest version of the MotiConnect App or Motic Images software. Secondly before switching from 2.4 GHz to 5 GHz make sure you are using a device with confirmed 5 GHz capability. Failure to use a 5 GHz device will render the camera unusable until a 5 GHz device is connected. The Moticam X5 SSID will not be visible to any 2.4 GHz devices in 5 GHz mode. Please heed this warning. 5 GHz mode will allow for faster frame rates for improved video and screen resolution.

1. With your 5 GHz ready device open the IP app using any an HTML5 browser.
2. When the browser opens, type in the following in the address bar: <http://192.168.1.151:8080>
3. When the MotiConnect webpage opens, select the configure tab.
4. Under Access Point, locate Channel.
5. By default the Channel will be either 1 or 6: See picture below



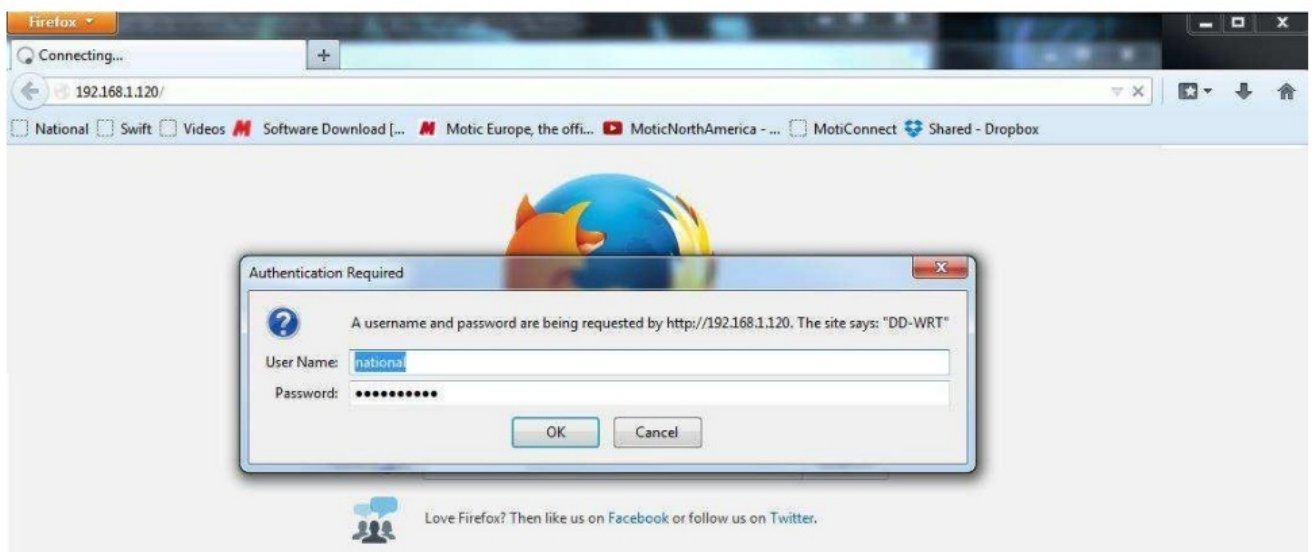
6. When using either Channel 1 or 6, the camera can be used in 2.4Ghz mode.
7. If you wish to change the camera mode to 5Ghz, change the Channel to 149 or 157



8. Once changed, you will need to click on Save first, then Apply. Make sure to write down any and all changes you make on this tab. Any changes made here will affect how you connect to the camera later.
9. The camera will disconnect and no longer be available for detection on any 2.4Ghz devices.
10. With your 5Ghz device, locate the camera on your available WiFi devices. The SSID and Password will remain the same unless you changed it on the Configure Tab.
11. Open the MotiConnect app, select image adjustment icon, select H264, close and re-open the app.
12. There should be a noticeable increase in frames per second. (FPS rate will vary by device)

Linking the Moticam X5 to a network (Wired using RJ-45)

1. Connect an Ethernet cable from the RJ-45 port on the Moticam X5 to the back of your router in one of the LAN ports and turn on the Moticam X5.
2. Go to your router's configuration page (usually 192.168.0.1) and log into the router.



3. My router uses DD-WRT, and the following steps will be different for different brands of routers. You will need to find where your router lists the IP addresses of devices that are connected to it. You will then find what IP address was assigned to your Moticam X5, so that you may access the Moticam X5 from any device connected to that network.

BUFFALO
POWERED BY DD-WRT

Firmware: DD-WRT v24SP2-MULTI (07/05/12) std
Time: 15:23:30 up 21:48, load average: 0.09, 0.14, 0.20
WAN IP: 192.168.12.129

Setup Wireless Services Security Access Restrictions NAT / QoS Administration **Status**

Router WAN **LAN** Wireless Bandwidth Sys-Info

Local Network

LAN Status

MAC Address	B0:C7:45:68:82:81
IP Address	192.168.1.120
Subnet Mask	255.255.255.0
Gateway	0.0.0.0
Local DNS	0.0.0.0

Active Clients

Hostname	IP Address	MAC Address	Conn. Count	Ratio [4096]
Techsup-PC	192.168.1.169	00:1b:2f:30:ef:2f	109	3%
*	192.168.1.160	ec:17:2f:6c:9f:7a	0	0%

Help more...

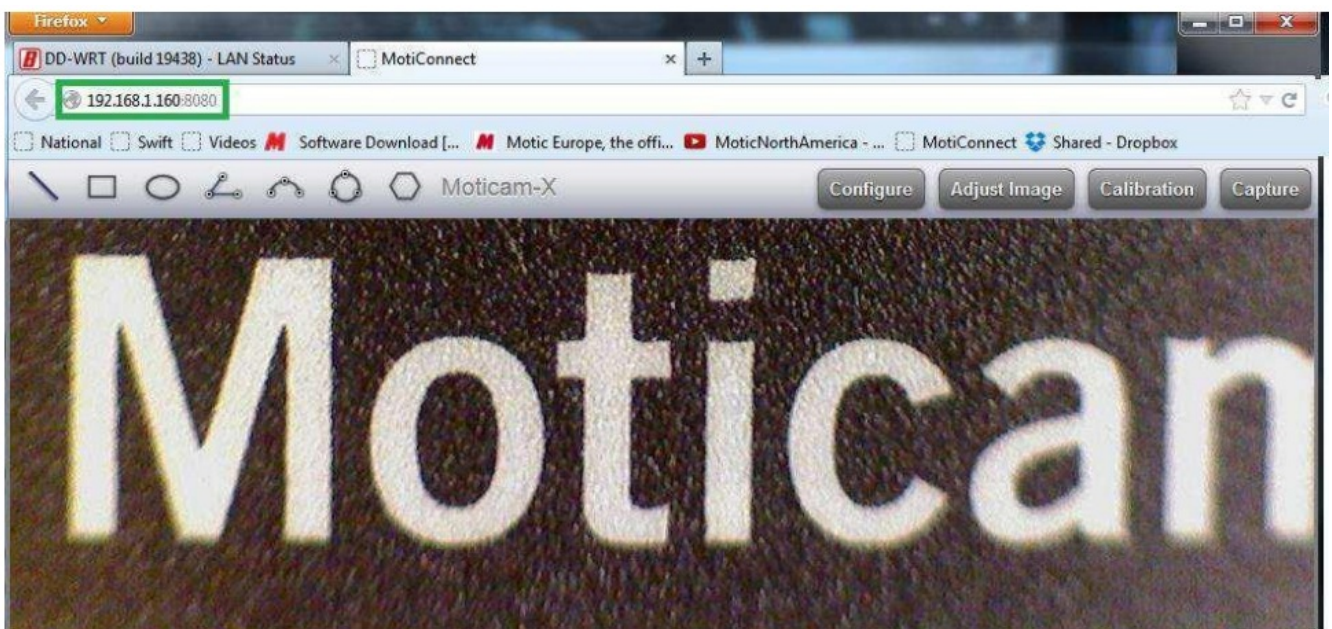
MAC Address:
This is the router's MAC address, as seen on your local Ethernet network.

IP Address:
This shows the router's IP address as it appears on your local Ethernet network.

Subnet Mask:
When the router is using a subnet mask, it is shown here.

DHCP Server:
If you are using the router as a DHCP server, that will be displayed

- On my router, you click "Status" then you click the "LAN" tab in order to find the connected devices to the LAN. The Moticom X5 shows up on my network as having a Hostname of * and an IP address of 192.168.1.160. The new Moticom X5 will usually show up as "MoticomX" in the list of connections. Write down the IP address assigned to your Moticom X5.
- You may now enter the IP address into any browser of any device connected to the network, or you can use Moti Images Plus 3.0 (PC or Mac) or MotiConnect (Android/iOS/Chromebook). In my case, I am using <http://192.168.1.160:8080>



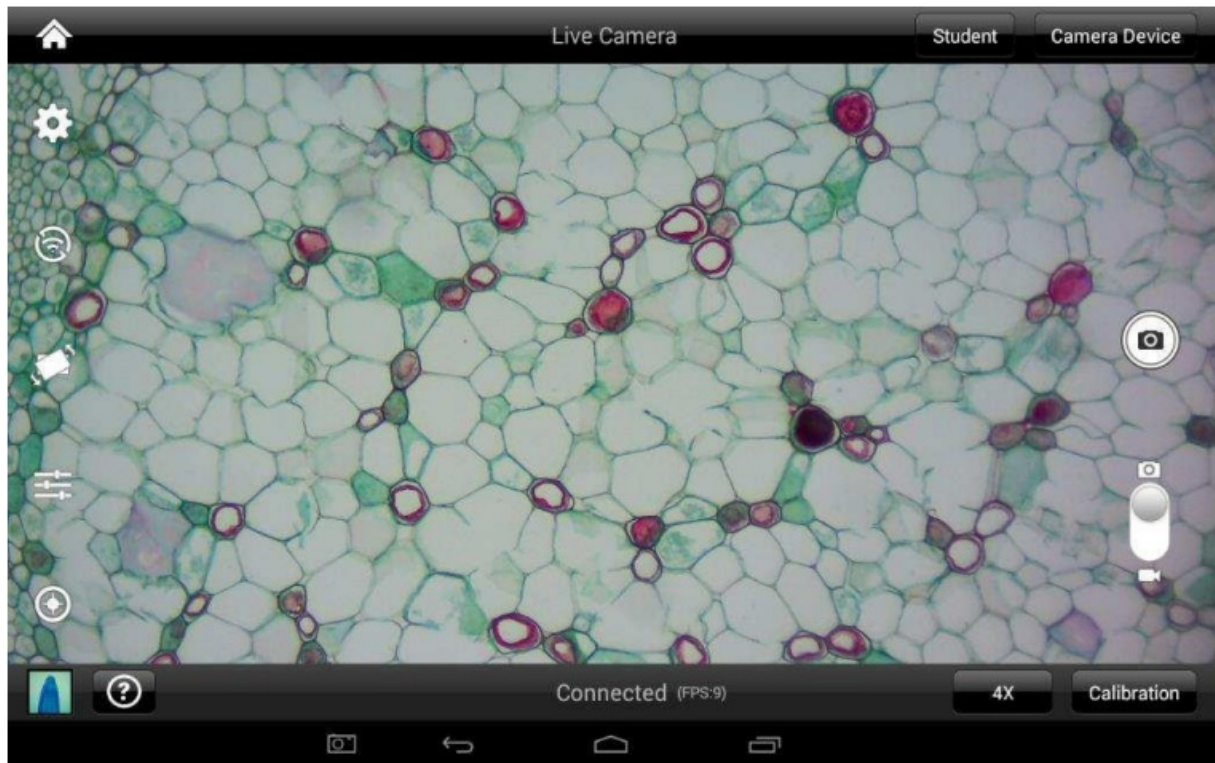
TABLET SOFTWARE

This android tablet comes equipped with all the necessary software needed to start using your equipment out of the box. Since it is an android tablet, you will be able to connect to your office/school Wi-Fi network to access the internet and download additional applications. The primary application for accessing your camera is MotiConnect.


MOTICONNECT OVERVIEW – HELP MENU

MotiConnect is a dedicated image processing Android app for Moti cameras, which includes image preview,

capture, recording, editing and measuring functions. Please refer to the Application Help guide for a complete description of the MotiConnect Application.



HELP BUTTON

 Help Menu – Opens a new window which provides a complete description of all the features available with the MotiConnect Application

Main

Calibration


MotiHub

Record

Gallery

Measurement

MotiConnect is a dedicated image software for microscope used on mobile tablet platform; Software includes the image preview, capture, recording, editing and measuring function.



Buttons Description

- Image size Setting: Changing preview image aspect ratio , imaging resolution and image pixel size selection.
- MotiHub Setting: Turn on and off MotiHub. When this feature is turned on, user can make use other web browsing devices to view the microscope real time image by logging into the provided IP address.
- Transform button: Mirror and Flip the preview image.

CALIBRATION – (*Optional – not necessary to use your microscope*)

To prepare for the calibration process, please make sure you have the calibration slide. The calibration slide has four individual dark round circles. Each dark round circle corresponds with each objective on your microscope.

- The 1.5mm dot (150um – microns) with the 4X objective.
- The 0.6mm (600um – microns) with the 10X objective.
- The 0.15mm (150um – microns) with the 40x objective.
- The 0.07mm (70um – microns) with the 100X objective.

To begin the calibration process, place the calibration on the stage.

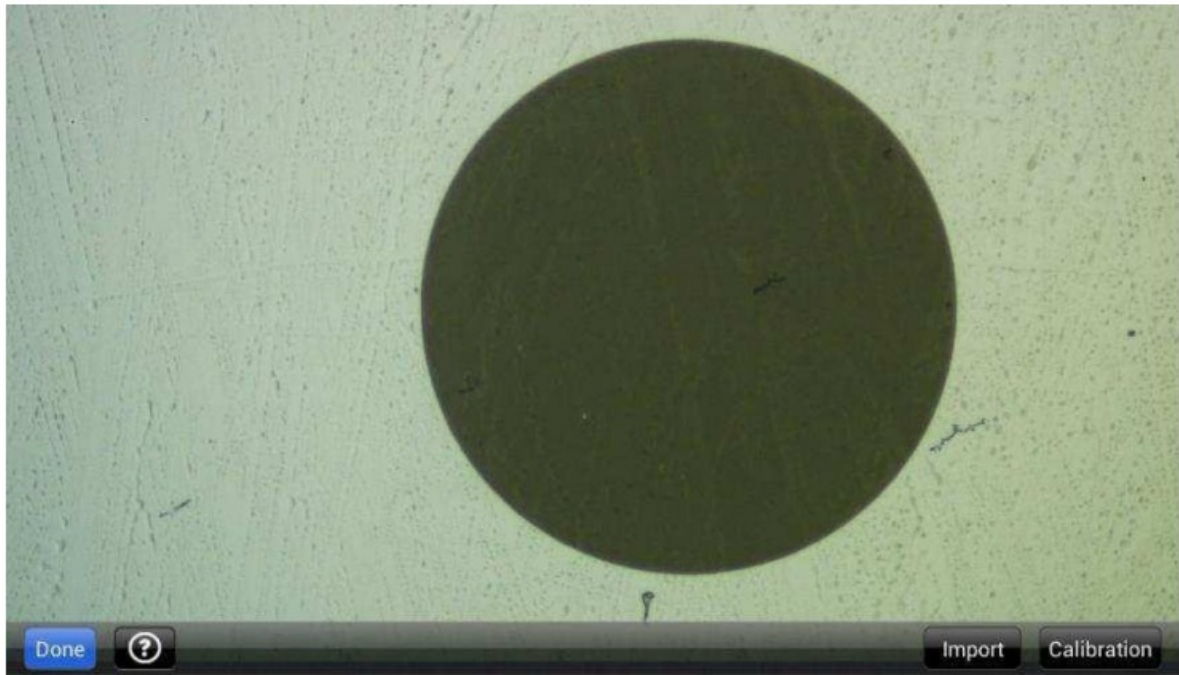
1. First place your calibration slide on the stage, switch to the 4X objective, and move the slide over to the 1.5mm dot.
2. With the dot centered on the tablet screen, select the calibration button, located on the bottom right hand side of the screen.
3. You should have a bright green circle on the screen.
4. Click the calibration button a second time.
5. This time the calibration settings window will open.
6. In the objective magnification window select the objective you captured the dot with. In this case the 4X objective.
7. In the diameter window select the diameter of the dot you captured. In this case the 150um. Then click OK.
8. The last window that will open is the Save Sign window. Since you capture this image with the 4X objective, it is best to enter this on this line.
9. The objective line should default to the objective you are calibrating. In this case it should say 4X.
10. The X and Y numbers on the next two lines should be near identical. Look at the first three numbers. As long as they are the same within one or two digits, you have a good calibration.
11. Click Ok and you are done.

Calibration

- To begin click on Create Calibration. Get out your Calibration Slide.



- The software will capture the image from the preview mode and input the image into calibration mode.



- Now put the Calibration slide on the stage of the microscope and focus the dot in the center of the screen. For 4x Objective, use the 1.5mm dot. For 10x Objective, use the 0.6mm dot. For the 40x Objective, use the 0.15mm dot. For the 100x Objective, use the 0.07mm dot.

After your dot is in focus, select “Create Calibration” then “Calibration” to add a new set of calibration parameters into the calibration table. You should have a bright green circle (shown below). If you don’t have a bright green circle, the calibration failed. Make sure the slide is clean and the image has sufficient lighting.

If the calibration is successful, choose what objective you’re using on the microscope under “Objective Magnification” then select the length of the diameter of the dot, then tap OK. A calibration is needed for each objective that will be used in measuring, so repeat the process if necessary.



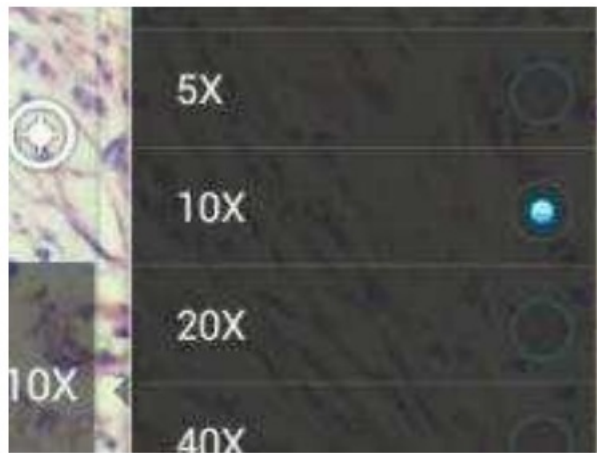
- Software will provide the $\mu\text{m}/\text{Pixel X}$ and $\mu\text{m}/\text{Pixel Y}$ based on the previous users provided information.

Save Sign

Sign Name	Sign_20140821_122506
Objective	10X
um/Pixel_X	0.17123
um/Pixel_Y	0.17084

OK Cancel

- Users can save those parameters with user assigned own Sign Name. This new Sign Name will be saved in the calibration table for the future use.
- Objective Magnification: If users change the objective magnification number, please ensure same magnification number is selected on the software. There is no need to re-calibrate the system.



MOTICAM X5 Information:

- The Moticam X5 by default operates in 2.4 GHz mode.
 1. Allows for connection to devices without 5 GHz compatibility.
- In 2.4GHz mode, frame rates will be much slower, comparable to the Moticam X and X2.
- When the X5 is switched on (first time) it resets to JPG mode.
- JPG mode is the default mode at 2.4 GHz.
- In order switch the camera into 5 GHz mode, end user tablets / phones must have H264 hardware decoding.
 1. End user is responsible for finding this information from device manufacture.
 2. White BTX tablet has H264 hardware and is 5 GHz compatible.
- Whenever the X5 is used with an HTML browser, the X5 will automatically switch to jpg mode. The JPG mode will remain for both browser and app, until the X5 is reset again (off and on).
- Normally the app should provide much faster (up to 30 fps) frame rates when it is in H264 mode, but is still subject to the device's H264 chip.
- H264 mode must be selected, in 5 GHz mode and found under the image settings tab of MotiConnect app, to achieve faster frame rates. Once selected the app must be reopened.
- In the event of a reset, the X5, will keep the original default SSID, password, 2.4GHz settings
- In browser mode, the X5 will not be able to provide 30 fps, in either 2.4 GHz or 5 GHz mode.
- In browser mode, the best the X5 can only achieve is 15 fps at 1280X720 or lower resolution. However, this can vary from device to device.


HTML BROWSER

- Browsers will only support the camera in JPG mode
- Will average 2-7fps in full HD mode.
- Most devices, such as Chromebooks, older laptops, older PCs (with WiFi), and older tablets will require the Moticam X5 to operate in 2.4GHz mode
- Operation and frames rates comparable to the Moticam X and X2.

MOTICONNECT

- The app supports both jpg mode and H264 mode.
 - Can be used at both 2.4 GHz and 5 GHz.
 - Fast frame rate can only be achieved if:
 1. The tablet/device is 5Ghz compatible
 2. The table/device is using the MotiConnect app
-

Documents / Resources

 <p>D-Motacam BTX Microscope Tablet / Camera</p>	<p>Motic Swift BTX5-8 Detachable Tablet for Trinocular Microscopes [pdf] User Manual BTX5-8 Detachable Tablet for Trinocular Microscopes, BTX5-8, Detachable Tablet for Trinocular Microscopes, Trinocular Microscopes, Microscopes</p>
---	---

References

- [User Manual](#)

[Manuals+](#), [Privacy Policy](#)

This website is an independent publication and is neither affiliated with nor endorsed by any of the trademark owners. The "Bluetooth®" word mark and logos are registered trademarks owned by Bluetooth SIG, Inc. The "Wi-Fi®" word mark and logos are registered trademarks owned by the Wi-Fi Alliance. Any use of these marks on this website does not imply any affiliation with or endorsement.