

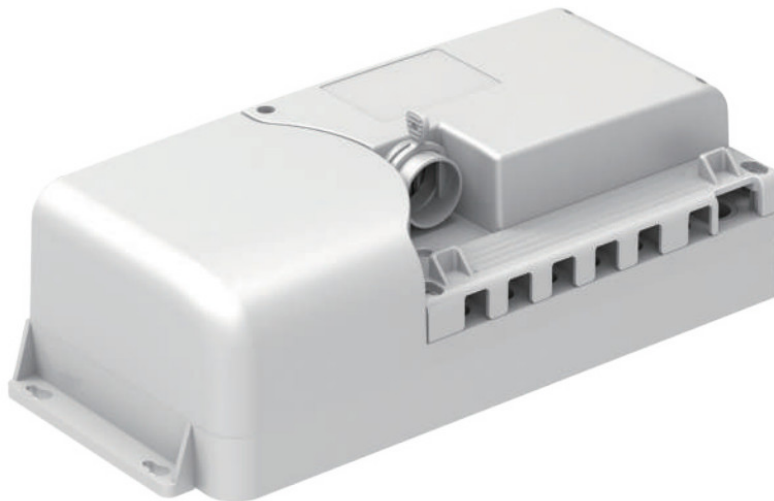


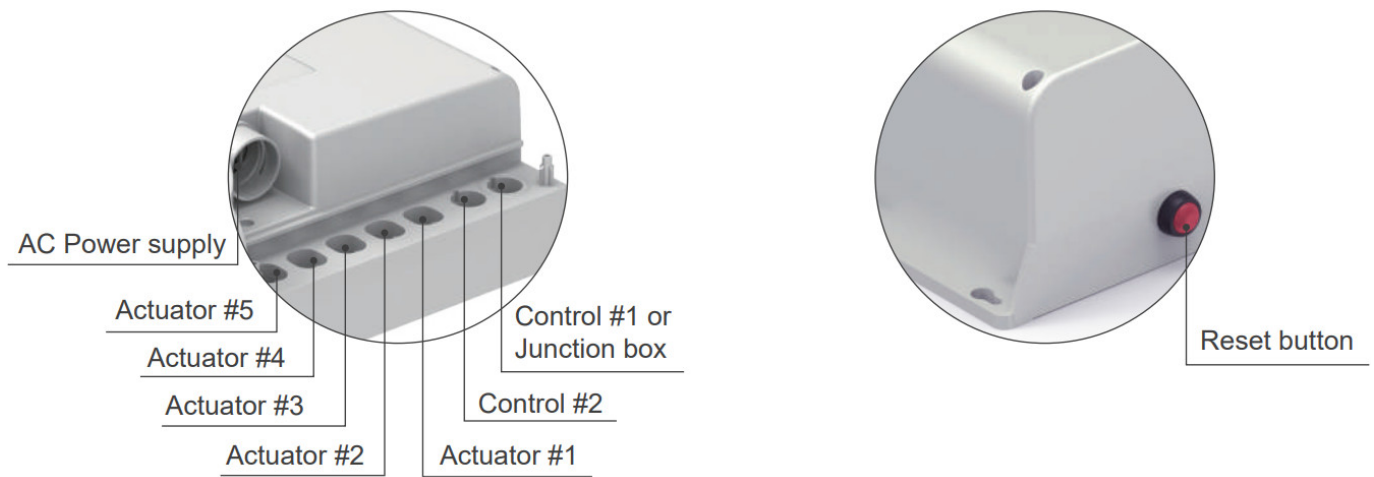
## MOTTECK CB5P-M Control Box Instruction Manual

[Home](#) » [MOTTECK](#) » MOTTECK CB5P-M Control Box Instruction Manual 

# MOTTECK<sup>®</sup>

User Guide  
Control Box  
CB5P-M





Revision	2023.12_V1.2Revision
----------	----------------------

Technical changes may be made to improve the product without notice!

## Contents

- [1 Guide for Anti-Pull Cover](#)
- [2 Auto Stroke Learning](#)
- [3 Guide for Reset Button](#)
- [4 Battery Replacement](#)
- [5 Recommendation for Lead-Acid Batteries](#)
- [Maintenance](#)
- [6 Documents / Resources](#)
- [6.1 References](#)

## Guide for Anti-Pull Cover

### ● For Actuators and Control plugs

Remove: Loosen the 2 screws (Fig.1), then the anti-pull cover can be removed from the control box

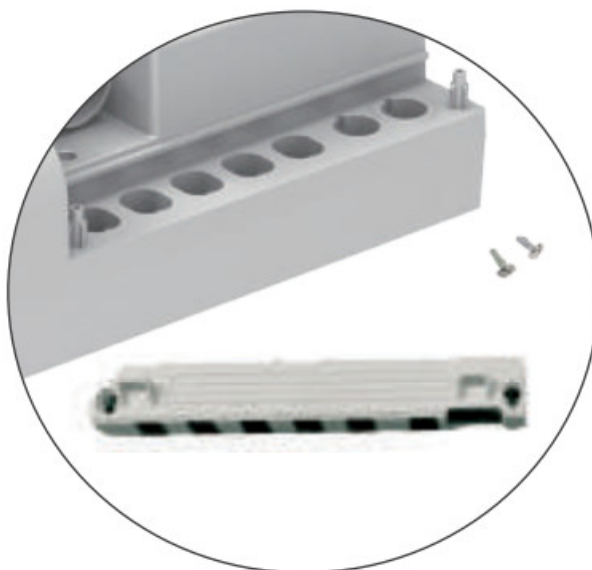


Fig.1

**Install:** Put the anti-pull cover on the control box, and then lock the corresponding screw according to the screw hole position. (Fig.2)

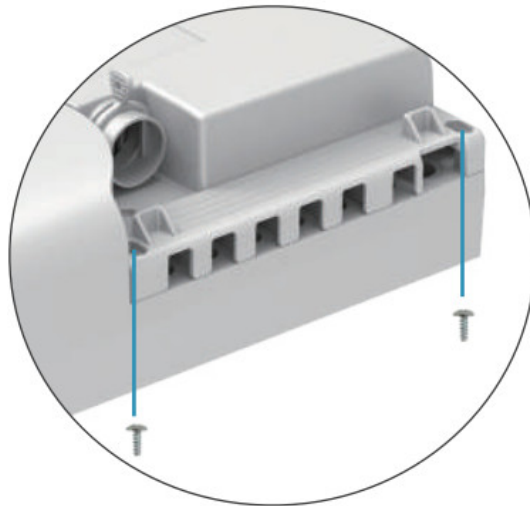


Fig.2

## Auto Stroke Learning

● After installing the entire system correctly, you need to perform Auto Stroke Learning before you start using it. Please follow the steps of each compatible control.

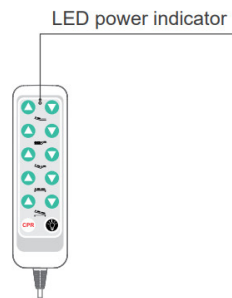
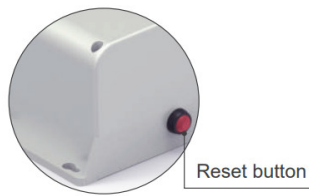
Compatible Controls	Function Model	Operation for Learning
CP1. CP2, HS12-M, 1-13T-M	With CPR button	Press the retract button on the control, to individually retract actuators to the bottom and reset zero position one by one.
	Without CPR button	Press the CPR button on the control, all the actuators will automatically retract to the bottom and reset zero position.
	With CPR and tilt button	1.First, press Tilt button(left & right) at the same time to reset the Tilt actuator 2.Then press the CPR button to let other actuators automatically retract to the bottom to reset zero positions.

## Guide for Reset Button

### ● Use timing

It is recommended to connect the AC power supply to charge for at least 4 hours before first use. If the batteries cannot be charged for a long time, you need to press the “Reset” button to power off the batteries to ensure that the batteries will not be damaged due to over-discharge.

Under normal circumstances, please keep the control box connected to AC power as much as possible.



HS12-M hand control

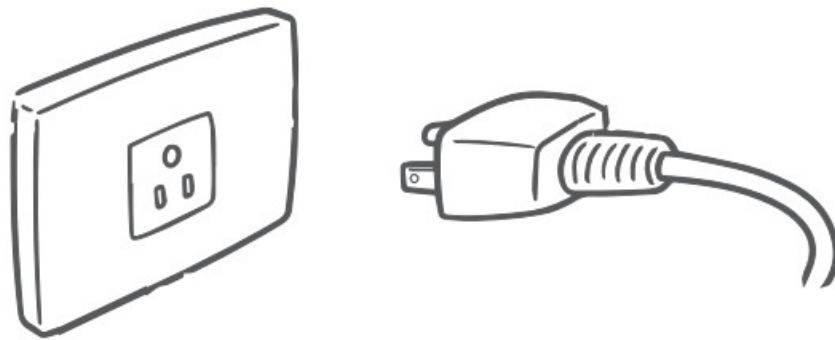
### ● Instruction

#### Power-Off:

Please unplug the AC power plug first, and keep pressing the “Reset” button for about 3 seconds until the power indicator of the hand control is off (indicating that the power is off), then you can release the button.

#### Power Restoration:

Plug in the AC power plug again, the batteries will automatically reset, and the control box can resume normal use.



## Battery Replacement

Step 1: Remove AC Power Supply cable

Step 2: Loosen the 4 screws on the upper cover of the control box. After removing the upper cover, you can see 2 lead-acid batteries. (Fig.1, 2)

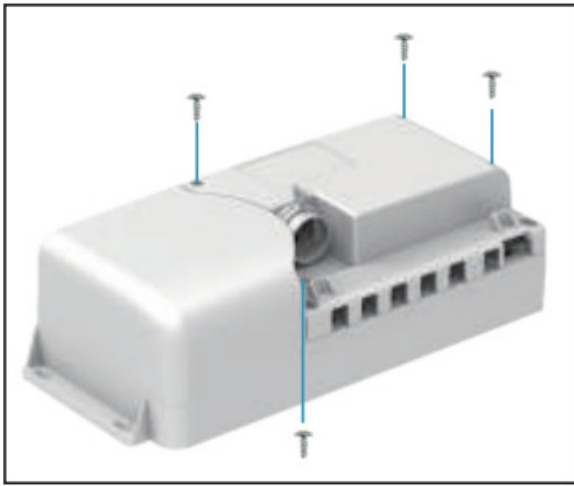


Fig.1



Fig.2

Step 3: Please place the batteries in the direction shown in Fig.3, and then unplug wire A from the batteries.  
 Step 4: After unplugging wires B and C, the batteries can be removed. (Fig.3, 4)

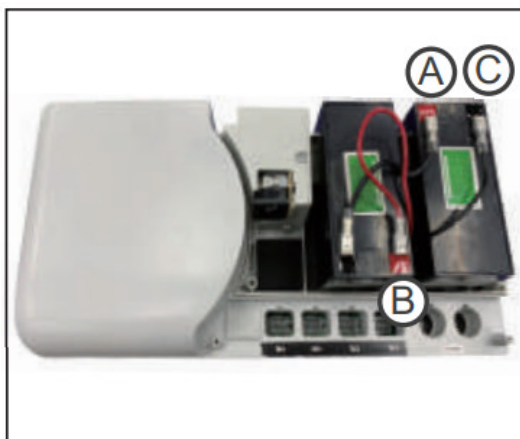


Fig.3

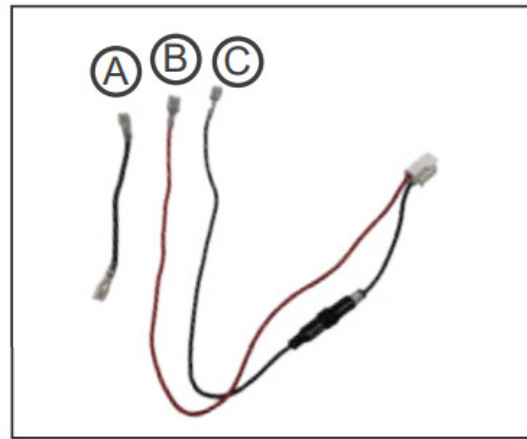


Fig.4

Step 5: After replacing the new batteries, please connect the wire A first, connect one end to the red positive pole (+), and one end to the black negative pole (-) of the other battery. (Fig.5)

Step 6: Then connect wires B and C, please note that the wire B is connected to the positive (+) pole and the wire C is connected to the negative (-) pole. (Fig.6)

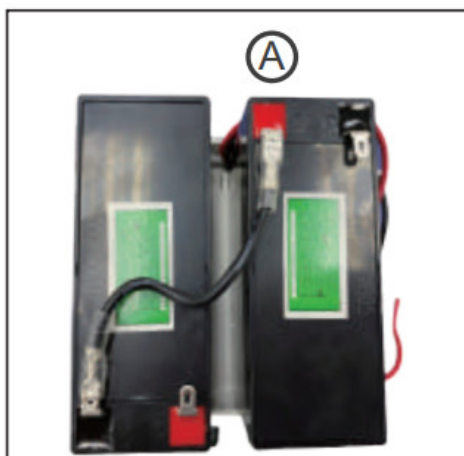


Fig.5

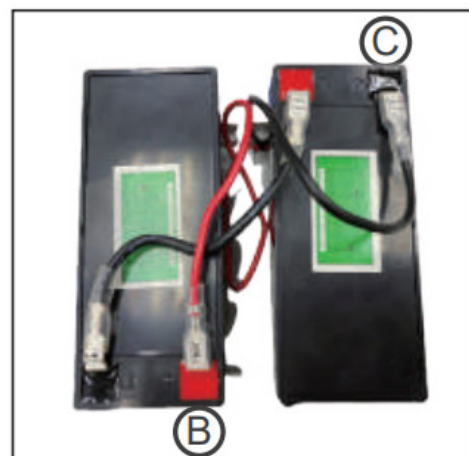


Fig.6

Step 8: Install the upper cover, and then lock the 4 screws back (Fig.1)

Step 7: After all the wires are connected, please place the batteries in the direction shown in Fig.2

Step 9: Reconnect the AC Power Supply cable and the control box can resume normal use.



#### Notice

- After replacing the batteries, if you do not use it immediately, you need to press the “Reset” button to cut off the batteries power, so as not to shorten the batteries life due to over-discharge.

### Recommendation for Lead-Acid Batteries Maintenance

- For end users, in order to obtain the best service life, the product must be connected to the mains as much as possible. And charge it at least once every 1.5 months.
- In order to avoid damage to the product, users are not allowed to replace the batteries by themselves. If replacement is required, it must be handled by the dealer.

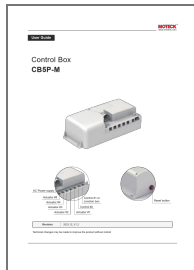
**MOTECK®**

[www.motECK.com](http://www.motECK.com)

#### Terms of Use

The user is responsible for the suitability of MOTECK products, and the products listed on the MOTECK website are subject to change without notice. MOTECK reserves the right to terminate sales or delete any products displayed on the website or listed in its catalog.

### Documents / Resources



[MOTECK CB5P-M Control Box](#) [pdf] Instruction Manual  
CP1, CP2, HS12-M, H3T-M, CB5P-M Control Box, CB5P-M, Control Box, Box

### References

- [Electric Linear Actuators | MotECK Professional Linear Actuator Company](#)
- [User Manual](#)

#### Manuals+, Privacy Policy

This website is an independent publication and is neither affiliated with nor endorsed by any of the trademark owners. The "Bluetooth®" word mark and logos are registered trademarks owned by Bluetooth SIG, Inc. The "Wi-Fi®" word mark and logos are registered trademarks owned by the Wi-Fi Alliance. Any use of these marks on this website does not imply any affiliation with or endorsement.