



MOSAIC Settling up your Wi-fi and App User Guide

[Home](#) » [MOSAIC](#) » MOSAIC Settling up your Wi-fi and App User Guide 

MOSAIC Settling up your Wi-fi and App



Gettng started with the App

The App allows you to manage your home or small business Wi-Fi network. You can self-install and be managing your home or business within a few minutes. Download the app and start managing your home network today!

Next:

Refer to the MosaicEdge Consumer Product Guide for details on how to use specific features.

Need help?

Contact support: ExperienceMosaic.com OR 715.458.5400

Contents

- [1 Seng up your Wi-Fi and App](#)
- [2 Documents / Resources](#)
- [3 Related Posts](#)

Seng up your Wi-Fi and App

1. Download the app. You can search either the Apple App Store or Google Play Store for: `MosaicEdge™`, then install it on your mobile device.



2. Select "SIGNUP" towards the boom of the screen.

A screenshot of a mobile app's login screen. The background is dark and blurry. The login form is a white rounded rectangle. At the top, the word "Login" is in blue. Below it is a subtitle: "Everything you need to secure and control your home network and connected devices." There are three input fields: "Email" with the text "jamie.lee@gmail.com" and a green checkmark; "Password" with the text "CommandIQ1" and an eye icon; and "Location" with a dropdown menu showing "USA". Below these fields is a large "Login" button. Under the button is a link "Forgot Password". At the bottom is a link "Don't have an account? Sign Up".

3. Enteryourpersonal informaon. The password you enter here will be used to access the app.

Note:

Please wait at least 10 minutes aer your MosaicEdge™ router has been `turned up` before aempng step 4.

9:41

Step 1 of 3

Sign Up

Create a new account for CommandIQ

First Name

Jamie

Last Name

Lee

Email

jamie.lee@gmail.com ✓

Password

Location

USA

Sign up

4. If your system is plugged in and connected select “Yes” to connue. Otherwise select “Not Sure?” at the boom of the screen and skip to steps 4a-4e on the next page to get things connected.

9:41

< X

Step 2 of 3

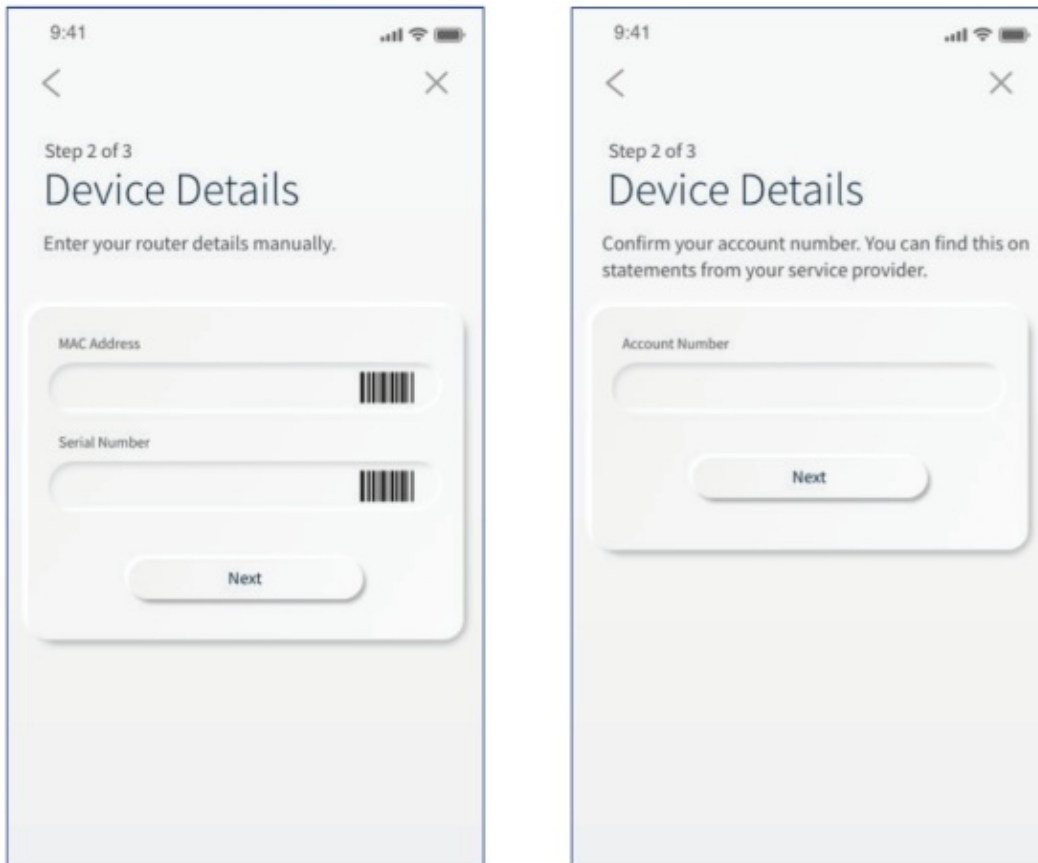
Scan Device

Scan your new device to get started.

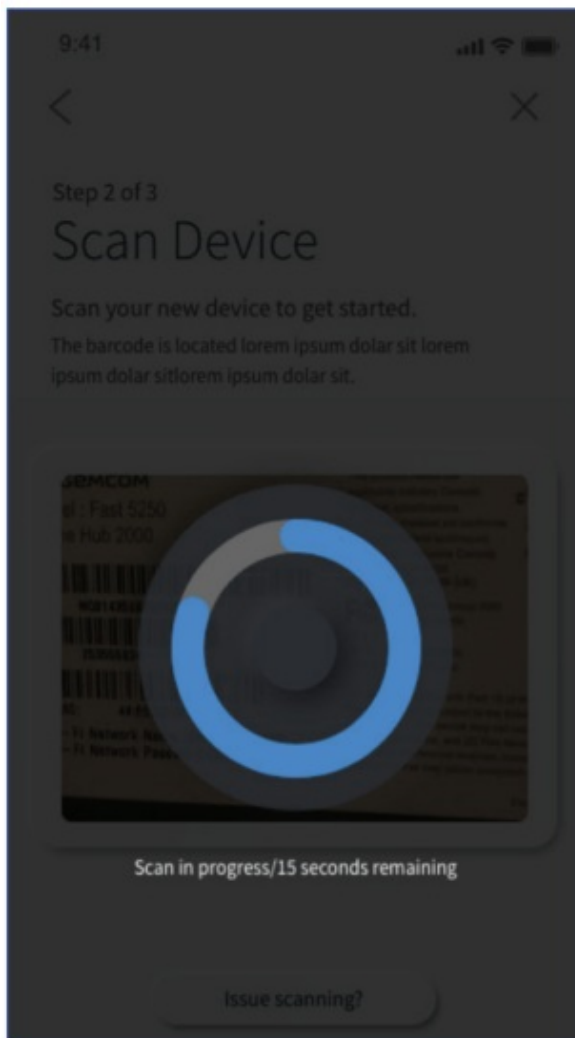
The barcode is located lorem ipsum dolar sit lorem ipsum dolar sitlorem ipsum dolar sit.

Issue scanning?

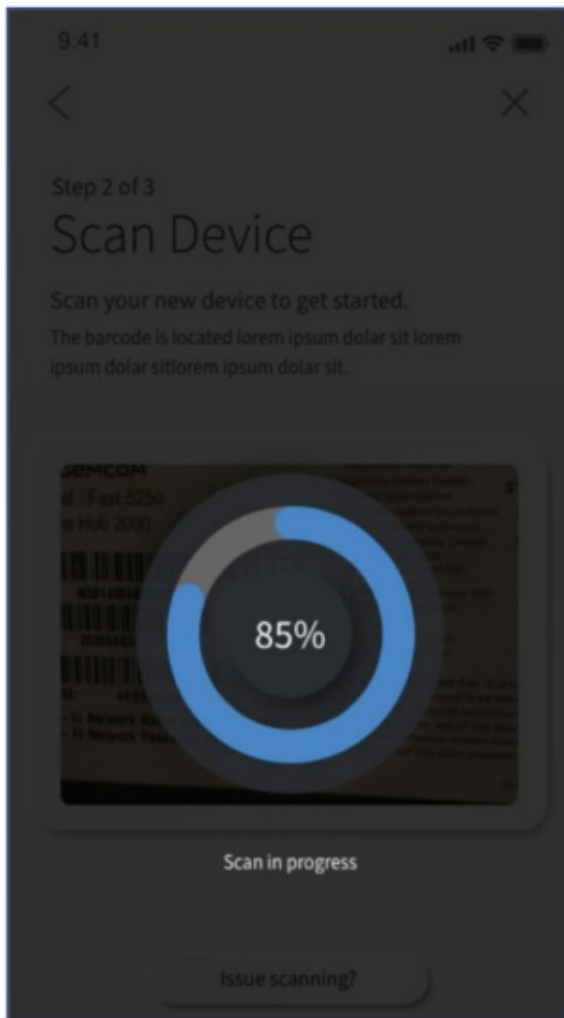
4a. It's time to setup your new system. Locate your existing internet service device. This is typically known as a modem or ONT. It may look like one of these.



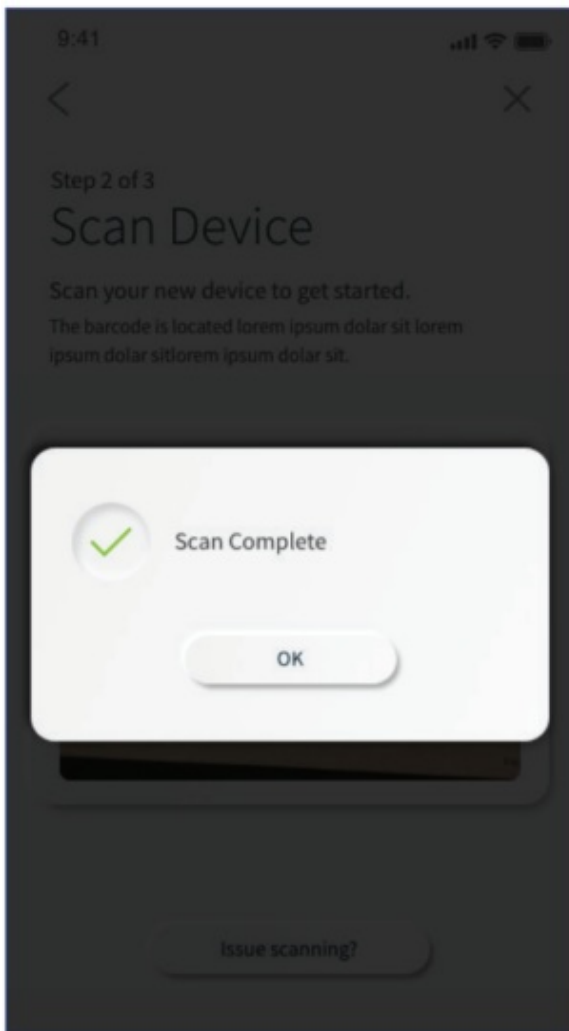
4b. Unplug the device and remove all cables.
Wait 2 minutes.



4c. After 2 minutes, plug the device back in and turn it on.



4d. Connect the ethernet cable from the ethernet/ LAN port on your existing internet service device to the port labeled WAN on your new system.



4e. Now, connect your new system to a power outlet.

It may take several minutes for the unit to be ready. It will show a solid blue light. Once the device is connected, tap "Unit Ready."

9:41

< X

Step 3 of 3

Setup Wi-Fi

 if you are replacing a router, make sure to use the same Network Name and Password

Network Name (SSID)

Jamie's Wi-Fi

Password

..... 

Encryption Type

AES Mixed 

Place (Optional)

In what place is this equipment located in your home?

Office, Living Room, etc.

5. Tap the QR code that appears within the app. (You will be asked to allow the app to access your camera.) Point your camera at the QR Code found on the boom of your MosaicEdge™ router, or on the sticker that came in your box (example shown below). Select OK. After you select "Submit", you may be asked to enter your account number.

Default Settings

SSID: CXNK001870CD


ONU MAC: 000631B41844

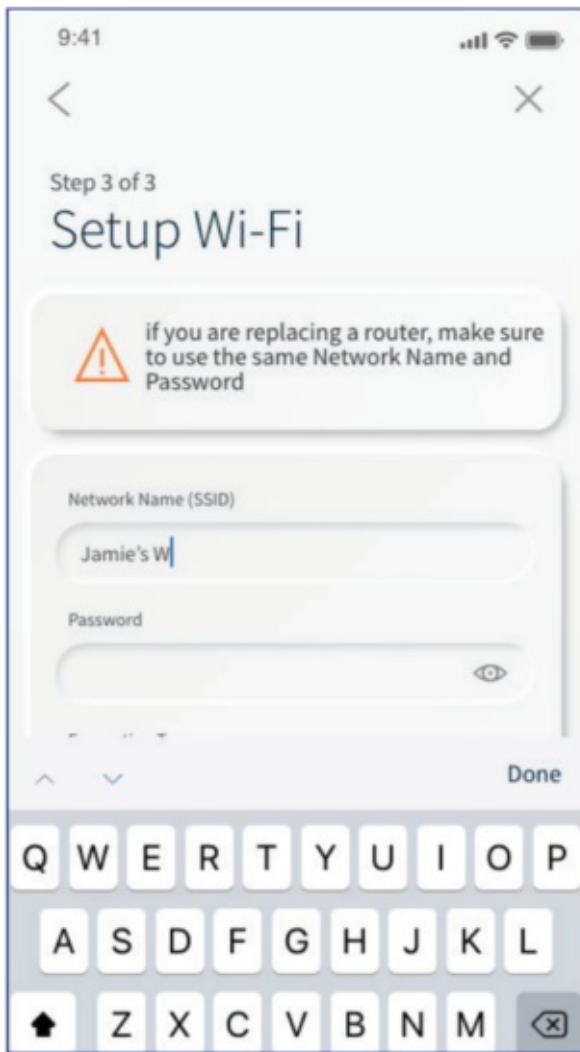
Security Type: WPA2.AES

WPA Key: 84f1415608b2cb13

IP Address: 192.168.1.1

User/Password: admin/3f7b1e66

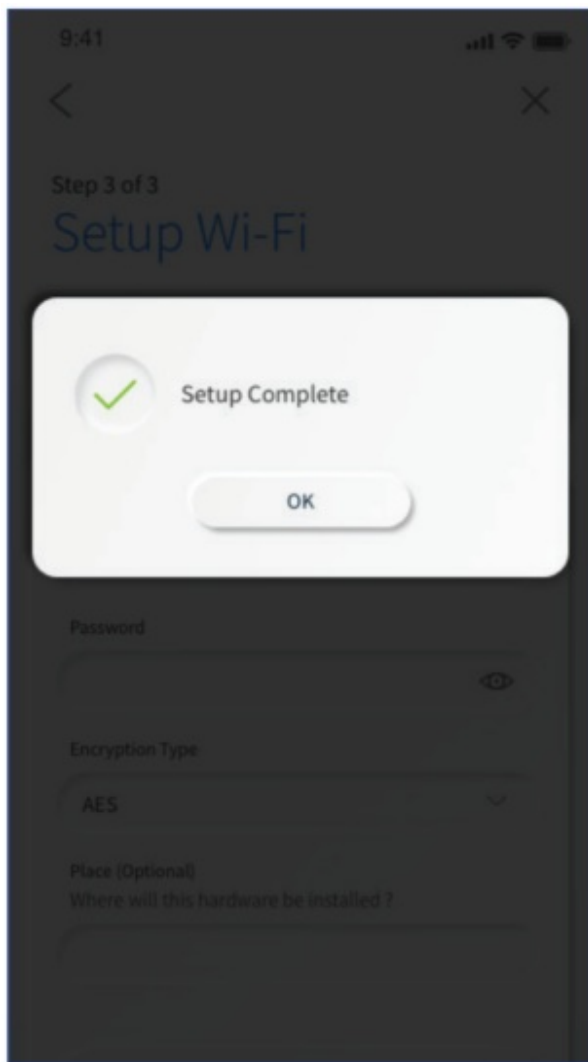




6. **Note:** If your system is already operang with Wi-Fi, tap the “Click here to skip” text. Otherwise, complete these steps to set-up your Wi-Fi.

Name your network and create a password.

- The Router Name will be used throughout the app.
- The Network Name (SSID) is what you will use as your wireless conneccon name.
- Select a password for your wireless network, if you do not want to change it on all the devices in your home, use your exisng wireless SSID and Password from your current router.



Click Submit and you're all done!

Scan the QR Code to watch a video tutorial



Documents / Resources



[MOSAIC Settling up your Wi-fi and App](#) [pdf] User Guide
Settling up your Wi-fi and App, Settling up your Wi-fi, App

