



## morphy richards MRMPO12W Multi Function Oven Instruction Manual

[Home](#) » [morphy richards](#) » morphy richards MRMPO12W Multi Function Oven Instruction Manual 

# morphy richards®

smart ideas for your home

MultiOven

INSTRUCTION MANUAL

Model: MRMPO12T & MRMPO12W

Read these instructions carefully before using this appliance for the first time.

**STORE THESE INSTRUCTIONS CAREFULLY**



For product hints and tips plus more join us at  
[www.morphyrichards.com.au](http://www.morphyrichards.com.au)

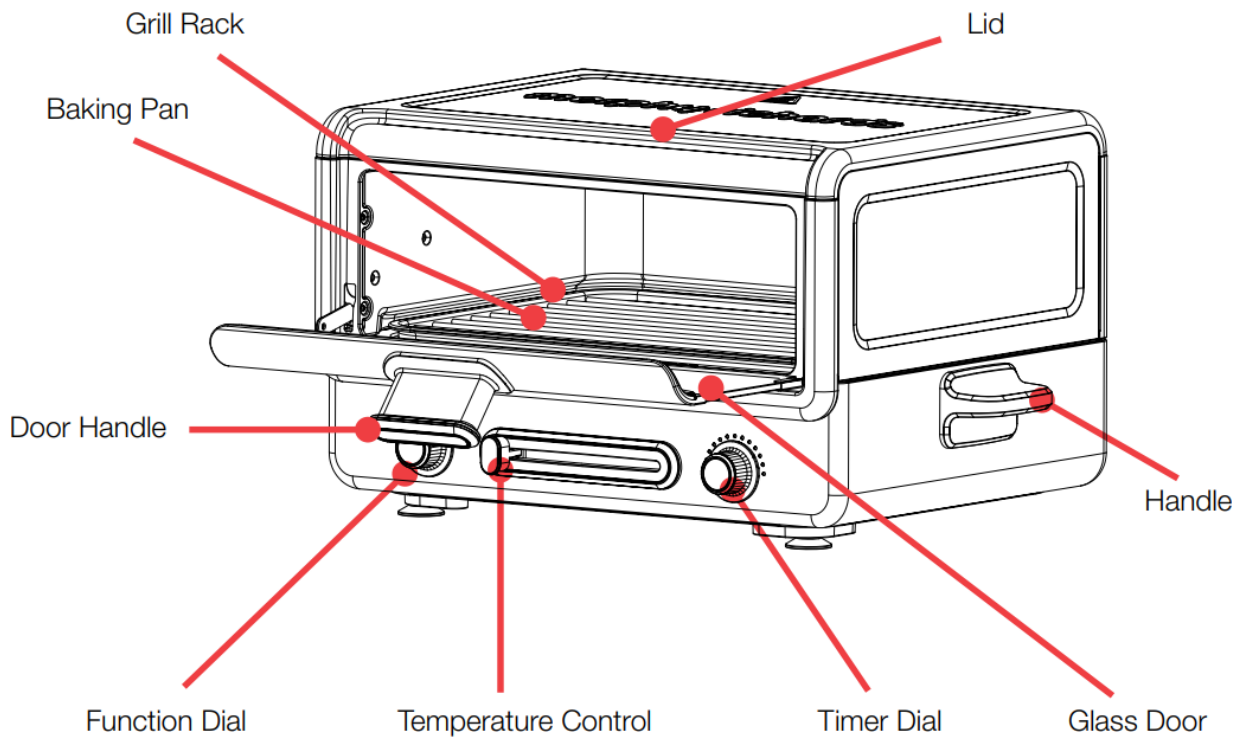
**Contents**

- 1 SPECIFICATIONS
- 2 PARTS AND ACCESSORIES
- 3 IMPORTANT SAFETY INSTRUCTIONS
- 4 CONTROL PANEL
- 5 BEFORE FIRST USE
- 6 OPERATING INSTRUCTIONS
- 7 SAFETY FEATURES
- 8 CLEANING
- 9 MAINTENANCE
- 10 WARRANTY
- 11 Documents / Resources
  - 11.1 References
- 12 Related Posts

**SPECIFICATIONS**

Model:	MRMPO12T	MRMPO12W
Colour:	Titanium	White
Rated Voltage:	220-240V-50-60Hz	
Rated Power	2000W	
Maximum Temperature:	230°C	
Maximum Oven Capacity:	12L	
External Dimensions (L x W x H):	427 x 367 x 249mm	
Net Weight:	7kg	

**PARTS AND ACCESSORIES**



## IMPORTANT SAFETY INSTRUCTIONS



### **WARNING**

#### **CAUTION: HOT SURFACE**

PLEASE BE AWARE OF HOT SURFACES  
HANDLE WITH CARE

To reduce the risk of fire, electric shock, injury to persons or damage to property, follow basic precautions including the following:

- If the power cord is damaged, it must be replaced by the manufacturer or its service agent or a similarly qualified person in order to avoid a hazard.
- Keep the appliance and its cord out of reach of children.
- **WARNING:** Misuse of appliance could cause personal injury.
- This appliance is not intended to be operated by means of an external timer or a separate remote-control system.
- The appliance is not to be used by persons (including children) with reduced physical, sensory or mental capabilities, or lack of experience and knowledge, unless they have been given supervision or instruction.
- Children being supervised are not to play with the appliance.
- In the absence of supervision, the cleaning and maintenance work should not be done by a child.
- Use of accessories not recommended or sold by the original manufacturer may cause risks of fire, electric shock or personal injury.
- This appliance must be used in accordance with the instructions and must not be used for other purposes.
- This appliance is intended to be used in household and similar applications such as:
  - staff kitchen areas in shops, offices and other working environments;
  - farm houses;

- by clients in hotels, motels and other residential type environments;
- bed and breakfast type environments.

## **Location**

- Do not use outdoors or near water, for indoor use only.
- Always use the appliance on a secure, dry level surface.

## **Power cord**

- The power cord should reach from the socket to the base unit without straining the connections.
- Do not let the cord hang over the edge of the table or counter and keep it away from any hot surfaces.
- Do not let the cord run across an open space e.g. between a low socket and table.
- This appliance has been incorporated with a grounded plug.

Please ensure the wall outlet is well earthed.

## **Personal safety**

- The door and outer surface may get hot when the appliance is operating. Use handle or knobs only.
- **WARNING:** To protect against fire, electric shock and personal injury, do not immerse cord, plugs, or appliance in water or other liquid.
- **WARNING:** Extreme caution must be used when moving the appliance when containing hot food, water, or other hot liquids.
- Unplug from the wall socket when not in use, before putting on or taking off attachments, and before cleaning.
- Do not operate any appliance with a damaged cord or plug, or after an appliance has malfunctioned, or has been dropped or damaged in any way.

## **Other safety considerations**

- Do not use any of the appliance parts in a microwave or on any cooking/heated surfaces.
- Do not place on or near a hot gas or electric burner, or in a heated oven.
- Do not leave the machine unattended.
- Never insert oversized food or flammable material such as paper, cardboard or plastic into the appliance.
- Care should be taken when disposing of hot oil/grease after cooking.

## **Treating scalds**

- Run cold water over the affected area immediately. Do not stop to remove clothing, seek medical help quickly.

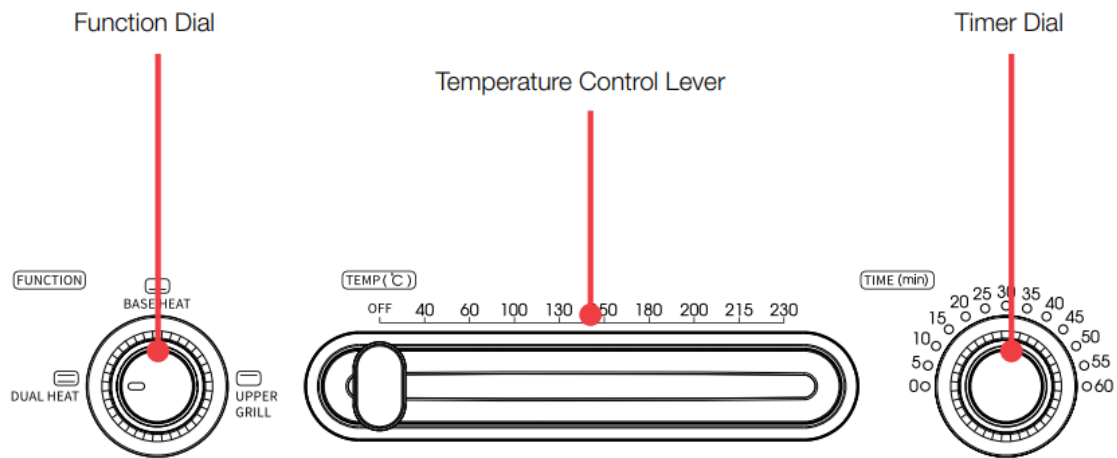
## **Electrical requirements**

- Check that the voltage on the rating plate of your appliance corresponds with your house electricity supply which must be A.C.
- **WARNING:** This appliance must be earthed.

- **WARNING:** This appliance is NOT to be used with extension leads and/or power boards.

**READ CAREFULLY AND KEEP FOR FUTURE REFERENCE**

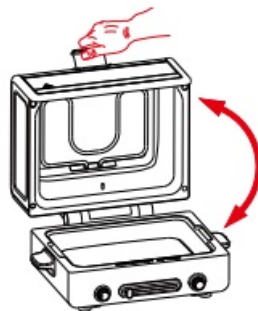
## CONTROL PANEL



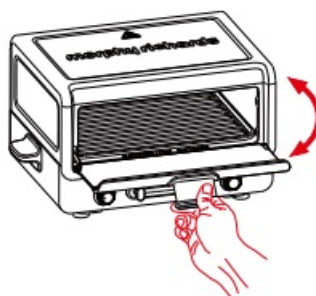
## BEFORE FIRST USE

Before using this product for the first time, please:

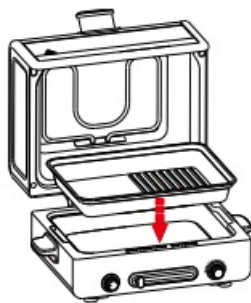
- Wash the Grill Rack and Baking Pan in warm soapy water and dry before use.
- Before placing the Baking Pan onto the base heating element, make sure there is no water between the pan base and the base heating plate.
- Ensure any accessory placed in the appliance is fitted correctly.
- Hold the door handle and lift up the top lid, which can be opened to an angle of 85°-90°.



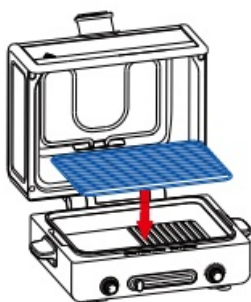
- Hold the door handle of the glass door and pull down and the glass door can be opened to an angle of 90°-95°.



- Insert the Baking Pan into the oven cavity and ensure it is stable on the base heating element.



- Place the Grill rack onto the Baking Pan.



- **NOTE:** The appliance is not designed for steaming food, so please do not over fill the baking pan with water and steam food on the grill rack, this could cause burning or an electric shock.
- **NOTE:** The Grill Rack is not be used directly on the heating element. It can only be used on the Baking Pan.

## OPERATING INSTRUCTIONS

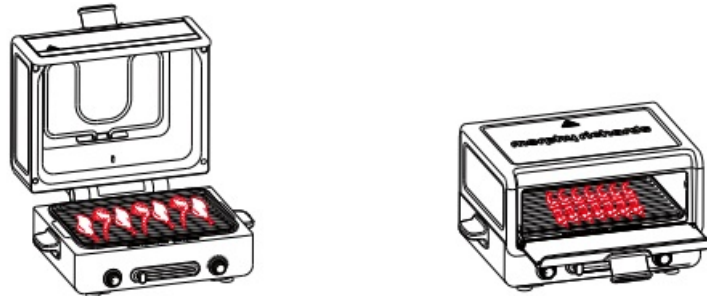
- After connecting the power and turning the unit on, a short beep will be heard and the timer dial indicator will illuminate for 2 seconds, and then the power indicator will illuminate solidly.
- Turn the Function Dial to the desired cooking setting. Dual Heat for all round cooking, baking, roasting and panini's & pizza's. Base Heat for frying, searing, grilling or BBQ and Upper Grill for toasting, reheating or giving foods a lovely crispy finish.
- Select the desired temperature with the Temperature Control. The adjustable temperature ranges between 40°C and 230°C. One beep can be heard after every temperature selection. After reaching the selected temperature or 5 minutes after the heating time is reached, three beeps can be heard and preheating is completed.
- If you want to use the timer, turn the dial clockwise to select the corresponing time in 5 minute increments. Turn the dial anti-clockwise to reduce the timer. The appliance will turn off automatically after the time expires.
- The unit can be turned off manually by sliding the Temperature Control to OFF or automatically when the timer has been used and the time expires.
- **WARNING:** During heating, the main body, Baking Pan and Grill Rack will become very hot, so please handle carefully to prevent being burnt.
- **NOTE:** When heating for the first time expect a small amount of smoke. This is normal and should stop within 15 minutes. For the first use, it is recommended to operate in a well ventilated room.
- **NOTE:** Keep at least 30mm between the top of the food and the upper grill element.

- **NOTE:** The Grill Rack is not to be used directly on the base heating element. It can only be used on the Baking Pan. Do NOT put food directly on the heating element, only the Baking Pan or Grill Rack.

## DUAL HEAT FUNCTION

Baking, roasting and cooking panini's & pizza's can be done with the Dual Heat function.

- Open the top lid or pull down the glass door by following the instructions on pg 6 & 7. Put the food on the Grill Rack and then close the top lid or glass door.



- **NOTE:** The Grill Rack is not be used directly on the heating element. It can only be used on the Baking Pan.
- Turn the Function Dial to DUAL HEAT and then select the desired temperature on the Temperature Control and select the desired time with the Timer Dial. The MultiPot with Oven will begin to operate.
- **NOTE:** During operation, you can turn the Function Dial, Temperature Control or Timer Dial to different settings.
- **NOTE:** During normal operation of the appliance, if the Function Dial is adjusted to an incorrect position, the appliance will stop working. During this time, the Timer indicator will keep flashing until the user turns the Function Dial to the correct position.
- The selected time will begin to countdown and the indicator of the selected time flashes. When the countdown is complete, five beeps will be heard and the function is completed. The power indicator will illuminate.
- **NOTE:** Continuous use of the Dual Heat function may leave a residue of cooking oils and fats in the oven cavity. It is recommended to turn the unit off and allow it to cool before cleaning the cavity carefully.
- **NOTE:** When cooking foods containing high moisture content, a little excess water may expel from the unit. This is due to the sealing of the inner cavity and has no bearing on the safety of the product.

## BASE HEAT FUNCTION

To cook kebabs or vegetables, it is recommended to use the Base Heat function using the Grill Rack on top of the Baking Pan. To fry, sear or grill meat, it is recommended to use the Base Heat function using the Baking Pan.

- Open the top lid and apply some cooking oil to the Baking Pan and then put the food on the Baking Pan. You can cook using this function with the lid open or closed.



- Turn the Function Dial to BASE HEAT and then select the desired temperature on the Temperature Control and select the desired time with the Timer Dial. The MultiPot with Oven will begin to operate.
- **NOTE:** During operation, you can turn the Function Dial, Temperature Control or Timer Dial to different settings.
- **NOTE:** During normal operation of the appliance, if the Function Dial is adjusted to an incorrect position, the appliance will stop working. During this time, the Timer indicator will keep flashing until the user turns the Function Dial to the correct position.
- The selected time will begin to countdown and the indicator of the selected time flashes. When the countdown is complete, five beeps will be heard and the function is completed. The power indicator will illuminate.
- **NOTE:** When selecting the BASE HEAT function, do NOT add any more than 50ml of water to the Baking Pan, this could cause a short circuit and other hazards caused by steam entering the top lid assembly.
- **NOTE:** The Grill Rack is not to be used directly on the base heating element. It can only be used on the Baking Pan. Do NOT put food directly on the heating element, only the Baking Pan or Grill Rack.

## UPPER GRILL FUNCTION

For toasting, reheating or giving food a golden crispy finish, then use the Upper Grill function.

- Open the glass door by following the instructions on pg 7. Place the food on the Grill Rack and close the top lid.



- Turn the Function Dial to UPPER GRILL and then select the desired temperature on the Temperature Control and select the desired time with the Timer Dial. The MultiPot with Oven will begin to operate.
- **NOTE:** Keep at least 30mm between the top of the food and the upper grill element.
- **NOTE:** During operation, you can turn the Function Dial, Temperature Control or Timer Dial to different settings.
- **NOTE:** During normal operation of the appliance, if the Function Dial is adjusted to an incorrect position, the appliance will stop working. During this time, the Timer indicator will keep flashing until the user turns the Function Dial to the correct position.
- The selected time will begin to countdown and the indicator of the selected time flashes. When the countdown is complete, five beeps will be heard and the function is completed. The power indicator will illuminate.
- **NOTE:** The Grill Rack is not be used directly on the heating element. It can only be used on the Baking Pan. Do NOT put food directly on the heating element, only the Baking Pan or Grill Rack.
- **NOTE:** Continuous use of the Upper Grill function may leave a residue of cooking oils and fats in the oven cavity. It is recommended to turn the unit off and allow it to cool before cleaning the cavity carefully.

## SAFETY FEATURES

### LID PROTECTION MECHANISM



- During operation of the DUAL HEAT or UPPER GRILL function, if the top lid assembly is opened at an angle greater than 40° one beep will be heard and the appliance will stop working and both the power indicator and time indicator will flash.



- **NOTE:** The appliance will enter standby mode if the top lid assembly has been opened for more than 10 minutes.
- When the top lid assembly is returned to an angle of about 30°, one beep will be heard and the appliance will continue working according to the function, temperature and time previously selected.



- The upper heating element will NOT work when the BASE HEAT function is selected, so the lid protection mechanism is not activated during the BASE HEAT function.

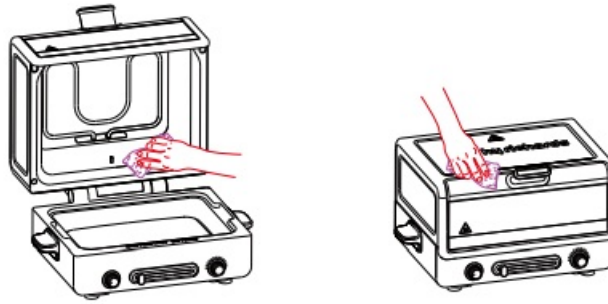
## POWER OFF MEMORY

- After the appliance has been working and it has been powered off and turned on within 10 to 20 minutes, the appliance will continue working according to the selected settings.
- **CAUTION:** When the appliance is powered off or after the appliance has finished cooking, please do not touch the outer surface, upper heating element, base heating element, baking pan and grill rack as they are could be very hot.

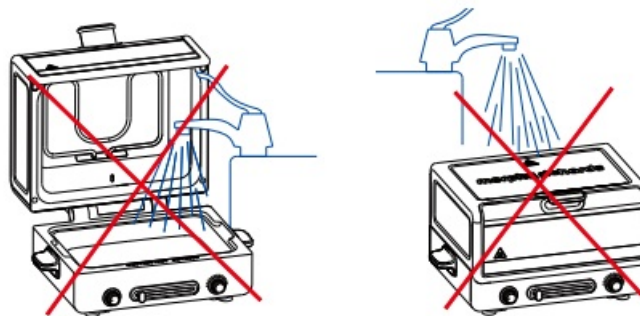
## CLEANING

### WARNING: Not Dishwasher safe

- Turn the Temperature Control to the OFF position and unplug from outlet when not in use and before cleaning. Always allow to cool completely before adding or removing parts, and before cleaning the appliance.
- **NOTE:** The baking pan and grill rack can be only removed after opening the top lid assembly.
- Wash the cooking accessories in warm soapy water after use and dry with a soft cloth.
- When cleaning the appliance, do not use an abrasive cleaner, this will damage the surface. Just wipe the surface with a clean wet cloth and dry.



- Do not submerge the base in water.
- Before cleaning and maintaining the appliance, ensure the power supply of the product has been disconnected and that the main body and accessories have cooled down completely.
- Do not rinse the inside of the appliance and the main body with water, which will cause electric shock or failure.



- Continuous use of the Upper Grill or Dual Heat function may leave a residue of cooking oils and fats in the oven cavity. It is recommended to turn the unit off and allow it to cool completely before cleaning the cavity carefully.

## MAINTENANCE

If the unit fails to operate efficiently, is broken or other problems arise, unplug and do not operate. Seek advice by calling your local after sales service agent or the Customer Care Centre on 1300 556 816 (AU) / 0800 666 2824 (NZ).

## WARRANTY

Please refer to the warranty card in the box for warranty information. For any troubleshooting advice, please contact the relative Customer Care Centre below.

Glen Dimplex Australia Pty Ltd 8 Lakeview Drive, Scoresby 3179, Victoria Australia Ph: 1300 556 816	Glen Dimplex New Zealand Ltd 38 Harris Road, East Tamaki, Auckland 2013 New Zealand Ph: 0800 666 2824
--	---

## NOTES


Recycling: Do not dispose of electrical appliances as unsorted municipal waste. Use separate collection facilities. Contact your local government for information regarding the collection systems available. If electrical appliances are disposed of in landfills or dumps, hazardous substances can leak into the ground water, polluting the food chain and damaging health and wellbeing. Polystyrene Disposal: The websites listed below can assist in the responsible disposal of EPS (Expanded Polystyrene) packaging products.

Australia: <https://recyclingnearyou.com.au/polystyrene/> and/or <http://epsa.org.au/>

© Glen Dimplex Australia. All rights reserved. Material contained in this publication may not be reproduced in whole or in part, without prior permission in writing of Glen Dimplex Australia.

**morphy richards®**

Glen Dimplex Australia Pty Ltd

8 Lakeview Drive

Scoresby VIC 3179

Phone: 1300 556 816

Email: [sales@glendimplex.com.au](mailto:sales@glendimplex.com.au)

Web: [www.morphyrichards.com.au](http://www.morphyrichards.com.au)

MRMPO12\_IM\_v5




[facebook.com/MorphyRichardsAUS](https://facebook.com/MorphyRichardsAUS)



[instagram.com/morphyrichardsau](https://instagram.com/morphyrichardsau)

## Documents / Resources

	<p><a href="#">morphy richards MRMPO12W Multi Function Oven</a> [pdf] Instruction Manual MRMPO12T, MRMPO12W, MRMPO12W Multi Function Oven, Multi Function Oven, Oven</p>
---	--

## References

- [Home - Expanded Polystyrene Australia](#)
- [Login • Instagram](#)
- [Homepage | Morphy Richards](#)
- [Recycling Polystyrene - Planet Ark Recycling Near You](#)