



Minimoog Model D Analog Synthesizer Instruction Manual

[Home](#) » [moog](#) » Minimoog Model D Analog Synthesizer Instruction Manual 

Contents

- [1 Minimoog Model D Analog Synthesizer](#)
- [2 Product Information](#)
- [3 Product Usage Instructions](#)
- [4 What You Will Need](#)
- [5 Using Instructions](#)
- [6 Assembly Instructions](#)
- [7 Hand-Built to Last a Lifetime](#)
- [8 Documents / Resources](#)
- [9 Related Posts](#)



Minimoog Model D Analog Synthesizer



Product Information

The Minimoog Model D is a synthesizer that is hand-built to its original factory specifications at the Moog factory in Asheville, North Carolina. It is made of high-quality materials and features identical component placement and

through-hole design of the beloved 1970s Minimoog Model D. The synthesizer is housed in a hand-finished aluminum chassis and secured to a handcrafted Appalachian hardwood cabinet.

Product Usage Instructions

1. Download and print templates A, B, and C from the user manual.
2. Cut out templates A, B, and C along the pink lines.
3. Crease and fold along each blue dotted line on all 3 templates.
4. Starting with template A, the Model D panel, tape or glue the tabs together to form a box. Leave the brown colored tab at the bottom loose for the moment.
5. Do the same with template C which will form the body and keyboard of your paper Model D. Keep the flap directly behind the keyboard loose and leave this tab unattached.
6. You now have two constructed pieces, the panel and the body, as well as the panel's kick-stand (template B).
7. Attach the flap at the bottom of the synthesizer panel to the loose flap behind the keyboard on the body component. This connection will allow for the panel to hinge in alignment with the body.
8. Take the kick-stand (template B) and attach it to the bottom of the opening of the body cavity.
9. Now, attach the top of the kickstand to the back panel of the synthesizer.

Once you have completed these steps, your Minimoog Model D synthesizer is ready to use. Enjoy!

What You Will Need

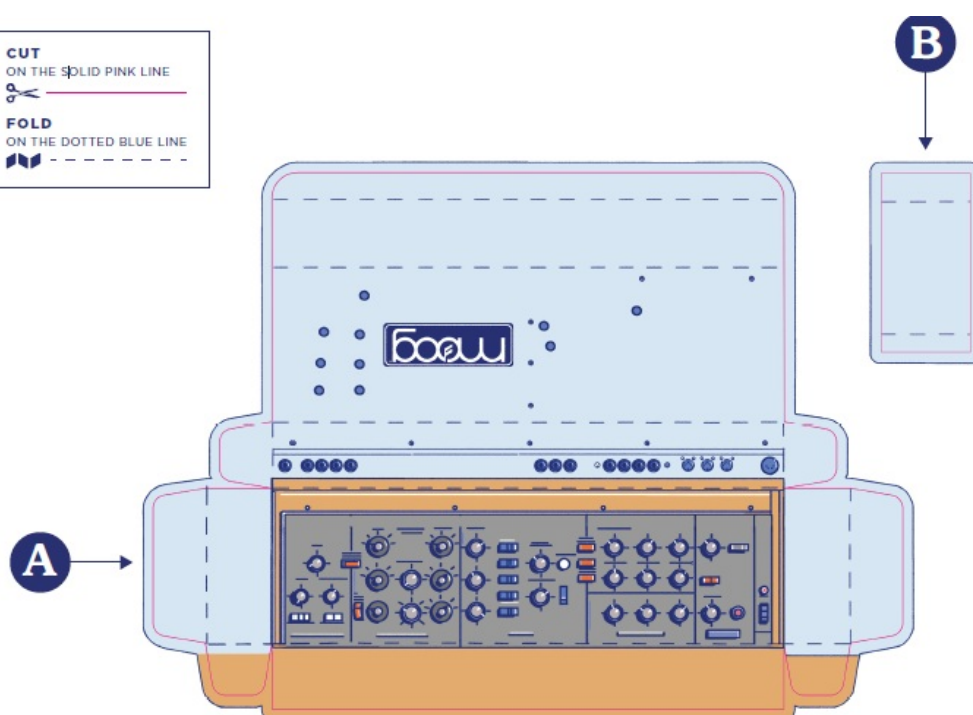
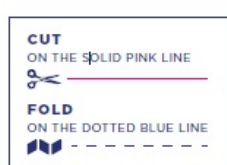
- TEMPLATES A, B, AND
- ASSEMBLY INSTRUCTIONS
- A PAIR OF SCISSORS OR AN X-ACTO KNIFE
- If using x-Acto knife a cutting mat and straight-edge can be helpful
- TRANSPARENT TAPE OR PREFERRED STICKY SUBSTANCE
- TIME, PATIENCE, AND A SENSE OF WONDER AND DISCOVERY
- WATER, GOTTA STAY HYDRATED!
- BACKGROUND MUSIC
- Check out Moog's Minimoog Model D playlist on Spotify.



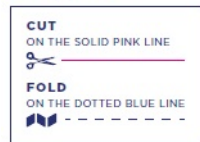


Using Instructions

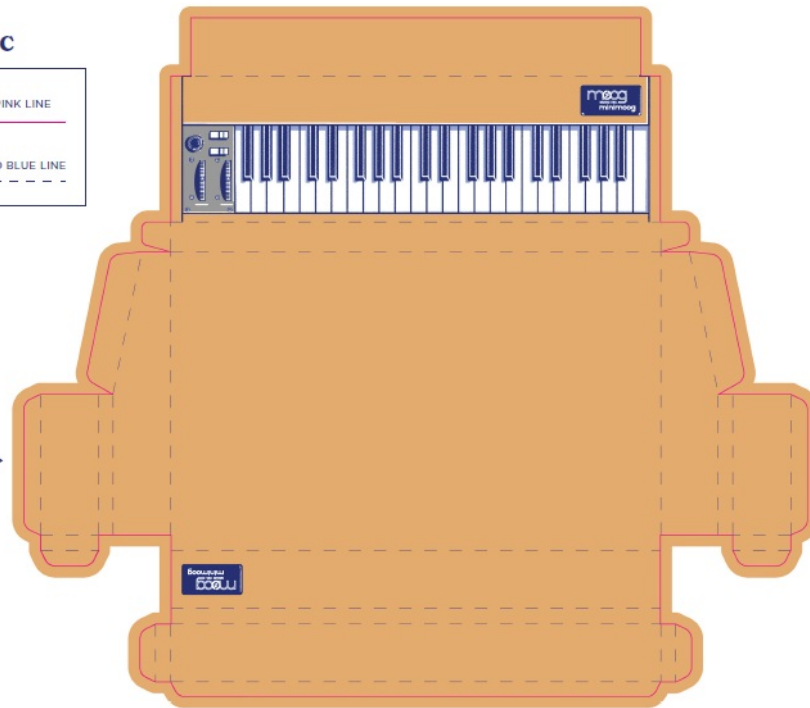
Template A+B



Template C

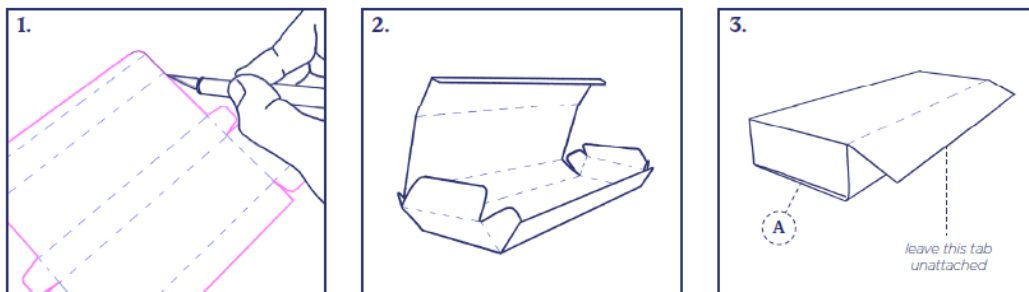


C →

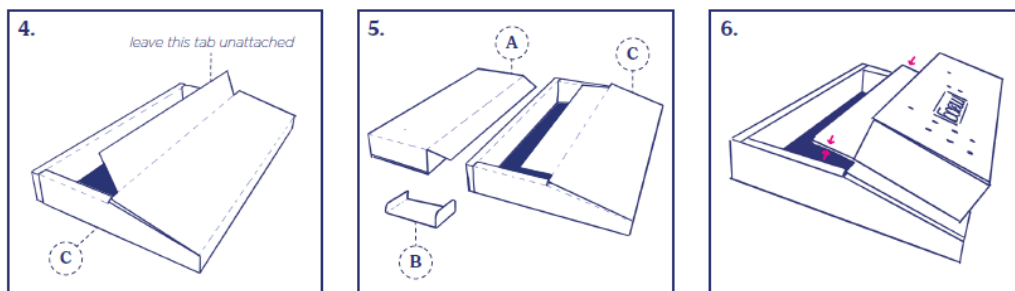


Assembly Instructions

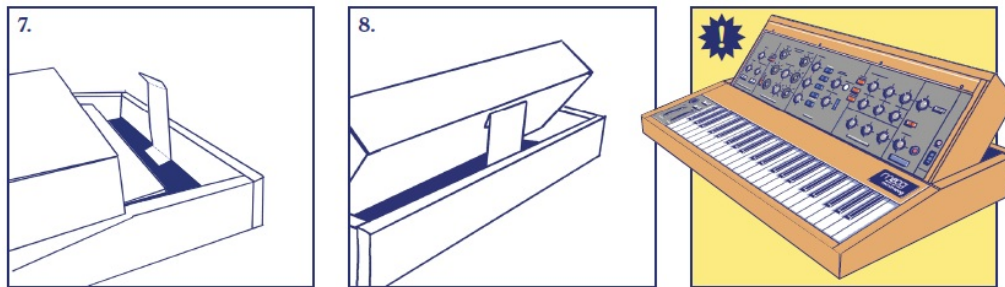
1. Cut-out templates A, B, and C (on pages 3 and 4) along the pink lines.
2. Crease and Fold along each blue dotted line on all 3 templates.
3. Starting with template A, the Model D panel, tape or glue the tabs together to form a box. Leave the brown colored tab at the bottom loose for the moment.



4. Do the same with template C with will form the body and keyboard of your paper Model D. Keep the flap directly behind the keyboard loose.
5. You now have two constructed pieces, the panel and the body, as well as the panel's kick-stand (template B).
6. Attach the flap at the bottom of the synthesizer panel to the loose flap behind the keyboard on the body component. This connection will allow for the panel to hinge in alignment with the body.



7. Take the kick-stand (template B) and attach it to the bottom of the opening of the body cavity.
8. Now, attach the top of the kickstand to the back panel of the synthesizer.



Hand-Built to Last a Lifetime

At the Moog factory in Asheville, North Carolina, every Minimoog Model D synthesizer is built by hand to its original factory specifications. Placing the utmost importance on high-quality materials, all components are carefully sourced and crafted to capture the indescribable feeling of the original Minimoog Model D. Each unit that travels through Moog's production floor sees identical component placement and through-hole design of the beloved 1970s Minimoog Model D in a hand-finished aluminum chassis, secured to a handcrafted Appalachian hardwood cabinet.



"This attention to detail in materials and build allows us to connect directly to the legacy and character of this legendary instrument. The Minimoog Model D is more than just a collection of circuits in a box—it's a true musical instrument that is a joy to program and play. Bob [Moog] always recognized the importance of an instrument's feel, and we've gone to great lengths to honor his practices through the re-introduction and manufacture of this beautiful synthesizer." Steve Dunnington, VP of Product Development at Moog Music



We hope you enjoyed building your own Minimoog Model D at home!

Documents / Resources



[moog Minimoog Model D Analog Synthesizer](#) [pdf] Instruction Manual
Minimoog Model D, Analog Synthesizer, Minimoog Model D Analog Synthesizer, Synthesizer