



MOOG GR1200-E 1200ml Gravity Enteral Delivery Set Instructions

[Home](#) » [moog](#) » MOOG GR1200-E 1200ml Gravity Enteral Delivery Set Instructions 

MOOG GR1200-E 1200ml Gravity Enteral Delivery Set Instructions



Contents

1 INSTRUCTIONS FOR USE

2 WARNINGS AND PRECAUTIONS

3 Customer Service

4 Documents / Resources

4.1 References

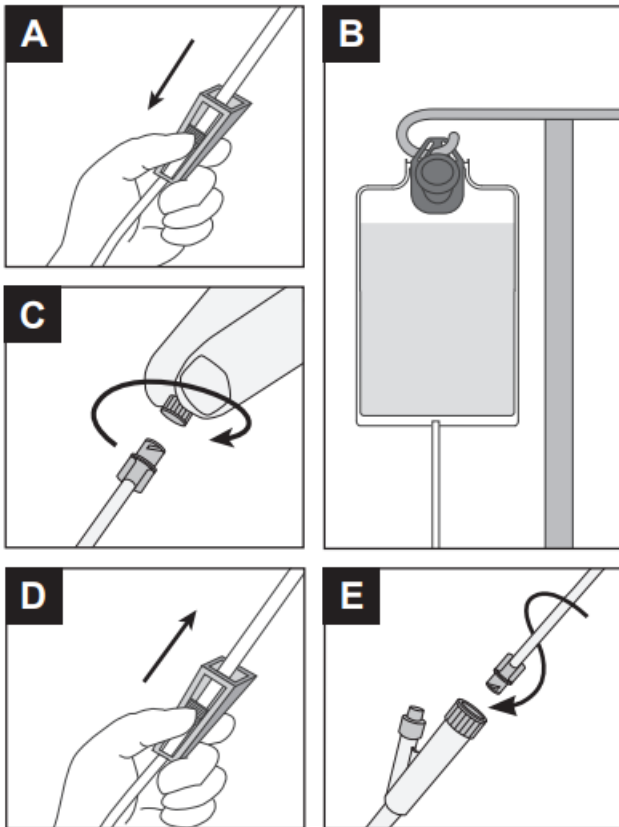
5 Related Posts

INSTRUCTIONS FOR USE

To ensure proper operation of the delivery set, please follow all instructions and illustrations below.

1. Close roller clamp (image A).
2. Fill feeding bag to desired level and close cap.
3. Hang bag on IV pole with built-in hanger on bag (image B).
4. Unscrew the protective cover counterclockwise from the ENFit connector (image C).
5. Open roller clamp and fill set to expel air in tubing (image D). Close roller clamp.
NOTE: Do not overfill drip chamber.
6. Screw the ENFit connector clockwise into feeding tube firmly by hand (image E). Be careful not to overtighten.
7. Adjust roller clamp until the desired flow rate is achieved.

NOTE: Drip chamber will produce approximately 30 drops/ml.



GRAVITY FEED ONLY

WARNINGS AND PRECAUTIONS

- Follow manufacturer guidelines related to maximum nutrition hang time.
- Device contains small parts. Dispose of or store connector cap when not in use to avoid choking hazard for children under 3 years.
- Avoid leaving tubing and cords where infants, children, or those deemed at high risk for medical line entanglement, can become entangled. Be aware that if these items become wrapped around a patient's neck, there is an increased risk of strangulation or death. Caregivers of patients who are at risk for entanglement should discuss with their health care provider how to properly manage their lines and properly monitor patients based on their needs while in use.



WARNING: This product can expose you to chemicals including vinyl chloride, which is known to the State of California to cause cancer. For more information go to www.P65Warnings.ca.gov

THE INFINITY DELIVERY SET IS INTENDED TO CONNECT TO ENTERAL FEEDING TUBES

NOT MANUFACTURED WITH NATURAL RUBBER LATEX

DELIVERY SETS ARE MADE WITH MATERIALS THAT DO NOT CONTAIN BISPHENOL A (BPA) IN THE FLUID PATH.



THIS DEVICE
IS NOT MADE
WITH DEHP



REPLACE
EVERY
24 HOURS



NOT FOR
IV USE



ONLY

© 2022 Zevox, Inc. ENFit® is a registered trademark of GEDSA. Moog® is a registered trademark of Moog, Inc. For patent information, visit www.moogmedical.com/patents. Assembled in Costa Rica.
Manufactured by Zevox, Inc. LS-82826 Rev. B

Customer Service

Zevox, Inc. Salt Lake City, Utah 84123 USA

USA toll free: (800) 970-2337

tel: (801) 264-1001

www.infinityfeedingpump.com



Documents / Resources



[MOOG GR1200-E 1200ml Gravity Enteral Delivery Set](#) [pdf] Instructions
GR1200-E, 1200ml Gravity Enteral Delivery Set, 1200ml Gravity Enteral, GR1200-E, Delivery Set, 1200ml Gravity

References

- [🌐 Enteral Feeding - Infinity Feeding Pumps - Moog Medical](#)

-  [Patent Information - Moog Medical](#)
-  [P65Warnings.ca.gov](#)

Manuals+.