



moofit CS8 Cycling Cadence Speed Sensor User Manual

[Home](#) » [moofit](#) » moofit CS8 Cycling Cadence Speed Sensor User Manual 

Contents

- 1 moofit CS8 Cycling Cadence Speed Sensor
- 2 Speed sensor
 - 2.1 Product Accessories
 - 2.2 Basic Parameters
 - 2.3 Installation for speed mode
- 3 Cadence sensor
 - 3.1 Product Accessories
 - 3.2 Basic Parameters
 - 3.3 Installation for cadence mode
- 4 Documents / Resources
 - 4.1 References
- 5 Related Posts

MOOFIT

moofit CS8 Cycling Cadence Speed Sensor



Speed sensor

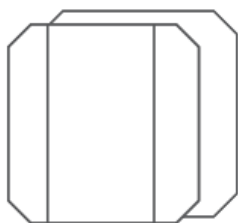
Product Introduction

Thank you for purchasing our wireless dual-mode cycling sensor. This product is one of the bicycle peripheral products of our company, one is speed sensor and the other is cadence sensor. This user manual will help you better use the product, please keep it for reference.

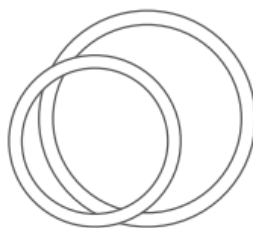
Product Accessories



Head unit



Rubber mat
(curved)



Band
(large, small)

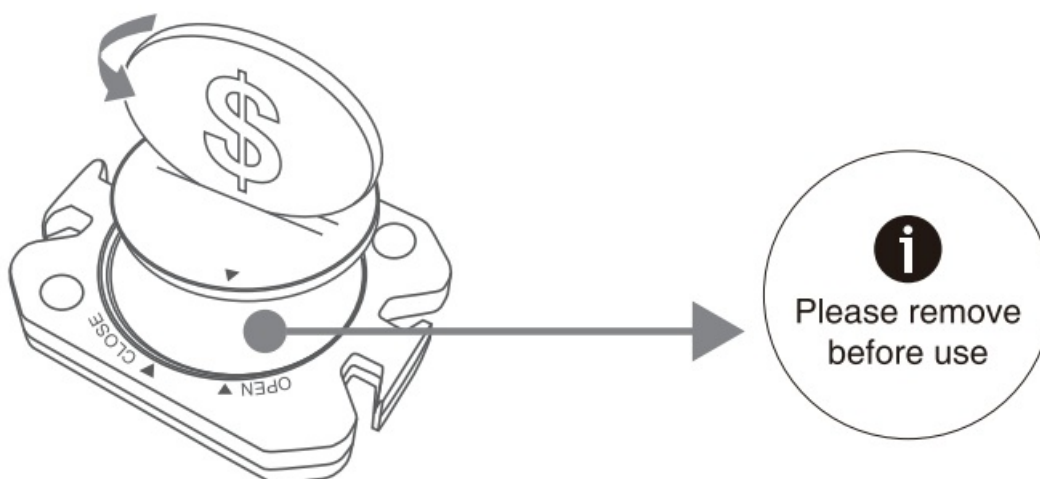


User manual

Basic Parameters

Product size: 38 x 30 x 10 mm	Communication: ANT+ /Sm BLE/10m
Product net weight: 9g	
Electrical source: CR2032 220mAh	
Battery life: 320h for speed mode	Measurement of extreme value: 120km/h for speed
Waterproof grade: IP67	Outer case: ABS
Working temperature: -20C~60C	Color: Black and orange

Remove the insulation sheet before use

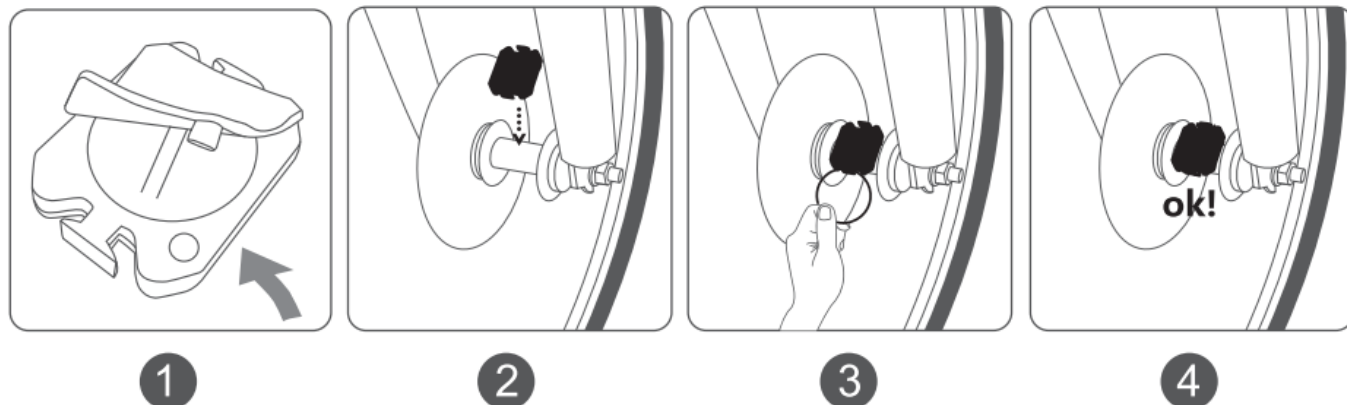


Twist the battery door with a coin in OPEN direction, open the battery door, remove the battery. After putting in the

battery, the light goes on.

Installation for speed mode

Buckle the curved rubber mat onto the back of the sensor, then bind the sensor with the large rubber band onto the wheel axle.



Compatible with various App



XOSS



Openrider



Zwift



Wahoo Fitness

Note: The copyrights of the App icons showed above reserved by the App development corporation.

Disclaimer

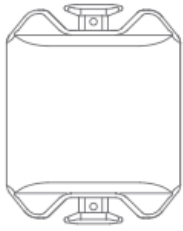
- The information in this manual is for your reference only. The product described above may be subject to alteration owing to the manufacturer's continuing research and development plans, without making an announcement in advance.
- We shall not make any statement or warranty with respect to this manual or the products described herein.
- We shall not bare any legal responsibility for any direct or indirect, accidental or special damages, losses and expenses arising from or in connection with this manual or the products described herein.

Cadence sensor

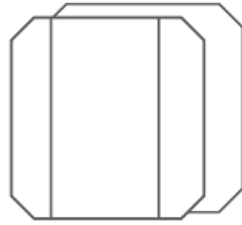
Product Introduction

Thank you for purchasing our wireless dual-mode cycling sensor. This product is one of the bicycle peripheral products of our company, one is speed sensor and the other is cadence sensor. This user manual will help you better use the product, please keep it for reference.

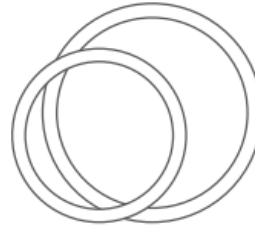
Product Accessories



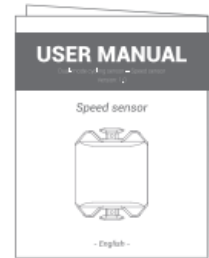
Head unit



Rubber mat
(flat)



Band
(large, small)

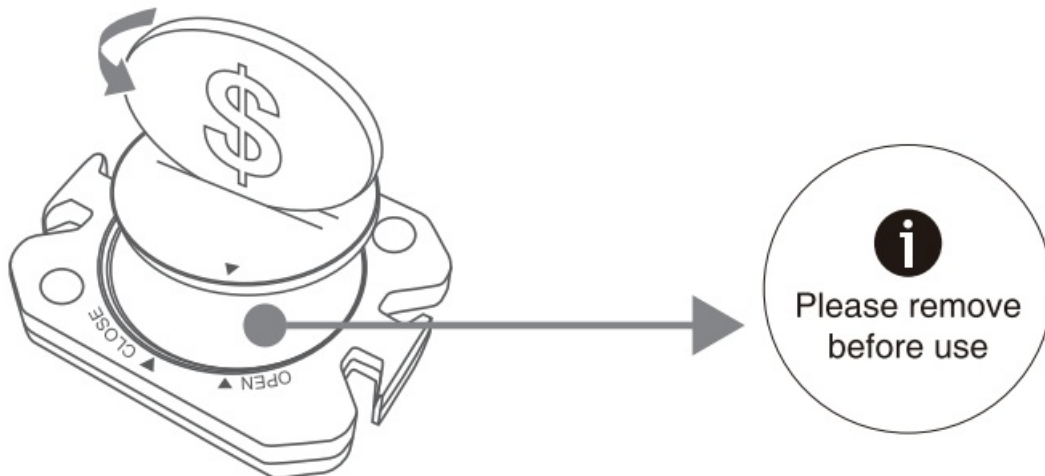


User manual

Basic Parameters

Product size: 38 x 30 x 1 O mm	Communication: ANT+ /Sm BLE/IOM
Product net weight 9g	
Electrical source: CR2032 220mAh	
Battery life: 320h for cadence mode	Measurement of extreme value: 300rpm for cadence
Waterproof grade: IP67	Outer case: ABS
Working temperature: -20 C ~60 C	Color: Black and orange

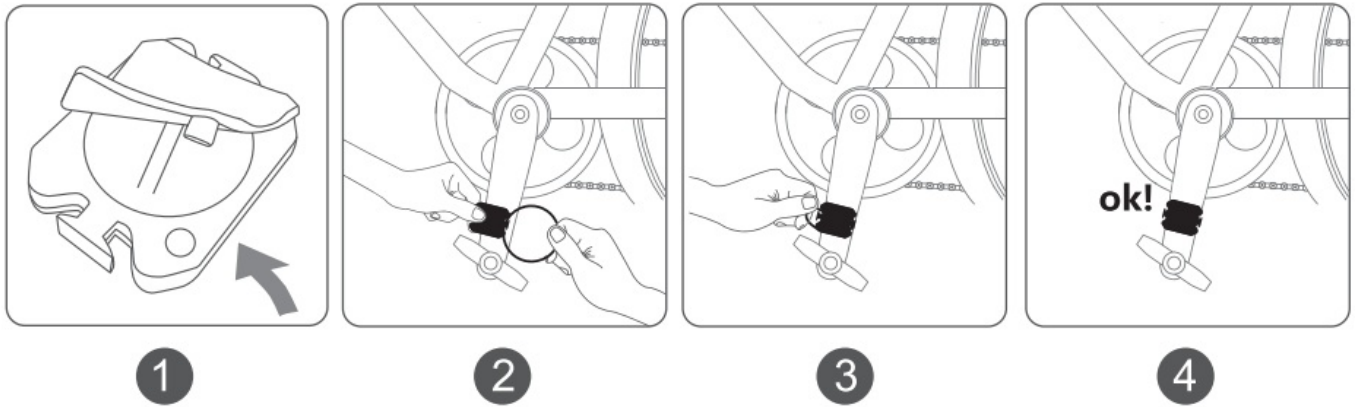
Remove the insulation sheet before use



Twist the battery door with a coin in OPEN direction, open the battery door, remove the battery. After putting in the battery, the light goes on.

Installation for cadence mode

Buckle the flat rubber mat onto the back of the sensor, then bind the sensor with the small rubber band onto the pedal crank.



Compatible with various App



XOSS



Openrider



Zwift



Wahoo Fitness

Note: The copyrights of the App icons showed above reserved by the App development corporation.

Disclaimer

- The information in this manual is for your reference only. The product described above may be subject to alteration owing to the manufacturer's continuing research and development plans, without making an announcement in advance.
- We shall not make any statement or warranty with respect to this manual or the products described herein.
- We shall not bare any legal responsibility for any direct or indirect, accidental or special damages, losses and expenses arising from or in connection with this manual or the products described herein.

Documents / Resources

	<p>moofit CS8 Cycling Cadence Speed Sensor [pdf] User Manual</p> <p>CS8 Cycling Cadence Speed Sensor, CS8, Cycling Cadence Speed Sensor, Cadence Speed S ensor, Speed Sensor, Sensor</p>
--	--

References

- [User Manual](#)