

MOOER
SD101 Intelligent
Amplifier



MOOER SD101 Intelligent Amplifier Owner's Manual

[Home](#) » [Mooer](#) » MOOER SD101 Intelligent Amplifier Owner's Manual 

Contents

- [1 MOOER SD101 Intelligent Amplifier](#)
- [2 FEATURES](#)
- [3 LAYOUT](#)
- [4 CONNECTIONS](#)
- [5 INSTRUCTIONS OF TOP PANEL](#)
- [6 MOOER F4 WIRELESS
FOOTSWITCH](#)
- [7 SPECIFICATIONS](#)
- [8 Documents / Resources](#)
 - [8.1 References](#)

MOOER

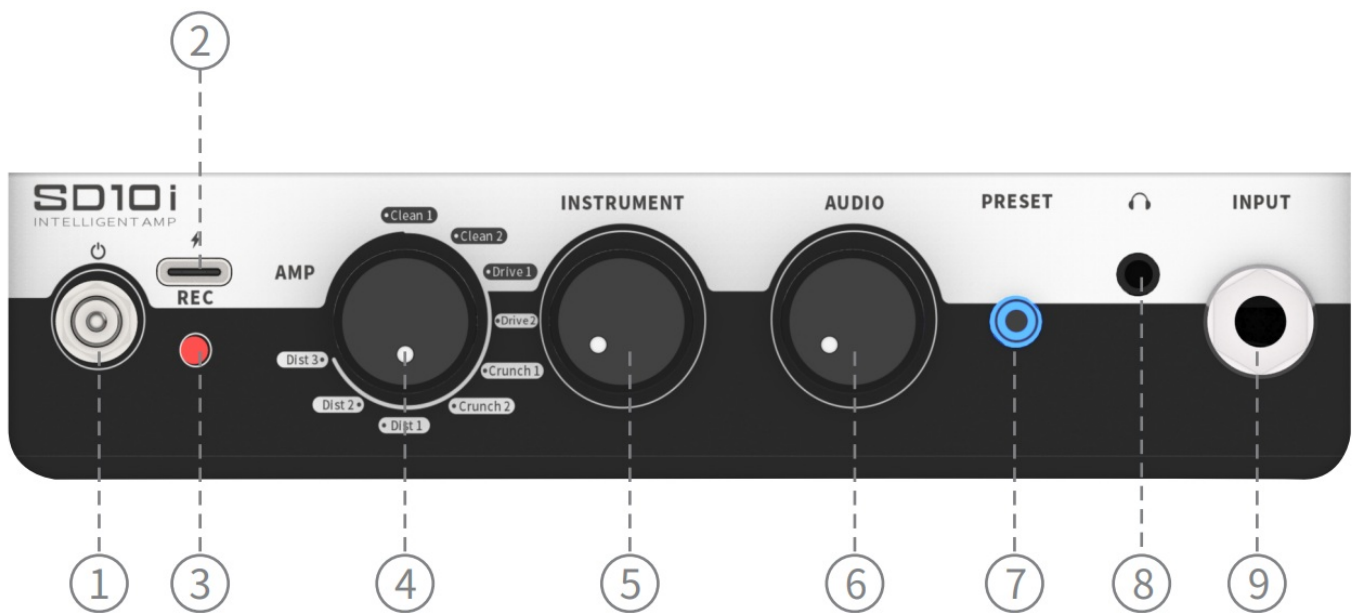
MOOER SD101 Intelligent Amplifier



FEATURES

- Digital modeling amplifier based on the MOOER iAMP system.
- 52 amp models created with MNRS technology, as well as 49 effects.
- 10-watt D stereo amplifier with dual two-inch loudspeakers.
- 40 drum machine varieties and 10 metronomes.
- 80-second looper that can sync with the drum machine.
- Comes with a tuner for tuning your instrument easily.
- A rechargeable battery allows you to play at any time and anywhere
- Specialized iAMP App for complete effects editing, firmware updates, and the ability to upload /download tones from MOOER Cloud.
- Support for wireless footswitch control.
- Bluetooth 5.0 high-quality audio input for audio playback or practice.
- USB-C port for high-quality audio recording and playback.

LAYOUT



1. Power Switch

Toggle Up/Down to power On/Off the device

2. USB-C Port

Connect to a mobile device for OTG direct recording, audio playback, and power charging for your device.

3. Power Indicator

Indicate the On/Off status of the device. When the indicator is On, the color will show the battery life: GREEN for >50%; YELLOW for 25~50%; RED for <25% battery, it is recommended to charge your device immediately as the battery is about to run out.

4. AMP Selector

9 different amp models to select from, rotate to select different models quickly.

5. INSTRUMENT

Master volume level control. The knob controls the INSTRUMENT bar in the App interface. Sometimes the value it shows could be different if you move the INSTRUMENT bar in the App directly.

6. AUDIO

Volume level control for the Bluetooth audio playback, and OTG audio playback.

7. PRESET

LED button. Press the knob to switch between 4 presets in the current bank. The LED color indicates different preset patches.

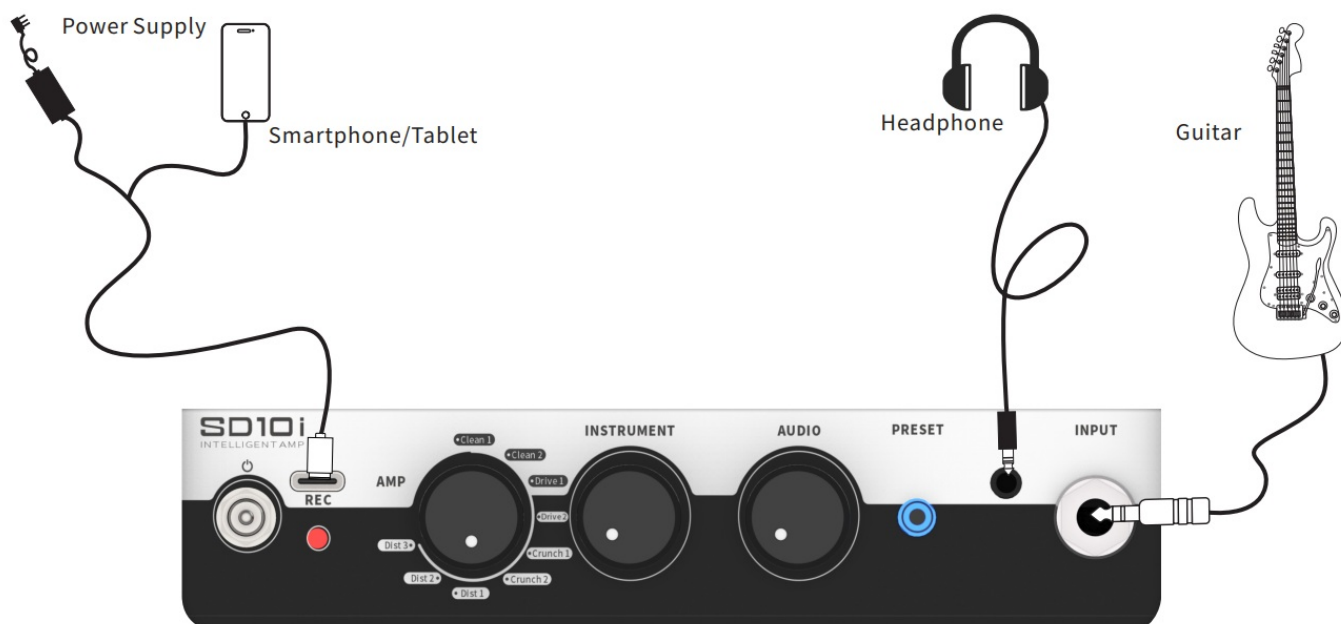
8. HEADPHONE

A 3.5mm TRS headphone jack, connects to a headphone.

9. INPUT Jack

6.35mm TS instrument input jack, connects to a guitar or other instrument.

CONNECTIONS



Notes: When the device is connected to a headphone, the speaker will be muted.

QUICK START

1. Power On

To avoid the damage caused by the high-volume level in a short time, please rotate the INSTRUMENT and AUDIO to the minimum value, then toggle On the device.

2. Connect to Instrument

Use an instrument cable that connects your guitar to the input jack of SD10i, power On the device, wait for a few seconds until it boots up, then rotate the INSTRUMENT knob to a proper value.

3. Connect to Bluetooth Device

Open the Bluetooth list of your mobile device, select "SD10i Audio" and confirm connecting, after it is connected successfully, you can play the audio tracks from the mobile device via the SD10i. You can adjust the volume level of the audio tracks to a proper value via the AUDIO knob.

INSTRUCTIONS OF TOP PANEL

1. Preset Switching

SD10i has 10 preset banks, each bank includes 4 preset patches. When the device is not connected to the camp App, you can preset the PRESET button to switch between 4 presets in the current selected bank.

2. AMP Switching

Rotate the AMP knob to switch between 9 different amp models, which include 2 Clean channels, 2 Overdrive channels, 2 Crunch channels, and 3 Distortion channels.

3. Preset Saving

If you are satisfied with the current preset, press and hold the PRESET button, the button LED will flash quickly to confirm saving.

MOOER iAMP APP



1. Download the MOOER iAMP App

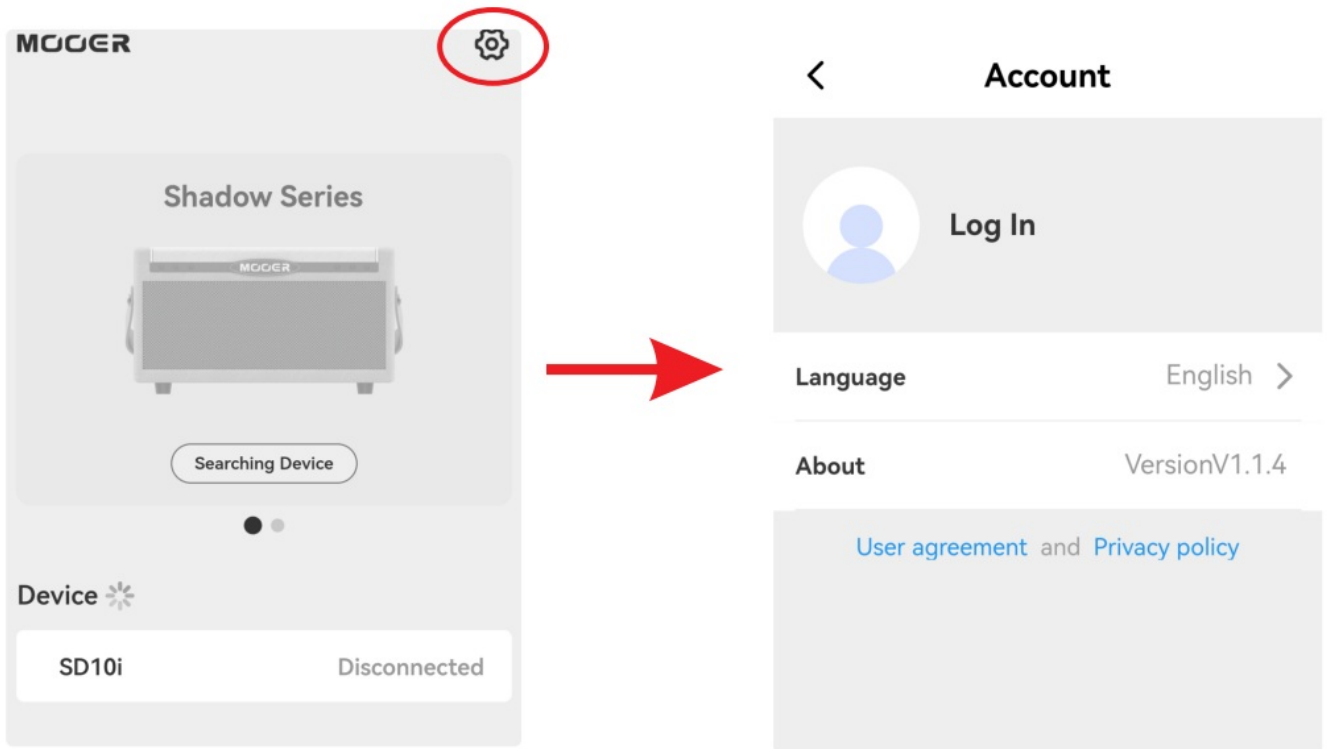
Please enter the Play Store or App Store for downloads.

2. Connection

Open the iAMP App, and select SD10i on the login page. Enter the effect parameter editing menu, click on the Bluetooth icon, and select your device in the pop-up list (SD10i is the default name). Then the App will start to pair with your device, the connection is set up successfully after the loading bar completes.

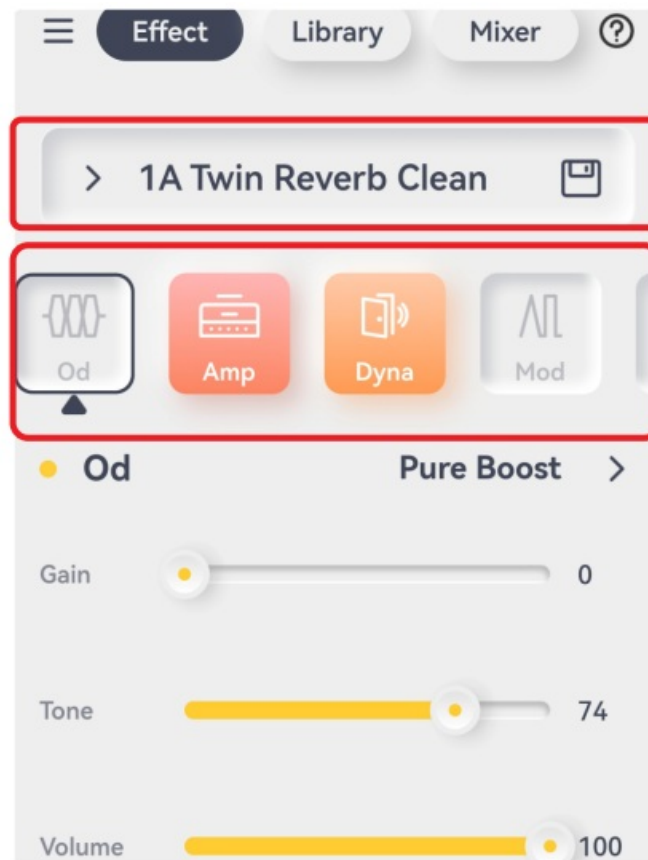
Registration

Before the first time of use, it is recommended to register an account for the Cloud function, so that you can download presets made by users from all over the world, or upload your favorite tone to other users via the Cloud.



preset selection/editing/saving

Click on the preset name, and the preset list will pop up. Click on any other preset name to switch to a different preset. Click on an effect module, and select different types of effects in the effect area below. Slide the parameter bar to edit the parameter values. Click on the selected module again to turn it On/Off. Press and hold a module to drag the module to change the order in the effect chain. Click the SAVE icon to save the change.




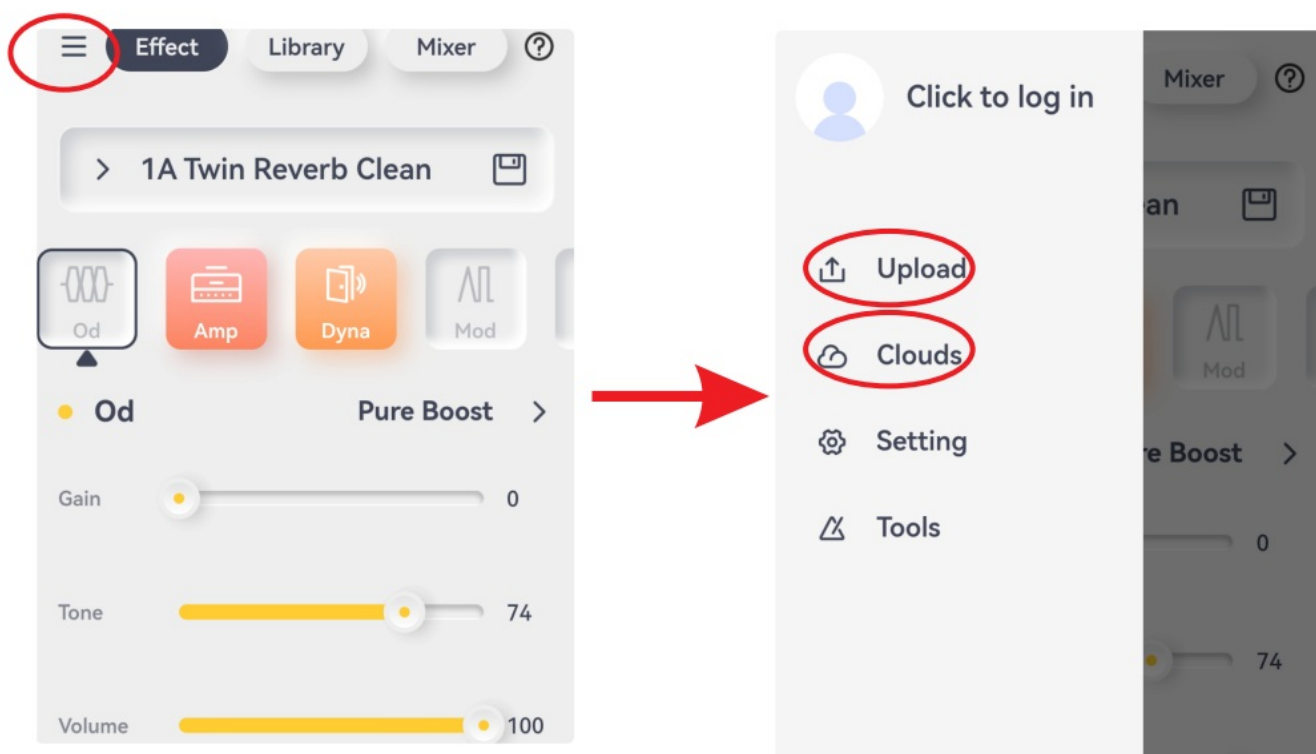
Upload/Download

Tones via Cloud The Cloud platform requests registration for use.

Download: Click on the icon at the top-left corner, and select CLOUD to enter the Cloud platform. You can utilize

the filter to get the preset you want quickly. Click on the PLAY icon to try it.

Upload: Select a preset patch, click on the  icon at the top-left corner, and select UPLOAD. Then fill in the information of your preset, select a proper music category, and confirm uploading.



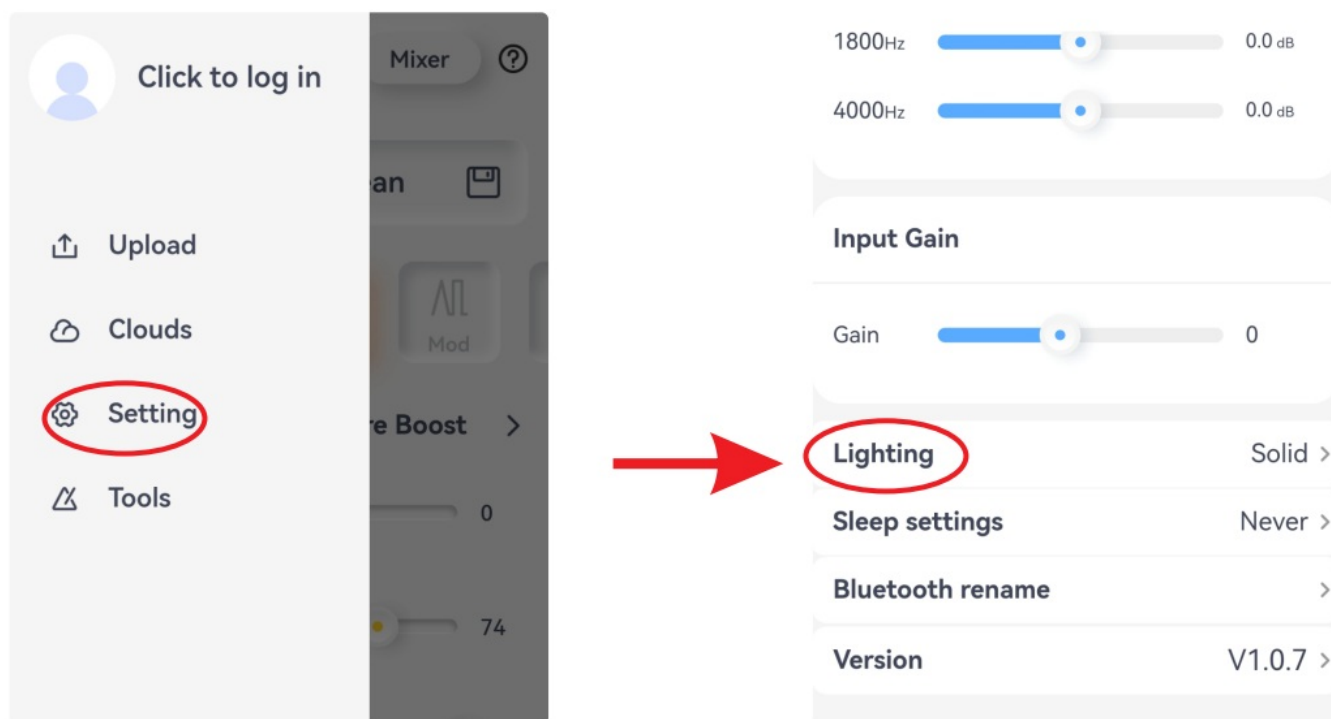
Ambient Light

SD10i has an ambient light on the front panel, the user can set the working mode and color of it in the App. Click on the icon at the top-left corner, and select SETTING-AMBIENT LIGHT to enter the settings menu.

Off: Turn Off the ambient light.

Still: The ambient light will stay on the color you selected.

Dynamic: The ambient light will change automatically between different color areas as a loop.



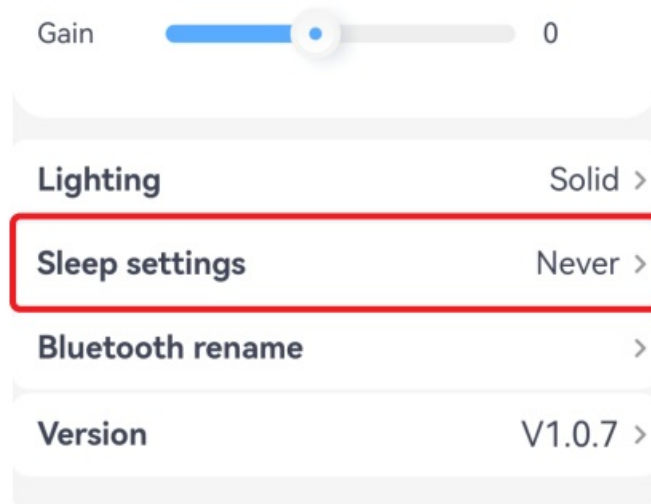
Sleep Mode

To avoid the power consumption caused by not being powered Off when the device is idle, we designed the sleep mode for the SD10i.

Click on the icon at the top-left corner, and select SETTING-SLEEP MODE to enter the menu. Select a proper time, the device will switch to sleep mode for power saving if it is idle after the time you set. The power indicator will flash slowly, and the PRESET LED, TAP will be Off. Rotator press any knobs to wake it up.

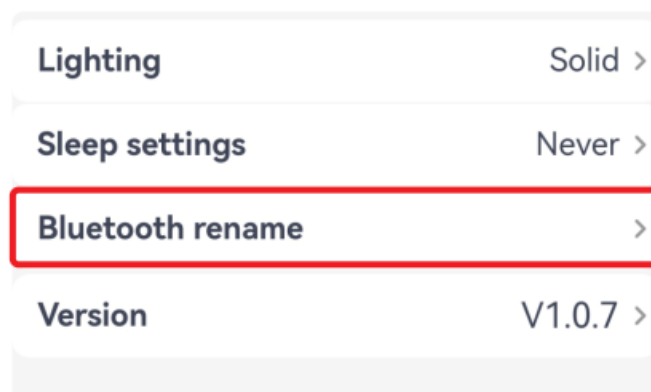
Notes: In the situations below, the device will not switch to sleep mode even if the user has set up the time properly.

- A. Either the drum machine, tuner, or looper is working.
- B. Looper has recorded tracks. (To avoid the data loss of the looper)
- C. The device is charging.
- D. There is always an input signal detected in the input jack.



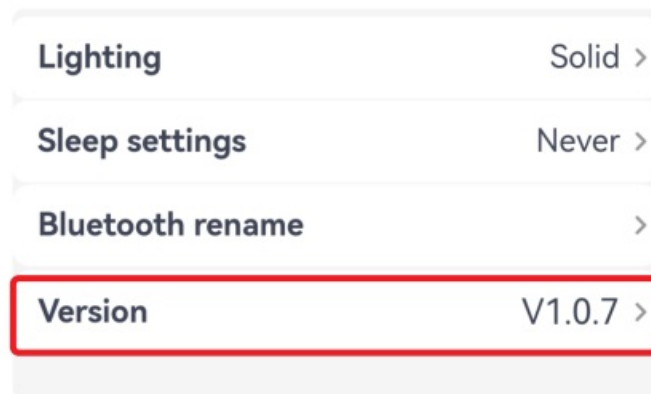
Firmware Update

SD10i supports firmware updating via the mobile App. When any new firmware is available (usually after you update the App), a firmware update hint window will pop up if you connect the device to the App. Click to confirm updating, the device will be booted to update mode. Please wait for a few minutes until it completes and reboot the device automatically.



Factory Reset

Click on the icon at the top-left corner, and select the SETTING-VISION to do the factory reset. The user data will be deleted completely and the device will be reset to the factory setting.



MOOER F4 WIRELESS FOOTSWITCH

SD10i is compatible with the MOOER F4 wireless footswitch for control expansion, including the preset patch switching, drum machine/looper control, tuner, and the tap tempo speed/time setting.

Pairing Before the First Time of Use

Turn On the F4, press and hold the A & C footswitch to enter the pairing mode, the footswitch LED of F4 will flash, then click on the wireless footswitch icon to start pairing. After the pairing finishes, the screen of F4 will show the number of the current selected preset patch.

Preset Switching

Press footswitch A/B/C/D to switch between the preset patches in the current bank, press the A & B footswitch to scroll up between banks; press the C & D footswitch to scroll down between banks.

TAP TEMPO

If any delay module is On, the F4 footswitch LED will blink according to the delay time. Press the footswitch of the current selected preset patch several times to set up the delay time.

TUNER

Press and hold any footswitch of F4 to enter the tuner mode. The App will also enter the tuner page if the device is connected to the App. Or you can refer to the screen of F4 for tuning without connecting to the App. The left part of the screen shows the current playing note.

The right part of the screen shows if it is in tune or not. Stay 0 for being in tune; spinning anticlockwise for flat; spinning clockwise for sharp.

Drum Machine/Loop Control

SD10i has an 80-second looper and 40 drum grooves, and the looper can sync with the drum machine for use. You can utilize the F4 for a better experience.

Enter the Looper & Drum Machine Sync Mode

In the preset switching mode, press the B & C footswitch, and the screen of F4 shows LD for the Looper and the Drum Machine mode. Press the B & C footswitch again to get back to the preset select mode.

Looper & Drum Machine Control

In the looper & drum machine mode, the footswitches A and B are for the looper control.

- (A: REC/PLAY/DUB; B: STOP/press and hold for CLEAR)
- C/D for the drum machine control
- (C: TAP to set up the speed of the drum machine; D: play/stop the drum machine)

In the LD status, press and hold the C footswitch to enter the groove select mode, the screen shows the current selected groove number. Press the C or D footswitch to scroll up/down between grooves. If the F4 is idle for a few seconds, this mode will quit automatically.

OTG RECORDING/PLAYBACK

SD10i supports OTG audio recording directly through mobile devices via the USB-C port. Please purchase the OTG cable that can work with your mobile device (USB-A female to Lightning, or USB-A to USB-C cable), combining the OTG cable with the USB-A to USB-C cable for use. You can also use the USB-C to USB-C cable, or USB-C to Lightning cable for use.

TONE

OD		
serial number	name	serial number
1	Pure Boost	Based on MOOER@ Pure Boost effect
2	Flex Boost	Based on MOOER@ Flex Boost effect
3	Tube DR	Based on BK.Butler@ Tubedriver overdrive effect
4	808	Based on Ibanez@ TS808 overdrive effect
5	Gold Clon	Based on Klon Centaur@ Gold overdrive effect
6	D-Drive	Based on Barber@ Direct Drive overdrive effect
7	Jimmy OD	Based on Paul Cochrane@ Timmy OD overdrive effect
8	Full DR	Based on Fulltone@ Fulldrive 2 overdrive effect
9	Beebee Pre	Based on Xotic BB Preamp Overdrive distortion effect
10	Beebee	Based on Xotic@ BB Plus overdrive distortion effect
11	Black Rat	Based on Proco@ Rat distortion effect
12	Grey Faze	Based on Dunlop@ Fuzz Face fuzz effect
13	Muffy	Based on EH@ Big Muff fuzz effect
14	Full DS	Based on Fulltone GT-500 distortion effect
15	Shred	Based on Marshall@ Shred Master distortion effect
16	Riet	Based on Suhr@ Riot distortion effect
18	MTL Zone	Based on Boss@ Metal Zone effect
19	MTL Master	Based on Digitech METAL MASTER distortion effect
20	Obsessive Dist	Based on Fulltone@ OCD distortion effect

AMP		
serial number	name	serial number
1	65 US DLX	Based on Fender@65 Delux Reverb preamp module
2	65 US TW	Based on Fender@65 Twin Reverb preamp module
3	59 US Bass	Based on Fender@ 59 Bassman preamp module
4	US Sonic	Based on Fender@ Super Sonic preamp module
5	US Blue CL	Based on Fender@ Blues Deluxe preamp module clean channel
6	US Blue OD	Based on Fender@ Blues Deluxe preamp module overdrive channel
7	E 650 CL	Based on ENGL@ E650 preamp module clean channel
8	Powerbell CL	Based on ENGL@ E645 preamp module clean channel
9	Blacknight CL	Based on ENGL@ E650 Blackmore Signature preamp module clean channel
10	Mark III CL	Based on Mesa/Boogie@ Mark III preamp module clean channel
11	Mark V CL	Based on Mesa/Boogie@ Mark V preamp module clean channel
12	Tri Rec CL	Based on Mesa/Boogie@ Triple Rectifier preamp module clean channel
13	Rockvrb CL	Based on Orange® Rockerverb Clean Channel
14	Dr Zee 18 JR	Based on Orange@ Dr Zee 18 JR preamp module clean channel
15	Dr Zee Reck	Based on DR.Z@ Z-Wreck preamp module
16	Jet 100H CL	Based on Jet City@ JCA100H preamp module clean channel
17	Jazz 120	Based on Roland@ JC120 preamp module
18	UK 30 CL	Based on Vox AC30 preamp module clean setup
19	UK 30 OD	Based on Vox AC30 preamp module overdrive setup

AMP		
serial number	name	serial number
20	HWT 103	Based on Hiwatt@ DR-103 preamp module
21	PV5050 CL	Based on Peavey@ 5150 preamp module clean channel
22	Regal Tone CL	Based on Tone King@ Falcon preamp module Rhythm channel
23	Regal Tone OD1	Based on Tone King@ Falcon preamp module Tweed channel
24	Carol CL	Based on Two Rock@ Coral preamp module clean channel
25	Cardeff	Based on Two Rock@ Cardiff preamp module
26	EV 5050 CL	Based on EVH@ 5150 preamp module clean channel
27	HT Club CL	Based on Blackstar@ HT Stage100 preamp module clean channel
28	Hugen CL	Based on Diezel@ Hagen preamp module clean channel
29	Koche OD	Based on Koch@ Powertone preamp module overdrive channel
30	J800	Based on Marshall@ JCM800 preamp module
31	J900	Based on Marshall@ JCM900 preamp module
32	PLX 100	Based on Marshall@ Plexi 100 preamp module
33	E650 DS	Based on ENGL@ E650 preamp module distortion channel
34	Powerbell DS	Based on ENGL@ E645 preamp module distortion channel
35	Blacknight DS	Based on ENGL@ 650 Blackmore preamp module distortion channel
36	Mark III DS	Based on Mesa/Boogie@ Mark III preamp module distortion channel
37	Mark V DS	Based on Mesa/Boogie@ Mark V preamp module distortion channel

AMP		
serial number	name	serial number
38	Tri Rec DS	Based on Mesa/Boogie@ Triple Rectifier preamp module distortion channel
39	Rockverb DS	Based on Orange@ Rockverb preamp module distortion channel
40	Citrus 30	Based on Orange@ AD30 preamp module
41	Citrus 50	Based on Orange@ AD50 preamp module
42	Slow 100 CR	Based on Soldano@ SLO 100 preamp module crunch channel
43	Slow 100 DS	Based on Soldano@ SLO100 preamp module distortion channel
44	Jet 100H OD	Based on Jet City@ JCA100 H preamp module overdrive channel
45	PV 5050 DS	Based on Peavey@ 5150 preamp module distortion channel
46	Regal Tone OD2	Based on Tone King@ Falcon preamp module Lead channel
47	Carol OD	Based on Two Rock@ Coral preamp module overdrive channel
48	EV 5050 DS	Based on EVH@ 5150 preamp module distortion channel
49	HT Club DS	Based on Blackstar@ HT Stage 100 preamp module distortion channel
50	Hugen OD	Based on Diezel@ Hagen preamp module overdrive channel
51	Hugen DS	Based on Diezel@ Hagen preamp module distortion channel
52	Koche DS	Based on Koch@ Powertone preamp module distortion channel

DYNA		
serial number	name	serial number
1	NG	Based on MOOER@ Nosie Killer noise gate
2	Comp	Based on MOOER@ Blue Comp compressor effect
3	Touch Wah	Based on MOOER@ Envelope fliter effect
4	Auto Wah	Based on MOOER@ WAH auto wah effect

MOD		
serial number	name	serial number
1	Phaser	liquid like phaser effect
2	Step Phaser	Based on square wave phaser effect
3	Flanger	Classic flanger effect
4	Jet Flanger	Based on the MOOER@ JET FLANGER
5	Tremlo	Tremolo effect with periodically changing volume level
6	Stutter	Stutter effect with periodically changing volume level
7	Vibrato	Vibrato effect with periodically changing pitch
8	Pitch Shift	Effect for changing the pitch
9	Rotary	Rotary effect
10	Ana Chorus	Warm analog like chorus effect
11	Tri Chorus	Modern multi chorus effect
12	Ring	Can produce the ring like tone
13	Q-Filter	Modulation filter effect
14	Lofi	Downsampling effect
15	Slow Gear	Slow pronunciation effect

DELAY		
serial number	name	serial number
1	Digital	Clear and precise digital delay effect
2	Analog	Classic warm analog like delay
3	Real Echo	Real space like delay effect
4	Tape	Vintage tape delay effect
5	Mod	Delay with modulation effect
6	Reverse	Delay with reversed signal

REVERB		
serial number	name	serial number
1	Room	Small room reverb
2	Hall	Concert Hall reverb
3	Plate	Studio style plate reverb
4	Spring	Vintage spring reverb tank
5	Mod	Reverb with modulation effect

SPECIFICATIONS


- Rates Power: 10-watt (5 watt * 2) class D amplifier
- Mono Stereo: Stereo
- Speaker: 2*2-inch customized full-range flat-response speaker
- Effect: 52 amp models, 49 effects (includes dynamic/distortion/overdrive/modulation/delay/reverb)
- Looper: 80-second stereo looper
- Bluetooth: Bluetooth audio playback and App control
- USB Audio: OTG audio recording, audio playback
- Input Jack: 1/4" audio input jack, 1 Meg ohm
- Headphone Jack: 1/8" audio input jack, 1 ohm
- Power Supply: 5V= 2A
- Battery Capacity: 3000mAh 7.4V 22.2Wh
- Dimensions: 233 x 115 x 140mm
- Weight: 1.95kg
- Accessories: USB-C to USB-A cable, Quick Guide, handle grip

www.mooeraudio.com

SHENZHEN MOOER AUDIO CO. LTD

5F Unit B Jinghang Building, Liuxian 3rd Road
 Bao'an 71 District, Shenzhen, China. 518133
 Tel: +86-0755-2163-6506

Documents / Resources

	BOOER SD101 Intelligent Amplifier [pdf] Owner's Manual SD101, SD101 Intelligent Amplifier, Intelligent Amplifier, Amplifier
---	--

References

- [User Manual](#)

[Manuals+](#), [Privacy Policy](#)

This website is an independent publication and is neither affiliated with nor endorsed by any of the trademark owners. The "Bluetooth®" word mark and logos are registered trademarks owned by Bluetooth SIG, Inc. The "Wi-Fi®" word mark and logos are registered trademarks owned by the Wi-Fi Alliance. Any use of these marks on this website does not imply any affiliation with or endorsement.