



MONTOLIT 300-70SL-MOB Modular Handling System For Slabs Installation Guide

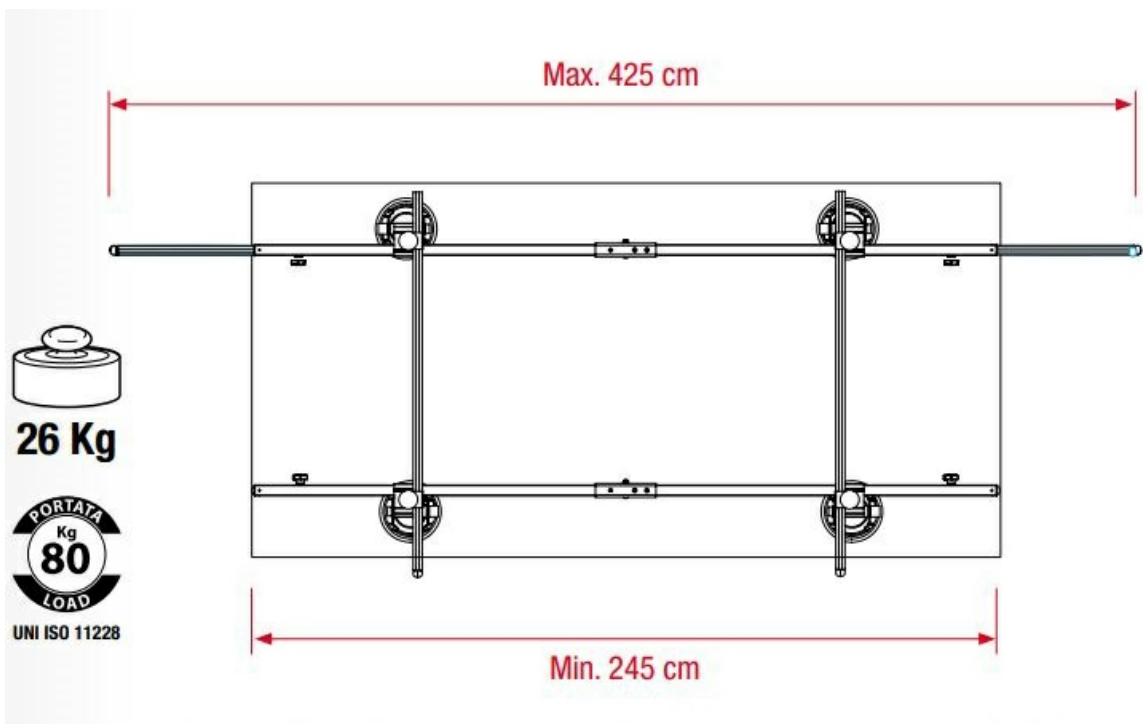
[Home](#) » [MONTOLIT](#) » MONTOLIT 300-70SL-MOB Modular Handling System For Slabs Installation Guide 

MONTOLIT 300-70SL-MOB Modular Handling System
For Slabs Installation Guide

SUPERLIFT^e-POWER
by **Brevetti MONTOLIT®**



MODULAR HANDLING SYSTEM FOR SLABS



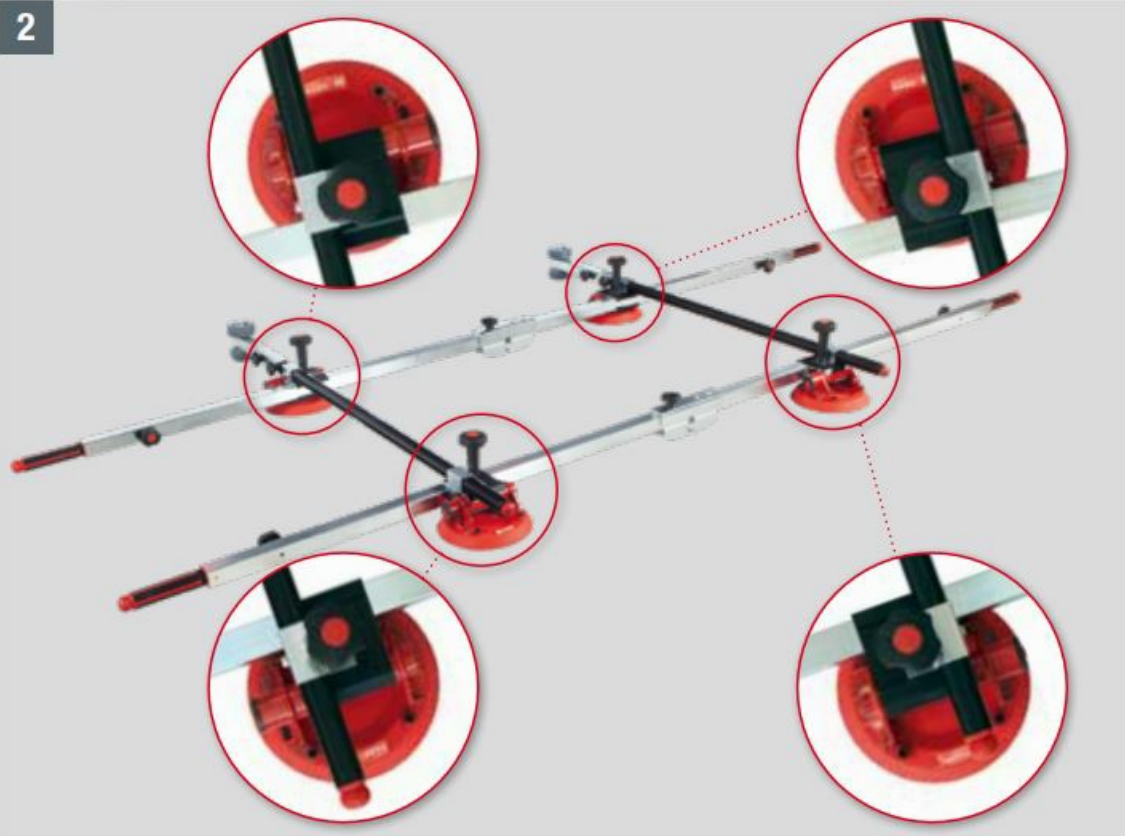
NOT FOR MOVEMENT WITH LIFTING EQUIPMENT



1



2



2



3



4^A

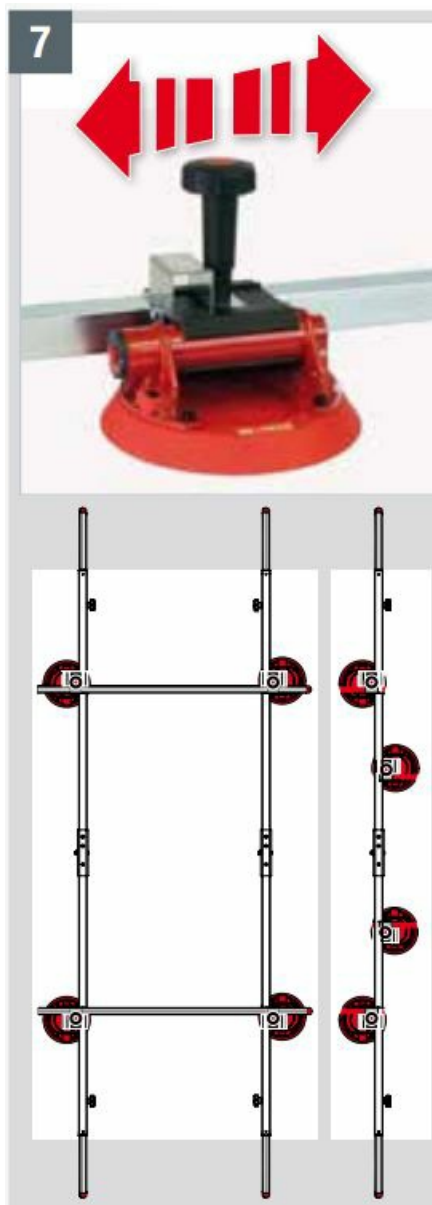




Clean the tile surface with water for better suction cup adhesion.



Adjust the guides and suction cups according to the size and shape of the tile to be handled and according to the different machining operations.



WARNING: always check the condition of the suction cups. Fully charge battery before use.

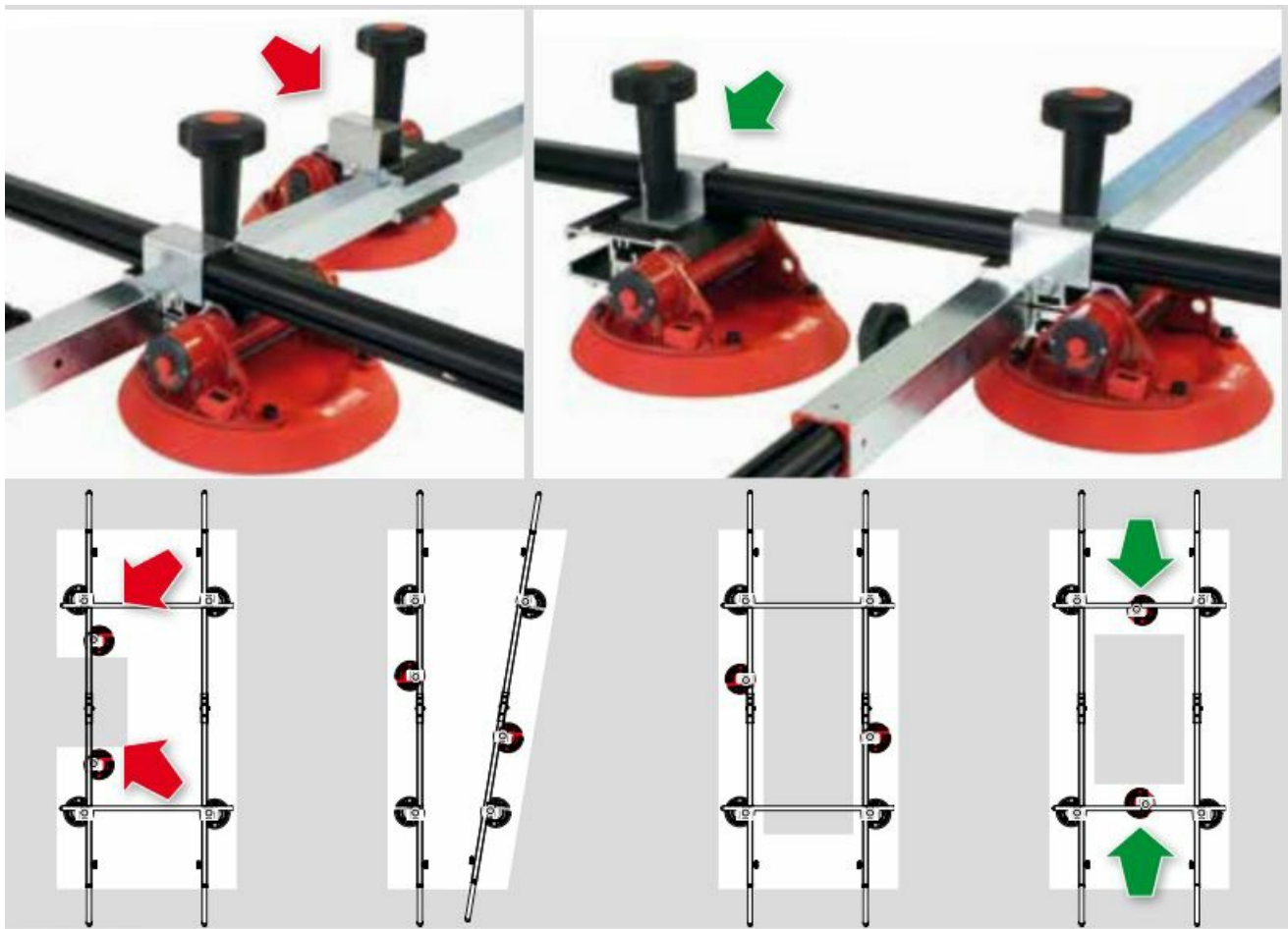




Optional · Art. SUPERLIFT E-POWER-01 · (2 pcs)

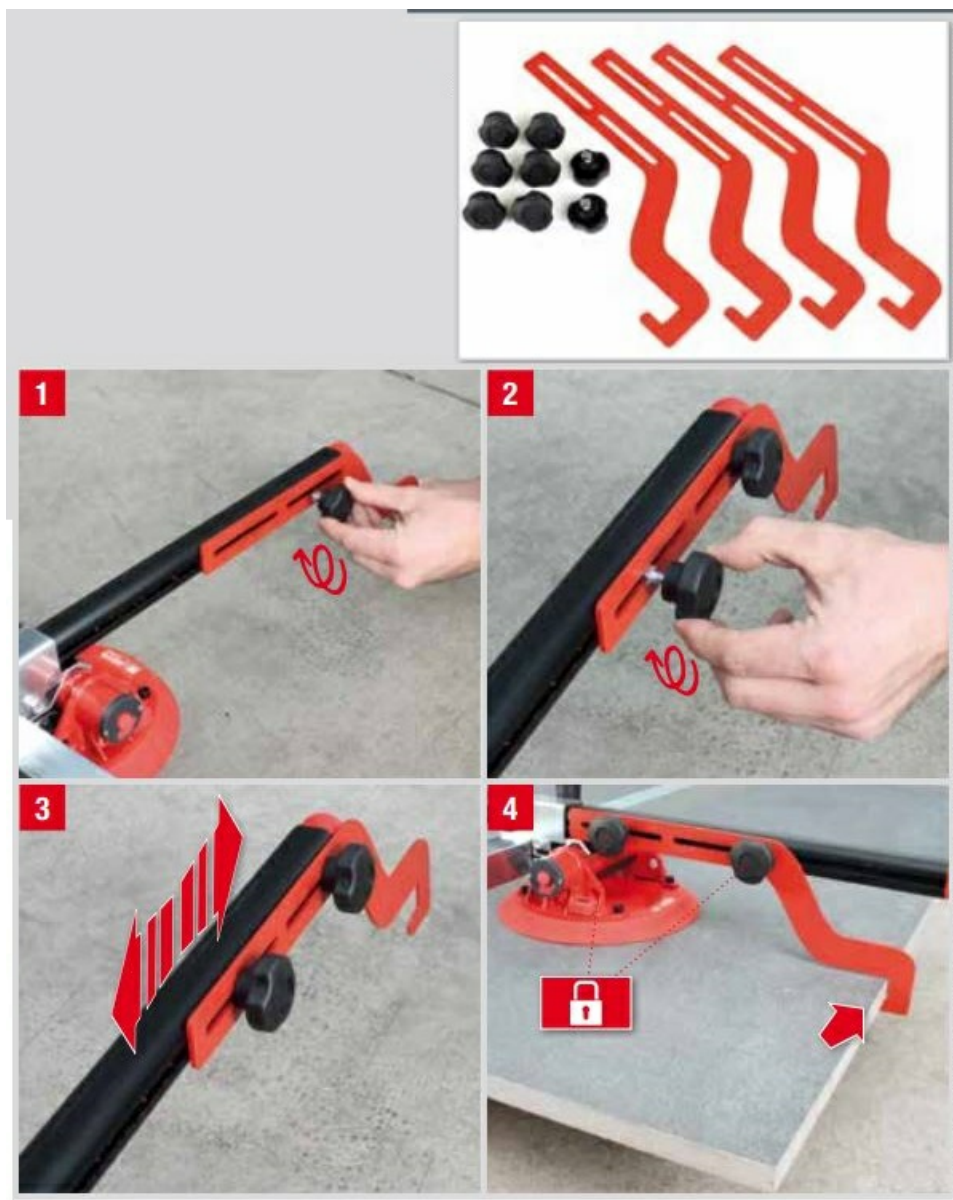


We recommended the use of 2 or more additional suction cups for machined or shaped slabs.



Optional · Art. SUPERLIFT E-POWER-02 · (4 pcs)

Extra safety hooks for rough slabs.



WARRANTY – 2 (TWO) years from date of sale (delivery note/receipt or invoice). Any malfunctions caused by inappropriate or incorrect use of the machine will not be covered under the warranty.



Brevetti Montolit S.p.A.

Sedi operative/Company headquarters:

Largo Cav. Montoli – 21050 Cantello (VA) Italy

Via Varese 4/A – 21050 Cantello (VA) Italy

Sede legale/Legal head office:

Via Turconi, 25 – 21050 Cantello (VA) Italy

Tel. ++39 0332 419 211

Fax ++39 0332 418 444

www.montolit.com – info@montolit.com

Contents

1 Documents /

Resources


1.1 References

Documents / Resources



[MONTOLIT 300-70SL-MOB Modular Handling System For Slabs](#) [pdf] Installation Guide
300-70SL-MOB Modular Handling System For Slabs, 300-70SL-MOB, Modular Handling
System For Slabs, Handling System For Slabs, System For Slabs

References

-  [HOME - Montolit](#)
- [User Manual](#)

Manuals+, Privacy Policy

This website is an independent publication and is neither affiliated with nor endorsed by any of the trademark owners. The "Bluetooth®" word mark and logos are registered trademarks owned by Bluetooth SIG, Inc. The "Wi-Fi®" word mark and logos are registered trademarks owned by the Wi-Fi Alliance. Any use of these marks on this website does not imply any affiliation with or endorsement.