

**MONTE CARLO MC262 Series Light Fixture**



# MONTE CARLO MC262 Series Light Fixture Owner's Manual

[Home](#) » [MONTE CARLO](#) » MONTE CARLO MC262 Series Light Fixture Owner's Manual 

## Contents

- [1 MONTE CARLO MC262 Series Light Fixture](#)
  - [1.1 Product Information](#)
- [2 Product Usage Instructions](#)
- [3 Cautions and Warnings](#)
- [4 GENERAL INSTALLATION](#)
- [5 TROUBLESHOOTING](#)
- [6 Frequently Asked Questions](#)
- [7 Documents / Resources](#)
  - [7.1 References](#)
- [8 Related Posts](#)

*Monte Carlo*

## MONTE CARLO MC262 Series Light Fixture



## Product Information

### Specifications:

- **Model Number:** MC262
- **Weight:** 0.25 kg (0.55 lbs)

### Cautions and Warnings:

We thank you for selecting our superior quality MC262 Series light fixture. Please read and follow the instructions and precautions below to ensure safe installation and usage of the product.

### General:

**CAUTION:** This light kit is compatible only with 3ROZR52/44 (Rozzen) series fans manufactured by Chien Luen Industries (Zhongshan) LTD. To reduce the risk of fire and electric shock, do not use this light kit with other fan models.

Before starting the installation, make sure your fan has been properly installed and wired to allow use with the light kit. All electrical connections must comply with local codes, ordinances, and national electrical codes. If you are not familiar with electrical wiring installation, it is recommended to seek assistance from a qualified electrician.

**CAUTION:** This light kit requires AC 120V/60HZ power supply only. Before starting the installation, disconnect the power by turning off the circuit breaker or removing the fuse at the fuse box. Simply turning off the fan switch is not sufficient to avoid electrical shock.

Note that the instructions provided in this manual may not cover all possible conditions and situations. It is important to exercise common sense, caution, and care while installing and operating the product.

## Product Usage Instructions

### Normal Installation (Plug System):

1. Review the installation instructions supplied with your fan to ensure proper fan installation.
2. Use the plug system method to install the light kit. Refer to Figure A for visual reference.
3. Connect the lead wires from the light kit to the corresponding lead wires from the fan, ensuring a secure connection.
4. Make sure no filaments are exposed in the wire connections.
5. Install wire nuts to all connections to ensure a safe and secure electrical connection.
6. Use the remote control that comes with the fan to control the uplight and downlight separately.

### Installation without Plug System:

1. If your fan does not have a plug system, follow these steps:
2. Remove the plugs from the light kit by cutting them off with scissors or wire cutters.
3. Connect the lead wires from the power source to the lead wires from the light kit.
4. Ensure a secure connection and use wire nuts to cover all connections, making sure no filaments are exposed. Refer to Figure B for visual reference.

**Installation with Semi-Flush Mount:**

If your light kit is available with a semi-flush mount option, use a wall switch to control the light kit when it is installed with the semi flush mount.

**MC262 Series light fixture**

Attach the sales receipt to this card and retain it as your proof of purchase

- DATE OF PURCHASE:
- MODEL NUMBER:
- RETAILER NAME:
- RETAILER ADDRESS:

To register your fixture, please visit our website [www.montecarlofans.com](http://www.montecarlofans.com)

**Light kit weight**

- 0.25 kg
- 0.55 lbs

**Cautions and Warnings**

We thank you for selecting one of our superior-quality products. We dedicate considerable time and effort to ensure they are the best available.

**GENERAL**

**CAUTION:** To reduce the risk of fire and electric shock, this light kit should be used only with the 3ROZR52/44 (Rozzen) series and manufactured by Chien Luen Industries (Zhongshan) LTD.

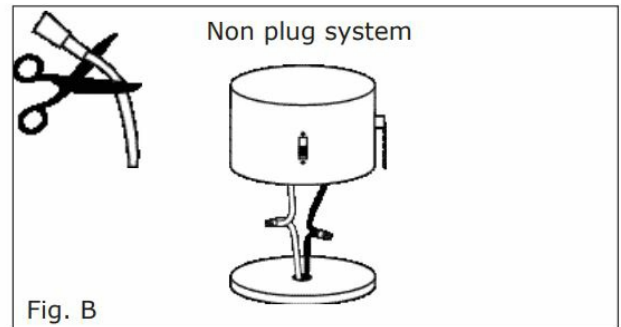
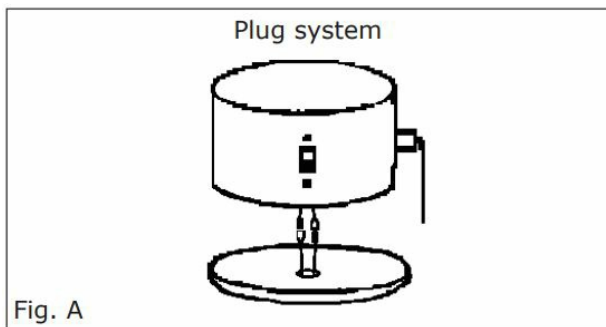
- To assure success of this installation be sure to read the instructions and review the diagrams thoroughly before beginning. Follow the instructions that are applicable for your light kit.
- Review the installation instructions supplied with your fan. Make sure that your fan has been installed and wired properly to allow use with your light kit.
- All electrical connections must be in accordance with local codes, ordinances, and national electrical codes.
- If you are unfamiliar with methods of installing electrical wiring, secure the services of a qualified electrician.

**CAUTION:** Use AC 120V/60HZ power supply only. Risk of electrical shock. Before starting installation, disconnect the power by turning off the circuit breaker or removing the fuse at the fuse box. Turning the power off using the fan switch is not sufficient to avoid electrical shock.

**NOTE:** The important safeguards and instructions appearing in this manual are not meant to cover all possible conditions and situations that may occur. It must be understood that common sense, caution and care are factors that cannot be built into any product. These factors must be supplied by the person(s) caring for and operating the unit.

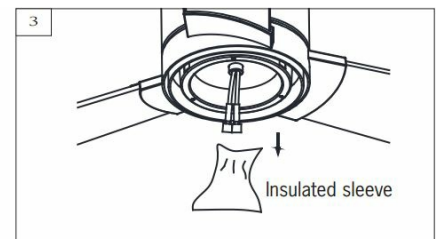
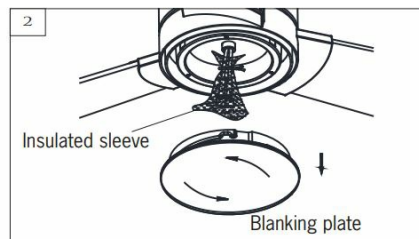
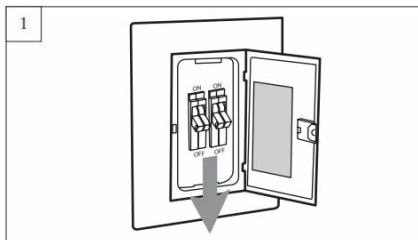
**NOTE:** For normal installation, please use the plug system to install the light kit. Figure A.

1. For installation where the fan doesn't have a plug system, remove plugs (cut off plugs with scissors or wire cutters) and wire lead wires from the source to lead wires from the light kit. Install wire nuts to all connections making sure no filaments are exposed. Figure B
2. Use the remote control that comes with fan to control up light and down light separately when used with fan.
3. If the light kit is available with a semi-flush mount, use the wall switch when the light kit is installed with a semi-flush mount.

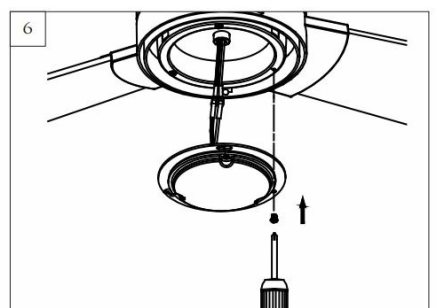
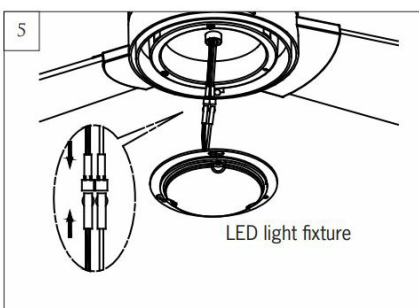
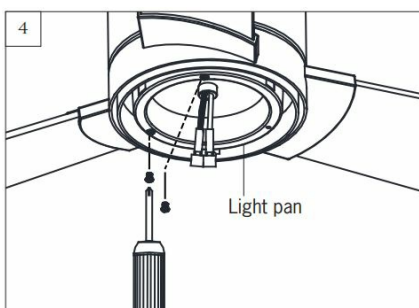


## GENERAL INSTALLATION

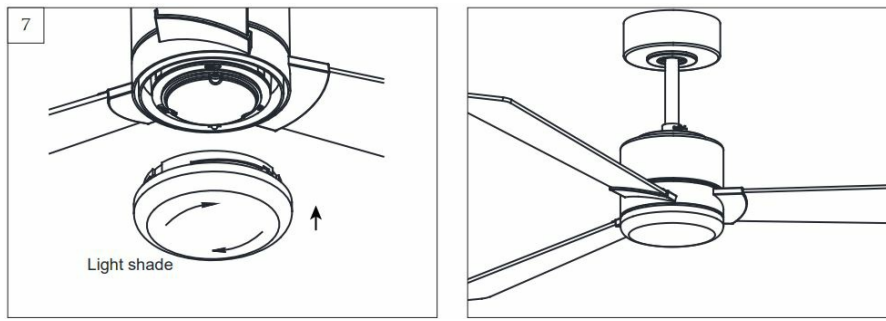
1. Before you begin installing the fan, Switch the power off at the Service panel and lock the service disconnecting means to prevent power from being switched on accidentally. When the service disconnecting means cannot be locked, securely fasten a warning device, such as a tag, to the service panel.
2. Remove the blanking plate from the fan by turning it counterclockwise.
3. Remove the insulated sleeve from light lead wires.



4. Partially install 2 set screws on the light pan. Screws provided.
5. Connect white wire from fan to white wire from LED light fixture and then connect blue (or black) wire from fan to black (or blue) wire from LED light fixture. Be sure plugs connection is clasped together firmly.
6. Attach the LED light fixture onto the light pan, aligning the keyhole slots on the LED light fixture with the screws on the light pan. Twist clockwise till lock. Install the other provided screw. Tighten all screws securely.



7. Attach a light shade by locating dimples in a light pan with grooves on the light shade and twist clockwise until tight.



## TROUBLESHOOTING

1. Check the blue (if there is blue wire for light) wire from the fan to make sure it is connected to the hot wire from the house.
2. Check for loose or disconnected wires in the fan switch housing.
3. Check for loose or disconnected wires in the light kit.
4. Check for faulty light luminant.

**WARNING:** Make sure the main power is turned off before handling light fixture installation.

<https://manual-hub.com/>

### Contact Information:

For any further assistance or inquiries, please contact our Customer Service: Phone: 800-969-3347 Customer Service Center Address: 7400 Linder Ave. Skokie, IL 60077 Website: [www.montecarlofans.com](http://www.montecarlofans.com)

## Frequently Asked Questions

Can I use this light kit with any fan model?

No, this light kit is only compatible with 3ROZR52/44 (Rozzen) series fans manufactured by Chien Luen Industries (Zhongshan) LTD.

What power supply should I use for this light kit?

This light kit requires an AC 120V/60HZ power supply.

Can I install the light kit myself if I have no experience with electrical wiring?

It is recommended to seek the assistance of a qualified electrician if you are unfamiliar with electrical wiring installation.

How can I control the uplight and downlight separately?

Use the remote control that comes with the fan to control the uplight and downlight separately.

What should I do if my fan does not have a plug system?

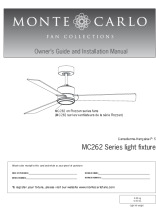
If your fan does not have a plug system, you will need to remove the plugs from the light kit and connect the lead wires from the power source to the lead wires from the light kit using wire nuts.

Can I use a wall switch to control the light kit with semi flush mount?

Yes, if your light kit is available with a semi flush mount option, you can use a wall switch to control the light kit when it is installed with the semi flush mount.

---

## Documents / Resources

	<a href="#">MONTE CARLO MC262 Series Light Fixture</a> [pdf] Owner's Manual MC262 Series, MC262 Series Light Fixture, Light Fixture, Fixture
---	---

## References

- [Manual-Hub.com - Free PDF manuals!](#)
- [User Manual](#)

### Manuals+, Privacy Policy

This website is an independent publication and is neither affiliated with nor endorsed by any of the trademark owners. The "Bluetooth®" word mark and logos are registered trademarks owned by Bluetooth SIG, Inc. The "Wi-Fi®" word mark and logos are registered trademarks owned by the Wi-Fi Alliance. Any use of these marks on this website does not imply any affiliation with or endorsement.