

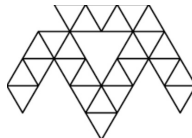


# MONSTERTECH Apache MPD for Table Mount Instruction Manual

[Home](#) » [Monstertech](#) » MONSTERTECH Apache MPD for Table Mount Instruction Manual 

## Contents

- [1 MONSTERTECH Apache MPD for Table Mount](#)
- [2 GENERAL ASSEMBLY INFO AND HOW TO](#)
- [3 PROFILE CAP ASSEMBLY](#)
- [4 WARNING NOTICES](#)
- [5 Documents / Resources](#)
  - [5.1 References](#)
- [6 Related Posts](#)



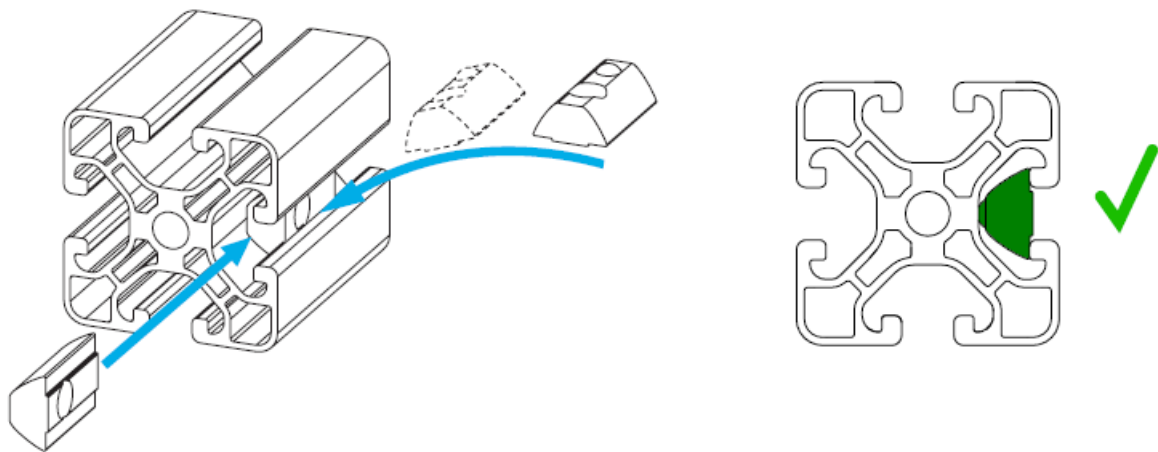
MONSTERTECH

**MONSTERTECH Apache MPD for Table Mount**

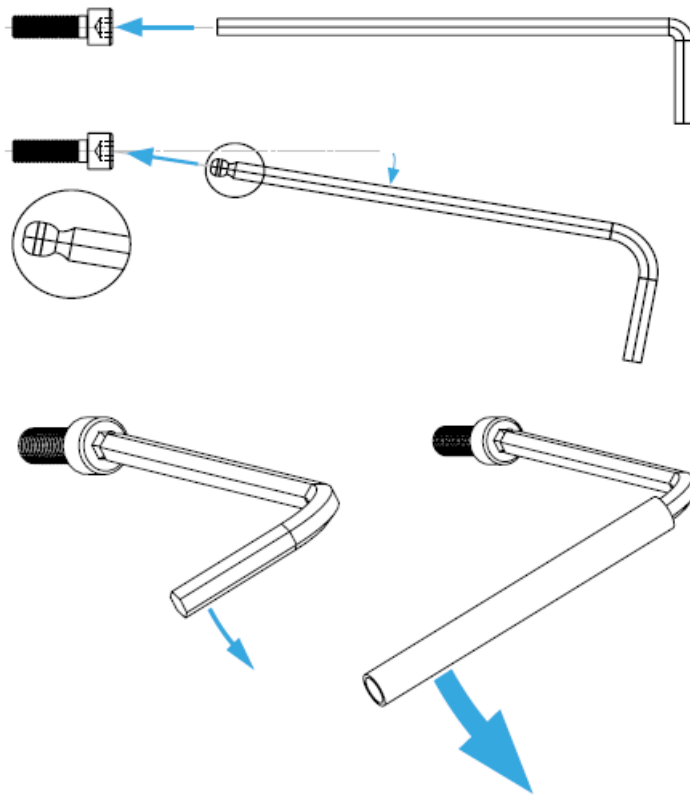


## GENERAL ASSEMBLY INFO AND HOW TO

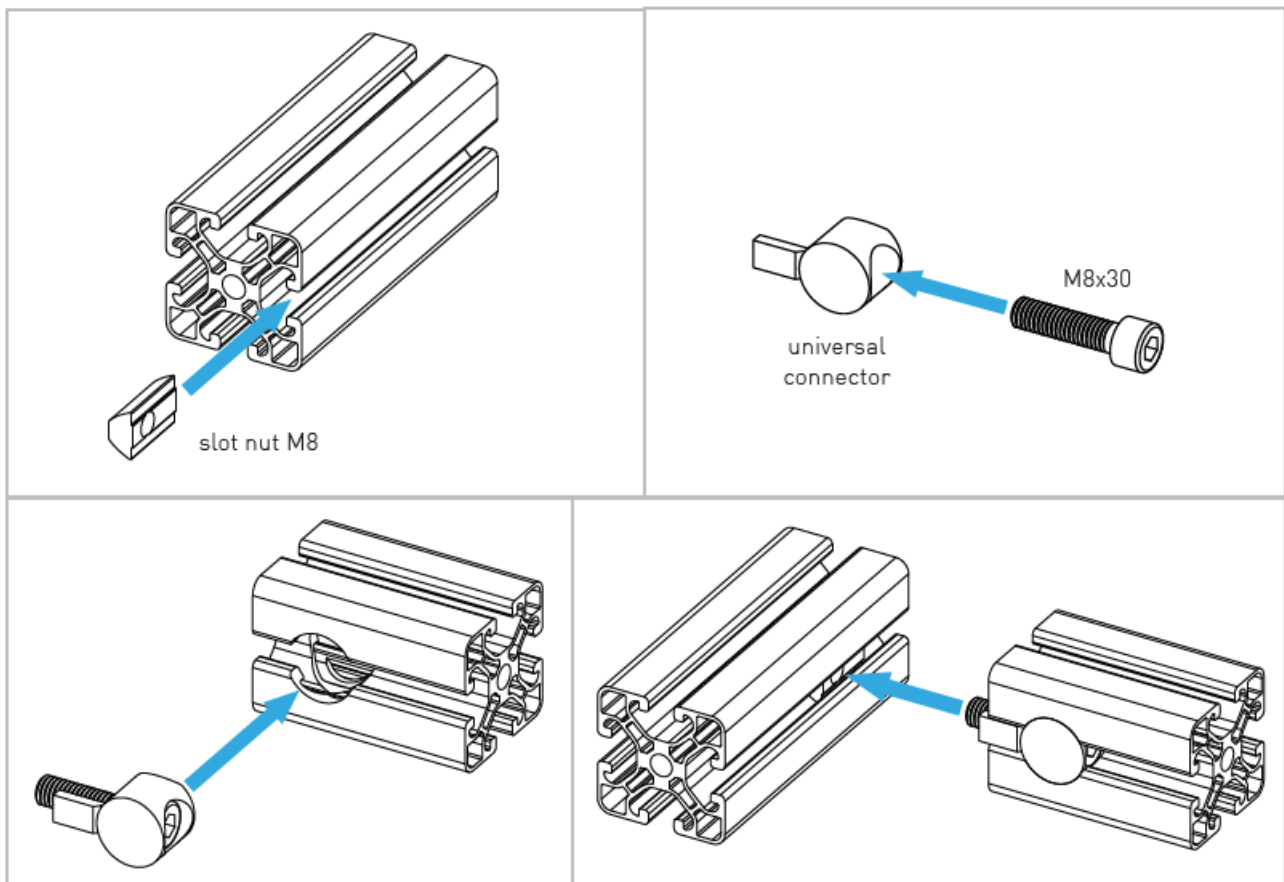
### PROFILE NUT



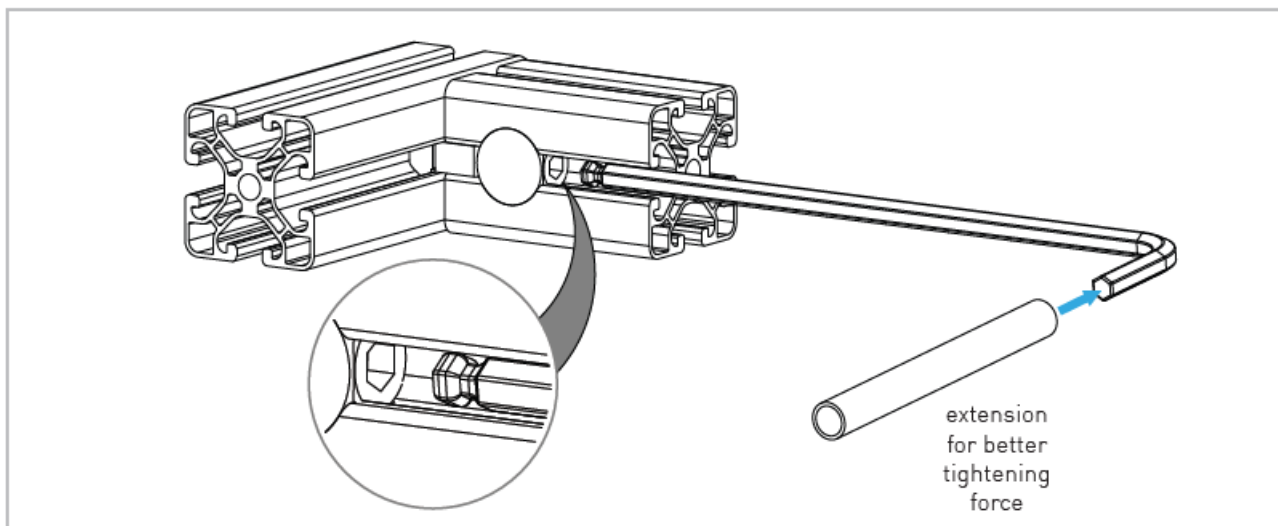
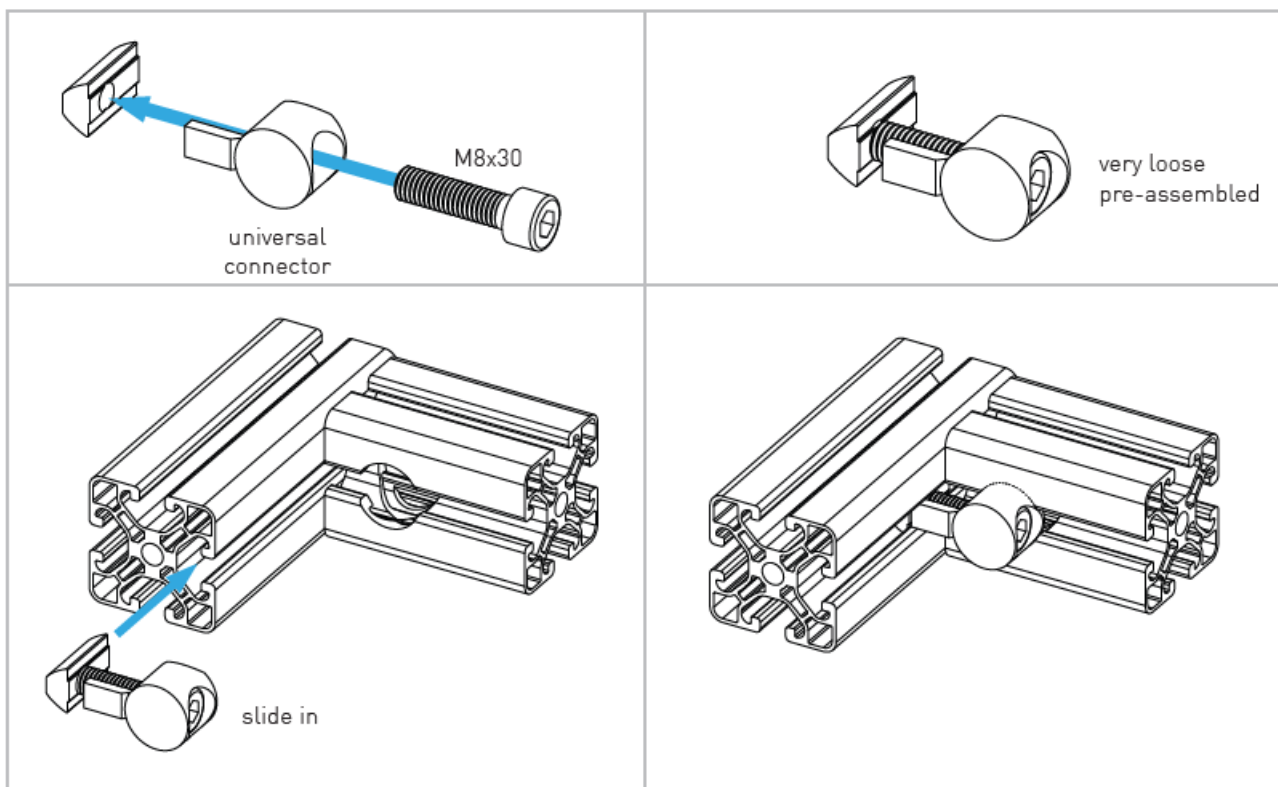
HEX KEY SET WITH BALL HEAD + EXTENSION OR SIMILAR REQUIRED



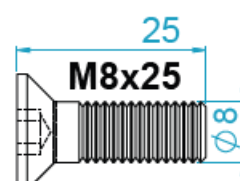
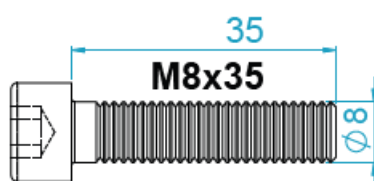
## UNIVERSAL CONNECTOR



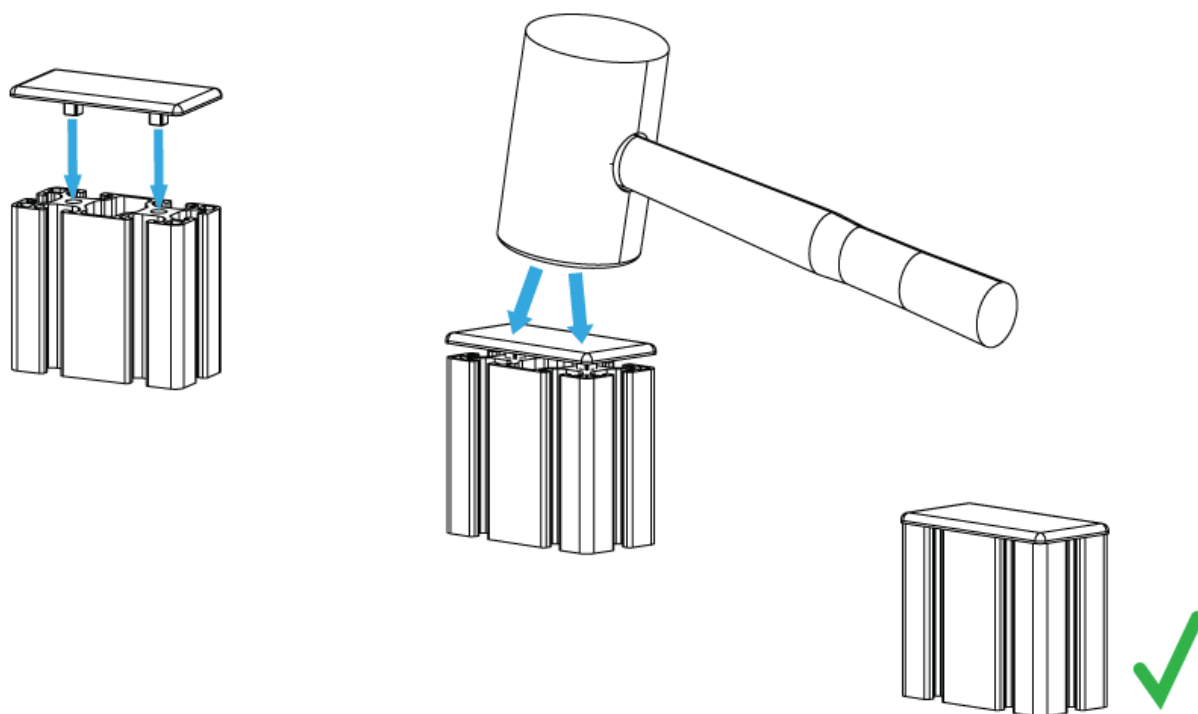
## ALTERNATIVE



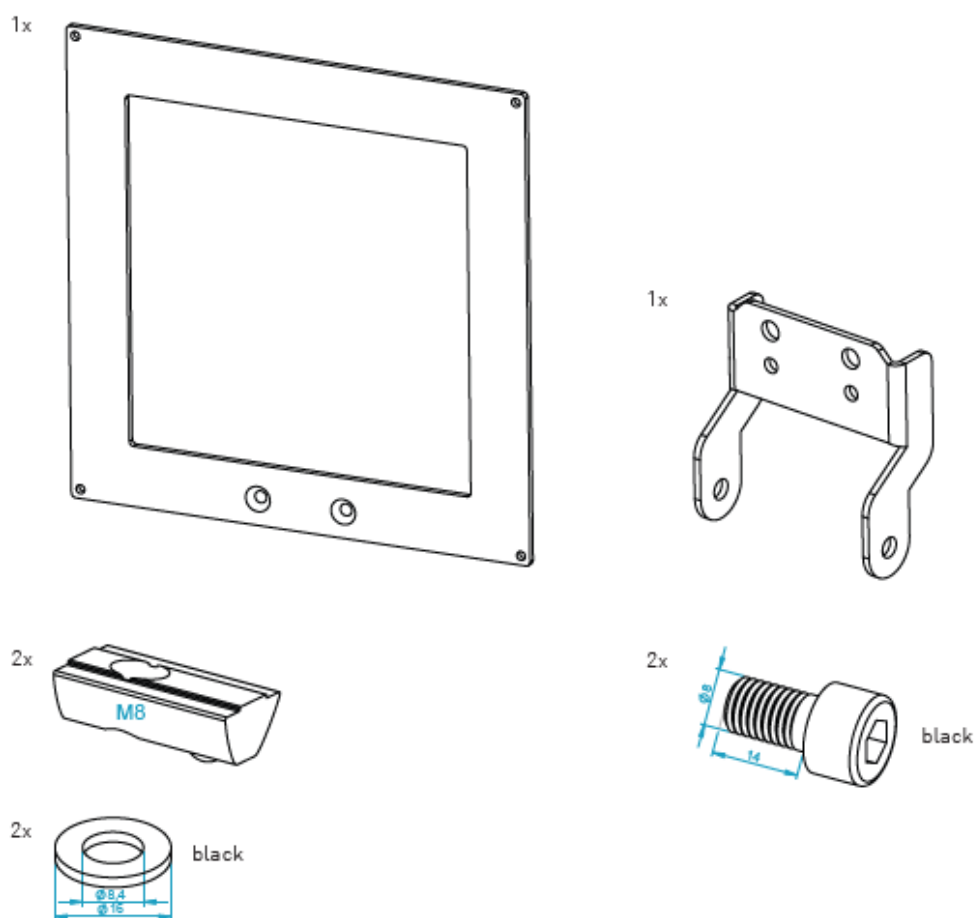
#### BOLT DIMENSIONS AND HOW TO MEASURE THEM [mm]

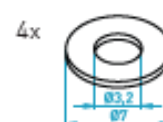
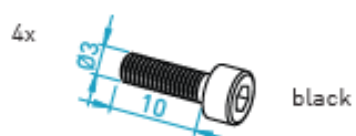
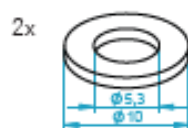
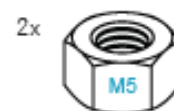
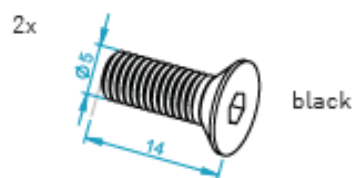


#### PROFILE CAP ASSEMBLY

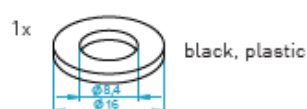
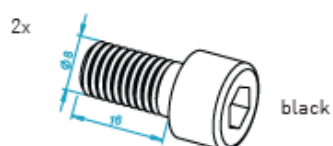
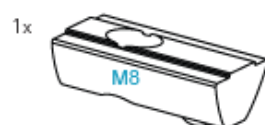
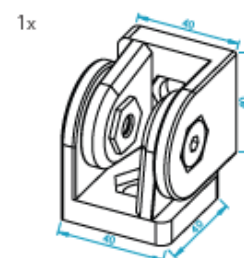
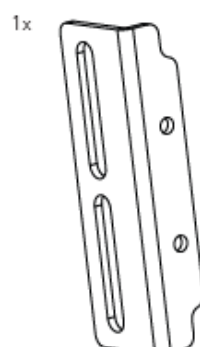
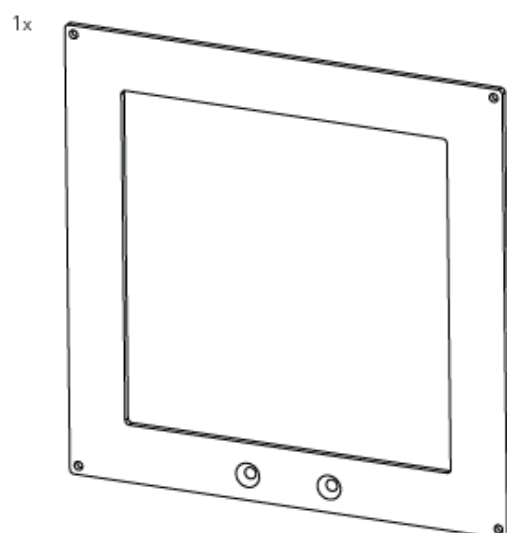


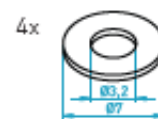
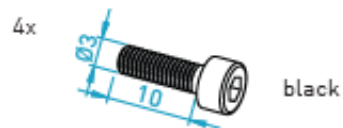
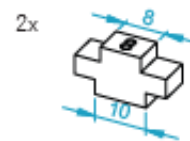
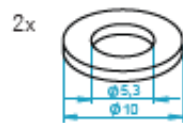
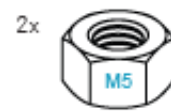
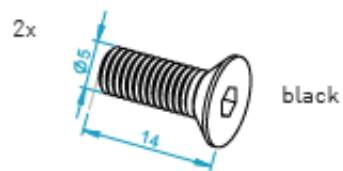
## PARTS – CENTER ASSEMBLY



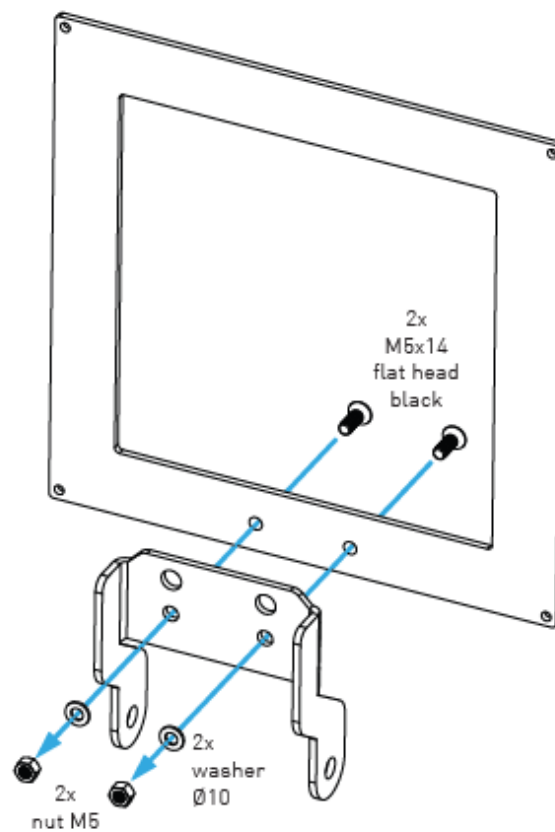


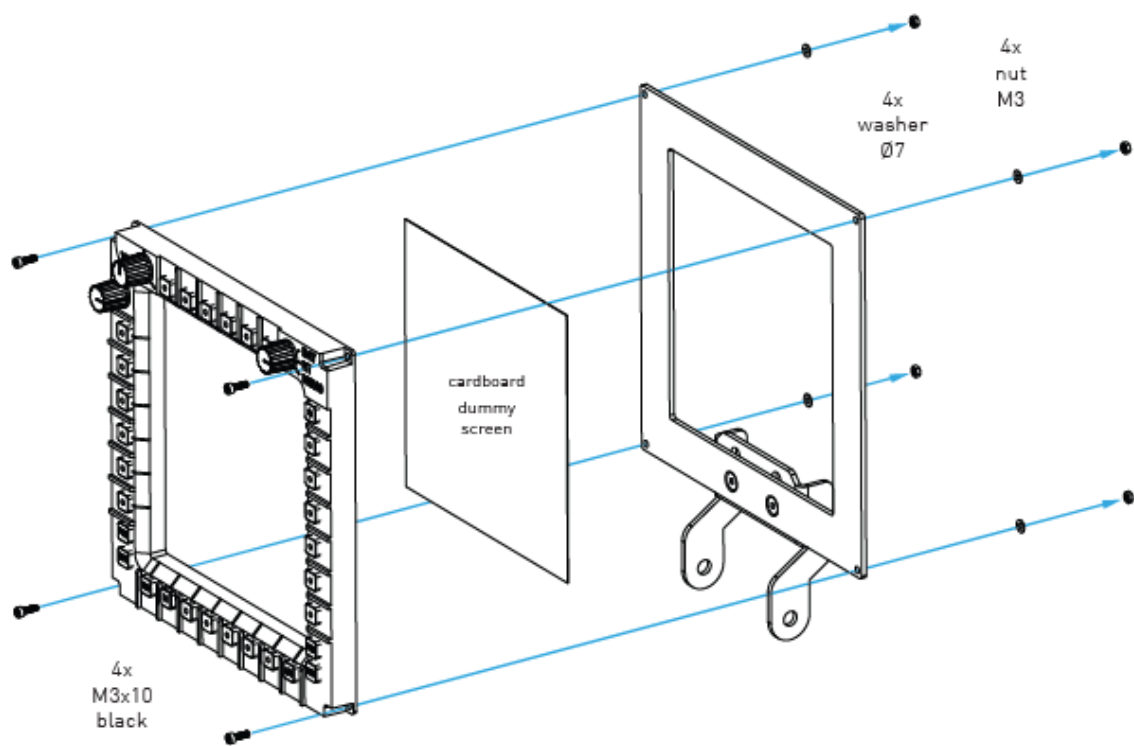
## PARTS – SIDE ASSEMBLY



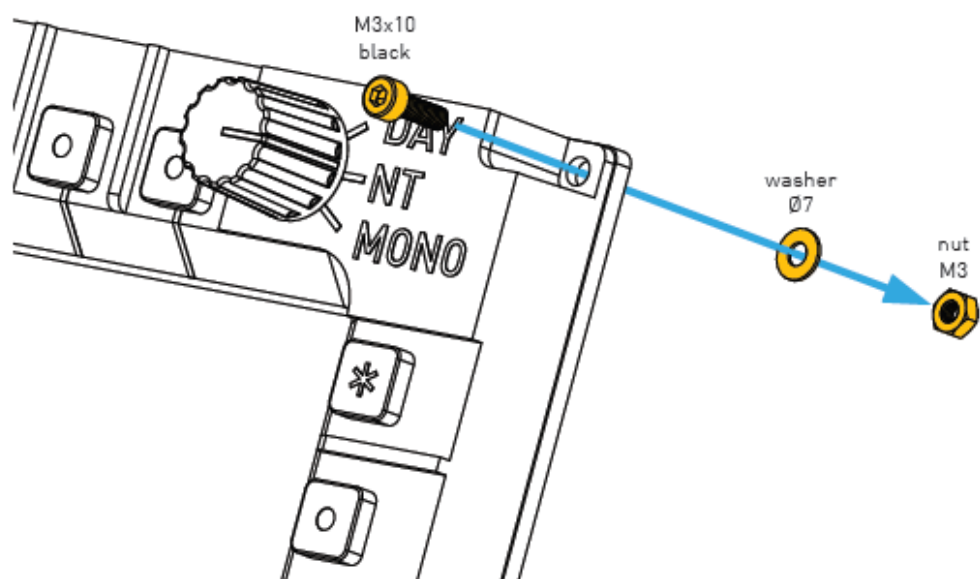


## CENTER ASSEMBLY

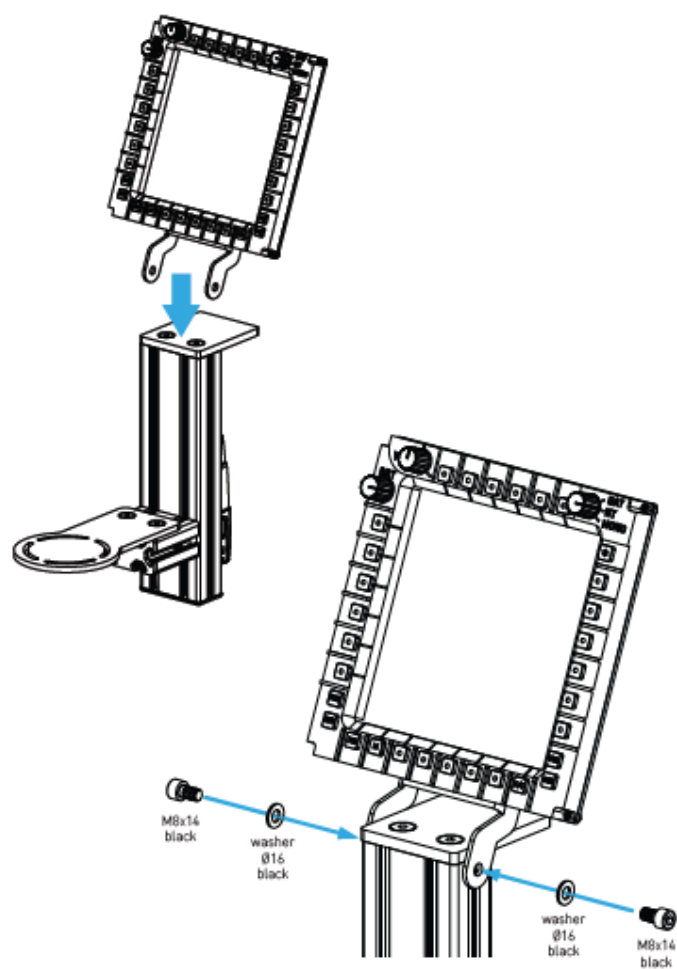
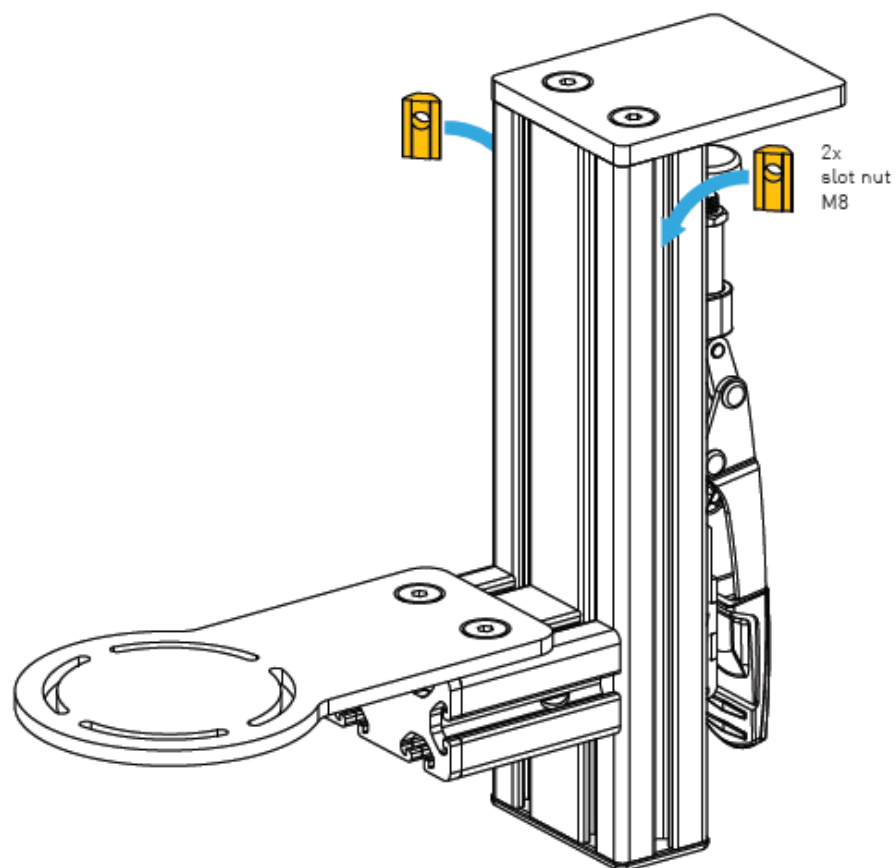


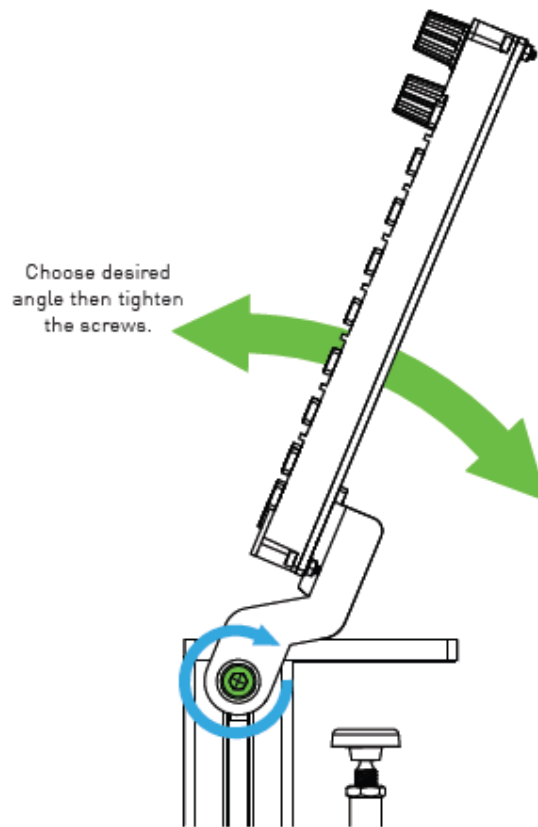


detail

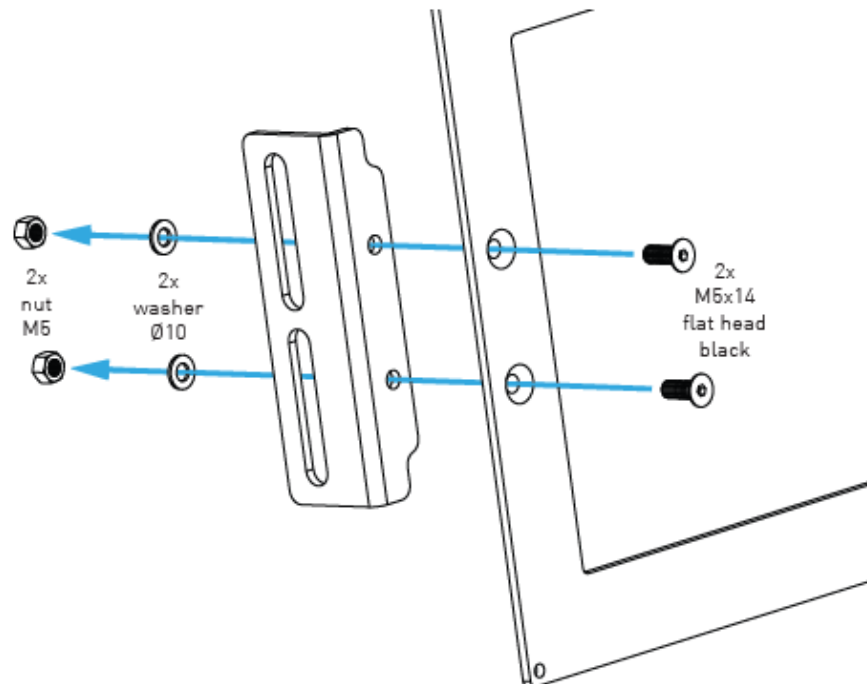




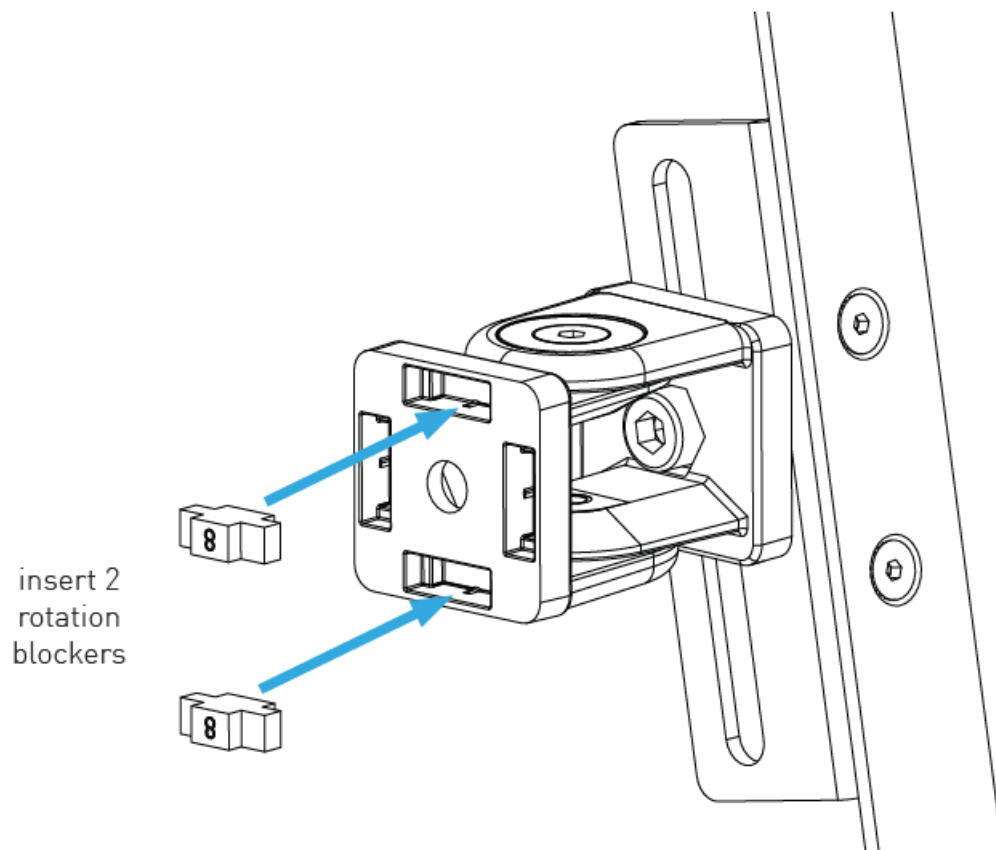
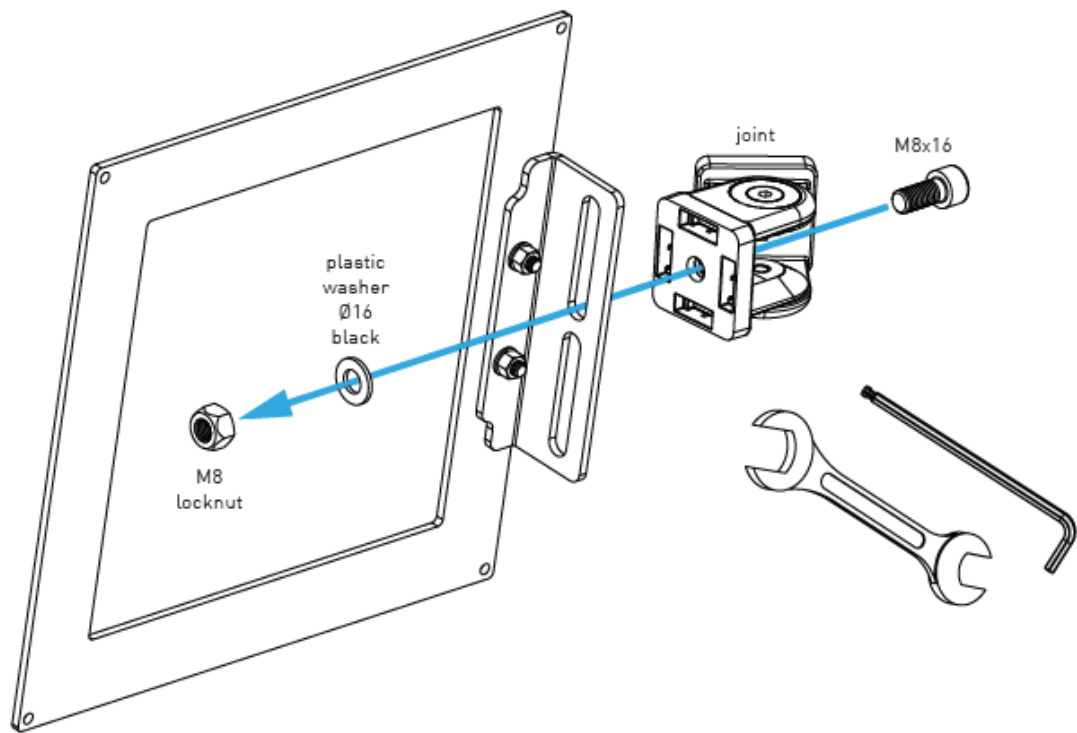




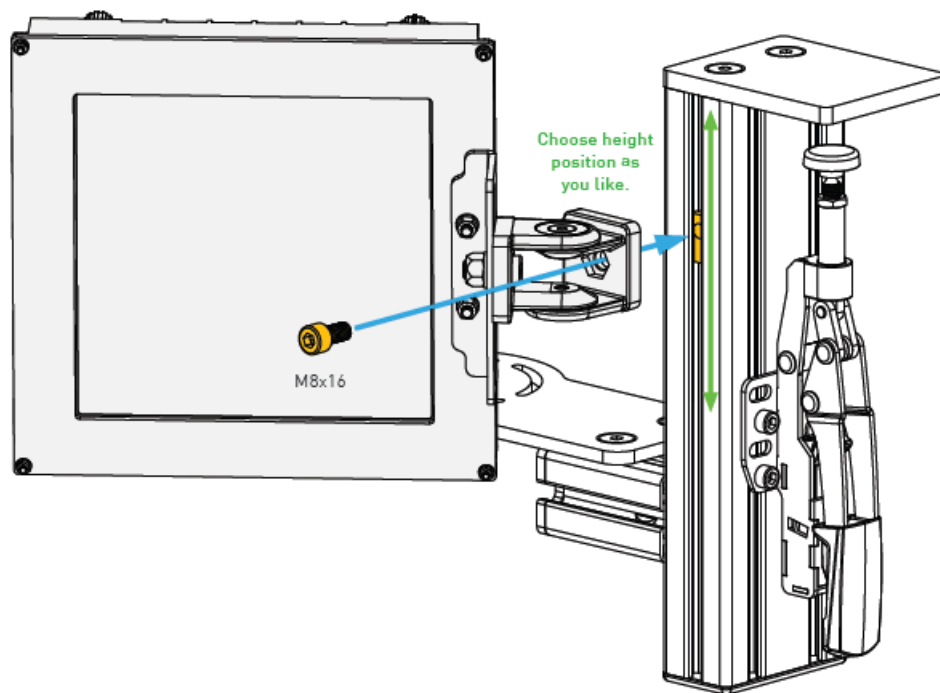
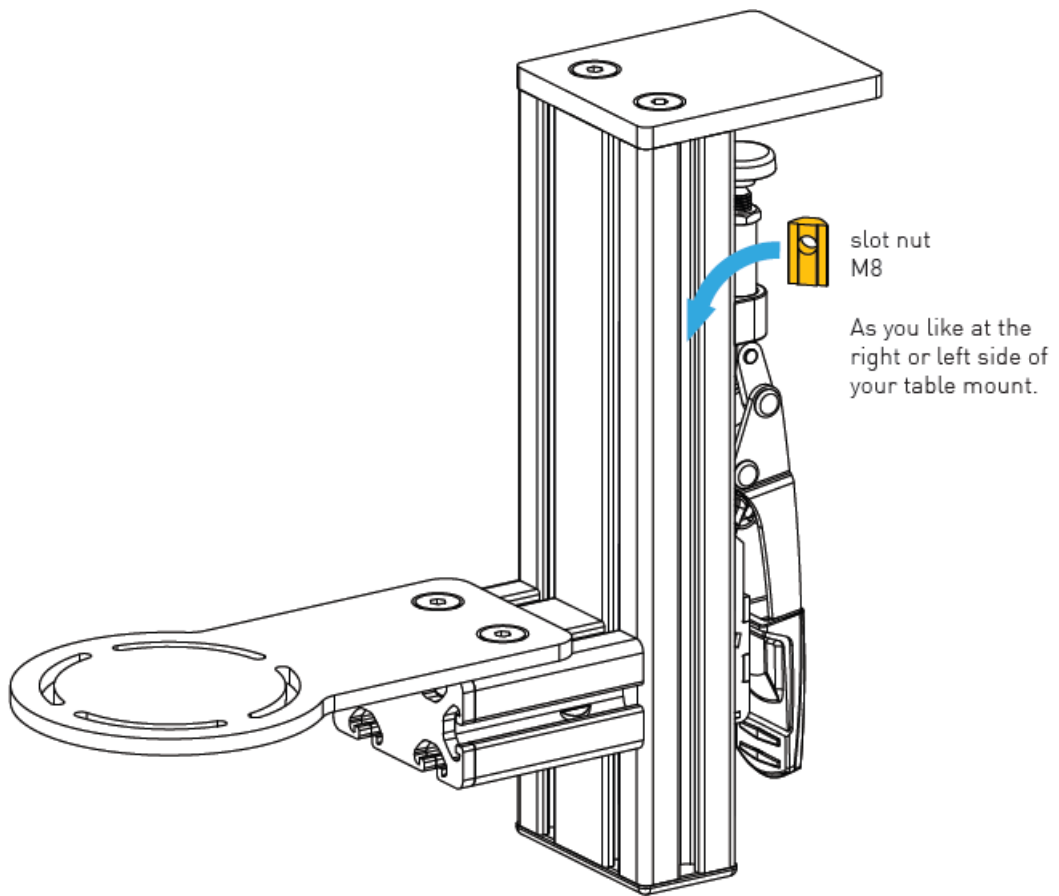
## SIDE ASSEMBLY

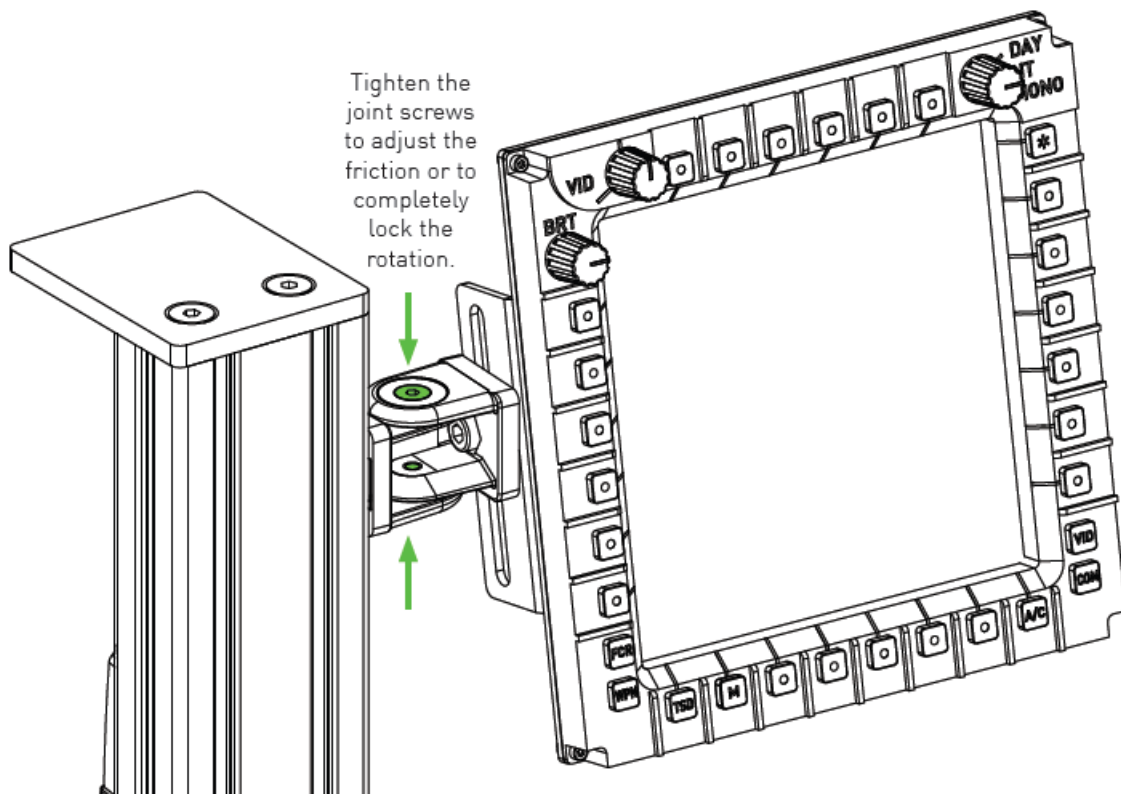


- A locknut has to be rough-running on a bolt.
- Therefore you need to use a wrench and a hex key to tighten it.
- Hold up the M8x16 bolt with the hex key while tighten the locknut with the wrench (or reverse).
- Its perfect tighten if you still can angle your mounted device but it is tight enough not to move unintentional.



- Assemble the Apache MPD same way as shown for center assembly on page 7-8.





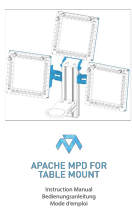
## WARNING NOTICES

- **CAUTION!** Do not clamp your fingers while attaching the Apache MPD.
- **CAUTION!** Check before usage if all screws are tightened.
- **CAUTION!** Check before usage that the Apache MPD is screwed on tight after making adjustments.
- **DANGER:** Contains small parts not suitable for children under 3 years.

- Only suitable for children over 12 years and adults.
- All MTSIM products are hand assembled and quality checked.
- The mount is designed for usage only with a computer controller (e.g. joystick or throttle).
- We exclude liability if the product is used for purposes other than intended.
- MTSIM shall be liable for damage arising from causes other than the detriment to life, body and health only to the extent that such damage arises from willful misconduct, gross negligence or the culpable violation of a fundamental contractual obligation on the part of MTSIM or a vicarious agent (e.g. the delivery service) of MTSIM. Any further liability for damages shall be excluded.
- If you have safety concerns or questions regarding assembly, contact us under [info@mtsim.com](mailto:info@mtsim.com) or visit [www.mtsim.com/en/](http://www.mtsim.com/en/)

---

## Documents / Resources

	<p><a href="#">MONSTERTECH Apache MPD for Table Mount</a> [pdf] Instruction Manual  Apache MPD for Table Mount, Apache, MPD for Table Mount, Table Mount, Mount</p>
--	---

## References

- [User Manual](#)