



# MONSTAR NINJA87PRO Mechanical Keyboard User Manual

[Home](#) » [MONSTAR](#) » MONSTAR NINJA87PRO Mechanical Keyboard User Manual 

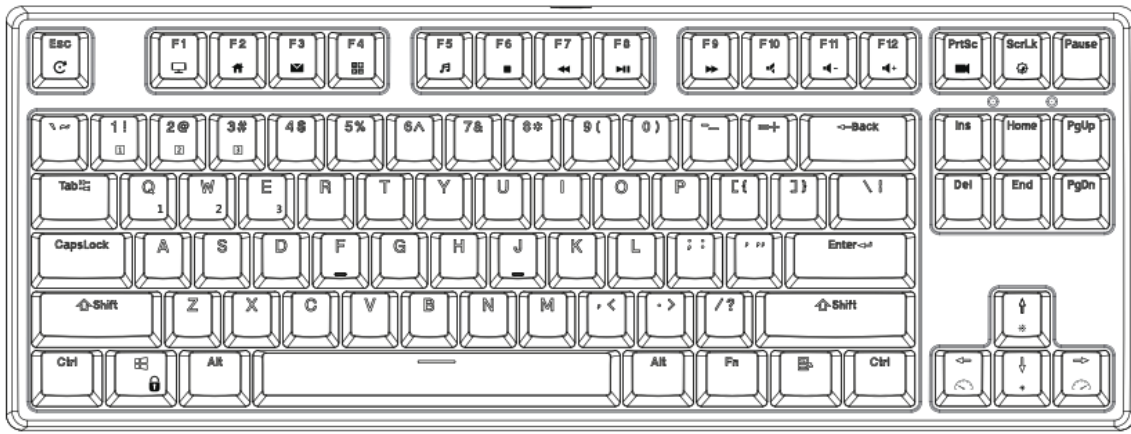


M O N S T A R

## Contents

- [1 NINJA87PRO](#)
- [2 Wired Mode& Charging](#)
- [3 Bluetooth Mode](#)
- [4 LED Control](#)
- [5 Custom LED recording method](#)
- [6 WINDOWS Multimedia Keys](#)
- [7 MAC Multimedia Keys](#)
- [8 Required Specifications,](#)
- [9 Documents / Resources](#)
- [10 Related Posts](#)

**NINJA87PRO**

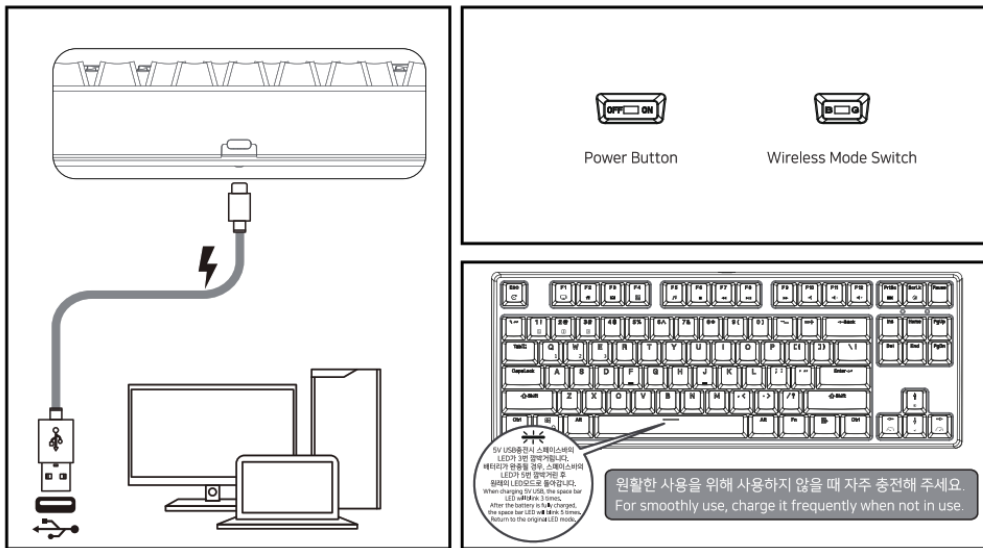


SIZE	364(0 x137(W) x40(H)±2
KEYS	87 keys
LED	Single/RGB
SWITCH	mechanical switch (Cherry MX like)
Connect	Wired(USB)/ Bluetooth
GUARANTEE	12 months free A/S service in case of product defected, not the user's negligence.

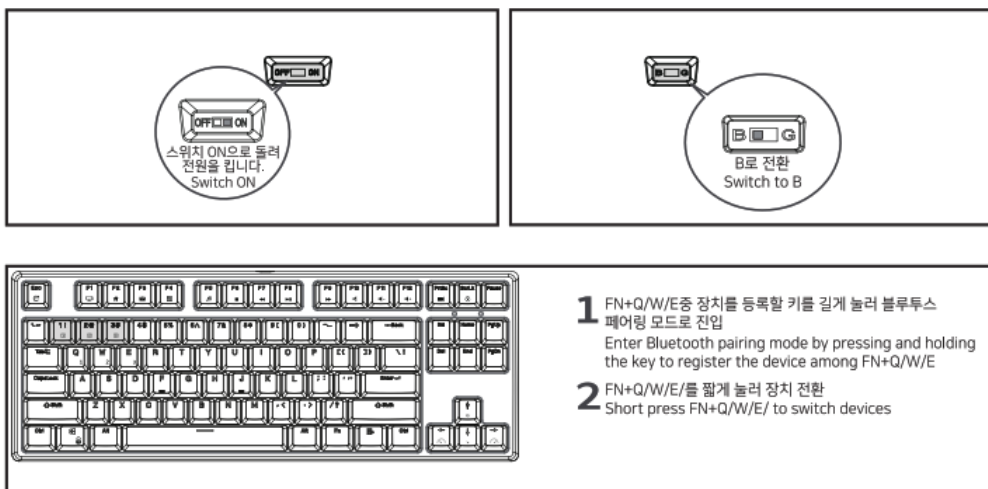
1ea
1ea
1ea
1ea
1ea
USB type-c 1ea

Components
Keyboard 1 ea
Manual 1 ea
Keycap remover 1ea
Dongle 1 ea
USB Type-C Cable 1 ea

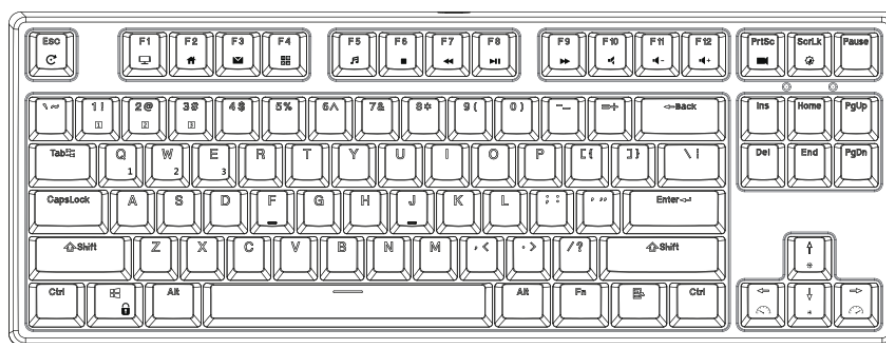
## Wired Mode& Charging



## Bluetooth Mode

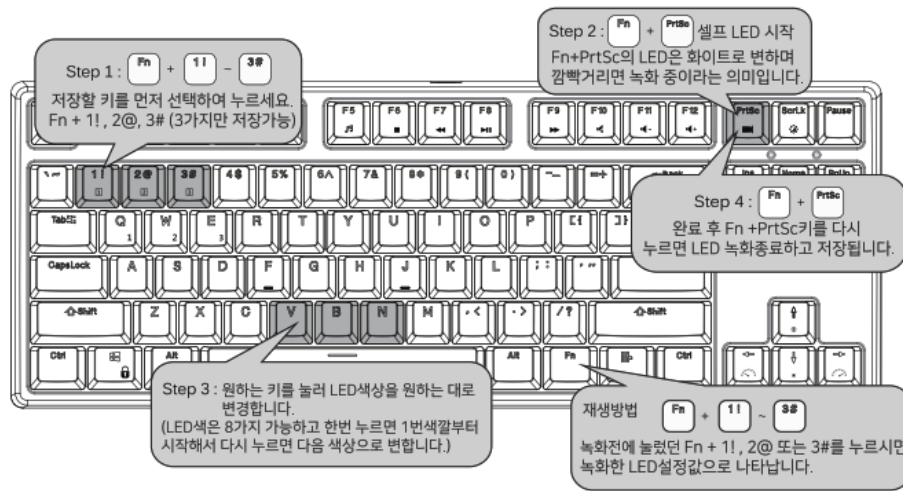


## LED Control



Fn + ↑ *	LED Brightness +	Fn + Pause	LED Color Switching
Fn + ↓ *	LED Brightness -	Fn + ScrLk	LED Mode Switching
Fn + ↶	LED Speed -	Fn + Esc	Press and hold for 3 seconds to reset
Fn + ↷	LED Speed +	Fn + Win	Window Key Lock

## Custom LED recording method



Step 1 : Select and press the key Fn + 1! , 2@, 3# to save first. (only 3 kinds)

Step 2 : Press Fn+PrtSc to start recording Fn+PrtSc will turn white and blink to indicate that it is recording.

Step 3 : Change the LED color as desired by pressing the desired key. (8 LED colors are available, and if you press once, Start and press again to change to the next color.) Step 4 : After completion, press Fn + PrtSc again to end LED recording and save.

How to play? : Press Fn + 1! , 2@, 3# as before recording to display the recorded LED settings.

## WINDOWS Multimedia Keys

FN+A : Windows

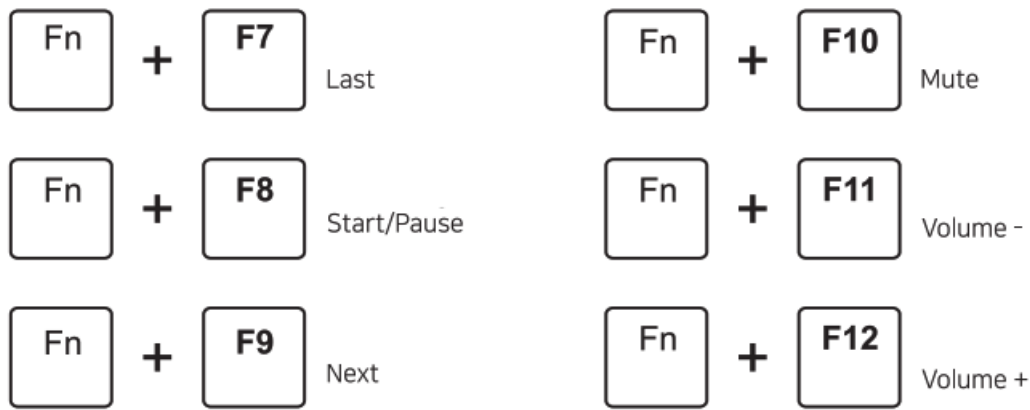
Fn	+	F1	My PC
Fn	+	F2	Browser
Fn	+	F3	E-mail
Fn	+	F4	Calculator
Fn	+	F5	Play
Fn	+	F6	Stop

FN+A : Switch to Windows Mode

Fn	+	F7	Last
Fn	+	F8	Start/Pause
Fn	+	F9	Next
Fn	+	F10	Mute
Fn	+	F11	Volume -
Fn	+	F12	Volume +

## MAC Multimedia Keys

FN+s switch to MAC Mode



## Required Specifications,

### Bluetooth Mode

- More than Bluetooth Mode 3.0, Bluetooth 5.1
- PC: More than Windows() 7
- Mac: More than macOS X 10.6 Snow Leopard
- ios : All of iPad/ More than iPhone 5 411 Android: More than 5.0

This device complies with Part 15 of the FCC Rules. Operation is subject to the following two conditions: (1) this device may not cause harmful interference, and (2) this device must accept any interference received, including interference that may cause undesired operation

**NOTE:** This equipment has been tested and found to comply with the limits for a Class B digital device, pursuant to Part 15 of the FCC Rules. These limits are designed to provide reasonable protection against harmful interference in a residential installation. This equipment generates, uses and can radiate radio frequency energy and, if not installed and used in accordance with the instructions, may cause harmful interference to radio communications. However, there is no guarantee that interference will not occur in a particular installation.

If this equipment does cause harmful interference to radio or television reception, which can be determined by turning the equipment off and on, the user is encouraged to try to correct the interference by one or more of the following measures:

- Reorient or relocate the receiving antenna.
- Increase the separation between the equipment and receiver.
- Connect the equipment into an outlet on a circuit different from that to which the receiver is connected.
- Consult the dealer or an experienced radio/TV technician for help.

Warning: changes or modifications not expressly approved by the party responsible for compliance could void the user's authority to operate the equipment


The devices has been evaluated to meet general RF exposure requirement the device can be used in portable exposure condition without restriction

Internet connection required for software installation. : <https://www.monstargear.co.kr/59>

Software download: <https://www.monstargears.com/75>

Monstar Corp. 329, Hakjang-ro, Sasang-gu, Busan,  
Republic of Korea ga-EK-NIN. 114)dil-pq Atig4 E.N• 329  
<https://www.monstargear.co.kr/>

## Documents / Resources

	<a href="#">MONSTAR NINJA87PRO Mechanical Keyboard</a> [pdf] User Manual SINK87G-RGB, SINK87GRGB, 2A4MQ-SINK87G-RGB, 2A4MQSINK87GRGB, NINJA87PRO Mechanical Keyboard, Mechanical Keyboard
---	---