



## **MONSGEEK MX108 Multi Device Wireless Keyboard and Mouse Combo User Manual**

[Home](#) » [MONSGEEK](#) » MONSGEEK MX108 Multi Device Wireless Keyboard and Mouse Combo User Manual 

### **MONSGEEK MX108 Multi Device Wireless Keyboard and Mouse Combo**



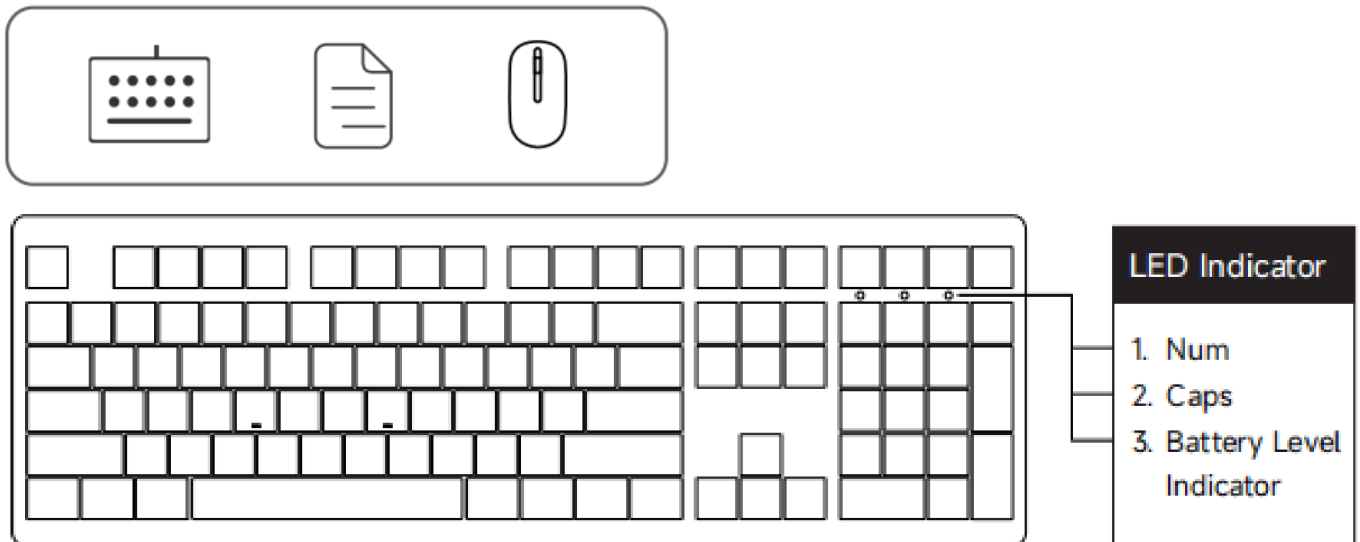
## Contents

- 1 Thank you for supporting Akko
- 2 Packing List
- 3 System Requirement
- 4 Connectivity Method
- 5 Independent Indicator
- 6 MX108 Hot Keys
- 7 MX108 System Commands (Mac)
- 8 MX108 System Commands (Windows)
- 9 MX108 Bluetooth + 2.4G Wireless Mouse Overview
- 10 MONSGEEK Warranty and Service Statement
- 11 Troubleshooting Bluetooth Connectivity Issues for MX108 (Failed Connections or Intermittent Connections)
- 12 Customer support
- 13 Documents / Resources
  - 13.1 References
- 14 Related Posts

## Thank you for supporting Akko

To provide you with a better user experience, please read this manual carefully before using the product.

## Packing List



## System Requirement

Windows®XP / Vista / 7 / 8 / 10 or higher version

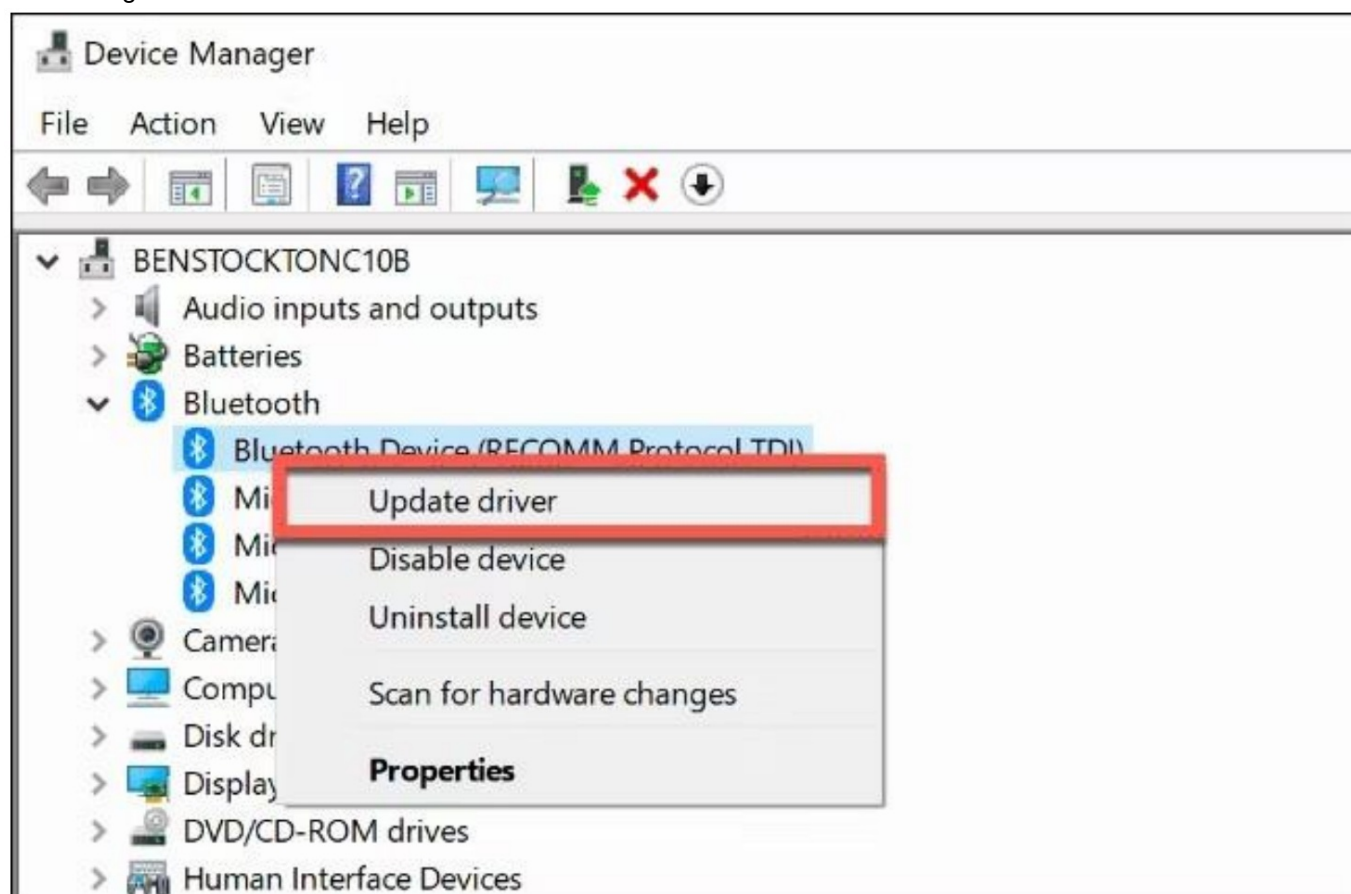
## Connectivity Method

Turn the keyboard power switch to the ON position and insert the USB receiver into an available USB port to complete the 2.4G connection and start using it.

## Independent Indicator

Status	Indicator Position	LED Indicator
Num	LED Indicator 1	Steady white
Caps	LED Indicator 2	Steady white
Low Battery	LED Indicator 3	Slow flashing white LED
Charging		Steady red
Fully Charged		Steady red → Light off

If the Bluetooth still can not connect at all: Power the keyboard on and off, check whether the Bluetooth driver is the latest version, and upgrade, after upgrading, turn off the Bluetooth mode on the computer, and then turn it on again. Make sure the distance between the computer and the wireless keyboard is within 10 meters, and try to connect again.



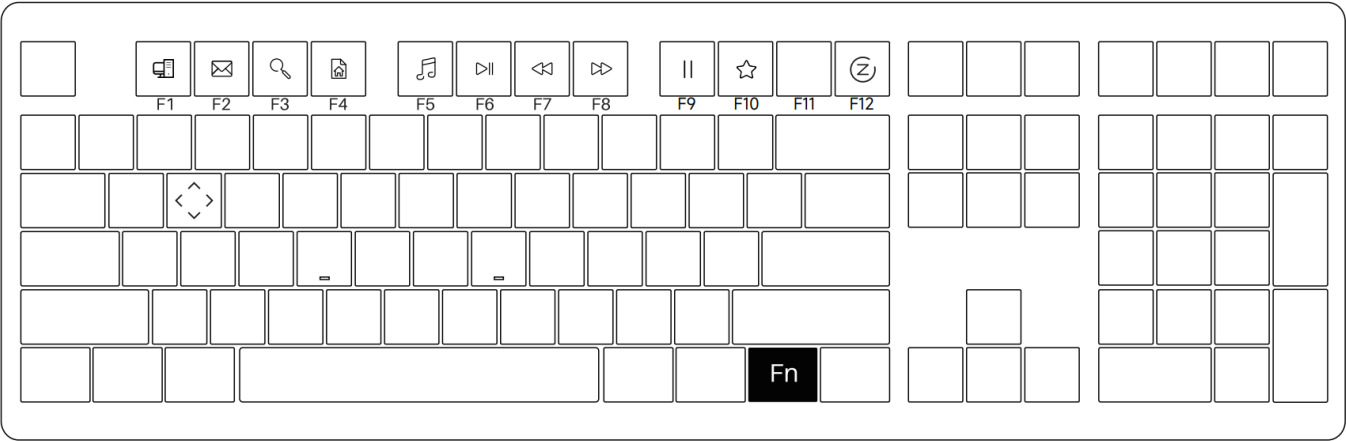
You can remove the saved Bluetooth device record from Windows, and then re-add the device through Bluetooth.



**Windows system:** please run the Bluetooth troubleshooter and try connecting again. It is recommended to try to use a Bluetooth 5.0 adapter on the computer to ensure a more stable connection. To run Windows Troubleshooter, right-click the Start menu and select "Settings." From there, go to Update and Security > Troubleshoot > Bluetooth, and then click "Run the Troubleshooter."

## MX108 Hot Keys

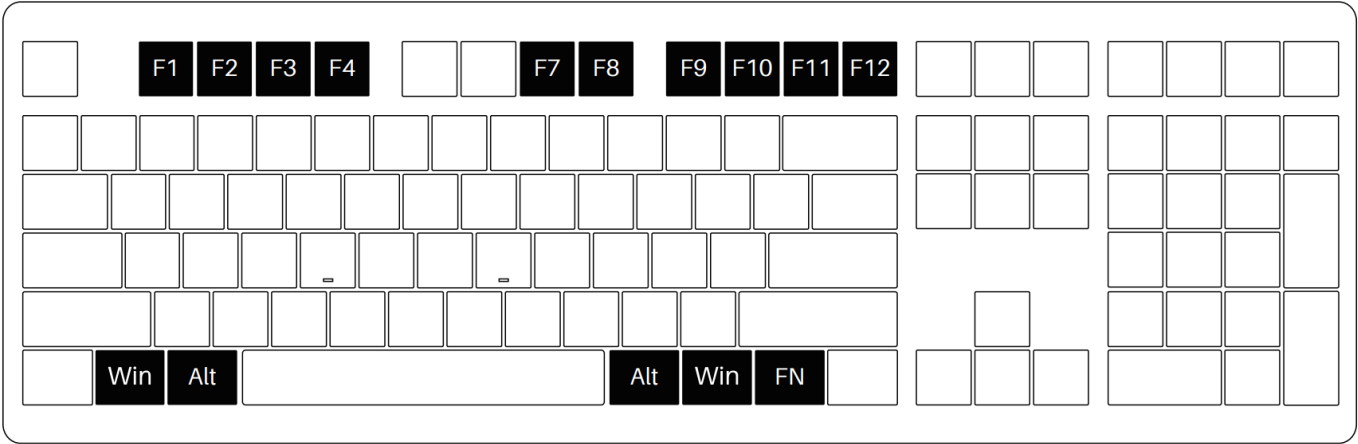
Fn+	F1	=	My computer
	F2		E-mail
	F3		Windows search
	F4		Browser homepage
	F5		Multimedia player
	F7		Previous song
	F8		Next song
	F9		Stop
	F10		Bookmark
	F12		One-Key Hibernate
	W		Swap W A S D with ↑ ↓ ← →



**MX108 System Commands (Mac)**

<b>F1</b>	Decrease display brightness	<b>F7</b>	Skip back (Audio)	<b>F11</b>	Volume down
<b>F2</b>	Increase display brightness	<b>F8</b>	Pause/Play (Audio)	<b>F12</b>	Volume up
<b>F3</b>	Open mission control	<b>F9</b>	Skip forward (Audio)	<b>Left Win</b>	Option
<b>F4</b>	Activate Siri	<b>F10</b>	Mute	<b>Left Alt</b>	Command

<b>Fn + (F1 F12)</b>
F1 F12



**MX108 System Commands (Windows)**

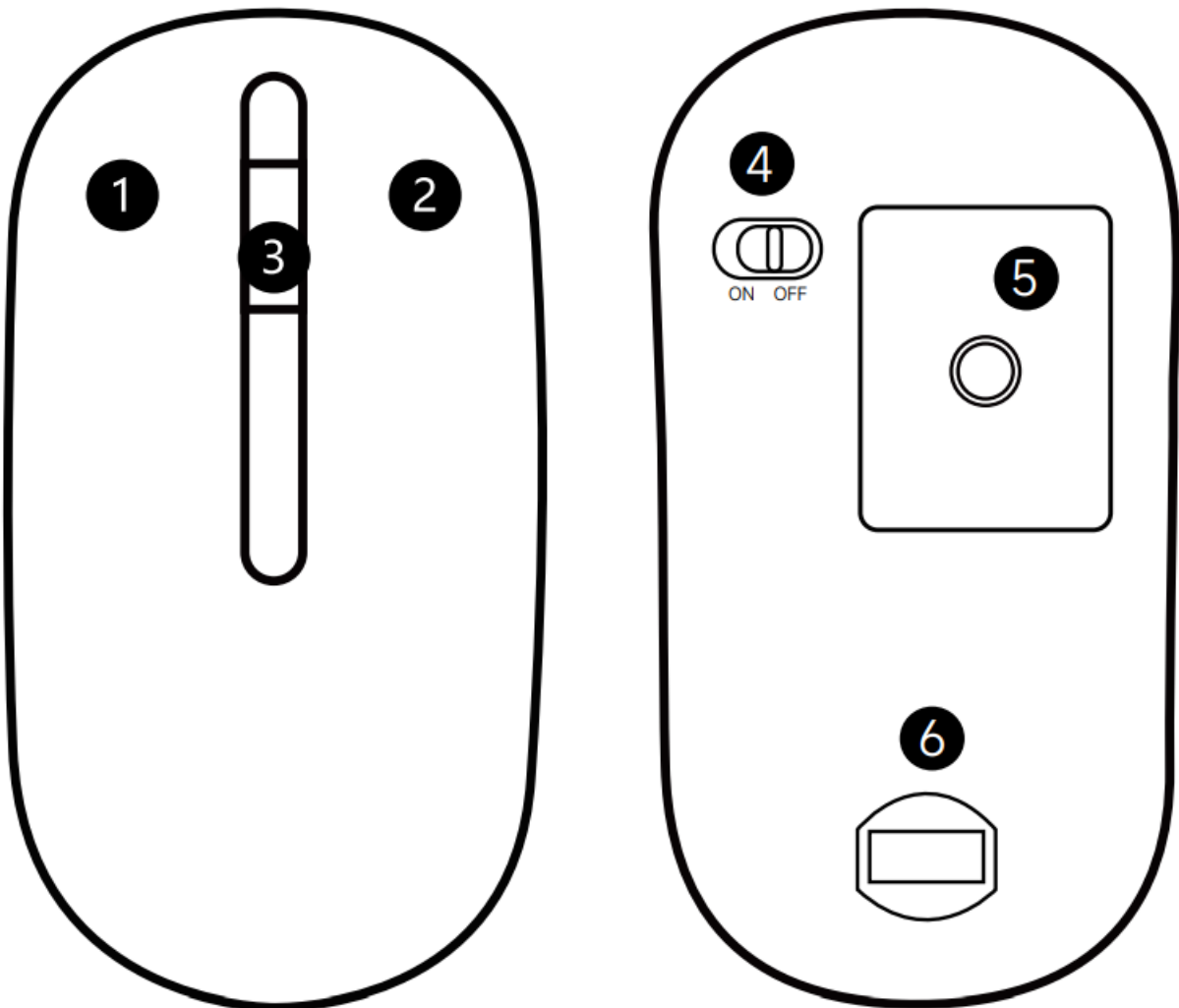


for 3 seconds to enter pairing mode, with the three indicator lights flashing quickly, and insert the USB receiver. Once pairing is successful, the LED indicator lights will return to normal. If no available device is found within 30 seconds, the three LED indicator lights will turn off, and the keyboard will enter sleep mode.

## MX108 Bluetooth + 2.4G Wireless Mouse Overview

### Specifications

1. Left Click
2. Right Click
3. Scroll Click
4. Power Switch
5. Mode Switch
6. 2.4G Receiver Slot



<b>Model</b>	MX108	<b>Mode</b>	BT + 2.4G Wireless
<b>Length</b>	114mm	<b>Voltage</b>	Built-in lithium battery: 3.7V/300m AH
<b>Width</b>	33mm	<b>Charge</b>	USB 5.0V
<b>Height</b>	60mm	<b>Polling Rate</b>	Bluetooth: 133Hz 2.4G: 125Hz
<b>Weight</b>	≈84g	<b>Wireless Distance</b>	10m 360°
<b>LED Indicator</b>	Red	<b>DPI</b>	Default 1200
<b>Mode Switch</b>	Short press to switch to 2.4G mode. (The indicator light will be green) Short press again to switch to Bluetooth mode. (The indicator light will be blue)	<b>2.4G Pairing</b>	Press left and right clicks to power on. (The green indicator flashes quickly)
		<b>Bluetooth Pairing</b>	Press and hold the pairing button for 3 seconds to enter pairing mode. (Pairing duration is 2 minutes)
<b>Operating Systems</b>	WIN2000/Win7/Win8/Win10/ Android/ IOS/Mac	<b>Key Functions</b>	1. Left/Right click 2. Power switch/Mode switch 3. Scroll click

## MONSGEEK Warranty and Service Statement

- MONSGEEK offers a One-Year warranty for customers in mainland China. For other regions, please contact your seller (MonsGeek distributor) for specific warranty details.
- If the warranty period expires, customers are responsible for repair costs.  
MONSGEEK provides instructions for self-repair if preferred, but users assume full responsibility for any losses

incurred during the process.

3. Disassembling the keyboard without manufacturer/seller's instruction will void the warranty immediately.
4. Return and warranty policies may vary across platforms and are subject to the specific distributor's terms at the time of purchase.

### Troubleshooting Bluetooth Connectivity Issues for MX108 (Failed Connections or Intermittent Connections)

1. Turn the power ON switch, make sure that the keyboard is fully charged (see indicator LED), and check to see if 2.4G mode is working, if it works, long press the left Win + right Win for 5 seconds to reset the device and try again.

### Customer support



[nstagram.com/akkogear](https://www.instagram.com/akkogear)



[facebook.com/akkogear](https://www.facebook.com/akkogear)



[tiktok.com/@akkogear](https://www.tiktok.com/@akkogear)

**Company:** Shenzhen Yinchon Technology Co., Ltd

**Address:** 33 Langbi Rd, Bitou Community 1st Industrial Zone, Bao'an District, Shenzhen, China

**Tel:** 0755-23216420

**Website:** [www.monsgeek.com](http://www.monsgeek.com)

**Origin:** Shenzhen, China

**Precautions Man:** made damage is not limited to immersion, falling off, and pulling off the wires with excessive forces, etc.







**WARNING:** Water Beverage Can't Be Poured Into The Keyboard.





[MONSGEEK MX108 Multi Device Wireless Keyboard and Mouse Combo](#) [pdf] User Manual  
MX108 Multi Device Wireless Keyboard and Mouse Combo, MX108, Multi Device Wireless Key  
board and Mouse Combo, Device Wireless Keyboard and Mouse Combo, Wireless Keyboard a  
nd Mouse Combo, Keyboard and Mouse Combo, Mouse Combo

## References

-  [Akko \(@akkogear\) • Instagram photos and videos](#)
-  [TikTok - Make Your Day](#)
-  [- MonsGeek](#)
-  [MonsGeek - Make Cool Gears Accessible.](#)
- [User Manual](#)