



monport D70 Rotary Axis Chuck Attachment for Laser Engraving Machine User Manual

[Home](#) » [monport](#) » monport D70 Rotary Axis Chuck Attachment for Laser Engraving Machine User Manual 

monport D70 Rotary Axis Chuck Attachment for Laser Engraving Machine



Contents

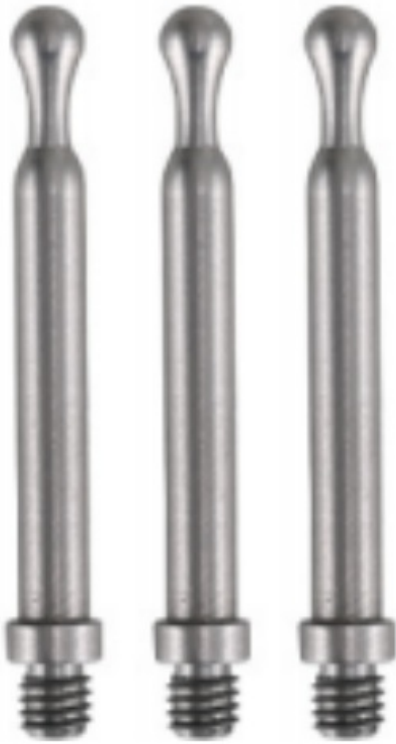
- 1 Packing list
- 2 Product use introduction
- 3 LightBurn software use
- 4 Notes
- 5 Some suggestions
- 6 Customer Support
- 7 Documents / Resources
 - 7.1 References

Packing list

- Chuck body assembly



- Chuck claw *3



- Hexagonal Plate Handle *2



- chuck clamp*2



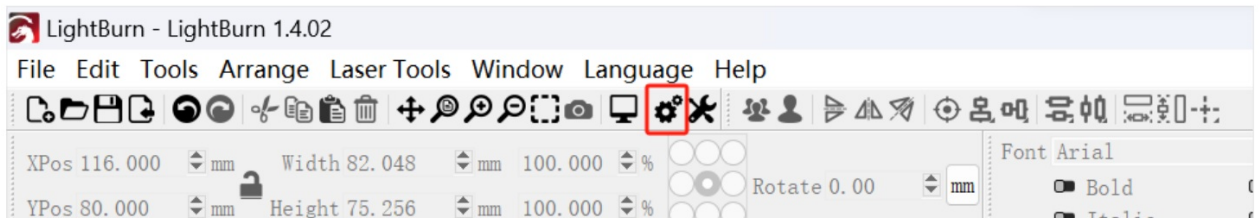
- Rotary Chuck User Manual



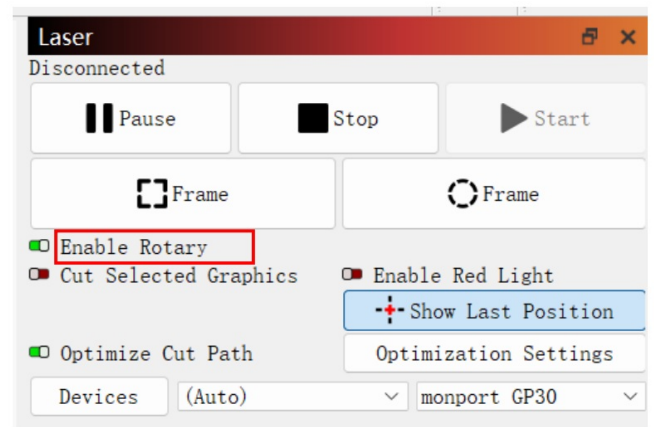
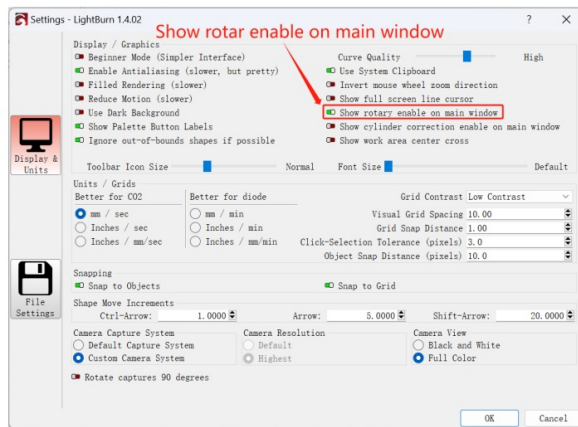
- Ladder jaws*3 Screw *6



Product use introduction

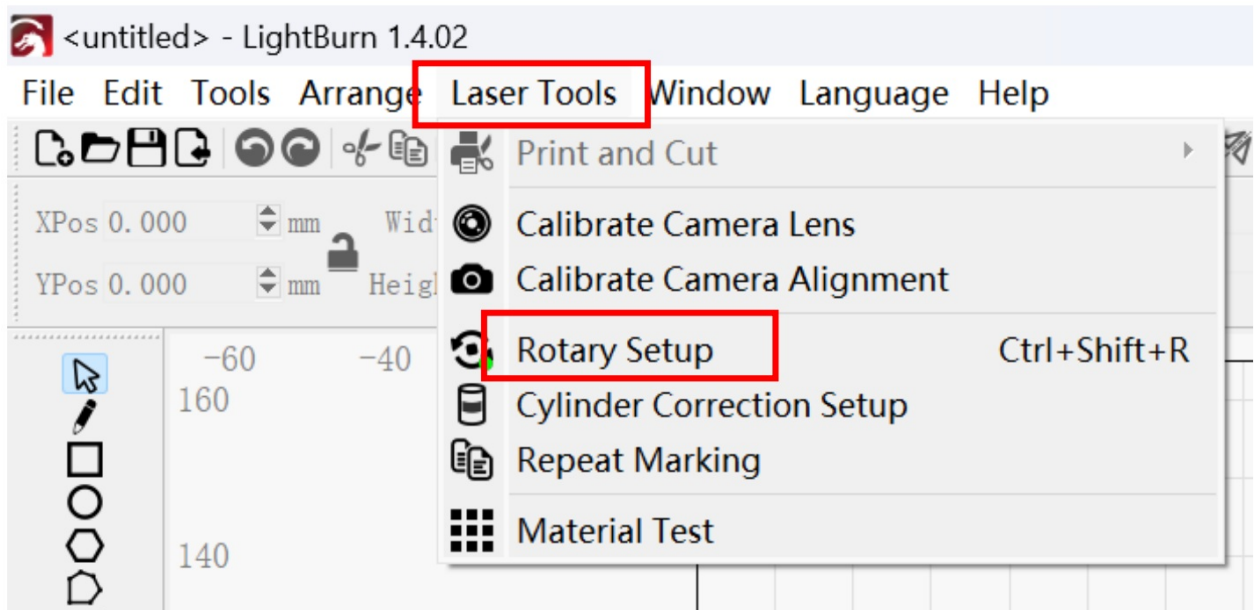


2. In the settings window, open the “Show rotation in main window to enable” button and click OK.

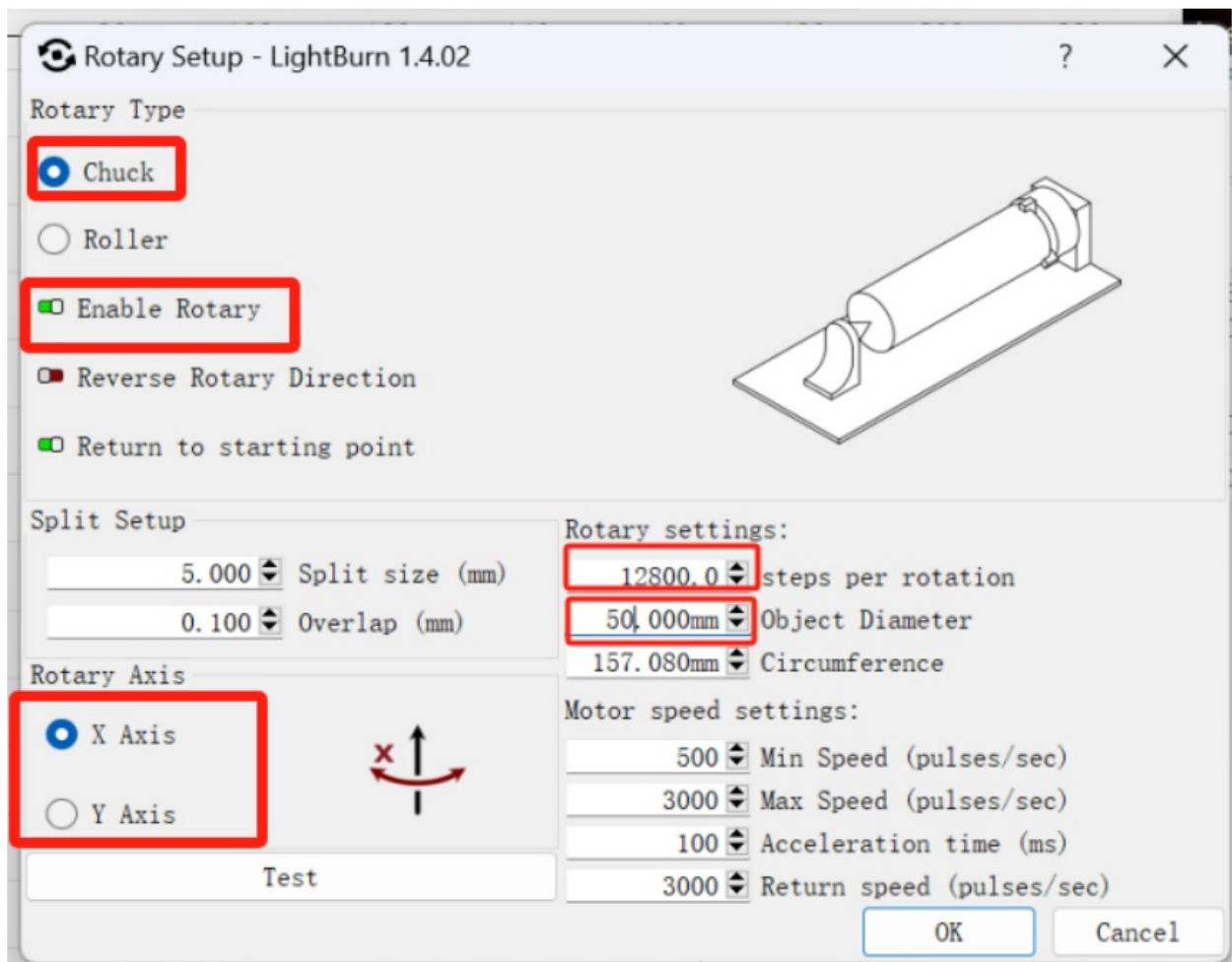


2. Open the Rotation Settings window and set the parameters

1. Open the Rotation Settings window: click “Laser Tools” on the toolbar, then click “Rotary Setup”

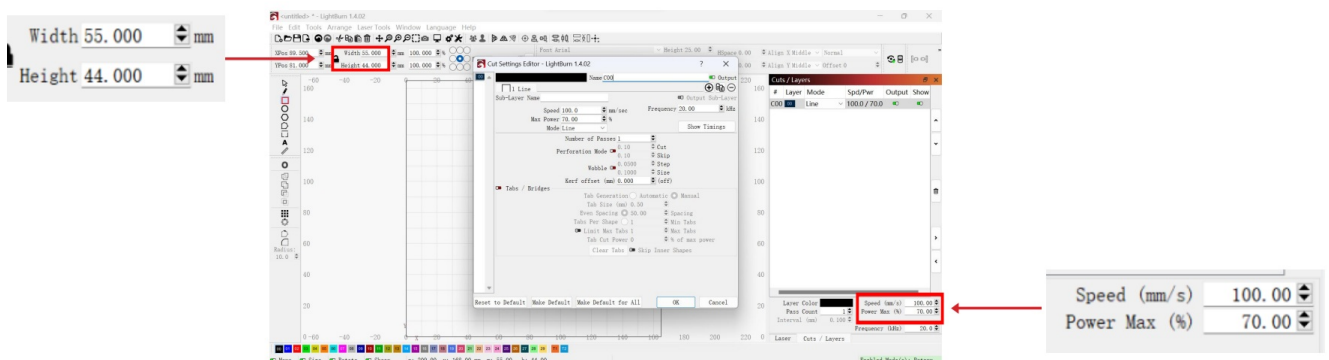


2. Set the correct parameters in the rotation setting window: as shown in the figure

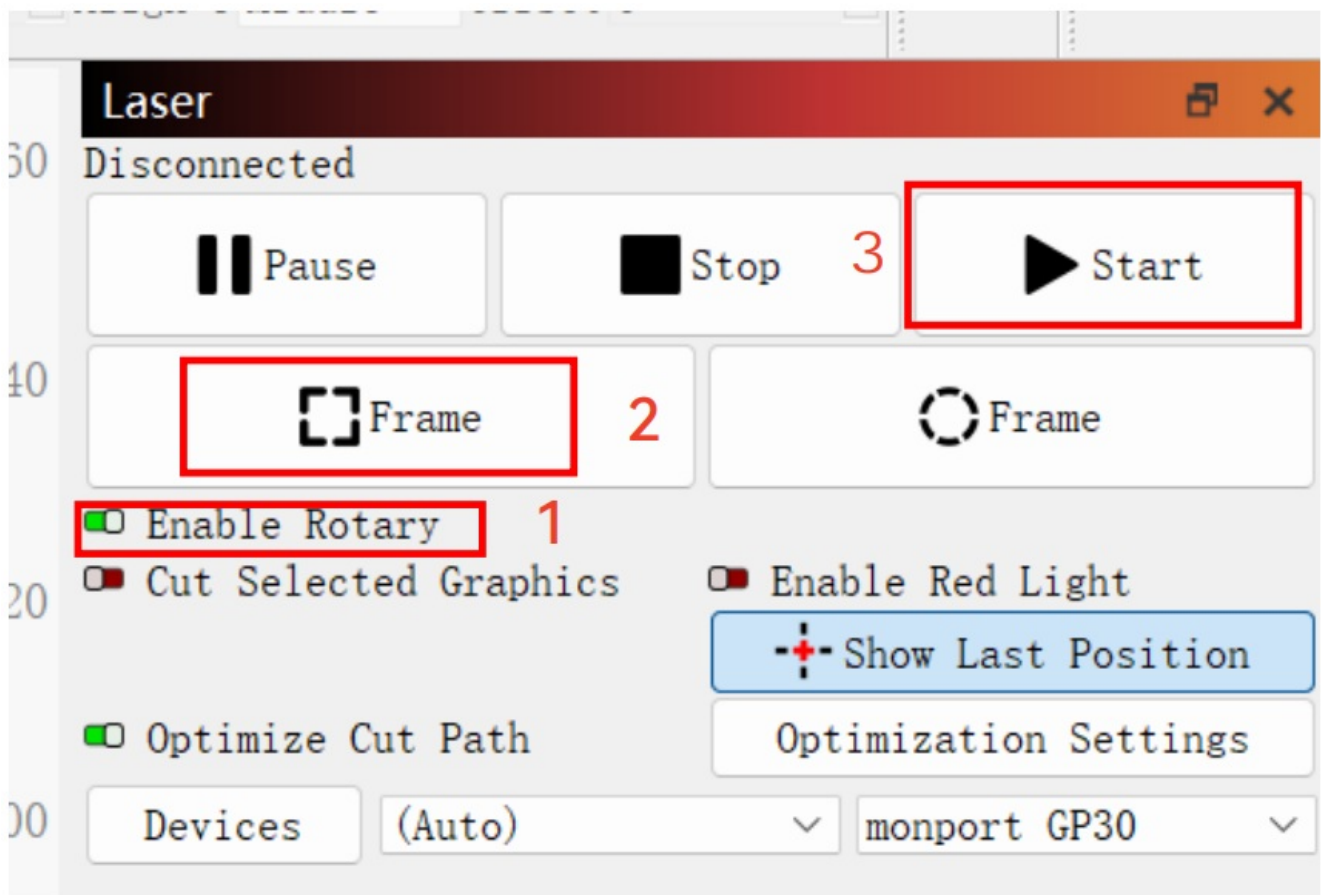


Steps:

1. Select the type of rotation: Chuck
 2. Open "Enable Rotary"
 3. Select "Y-axis" or "X-axis" rotation axis, depending on the direction of your rotation axis placement
 4. Enter "Steps Per Rotation" Values: 12800
 5. Enter your object parameters: the actual measured diameter or circumference of the object to be measured.
3. Import the pattern you want to engrave, set the size of the pattern, and set the power and speed of the engraving.



4. You can click "Frame" to preview the position of the engraving pattern, and then move the laser head to the desired position. click "Start" when you have finished setting.



Notes

1. Make sure you have placed the chuck module parallel to the working area of the engraving machine before rotating the engraving, otherwise the pattern engraved on the object may be deformed
2. Try to make the three contact surfaces of the object under test and the jaw assembly flat
3. Do not forget to update the parameters of the measured object in the rotation setting window every time you change the measured object
4. Turn off "Enable Rotary" in the main window when plane engraving, otherwise the engraving pattern will be deformed
5. If you are using this product for the first time, please read the accompanying materials carefully to improve your experience. If you do not use the product in accordance with the instructions and requirements or due to mishandling of the product, etc., MONPORT shall not be liable for any loss resulting therefrom.
6. MONPORT has carefully checked the contents of the manuals, but there may still be errors or omissions. MONPORT is committed to continually improving the functionality of its products and the quality of its services, and therefore reserves the right to change any manuals and the products or software described in the contents of the manuals without prior notice.

Some suggestions

Safety Information

1. Keep this device clean and free of potentially flammable or reflective dust and swarf.
2. **DO NOT** place body parts in or near the engraving path.
3. **ALWAYS** wear appropriate personal protective equipment such as protective eyewear when operating your

laser. If this device is being used on an open bed, it is also recommended to secure the worksite or erect protective screens around the laser path to prevent injury to passersby.

4. **DO NOT** use this device with items too wide or long for its rails.
5. **DO NOT** assemble or disassemble this device without proper training.

Installation

Connect the rotary device's connection to the Y-axis port inside the engraver or the rotary axis port Net Weight behind your engraver.

Operation

1. Expand the chuck's clamp by inserting its key and turning counterclockwise.
2. Place your workpiece into the chuck. Secure it in place by closing the chuck around it, turning the check key clockwise.
3. Use your engraver's control panel or your engraving software to add your design.

Maintenance

Clean this device with a soft moist cloth to remove any dust or debris that may accumulate. Allow time for any moisture to air dry before further use.


Customer Support



If you do have any questions while reading the manual or setting up your machine, feel free to give us a call at +1 (213)554-8829 or email support@monportlaser.com and a member of our technical support Specifications team would be happy to answer your questions.



Documents / Resources

	<p>monport D70 Rotary Axis Chuck Attachment for Laser Engraving Machine [pdf] User Manual</p> <p>D70, D70 Rotary Axis Chuck Attachment for Laser Engraving Machine, Rotary Axis Chuck Attachment for Laser Engraving Machine, Axis Chuck Attachment for Laser Engraving Machine, Chuck Attachment for Laser Engraving Machine, Laser Engraving Machine, Engraving Machine, Machine</p>
--	--

References

- [User Manual](#)

[Manuals+](#), [Privacy Policy](#)

This website is an independent publication and is neither affiliated with nor endorsed by any of the trademark owners. The "Bluetooth®" word mark and logos are registered trademarks owned by Bluetooth SIG, Inc. The "Wi-Fi®" word mark and logos are registered trademarks owned by the Wi-Fi Alliance. Any use of these marks on this website does not imply any affiliation with or endorsement.