



MONOGRAM ZIDI240 Double-Drawer Built-In Refrigerator Instruction Manual

[Home](#) » [MONOGRAM](#) » MONOGRAM ZIDI240 Double-Drawer Built-In Refrigerator Instruction Manual 



MONOGRAM

**INSTALLATION
INSTRUCTIONS**

Double-Drawer Built-In Refrigerator
[MONOGRAM.COM](https://www.monogram.com)

Contents

- [1 Safety Information](#)
- [2 Important Information](#)
- [3 Design Guide FOR MODELS ZIDI240 AND ZIDS240](#)
- [4 Installation Instructions](#)
- [5 Notes](#)
- [6 Documents / Resources](#)
 - [6.1 References](#)
- [7 Related Posts](#)

Safety Information

BEFORE YOU BEGIN

Read these instructions completely and carefully.

- **IMPORTANT** – Save these instructions for the local inspector's use. Observe all governing codes and

ordinances.

- Note to Installer – Be sure to leave these instructions with the Consumer.
- Note to Consumer – Keep these instructions with your Owner's Manual for future reference.

If you received a damaged refrigerator, you should immediately contact your dealer or builder.

Skill Level – Installation of this refrigerator requires basic mechanical, carpentry, and plumbing skills. Proper installation is the responsibility of the installer. Product failure due to improper installation is not covered under the GE Appliance Warranty. See the Owner's Manual for warranty information.



WARNING

Explosion Hazard. Keep flammable materials and vapors away from the refrigerator. Failure to do so can result in fire, explosion, or death.



WARNING

To reduce the risk associated with choking, do not allow children under 3 years of age to have access to small parts during the installation of this product.

For Monogram local service in your area, call 800.444.1845 or visit monogram.com.

For Monogram service in Canada, call 888.880.3030

For Monogram Parts and Accessories, call 800.444.1845 or visit monogram.com.

For Monogram Parts and Accessories in Canada, call 888.880.3030 or visit monogram.ca.

CONNECTING ELECTRICITY



WARNING



Electrical Shock Hazard.

Plug into a grounded 3-prong outlet.

Do not remove the ground prong.

Do not use an adapter.

Do not use an extension cord.

Failure to follow these instructions can result in death, fire, or electrical shock.

Do not, under any circumstances, cut or remove the third (ground) prong from the power cord.

For personal safety, this appliance must be properly grounded.

The power cord of this appliance is equipped with a 3-prong (grounding) plug which mates with a standard 3-prong (grounding) wall outlet to minimize the possibility of electric shock hazard from this appliance.

Have the wall outlet and circuit checked by a qualified electrician to make sure the outlet is properly grounded?

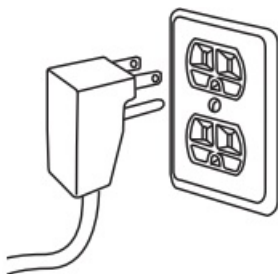
Where a standard 2-prong wall outlet is encountered, it is your personal responsibility and obligation to have it replaced with a properly grounded 3-prong wall outlet. Do not use an adapter.

The refrigerator should always be plugged into its own individual electrical outlet which has a voltage rating that matches the rating plate.

A 115 Volt AC, 60 Hz, 15- or 20-amp fused, grounded electrical supply is required. This provides the best performance and also prevents overloading house wiring circuits which could cause a fire hazard from overheated wires.

Never unplug your refrigerator by pulling on the power cord. Always grip the plug firmly and pull it straight out from the outlet.

Immediately discontinue the use of a damaged supply cord. If the supply cord is damaged it must be replaced by a qualified service professional with an authorized service part from the manufacturer.



When moving the refrigerator away from the wall, be careful not to roll over or damage the power cord.



Important Information

ZIDI240 MODEL ONLY

- Custom handles
- Overlay panels
- Spacer panels
- Backer panels
- Screws

PARTS SUPPLIED

- Drawer side trims
- Optional black or stainless steel toekick

TOOLS REQUIRED

- Adjustable wrench
- Carpenter's glue (ZIDI240 model only)
- Screwdriver (ZIDI240 model only)

REFRIGERATOR LOCATION

- Do not install the refrigerator where the temperature will go below 55°F (12.7°C) because it will not run often enough to maintain proper temperatures.
- Do not install the refrigerator where the temperature will go above 100°F (37°C) because it will not perform properly.
- Do not install the refrigerator in a location exposed to water (rain, etc.) or direct sunlight.
- Install it on a floor strong enough to support it fully loaded.

 **WARNING**

 **EXCESS WEIGHT HAZARD**

Use two or more people to move and install a dual-drawer refrigerator. Failure to do so can result in back or another injury.

 **WARNING**

 **CUT HAZARD**

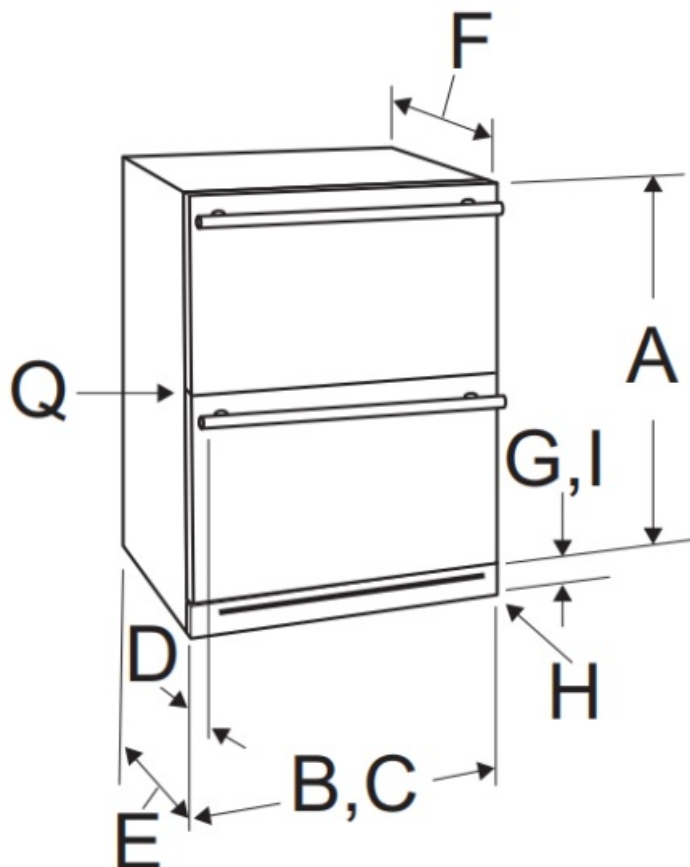
Cabinet edges along stamp/cut-out areas may be sharp. Avoid placing hands, fingers, or other appendages near these areas. Failure to do so can result in cuts.

IMPORTANT: Handle with care when moving a dual-drawer refrigerator to avoid either damaging the refrigerant tubing or increasing the risk of a leak.

IMPORTANT: When moving the dual-drawer refrigerator, never tilt it more than a 45° angle. This could damage the compressor and the sealed system. If the dual-drawer refrigerator has been placed in a horizontal position for any period of time, wait one hour before plugging in the refrigerator to allow the refrigerant to settle.

Design Guide FOR MODELS ZIDI240 AND ZIDS240

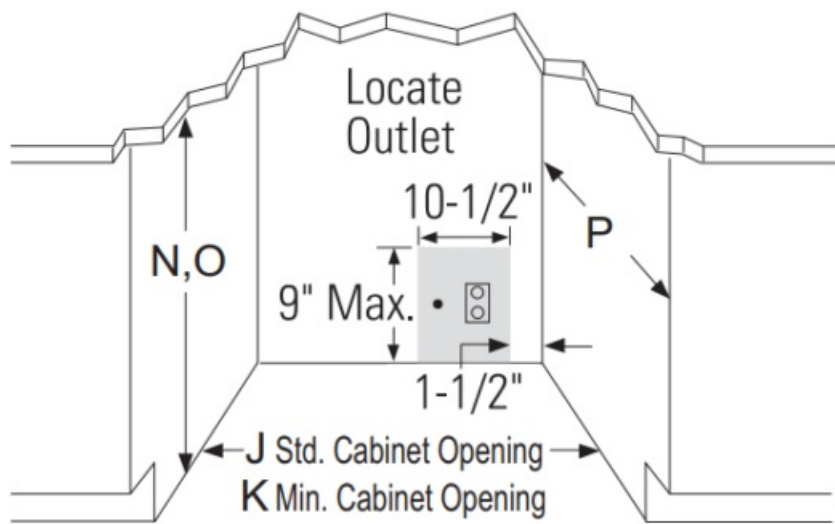
THE INSTALLATION SPACE



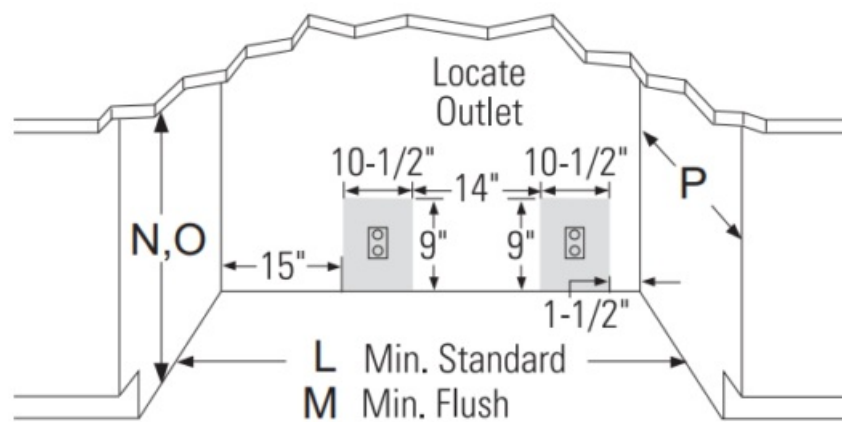
NOTE:

Custom Handles may vary. Monogram Handle Depths see D-Handle Depth Range.

INGLE PRODUCT INSTALLATION



SIDE BY SIDE PRODUCT INSTALLATION



	Description	Double Drawer Custom ZI DI240 Dimensions	Double Drawer ZIDS240 D imensions
A	Height (Level leg down) includes a hinge	34-5/16" (871 mm)	34-5/16" (871 mm)
B	Width (Including door)	23-5/8" (600 mm)	23-7/16" (596 mm)
C	Width without door	23-7/16" (596 mm)	23-7/16" (596 mm)
D	Handle Depth Range unless Custom Handle	2-1/8", 2-5/8" (54, 66.7 mm)	2-1/8", 2-5/8" (54, 66.7 mm)
E	Depth including Door (& custom panels) with out Handle	24-1/2" (622 mm)	23-3/8" (594 mm)
F	Depth without door	21-3/4" (552 mm)	21-3/4" (552 mm)
G	Toe Kick Height (floor to bottom of the door)	4"	4"
H	Level Leg Max Adjustment	1"	1"
I	Decorative Toe Kick Part Dimension	23-7/16" W x 3-1/8" H (596 W x 79 H mm)	23-7/16" W x 3-1/8" H (596 W x 79 H mm)
J	Standard Cabinet Opening Single Width FLU SH	24"	24"
K	Minimum Cabinet Opening Single Width	23-3/4"	23-3/4"
L	Minimum Cabinet Opening Side by Side Widt h	47-1/2"	47-1/2"
M	Standard Cabinet Opening Side by Side Widt h FLUSH	Not Applicable	48"
N	Maximum Cabinet Opening Height	35"	35"
O	Minimum Cabinet Opening Height	34.5"	34.5"
P	Standard Cabinet Opening Depth	24"	24"
Q	Gap between drawers	1/4" (6.4 mm)	9/16" (15 mm)
R	Depth with door open 90 or drawer fully open	42-1/2" (1079 mm)	41-3/8" (1051 mm)
S	Height with the top cover (Level leg down)	Not Applicable	Not Applicable

A 120 volt 60Hz., 15 or 20 amp power supply is required. An individual properly grounded branch circuit or circuit breaker is recommended. Install a properly grounded 3-prong electrical receptacle recessed into the back wall as shown. Electrical must be located on the rear wall as shown.

Additional SpecificationsTHE INSTALLATION SPACE

IMPORTANT: Double-Drawer Refrigerators are designed to be built-in only. They cannot be used free-standing. The cutout dimensions allow for full drawer extension.

- **NOTE:** GFCI (ground fault circuit interrupter) is not recommended.
- Products must operate from separate, properly grounded receptacles.

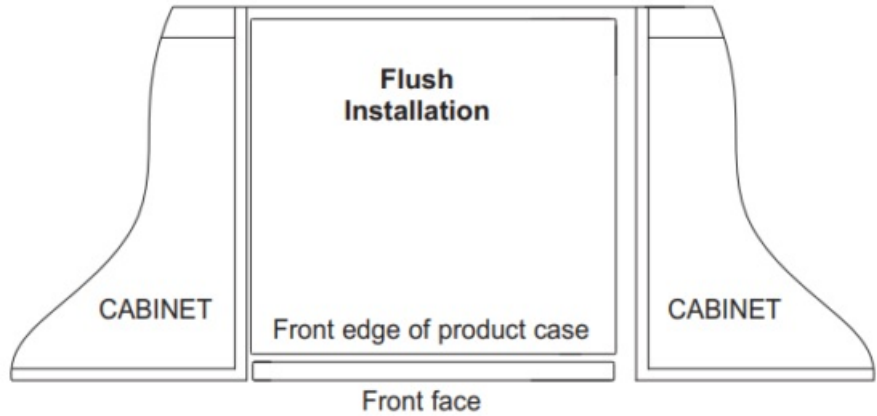
Black or Stainless Steel Toekick Options

- These products are shipped with a stainless steel toekick and a black toekick. For shipping purposes, one of the toe kicks will be secured to the back of the unit, and the second will be installed on the unit. Keep the unused toekick and any unused parts for future use.

Single Product Installation:

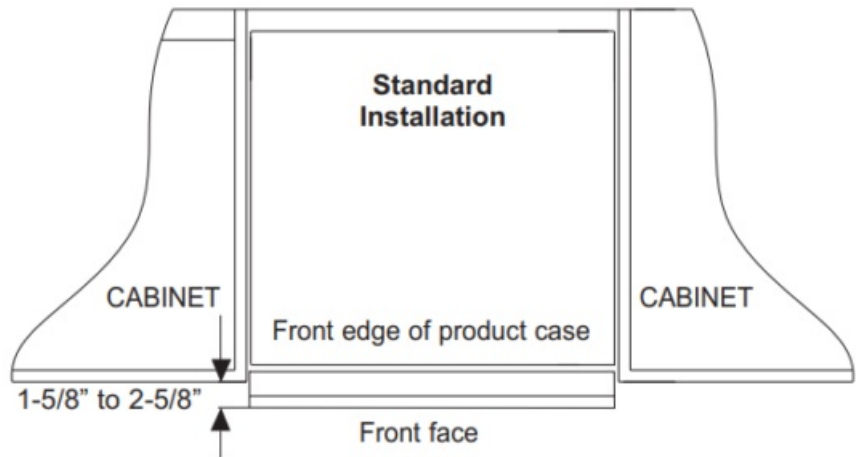
For a flush installation ZIDS240 models only

install the product so the front face will be flush with the adjacent cabinets.



For a standard installation

The product must be installed so the front face will project forward of the adjacent cabinets and align to custom cabinet fronts. The distance forward from the adjacent cabinet is typically between the dimensions shown. The opening between cabinets must be a minimum of dimension K.



SIDE-BY-SIDE INSTALLATIONS

For a complete refreshment center, Install a fresh food refrigerator beside a Double-Drawer refrigerator, Beverage Center, or Wine Chiller/Wine Reserve.

- A side-by-side installation requires minimum width openings depending on if the product will be flush or standard mounted and if there are stainless or custom panels. See the chart below.

Panel	Mount Depth Style	Minimum width Opening
Stainless	Flush	M
Stainless	Standard	L
Custom	Standard (only)	L

NOTE: In addition to this manual, reference the installation manual or other appliances to ensure product alignment, allow full door swing, and prevent interference with adjacent cabinetry. The adjacent product door hinge should be located away from the DoubleDrawer product to minimize interference.

For a flush installation ZIDS240 model only

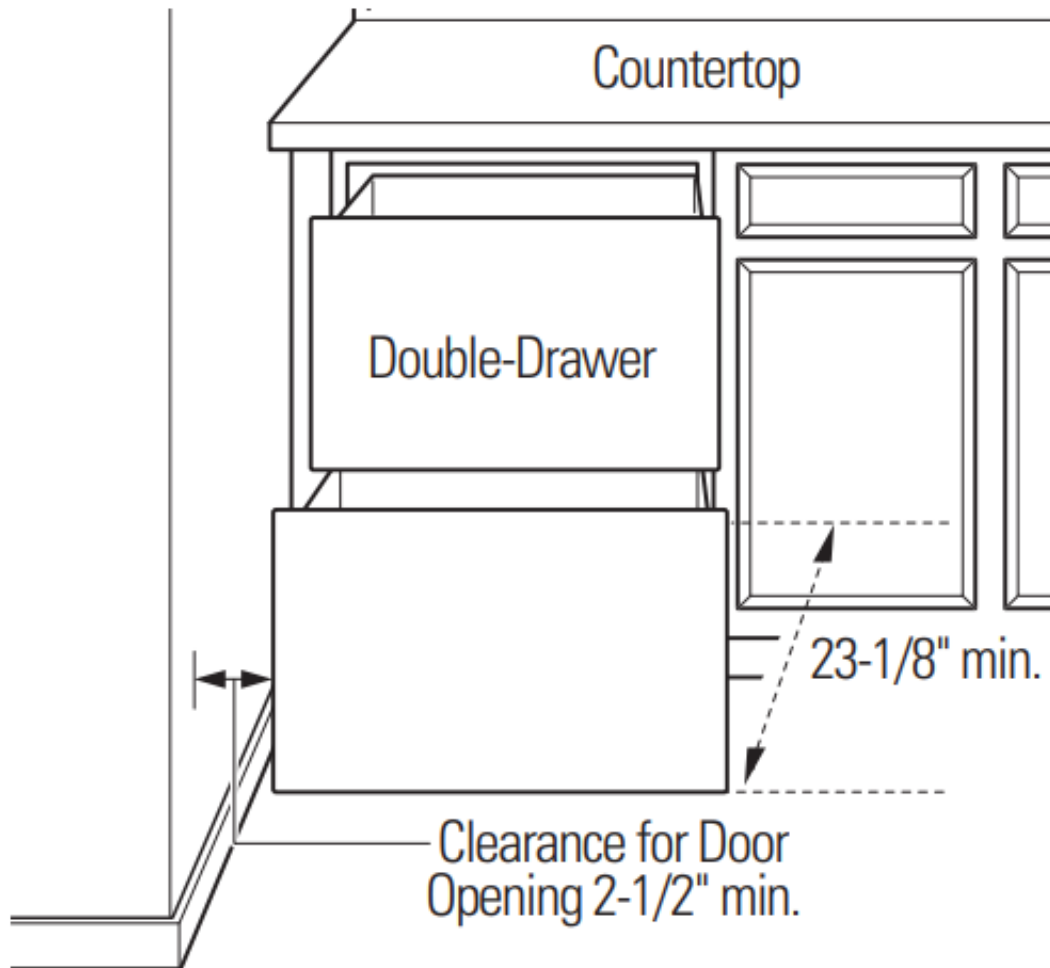
Install the product so the front face is flush with the adjacent cabinets and adjacent appliances. See chart for the minimum cut-out width M.

For a standard installation

The product must be installed so the front face will project forward of the adjacent cabinets and align to custom cabinet fronts and adjacent appliances. The distance forward from the adjacent cabinet is typically between the dimensions shown. The opening between cabinets must be a minimum of dimension L.

PRODUCT CLEARANCES ZIDS240

When installed in a corner:



Allow 2-1/2" min. clearance between Double-Drawer and adjacent cabinet, wall, or other appliances. Allow 22" min. clearance from the front for drawer opening.

NOTE: Clearances are based on the noted 2-1/8" handle standoff depth.

- Test the drawer openings. Carefully open and close the drawers. The drawers should not rub or catch on adjacent cabinetry. Notify the installer if the drawers make contact with cabinetry.

Choose the location:

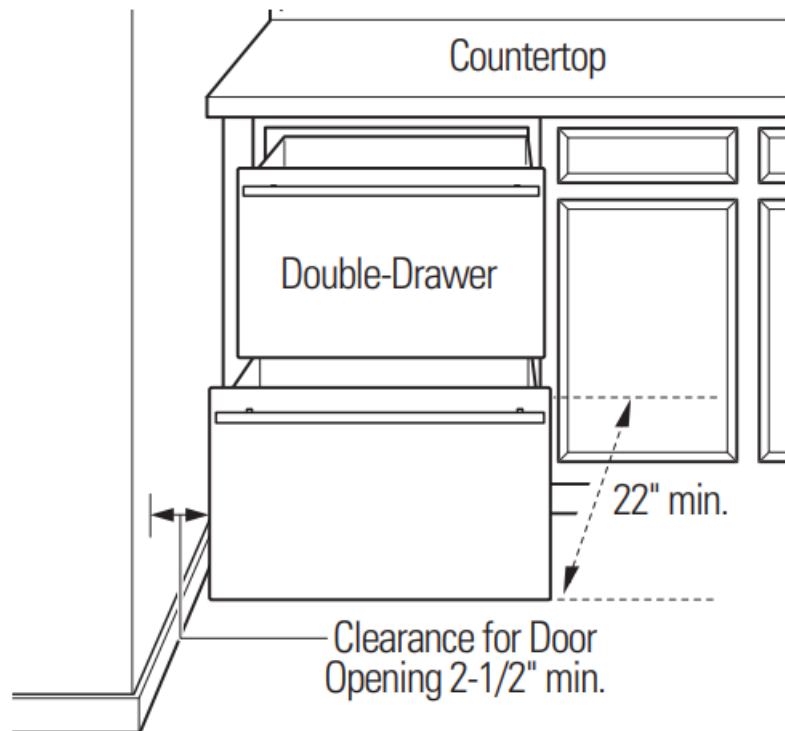
- These products may be closed in on the top and three sides as long as the front is unobstructed for air circulation and proper access to the drawers.
- Do not install these products where the temperature will go below 55°F (13°C) or above 100°F (37°C).
- These products are not designed to be stacked one over the other.

CARING FOR YOUR STAINLESS STEEL

- Before installation or first use, we strongly advise that you polish the stainless steel exterior and handle with a commercially available stainless steel cleaner such as Stainless Steel Magic.™ To preserve and protect the fine finish, we also strongly advise that you apply stainless steel cleaner monthly.

PRODUCT CLEARANCES ZIDI240

When installed in a corner:



Allow 2-1/2" min. clearance between Double-Drawer and adjacent cabinet, wall, or other appliances. Allow 23-1/8" min. clearance from the front for drawer opening.

NOTE: Custom handle clearances may vary depending on the standoff of the custom handles.

- Test the drawer openings. Carefully open and close the drawers. The drawers should not rub or catch on adjacent cabinetry. Notify the installer if the drawers make contact with cabinetry.

NOTE: When installing custom panels and handles, use the above clearances as a general guide but adjust according to the installation.

Choose the location:

- These products may be closed in on the top and three sides as long as the front is unobstructed for air circulation and proper access to the drawers.
- Do not install these products where the temperature will go below 55°F (13°C) or above 100°F (37°C).
- These products are not designed to be stacked one over the other.

STAINING WOOD PANEL FRONTS

The drawer fronts are unfinished cherry wood. During use, oil from hands may accumulate and stain the wood.

- The drawer fronts may be stained and sealed to match adjacent cabinetry.
- Apply the stain and sealer according to the manufacturer's instructions. To avoid unpleasant odor, keep the

door open to ventilate and allow the stain/ sealer to dry completely before using the product.

Installation Instructions

STEP 1

REMOVE PACKAGING AND INSTALLATION PARTS

- Remove corner blocks and foam drawer stops
- Remove all packing material, tape, and protective plastic coverings.



WARNING

Small objects are a choking hazard for children. Remove and discard any parts not used.



WARNING

TIP-OVER HAZARD



These appliances are top-heavy, especially with any doors open, and must be secured to prevent tipping forward which could result in death or serious injury.

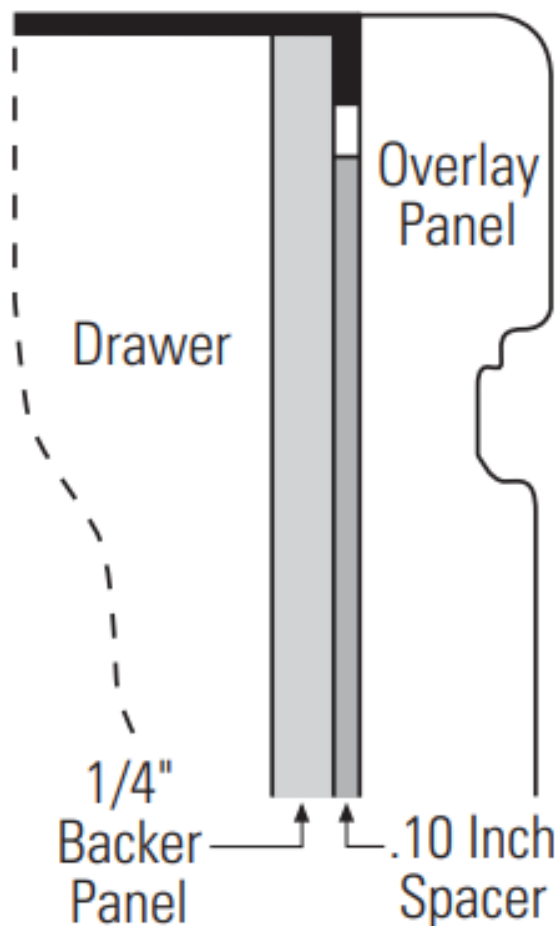
Read and follow the entire installation instructions for securing the appliance with the anti-tip system.

STEP 2

INSTALL CUSTOM 3/4" DRAWER PANELS AND HANDLES (ZIDI240 model only)

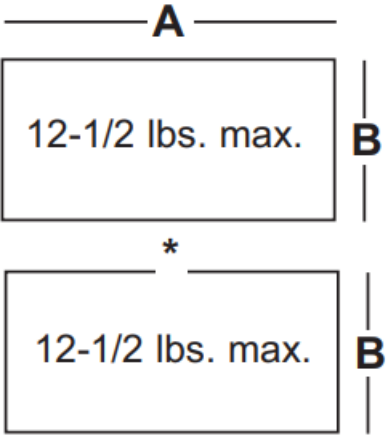
3/4" Overlay Panel Dimensions

Model ZIDI240 requires field-installed overlay drawer panels.



- The overlay panels must be secured to 1/4" thick backer panels that slide into the trims. A .10" thick spacer panel must be placed between the overlay and backer panels.
- Custom handles of your choice, supplied by your cabinet maker, must be installed on these overlay panels. Countersink all screws into the backer panels. Screws cannot protrude from the backer panels.

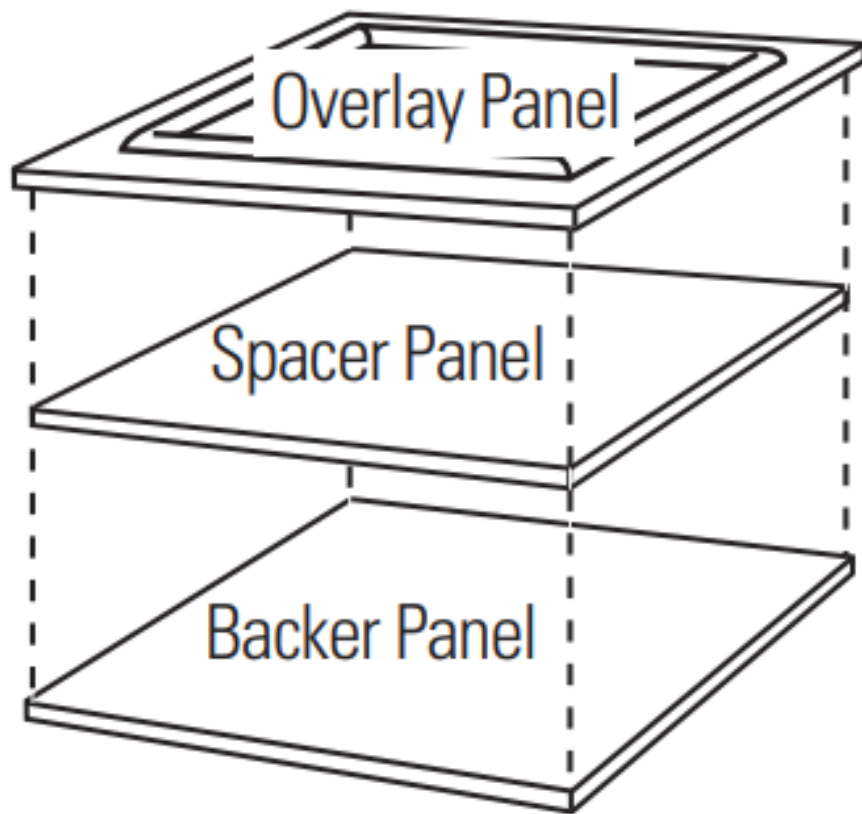
IMPORTANT NOTE: Maximum total weight for custom drawer panels is 25 pounds (12-1/2 pounds maximum for each drawer).



3/4" Overlay Panel Dimensions (in inches)

	A (Width)	B (Height)
1/4" Backer	23-3/16"	14-11/16"
0.10" Spacer	22-1/2"	14-3/16"
3/4" Overlay	23-5/8"	15-1/16"

*Maintain a 1/4" min. gap between top and bottom drawer panels.
 Assemble overlay panels with glue and screws.



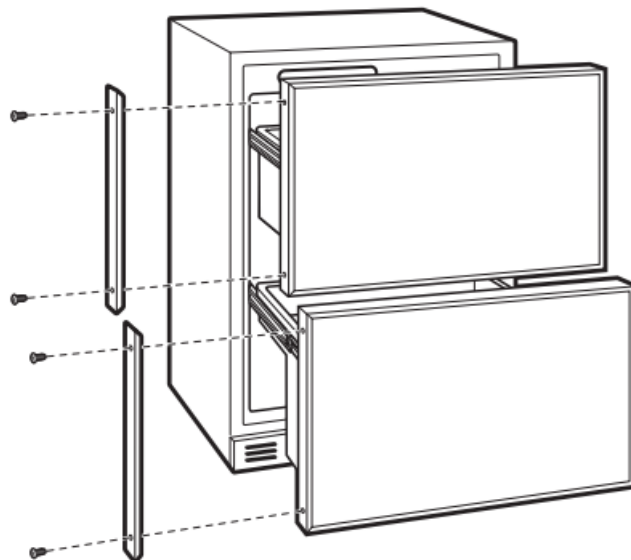
- Center spacer panel on the backer panel, left to right and top to bottom. Secure the panels with glue.
- Center the spacer/backer panel on the overlay panel. Secure with glue and screws. Countersink all screws into the backer panel.

STEP 2

INSTALL CUSTOM 3/4" DRAWER PANELS AND HANDLES (CONT.) (ZIDI240 model only)

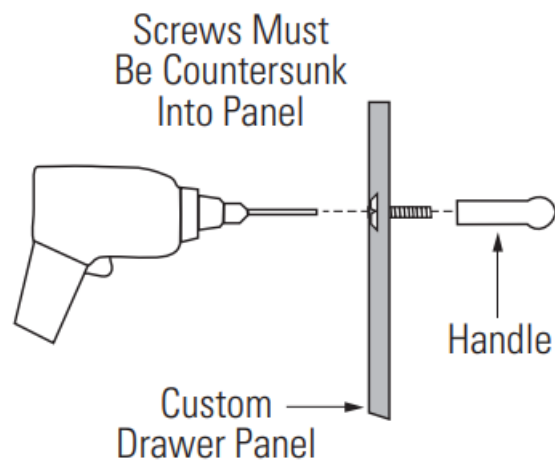
Install custom drawer panels and handles:

- Open drawers.
 - Remove 2 screws holding each trim; lift trims off.
- Retain screws.

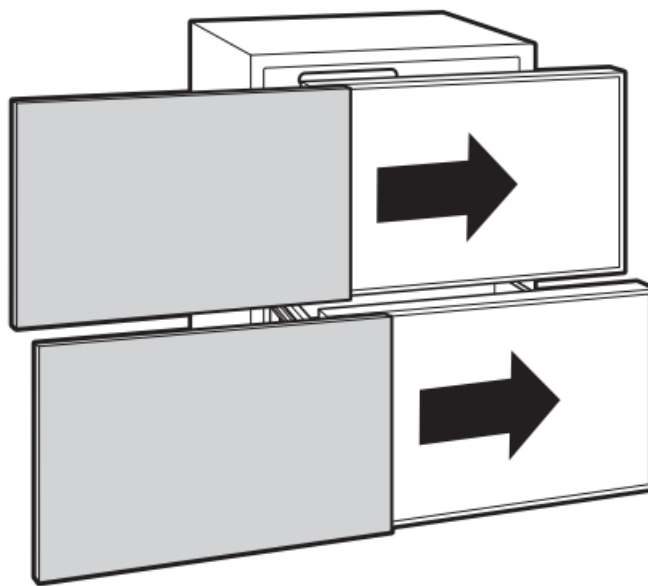


Custom handles of your choice, supplied by your cabinet maker, must be installed onto the overlay panels before

they are slid into the trims. Countersink all screws into the backer panels. Screws cannot protrude from the backer panels.



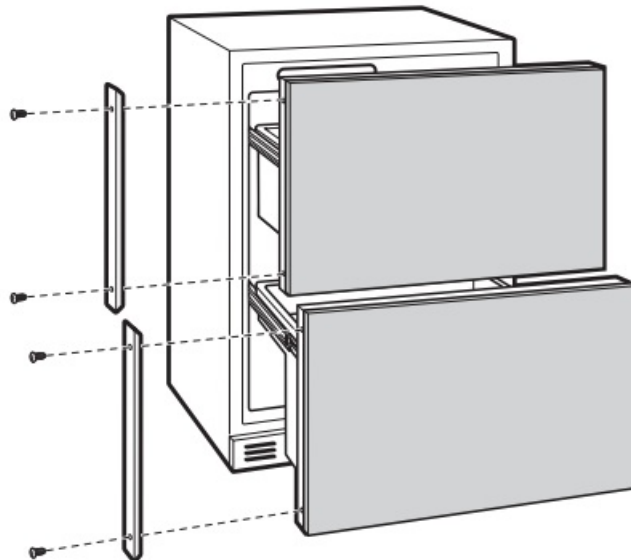
Slide overlay panels into the trims.



STEP 2

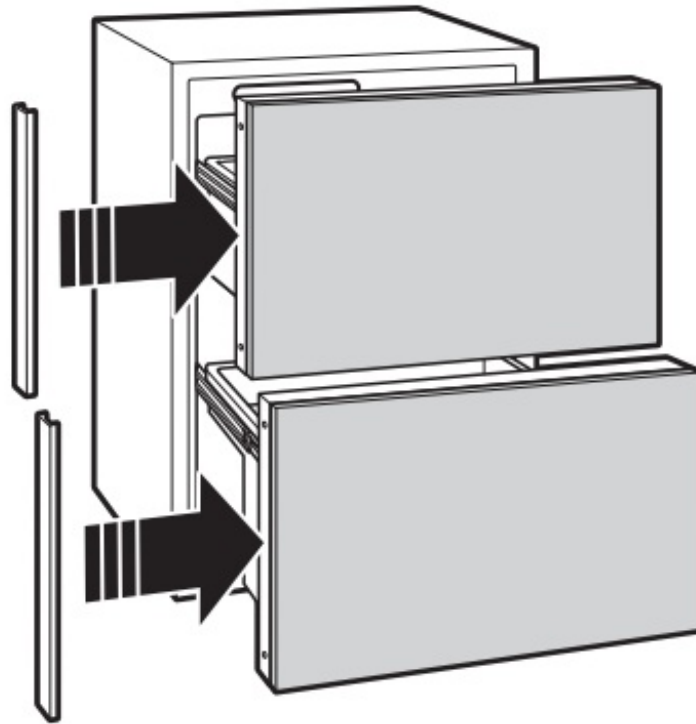
INSTALL CUSTOM 3/4" DRAWER PANELS AND HANDLES (CONT.) (ZIDI240 model only)

- Reinstall the side trims using the trim screws removed earlier.



- Place the brushed decorative covers over the side trim to hide the screw heads. Ensure side trim is aligned top

to bottom and front to back. Snap into place.



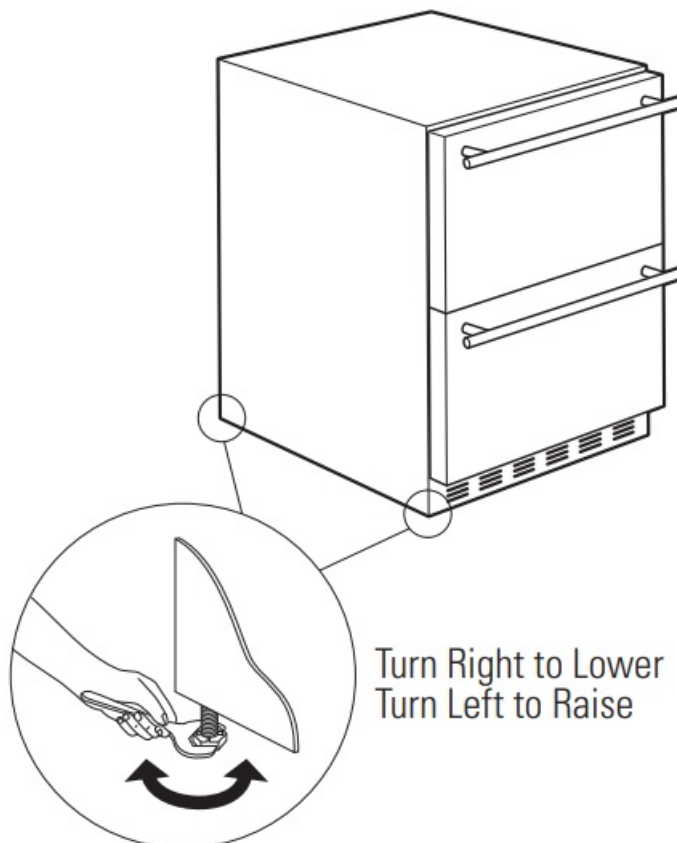
NOTE: For shipping purposes, the brushed decorative cover will be secured to the front of the unit.

STEP 3 LEVEL

Use an adjustable wrench to turn and raise or lower the leveling legs.

- Measure floor to countertop height inside the opening.

Adjust leveling legs until the product is approximately 1/8" less than countertop height.



INSTALLATION TIP:

Measure floor to underside of countertop inside the opening.

- If the room floor is higher than the floor inside the opening, adjust the rear leveling legs to approximately 1/8" less than the opening height. Screw front leveling legs all the way in to shorten the height at the front. This will allow you to slightly tip the unit into the opening. Once the unit is in the correct position, the front legs can be adjusted to level the product.

STEP 4 CONNECT POWER

- Connect the power cord plug to a properly grounded receptacle.
- Check to make sure power is on by opening a drawer to see if the interior light turns on.
- The interior fan runs all the time except when a drawer is open. See the Owner's Manual for further explanation of the fan.

**STEP 5
SLIDE THE PRODUCT INTO THE CUTOUT**

NOTICE: Do not push against the drawer panels with your knees. Do not push or lift the unit by the drawer handles. Damage may occur!

- Open one of the drawers and gently push the unit back into the opening with your hands against the sides. Be careful not to entangle the power cord.
- Check again to be sure the unit is level. Adjust the leveling legs until the unit is resting firmly against the bottom of the counter to prevent rocking or movement during operation.
- If alignment with adjacent cabinetry is an issue, use a shim to secure the unit against the underside of the countertop.

**STEP 6
SET TEMPERATURE CONTROLS**

- The temperature controls are preset. Refer to the Owner's Manual for more information. Allow 12–24 hours for the temperature to stabilize.

NOTE: The Double-Drawer Refrigerator operates very quietly. You may not notice the unit running, and when first installed, the fans and motor may not come on immediately – this is normal. If the display is lit and the light is working, the unit is operating.

Notes

NOTE:	
While performing installations described in this book, safety glasses or goggles should be worn.	Product improvement is a continuing



MONOGRAM


31-1000643

02-22 GEA


[Monogram.com](https://monogram.com)

Printed in Serbia

Documents / Resources

 <p>INSTALLATION INSTRUCTIONS Double Drawer Built-In Refrigerator</p>	<p>MONOGRAM ZIDI240 Double-Drawer Built-In Refrigerator [pdf] Instruction Manual ZIDI240, Double-Drawer Built-In Refrigerator, ZIDI240 Double-Drawer Built-In Refrigerator, ZID S240</p>
--	--

References

-  [Homepage | Monogram](#)
-  [Monogram Appliances](#)