

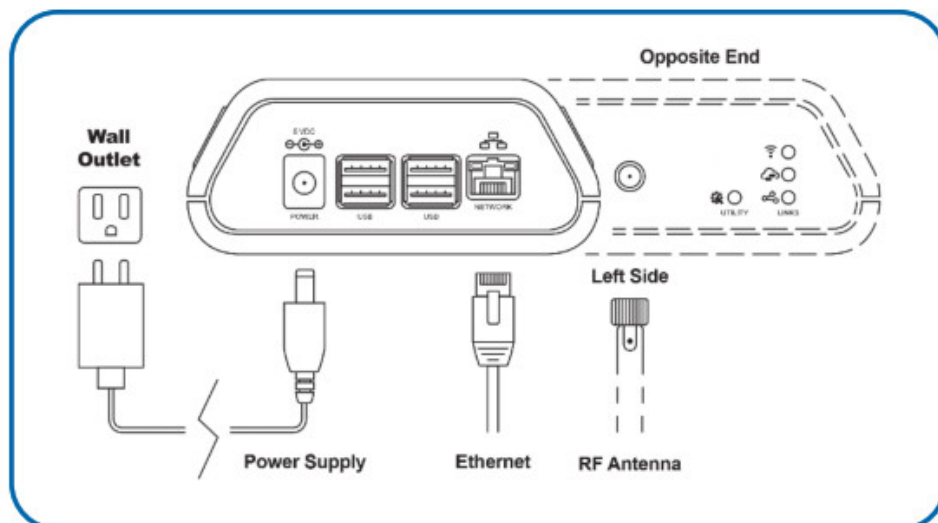


## MONNIT EDG-CCE-AQS-01 ALTA Advanced Edge Gateway User Guide

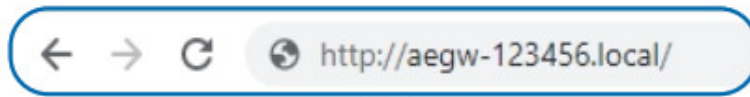
[Home](#) » [MONNIT](#) » MONNIT EDG-CCE-AQS-01 ALTA Advanced Edge Gateway User Guide 



### Remote Monitoring for Business Quick Start Guide – ALTA Advanced Edge Gateway



1. Power up the Advanced Edge Gateway by first plugging in the power supply and connecting the Ethernet Cable. It may take up to two minutes for the indicator LEDs to show activity.



ADVANCED EDGE GATEWAY



The IP address of this gateway is presently: 192.168.112.172

## Activities

[Go to Guided Setup](#) (First-time users should start here.)

[Go to Gateway Setup/Monitoring](#)

Go to the legacy [Express Core](#) interface (to add sensors and view locally-stored sensor data)

[Change the password](#)

[Sign off](#)



2. Enter: `http://aegw-{Device ID}.local/` into your browser address bar. The {Device ID} will be the six-digit number printed under the QR code of your device.

Click on “Go to the index” to return to this screen at any time.

Click on “Go to Guided Setup” if you are new to this gateway.

Enter a password. Follow the screens through these steps: Network configuration

General settings

Time zone

Cloud/MQTT producer setup

3. Click on “Go to the setup home” for the main menu.

Click on “Go to the setup home”, then click on “Monitor status and logs of the gateway”.



ADVANCED EDGE GATEWAY

## Status monitor

Gateway status as of 2021-03-25T22:53:02+00:00 (UTC)  
2021-03-25T16:53:02 (Local)

I want to [make changes to producers to the cloud](#)  
or to MQTT brokers

### This gateway:

Gateway ID: 955325  
Software version: 1.0.3

### Monnit radio transceiver:

Health: Good  
State: Running

### Express:

Health: Good  
State: Running

Producer: Local  
Status: Connected  
Health: Warning  
Warnings:

- The inbound topic is empty

Errors: None

Rolling log:

Producer successfully connected.  
Queued message {"Entity": "MQTTGateway", "Gateway\_ID": "Unassigned", "Time": "25 Mar 2021 16:52:45", "Gateway\_Flags": "0"} on topic: MQTTGateway/id/Unassigned  
Transmitted message: {"Entity": "MQTTGateway", "Gateway\_ID": "Unassigned", "Time": "25 Mar 2021 16:52:45", "Gateway\_Flags": "0"} on topic: MQTTGateway/id/Unassigned

Verify the gateway is  
connecting and  
transmitting messages.



4. Click on “Go to the index” to return to the main screen.

Click on “Go to the legacy Express Core interface” to set up sensors for this gateway.

CREATE ACCOUNT

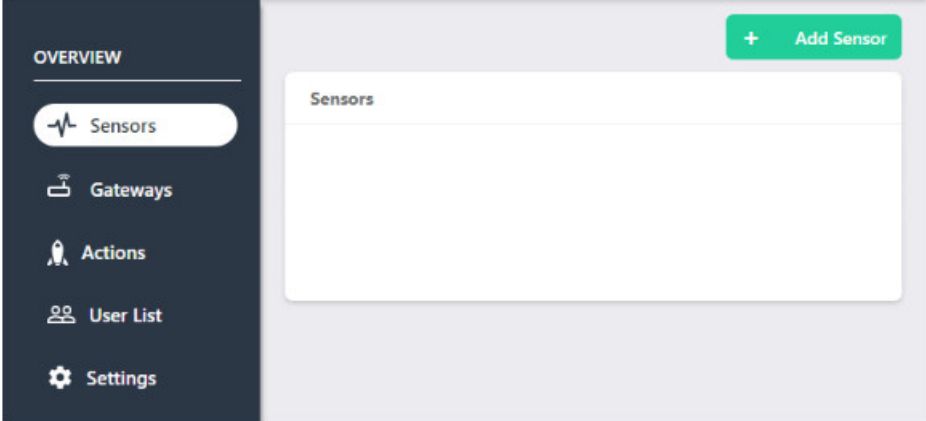

Email

Password

CREATE USER

Create an account, and log in.

Click on "Add Sensor".





Monnit Corporation  
3400 South West Temple  
Salt Lake City, UT 84115  
801-561-5555  
[www.monnit.com](http://www.monnit.com)

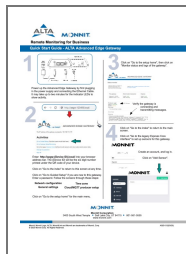
Monnit, Monnit Logo, ALTA, MonnitLink and iMonnit are trademarks of Monnit, Corp.  
© 2020 Monnit Corp. All Rights Reserved.

AQS-012(03/20)

#### Contents

- [1 Documents / Resources](#)
- [2 Related Posts](#)

**Documents / Resources**



## [MONNIT EDG-CCE-AQS-01 ALTA Advanced Edge Gateway](#) [pdf] User Guide

### EDG-CCE-AQS-01, ALTA Advanced Edge Gateway

[Manuals+.](#)