

MONKEY LOOP ML-DT1 Distortion Effect Pedal for Guitar



# MONKEY LOOP ML-DT1 Distortion Effect Pedal for Guitar User Manual

[Home](#) » [MONKEY LOOP](#) » MONKEY LOOP ML-DT1 Distortion Effect Pedal for Guitar User Manual 

## Contents

- [1 MONKEY LOOP ML-DT1 Distortion Effect Pedal for Guitar](#)
- [2 Product Information](#)
- [3 Product Usage Instructions](#)
- [4 SPECIFICATIONS](#)
- [5 OVERVEIW](#)
- [6 Documents / Resources](#)
  - [6.1 References](#)
- [7 Related Posts](#)

# MONKEY

**MONKEY LOOP ML-DT1 Distortion Effect Pedal for Guitar**



## Product Information

### Specifications:

- **Product Name:** Monkey Loop ML-DT1
- **AC/DC Adapter Jack:** Use only specified AC adapter, and connect it to an AC outlet of the correct voltage.
- **Level Knob:** Adjusts the level of the effect sounds.
- **Tone Knob:** Controls the tone. Rotating counterclockwise makes the sound milder, while clockwise makes it sharper.
- **Input Jack:** Accepts signals from a guitar or other effect pedals.
- **Gain Knob:** Adjusts the amount of distortion. Clockwise increases the effect, counterclockwise reduces it.
- **Output Jack:** Connect to your amp or another effect pedal's input.
- **Pedal Switch:** Turns the effect ON/OFF.
- **Indicator:** Shows whether the effect is ON or OFF.

## Product Usage Instructions

### 1. Power Connection:

Use the specified AC adapter to connect to the AC/DC Adapter Jack and plug it into a suitable power outlet.

### 2. Setting Controls:

- Adjust the Level Knob to set the desired volume of the effect sounds.
- Use the Tone Knob to control the tone. Rotate it to make the sound either milder or sharper.
- Turn the Gain Knob to adjust the amount of distortion, increasing it by rotating clockwise and reducing it by rotating counterclockwise.

### 3. Connecting to Equipment

- Plug your guitar or other effect pedals into the Input Jack.
- Connect the Output Jack to your amplifier or another effect pedal's input.

#### 4. Activating and Deactivating:

- Use the Pedal Switch to turn the effect ON or OFF.
- The Indicator will show whether the effect is currently active or not.

#### FAQ (Frequently Asked Questions)

• **Q: Can I use any AC adapter with Monkey Loop ML-DT1?**

A: No, only use the specified AC adapter to ensure proper functioning and avoid damage to the product.

• **Q: How do I know if the effect is activated?**

A: The Indicator will show whether the effect is ON (activated) or OFF (deactivated).

#### USER'S MANUAL

#### SPECIFICATIONS

- **Input Impedance:** 500 kohm
- **Output Impedance:** 150 ohm
- **Recommended Load Impedance:** 10 kohm
- **Equival Input Noise:** -90 dBu or less
- **Current Draw:** 5.5 mA (DC 9V)
- **Dimension:** 94mm×42mm×48mm
- **Weight:** 133g
- **Accessory:** Owner's Manual, Velcro tape 1 pair

#### OVERVIEW

##### AC/DC Adapter Jack

Use only specified AC adapter, and connect it to an AC outlet of the correct voltage.

##### Tone Knob

This controls the tone. Rotating the knob counterclockwise will make the sound milder, while rotating it clockwise will make the sound sharper.

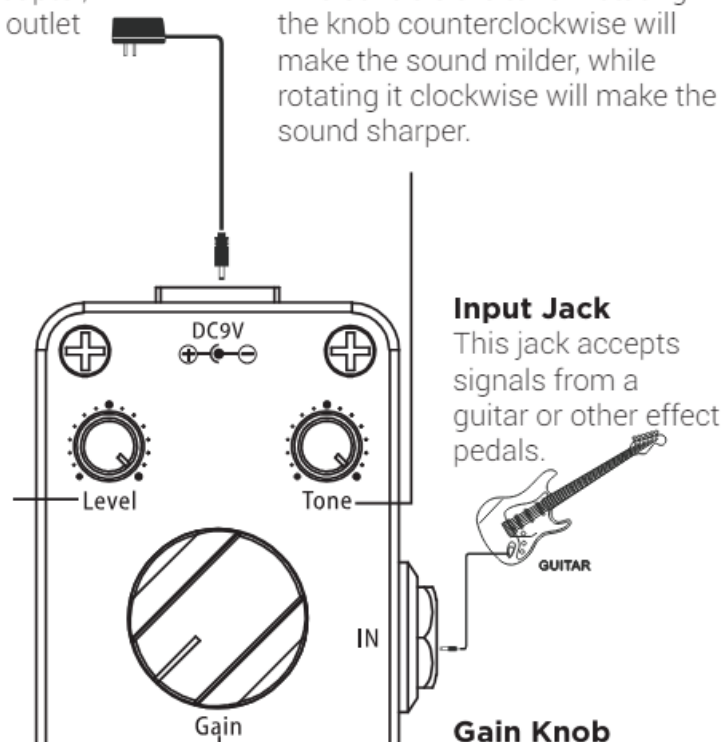
##### Level Knob

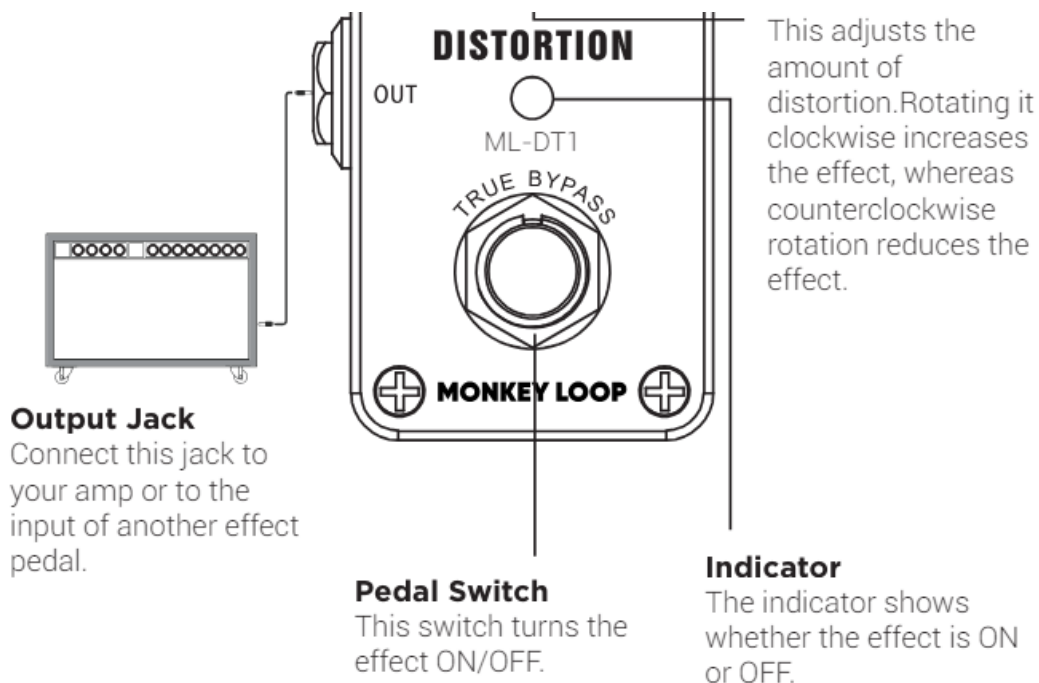
This knob adjusts the level of the effect sounds.

##### Input Jack


This jack accepts signals from a guitar or other effect pedals.

##### Gain Knob





## Documents / Resources

	<p><a href="#">MONKEY LOOP ML-DT1 Distortion Effect Pedal for Guitar [pdf] User Manual</a> ML-DT1 Distortion Effect Pedal for Guitar, ML-DT1, Distortion Effect Pedal for Guitar, Effect Pedal for Guitar, Pedal for Guitar, Guitar, Pedal</p>
---	--

## References

- [User Manual](#)

### [Manuals+.](#) [Privacy Policy](#)

This website is an independent publication and is neither affiliated with nor endorsed by any of the trademark owners. The "Bluetooth®" word mark and logos are registered trademarks owned by Bluetooth SIG, Inc. The "Wi-Fi®" word mark and logos are registered trademarks owned by the Wi-Fi Alliance. Any use of these marks on this website does not imply any affiliation with or endorsement.