



**MONITOR
AUDIO Creator
Series In Ceiling
Speaker**



MONITOR AUDIO Creator Series In Ceiling Speaker Installation Guide

[Home](#) » [MONITOR AUDIO](#) » MONITOR AUDIO Creator Series In Ceiling Speaker Installation Guide 

Contents

- [1 MONITOR AUDIO Creator Series In Ceiling Speaker](#)
- [2 Preparing your installation](#)
- [3 Installation – In-Ceiling speaker](#)
- [4 Installation – In-Wall speaker](#)
- [5 In-Wall mid-pod rotation](#)
- [6 Setting up a surround sound system](#)
- [7 Quik-Link terminals](#)
- [8 Painting the grilles](#)
- [9 Speaker controls](#)
- [10 Warranty](#)
- [11 Specifications](#)
- [12 Important Safety Instructions](#)
- [13 UKCA Declaration of Conformity](#)
- [14 FAQ](#)
- [15 Documents / Resources](#)
 - [15.1 References](#)



MONITOR AUDIO Creator Series In Ceiling Speaker



Register your Creator Series speakers

to ensure the best possible product and customer support

Register your speakers using the QR code or visit monitoraudio.com/registration



Welcome to Creator Series

Thank you for purchasing this Creator Series architectural speaker.

In this product manual, you'll find information about setting up your system and how to maintain your speakers for a lifetime of enjoyment.

If you need any further assistance, please contact our technical team at monitoraudio.com/support

Preparing your installation

Before you unpack your speakers, please make sure that there is plenty of available floor space.

Inside the carton, you will find a cut-out template that you can use the mark and cut into your ceilings or walls to the correct size, you'll also find your Quik-Link terminal and grille in the box.

CAUTION: The Creator Series loudspeakers can only be fixed into plasterboard (dry-lined) or suspended ceilings (in-ceiling models), with a thickness of up to 35mm (excluding the Super Slim series, which can be fixed up to 15mm) and walls (in-wall models), with a thickness of up to 30mm. Solid wall installation will require channeling out and a framework constructed to provide a structure for the Tri-Grip Dog Legs to clamp to. For safety reasons, if you are unsure of your ability to provide a secure and safe fixing, do not attempt to fix these speakers, please obtain the services of a competent and qualified tradesperson.

CAUTION: Ensure that there are no water pipes or electricity cables running within the wall or ceiling structure before cutting the speaker apertures. Work from secure steps and avoid trailing wires.

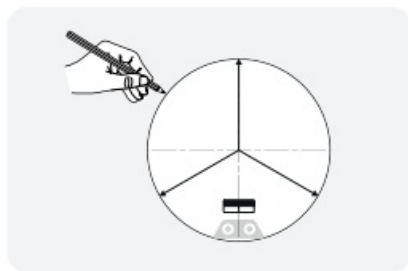
Overtightening warning

Do not over-tighten the Tri-Grip Dog Leg clamps. Over-tightening the clamping mechanism on any in-ceiling/in-wall speaker can result in damage to the speaker mounting hardware, ceiling/ wall or speaker frame, and/or deflection in the speaker frame during installation.

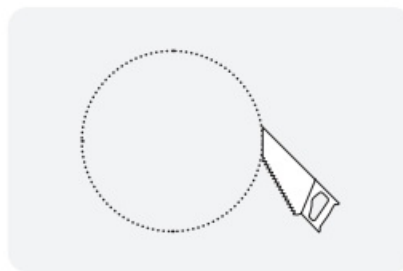
If you notice any of the above during installation, you have over-tightened the Tri-Grip Dog Leg. Back off the mounting screw until deflection is reduced to allow the product to sit firmly against the ceiling or wall.

IMPORTANT: Do not exceed 5Kgf/cm (4.34 lbf/inch.) or 0.5 NM when tightening the Tri-Grip Dog Leg screws. When using a cordless screwdriver/ drill to install this product ensure the clutch is set to it's lowest setting to avoid over-tightening and damaging the mounting hardware.

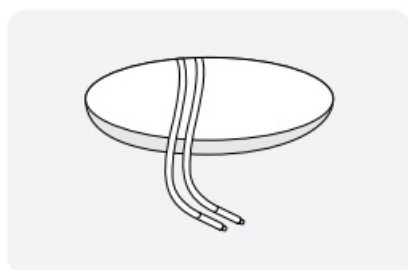
Installation – In-Ceiling speaker



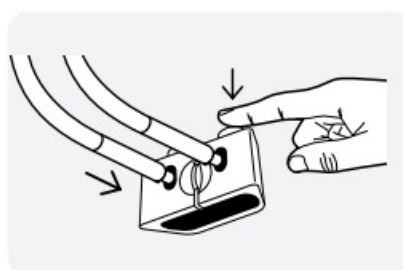
Draw around cut-out template



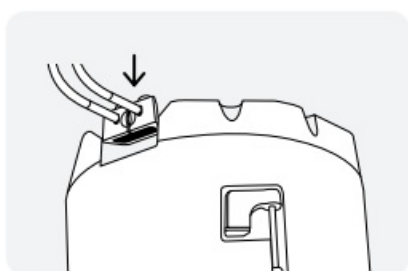
Cut around traced lines



Feed speaker wire to hole



Insert speaker wire into Quik-Link



Attach Quik-Link to terminal panel

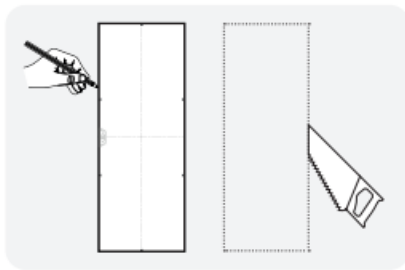


Push speaker into hole and tighten all 3 Tri-Grip Dog Legs

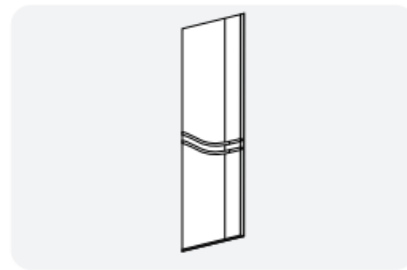


Attach magnetic grille

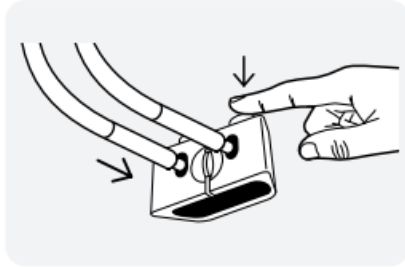
Installation – In-Wall speaker



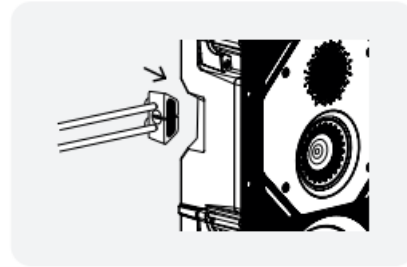
Draw and cut around cut-out template



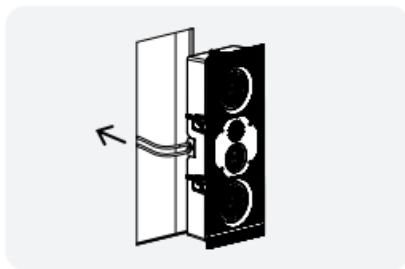
Run cabling to the cut-out hole



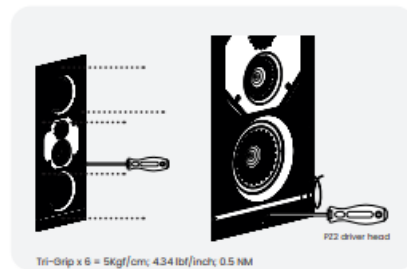
Connect cable to Quik-Link terminal



Connect Quik-Link terminal to speaker

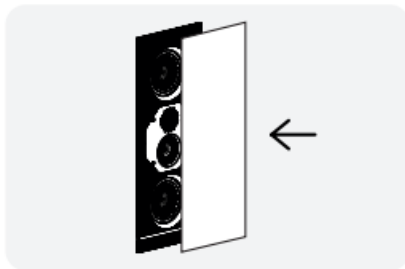


Guide speaker into cut-out hole



Tri-Grip x 6 = 5Kgf/cm; 4.34 lbf/inch; 0.5 NM

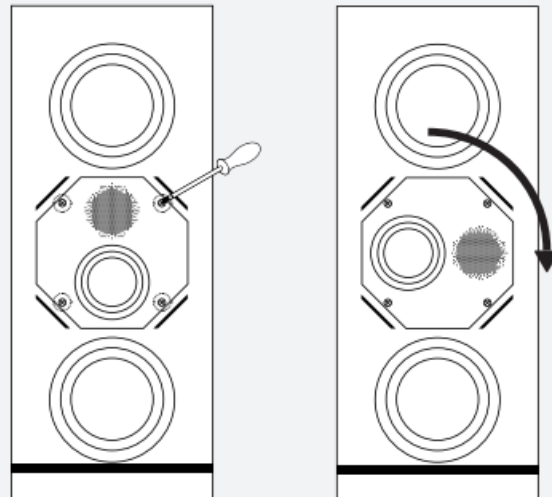
Tighten Tri-Grip II screws



Attach magnetic grille

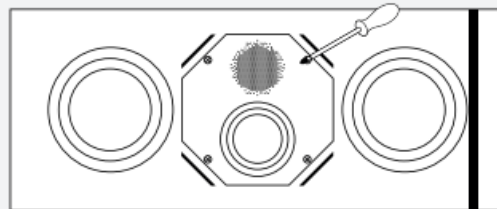
In-Wall mid-pod rotation

You can rotate the mid-pod section of Creator Series In-Wall models (excluding W1M-E and W1M) when using in a centre-channel configuration.



Unscrew holding screws

Turn Mid-Pod 90°

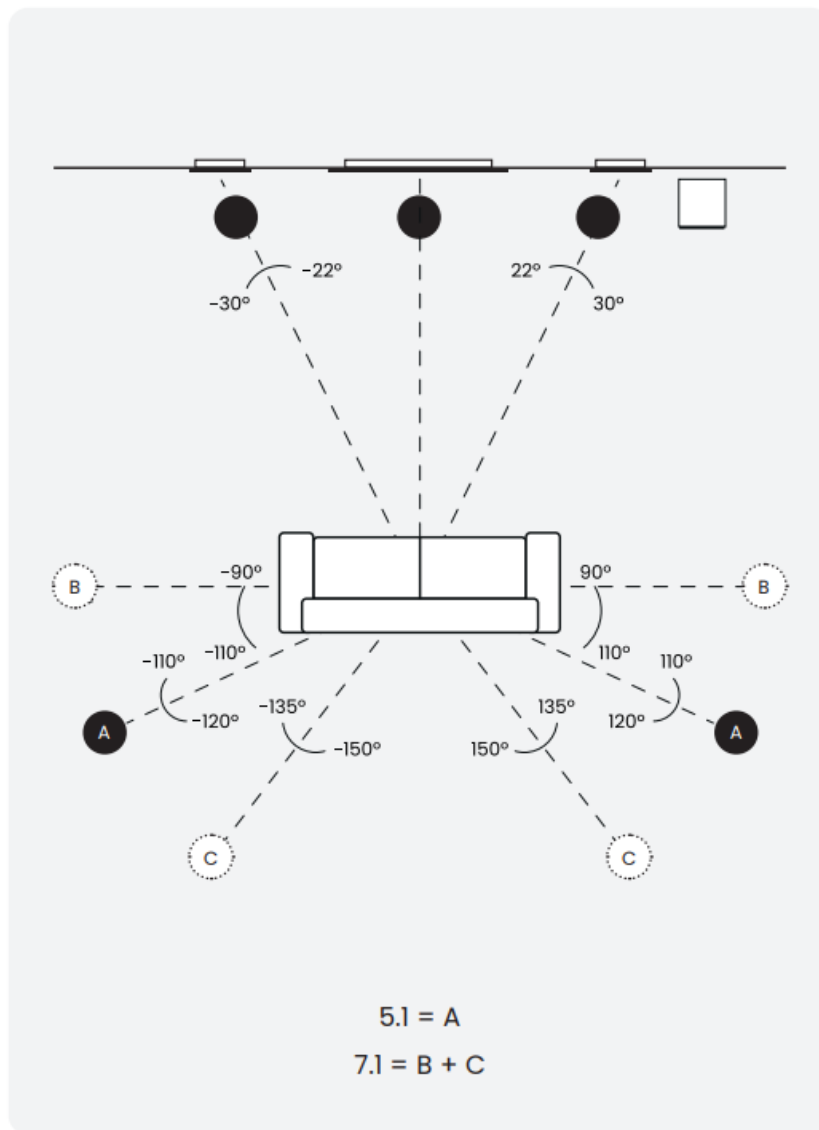


Tighten Screws

Setting up a surround sound system

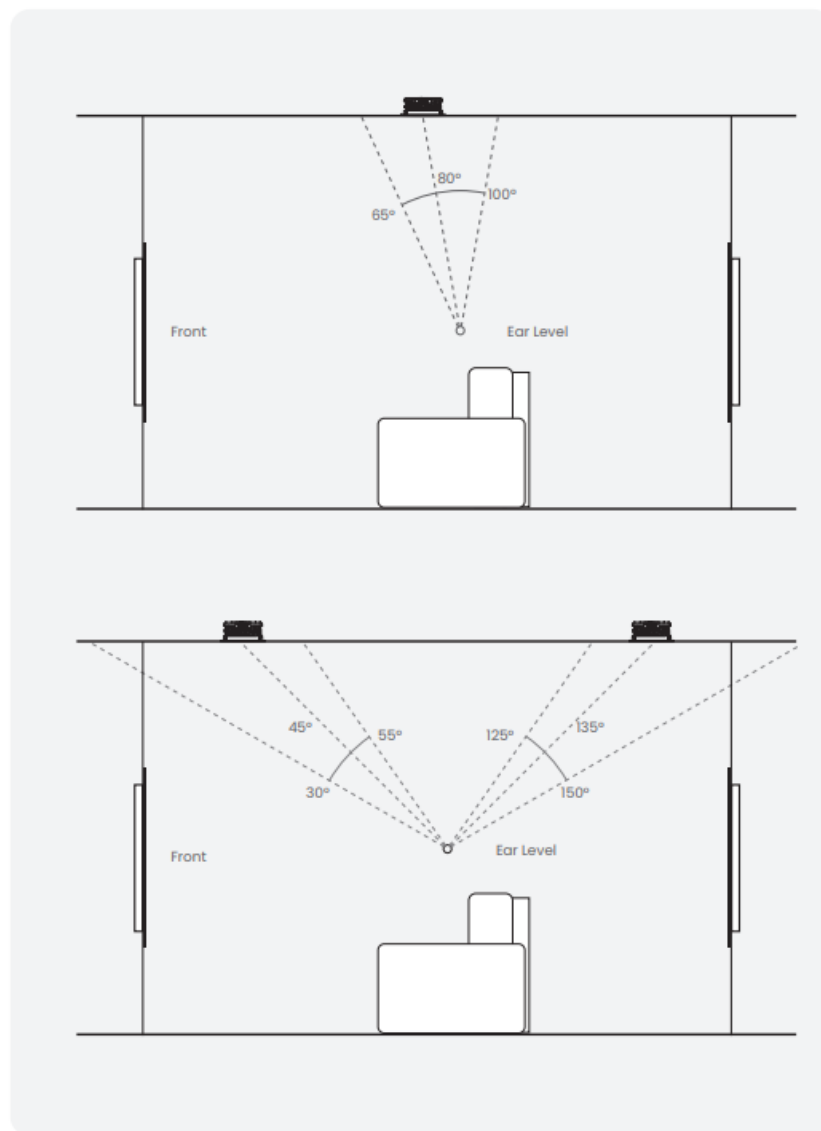
AV positioning

- Please refer to the illustration on the right for the ideal angles and positions of each speaker in your surround system.
- If setting up a 5.1 system you should place your surrounds in position (A).
- If setting up a 7.1 surround system you should place your side speakers in position (B)
- and rear speakers in position (C) to create a full 360° soundstage.



Dolby Atmos®

Please see the diagram on the right for ideal positioning of 2 or 4 Dolby Atmos® speaker setups. Typically these would be in line with the front left and right speakers.



Quik-Link terminals

- Quik-Link has been invented to make the installation of in ceiling and in wall speakers as safe and as quick as possible. You simply take the terminal off the speaker prior to installing (possibly even at first fix/ pre-installation stage) and connect the terminal to the speaker cables using the sprung terminals.
- Once the installation is complete the terminal, which is now connected with the speaker cables, magnetically snaps and locks into place on the rear of the speaker as you place the speaker into ceiling or wall.
- A second (purple) Quik-Link terminal is included with the T2X speakers for when used in a stereo installation.

Painting the grilles

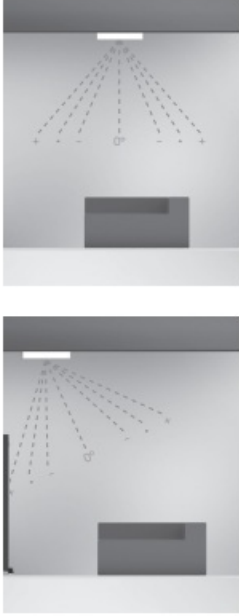
NOTE: Replacement grille scrims are not supplied. If you wish to paint your grilles, contact your place of purchase to obtain the replacement grille scrims. Do not paint the IW260X and 460X grilles as spare scrims are not available for after you have painted the grille.

1. Remove the grille scrim from the inside of the grille.
2. Paint all grilles required for the installation with the same batch of paint (if they are to be the same colour).
Spray paint is easier to apply or use a stippling action when brushing to avoid blocking the holes of the grille.
3. When dry, attach the replacement membrane scrim into the inside of the grille.
4. Fit the grille to the speaker.

Speaker controls

Switch	Options	Effect	Usage
Corner.	(On) / • (Off).	-6dB cut at low frequency.	Use when speaker is near to a wall/corner or when speaker installed in a smaller than recommended MDF back box.
Music/Movie. (T2X only).	Music/Movie.	Inverts the phase of the tweeter closest to the switch for use as a di-pole speaker.	Music for music (wide dispersion, 60/90/120deg coverage with HF switch) Movie for di-pole configuration Note: Movie should only be used in Mono.
Mono/Stereo. (T2X only).	Mono/Stereo.	Mono or Stereo configuration.	Stereo sound from a single speaker. Feed with both left and right speaker cables. Note: Mono for single feed movie/music use.

NOTE: As with all audio, the settings you chose to use are subject to your own personal tastes and the affect your room has on the acoustics. Experimentation is strongly advised to find the best setting for you.

Switch	Options	Effect	Usage
HF.	- / • / +. 	Cut/boost high frequency coverage and recommended listening window.	C2S, C2M, C2M-CP, C2L, C2L-CP HF - = 30x30° HF • = 60x60° HF + = 90x90° C2M-T2X, C2L-T2X HF - = 60x60° HF • = 90x90° HF + = 120x120° C3M, C3L, C3L-CP HF - = 45x45° HF • = 75x75° HF + = 105x105° C3L-A Note: MF/HF on-axis at -25°, hence asymmetric vertical dispersion/listening window HF - = 45x(-45/+0)° HF • = 75x(-60/+15)° HF + = 105x(-75/+30)° W2M, W2M-CP HF - = 45x30° HF • = 90x45° HF + = 120x60° W3M HF - = 45x30° HF • = 90x45° HF + = 120x60°
MF.	- / • / +.	Cut/boost mid frequency coverage and recommended listening window.	C3M, C3L, C3L-CP MF - = 45x45° MF • = 75x75° MF + = 105x105° C3L-A Note: MF/HF on-axis at -25°, hence asymmetric vertical dispersion/listening window MF - = 45x(-45/+0)° MF • = 75x(-60/+15)° MF + = 105x(-75/+30)° W3M MF/HF - = 45x30° MF/HF • = 90x45° MF/HF + = 120x60°

Warranty

In the unlikely event that there is a defect with this product, it is covered by the Monitor Audio manufacturer's warranty, provided that the product was supplied by an authorised Monitor Audio retailer.
For the period of cover please refer to the product page on our website at monitoraudio.com

Register your Creator Series speakers

to ensure the best possible product and customer support

Register your speakers using the QR code or visit monitoraudio.com/registration



Specifications

Model Name	C1S	C1M	C1L	C2S	C2M	C2M-T2X	C2M-CP
Sensitivity (2.83Vrms@1m, Installed)	84dB	86dB	88dB	84dB	86dB	86dB	87dB

Cutout Size	Ø 171 mm (6 3/4")	Ø 212 mm (8 3/8")	Ø 248 mm (9 3/4")	Ø 171 mm (6 3/4")	Ø 212 mm (8 3/8")	Ø 212 mm (8 3/8")	Ø 212 mm (8 3/8")
Mounting Depth	99 mm (3 7/8")	99 mm (3 7/8")	99 mm (3 7/8")	99 mm (3 7/8")	99 mm (3 7/8")	99 mm (3 7/8")	177.5 mm (6 63/64")
Dog Leg Clearance	Ø224 mm (8 13/16")	Ø265 mm (10 7/16")	Ø301 mm (11 7/8")	Ø224 mm (8 13/16")	Ø265 mm (10 7/16")	Ø265 mm (10 7/16")	Ø265 mm (10 7/16")
External Dimensions Inc Grilles (Ø x D)	Ø 201 x 103 mm (Ø 7 15/16 x 4 4/16")	Ø 242 x 103 mm (Ø 9 1/2 x 4 4/16")	Ø 278 x 103 mm (Ø 10 15/16 x 4 4/16")	Ø 201 x 103 mm (Ø 7 15/16 x 4 4/16")	Ø 242 x 103 mm (Ø 9 1/2 x 4 4/16")	Ø 242 x 103 mm (Ø 9 1/2 x 4 4/16")	Ø 242 x 181.5 mm (Ø 9 1/2 x 7 1/8")
Recommended Amplifier Power (RMS into 8 Ohms, Music Signal)	25-100 W	35-130 W	40-150 W	35-130 W	40-150 W	40-150 W (Mono) 2 x 20-75 W (Stereo)	35-130 W
Continuous Power Handling (RMS into Nominal Impedance, Pink Noise with 6dB Crest Factor)	50 W	65 W	75 W	65 W	75 W	150 W (Mono) 2 x 75 W (Stereo)	65 W
Nominal Impedance	8 Ohms	8 Ohms	8 Ohms	8 Ohms	8 Ohms	4 Ohms (Mono) 8 Ohms (Stereo)	8 Ohms
Minimum Impedance (20Hz to 20kHz)	6.6 Ohms @ 150 Hz	6.5 Ohms @ 150 Hz	6.4 Ohms @ 150 Hz	6.8 Ohms @ 150 Hz	6.6 Ohms @ 150 Hz	3.4 Ohms @ 15 kHz (Mono) 6.8 Ohms @ 15 kHz (Stereo)	6.4 Ohms @ 15 kHz
Drive Unit Complement	5" (127 mm) C-CAM mid-bass driver 1" (25 mm) C-CAM tweeter	7" (178 mm) C-CAM mid-bass driver 1" (25 mm) C-CAM tweeter	9" (229 mm) C-CAM mid-bass driver 1 1/4" (32 mm) C-CAM tweeter	5" (127 mm) RST II mid-bass driver 1" (25 mm) C-CAM tweeter	7" (178 mm) RST II mid-bass driver 1" (25 mm) C-CAM tweeter	7" (178 mm) RST II dual-coil mid-bass driver 2 x 1" (25 mm) C-CAM tweeter	7" (178 mm) RST II mid-bass driver 1" (25 mm) C-CAM tweeter

Frequency Response, Installed (-6dB)	40 Hz – 30 kHz	35 Hz – 30 kHz	30 Hz – 25 kHz	40 Hz – 30 kHz	35 Hz – 35 kHz	35 Hz – 30 kHz	70 Hz – 35 kHz
Maximum Peak SPL* (single speaker @ 1m Z-Weighted)	110dB	113dB	116dB	111dB	114dB	(Mono) 114 dB	116dB
Channels	1	1	1	1	1	1 (Mono) 2 (Stereo)	1
System Format	2-Way	2-Way	2-Way	2-Way	2-Way	2-Way	2-Way
Bass Alignment	N/A	N/A	N/A	N/A	N/A	N/A	Sealed
Crossover Frequency	LF/HF: 3 kHz	LF/HF: 2 kHz	LF/HF: 2 kHz	LF/HF: 2.5 kHz	LF/HF: 2.25 kHz	LF/HF: 2.25 kHz	LF/HF: 2.5 kHz
Boundary Switch	N/A	N/A	N/A	On/Off	On/Off	On/Off	On/Off
MF Switch	N/A	N/A	N/A	N/A	N/A	N/A	N/A
HF Switch	N/A	N/A	N/A	-/0/+	-/0/+	-/0/+	-/0/+
Music/Movie Switch	N/A	N/A	N/A	N/A	N/A	Music/Movie	N/A
Mono/Stereo Switch	N/A	N/A	N/A	N/A	N/A	Mono/Stereo	N/A
Construction Material	Mineral-filled ABS plastic, RoHS2 Compliant	Mineral-filled ABS plastic, RoHS2 Compliant	Mineral-filled ABS plastic, RoHS2 Compliant	Mineral-filled ABS plastic, RoHS2 Compliant	Mineral-filled ABS plastic, RoHS2 Compliant	Mineral-filled ABS plastic, RoHS2 Compliant	Mineral-filled ABS plastic, RoHS2 Compliant
Weight	1.4 kg (3 lb 1 oz)	1.9 kg (4 lb 3 oz)	2.5 kg (5 lb 8 oz)	1.5 kg (3 lb 5 oz)	2 kg (4 lb 6 oz)	2.1 kg (4 lb 10 oz)	2.6 kg (5 lb 11 oz)
Pre-Construction bracket	CS-B	CM-B	CL-B	CS-B	CM-B	CM-B	CM-B
Back Box	CSM-BOX	CSM-BOX	CML-BOX	CSM-BOX	CML-BOX	CSM-BOX	N/A

Model Name	C2L	C2L-T2X	C2L-CP	C3M	C3L	C3L-CP	C3L-A
Sensitivity (2.83Vrms@1m, Installed)	88dB	88dB	89dB	87dB	89dB	89dB	89dB
Cutout Size	Ø301 mm (11 7/8")	Ø301 mm (11 7/8")	Ø301 mm (11 7/8")	Ø 212 mm (8 3/8")	Ø301 mm (11 7/8")	Ø301 mm (11 7/8")	Ø301 mm (11 7/8")

Mounting Depth	99 mm (3 7/8")	99 mm (3 7/8")	177.5 mm (6 63/64")	148 mm (5 13/16")	157 mm (6 3/16")	177.5 mm (6 63/64")	157 mm (6 3/16")
Dog Leg Clearance	Ø301 mm (11 7/8")	Ø301 mm (11 7/8")	Ø301 mm (11 7/8")	Ø265 mm (10 7/16")	Ø301 mm (11 7/8")	Ø301 mm (11 7/8")	Ø301 mm (11 7/8")
External Dimensions Inc Grilles (Ø x D)	Ø 278 x 103 mm (Ø 10 15/16 x 4 4/16")	Ø 278 x 103 mm (Ø 10 15/16 x 4 4/16")	Ø 278 x 181 mm (Ø 10 15/16 x 7 1/8")	Ø 242 x 151 mm (Ø 9 1/2 x 5 15/16")	Ø 278 x 161 mm (Ø 10 15/16 x 6 5/16")	Ø 278 x 181 mm (Ø 10 15/16 x 7 1/8")	Ø 278 x 161 mm (Ø 10 15/16 x 6 5/16")
Recommended Amplifier Power (RMS into 8 OHM, Music Signal)	60–240 W	60–240 W (Mono) 2 x 60–240 W (Stereo)	50–200 W	45-180 W	60-225 W	45-180 W	60-225 W
Continuous Power Handling (RMS into Nominal Impedance, Pink Noise with 6dB Crest Factor)	120 W	240 W (Mono) 2 x 30-120 W (Stereo)	100 W	120 W	150 W	120 W	150 W
Nominal Impedance	8 Ohms	4 Ohms (Mono) 8 Ohms (Stereo)	8 Ohms	6 Ohms	6 Ohms	6 Ohms	6 Ohms
Minimum Impedance (20Hz to 20kHz)	6.4 Ohms @ 15 kHz	3.2 Ohms @ 15 kHz (Mono) 6.4 Ohms @ 15 kHz (Stereo)	6.6 Ohms @ 10 kHz	4.8 Ohms @ 2 kHz	4.8 Ohms @ 2 kHz	4.9 Ohms @ 2 kHz	4.6 Ohms @ 2 kHz
Drive Unit Complement	9" (229 mm) RST II mid-bass driver 1 1/4" (32 mm) C-CAM tweeter	9" (229 mm) RST II dual-coil mid-bass driver 2 x 1 1/4" (32 mm) C-CAM tweeter	9" (229 mm) RST II mid-bass driver 1 1/4" (32 mm) C-CAM tweeter	7" (178 mm) RDT III bass driver 4" (102 mm) IDC II midrange driver 1" (25 mm) IDC II tweeter	9" (229 mm) RDT III bass driver 4" (102 mm) IDC II midrange driver 1" (25 mm) IDC II tweeter	9" (229 mm) RDT III bass driver 4" (102 mm) IDC II midrange driver 1" (25 mm) IDC II tweeter	9" (229 mm) RDT III bass driver 4" (102 mm) IDC II midrange driver 1" (25 mm) IDC II tweeter

Frequency Response, Installed (-6dB)	30 Hz – 25 kHz	30 Hz – 30 kHz	75 Hz – 25 kHz	45 Hz – 35 kHz	45 Hz – 35 kHz	80 Hz – 35 kHz	45 Hz – 35 kHz
Maximum Peak SPL* (single speaker @ 1 m Z-Weighted)	117dB	(Mono) 117 dB	120dB	116dB	119dB	122dB	119dB
Channels	1	1 (Mono) 2 (Stereo)	1	1	1	1	1
System Format	2-Way	2-Way	2-Way	3-Way	3-Way	3-Way	3-Way
Bass Alignment	N/A	N/A	Sealed	N/A	N/A	Sealed	N/A
Boundary Switch	On/Off	On/Off	On/Off	On/Off	On/Off	On/Off	On/Off
MF Switch	N/A	N/A	N/A	-0/+	-0/+	-0/+	-0/+
HF Switch	-0/+	-0/+	-0/+	-0/+	-0/+	-0/+	-0/+
Music/Movie Switch	N/A	Music/Movie	N/A	N/A	N/A	N/A	N/A
Mono/Stereo Switch Construction Material	N/A Mineral-filled ABS plastic, RoHS2 Compliant	Mono/Stereo Mineral-filled ABS plastic, RoHS2 Compliant	N/A Mineral-filled ABS plastic, RoHS2 Compliant	N/A Mineral-filled ABS plastic, RoHS2 Compliant	N/A Mineral-filled ABS plastic, RoHS2 Compliant	N/A Mineral-filled ABS plastic, RoHS2 Compliant	N/A Mineral-filled ABS plastic, RoHS2 Compliant
Weight	2.5 kg (5 lb 8 oz)	2.7 kg (6 lb)	3.3 kg (7 lb 5 oz)	3.4 kg (7 lb 8 oz)	5 kg (11 lb)	5.7 kg (12 lb 10 oz)	5.1 kg (11 lb 3 oz)
Pre-Construction bracket	CL-B	CL-B	CL-B	CM-B	CL-B	CL-B	CL-B
Back Box	CML-BOX	CML-BOX	N/A	CSM-BOX	CML-BOX	N/A	CML-BOX

Model Name	W1M-E	W1M	W2M	W2M-CP	W3M
Sensitivity (2.83Vrms@1m, Installed)	84dB	87dB	87dB	87dB	88dB
Cutout Size	527 x 198 mm (20 3/4 x 7 13/16")	527 x 198 mm (20 3/4 x 7 13/16")	527 x 198 mm (20 3/4 x 7 13/16")	527 x 199 mm (20 3/4 x 7 13/16")	527 x 198 mm (20 3/4 x 7 13/16")

Mounting Depth	85 mm (3 3/8")	85 mm (3 3/8")	85 mm (3 3/8")	97 mm (3 13/16")	85 mm (3 3/8")
Dog Leg Clearance	581 x 252 mm (22 7/8 x 9 15/16")	581 x 252 mm (22 7/8 x 9 15/16")	581 x 252 mm (22 7/8 x 9 15/16")	581 x 252 mm (22 7/8 x 9 15/16")	581 x 252 mm (22 7/8 x 9 15/16")
External Dimensions Inc Grilles (H x W x D)	560 x 231 x 90 mm (22 1/16 x 9 1/8 x 3 9/16")	560 x 231 x 90 mm (22 1/16 x 9 1/8 x 3 9/16")	560 x 231 x 90 mm (22 1/16 x 9 1/8 x 3 9/16")	560 x 231 x 102 mm (22 1/16 x 9 1/8 x 4 1/64")	560 x 231 x 90 mm (22 1/16 x 9 1/8 x 3 9/16")
Recommended Amplifier Power (RMS into 8 OHM, Music Signal)	25-100 W	30-110 W	45-180 W	40-150 W	60-225 W
Continuous Power Handling (RMS into Nominal Impedance, Pink Noise with 6dB Crest Factor)	50 W	75 W	120 W	100 W	150 W
Nominal Impedance	8 Ohms	6 Ohms	6 Ohms	6 Ohms	6 Ohms
Minimum Impedance (20Hz to 20kHz)	6.5 Ohms @ 200 Hz (6.2 Ohms @ 20 kHz)	4.8 Ohms @ 15 kHz	4.8 Ohms @ 1 kHz (4.1 Ohms @ 15 kHz)	4.8 Ohms @ 1 kHz (4.3 Ohms @ 15 kHz)	4.8 Ohms @ 150 Hz
Drive Unit Complement	5" (127 mm) C-CAM mid-bass driver 1" (25 mm) C-CAM tweeter	2 x 5" (127 mm) C-CAM mid-bass driver 1" (25 mm) C-CAM tweeter	2 x 5" (127 mm) RST II bass driver 3" (76 mm) RST II midrange driver 1" (25 mm) C-CAM tweeter	2 x 5" (127 mm) RST II bass driver 3" (76 mm) RST II midrange driver 1" (25 mm) C-CAM tweeter	2 x 5" (127 mm) RDT III bass driver 3" (76 mm) C-CAM midrange driver MPD tweeter
Frequency Response, Installed (-6dB)	40 Hz – 30 kHz	40 Hz – 30 kHz	40 Hz – 35 kHz	60 Hz – 35 kHz	45 Hz – 60 kHz
Maximum Peak SPL* (single speaker @ 1 m Z-Weighted)	110dB	113dB	116dB	118dB	122dB
Channels	1	1	1	1	1
System Format	2-Way	2-Way	3-Way	3-Way	3-Way

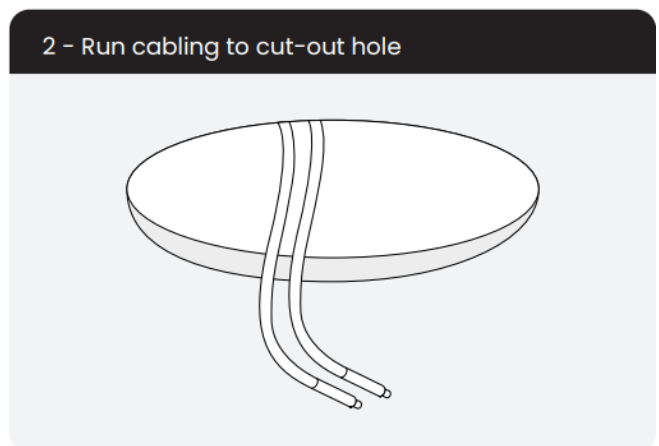
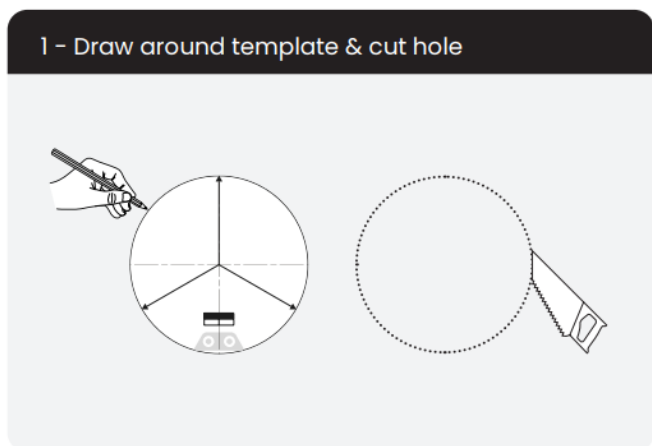
Bass Alignment	N/A	N/A	N/A	Sealed	N/A
Crossover Frequency	LF/HF: 2.5 kHz	LF/HF: 2.75 kHz	LF/HF: 650 kHz MF/HF: 3 kHz	LF/HF: 550 kHz MF/HF: 3 kHz	LF/HF: 650 kHz MF/HF: 3.5 kHz
Boundary Switch	N/A	N/A	On/Off	On/Off	On/Off
MF Switch	N/A	N/A	N/A	N/A	-/0/+
HF Switch	N/A	N/A	-/0/+	-/0/+	-/0/+
Construction Material	Mineral-filled ABS plastic, RoHS2 Compliant	Mineral-filled ABS plastic, RoHS2 Compliant	Mineral-filled ABS plastic, RoHS2 Compliant	Mineral-filled ABS plastic, RoHS2 Compliant	Mineral-filled ABS plastic, RoHS2 Compliant
Weight	2.6 kg (5 lb 11 oz)	3.4 kg (7 lb 8 oz)	3.9 kg (8 lb 9 oz)	4.4 kg (9 lb 11 oz)	4.7 kg (10 lb 6 oz)
Pre-Construction bracket	WM-B	WM-B	WM-B	WM-B	WM-B
Back Box	WM-BOX	WM-BOX	WM-BOX	N/A	WM-BOX



EN	Nominal Impedance	Power Handling (RMS into Nominal Impedance, Pink Noise with 6dB Crest Factor)	Cut Out Diameter	Mounting Depth	External Dimensions (inc. grille where fitted) (Ø x D)	Weight
----	-------------------	--	------------------	----------------	---	--------

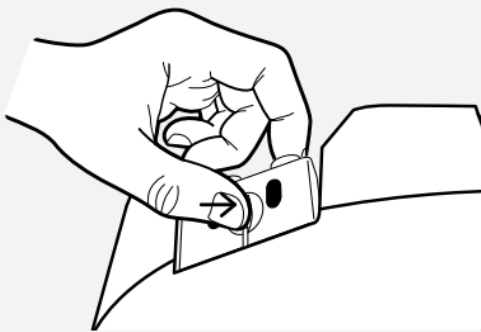
C1S	8 Ohms	50 W	Ø 171 mm	99 mm	Ø 201 x 103 mm Ø 7 ¹⁵ / ₁₆ x 4 ⁴ / ₁₆ "	1.4 kg 3 lb 1 oz
C1M	8 Ohms	65 W	Ø 212 mm	99 mm	Ø 242 x 103 mm Ø 9 ¹ / ₂ x 4 ⁴ / ₁₆ "	1.9 kg 4 lb 3 oz
C1L	8 Ohms	75 W	Ø 248 mm	99 mm	Ø 278 x 103 mm Ø 10 ¹⁵ / ₁₆ x 4 ⁴ / ₁₆ "	2.5 kg 5 lb 8 oz
C2S	8 Ohms	65 W	Ø 171 mm	99 mm	Ø 201 x 103 mm Ø 7 ¹⁵ / ₁₆ x 4 ⁴ / ₁₆ "	1.5 kg 3 lb 5 oz
C2M	8 Ohms	75 W	Ø 212 mm	99 mm	Ø 242 x 103 mm Ø 9 ¹ / ₂ x 4 ⁴ / ₁₆ "	2 kg 4 lb 6 oz
C2M-T2X	4 Ohm (Mono) 8 Ohm (Stereo)	150 W (Mono) 2 x 75 W (Stereo)	Ø 212 mm	99 mm	Ø 242 x 103 mm Ø 9 ¹ / ₂ x 4 ⁴ / ₁₆ "	2.1 kg 4 lb 10 oz
C2M-CP	8 Ohms	65 W	Ø 212 mm	177.5 mm	Ø 242 x 181.5 mm Ø 9 ¹ / ₂ x 7 ¹ / ₈ "	2.6 kg 5 lb 11 oz
C2L	8 Ohms	120 W	Ø 248 mm	99 mm	Ø 278 x 103 mm Ø 10 ¹⁵ / ₁₆ x 4 ⁴ / ₁₆ "	2.5 kg 5 lb 8 oz
C2L-T2X	4 Ohm (Mono) 8 Ohm (Stereo)	240 W (Mono) 2 x 120 W (Stereo)	Ø 248 mm	99 mm	Ø 278 x 103 mm Ø 10 ¹⁵ / ₁₆ x 4 ⁴ / ₁₆ "	2.7 kg 6 lb
C2L-CP	8 Ohms	100 W	Ø 248 mm	177.5 mm	Ø 278 x 181 mm Ø 10 ¹⁵ / ₁₆ x 7 ¹ / ₈ "	3.3 kg 7 lb 5 oz
C3M	6 Ohms	120 W	Ø 212 mm	147.5 mm	Ø 242 x 151 mm Ø 9 ¹ / ₂ x 5 ¹⁵ / ₁₆ "	3.4 kg 7 lb 8 oz
C3L	6 Ohms	150 W	Ø 248 mm	157 mm	Ø 278 x 161 mm Ø 10 ¹⁵ / ₁₆ x 6 ⁵ / ₁₆ "	5 kg 11 lb
C3L-CP	6 Ohms	120 W	Ø 248 mm	177.5 mm	Ø 278 x 181 mm Ø 10 ¹⁵ / ₁₆ x 7 ¹ / ₈ "	5.7 kg 12 lb 10 oz
C3L-A	6 Ohms	150 W	Ø 248 mm	157 mm	Ø 278 x 161 mm Ø 10 ¹⁵ / ₁₆ x 6 ⁵ / ₁₆ "	5.1 kg 11 lb 3 oz

1. Draw around the template & cut hole
2. Run cabling to cut-out hole

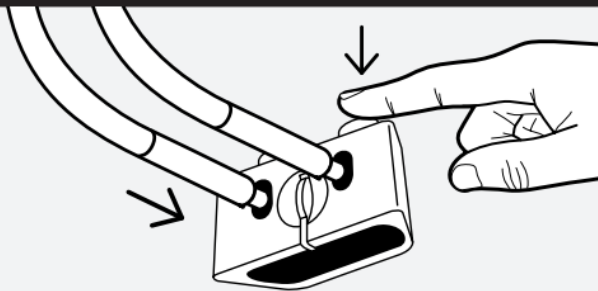


3. Pinch clips & remove the Quik-Link terminal
4. Connect cable to Quik-Link terminal

3 - Pinch clips & remove Quik-Link terminal



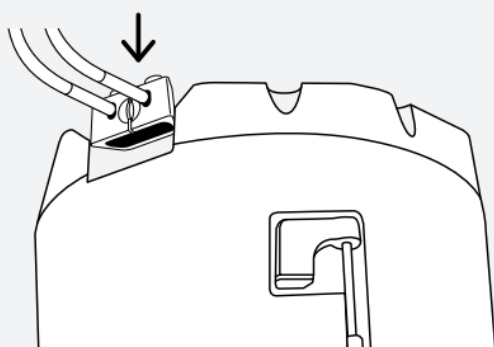
4 - Connect cable to Quik-Link terminal



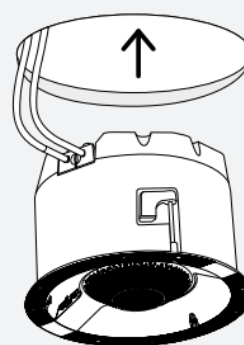
5. Connect Quik-Link terminal to speaker

6. Guide speaker into the cut-out hole

5 - Connect Quik-Link terminal to speaker



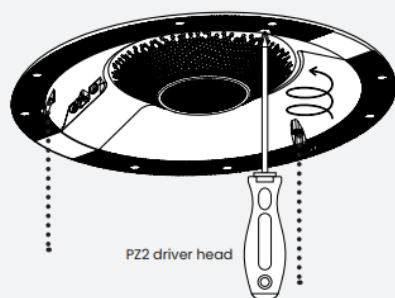
6 - Guide speaker into cut-out hole



7. Tighten Tri-Grip II screws

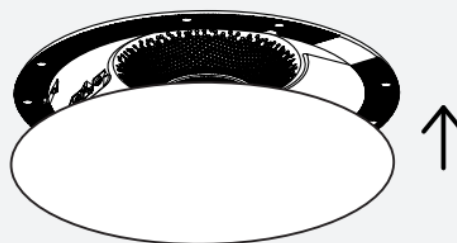
8. Attach grille

7 - Tighten Tri-Grip II screws



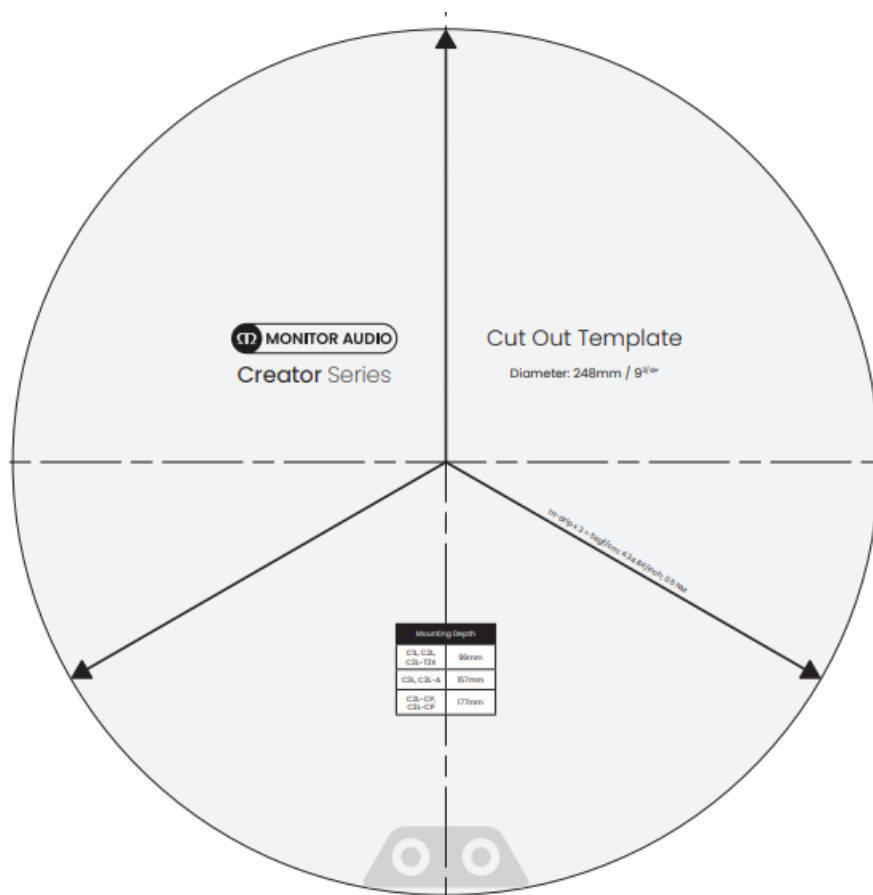
Tri-Grip x 3 = 5Kgf/cm; 4.34 lbf/inch; 0.5 NM

8 - Attach grille



PRINT SIZE: A3

IMPORTANT: Please ensure that this cut-out template is printed to 100% of its original size. Failure to do so will mean the cut-out hole may be incorrectly sized. All cut-out templates are printed at your own risk.



Important Safety Instructions

1. Please read these instructions.
2. Please keep these instructions.
3. Heed all warnings.
4. Follow all instructions
5. Do not use this apparatus with water.
6. Clean only with a dry cloth. Great care and attention have gone into the materials chosen to produce your Monitor Audio loudspeakers. A gentle wipe with a dry, clean cloth is all that is required to remove any dust. Treat them as you would a fine piece of furniture because that is how they have been designed.
7. Do not install near any heat source, such as radiators, heat registers, stoves, or other apparatus (including amplifiers) that produce heat.
8. Only use attachments/ accessories specified by Monitor Audio.
9. Use only with the cart, stand, tripod, bracket, or table specified by monitor Audio or sold with the apparatus. When a cart is used, use caution when moving the cart/ apparatus combination to avoid injury from tip-over.
10. Refer all servicing to qualified service personnel. Servicing is required when the apparatus has been damaged in any way, such as power supply cord or plug is damaged, liquid has been spilled or objects have fallen onto the apparatus, the apparatus has been exposed to rain or moisture, does not operate normally or has been dropped.
11. This apparatus shall not be exposed to dripping or splashing water and no object filled with liquids such as vases shall be placed on the apparatus.
12. This exclamation point within an equilateral triangle is intended to alert the user to the presence of important maintenance (servicing) instructions in the literature accompanying the appliance.
13. No naked flame sources, such as lighted candles, should be placed on the apparatus.

14. Monitor Audio would discourage using its products in high humidity, extremely hot or cold or outdoor environments unless the product specifically advises suitability for such environments, for clarification of suitable products within the Monitor Audio range please contact a Monitor Audio representative

Re-cycling



- Correct Disposal of Waste Electrical and Electronic Equipment (WEEE) by User in Private Households in the EU.
- This symbol on the product or accessories indicates that they must not be disposed of with your household wastes throughout the EU.
- To prevent possible harm to the environment or human health from uncontrolled waste disposal, recycle it responsibly to promote the sustainable reuse of material resources. Instead it is your responsibility to dispose of your waste equipment by handing it over to a designated WEEE collection point for recycling. The separate collection and recycling of your waste equipment will help conserve natural resources and ensure that it is recycled in a manner that protects human health and the environment.
- For more specific information about where you can take your equipment for recycling please contact your local city/council office, your local waste disposal service or the outlet where you purchased your Monitor Audio product.

RoHS Declaration of Conformity



Directive 2011/65/EU of the European Parliament and of the Council on the reduction of the use of certain hazardous substances in electrical and electronic equipment, June 2011.

Background

The RoHS directive restricts the use of Lead (Pb), Cadmium (Cd), Mercury (Hg), hexavalent Chromium (CrVI), polybrominated biphenyl (PBB) compounds, and polybrominated diphenyl ether (PBDE) compounds in electrical and electronic equipment sold in the European Union.

Warranty and Service

Both the craftsmanship and the performance of this product is covered by the manufacturer's warranty against manufacturing defects provided that the product was supplied by an authorised Monitor Audio retailer under the consumer sale agreement. For the period of cover please refer to the product page on our website: monitoraudio.com for the product you have purchased.

When purchasing Monitor Audio products, please keep your receipt of purchase safe and register your product online at monitoraudio.com/registration



The words 'consumer sale' shall be construed in accordance with section 15 of the supply of Goods Act 1973. Monitor Audio accepts no responsibility for defects arising from accident, misuse, abuse, wear and tear, modification or operation outside of that specified within this instruction manual. Neither will responsibility be accepted for damage or loss occurring during transit to or from the parties claiming under this guarantee. This warranty covers both labour and parts. The liability of Monitor Audio is limited to the cost of repair or replacement of the defective parts (at the discretion of Monitor Audio) and under no circumstances extends to consequential losses or damage.

Claims under this Warranty

The equipment should be returned in its original packaging to the original supplier where possible, or to any other authorized Monitor Audio~ dealer. If it is not possible to return the equipment by hand, then It should be sent carriage prepaid via a reputable carrier. If the original packing is not available replacement packaging can be purchased from Monitor Audio.

If you have any difficulties complying with these requirements please contact us at the following address:

Customer Service

Monitor Audio Ltd. 24 Brook Road Rayleigh Essex, SS6 7XJ England

- Tel: +44 (0)1268 740580
- Fax: +44 (0)1268 740589
- Internet: www.monitoraudio.com
- Email: info@monitoraudio.com

This guarantee does not affect the statutory rights of the consumer under UK law.

Data Protection

- We at Monitor Audio are committed to respecting the wishes and privacy of our customers. Any information you provide will be held in the strictest confidence and only used within the Monitor Audio organization for the provision of services such as warranty claims or spare parts.
- we may wish to contact you in the future to ensure you are happy with the products and standards of service we provide and to keep you up-to-date with the latest products and promotions we have to offer.
- Should you wish not to be contacted by us either by post, e-mail, or phone, please tick the box on the warranty form on the website. Alternatively, you can request not to be contacted in future by writing to Customer Service, at the address above.

UKCA Declaration of Conformity



We, Monitor Audio Ltd. (Manufacturer and Importer)
24 Brook Road Rayleigh Essex SS6 7XJ England

Declare in own responsibility, that the Monitor Audio products described in this manual is in compliance with the following Standards and is in conformity with the essential requirements of the Radio Equipment Regulations 2017.

- The following standards have been applied: (SAFETY)
- BS EN 62368-1:2014+A11:2017. information and communication technology Equipment (EMC)
- BS EN 55032:2015 Emissions Standard of Multimedia Equipment
- BS EN 55020:2007+A11:2011, BS EN 55035:2017.
- Electromagnetic immunity of broadcast receivers and associated equipment.
- BS EN 61000-3-2:2014. Limits for harmonic current emissions (equipment input current up to and including 16 Ampere per phase).
- BS EN 61000-3-3:2013. Limits of voltage fluctuations and flicker in low-voltage supply systems for equipment with rated current up to and including 16 Ampere per phase.
- (RoHS)
- BS EN 63000:2018 Technical documentation for the assessment of electrical and electronic products with respect to the restriction of hazardous substances

Signed by:

Name: T. Fall

Position: Quality Manager

Company: Monitor Audio Ltd

Monitor Audio Ltd.
24 Brook Road Rayleigh, Essex SS6 7XJ England
Tel: +44 (0)1268 740580
Email: info@monitoraudio.com
monitoraudio.com

©Monitor Audio Ltd. V2-2023 (Passive Speakers)

Read me, keep me or recycle me

FAQ

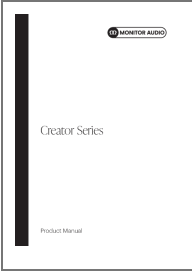
Q: Can I paint the grilles of my Creator Series speakers?

A: Yes, you can paint the grilles following the provided instructions. Ensure to remove the grille scrim before painting and use the same batch of paint for all grilles.

Q: How do I register my Creator Series speakers?

A: You can register your speakers using the QR code provided or by visiting monitoraudio.com/registration for product and customer support.

Documents / Resources

	<p>MONITOR AUDIO Creator Series In Ceiling Speaker [pdf] Installation Guide C2L, C1L, Creator Series In Ceiling Speaker, Creator Series, In Ceiling Speaker, Ceiling Speaker</p>
---	--

References

- [User Manual](#)

[Manuals+](#), [Privacy Policy](#)

This website is an independent publication and is neither affiliated with nor endorsed by any of the trademark owners. The "Bluetooth®" word mark and logos are registered trademarks owned by Bluetooth SIG, Inc. The "Wi-Fi®" word mark and logos are registered trademarks owned by the Wi-Fi Alliance. Any use of these marks on this website does not imply any affiliation with or endorsement.