



---

[Home](#) » [Monitaind](#) » **Monitaind CL2W Curtain Robot User Manual** 

## Contents [ [hide](#) ]

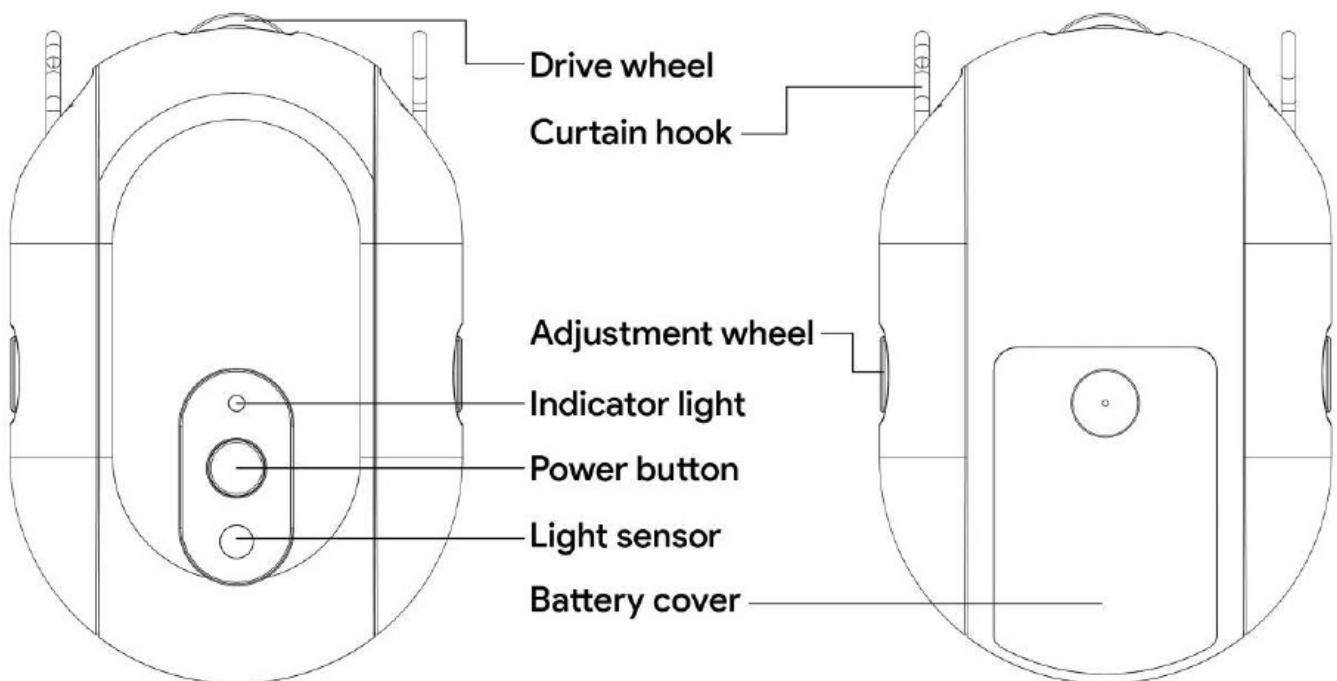
- [1 Monitaind CL2W Curtain Robot](#)
- [2 Product Overview](#)
- [3 Device Pairing](#)
- [4 Device Setup](#)
- [5 Device Control](#)
- [6 Use of Roman poles](#)
- [7 Specifications](#)
- [8 FAQs](#)
- [9 Documents / Resources](#)
  - [9.1 References](#)

# Monitaind

## Monitaind CL2W Curtain Robot



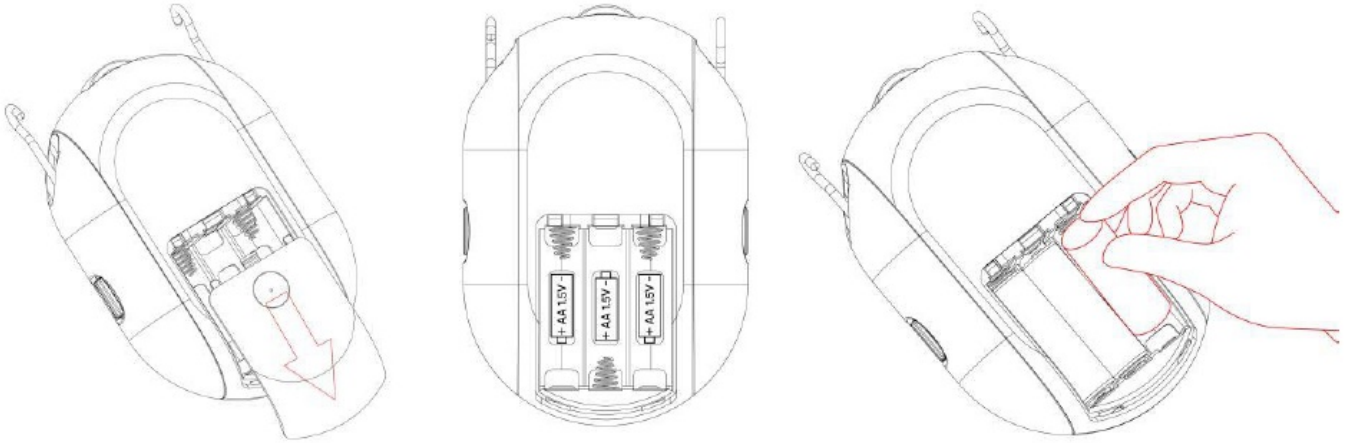
## Product Overview



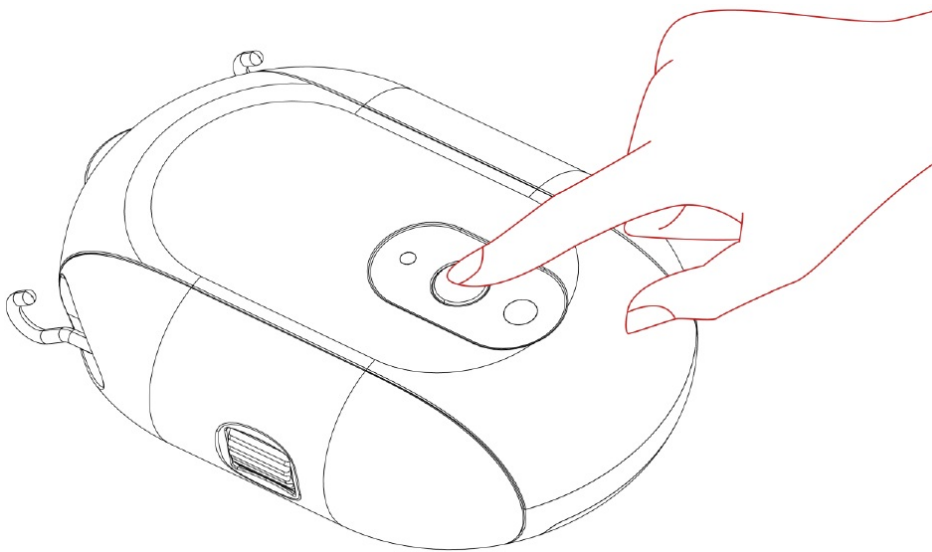
The Curtain Robot is an innovative smart home device that transforms your traditional curtains into smart curtains in minutes. It uses Zigbee 3.0 protocol. With a mobile app, you can effortlessly control the opening and closing of the curtains. It features a built-in timer to customize the timing of your curtains' movements, adding convenience to your smart living experience. Paired with a Zigbee gateway, this robot can seamlessly integrate into your home automation system for remote control and automated operations, enhancing the comfort and modernity of your home.

## Device Pairing

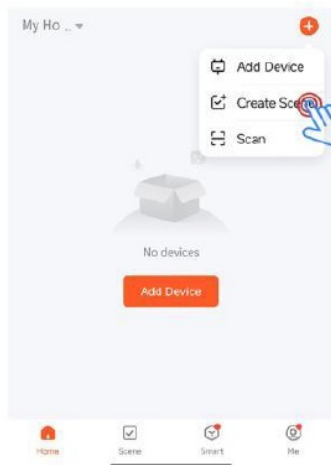
Smart Life App is the mobile platform for controlling IoT devices. You can search “Smart Life” in the mobile application store to install the App. Before use, please open the back cover of the product from the back, and install three AA batteries according to the directional markings on the battery slot to power the device.



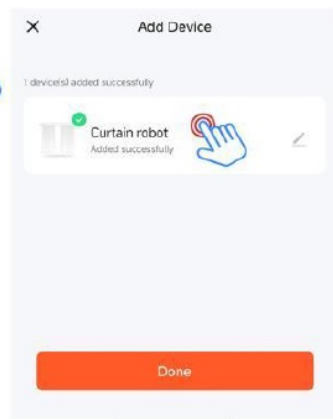
When pairing your Curtain Robot with your account, you need to reset the device. Please press and hold the reset button for 5 seconds until the blue light starts flashing, indicating that the device is now in pairing mode.



Tap the “+” icon at the top right corner in the app, then click the “Add Device” button. In the “Discover Devices” section, select “Curtain Robot” and click “Add”. Follow the on-screen instructions to complete the device pairing.



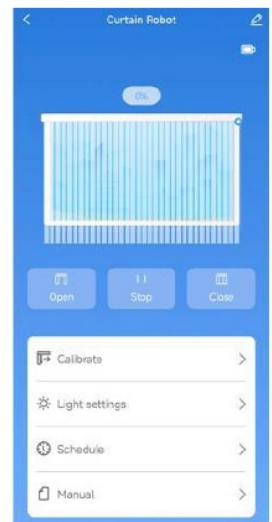
1 Click "Add devices"



2 Click "Curtain robot"



3 Click "Add"

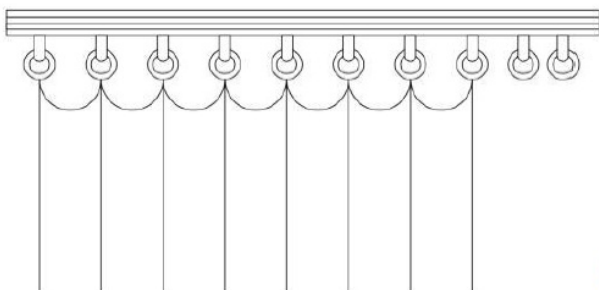


4 Add completed

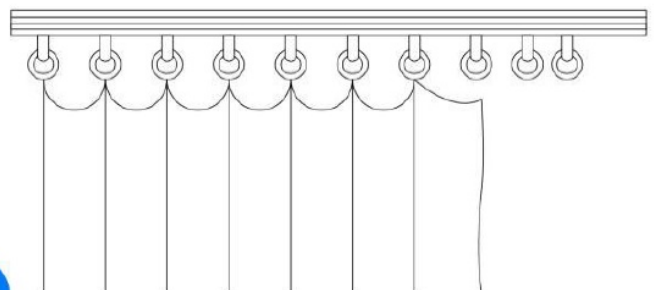
## Device Setup

### Preparation work:

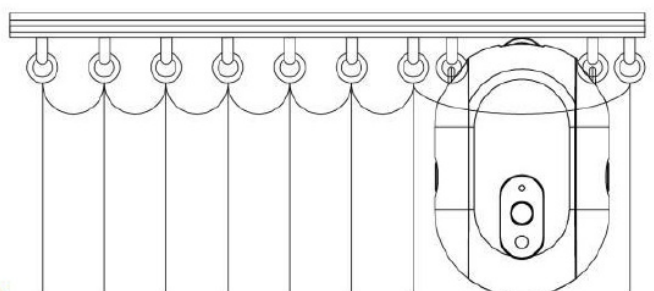
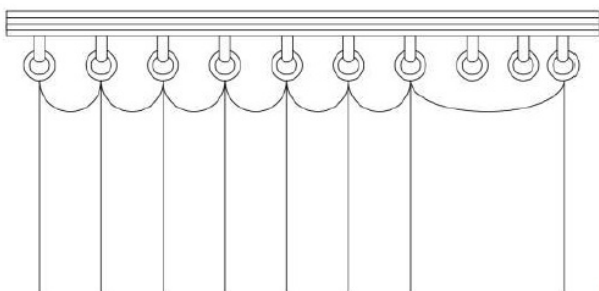
1. Before installing the equipment, wipe the track and dry it, then remove the curtain hook at the installation position.
2. Hang the removed hook on the front hook and reserve two hooks in the installation position to install the curtain robot.



1



2

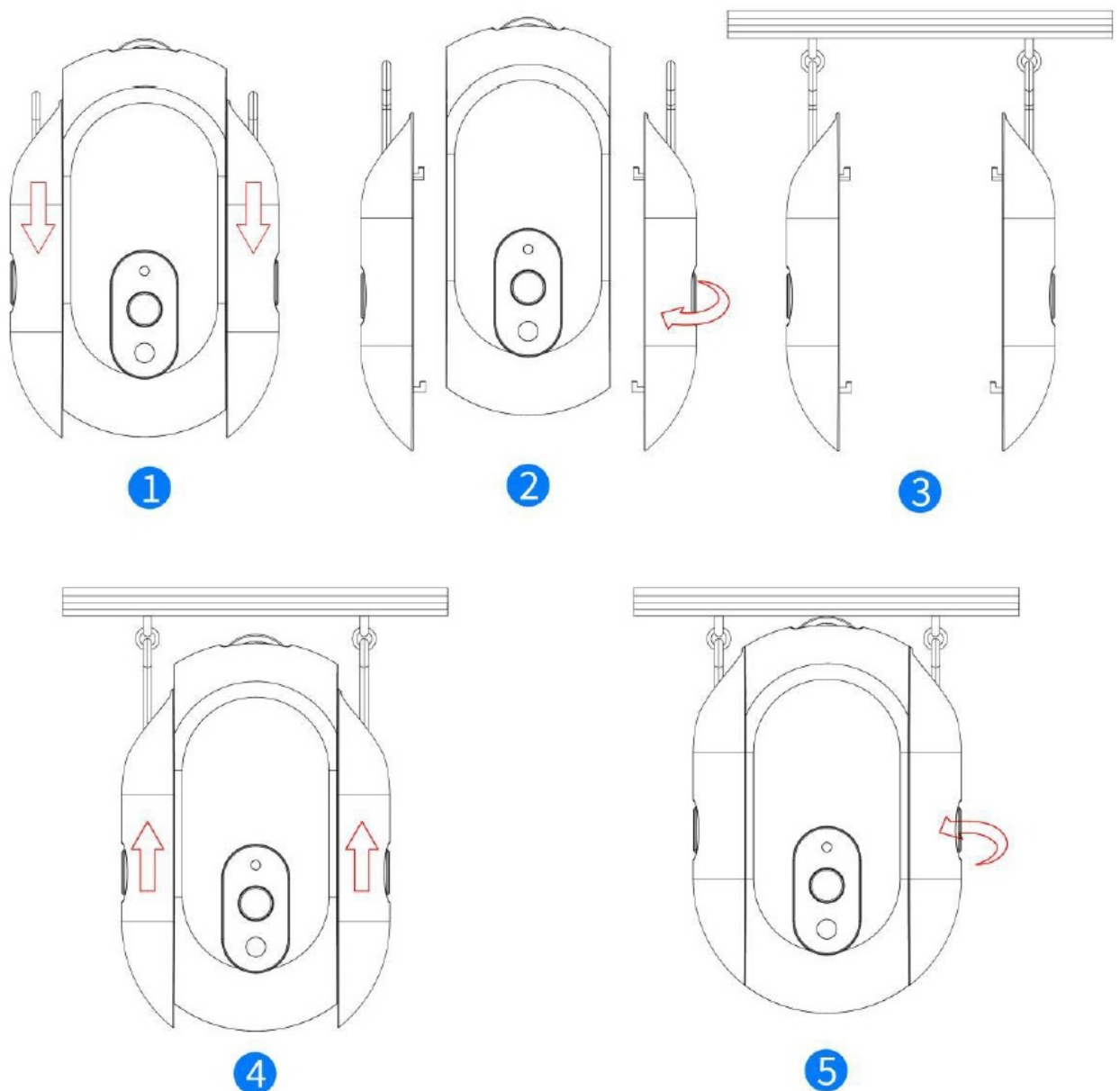


### To install your curtain robot:

1. Slide down from the main body of the robot to remove the hook accessories on both

sides.

2. Adjust the hooks to the topmost position using the knobs on the sides.
  3. Attach the hooks to the corresponding curtain rings on both sides.
  4. Reassemble the main body of the curtain robot with the hooks on both sides.
  5. Adjust the knobs on both sides to ensure the top wheels of the curtain robot fit snugly against the curtain track.
- **Tip:** During installation, you can tilt the curtain robot to the left and right to easily adjust the tightness of the side knobs. This product is suitable for curtain track I-shaped track and U-shaped track.

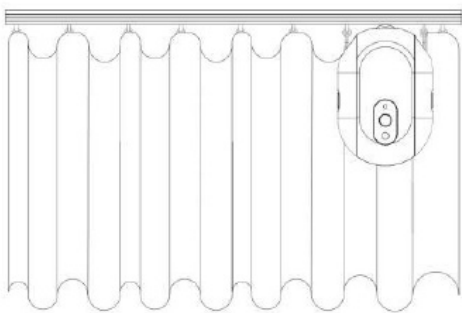


## Device Control

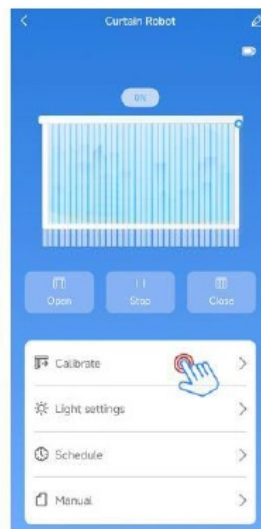
### Curtain Calibration

Before using the curtain robot, please calibrate it by following these steps

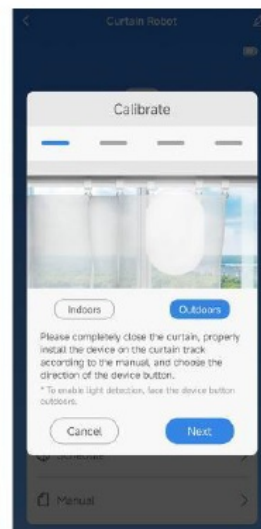
1. Pull the curtains to the fully closed position and correctly install the curtain robot.
2. After entering the device panel, click on “Calibrate”.
3. Select “Indoor” or “Outdoor” according to the orientation of the curtain robot button, and click Next.
4. Select the track direction where the curtain is located and click Next.
5. Select the curtain type and click Next.
6. Click the start button to start calibration.
7. When the curtains are fully open, immediately click the stop button to complete the calibration.
8. Calibration successful, click “Confirm” to jump to the control interface to complete calibration.



1



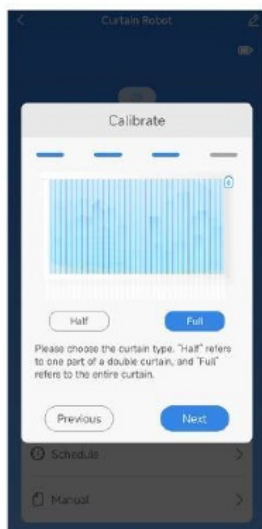
2



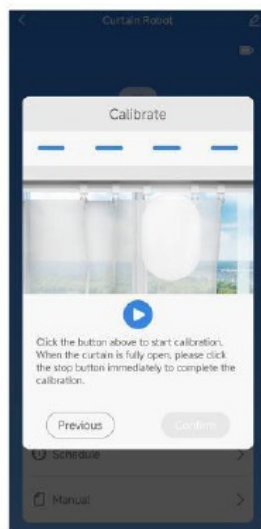
3



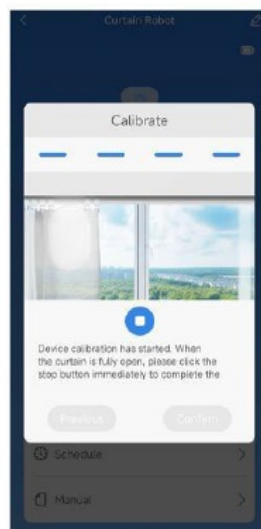
4



5



6



7

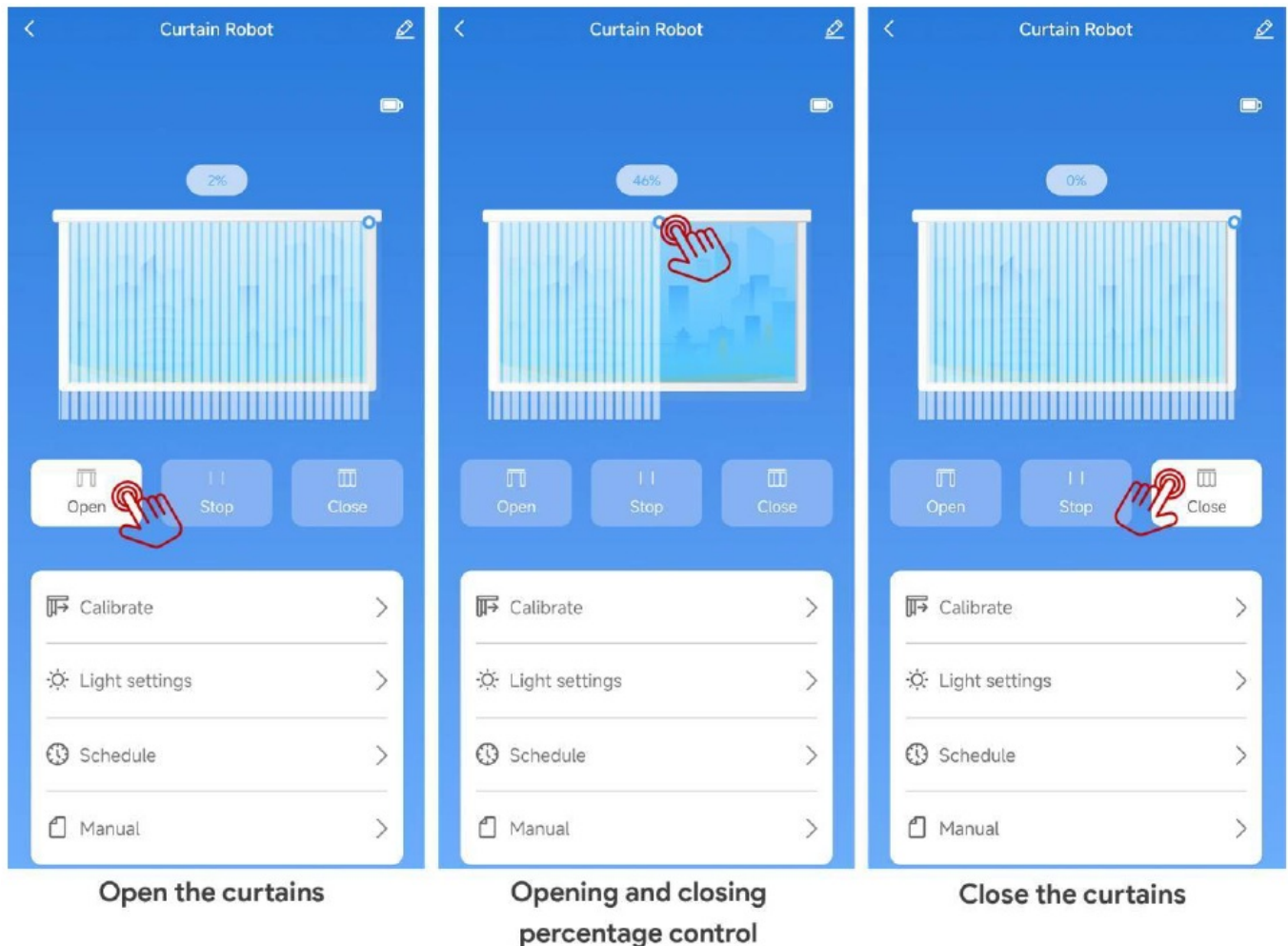


8

## Device Triggering



After entering the device panel, tap the “Open” icon to make the curtain robot move in the direction that opens the curtains, and the “Close” icon to make it move in the direction that closes them. The actions will occur within 3 seconds if the connection is strong. For precise control, you can adjust the curtains to any position using the two slideable buttons located above the curtain.



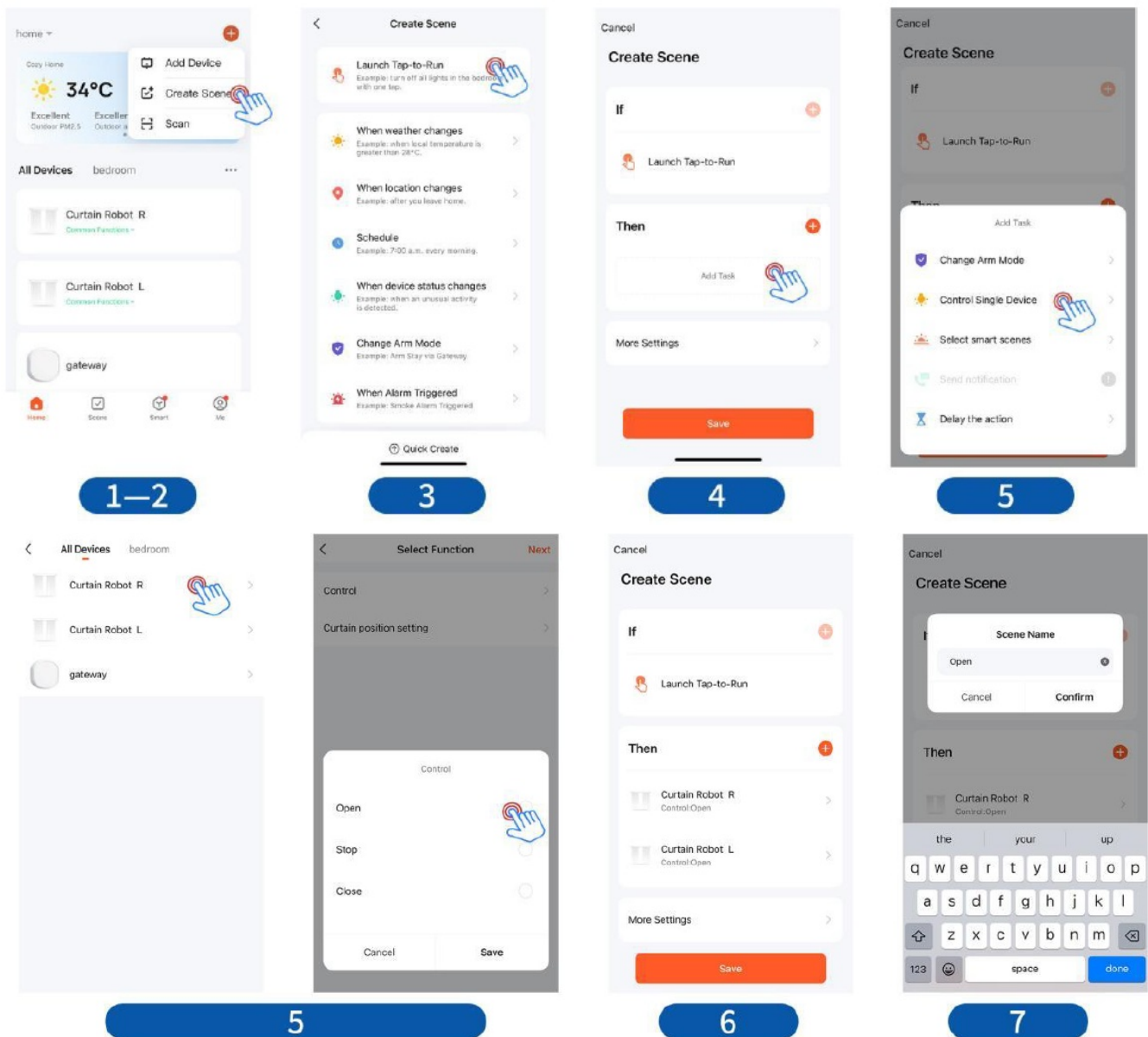
**Note:** For best performance, avoid manually pulling the curtains while the curtain robot is in operation.

### Double Curtains (2 curtain robots required)

After completing the calibration of the left and right curtains, you can control the opening or closing of both sides simultaneously by following these steps:

1. Click “+” in the upper right corner of the Tuya Smart APP.
2. Click “Create Scene.”
3. Click “Launch Tap-to-Run.”
4. Select “Add Task.”

5. In the task selection box, choose “Control Single Device” and select the curtain robot you want to control. Choose “Open/Close” under control.
6. Repeat step 5 to add the other curtain robot.
7. Create a name for the tap-to-run, such as “Curtains Open,” “Curtains Closed,” etc.



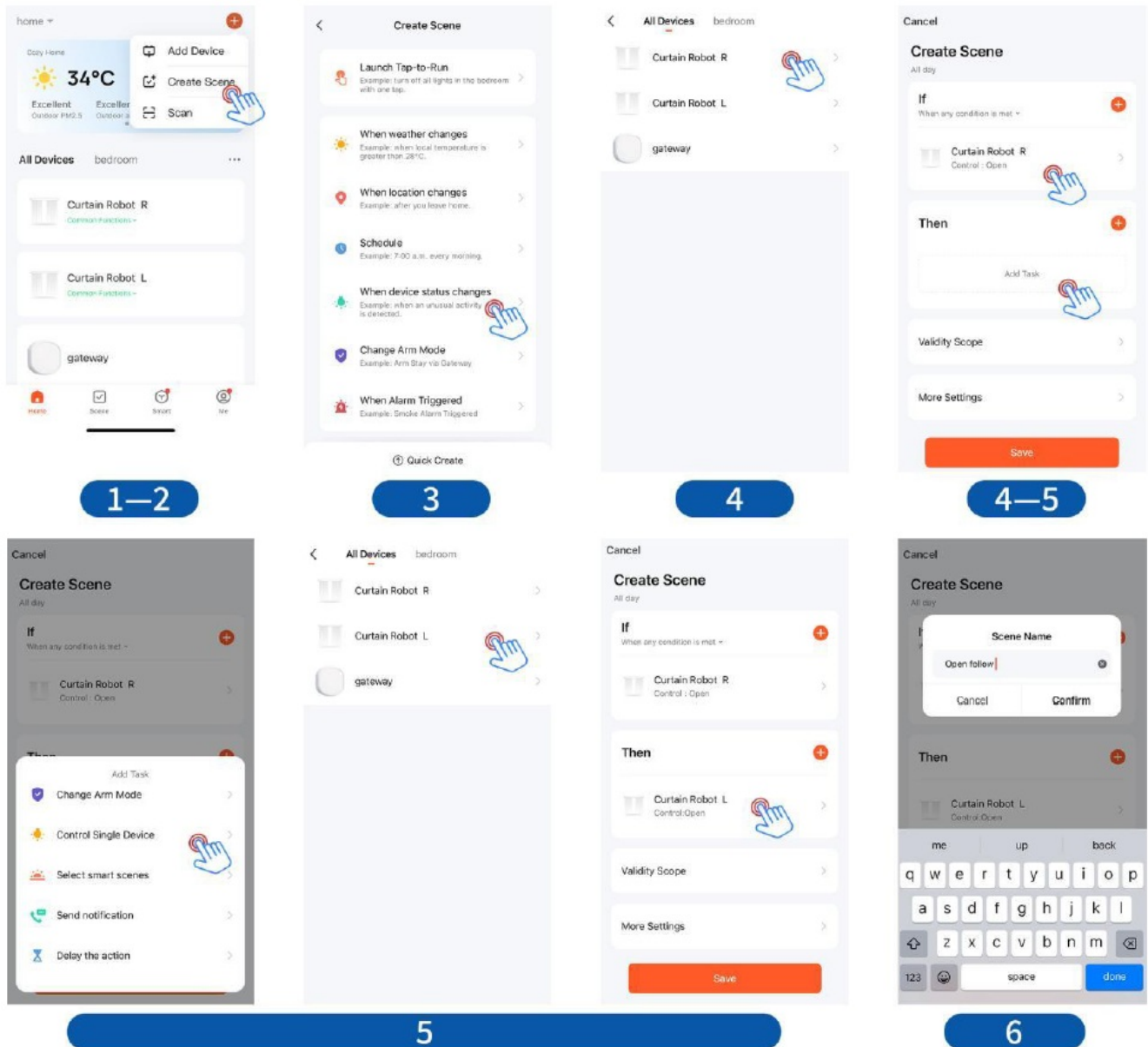
## Curtain Follow (2 curtain robots required)

After completing the calibration of the left and right curtains, you can make device 2 perform the same or opposite action as device 1 by following these steps:

1. Click “+” in the upper right corner of the Tuya Smart APP.
2. Click “Create Scene.”
3. Click “When device status changes.”
4. In the “If” section, Select “Curtain Robot R” and choose “Control: Open”
5. In the “Then” section, add “Curtain Robot L” and choose “Open/Close” under control.

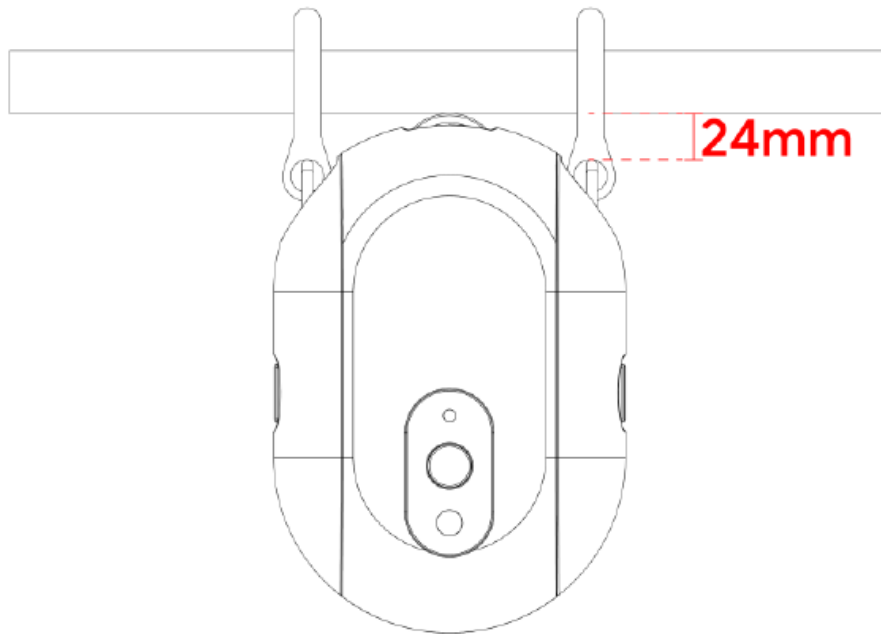


6. Create a name for the scene, such as “Open Follow,” “Close Follow,” etc.
7. Repeat steps 1-6 to add as many smart scenes as you want.



## Use of Roman poles

When the distance between the pull ring hook position of the Roman pole and the bottom end of the pole does not exceed 24 millimeters, this product can be directly applied without the need to purchase additional Roman pole accessories. Please refer to the attached example diagram for more details for intuitive understanding.



## Warning

This product is not waterproof. It contains batteries and therefore should not be used in damp or high-temperature environments. Do not obstruct the movement of the curtain robot while it is operating, as this may cause damage to the internal mechanical structure and the internal motor.

## Specifications

- **Dimensions:** 95 x 43 x 140 mm
- **Weight:** 246 grams
- **Wireless protocol:** Zigbee 3.0
- **Battery type:** AA 1.5V
- **Working temperature:** 0°C 45°C/ 32°F 113°F
- **Working humidity:** 0 to 95% RH, non-condensing
- **Package content:** 1 Curtain Robot

## FAQs

- **Q: How do I reset the device?**
  - A: Press and hold the reset button for 5 seconds until the blue light flashes to reset the device.
- **Q: Can I use this product with any type of curtain track?**
  - A: This product is suitable for use with I-shaped track and U-shaped track

curtains.

# Documents / Resources

	<a href="#">Monitaind CL2W Curtain Robot [pdf]</a> User Manual CL2W Curtain Robot, CL2W, Curtain Robot, Robot
---	--

## References

- [User Manual](#)

CL2W, CL2W Curtain Robot, Curtain Robot, Monitaind, Monitaind Robot

## Leave a comment

Your email address will not be published. Required fields are marked \*

Comment \*

Name

Email

Website

☐ Save my name, email, and website in this browser for the next time I comment.

**Post Comment**

**Search:**

e.g. whirlpool wrf535swhz

**Search**

[Manuals+](#) | [Upload](#) | [Deep Search](#) | [Privacy Policy](#) | [@manuals.plus](#) | [YouTube](#)

This website is an independent publication and is neither affiliated with nor endorsed by any of the trademark owners. The "Bluetooth®" word mark and logos are registered trademarks owned by Bluetooth SIG, Inc. The "Wi-Fi®" word mark and logos are registered trademarks owned by the Wi-Fi Alliance. Any use of these marks on this website does not imply any affiliation with or endorsement.